



# THE NATIONAL PIPE ARCHIVE

Registered Charity Number 1043065

**Accession Number:** LIVNP 1998.09.01 (part 3)

**Description:** Part 3 of Vol. 1 of Colin Tatman's unpublished notes and drawings of pipes and hair curlers (Vol. 4) recovered from sites in London and Kent, pages 180 to 235 (end).

**Comments:** For each figure there is a caption which includes the date and site of recovery; the date of the pipe (or hair curler – Vol. 4) followed by a description. The figures are grouped by find spot and then illustrated in chronological order. This is the third, and final, part of Volume 1 which covers four groups of pipes recovered from Blackfriars to Dowgate (N. Bank), R. Thames; the first c1720-1780; the second c1770-1820; the third c1800-1860 and finally the fourth, c1840-1900+.

**Key Words:** Clay pipe; London; Blackfriars; Dowgate; River Thames; Thames foreshore; Paul's Wharf; Vintry Wharf; Southwark; Queenhithe; Trig Lane Stairs.

**Scanned:** PDF 7 December 2016

Any images in this PDF must not be lent, copied to another party, sold or reproduced in any way without prior permission from the National Pipe Archive and the copyright owner, if applicable. Reproduction or publication in any medium is expressly forbidden without written authorisation and should include an acknowledgement worded 'Courtesy of the National Pipe Archive' and quoting the relevant accession number.

BLACKFRIARS to DOWGATE  
(NORTH BANK)  
R. THAMES. 1/1  
C. 1720-1780.  
V. II

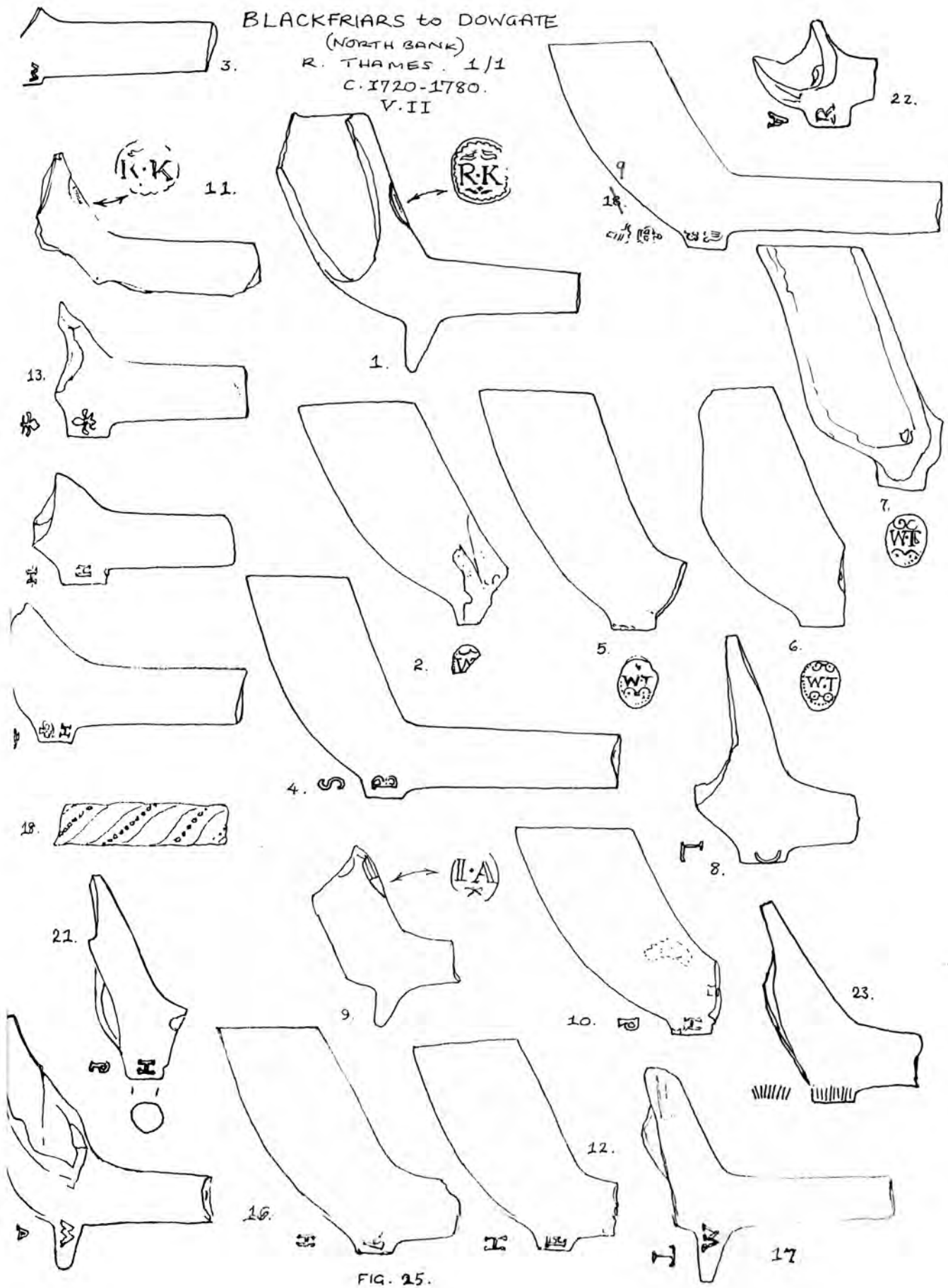


FIG. 25.

BLACKFRIARS to DOWGATE  
(NORTH BANK)  
R. THAMES. 1/1.  
C. 1720-1780.  
V. II

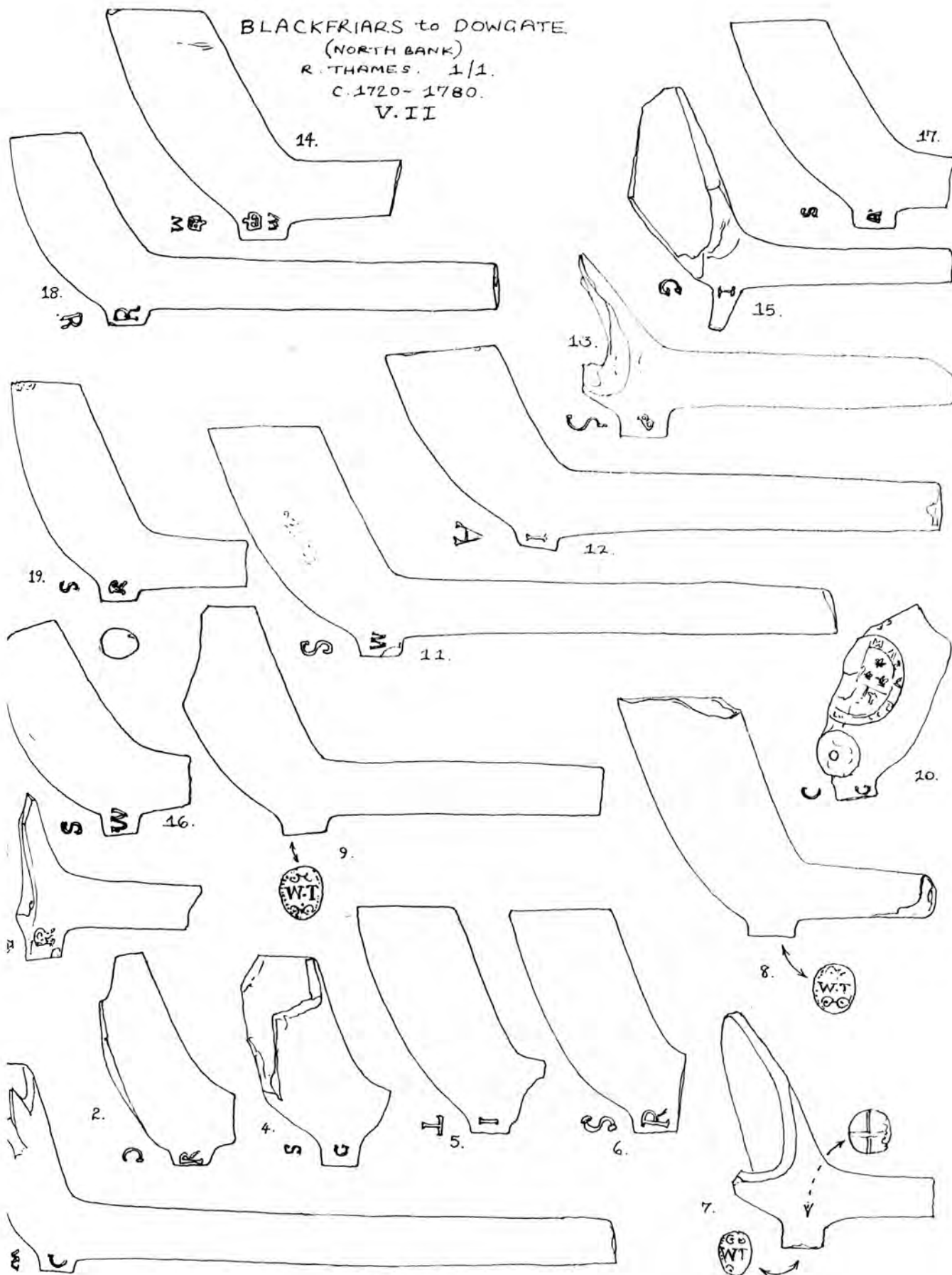


FIG. 26.

BLACKFRIARS to DOWGATE  
(NORTH BANK)  
R. THAMES. 1/1.  
C. 1720-1780.  
V. II

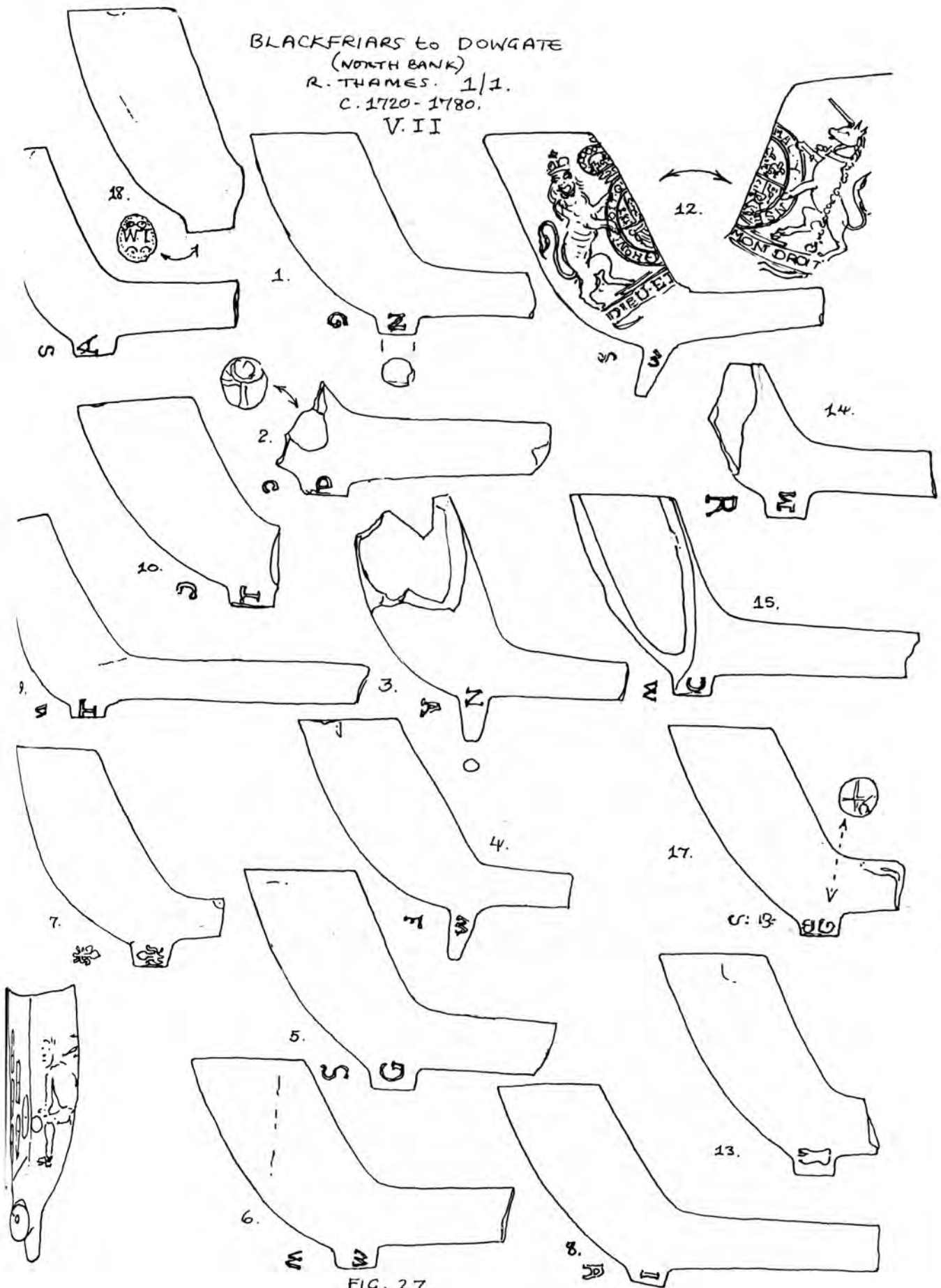


FIG. 27.

BLACKFRIARS TO DOWGATE  
(N. BANK)

R. THAMES . 1/1.

C. 1720 - 1780.

V. II.

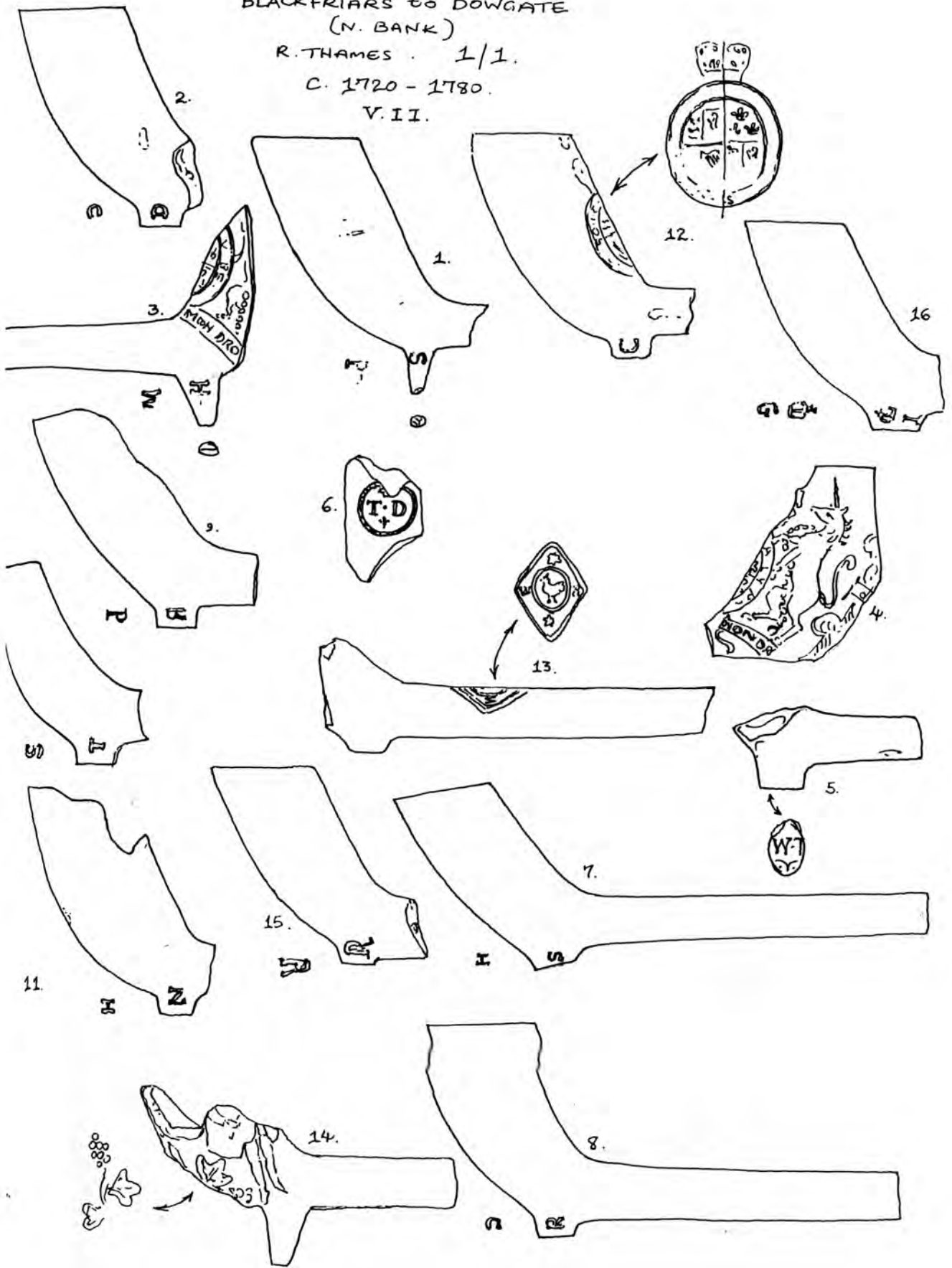


FIG. 28.

BLACKFRIARS to DOWGATE  
(N. BANK)

R. THAMES . 1/1

C. 1720-1780 .

V. II.

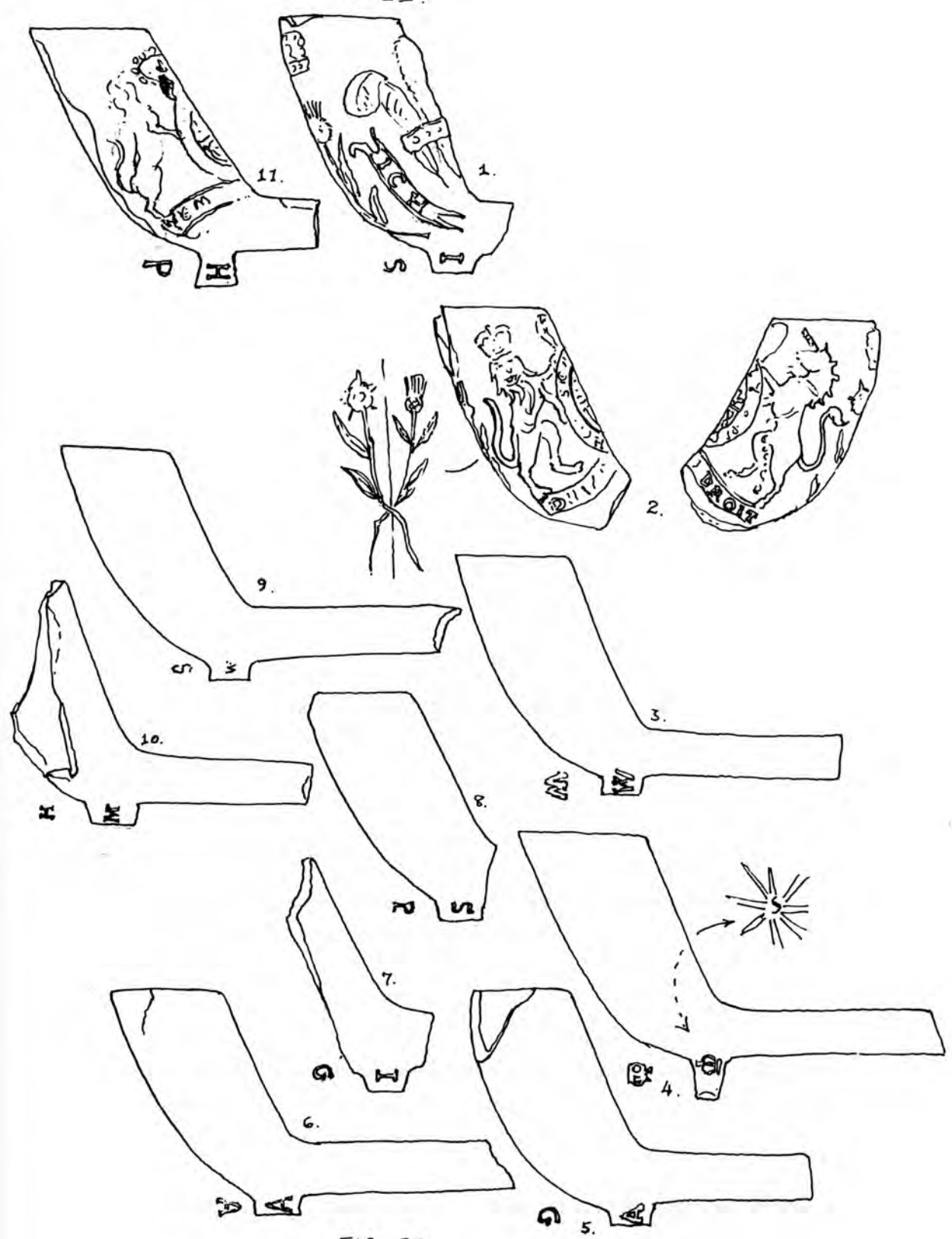


FIG. 29.

FIG. 25.

1. (28.10.85) PAUL'S WHARF AREA.  
C. 1750-80. L. TYPE 26. S.B.D. 2 MM. SMOOTH, POLISHED BOWL; ROUND STEM-BREAK; SMOKED LIP; R K INCUSE WITH DENTATED CIRCLE SURROUND; PELLET BETWEEN LETTERS; FOLIATED BRACKETS ABOVE AND BELOW LETTERS. MAKER UNKNOWN. SIMILAR BATTERSEA; SEE ALSO ATKINSON MAKERS' MKS. ON CIP'S FOUND IN LONDON NO.'S 39 & 53, SEEM TO DATE FOR ROBERT KNIGHT. (SEE BAR 1975).
2. (28.10.85) PAUL'S WHARF AREA.  
C. 1750-70. L. TYPE 25. S.B.D. 2.5 X 1.5 MM. MEDIUM TO THIN, SMOKED BOWL. MARK OF WILLIAM TAPPIN ON BASE. 1763. BLACKFRIARS. E100. SU. ASS. SEEMS TO BE A LATE TAPPIN BOWL. MANY OF THE OTHER FOUND LOOK MORE LIKE BOWLS FROM THE 1720'S. THIS STAMP BEARLY FITS ON THE BASE.
3. (28.10.85)  
C. 1730-60. L. TYPE 25. S.B.D. 2.1 MM. SQUARE, SMOOTH BASE, TENDING TO SLOPE DOWN; W/H MOULDED ON SIDES. WILLIAM HUGGINS, 1739-42. GREEN DRAGON ALLEY. BAPT. S R D'S. P. REGS. ST. ANNES LIMEHOUSE; OR WILLIAM HEATH, 1738-45+ BRETTFORD. APP. ROLLS. (OB. 1764-SEE BAR 97).
4. (13.11.85) VINTRY WHARF.  
C. 1720-40. L. TYPE 25. S.B.D. 2.2 MM. MEDIUM TO VERY THICK BOWL; THICK STEM; SHALLOW, SQUARE BASE; IRON STAINING BACK; VENT IN TOP OF STEM; B/S MAKER. PERHAPS BENJAMIN STEPHENSON. 1713 F.
5. (27.11.85)  
C. 1750-70. L. TYPE 25. S.B.D. 2 MM. TALL, THICK TAPPIN BOWL WITH POLISHED SURFACE; SLIGHTLY FLARED APPEARANCE TO FRONT ASPECT; DIE BADLY PLACED ON BASE.
6. (27.11.85)  
C. 1750-70. L. TYPE 25. S.B.D. 2.8 MM. THICK, HEAVY TAPPIN BOWL; SMOKED INNER LIP; SOME IRON TINGES; BASE STAMP '7/8 THS' PLACED.
7. (27.11.85) C. 1750-70. S.B.D. 2 MM; POLISHED, GREY-WHITE TAPPIN BOWL; SMOKED; W/T SEEM MORE ELONGATE THAN ABOVE.



FIG. 25.

8. (27.11.85) SOUTHWARK BRIDGE/DOWGATE.

C. 1720-30. L-TYPE 26. S.B.D. 2.5 MM. SMOKED, GRAYISH BOWL; SURFACE HAVING A SOAPY POLISHED FEEL; OVAL BASE, OBLIQUE IN FRONT ELEVATION; C/L ON SIDES OF BASE. PERHAPS CHRISTOPHER LAVENDER 1696 SIGNED OATH OF ALLEGIANCE AS A JOURNEYMAN OR ELSE CHRISTOPHER LONG 1710 F. THE SIGNIFICANCE OF THE LETTER 'F' IN BAR 1975 (14) IS UNCERTAIN AS IN A LETTER OSWALD REFERED TO A MAKER AS AN APPRENTICE WITH THIS LETTER BESIDE HIS NAME. (B. STEPHENSON) 'F' FOR FREE? HOWEVER IN THE ABBREVIATIONS LIST (BAR 14) F. IS ASSIGNED AS 'FATHER.'

9. (27.1.1986). QUEENHITHE.

C. 1760-80? L-TYPE 26. S.B.D. 2.15 MM. INCUSE BACKSTAMP I A. OVAL SURROUND. OSWALD (IN H.T.T. 14.3.86) REMARKS 'I ENCLOSE THE ONLY TRACING OF A RELIEF MARK WHICH MIGHT POSSIBLY BE APPLICABLE'. HOWEVER THIS DRAWING OF THE PIPE LOOKS TOO EARLY (MORE LIKE C. 1700). SO MAKER UNCERTAIN, BUT cf. JOHN ADDS, MAIDSTONE POLLS 1761. SEE INDEX CARDS.; OR JOHN ANDREWS 1780, BRISTOL FREEDOM ROLLS, (OS. 1960), 1784, POLLS. E. SMITHFIELD (OS. 1975).

10. (27.1.1986). QUEENHITHE.

C. 1720-40. L-TYPE 27. S.B.D. 2.2 MM. VERY THICK, WIDE BOWL; ROUND BASE; SMOOTH, SHINY SURFACE; H/P MAKER. PERHAPS HUMPHRY PARBUT (PARBATT): 25 OCT. 1730, HUMPHRY PARBUT, BAPTISED, SON OF HUMPHRY PARBUT/ELIZ., PIPESMAKER. ST. GEORGE IN THE EAST, STEPNEY (X/24/123); BAPTISED RICHARD ON 26 JULY 1738 (PIPEMAKERS), 7 STAR ALLEY, ST. GEORGE IN EAST (X/24/123). OSWALD'S ENTRY FOR 1729 (HUMPHREY PARBATT) COULD NOT BE FOUND AND MAY BE AN ERROR ON BEHALF OF J.F.C. ANOTHER HUMPHREY PARBUTT (WIFE MARY) IS RECORDED LIVING IN GOODMAN'S YD. (NO REF. TO TRADE) ST. MARY WHITECHAPEL IN 1735 (23 APR.) BAPTISED HUMPHREY PARBUTT A SON, PERHAPS A RELATION. AN INFANT, HUMPHRY PARBUT (OLD GRAVEL LANE) IS REGISTERED BURIED ON 4 NOV. 1730 (ST. 460. IN E) POSSIBLY HUMPHRY PARBUT/ELIZ.'S SON BAPTS. 25 OCT OF THAT YEAR (SEE ABOVE). NO FURTHER TRACE OF H.P. HAS BEEN FOUND TO DATE (20.5.86). C.A.T.

11. (3.6.1986). QUEENHITHE.

C. 1740? S.B.D. 2.55 MM. THICK, ROUND STEM; SMOKED CAVITY; IRON TINGES; R.K. INCUSE ON BACK. cf. NO. 1. STAMP IDENTICAL BUT BAD IMPRESSION, PIPE LOOKS A LITTLE EARLIER THAN NO. 1.

12. (3.6.1986)

C. 1720-45. L-TYPE 25. S.B.D. 2 MM. THICK BOWL; NARROW, OVAL BASE; H/F MAKER. UNKNOWN.



## FIG. 25.

13. (3.6.1986).

c. 1740-60, L. TYPE 25. S.B.D. 2.5 MM. ROUND STEM-BREAK; OVAL BASE - SCRATCHED; FLEUR-DE-LYS ON SIDES. SEE BAR 97 FOR EXAMPLE FROM HEATH'S KILN - TEMP. - APPROACHING MID-CENTURY; cf ALSO BAR 146 ii, p. 368. HERE I DISCUSS POSSIBLE ASSOCIATION BETWEEN TOBACCO PLANTS & F-D-L'S

14. (13.6.1986)

c. 1720? L. TYPE 25. 2.4 MM. ROUND STEM-BREAK - CENTRAL GORE; OVAL BASE, THICKISH STEM. DIFFICULT TO SAY FOR CERTAIN BUT PERHAPS A PIPE FROM THE FIRST QUARTER OF THE CENTURY. H/H MAKER SO PERHAPS HENRY HANNAH, 1694-6, APP. T. P. CO. O. A. (J). SO COULD HAVE BEEN MAKING PIPES IN THIS PERIOD.

15. (13.6.1986). QUEENHITHE.

c. 1720-50 L. TYPE 25. <sup>S.B.D.</sup> 2.5/2.4 MM. ROUND STEM-BREAK - CENTRAL GORE; ROUND BASE; H/P WITH CROWNS. SEE NO. 10.

16. (13.6.1986).

c. 1720-50. L. TYPE 25. S.B.D. 2.05 MM. SMOKE-CAVITY; SMOOTH SURFACE; THICK STEM; SMOOTH, ROUNDISH SPUR; A/H MAKER. LIKELY ABLE HORTON, 1717. SOUTHWARK. APP. R. HIS APP. J. THORPE. OR ANTHONY HAYNES, FREE IN 1722. SIMILAR WITH R/B BACKSTAMPS KNOWN.

17. (13.6.1986). QUEENHITHE DOCK.

c. 1770? L. TYPE 26 S.B.D. 2 MM. ROUND STEM-BREAK - CENTRAL GORE; SHINY, DISCOLOURED SURFACE; PERHAPS TRACE OF INTERNAL CAVITY CROSS; W/T MAKER. POSSIBLY WILLIAM TAPPIN, 1763. BLACKFRIARS. £100. SU. ASS.

18. (24.2.1985) QUEENHITHE.

18<sup>th</sup> c? S.B.D. 2.2 MM. 'DRILL' SPIRAL WITH ROULETTED BANDS. NO SIGN OF BREAK OR STEM SEAM. PERHAPS CARRIED OUT WHEN CLAY IN 'GREEN' STATE WITH INDENTED TOOL BY TWISTING PIPE AROUND. VERY FAINT SEAM 'WAVE' APPARENT. PERHAPS FROM CHESTER c. 1700-60. cf. BAR 78, p. 190-1.

19. (4.8.1986).

c. 1720-50. L. TYPE 25. S.B.D. 2.3 MM. BROWN BLOTCH BACK R.H.S. OF BOWL. THICK, SMOKE-CAVITY. HARP & CROWNS ON SPUR.

## FIG. 25.

20. (11. 7. 1987)

C. 1750-80 L. TYPE 26. S.B.D. 1.5 MM. ASSEMBLED WITH P.V.A. W/A MAKER. UNCERTAIN. TOO LATE FOR WILLIAM ALLEN (2) ob. 1736 (OS'75).

21. (11. 7. 1987)

C. 1740 L. TYPE 25. S.B.D. 2 MM. H/P MAKER. HUMPHRY PARBUT, BAPTISED RICHARD IN 1738 (ST. GEO. IN THE EAST), WORKING IN 7, STAR ALLEY (C.A.T.); BAPTISED HUMPHRY 1730 (C.A.T.); ob. 1742 (C.A.T) OLD GRAVEL LANE.

22. (11. 7. 1987)

C. 1760+ L. TYPE 25. S.B.D. 2 MM. BLACK CAVITY; OVAL BASE; R/A MAKER. UNCERTAIN.

23. (8. 3. 1989)

C. 1740-70. L. TYPE 25. 2 MM. (S.B.D.) STATED BASE. SIMILAR TO EARLY 18<sup>th</sup> C PIPES FROM CHESTER, THOUGH THIS IS A LONDON FORM.

FIG. 26.

1. (3.11.1986) QUEENHITHE.  
C. 1720-60. L. TYPE 25. S.B.D. 2.2 MM. SMOKED CAVITY; THICK STEM; C? W MAKER. A NUMBER OF POSSIBLES INCLUDING CORNELIUS WYMARK 1733, HORSLEY DOWN, DAUGHTER BAPT. P. REGS. ST. JOHN, AN APP. TO A. PAGE, 1723, CAMBRIDGE £3. (OS. 1975 (CAMB.); OS. IN LIT. 1986). CF. VOL. I FIG. I NO. 11.
  
2. (3.11.1986)  
C. 1720-60. L. TYPE 25. S.B.D. 2.2 MM. STATIONS LOWER HALF OF CAVITY - SMOKED; THICK BOWL; SMOOTH SURFACE (CLEAN); R/C MAKER. PERHAPS RICHARD COLE (2) 1742-1800. 1742 APP. TO T. FOSTER £5. 1763, WHITECROSS ST. D. 1800 GOLOGN LA. D.
  
3. (3.11.1986)  
C. 1740-80. L. TYPE 25. S.B.D. 2 MM. CIRCULAR STEM-BREAK - CENTRAL BORE; ROUND, SLOPING BASE; MEDIUM STEM; R/A MAKER. POSSIBLY ROBERT ALLEN, 1774, ST. GEORGE IN THE E. DAUGHTER BAPT. (OS. IN LIT.)
  
4. (3.11.1986)  
C. 1720-60. L. TYPE 25. S.B.D. 2 MM. SQUAT, IRON-STAINED BOWL; THICK; CYLINDRICAL SPUR; G/S MAKER. A NUMBER OF POSSIBLES INCLUDING GEORGE STRAY (STAW, STACE) 1, 1699-1725 F. APP. ROLLS. HIS APP. S. APPEBY. 1717 £20; S. FARR, 1725 £4.; GEORGE STRAY? (2) 1763 EXECUTION DOCK, D.
  
5. (16.10.1986)  
C. 1720. L. TYPE 25. S.B.D. 2.5 MM. THICK, SMOKED, UPRIGHT BOWL, POSSIBLY TEMP. QUEEN ANNE; OVAL, SMOOTH BASE. I/T MAKER. A NUMBER OF POSSIBLES INCLUDING JOSEPH TING, 1726 (OB). ST. JAMES, CLERKENWELL. ARCH. DEAC. LOND. WILLS.
  
6. (16.10.1986)  
C. 1720+ L. TYPE 25. S.B.D. 2 MM. THICK, SMOKED, GREYED BOWL; CYLINDRICAL SPUR; LARGE R/S LETTERS; A NUMBER OF MAKERS POSSIBLE, CONSIDER RICHARD STEELE 1704-45 FREE, SOUTHWARK, A TYPICAL DATE RANGE FOR PIPES OF THIS TYPE, CF. VOL I FIG. 2 NO. 6.; NO. 9.; FIG. 7. NO. 13.; FIG. 13 NO 12 ALSO VOL. I.
  
7. (13.10.1986)  
C. 1750-70. L. TYPE 25. S.B.D. 2.5 MM. A W. TAPPIN BOWL. DAPPLED IRON STAINS. THIN STEM.

FIG. 26.

8. (10.10.1986) TRIG LANE STAIRS.

C. 1750-70. L-TYPE 25. S.B.D. 2 MM. TALL, THICK TAPPIN BOWL. ALGAE IN CAVITY. A JOANNA TAPPIN WAS WORKING IN 1772 (SU. ASS. POLICY) WHO WAS PROBABLY THE WIDOW OF WILLIAM (OS. IN LITT) SO IF THIS IS THE CASE WT BOWLS MAY DATE UP TO C. 1770, THOUGH HIS WIDOW COULD HAVE CONTINUED TO STAMP BOWLS WITH HIS STAMP. MOST OF THESE WT STAMPED BOWLS ARE TYPICAL OF THOSE MADE IN THE 1720'S, PERHAPS TAPPIN WAS USING AN OLD MOULD OR SERIES OF OLD MOULD. OR PERHAPS HE WAS CATERING FOR SMOKERS WHO PREFERRED THE OLDER STYLE PIPE. THE PIPE SHOWN IN FIG. 7 IS MORE TYPICAL OF THE 1750-70 PERIOD, WITH THE THINNER STEM & NARROWER SPUR -- TAPPIN'S STAMP COULD ONLY JUST FIT ONTO THIS!

9. (4.8.1986) PAUL'S WHARF AREA.

C. 1750-70. L-TYPE 25. S.B.D. 2.15 MM. THICK TAPPIN BOWL. SMOOTH SURFACE, SOME IRON STAINING; ROUND STEM-BREAK, CENTRAL BORE; SEE NO. 8. ABOVE.

10. (16.10.1986)

C. 1750-80. L-TYPE 25. S.B.D. 2 MM. HANOVARIAN ARMS. NO MOTTO BELOW. C/G? MAKER. UNCERTAIN. NO SUPPORTERS.

11. (7.12.1986)

C. 1735-40. L-TYPE 25. S.B.D. 2 MM. THICK, SMOKED BOWL; THICK, ROUND STEM; OVAL SPUR; W/S MAKER. MANY POSSIBLES.

12. (4.12.1986)

C. 1770. L-TYPE 25. S.B.D. 2 MM. SIMILAR STRUCTURE TO ABOVE BUT SQUATER. LIKELY SAME PERIOD. I/A MAKER. cf. FIG. 3, NO. 8 VOL. I. A NUMBER OF POSSIBLE MAKERS.

13. (7.12.1986)

C. 1730 L-TYPE 25, S.B.D. 2.1 MM. DISCOLOURED FRAGMENT; OVAL SPUR; CRUDE O/S OW SIDE; BOWL SEEMS TO BE FAIRLY FORWARD SLOPING. SEE FIG. 25 ABOVE, NO. 4.

FIG. 26.

14. (7.12.86)

C. 1720-50. L. TYPE 25. S.B.D. 2.9 MM. TALL, SMOKED, POLISHED BOWL, THOUGH SCRATCHED; ROUND STEM-BREAK, CENTRAL BORE; STAINED BASE/L.H.S; MAKER PROB. WILLIAM MANBY. FREE 1719 (OS.) CHILDREN BAPTISED C. 1723-(C.A.T)-1746 (OS). ADDRESS GREEN DRAGON ALLEY. AT LEAST ONE OTHER WILLIAM MANBY WAS WORKING IN THE PREVIOUS CENTURY. THERE SEEMS TO BE SOME CONFUSION IN OSWALD'S LISTS (1969, 1975, 1978) RE. W. MANBY (1) & (2).

15. (3.11.1986)

C. 1760+ L. TYPE 26. S.B.D. 1.9 MM. ROUND STEM BREAK; SMOKED CAVITY; IRON STAINS R.H.S.; I/Q MAKER. A NUMBER OF POSSIBLES.

16. (2.1.1987). QUEENHITHE.

C. 1720-60. L. TYPE 25. S.B.D. 1.95 MM. SMOKED, THICK-MEDIUM BOWL, COPIOUS; POLISHED SURFACE; ROUND BASE; W/S MAKER. CF. NO. 11.

17. (2.1.1987). QUEENHITHE.

C. 1720-40. L. TYPE 25. S.B.D. 2.1 MM. DIRTY, MEDIUM, TALL BOWL, RATHER NARROW; SMOOTH SURFACE; OVAL BASE; SMALL A/S LETTERS ON SIDES. SEE VOL. I FIG. 14. NO. 12.

18. (6.1.1987). QUEENHITHE.

C. 1720-50. L. TYPE 25. S.B.D. 2 MM. THICK-MEDIUM LIP; ROUND STEM-BREAK, CENTRAL BORE; ROUND BASE; IRON STAINS, FRONT, L.H.S; R/R MAKER. A NUMBER OF POSSIBLES.

19. (31.1.1987)

C. 1730-60. L. TYPE 25. S.B.D. 2 MM. SMOKED CAVITY LIP; SMOOTH, BUFF CLAY; R/S MAKER. SEE NO. 6 ABOVE.

FIG. 27.

## 1. (MAY, 1987)

C. 1730-60. L. TYPE 25. <sup>(S.B.D.)</sup> 2 MM. MEDIUM-THICK BOWL; ROUND STEM-BREAK; CLEAN WHITE CLAY; HIPPED LIP R.H.S; N/G MAKER. UNRECORDED TO DATE.

## 2. (MAY, 1987)

C. 1730-60. L. TYPE 25. <sup>(S.B.D.)</sup> 2 MM. D/C MAKER: PERHAPS DANIEL CRABB 1723. APP. ROLLS. CLERKENWELL. HIS APP. W. SHARPE E20. (OS. 1975).

## 3. (MAY, 1987)

C. 1750-80 L. TYPE 26. S.B.D. 2 MM. GREYISH SURFACE; ROUND STEM-BREAK, CENTRAL BORE; N/A MAKER. UNRECORDED.

## 4. (MAY, 1987)

C. 1750-80 L. TYPE 26. S.B.D. 2 MM. SLENDER, THIN-MEDIUM BOWL; ROUND STEM-BREAK, CENTRAL BORE; IRON STAIN R.H.S. W/F MAKER; WILLIAM FOORD 1754 POLL - SEE 'BRISTOL CLAY PIPE MAKERS, A REVISED & ENLARGED EDITION', PRICE/JACKSON.

## 5. (MAY, 1987)

C. 1720-40. L. TYPE 25. S.B.D. 2. 1 MM; ROUND STEM-BREAK; THICK BOWL; OVAL BASE; G/S MAKER. GEORGE STRAY 1699-1725 (1) & (2) 1763 TWO POSSIBLES (OS. 1975).

## 6. (MAY, 1987)

C. 1720-40. L. TYPE 25. S.B.D. 2 MM. CENTRAL BORE, ROUND STEM-BREAK; V. THICK BOWL; OVAL BASE; W/W MAKER. PERHAPS: WILLIAM WOOD, FREE IN 1718 (OS. '75); OF WILLIAM WILDER, 1717-63 FREE, WHITCROSS ST. DIR. (OS. '75).

## 7. (MAY, 1987)

C. 1750-70. L. TYPE 25; S.B.D. 2.5 MM; CLEAN CAVITY; OFF-WHITE CLAY; THIN-MEDIUM STEM; MEDIUM BOWL; FLEUR-DE-LYS (TOBACCO PLANTS?) ON SPUR, SEE BAR 146 (ii) P. 368.

8. (MAY, 1987) C. 1720-40. L. TYPE 25; S.B.D. 2 MM; WHITE CLAY; THICK BOWL; 1/R MAKER. SEVERAL POSSIBLES.

## FIG. 27.

9. (MAY, 1987)

C. 1730-60. L. TYPE 25. S.B.D. 2 MM. THICK TO THIN BOWL; SMOKE STAINED LIP ABACK; MEDIUM STEM; T/W MAKER. MANY POSSIBLES.

10. (MAY, 1987)

C. 1720-50. L. TYPE 25. S.B.D. 2.2 MM. MEDIUM TO THICK BOWL; STAINED BOWL; T/C? MAKER. SEVERAL POSSIBLES.

11. (11.7. 1987).

C. 1750-80. L. TYPE 26. S.B.D. 1.85 MM. IDENTICAL IN G.A.R. 97 P.126 NO. 35, LE CHEMINANT DESCRIBES IT THUS: 'NINEPINS ARE MOULDED ON THE LEFT OF THE BACK WITH (SIC) ON THE RIGHT, A BEWIGGED MAN IN LOOSE SHIRT & BREECHES ABOUT TO HURL A CHEESE AT THEM. BEHIND & TO THE RIGHT OF HIM, EXTENDING AROUND THE BOWL'S FRONT, IS A LARGE, WIDE-BRANCHED TREE IN FULL LEAF, PROBABLY AN OAK, & A FURTHER FEATURE IN THE BACKGROUND IS WHAT LOOKS TO BE A FISHERMAN ON A PIER.'

12. (11.7. 1987).

C. 1750-80. L. TYPE 26. S.B.D. 2 MM. ROUND STEM-BREAK, CENTRAL BORE; SMOKE LIP; MINT CONDITION MOULDING OF HANOVERIAN ARMS; W/S MAKER. NO FRONT DECORATION. MAKER UNCERTAIN, W/S PIPES RECORDED FROM BRENTFORD KILN (SEG BAR 97).

13. (11.7. 1987)

C. 1720-40. L. TYPE 25. S.B.D. 2.3 MM. THICK, SMOKE BOWL; SMOOTH SURFACE; OVAL BASE; GAUNTLET L.H.S.; BLANK R.H.S.

14. (AUG. 1987)

C. 1750-70. S.B.D. 2 MM. L. TYPE 25. IRON STAIN L.H.S./TOP OF STEM; ROUND STEM-BREAK; ROUND BASE; M/A MAKER. UNCERTAIN.

15. (AUG. 1987)

C. 1740-70. S.B.D. 2.1 MM; OVAL STEM-BREAK; SPECKLED, SHINY SURFACE; OVAL BASE; C/W MAKER. CHARLES WEAVER 1749 WEST<sup>A</sup> POKES (OS. 1975) WINDMILL ST, ST. JAMES, WEST<sup>A</sup> (C.A.T.) OR →



## FIG. 27.

## 15. (CONTINUED)

→ OR CHRISTOPHER WIGGLESWORTH 1760. SPITAL SQ. (OS. 1975).

## 16. (AUG. 1987)

C. 1730-60. L-TYPE 25. S.B.D. 2.1 MM. THICKISH BOWL; ROUND STEM BREAK; CENTRAL BORE; OVAL BASE; WORN, SPECKLED CLAY; A/S MAKER. ABRAHAM SHEPHARD OR ABRAHAM SANDS. (SEE OS. 1975)

## 17. (AUG. 1987)

C. 1720-60. L-TYPE 25. S.B.D. 2.1 MM. STEM-BORE OFF-CENTRE; SMOKED, THICKISH BOWL WITH INTERNAL PLUNGER CROSS; CROWNED G/S ON SPUR. PERHAPS GEORGE STRAY (STAW, STACE) (1) 1699-1725. F. APP. R. HIS APPS. S. APPLEBY 1717, £20. S. FARR. 1725 £4. OR GEORGE STRAY? (2) 1763 EXECUTION DOCK. D; OR GEORGE SIMPSON, FREE IN 1718 (OS. 1975)

## 18. (8.3.1989)

C. 1750-70. S.B.D. 2.1 MM. THICK, COPIOUS BOWL, SMOOTH; WT STAMP ON BASE: cf FIG. 26. NO 9. ETC.

## FIG. 28.

1. (10.9.1987)

C. 1740+ L. TYPE 26. S.B.D. 2 MM. SMOKED, THIN BOWL; IRON STAINED; SMOOTH FINISH; S/P MAKER. MAKER UNCERTAIN. Cf. SOLOMON PRICE (2). (OS. 1975). SEE VOL. I. ABOVE FOR OTHER EXAMPLES.

2. (10.9.1987).

C. 1720-50 L. TYPE 25. S.B.D. 2 MM. V. THICK BOWL; SMOKED; SMOOTH, OFF-WHITE FINISH; D/C MAKER. PERHAPS DANIEL CRABB, 1723. APP. R. CLARKENWELL. HIS APP. W. SHARPE £20. (OS. 1975)

3. (10.9.1987.)

C. 1750-80. L. TYPE 26. S.B.D. 2 MM. DUL BROWN, SPECKLED SURFACE; ROUND STEM-BREAK; HANOVARIAN ARMS MOULDED ON BOWL. M/H MAKER. UNCERTAIN. Cf. BAR 78 P. 389. POSS. MARY HEATH C. 1764-74

4. (10.9.1987).

C. 1750-80. GOOD EXECUTION OF HANOVARIAN ARMS, SOME BLURRING; LION ATON CROWN ON BACK. FEATHERS ON FRONT.

5. (10.9.1987)

C. 1750-70. L. TYPE 25. S.B.D. 2 MM. ROUND STEM-BREAK; CENTRAL GORE; CHIPPED NARROW SPUR, WT INCUSE, SEE FIG. 25. NO'S 2, 5, 6 & 7.

6. (8.10.1987)

C. 1750+ T/D BOWLSTAMP WELL PLACED; CROWN ABOVE; FLEUR-DE-LYS BELOW; SEE BAR 14 P. 68. MANY T/D DIES FROM AMERICA. SEE ALSO 'CLAY T. SMOKING PIPES FROM THE CALED PUSEY HSE. P. 195 BAR, 175.

7. (8.10.1987.)

C. 1720-60. L. TYPE 25. S.B.D. 2.5 MM. 'DROOPED' BOWL; POLISHED SURFACE; SMOKED CAVITY; S/H MAKER. STEPHEN HILLARY 1763 (MORTIMER'S D.) 1766 QT. WINDMILL ST. SUN. ASS. £200. (A. OSWALD'S SUPP. LONDON LIST.) POSSIBLY THIS MAKER.

8. (8.10.1987.) SMOOTH SURFACE. R/C MAKER. C. 1720+ A NUMBER OF POSSIBLES.

## FIG. 28.

9. (24. 12. 1987)

C. 1730-80. L-TYPE 25. S.B.P. 2.00 MM. BACK OF BOWL BROKEN; ROUND STEM-BREAK; R/P MAKER.  
R IS RETROGRADE. SEVERAL POSSIBLES.

10. (24. 12. 1987)

C. 1720-50. L-TYPE 25. S.B.D. 2.5 MM. SMOKED CAVITY; FLASH ON SPUR; T/S MAKER.

11. (24. 12. 1987)

C. 1750-70. L-TYPE 25. S.B.D. 2 MM. SMOKED. POLISHED SURFACE. SOME IRON-STAINING. N/H MAKER.  
NATHANIEL HEBBLEWHITE 1763, GRAYS INN LANE. DIR. (OS. 1975).

12. (1988) QUEENHITHE

C. 1750-80. L-TYPE 25. S.B.D. 2 MM. TRACE OF CAVITY BASAL MARK BELOW STEM-WIRE DEBRIS.  
CHIPPED R.H.S. BURNISHED BOWL; NO FRONT DECORATION. HANOVARIAN ARMS. NO RIBBAND BELOW GARTER.  
C/S MAKER. MAKER UNCERTAIN.

13. (1988) PAUL'S WHARF/TRIG LANE.

C. 1725-60? L-TYPE 25. S.B.D. 2 MM. ROUND STEM-BREAK, BLACK DISCOLOURED STEM; DIAPER STAMP;  
LOCK WITHIN OVAL, TWO STARS & W/B?. Cf. 'MAKERS' MKS. ON CLAY PIPES FOUND IN LONDON  
PART II 1965.' D.R. ATKINSON. RELIEF. TAVERN PIPE?

14. (26. 9. 88) PAUL'S WHARF.

C. 1741+. S.B.O. 2. IMPART OF THE 'VERNON BOWL'. SEE BAR 97, P. 87.

15. (1988) CITY FORESHORE.

C. 1740-60. L-TYPE 25. S.B.D. 2.75 MM. THICK BOWL. SMOKED INNER LIP. R/R MAKER. A NUMBER  
OF POSSIBLES.

16. (1988) CITY FORESHORE.

C. 1720-40. L-TYPE 25. S.B.D. 2.3 MM. SMOKED. OVAL GAZE. 1/4 WITH CROWNS ON SIDES.  
A NUMBER OF POSSIBLE MAKERS.

FIG. 29.

1. (1988) PAUL'S WHARF.  
C. 1750-80. L-TYPE 25. 2 MM. SMOKED LIP. P.O.W. FEATHERS ON BACK. ROSE & THISTLE FRONT. CROWN ATOP. I/S MAKER. PERHAPS JOHN SAYELL (2) 1763-90. D. 1780 MOORFIELDS. 1763 BUNHILL FIELDS. (OS. 1975)
2. (21.1.1989) PAUL'S WHARF / BLACKFIARS BRIDGE.  
C. 1750-80. S.B.D. 2 MM. CF. FRONT OF NO. 1. ABOVE. HANOVARIAN ARMS.
3. (6.2.1989)  
C. 1740-80. S.B.D. 2 MM. THICK; ROUND STEM-BREAK. W/W MAKER. CF FIG. 27 NO 6.
4. (6.2.1989)  
C. 1750-80. S.B.D. 2 MM. OVAL STEM BREAK; POLISHED SURFACE; THICKISH BOWL; INTERNAL PLUNGER MARK. CROWNS ON SPUR. CF THOSE IN VOL. I.
5. (8.3.1989)  
C. 1740-80. S.B.D. 2 MM. THICKISH, CHIPPED BOWL; ROUND STEM-BREAK. A/G MAKER. UNRECORDED TO DATE.
6. (1989)  
C. 1720-40. S.B.D. 2 MM. A/A MAKER. CF VOL. I 1720-80, FIG 7, 12. PERHAPS ANTHONY ATKINSON OR ANTHONY ANDREWS.
7. (1989)  
C. 1730-60. S.B.D. 1.75 MM. I/G MAKER. CF VOL. I FIG. 2 NO 5; FIG. 12. NO 1. SEVERAL POSSIBLE MAKERS.
8. (1989)  
C. 1720-40. S.B.D. 2.1 MM. S/P MAKER. CF FIG 28 NO 1.
9. (1989) C. 1760-80. S.B.D. 1.9 MM. MEDIUM/THIN BOWL; W/S MAKER. A NUMBER OF POSSIBLES.

FIG. 29

10. (1989)

C. 1760-80. S.B.D. 1.9 mm. ROUND STEM BREAK, CENTRAL BORE; OVAL BASE; M/H MAKER. UNCERTAIN

11. (1989) QUEENHITH

C. 1768-80. S.B.D. 1.8 mm. SMOKED. PINCHED HEEL. MOTTO: SEMPER EADEM. cf BAR 97 P.105; 5.

BLACKFRIARS to DOWGATE (N. BANK.)

R. THAMES.

1/1 - C.1770 to 1820.

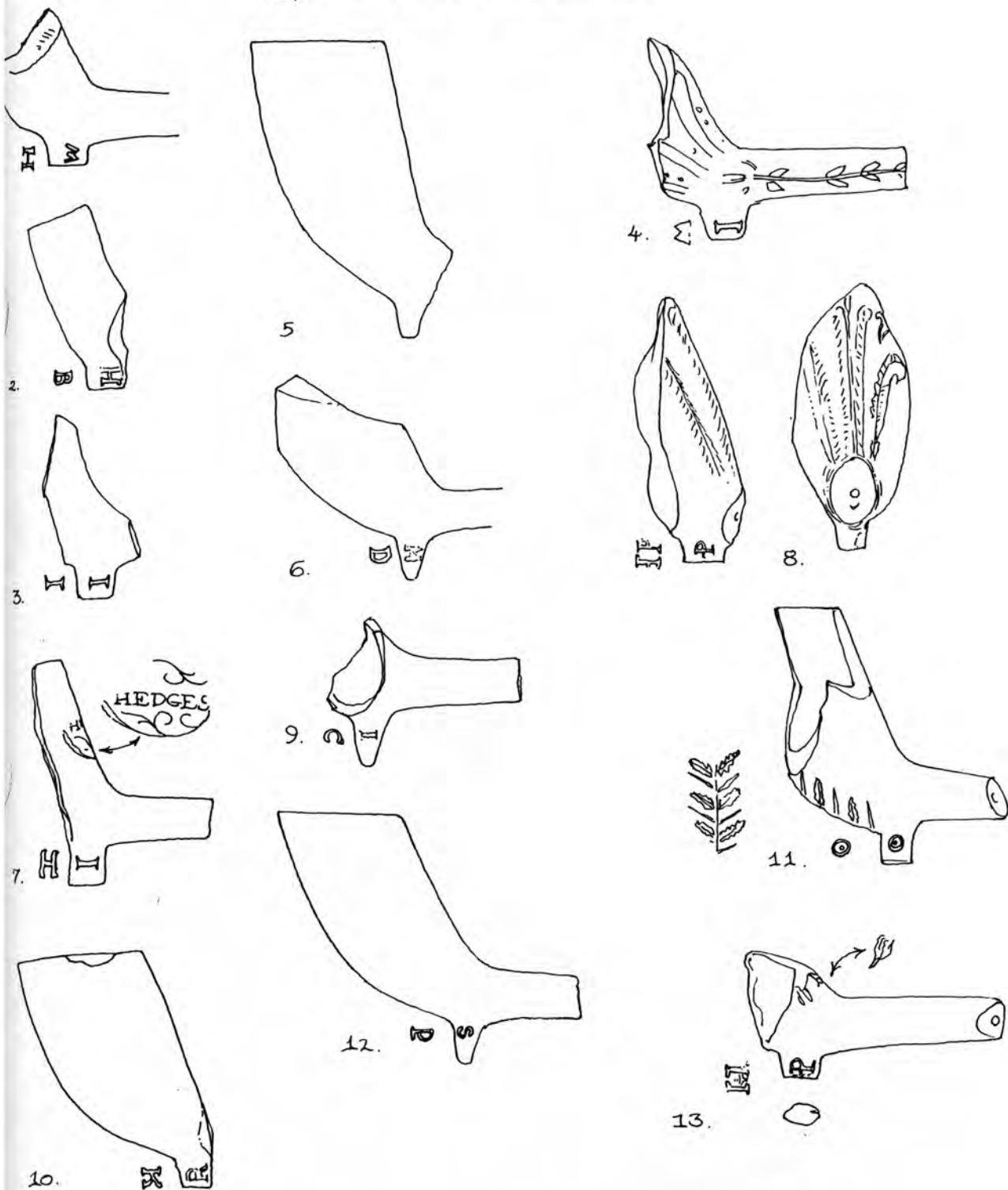
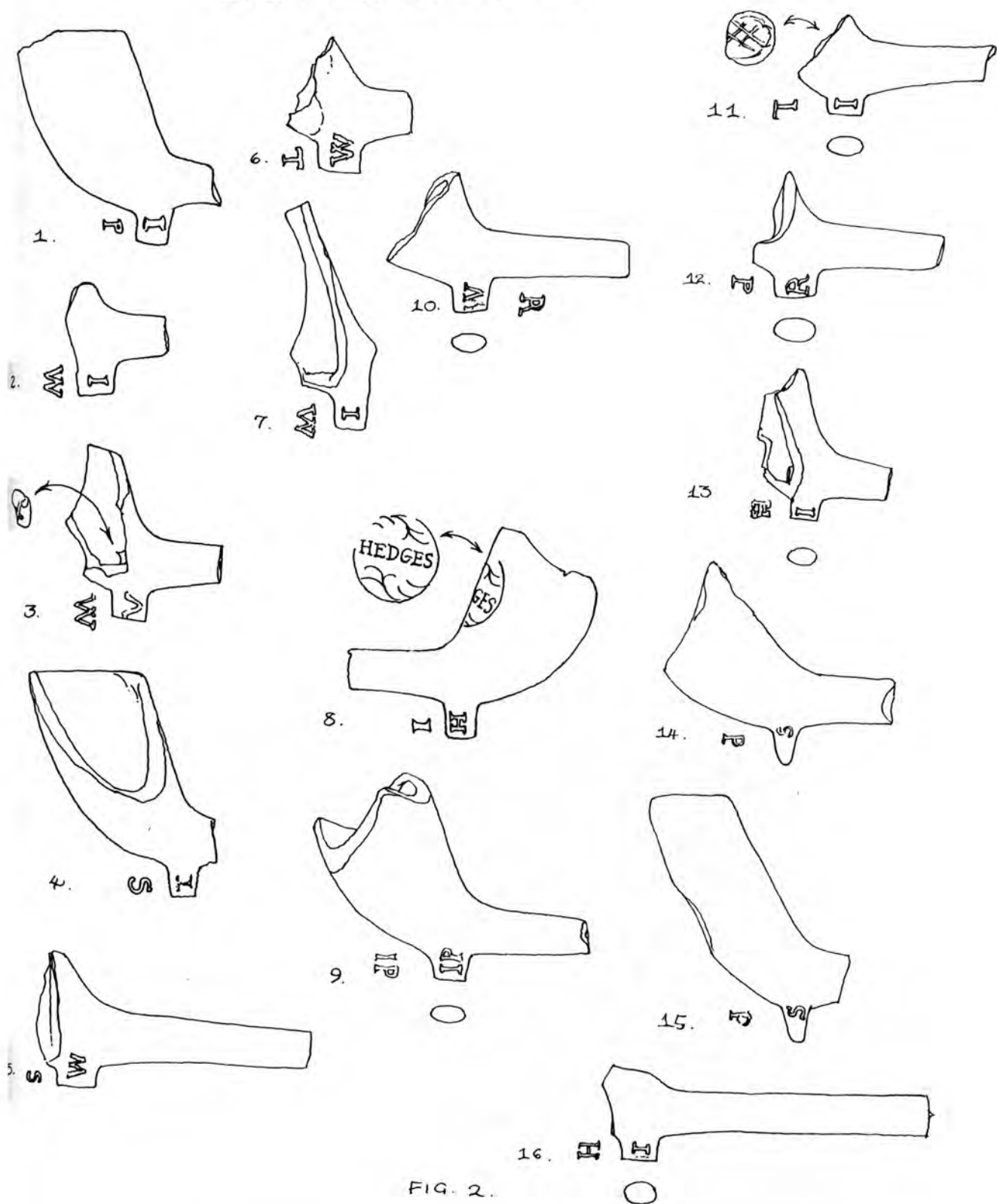


FIG. 1.

## BLACKFRIARS to DOWGATE (N. BANK.)

R. THAMES.

1/1. C. 1770 to 1820.

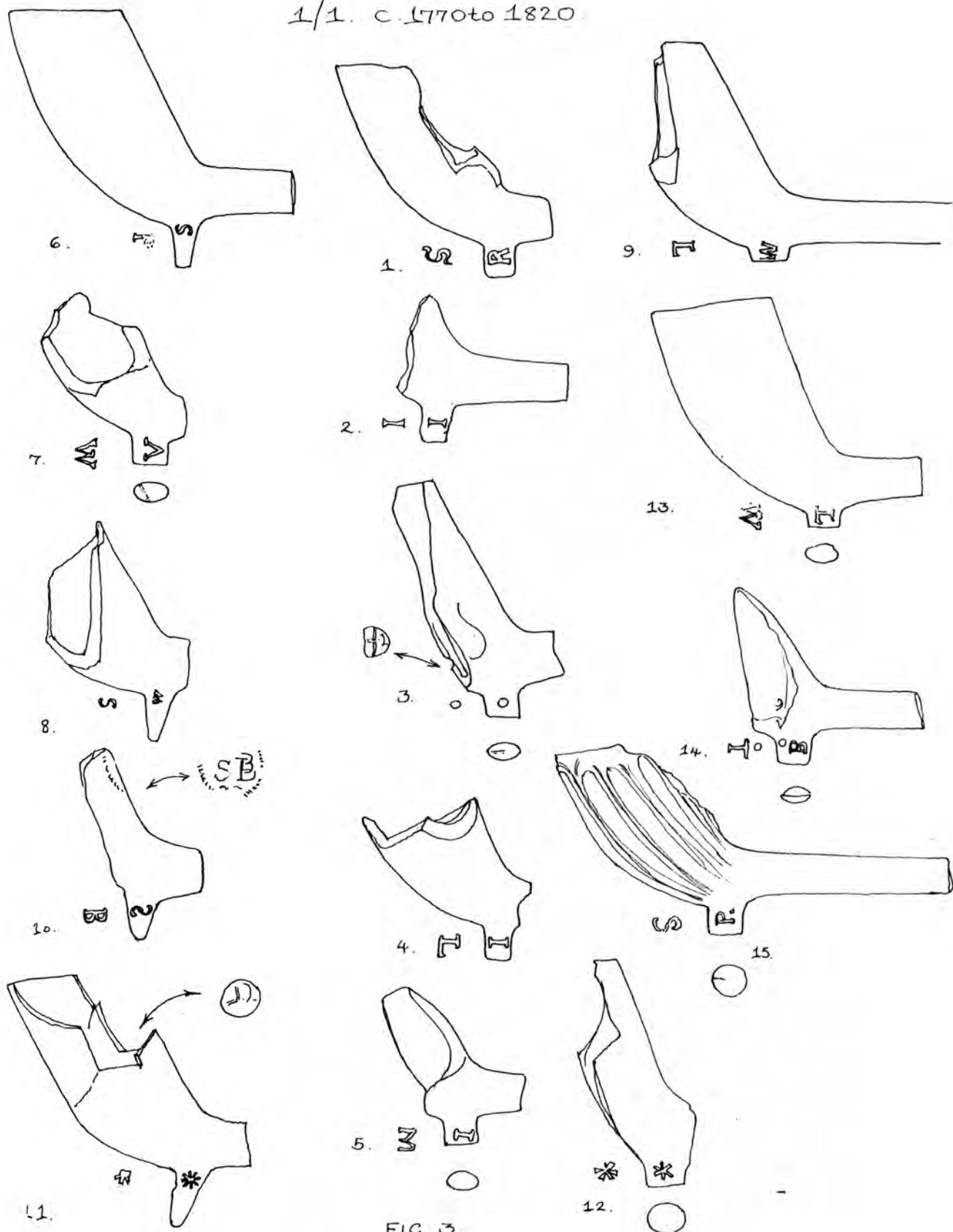




BLACKFRIARS to DOWGATE (N.BANK.)

R. THAMES

1/1. C. 1770 to 1820.



## BLACKFRIARS to DOWGATE (N. BANK.)

R. THAMES.

1/1. C. 1770 to 1820.

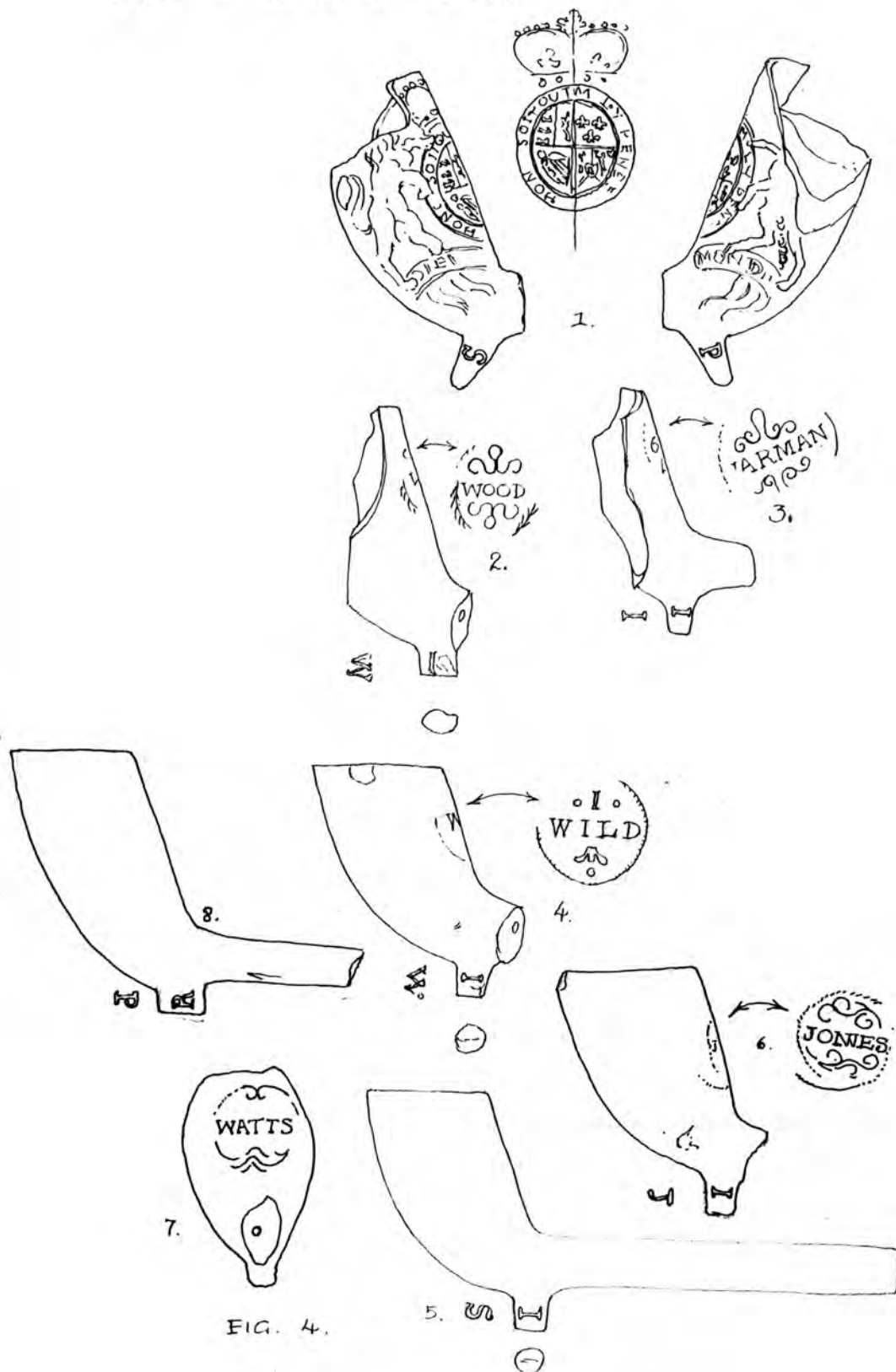


FIG. 1.

## 1. (21. 11. 82.) PAUL'S WHARF.

C. 1780-1800. L. TYPE 25. S.B.D. 2 MM. STEM AND BOWL BASE FRAGMENT IN GREYISH CREAM CLAY. BASE MOULD-LINE TRIMMED OFF, DATING PIPE TO THE PRE-1800'S.  
SMALL, OVAL/ROUND BASE, LETTERED W/H. VERY PROBABLY TOO LATE FOR WILLIAM HEATH.

## 2. (14. 2. 83.) PAUL'S WHARF.

C. 1790-1810. L. TYPE 27. S.B.D. 1.7 MM. BOWL/SPUR FRAGMENT. GREYISH BROWN CLAY, POLISHED. THIN, OVAL SPUR, LETTERED H/B. SPUR MOULD-LINE SUGGESTS A POST 1800 DATE.

## 3. (14. 2. 83.) PAUL'S WHARF.

C. 1790-1810. L. TYPE 27. S.B.D. 1.6 MM. BOWL/SPUR FRAGMENT. IRON-STAINED. THIN, OVAL SPUR, LETTERED I/I. NO MOULD LINE, SO DATING PIPE AFTER 1800. POSSIBLY JOHN JONES (2), 1799, MILE END; JAMES JONES, 1799; JOHN JARMAN (3) 1805-47; OR JOHN JEWESTER, 1805-62.

## 4. (21. 11. 82.) BLACKFRIARS.

C. 1800-20. L. TYPE 27. S.B.D. 1.6 MM. IRON-STAINED BOWL/STEM FRAGMENT WITH DOT AND PLUME DESIGN ON BOWL AND BRANCH WITH LEAVES PATTERN ON STEM. THIN, OVAL SPUR LETTERED I/W.

## 5. (17. 12. 82.) BROOKS WHARF / QUEENHITHE.

C. 1780-1810. S.B.D. 2 MM. SMOOTH, WHITISH, CREAM BOWL. LONG, UPRIGHT SPUR. PROBABLY NOT MADE IN LONDON. POSSIBLY IMPORTED CLAY.

FIG. 1.

6. (26. 11. 82.) PAUL'S WHARF.

C. 1800-20. L. TYPE 28. S.B.D. 1.5 MM. BOWL/STEM FRAGMENT, CREAMY CLAY, IRON STAINS. POINTED SPUR, LETTERED H/D.

7. (8. 11. 82.) QUEENHITHE.

C. 1811-21. L. TYPE 27. S.B.D. 2 MM. BACK OF BOWL; OVAL SPUR, WITH MOULD-LINE; LETTERED I/H. 'HEDGES' STAMP ON BOWL (INCUSE). JOHN HEDGES(?) WAS WORKING IN GRAYS INN LANE AT THIS TIME.

8. (14. 4. 83.) PAUL'S WHARF.

1780-1800. L. TYPE 25. S.B.D. 1.5 MM. DISCOLOURED BACK OF P.Q.W.F. BOWL. SLIM, OVAL SPUR, WITHOUT SEAM ON BASE, SO PROBABLY DATING IT BEFORE 1800. INTRIGUING MAKER'S INITIALS: P, L.H.S; R.H.S. POSSIBLY H BUT VERY OBSCURE.

9. (14. 4. 83.) PAUL'S WHARF.

C. 1780-90. L. TYPE 26. S.B.D. 1.98 MM. SPUR/STEM FRAGMENT. MAKER: I/C. A NUMBER OF POSSIBLE MAKERS.

10. (14. 4. 83.) PAUL'S WHARF.

C. 1780-1800. L. TYPE 27. S.B.D. 1.8 MM. WIDE-MOUTHED, IRON-STAINED, WELL-SMOKED BOWL. NARROW, OVAL SPUR. MAKER: R/K. UNKNOWN.

## FIG. 1.

6. (26. 11. 82.) PAUL'S WHARF.

C. 1800-20. L. TYPE 28. S.B.D. 1.5 MM. BOWL/STEM FRAGMENT, CREAMY CLAY, IRON STAINS. POINTED SPUR, LETTERED H/D.

7. (8. 11. 82.) QUEENHITHE.

C. 1811-21. L. TYPE 27. S.B.D. 2 MM. BACK OF BOWL; OVAL SPUR, WITH MOULD-LINE; LETTERED I/H. 'HEDGES' STAMP ON BOWL (INCUSE). JOHN HEDGES(?) WAS WORKING IN GRAYS INN LANE AT THIS TIME.

8. (14. 4. 83.) PAUL'S WHARF.

1780-1800. L. TYPE 25. S.B.D. 1.5 MM. DISCOLOURED BACK OF P.O.W.F. BOWL. SLIM, OVAL SPUR, WITHOUT SEAM ON BASE, SO PROBABLY DATING IT BEFORE 1800. INTRIGUING MAKER'S INITIALS: P, L.H.S; R.H.S. POSSIBLY H BUT VERY OBSCURE.

9. (14. 4. 83.) PAUL'S WHARF.

C. 1780-90. L. TYPE 26. S.B.D. 1.98 MM. SPUR/STEM FRAGMENT. MAKER: I/C. A NUMBER OF POSSIBLE MAKERS.

10. (14. 4. 83.) PAUL'S WHARF.

C. 1780-1800. L. TYPE 27. S.B.D. 1.8 MM. WIDE-MOUTHED, IRON-STAINED, WELL-SMOKED BOWL, NARROW, OVAL SPUR. MAKER: R/K. UNKNOWN.

## FIG. 1.

11. (12.8.83). PAUL'S WHARF.

C. 1790-1810. S.B.D. 2 MM. DISCOLOURED, BROKEN BOWL - L. 25/27 SHAPE. MOULD LINE ON SPUR. LARGE CORN PATTERN FRONT SEAM, BLANK BACK OF BOWL. ANNULET AND PELLET ON SPUR. A DIFFICULT BOWL TO DATE, BUT THIS SPUR MOTIF WAS USED BY 19<sup>th</sup> MAKERS - E.G. REYNOLDS FROM BIRMINGHAM.

12. (22.8.83) - PAUL'S WHARF.

C. 1784-90. L. TYPE. 26 S.B.D. 2.1 MM. DISCOLOURED BOWL WITH GREY DAPPLED PATCHES L.H.S. S/P ON SPUR. PROBABLY SAMUEL PEARCE, 1784, BRISTOL POLLS.

13. (10.8.84) PAUL'S WHARF.

C. 1780-1800 L. TYPE 25/27. S.B.D. 1.9 MM. IRON TINGED P.O.W.F. BOWL (BASE OF PLUME JUST SHOWING); HORIZONTAL STRIATIONS IN CAVITY; ELIPTICAL STEM BREAK - CENTRAL BORE; ROUGHLY OVAL SPUR; MOUNDED LETTERS ON SIDES: P/H? SHOWS SIGNS OF HAVING HAD PREVIOUS LETTERS ENGRAVED. MAKER: UNCERTAIN. LIKELY BY SAME MAKER AS NO. 8.

## FIG. 2.

## 1. (25.3.83.) TRIG LANE STAIRS / BLACKFRIARS.

C. 1780-1820. L. TYPE 27. S.B.D. 2 MM. THICKISH BOWL WITH CHIPPED FRONT LIP, UPRIGHT, CYLINDRICAL SPUR, LETTERED I/P. POSSIBLY: JOHN PAYNE, 1799-1811, GT. WINDMILL ST.

## 2. (13.5.83.) TRIG LANE STAIRS / BLACKFRIARS.

C. 1780-1800. L. TYPE 27. S.B.D. 1.6 MM. GREYISH BOWL FRAGMENT. WELL-SMOKED. NARROW OVAL BASE. MAKER I/W. POSSIBLY: JAMES WOODROFFE, 1799-1817, OLD ST.

## 3. (7.6.83.) TRIG LANE STAIRS / BLACKFRIARS.

C. 1780-90. L. TYPE 27. S.B.D. 1.5 MM. DISCOLOURED BOWL FRAGMENT WITH PART OF INTERNAL PLUNGER CROSS EXPOSED. THIN STEM. THIN OVAL BASE. WELL-SMOKED. LARGE MAKER'S INITIALS: V/W. PROBABLY VALENTINE WATTS, 1749, LAMBETH.

## 4. (23.6.83.) TRIG LANE STAIRS / BLACKFRIARS.

C. 1770-90. L. TYPE 27. S.B.D. 2 MM. BUFF COLOURED BOWL, L.H.S. BROKEN, SMOKE STAINS IN CAVITY. THIN, SQUARISH SPUR. MAKER I/S. OR POSSIBLY T/S. JOHN SAYELL(2), 1763-90 MOORFIELDS AND BUNHILL FIELDS.

## 5. (26.7.83.) TRIG LANE STAIRS / BLACKFRIARS.

C. 1770-90. L. TYPE 27. S.B.D. 1.9 MM. STEM / BASE FRAGMENT, NARROW, OVAL SPUR, LETTERED W/S. A NUMBER OF POSSIBLE MAKERS, INCLUDING WILLIAM SMITH, 1781, BRISTOL POLLS, ST. ANDREW, HOLBORN; WILLIAM SHOWELL, 1784, BRISTOL POLLS, WHITCROSS ST.

## 6. (26.7.83.) TRIG LANE STAIRS / BLACKFRIARS.

C. 1770. L. TYPE 27. S.B.D. 1.75 MM. BOWL / BASE FRAGMENT, THIN SIDES, LONG, OVAL SPUR, SEAM 'OFF-KEY', LETTERED W/T. POSSIBLY MADE BY WILLIAM TAPPIN, 1763, BLACKFRIARS, ALTHOUGH HIS PIPES USUALLY BEAR THE FAMILIAR BASE-STAMP



## FIG. 2

7. (9.8.83.) QUEENHITHE.

C. 1780-1800. L. TYPE 27. S.B.D. 1.65 MM. BOWL PIECE, FRONT BROKEN, LONG OVULAR SPUR, LETTER I/W. POSSIBLY JONAS WICKHAM, 1774-84, BRISTOL POLL WAPPING, OR JAMES WOODROFFE, 1799-1817, OLD. ST.

8. (13.10.83.) QUEENHITHE.

C. 1811-21. L. TYPE 27. S.B.D. 2 MM. BOWL, BROKEN TOP/FRONT, WITH INCISE BACKSTAMP OF 'HEDGES' IN SERIF LETTERS WITHIN FOLIATED CIRCLE I/H ON SPUR. JOHN HEDGES, 1811-21, GRAYS INN LANE. TP. CO. D. cf. FIG. 1, NO. 7.

9. (23.9.83.) PAUL'S WHARF.

C. 1780-1810. L. TYPE 25. S.B.D. 1.75 MM. LATE L 25 TYPE, IP MONOGRAMS ON SPUR. SCRAPED BASE, OVAL. SIMILAR FROM KENWOOD (In LITT. OSWALD, 1983) AND W. P.O.W.F. BOWLS FROM PUTNEY, ATKINSON COLL., SEE ALSO FIG. 1. NO. 8. LE CHEMINANT, BAR 97, P. 143, SHOWS ANOTHER IP MONOGRAM ON A STEM PIECE, C. 1730; PERHAPS BY THE SAME MAKER OR MAKERS IF A FATHER AND SON CONCERN. JOHN PAYNE, fl. 1799-1811 CT. WINDMILL ST. IS ONE POSSIBILITY.

10. (1983). QUEENHITHE/ SOUTHWARK BRIDGE.

C. 1780-1820. L. TYPE 27. S.B.D. 1.9 MM. BOWL FRAGMENT, BUFF, DARK GREY NOT STAIN L. H.S. OVAL, THIN SPUN. MAKER W/R. PERHAPS WILLIAM RUSSELL 1774-1784 BRISTOL POLLS. WAPPING WESTMINSTER. (? 1 & 2) 1805-25. TP. CO. WARDEN 1825. FREE BRISTOL 1768, OR WILLIAM RUSCOE, 1805-11. BOW. D.

11. (12.8.83.) QUEENHITHE.

C. 1780-1820. L. TYPE 27. S.B.D. 1.6 MM. BOWL FRAGMENT WITH I/L ON OVAL SCRAPED SPUR. 'GRID' RELIEF PLUNGER MARK. POSSIBLY JOHN LEACH 1805-39, HORSLEY DOWN; JAMES LAWRENCE 1805-11. W. SMITHFIELD.

FIG. 2.

12. (20. 1. 84.) TRIG LANE STAIRS / BLACKFRIARS.

C. 1770-1800. L. TYPE 27. S.B.D. 2 MM. GREY COLOURED FRAGMENT, STOCKY SPUR, OVAL, NO MOULD LINE. WELL-MOULDED INITIALS: R/P. PERHAPS RICHARD PINKARD, 1761, OLD MONTAGUE ST. WHITECHAPEL. £200 SU. ASS. OR ROBERT PATTISON, 1755, GOULD ST. BERMONDSEY. £400 SU. ASS.

13. (20. 1. 84.) TRIG LANE STAIRS / BLACKFRIARS.

C. 1800-20. L. TYPE 27. S.B.D. 1.5 MM. SMALL-SIZE, DISCOLOURED FRAGMENT. SMALL, OVAL SPUR. NO MOULD-LINE. MAKER I/H OR I/E. MOST LIKELY I/H. PERHAPS JOHN HURST, 1808-49 SMITHFIELD. D, OR JOHN HEDGES (1) 1811-21, GRAYS INN LANE. WARDEN TP. CO. D. Cf. NO. 8, A MUCH LARGER L.27.

14. (20. 1. 84.) TRIG LANE STAIRS / BLACKFRIARS.

C. 1784-90. L. TYPE 28. S.B.D. 2.01 MM. POINTED SPUR PIPE, DAPPLED GREY / BLUE. THICK BOWL FABRIC. SMALLISH SPUR WITH LETTERING S/P. LIKELY TO BE SAMUEL PEARCE, 1784, BRISTOL POLLS.

15. (20. 1. 84.) TRIG LANE STAIRS / BLACKFRIARS.

C. 1784-90 L. TYPE 28. S.B.D. 2.15 MM. L.H.S. PART OF TAIL, MEDIUM THICK-RIMMED S/P PIPE. MAKER AS ABOVE.

16. (17. 10. 84.)

1800-20. L. TYPE 27. S.B.D. 2 MM. GRAY FABRIC; SMOOTH, OVAL SPUR; MAKER I/H. SEE NO. 13 FOR MAKERS.

FIG. 3.

1. (3.2.84.) TRIG LANE STAIRS / PAUL'S WHARF.

C. 1800-20. L. TYPE 27. S.B.D. 2 MM. LARGE, BROKEN, MEDIUM THICK BOWL, WHITISH FABRIC, SLIGHT FORWARD SLOPE TO RIM. LONG, CYLINDRICAL SPUR, TRACES OF MOULD LINE MAKER R/S. LIKELY RICHARD SIMMONDS, 1805. TP. CO. SIMILAR FROM OLD KENT RD, AND WAPPING (RIBBED AND SMALLER).

2. (3.2.84.) TRIG LANE STAIRS / BLACKFRIARS.

C. 1800-20. L. TYPE 27. S.B.D. 1.75 MM. BOWL FRAGMENT, BROWNY-GREY, SOME IRON STAINS, DARK GREY CAVITY. IRREGULAR, ROUNDISH SPUR. MAKER I/I. POSSIBLY: JOHN JONES (2), 1799, MILE END. D.; JAMES JONES, 1799, WHITECROSS ST. D. 1805, T.P. CO., 1802-40. FEATHERSTONE ST. CITY RD. D. THERE ARE OTHER POSSIBILITIES.

3. (3.2.84.) TRIG LANE STAIRS / BLACKFRIARS.

C. 1790-1820. S.B.D. 1.85 MM. TRANSITIONAL TYPE L 25/27. SCRAPED, OVAL BASE. BLACKENED CAVITY, INTERNAL PLUNGER CROSS. SPUR, OBLIQUE IN PROFILE. RAISED DOTS ON SIDES. PERHAPS A MOULD-MAKER'S MARK OR A PIPE-MAKER'S MARK OF RECOGNITION.

4. (17.2.84.) TRIG LANE STAIRS / PAUL'S WHARF.

C. 1810-20. L. TYPE 27. S.B.D. 2 MM. IRON STAINED, BROKEN BOWL. NARROW SPUR, WITH MOULD-LINE. MAKER I/L. A NUMBER OF POSSIBLE MAKERS INCLUDING JOHN LEACH, 1805-39, HORSLEY DOWN.

5. (17.2.84.) QUEENHITHE.

C. 1790-1810. L. TYPE 27. S.B.D. 1.5 MM. WHITISH FRAGMENT, SMOOTH BASE TO SPUR - OVAL. ROUND STEM. MAKER I/M. PERHAPS JOHN MOULD, 1799-1800, D.; OR JAMES MOULD, 1802-4, HOLBORN. D.

6. (17.2.84.) TRIG LANE STAIRS / BLACKFRIARS.

C. 1784-90. L. TYPE 26. S.B.D. 2 MM. 'JUG' SHAPED, DISCOLOURED BOWL. THIN STEM. MAKER S/P. PROBABLY SAMUEL PEARCE, 1784, BRISTOL POOLS. Cf. FIG. 1 NO. 12.

FIG. 3

7. (5.5.84) PAUL'S WHARF.  
C. 1770+ L-TYPE 27. S.B.D. 1.9 MM. DISCOLOURED FABRIC, UNSMOKED CAVITY, OVAL SPUR, SMOOTH BASE WITH SHALLOW DIAGONAL LINE. MAKER V/W. OSWALD CITES VALENTINE WATTS fl. 1749, LAMBETH £200 SU. ASS. SEE ALSO BAR 97, P.77 NO. 6. IT SEEMS WATTS HAD A LONG WORKING LIFE, OR PERHAPS A SON TOOK OVER IN THE LATER PART OF THE CENTURY.
8. (5.5.84) TRIQ LANE STAIRS / BLACKFRIARS BRIDGE.  
C. 1780-1800. L-TYPE 26. S.B.D. 1.9 MM. GREYISH FRAGMENT, ROUND STEM BREAK WITH CENTRAL BORE. SLOPING SPUR. SMALL W/S LETTERS. EITHER WILLIAM SMITH 1781 BRISTOL POLLS. ST. ANDREW, HONBORN, OR WILLIAM SHOWELL 1784, BRISTOL POLLS. WHITCROSS ST.
9. (10.8.84) PAUL'S WHARF.  
C. 1770-85. L-TYPE 25. S.B.D. 2.01 MM. SMOOTH, GREYISH, BULBOW BOWL; ROUND STEM BREAK; MEDIUM THIN STEM; MEDIUM BOWL THICKNESS; SMOKED CAVITY; LARGE FLAT INTERNAL BASE; SMALL, SHALLOW, ROUND BASE, SCRAPED; MAKER W/L. PERHAPS WILLIAM LANDSOWN (1) 1784. BRISTOL POLLS. SHADWELL.
10. (24.2.85) PAUL'S WHARF.  
C. 1770-1820. L-TYPE 26? S.B.D. 2 MM. GREYISH FRAGMENT; RETROGRADE S/B ON CHIPPED SPUR; S B BACK-STAMP, CARELESSLY IMPLANTED. PERHAPS 1756, SARAH BETT, GEORGE ST., THE MINT, SOUTHWARK. £200 SUN. ASS; OR POSSIBLY SAMUEL BIRCH, 1821-36. ASS. T. P. CO. D. WHITECHAPEL. JUDGING BY THE STYLE OF PIPE - THE FIRST MAKER SEEMS MORE LIKELY.
11. (28.8.85) PAUL'S WHARF.  
C. 1770-1800. L-TYPE 26. S.B.D. 1.9 MM. SMOKED LIP; THIN, WAISTED BOWL; STARS ON SPUR SIDES. INTERNAL BOWL CROSS.
12. (28.8.85) TRIQ LANE STAIRS / PAUL'S WHARF.  
C. 1770-1800. L-TYPE 25. S.B.D. 2 MM. IRON STAINED BACK; FLAT, ROUND BASE; STARS ON SPUR.

FIG. 3.

13. (24.7.85.) PAUL'S WHARF.

C. 1770-1800. L. TYPE 27. S.B.D. 2MM. VERY THIN BOWL; SMOKED CAVITY; ROUND STEM-BREAK-CENTRAL BORE; LOZENGE/OVAL SPUR; T/W MAKER: THOMAS WOOD, 1763-C. 1800. WHITCROSS ST. D. PIPE, BEING A GOOD POSSIBILITY.

14. (14.11.85.)

C. 1790-1820. L. TYPE 27. S.B.D. 1.5MM. NARROW BASE WITH MOULD-LINE; OVAL STEM-BREAK; B/T WITH PELLETS, MOULD-IMPARTED. SEEMS TOO LATE FOR BENJAMIN TURNER, 1749 WEST<sup>R</sup>. POLLS. PERHAPS A SON. A BENJAMIN TURNER IS ALSO NOTED IN 1784, GRAVESEND. APP. REG.

15. (27.11.85.) BROOK'S WHARF.

C. 1800-20. L. TYPE 27. S.B.D. 2MM. OBLIQUE SPUR BASE; ROUND STEM-BREAK; SMOKE-TINGED CAVITY LIP; THICK & THIN REEDS MOULD-IMPARTED ON BOWL (WHICH IS SLOPING TO L.H.S.). R/S MAKER: RICHARD SIMMONDS. 1805. TP. CO. SIMILAR WESTMINSTER & WAPPING.

FIG. 4.

1. (27. 8. 84.) PAUL'S WHARF.

C. 1770-90. L. TYPE 26. S.B.D. 2.1 MM. ALGAE GRIMED MOULDING OF HANOVARIAN ARMS - GOOD ENGRAVING THOUGH WORN IN PLACES. MOTT 'HONI SOIT QUI MAL Y PENSE' CORRECTLY SPOEL; 'DIEU ET MON DROIT' ON RIBBON. HEARTS VISIBLE BEHIND ERECT LION. ARMS USED UNTIL 1801, BUT CONTINUES ON PIPES INTO THE 1820'S (SEE LE CHEN. BAR 97). S/P MAKER. EITHER SOLOMON PRICE (3) YET TO BE RECORDED, OR SAMUEL PEARCE 1784, BRISTOL POLLS. CF. BAR 97 P. 114, NO. 20. PROBABLY BY SAME MAKER.

2. (7. 12. 1986)

C. TEMP. GEO. III. S.B.D. 1.75 MM. SMOKED, STRIATED CAVITY. BRITTLE, THINNISH STRUCTURE; T? W MAKER. INCUSE STAMP OF WOOD ON BACK. A STYLE UNCOMMON BEFORE THE 1770'S. VERY SIMILAR 'SCROLLS' APPEARING ON BACKSTAMP<sup>M</sup> OF SAVELL & WEEKS. AN IDENTICAL STAMP CAN BE SEEN IN S.C.P.R. N/L NO. 12 ON P. 35. THIS IS ASSOCIATED WITH A POTTERY GROUP OF C. 1730-60. BUT IT SEEMS MORE PROBABLE THAT THE BOWL DATES AFTER 1770 JUDGING BY OTHER CONTEMPORARY MARKS. I WOULD PERSONALLY DATE THIS MARK 1770-1820.

3. (7. 12. 1986) QUEENHITHE.

C. 1810-20. S.B.D. 1.5 MM. OVAL STEM BREAK, CENTRAL BORE; FLASHED SPUR; 'JARMAN' BOWLSTAMP WITH SIMILAR SCROLLS TO ABOVE. JOHN JARMAN (3) 1805-47. BISHOPSGATE. TP. CO. D. (OS. 1975). OTHERS FROM BILLINGSGATE (JAZEMBOWSKI COLL.).

4. (13. 10. 1986) QUEENHITHE/BROOK'S WHARF.

C. 1810-20. L. TYPE 27. S.B.D. 1.9 MM. THICKISH, SMOKED BOWL. JOSEPH WILD MAKER; OS. NOTES, IN LIT. 1986: '1809, HORSLEY DOWN (D. BART), P. REGS. ST. JOHN, PIPE MARKED THE MAZE TOOLEY ST. C. 1800'.

5. (7. 12. 1986) PAUL'S WHARF.

C. 1810-20. L. TYPE 27. S.B.D. 1.75 MM. WELL-SMOKED CAVITY; DISCOLOURED FABRIC; 1/S MAKER. A NUMBER OF POSSIBLE MAKERS.

6. (10. 9. 1987)

C. 1810-40. L. TYPE 27. S.B.D. 1.8 MM. SMOKED; R.H.S. OF BOWL MISSING; SCRAPED BASE - NO MOULD LINE. I/J ON SPUR. JOHN JONES (2) 1799 MILE END RD. OR; JAMES JONES 1799-1840. (OS. 1975). SIMILAR WATERLOO/A WEST<sup>R</sup>.

FIG. 4.

7. (6.2.1989)

C. 1770+ L-TYPE 27. S.B.D. 1.45 MM. V/W SPUR. SPUR, SCRAPEO. 'WATTS' ON BOWL. 1749. LAMBETH  
£200. S.U. ASS (O.S. 1975). SEE BAR 97 P. 72. PRESUMABLY WATTS WORKED WELL INTO THE 18<sup>th</sup> C.

8. (1989)

C. 1780-1810. S.B.D. 1.5 MM. VERY THIN BOWL; CHIPPED FRONT; SLENDER STEM; R/P MAKER.  
PERHAPS RICHARD PINKARD 1761, OLD MONTAGUE ST. WHITECHAPEL £200 S.U. ASS. (BAR 14)



# BLACKFRIARS to DOWGATE (N. BANK.)

R. THAMES.

1/1 - C.1800 to 1860

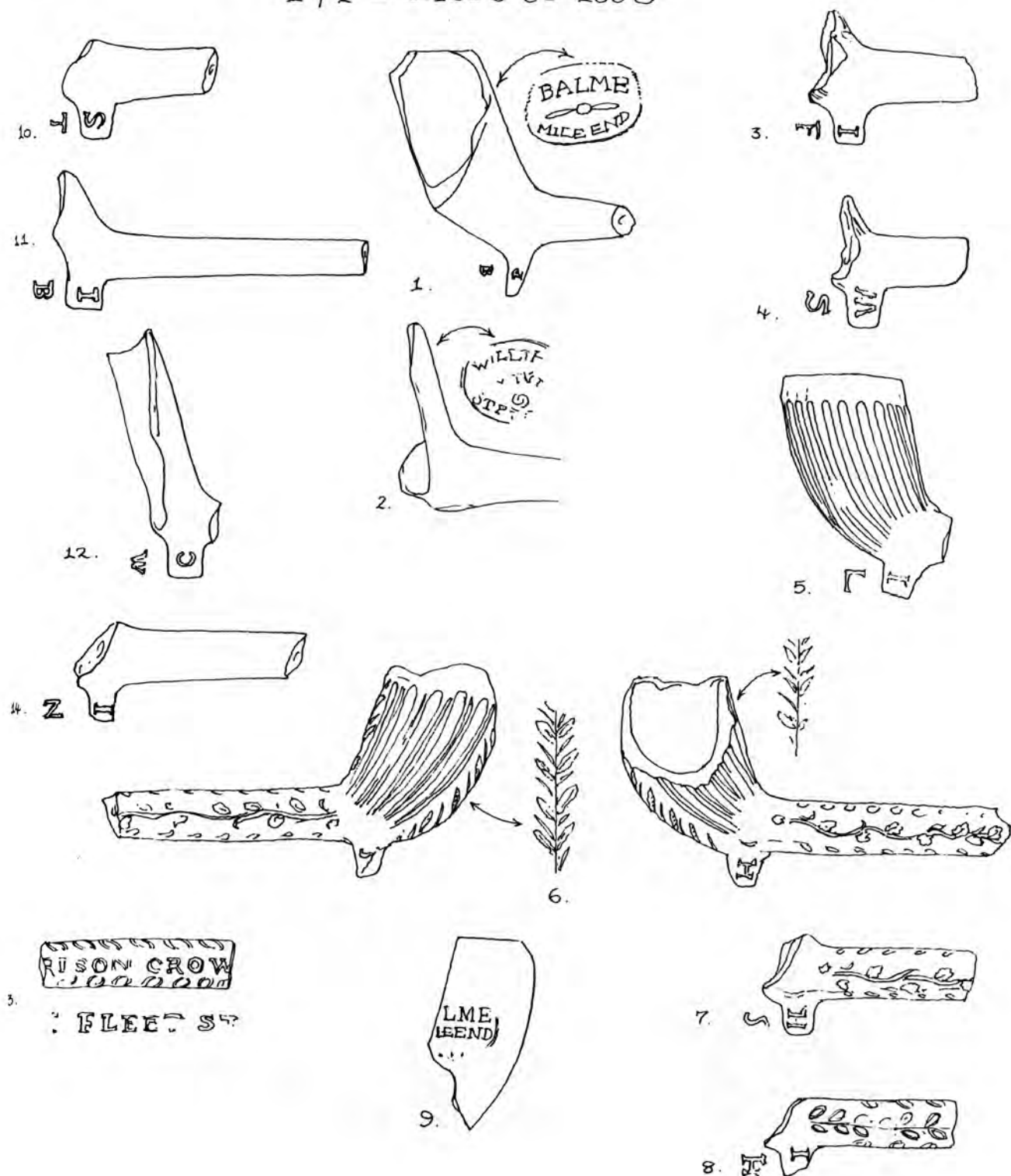


FIG. 1.

BLACKFRIARS to DOWGATE (N. BANK.)

R. THAMES.

1 / 1 - C.1800 to 1860.

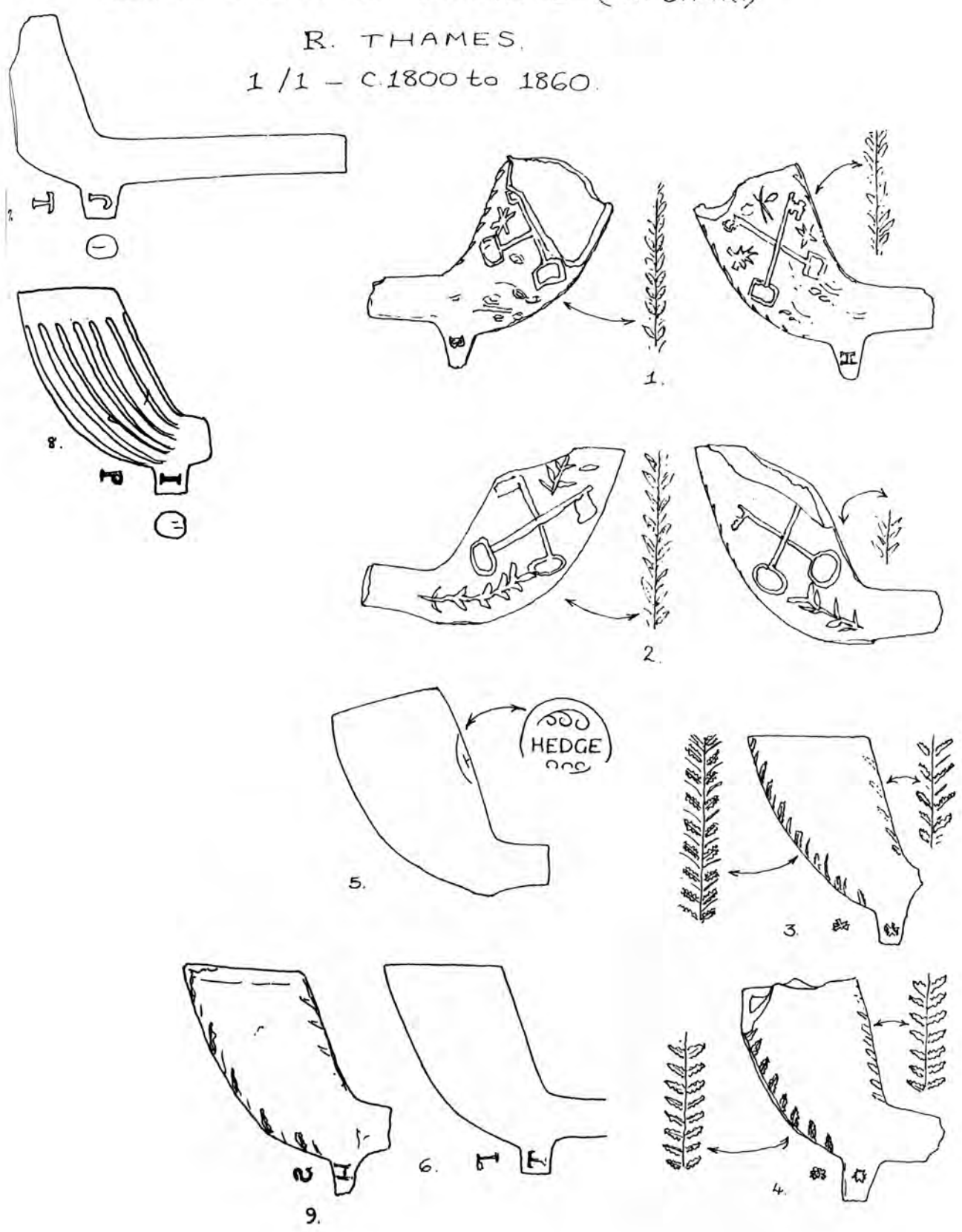


FIG. 2.

# BLACKFRIARS to DOWGATE (N. BANK)

R. THAMES.

1/1 - c1800 to 1860.

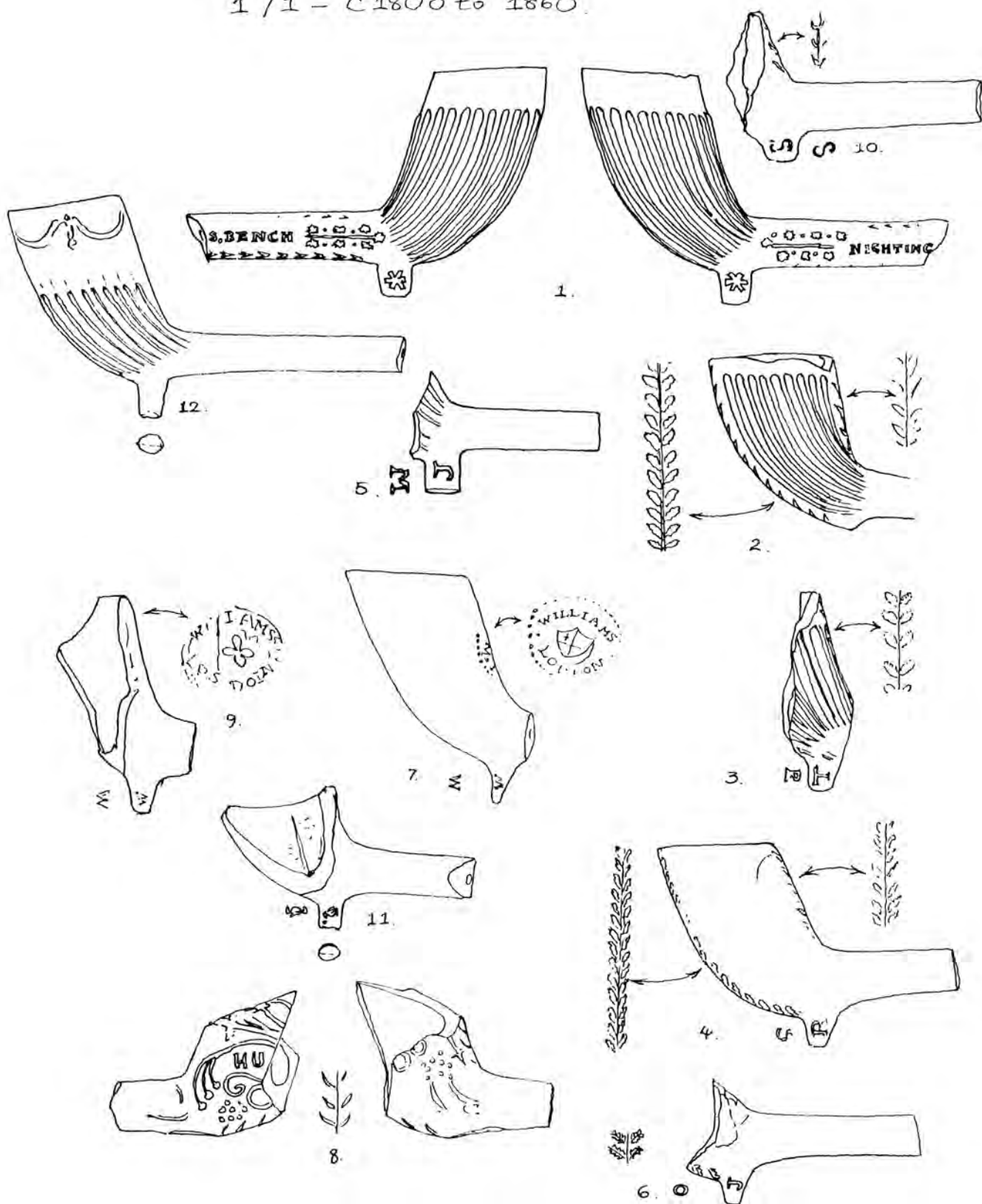


FIG 3.

FIG. 1.

1. (6. 10. 82.) BROOK'S WHARF.

C. 1832-50. L. TYPE 28. S.B.D. 1.6 MM. PIPE BY BALME (PAUL) WORKING 1832-66,  
MILE END WHARF. CLEAR, INCUSE STAMP, BACK OF BOWL. FRONT OF BOWL BROKEN.  
SPUR INITIALED P/B.

2. (10. 10. 82.) BROOK'S WHARF.

C. 1823-50. S.B.D. 1.6 MM. BADLY BATTERED FRAGMENT OF PIPE: BACK-STAMP  
REMAINING, NO SPUR, AND STEM STAMP OF WILLIAMS, INCUSE, LETTERING OBSCURE BUT  
POSSIBLY ONE OF THE TWO WILLIAMS MAKERS IN KENT ST., BOROUGH: - JOHN WILLIAMS,  
1828-42, OR (HIS BROTHER?) WILLIAM WILLIAMS, 1823-64.

3. (21. 11. 82.) BLACKFRIARS / PAUL'S WHARF.

C. 1820-30. L. TYPE 27. S.B.D. 1.6 MM. SPUR / STEM FRAGMENT OF FLUTED BOWL.  
MAKER I/F. PROBABLY FORD (JOHN). THERE WAS MORE THAN ONE JOHN FORD WORKING  
AROUND THIS TIME. BUT CF. WITH THE OTHER FLUTED BOWL OF FIG. 1, NO. 7. (WAPPING  
POLICE PIER... - MISCELLANEOUS.) THE MARKS ARE VERY SIMILAR. SO I WOULD  
ASSUME BOTH PIPES ARE MADE BY JOHN FORD, WHITE HORSE ST., STEPNEY.

4. (1982) BLACKFRIARS - SOUTHWARK BRIDGE.

C. 1820-30. L. TYPE 27. S.B.D. 2 MM. ANOTHER FLUTED BOWL FRAGMENT, MAKER W/S.  
SEVERAL POSSIBILITIES: WILLIAM SUTTON, 1836, RATCHIFFE; WILLIAM SWAN 1805 TP. CO.

FIG. 1.

5. (3. 12. 82.) SOUTHWARK BRIDGE.

C. 1820-30. S.B.D. 1.5 MM. DISCOLOURED, FLUTED BOWL. MAKER I/L.

POSSIBLY JOHN LEACH, 1805-39, HORSLEY DOWN; JAMES LEWIS, 1823-32, HORSLEY DOWN;  
OR JOHN LEACH, 1832, SHOREDITCH, AS A POSSIBILITY LESS FAVOURED.

6. (1982.) QUEENHITHE.

C. 1830 (TYPOLOGICAL DATE). S.B.D. 2 MM. WHITE CLAY; FLUTED BOWL, TOP BROKEN;  
CORN PATTERNS, BACK AND FRONT MOULD LINES. BRANCH PATTERN L.H.S. AND R.H.S OF STEM.  
BROKEN SPUR, MAKER H/S. POSSIBLY HENRY STRUTT, 1839, ROMFORD, 1854, STEPNEY,  
ALTHOUGH THE PIPE, IN FORM SEEMS EARLIER.

7. (13. 10. 82.) QUEENHITHE.

C. 1830 (TYPOLOGICAL DATE). S.B.D. 1.98 MM. STEM/SPUR FRAGMENT APPARENTLY FROM THE  
SAME MOULD AS NO. 6.

8. (16. 10. 82.)

C. 1820-30. S.B.D. 1.6 MM. FOLIATED STEM SPUR FRAGMENT. MAKER:

I/H. PROBABLY: JOHN HEDGES (1) 1811-21, GRAYS INN LANE, OR JOHN  
HURST, 1808-49, SMITHFIELD.

9. (3. 12. 82.) TRIG LANE STAIRS / BLACKFRIARS.

C. 1832-60. BACK STAMP (INCUSE) FROM PAUL BALME PIPE, WORKING 1832-66,  
MILE-END WHARF. Cf. FIG. 1. NO 1.

## FIG. 1.

10. (26.7.83.) TRIG LANE STAIRS / BLACKFRIARS.

C. 1820-30. L. TYPE 27. S.B.D. 1.85 MM. DISCOLOURED STEM/SPUR PIECE, MAKER: S/T. PROBABLY SAM TESTER, 1828, LITTLE GRAYS INN LANE.

11. (20.1.84.) QUEENHITHE.

C. 1800-20. L. TYPE 27. S.B.D. 1.9 MM. SMOOTH FABRIC, STEM STROKED. OVAL SPUR, TRACE OF MOULD LINE. WELL-DEFINED LETTERS I/B. MANY POSSIBLE MAKERS. PERHAPS ISAAC BICKHAM, 1781, 1784, 1812, BRISTOL POLLS, HANGING SWORD ALLEY, HOLBORN, BISHOPSGATE

12. (20.1.84.) QUEENHITHE.

C. 1800-30. L. TYPE 27. S.B.D. 1.85 MM. SLENDER BOWL FRAGMENT. CREAMY / FAWN FABRIC. OVAL SPUR, MOULD LINE. MAKER C/W. PERHAPS CHARLES WALFORD, 1828 TP.CO. PERHAPS LESS LIKELY, CHRISTOPHER WIGGLESWORTH, 1760. SPITAL SQ. HEALE, OR CHARLOTTE WADDINGTON, 1836. WALWORTH. D.

13. (9.9.83.) QUEENHITHE.

C. 1832-6. S.B.D. 2 MM. PORTION OF MOULDED STEM, HIGH RELIEF, SEAM-LEAVES 'Y? FLEET ST... / ... RISON CROW...'. OSWALD LISTS JAMES HARRISON, fl. 1832-6, HANGING SWORD ALLEY, JUST OFF FLEET ST. THIS EXAMPLE COULD HAVE GIVEN THAT ADDRESS, PLUS CROWN CRT., LISTED IN THE 1862 L.P.O.D. AS BEING 71 FLEET ST. E.C. WHETHER HARRISON WORKED OR MOVED TO OR FROM THESE DIFFERENT ADDRESSES, OR THEY ARE ONE AND THE SAME ADDRESS, IS NOT AT PRESENT CERTAIN. Cf. HARRISON BOWL STAMP, FIG. 14, NO. 8, 1840-1900+. THIS BOWL TYPE IS COMMON TO THE DECADES AFTER THE 1840's. (CHARING X TO SOUTHWARK BDE. S. BANK).

14. (21.8.84.)

C. 1830-60. S.B.D. 1.6 MM. SHINY, LIGHT MUSHROOM / BUFF FABRIC - DARK STAINING; NARROW SPUR WITH MOULD LINE; MAKER: I/N. PERHAPS JAMES NEEDHAM, 1832. FRIAR ST.

## FIG 2.

## 1. (8.11.82) BROOK'S WHARF.

C. 1830-50. L. TYPE 28. S.B.D. 1.6 MM. BOWL BROKEN FRONT/R.H.S. BUFF/FAWN CLAY.

CROSS-KEYS MOTIF L.H.S./R.H.S. INDISTINCT BRANCH AND STAR PATTERNS. UPRIGHT, POINTED

SPUR. MAKER: H/B. POSSIBLY MRS. H. BISHOP, OLD ST., 1840-8.

## 2. (16.10.82) BROOK'S WHARF.

C. 1810-40. L. TYPE 28. S.B.D. 1.6 MM. WHITISH CLAY. TOP/BACK OF BOWL BROKEN.

SPUR BROKEN. CROSS-KEYS AND BRANCHES L.H.S./R.H.S. CORN PATTERNS FRONT AND BACK

MOULD-LINES.

## 3. (31.1.83) QUEENHITHE.

C. 1830-60. L. TYPE 28. S.B.D. 1.75 MM. WELL-SMOKED BOWL; CREAMY/BUFF CLAY; CORN

PATTERN FRONT AND BACK MOULD. STAR MOTIFS ON SPUR.

## 4. (3.12.82) QUEENHITHE.

C. 1820-40. L. TYPE 28. S.B.D. 1.75 MM. SIMILAR TO NO. 3, BUT LARGER WITH

STRIKING CORN DECORATION FRONT AND BACK MOULD-LINES AND THE TWO HALVES OF

THE MOULD OFF-KEY SHOWING FLASH. SIMILAR STARS TO NO. 3, THOUGH SMALLER.

## 5. (7.10.83) PAUL'S WHARF.

C. 1840-60. S.B.D. 1.9 MM. SMOOTH, FORWARD SLOPING BOWL, BLACKENED

AROUND LIP, WITH SPUR BROKEN. BACKSTAMP OF 'HEDGE' WITHIN SCROLL SHAPES AND

CIRCLE. PRESUMABLY THE SIMILARITY TO 'HEDGES' IS COINCIDENTAL. AN UNRECORDED MAKER.

## FIG. 2.

6. (13.6.84) PAUL'S WHARF.

C. 1820-30. L. TYPE 27. S.B.D. 1.6 MM. WELL-PROPORTIONED PIPE, MEDIUM-THICK BOWL, IRON STAINED L.H.S; BLACK STAINING R.H.S; CIRCULAR STEM BREAK, CENTRAL STEM BORE; CYLINDRICAL SPUR - CENTRAL SEAM LINE EVIDENT. MAKER: T/L. PERHAPS THOMAS LEACH, 1828, HORSLEY DOWN. D. 1858-67. WHITECHAPEL RD.; THOMAS LEWIS, 1823-34 HORSLEY DOWN (OSWALD / G.H.R.O.), 1860-4, BERMONDSY.

7. (24.2.85.) PAUL'S WHARF.

C. 1800-30. L. TYPE 27. S.B.D. 1.99 MM. CREAMY CLAY; ROUND STEM-BREAK - CENTRAL BORE; CYLINDRICAL SPUR; MAKER J/T. JAMES (JOSEPH) TESTER, 1805-28, T.P. CO.

8. (MAY, 1987) TRIANGLE STAIRS AREA.

C. 1810-40. L. TYPE 27. S.B.D. 1.8 MM. SMOKED LIP; SOME IRON STAINS. I/P MAKER. SEVERAL POSSIBLES.

9. (14.9.1987)

C. 1820-60. S.B.D. 2 MM. SMOKED; CORN EARS ON SEAMS; H/R ON SPUR. S RETROGRADE. A NUMBER OF POSSIBLES.



FIG 3.

1. (3. 12. 82.) BLACKFRIARS.

C. 1820-30. L. TYPE 27. S. B. D. 1.6 MM. FLUTED BOWL - BLANK MARGIN ROUND LIP.  
OVAL SPUR WITH MOULD-LINE. ON STEM - L. H. S., MOTIF WITH STARS, PELLETS AND LINE AND  
'NIGHTING...' POSSIBLY NIGHTINGALE, THE NAME OF A ROAD. ON STEM - R. H. S., 'S. BENCH'  
AND STAR AND PELLET MOTIF. BOTH SIDES OF THE STEM HAVE ON THEM LINES OF TRI-POINTED  
PARTS. THERE ARE TWO STARS ON THE SPUR. OSWALD DOES NOT CITE THIS NAME.

2. (8. 11. 82.) QUEENHITHE.

C. 1830-60. S. B. D. 1.95 MM. WELL-SMOKED, FLUTED BOWL WITH OAK LEAF DESIGN  
FRONT AND BACK MOULD-LINES. SPUR MISSING.

3. (16. 11. 82.) QUEENHITHE.

C 1840-50. S. B. D. 1.6 MM. FLUTED BOWL - FRAGMENT; SIMPLE CORN OR LEAF  
DESIGN - BACK MOULD-LINE. BLUNTED SPUR, LETTERED T/P. POSSIBLY THOMAS PARR, 1839-52,  
MILE END.

4. (7. 6. 83.) TRIG LANE STAIRS.

C. 1830-60. S. B. D. 1.75 MM. BOWL DECORATED ON SEAMS WITH OAK  
LEAVES. WHITE CLAY, DISCOLOURED, L. H. S. FORWARD POINTING SPUR WITH MOULD.  
LINE. MAKER R/S. POSSIBLY RICHARD SIMMONDS 1805. TP. CO.

5. (15. 7. 83.) TRIG LANE STAIRS/BLACKFRIARS.

C. 1800-20. L. TYPE 27. S. B. D. 1.98. FRAGMENT OF REEDED BOWL. MAKER J/M.  
POSSIBLY JAMES MINTO 1809-11, TOOLEY ST.; JAMES MOULD, 1802-4, HOLBORN.

## FIG. 3.

(JUNE/JULY, 1984.)

C. 1825-50. L. TYPE 28. S.B.D. 1.75 MM. ROUND STEM BREAK, SOME IRON STAINS LEAVES, FRONT AND BACK SEAMS. MAKER: J/O. LIKELY JOHN ONGAR, 1828 T.P. CO.

7. (2.7.85.) PAUL'S WHARF.

C. 1825-60. L. TYPE 28. S.B.D. 1.5 MM. THIN, GRIMED BOWL; OVAL STEM-BREAK WITH CENTRAL BORE; W/W ON SPUR; 'WILLIAMS / LONDON' INCISED ON BACK WITH CITY SHIELD: WILLIAM WILLIAMS, 1823-64, KENT ST. BOROUGH D.

8. (24.7.85.) QUEENHITHE DOCK.

C. 1830-50. S.B.D. 2.1 MM. WHITE, THICKISH BOWL; OVAL STEM-BREAK; STEM BORE CLOSE TO EDGE OF STEM; RELIEF DESIGN OF GRAPES AND FRONDS; 'HU[LL]' R.H.S. IN SANSERIF LETTERS (SO POSSIBLY DATING THIS PIPE 1835+) LIKELY ATTRIBUTION: JOHN HIRST PI. 1831 AND 1867. Cf. BAR 63, NO. 16.

9. (24.8.1986).

C. 1823-64. S.B.D. 1.75 MM. PLUNGER-'SCARED' CAVITY BASE; BLURRED 'WILLIAMS / LONDON' STAMP ON BACK, FLEURON IN CENTRE; W/W ON SPUR. Cf. NO. 7. EITHER WILLIAM WILLIAMS (1) OR (2). SEE NOTES ON THE TOBACCO PIPEMAKERS OF ST. MARY'S NEWINGTON LAMBETH (C.A.T.).

10. (24.8.1986).

C. 1830+ S.B.D. 1.6 MM. 'STUMPY' SPUR; OVAL STEM BREAK, CENTRAL BORE; S/S MAKER. UNCERTAIN.

11. (24.8.1986.) PAUL'S WHARF.

S.B.D. 1.9 MM. PLUNGER 'SCARS' IN CAVITY; ROUND STEM-BREAK; CURIOUS MARKS ON SPUR: BIRD IN RELIEF L.H.S. ALSO WITH A 'PELLET'? NO COMPARISON CAN BE FOUND. PERHAPS 1ST HALF OF 19TH C.

12. (6.1.1987) PUDDLE DOCK.

C. 1810-40. S.B.D. 1.8 MM. BLACKENED LIP; DISCOLOURED CLAY; FINE REEDS ON BOWL; SWAG DECORATION AROUND RIM OF BOWL. NO MAKERS MARKS; OVAL BOWL.

BLACKFRIARS to DOWGATE (N. BANK.)

R. THAMES.

1/1 - C.1840 to 1900+

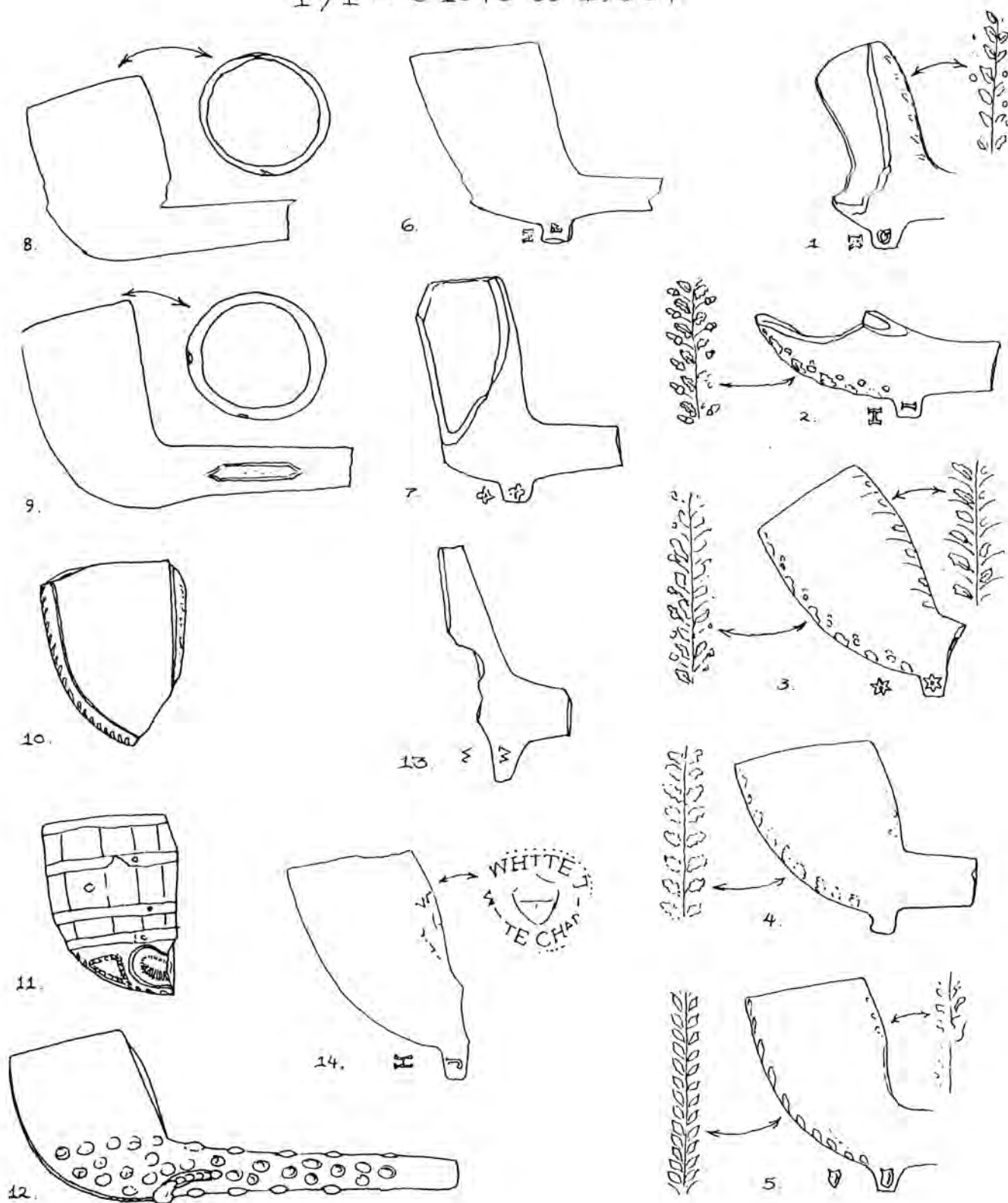


FIG. 1.

BLACKFRIARS to DOWGATE. (N. BANK.)

R. THAMES.

1/1 - c.1840 to 1900+.

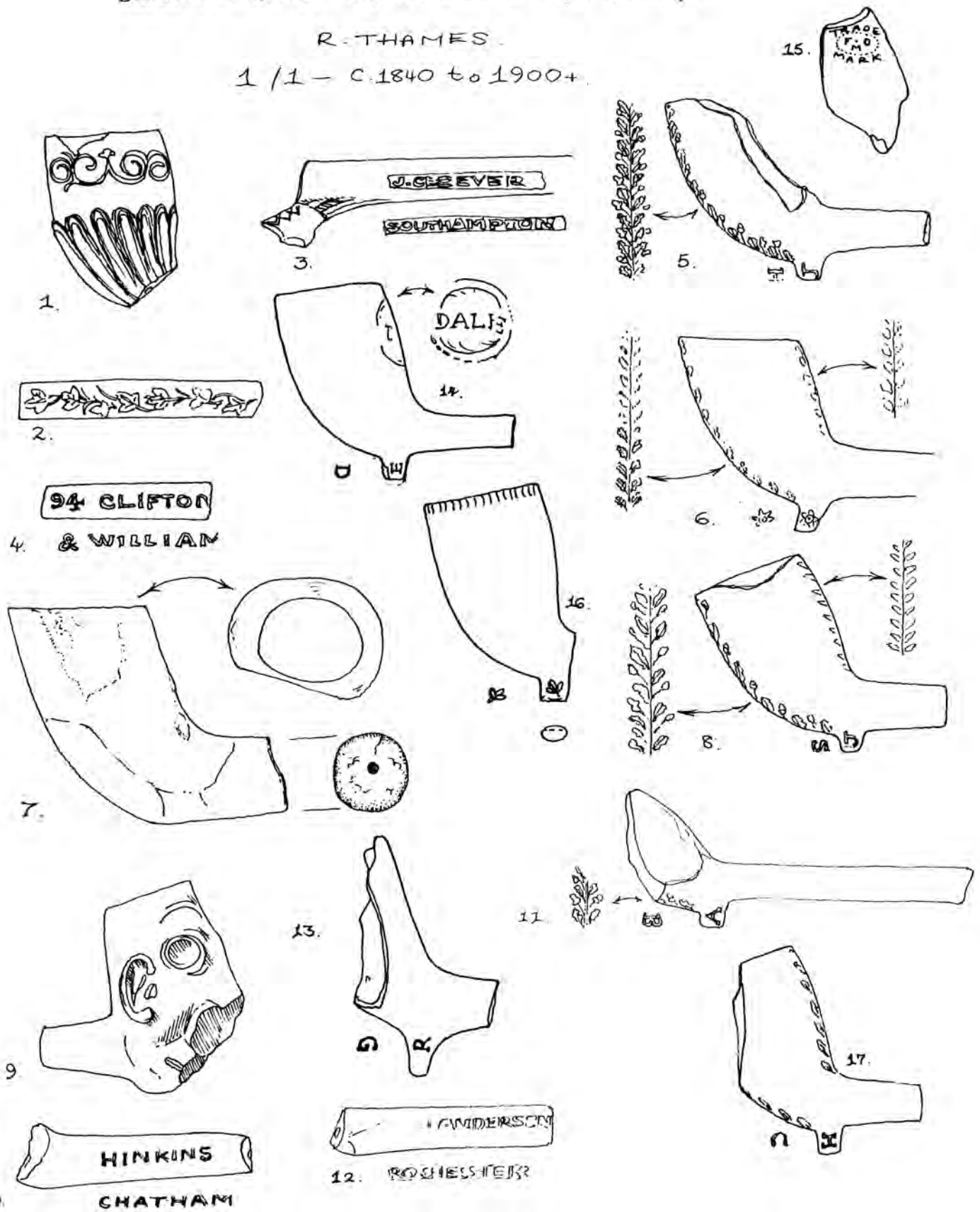
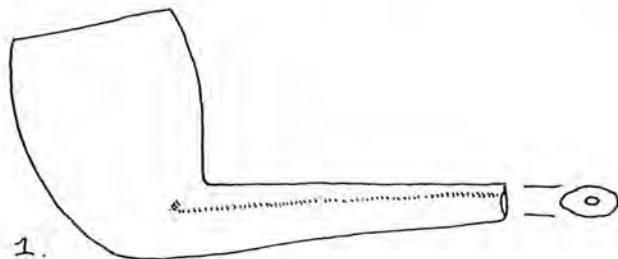


FIG. 2.

BLACKFRIARS to DOWGATE (N. BANK.)

R. THAMES.

1/1 - C. 1840 to 1900+



MSCUTTY

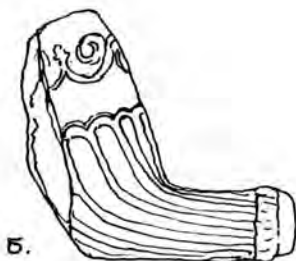
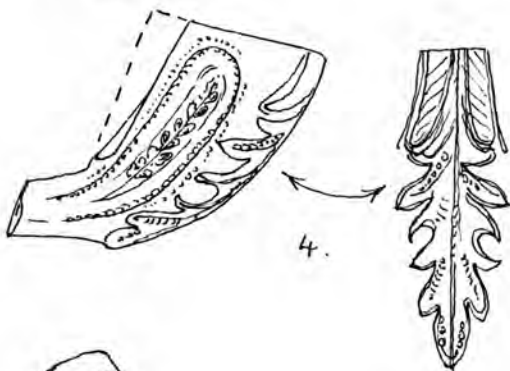
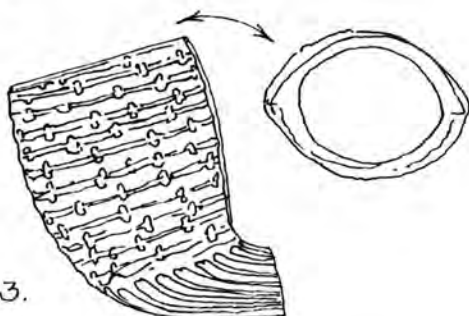


FIG. 3.

BLACKFRIARS to DOWGATE (N. BANK).  
R. THAMES  
1/1.-C. 1840-1900+



1.



## FIG. 1.

## 1. (1982).

C. 1840-80. L. TYPE 29. S.B.D. 1.9 MM. BOWL-FRONT BROKEN. CLAY DISCOLOURED WITH GREY/BLUE BLOTCHES. OAK LEAF AND AORN DESIGN BACK MOULD-LINE.

MAKER: G/K, OR POSSIBLY G/R. BUT PROBABLY GEORGE KENT, 1852-3, BLACKFRIARS.

## 2. (1982).

C. 1840-80. L. TYPE 29. S.B.D. 1.75 MM. BOTTOM PART OF FORWARD-SLOPING BOWL DECORATED WITH OAK LEAF AND ACORNS ON FRONT MOULD-LINE. MAKER: I/H.

A NUMBER OF POSSIBILITIES.

## 3. (3.12.82.) PAUL'S WHARF.

C. 1840-80. L. TYPE 29. S.B.D. 1.6 MM. ANOTHER TYPICAL TYPE 29 SHAPE. OAK LEAF AND AORN PATTERN FRONT AND BACK. WELL-SMOKED. SIX-POINTED STAR SHAPES ON SPUR. PIPES WITH SIMILAR MOTIFS FOUND ON SOUTH BANK.

## 4. (3.12.82.) QUEENHITHE.

C. 1840-80. L. TYPE 29. S.B.D. 1.85 MM. SHALL, BULBOUS BOWL WITH A 'CLUBBED' SPUR, NO MAKER'S INITIALS, AND AN INDISTINCT OAK LEAF PATTERN FRONT AND BACK MOULD-LINES.

## 5 (3.12.82.) QUEENHITHE.

C. 1840-80. L. TYPE 29. S.B.D. 1.55 MM. WELL-SMOKED, FORWARD-POINTING BOWL WITH CONCAVE LOWER-BACK OF BOWL POSSIBLY DUE TO MIS-HANDLING WHILST IN SOFT STATE. PINCHED L.H.S. LOWER BOWL. SPUR WITH SHIELD MARKS.

## FIG. 1.

G. (3. 12. 82.) PAUL'S WHARF.

C. 1870+ L. TYPE 33. S.B.D. 1.5 MM. THICKISH, DISCOLOURED AND IRON-STAINED BOWL; FRONT OF BOWL BADLY WORKED AND GROOVED. ROUND, SMALL, UPRIGHT SPUR. MAKER R/H? POSSIBLY: ROBERT HOVEDON AND SONS, 1854-99, CITY RD; OR ROBERT HOWARD, 1888-99, TABARD ST. SOME ROULETTING AROUND BACK OF BOWL.

T. (16. 11. 82.)

C. 1850+ S.B.D. 1.8 MM. BACK, SPUR AND STEM PIECE OF FAIRLY WELL-SMOKED PIPE, WITH FINE ROULETTING ROUND LIP AND THE UBIQUITOUS FOUR-PETALED MOTIF ON SPUR.

B. (13. 10. 82.) QUEENHITHE.

C. 1860+ L. TYPE 30. S.B.D. 1.6 MM. THINNISH, OVAL, SPUR-LESS PIPE. SMOKE-STAINS, BACK OF CAVITY. ROUNDISH STEM CROSS-SECTION WITH CENTRAL BORE HOLE.

9. (10. 10. 82.) BLACKFRIARS.

C. 1860+ L. TYPE 30. S.B.D. 1.98 MM. THICKISH, WELL-SMOKED PIPE WITH STEM CARTOUCHES, UNFORTUNATELY WITH UNREADABLE LETTERING.

10. (6. 10. 82.) QUEENHITHE.

C. 1860+ L. TYPE 30. S.B.D. 2 MM. CUTTY BOWL WITH UNEVEN LIP. LEAF PATTERN ON FINS. BASE PART BROKEN OFF.



## FIG. 1.

## 11. (24.9.82.) QUEENHITHE.

C. 1860+. L. TYPE 30. S.B.D. 1.8 MM. BOWN DESIGNED LIKE A BARREL.

TRIANGULAR MARKINGS ON BASE SIMILAR TO THOSE FOUND ON SOME BASKET-WEAVE PIPES. Cf. SHIRE ALBUM 37, AYTQ, P. 12.

## 12. (8.11.82.) QUEENHITHE.

C. 1860+. L. TYPE 30. S.B.D. 1.75 MM. PROBABLY FROM THE SAME MOULD AS

FIG. 14, NO. 3, CHARING CROSS / SOUTHWARK BRIDGE. IN THIS EXAMPLE SOME OF THE MOUNDS ARE FRACTURED, OTHERS ARE SPLIT BY FISSURES MAKING THESE RESEMBLE LOWRIE SHELLS. PROBABLY THE LIKENESS IS UNINTENTIONAL! PIPE FAIRLY CLEAN AND WHITE.

## 13. (5.5.84.) PAUL'S WHARF / TRIGLANE STAIRS.

C. 1840-60. L. TYPE 28. S.B.D. 1.5 MM. BOWN FRAGMENT OF SMOOTH, SHINY, IRON STAINED SURFACE. OVAL SPUR BREAK WITH CENTRAL BORE. BROKEN, FORWARD SLOPING SPUR. MAKER W/W. A NUMBER OF POSSIBLE MAKERS, PERHAPS WILLIAM WALKER, 1837-60, SPITALFIELDS, D. Cf. W/W PIPES FROM CHARINGCROSS RAIL BRIDGE / SOUTHWARK BRIDGE WHICH ARE POSSIBLY THE WORK OF WILLIAM WILLIAMS, 1823-64, KENT ST. BOROUGH, D.

## 14. (21.3.85.) QUEENHITHE.

C. 1840-70. L. TYPE 29. S.B.D. 1.9 MM. OFF-WHITE; SMOKED; EGG-SHAPED MEDIUM-THIN LIP; J/H ON SPUR; 'WHITE/WHITECHAPEL' INCUSE ON BACK WITH CITY SHIELD. PERHAPS THE MOULD FIRST BELONGED TO JOHN HOBBS, 1828-58. ST. GEORGES IN EAST. D. TP.CO, THEN HENRY WHITE TOOK IT OVER, FI. 1859-62, NEW RD. ST. GEORGES. SO THE STAMP PROBABLY DATES C. 1860 WHILE THE MOULD MAY PRECEED THIS BY TEN YEARS.

FIG. 2.

1. (17.12.82) BROKEN WHARF.

C. 1860+ L. TYPE 30. S.B.D. (DISFIGURED BORE HOLE.) SMALL CUTTY BOWL WITH SCROLL DECORATION AROUND RIM AND SCALLOPED DESIGN ON BOTTOM HALF. SIMILAR FROM NOTTINGHAM AND WARWICK: (SEE BAR 100, P. 67, NO. 144 AND BAR 63, P. 291, NO. 40.) ALSO Cf. SHIRE ALBUM 37, AYT0, P. 12.

2. (6.10.82) BLACKFRIARS.

C. 1840+. S.B.D. 1.8 MM. STEM FRAGMENT WITH LEAFY DECORATION. POSSIBLY VINE LEAVES.

3. (20.9.83)

C. 1867-95 S.B.D. 2 MM. STEM PIECE WITH BROKEN SHOES SPUR. MAKER'S NAME, 'J. CLEEVER, SOUTHAMPTON', IN SANS-SERIF, INCUSE LETTERS UPON RAISED CARTOUCHES: JOSEPH CLEEVER, 1867-95.

4. (16.11.82)

C. 1860+. S.B.D. 2 MM. STEM FRAGMENT WITH 'Q WILLIAMS, 94, CLIFTON' IN INCUSE LETTERS: GROUT AND WILLIAMS, C. 1860, 94, CLIFTON ST, EC2.

5. (26.4.83) PAUL'S WHARF.

C. 1840-80. L. TYPE 29. S.B.D. 1.8 MM. BOWL WITH BACK MISSING. OAK LEAF AND ACORN PATTERN ON FRONT SEAM LINE. SMALL CYLINDRICAL SPUR. MAKER: J/H. A NUMBER OF POSSIBILITIES.



FIG. 2.

6. (26. 4. 82). QUEENHITHE.

C. 1840. S.B.D. 1.8 MM. CREAMY/BUFF PIPE, OVAL, THICK/MEDIUM BOWL, OAK LEAF PATTERNS ON SEAMS (BLURRED BACK). CURIOUSLY FORWARD-POINTING SPUR WITH FLATTENED BASE (NO MOULD-LINE HERE) STAR SYMBOLS ON SPUR SIDES.

7. (31. 1. 83.) QUEENHITHE.

C. 1850+. S.B.D. 1.98 MM. LARGE, THICK BRIAR TYPE PIPE, CREAMY, BLACKENED CLAY, THICK, ROUND STEM. TYPE MADE BY SOUTHORNS OF BROSELEY Cf. AYTO, SHIRE 37, P. 23. BOWL PIECES RESTORED WITH P.V.A.

8. (15. 7. 83.) TRIG LANE STAIRS.

C. 1840-80. L. TYPE 29. S.B.D. 1.1 MM. IRON STAINED AND DISCOLOURED, FORWARD SLOPING BOWL, L.H.S. LIP CHIPPED, OAK LEAF AND ACORN DESIGN ON FRONT SEAM, LEAVES ON BACK SEAM. SMALL, ROUND SPUR. MAKER J/S. A NUMBER OF POSSIBLE MAKERS.

9. (26. 7. 83.) PAUL'S WHARF / TRIG LANE STAIRS.

C. 1900. S.B.D. 2 MM. BROKEN BOWL DEPICTING ALLY SLOPER THE COMEDIAN. NOSE BROKEN OFF.

10. (NOVEMBER 1984). PAUL'S WHARF.

C. 1850-80. S.B.D. 2 MM. STEM FROM A PROBABLE L30.; HINKINS/CHATHAM. OSWALD LIST'S THIS MAKER AS WORKING C. 1850.

11. (2. 7. 85.) QUEENHITHE.

C. 1840-80. L. TYPE 29. S.B.D. 2 MM. ACORN & OAK LEAVES ON FRONT SEAM; ROUND STEM-BREAK; A/B MAKER. A NUMBER OF POSSIBLE MAKERS.

12. (31. 1. 1987)

C. 1850+ S.B.D. 2 MM. IRON STAINED FRAGMENT, BLURRED, INCUSE LETTERING: [?] 'ANDERSON' / 'ROCHESTER'. JOSEPH ANDERSON 1839-51, ROCHESTER; R. ANDERSON C. 1850. ROCHESTER (OS. 1975). PERHAPS WORKING LATER.



## FIG. 2.

13. (AUG. 1987)

C. 1840-60. S.B.D. 2 MM. OVAL STEM BREAK. WHITISH CLAY. R/Q MAKER. PERHAPS ROBERT GARDNER 1823. 9T. WINDMILL ST. (OS. 1975). SEE BAR 97, P. 147 FOR ANOTHER R/Q PIPE.

14. (AUG. 1987) QUEENHITHE DOCK.

C. 1860+. L. TYPE 29. S.B.D. 1.5 MM. THIN, SMOKED BOWL; BACKSTAMP OF 'DALE' WITHIN FOLIATED CIRCLE; E/D ON SPUR. SIMILAR FROM S. BANK (WATFORD). SEE ALSO '19<sup>TH</sup> C. MARKED PIPES FROM MAVERTON RD. BOW, E. LONDON FIG. 3.

15. (14. 9. 1987) QUEENHITHE DOCK.

C. POST 1870. F.C?M INCISE WITHIN PERFORATED ELLIPSE. 'TRADE MARK' SURROUND. Cf. BAR 146, i, 1985 P. 128, NO. 96. FREDERICK CHAPPLE 1890-1 PALL MALL.D. (OS. 1975) IS ONE POSSIBLE. 'M' POSSIBLY STANDING FOR MANUFACTURER.

16. (24. 12. 1987)

C. 1870+ S.B.D. 1.75 MM. SMOKED, THICK BOWL; DISCOLOURED; LEAF MOTIF ON SPUR.

17. (23. 1. 1989) QUEENHITHE DOCK.

C. 1840-70. S.B.D. 1.6 MM. OVAL STEM BREAK. H/C MAKER. POSSIBLY LETTERS BELOW. A NUMBER OF POSSIBLES.

## FIG. 3.

## 1. (9.8.83.) QUEENHITHE.

C. 1880+ L-TYPE 30. S.B.D. 2.1 MM. DISCOLOURED CUTTY PIPE, ROUND BOWL, EVEN IN SECTION, FLATTENED STEM.

## 2. (9.8.83.) QUEENHITHE.

C. 1861-1904. L-TYPE 30. S.B.D. 1.8 MM. CUTTY STEM PIECE WITH INCUSE: BURNS CUTTY.

## 3. (7.10.83.) PAUL'S WHARF.

C. 1870+. L-TYPE 30. S.B.D. 2.3 MM. NARROW, THICK, BASKET-WEAVE BOWL WITH REEDED BASAL SECTION. SEAM LINES ARE OFF-KEY, LIKELY FROM A WORN MOULD.

## 4. (20.1.84.) QUEENHITHE.

C. 1860+. L-TYPE 30. S.B.D. 1.6 MM. BACK OF BOWL MISSING. BOWL AXIS SLOPES FORWARD. INTRICATE FLORAL AND LEAF DESIGN.

## 5. (10.8.84.) QUEENHITHE

C. 1860+ L-TYPE 30. S.B.D. 2 MM. SMOKED CUTTY WITH SCROLL MouldING AND OUTLINED FLUTES; RING COLLAR NEAR STEM BREAK. Cf FIG. 2 NO. 1, WHICH IS IDENTICAL, THOUGH LESS STEM REMAINING.

FIG. 4.

## 1. (18.4.85.) QUEENHITHE.

C. 1860+ L. TYPE 30. S.B.D. 1.5 mm. FORWARD-SLOPING, OFF-WHITE CUTTY BOWL; DECORATED WITH THE ANCIENT ORDER OF FORESTERS (FORMED 1834) EMBLEMS. IT IS BELIEVED LONDON BRANCH BEGAN IN 1837. THERE WAS A BURST OF EXPANSION IN 1856, ESPECIALLY AMONG AGRICULTURAL LABOURERS, TERMS BETTER SUITED TO THEIR POCKETS THAN RIVAL SOCIETIES. MAIN STRENGTH WAS IN LANCASHIRE AND YORKSHIRE TO BEGIN WITH, BUT AT THE TIME OF THIS PIPES MAKING IT PROBABLY HAD BECOME POPULAR NATIONWIDE. L.H.S.: STANDING MAN WITH LONG BOW, WEARING TUNIC AND FEATHERED CAP; SEATED DOG BELOW; R.H.S.: DEMI-STAG WITHIN CROWN; EVER SEEING EYE ABOVE; SIMILAR FROM WATERLOO. (1840-1900+ VOL. I, FIG. 27. NO 2).