



THE NATIONAL PIPE ARCHIVE

Registered Charity Number 1043065

Accession Number: LIVNP 1998.09.01 (part 1)

Description: Part 1 of Vol. 1 of Colin Tatman's unpublished notes and drawings of pipes and hair curlers (Vol. 4) recovered from sites in London and Kent, pages 1 to 71.

Comments: For each figure there is a caption which includes the date and site of recovery; the date of the pipe (or hair curler – Vol. 4) followed by a description. The figures are grouped by find spot and then illustrated in chronological order. This is the first part of Volume 1 which covers three groups of pipes recovered from Blackfriars to Dowgate (N. Bank), R. Thames; the first group dated c1580-1660; the second group dated c1640-1680; the third group dated c1680-1710. There are 4 volumes in total.

Key Words: Clay Pipes; London; Blackfriars; Dowgate; River Thames; Thames foreshore; Queenhithe; Vintry Wharf; Southwark; Trig Lane Stairs.

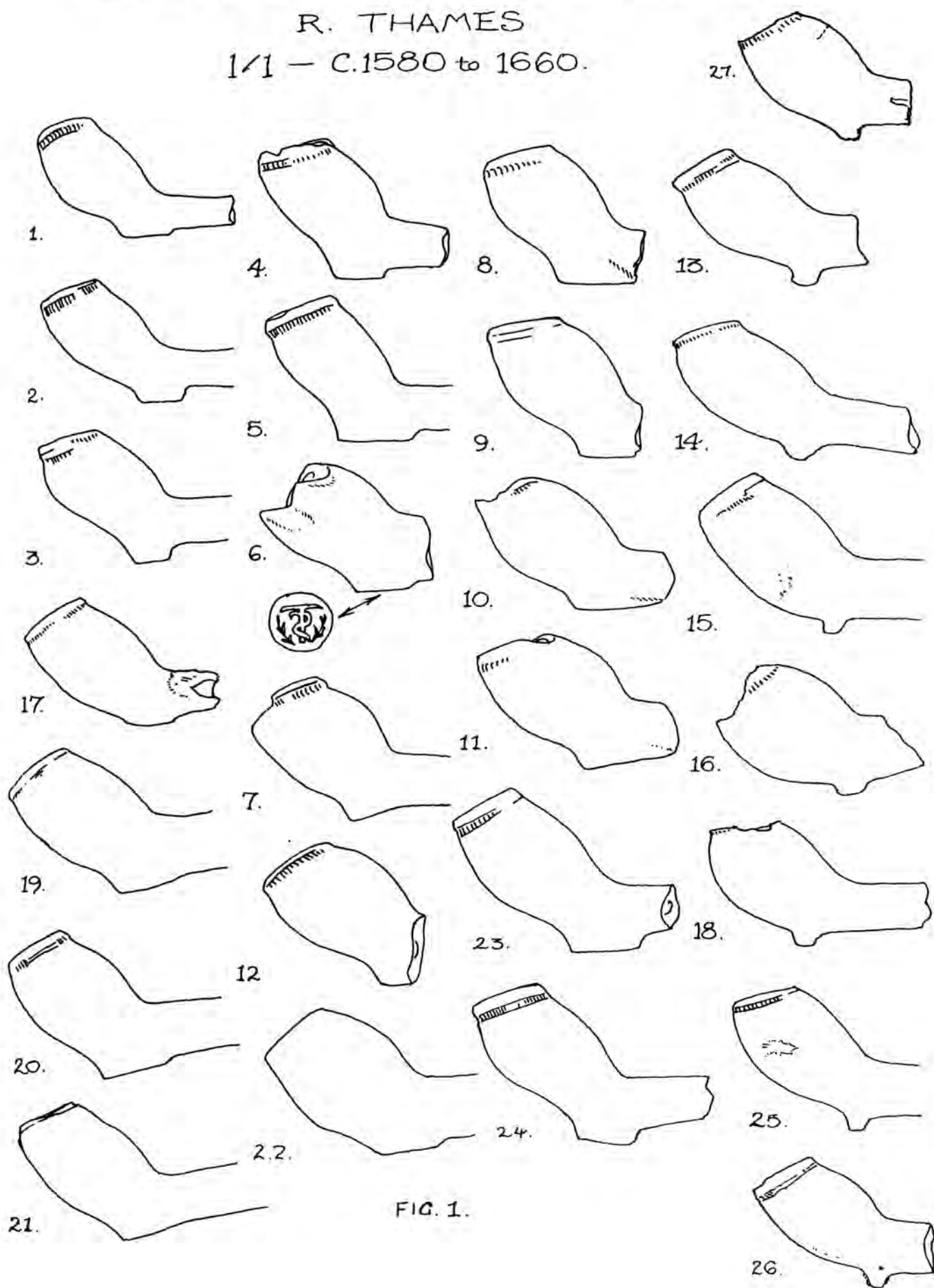
Scanned: PDF 7 December 2016

Any images in this PDF must not be lent, copied to another party, sold or reproduced in any way without prior permission from the National Pipe Archive and the copyright owner, if applicable. Reproduction or publication in any medium is expressly forbidden without written authorisation and should include an acknowledgement worded 'Courtesy of the National Pipe Archive' and quoting the relevant accession number.

BLACKFRIARS to DOWGATE (N.BANK)

R. THAMES

1/1 - C.1580 to 1660.



0

5cm

© National Pipe Archive

BLACKFRIARS to DOWGATE. (N. BANK.)

R. THAMES.

1/1 - C.1580 to 1660.

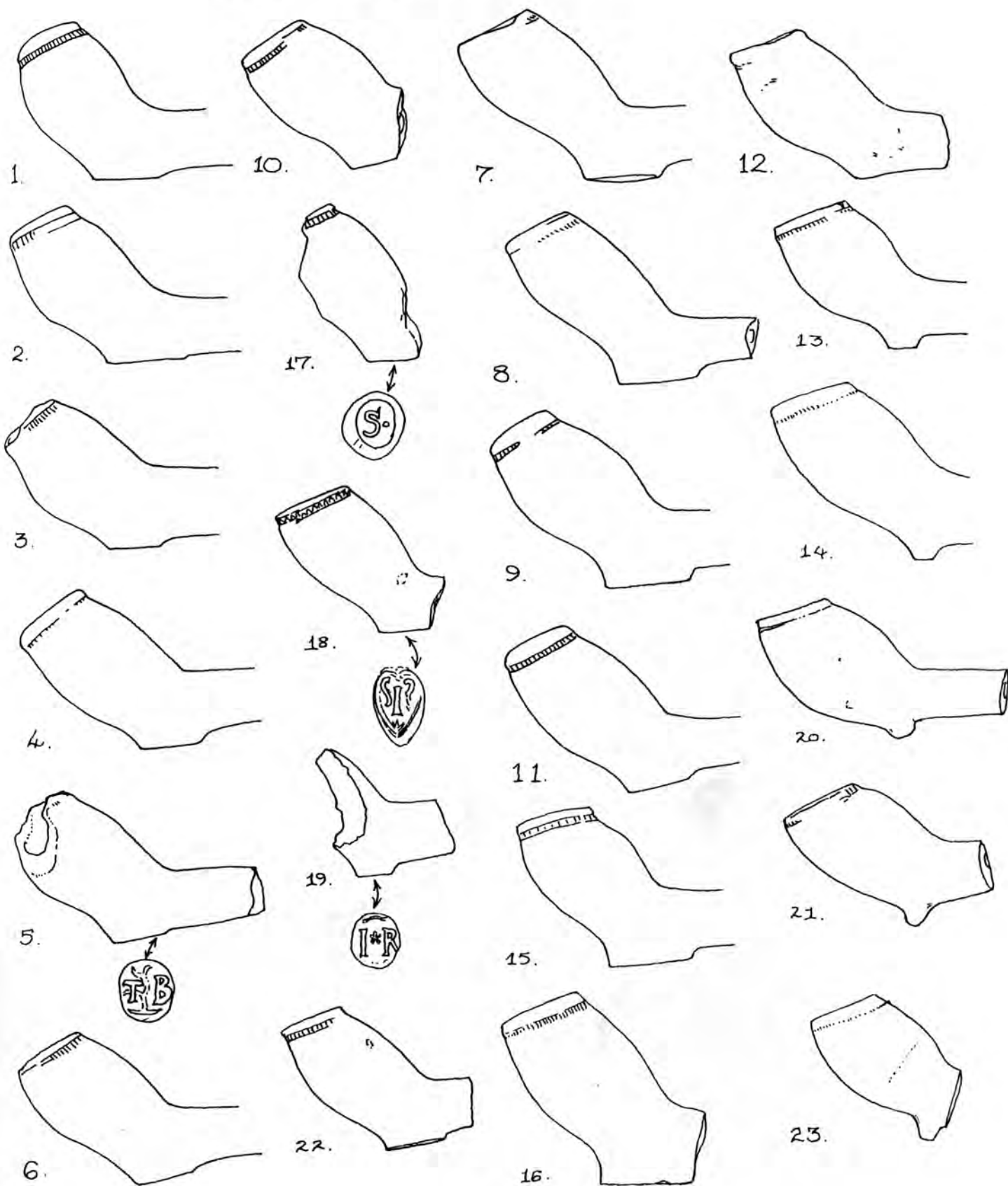


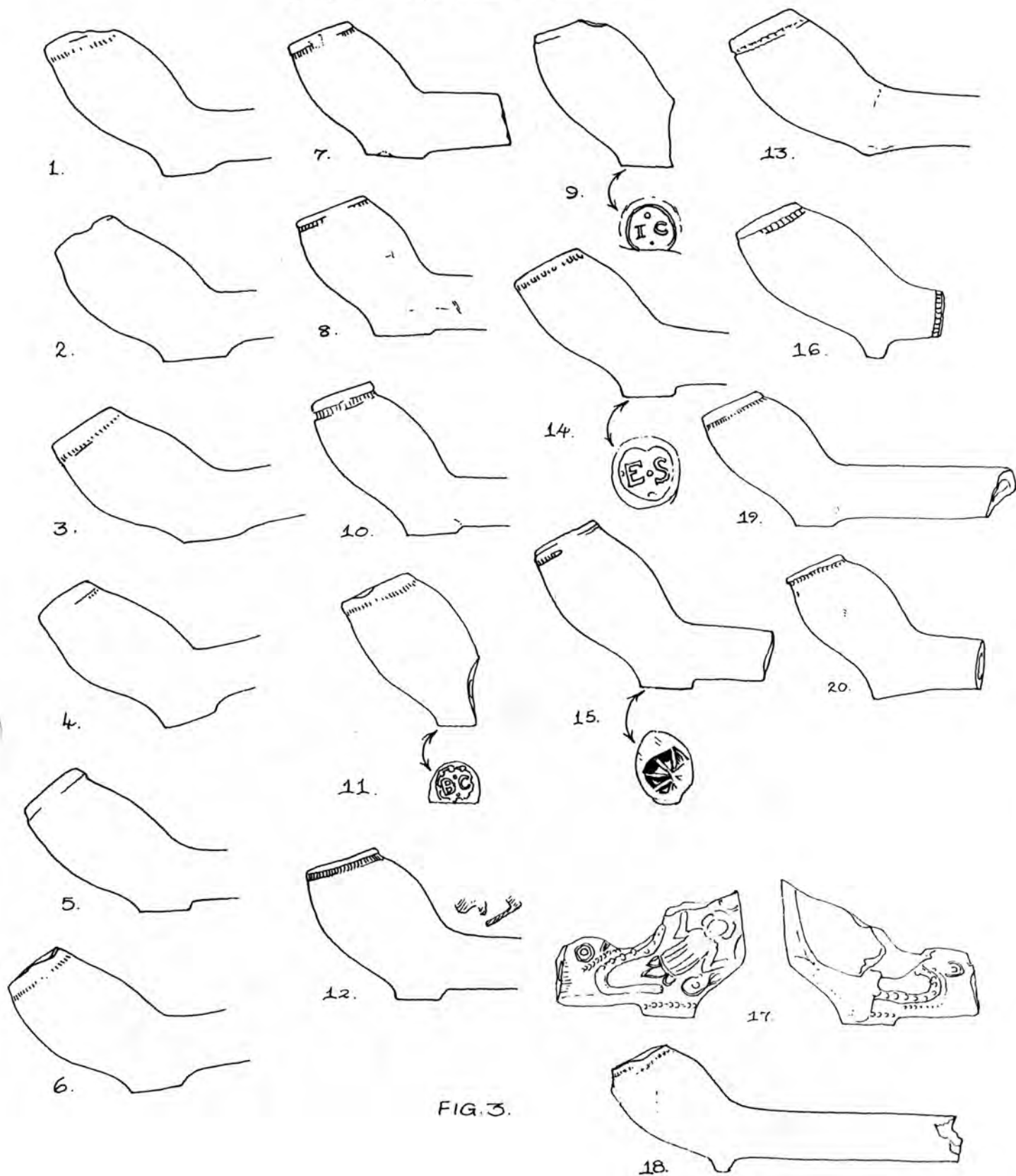
FIG 2.

0 5cm

BLACKFRIARS to DOWGATE (N.BANK)

R. THAMES

1/1 - c.1580 to 1660.



0 5cm

BLACKFRIARS to DOWGATE (N. BANK.)

R. THAMES.

1/1 - c.1580 to 1660.

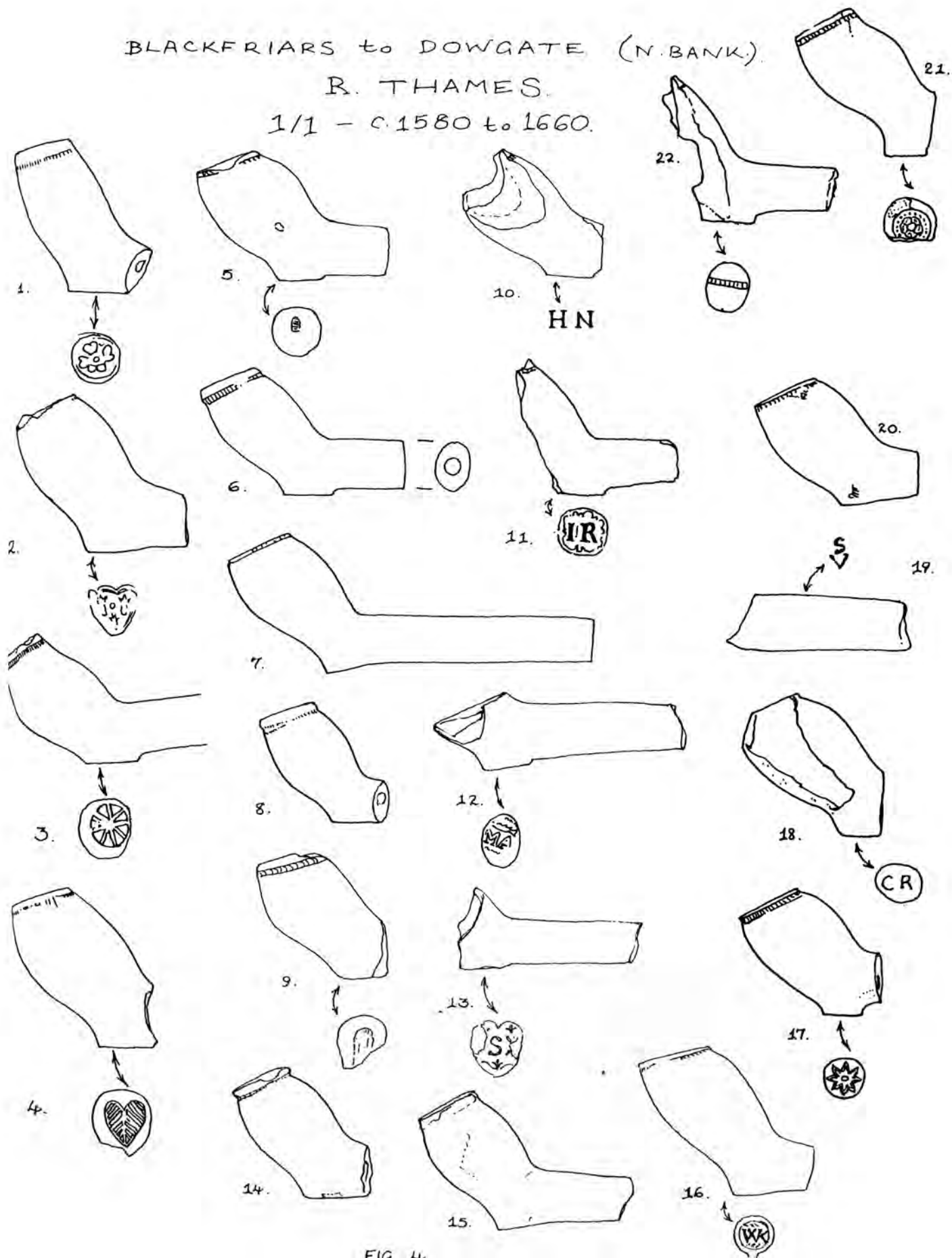


FIG. 4.

0 5cm

BLACKFRIARS to DOWGATE (N.BANK.)

R. THAMES.

1/1 - c.1580 to 1660.

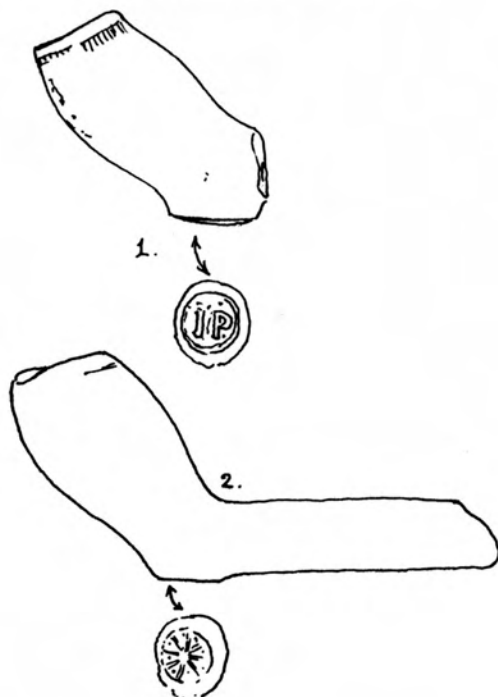


FIG. 5.

FIG. 1.

1. (3.10.82)

C. 1620-40. L. TYPE 5. S.B.D. 2.75 MM. POLISHED. ROULETTING BAND ROUND LIP. LIP SLIGHTLY CHIPPED - BACK OF BOWL. FOOT-OVAL, CHIPPED ON ONE SIDE. *THIS TYPE COULD BE EARLIER THAN 1620 (27.12.86)

2. (10.10.82)

C. 1620-40. L. TYPE 5. S.B.D. 3 MM. FINE ROULETTING BAND ROUND LIP. LIP CHIPPED R.H.S. HEEL-ROUND. *COULD DATE EARLIER THAN 1620.

3. (2.11.82)

C. 1620-40. L. TYPE 5. S.B.D. 3.1 MM - FLATTENED, BOTTOM EDGE. ROULETTING BAND ROUND LIP. HEEL-ROUND. IRON STAINING.

4. (3.10.82)

C. 1640. S.B.D. 2.75 MM ROULETTING BAND ROUND LIP. LIP CHIPPED. HEEL-ROUND.

5. (21.11.82 - QUEENHITHE)

C. 1640. S.B.D. 3.4 MM. FINE ROULETTING BAND ROUND LIP. CHIPPED L.H.S. FOOT - HEART-SHAPED. IRON STAINING.

FIG. 1

6. (3.12.82.)-QUEENHITHE.

C. 1610-40. S.B.D. 3.1 mm. CHIPPED LIP. FOOT-ROUND -
STAMP IN RELIEF - LETTER 'T' WITH REVERSED 'S' SHAPE AND TWO
BRANCHES EITHER SIDE. SIMILAR TO 163, P. 127 BAR 97.

7. (10.10.82 - BROOK'S WHARF, QUEENHITHE.)

C. 1640-60. L. TYPE 4. S.B.D. 3.3 mm. ROULETTING BAND ROUND LIP.
LIP CHIPPED. FOOT-ROUND. IRON STAINS.

8. (3.12.82. - QUEENHITHE)

C. 1630-40. S.B.D. 3.5 mm. ROULETTING BAND ROUND LIP. POLISHED.
FOOT - HEART-SHAPED.

9. (20.9.82.)

C. 1640-50. S.B.D. 3.3 mm. GROOVED LIP. FOOT-OVAL.

10. (24.9.82)

C. 1640. S.B.D. 3 mm. PARTLY GROOVED LIP WITH SOME
ROULETTING. FOOT - HEART-SHAPED.

11. (4.12.82 NR. SOUTHWARK BRIDGE.)

C. 1640-50. S.B.D. 3.3 mm. ROULETTING BAND ROUND LIP.
FOOT - ELONGATED HEART-SHAPED.

FIG. 1

12. (3.12.82) - QUEENHITHE.

C.1640-60 S.B.D. 3.2 MM. ROULETTING BAND ROUND LIP.
POLISHED. HEEL-ROUND.

13. (24.9.82)

C.1630. L. TYPE 8. S.B.D. 3.0 MM. FINE ROULETTING BAND
ROUND LIP. FLATTENED, FORWARD-POINTING SPUR.

14. (13.10.82).

C. 1630-40. L. TYPE 8. S.B.D. 3.5 MM. FINE ROULETTING BAND
ROUND LIP. FLATTENED SPUR.

15. (14.10.82)

C.1640-50 S.B.D. 3.0 MM. UNEVEN LIP SURROUND - FINE
ROULETTING BAND. CLAY OF BOWL CAVITY - UNBLACKENED.
FLATTENED SPUR.

16. (20.2.82.)

C.1640-60. L. TYPE 9. S.B.D. 3.5 MM. BROKEN LIP. ROULETTING
BAND EVIDENT. FLATTENED SPUR.

FIG. 1.

17. (17.12.82) - QUEENHITHE.

C. 1630-40. S.B.D. C. 3.3 MM. FINE ROULETTING BAND
ROUND LIP. HEEL - ROUND.

18. (17.12.82) - VINTRY WHARF.

C. 1630. L. TYPE 8. BROKEN LIP. ROULETTING BAND EVIDENT FRONT
OF LIP. S.B.D. 3.0 MM. FLATTENED SPUR.

19. (6.10.82)

C. 1630-50 S.B.D. 3.5 MM. GROOVED LIP. FOOT - ROUND,
MERGED INTO STEM.

20. (21.11.82) - QUEENHITHE.

C. 1630-50. S.B.D. 3.3 MM. LIP SPORADICALLY GROOVED
AND ROULETTED. FOOT - ROUND, ALMOST MERGED INTO STEM.

21. (16.11.82) - QUEENHITHE.

C. 1630-50. S.B.D. 3.0 MM. POOR QUALITY BOWL, CLUMSILY
GROOVED. FOOT - ROUND, MERGED INTO STEM.

FIG 1.

22. (21-11-82) - QUEENHITHE

C. 1640-60. S.B.D. 3.0 MM. FLAT, THICK LIP, NO ROULETTING.
POLISHED. HEEL - ROUND.

23. (24.9.82).

C. 1640-60 S.B.D. 2.5 MM. ROULETTING BAND ROUND LIP
HEEL - SPLAYED AND HEART-SHAPED.

24. (6.10.82.)

C. 1640-60. S.B.D. 2.8 MM. FINE, DEEP ROULETTING BAND
ROUND LIP. BOWL, SHINY AND BLACKENED. HEEL - ROUND AND SPLAYED

25. (3.1.83.) - QUEENHITHE.

C. 1630. L. TYPE 8. S.B.D. 3 MM. CLAY STAINED R.H.S. BOWL/STEM WITH
IRON. REST OF SURFACE PITTED AND MOTTLED. FRONT OF LIP CHIPPED. ROULETTING
BAND ROUND LIP. STEM LENGTH FROM BACK OF SPUR TO BREAK - 33 MM.

26. (15.12.85) QUEENHITHE.

C. 1630. L. TYPE 8. S.B.D. 3 MM. OVAL STEM-BREAK; STUB SPUR WITH FLAT BASE; SLIGHT FLASHING
ON SEAM OF SPUR; GREYISH SURFACE; FAINT IRON STAINS; ROULETTING UNDER BEVELLED LIP.

27. (1988.) BLACKFRIARS BRIDGE.

C. 1610-30. S.B.D. 3.1 MM. FINE ROULETTING. SMALL BULBOUS BOWL. ROUGH SURFACE. SOME FISSURES
ON BACK.

FIG. 2.

1. (10.10.82)

C. 1630-50.

S.B.D. 3.6 MM. ROULETTING BAND ROUND LIP.

FOOT — OVAL.

2. (10.10.82).

S.B.D. 3.3 MM. ROULETTING BAND ROUND LIP.

FOOT — ROUND, MERGED INTO STEM. C. 1630-50.

3. (3.12.82) — QUEENHITHE.

C. 1630-40.

S.B.D. 3.0 MM. LIP CHIPPED. FINE

ROULETTING BAND. CLAY — DISCOLOURED. HEEL — ROUND.

4. (24.9.82.)

C. 1640-60. L. TYPE 10. S.B.D. 3.5 MM. LIP DEEPLY GROOVED WITH ROULETTING. POLISHED. HEEL — ROUND.

5. (13.10.82)

C. 1640-50

S.B.D. 3.2 MM. FRONT OF BOWL MISSING.

LIP GROOVED WITH ROULETTING. CLAY — GREY COLOURED.

FOOT — ROUND. STAMPED WITH 'T.B' ENTWINED WITH TOBACCO PLANT IN RELIEF.

FIG. 2.

6. (17.12.82.) — SOUTHWARK BRIDGE.

C. 1640-60. L. TYPE 10. S.B.D. 2.75 MM. WIDE ROULETTING BAND
ROUND LIP AT BACK OF BOWL. HEEL — 'ROUNDED' SQUARE.

7. (26.11.82.) — QUEENHITHE

C. 1640-60 S.B.D. 2.8 MM. LIP CHIPPED, BLACKENED
INSIDE. FINE ROULETTING, BACK OF BOWL. BOWL PROFILE — SLENDER-
WAISTED. HEEL — LARGE, SPLAYED, IRREGULAR HEART-SHAPED. TILTED.

8. (3.10.82.)

C. 1640-60 S.B.D. 2.9 MM. PARTIAL GROOVING AND
ROULETTING ROUND LIP. BOWL — POLISHED, WHITE INSIDE. HEEL —
SPLAYED AND HEART-SHAPED.

9. (3.10.82.) — SOUTHWARK BRIDGE.

C. 1640-60. S.B.D. 3 MM. CLAY MOTTLED AND
DISCOLOURED. ROULETTING BAND ROUND LIP. HEEL — SLIGHTLY SPLAYED
AND PEAR-SHAPED.

10. (AUTUMN 1982)

C. 1640. S.B.D. 3.3 MM. WHITE CLAY WITH
BURNISHING LINES. ROULETTING BAND ROUND LIP. ROUND, FLAT HEEL.

FIG. 2.

11. (3. 1. 83.) - QUEENHITHE.

C. 1640-60

S.B.D. 2.5 MM. CLAY - CLEAN, OFF-WHITE,

IRON STAIN L.H.S. OF BOWL. FINE ROULETTING BAND ROUND LIP.

BOWL CAVITY, NO STAINING. HEEL - ROUND, WITH SMALL CIRCULAR FLAW.

12. (3. 1. 83.).

C. 1640.

S.B.D. 3 MM. LIP CHIPPED. TRACES OF GROOVING.

BADLY PITTED BUFF COLOURED CLAY. SMALL FOOT BLENDED TO STEM.

13. (14. 2. 83.) - QUEENHITHE.

C. 1620-40.

S.B.D. 3.1 MM. LIP CHIPPED BACK OF BOWL;

FINE ROULETTING ROUND LIP. SMALL, ROUND, FLAT HEEL.

14. (31. 1. 83). SOUTHWARK BRIDGE / DOWGATE.

C. 1640-60.

S.B.D. 3.2 MM. A SLIM-WAISTED BOWL, BLACKENED TOWARDS

THE BASE AND STEM. A THIN LINE OF ROULETTING ROUND LIP; SMALL, FLATTENED OVAL

BASE WITH MOULD LINE.

15. (31. 1. 83). SOUTHWARK BRIDGE.

C. 1640-60. L. TYPE 11. S.B.D. 3 MM. CLEAN, WHITE, WELL-FORMED BOWL WITH LARGE, HEART-SHAPED HEEL WITH AN IMPERFECTION OR SMALL NICK. ROULETTING BAND ROUND LIP. BOWL ALSO WHITE INSIDE.

FIG. 2.

16. (31.1.83.) QUEENHITHE.

C. 1640-60. S.B.D. 3 MM. WHITE, BURNISHED BOWL WITH FAINT IRON-STAINS L.H.S.; BROWN MARK AT STEAM BREAK. LIP CHIPPED; LARGE, HEART-SHAPED HEEL; SMALL NICK R.H.S. ROULETTING, VARYING IN DEPTH AND CLARITY AROUND LIP.

17. (15.3.83.) PAUL'S WHARF.

C. 1620-40. S.B.D. 4 MM. WHITISH, PITTED BOWL, FRONT BROKEN. FINE ROULETTING ROUND LIP. RELIEF STAMP ON BASE: 'S' AND PELLET. SIMILAR BAR 97, P. 128, NO. 3. BUT THIS STAMP IS INCUSE.

18. (14.4.83.) TRIG LANE STAIRS.

C. 1620-40. S.B.D. 3 MM. POLISHED BOWL WITH SMALL, ROUND CAVITY. DULL, MUSHROOM CLAY, DARKER BACK OF BOWL. SMALL, HEART SHAPED BASE WITH RELIEF STAMP. POSSIBLY THE LETTER 'I' WITH CURLING DECORATION EACH SIDE.

19. (26.4.83.) QUEENHITHE.

C. 1620-30. L. TYPE 5. S.B.D. 3.15 MM. BOWL FRAGMENT WITH SQUARE, SHALLOW BASE, STAMPED INCUSE, I/R. SMALL STAR BETWEEN LETTERS. Cf. OSWALD, 1975, BAR P. 36, NO. 27. AND BAR 97, P. 276, NO'S 10 & 12.

20. (26.4.83.) QUEENHITHE.

C. 1630. L. TYPE 8. S.B.D. 3 MM. GREYISH-WHITE, SMOOTH FABRIC; ROULETTED LIP; WELL-SMOKED. BLUNT, SMALL SPUR, TENDING BACKWARDS.

FIG 2.

21. (15.3.83.) QUEENHITHE.

C. 1630. L. TYPE 6. S.B.D. 3.5 MM. BOWL WITH SMALL, ROUND, CLUMSILY
ROULETTED MOUTH, BROAD, FLATTISH FRONT, AND SMALL POINTED SPUR TENDING
FORWARDS. LIP CHIPPED R.H.S.

22. (13.5.83.) QUEENHITHE.

C. 1620. L. TYPE 5. S.B.D. 2.98 MM. CREAMY BOWL; FINE ROULETTING AROUND LIP.
OVAL BASE, SLOPING SIDEWAYS. FAINT GREY BLEMISHES ON CLAY.

23. (26.7.83.) QUEENHITHE.

C. 1610. L. TYPE 6. S.B.D. 2.9 MM. TINY, ROULETTED BOWL, FRONT LIP CHIPPED.
SMALL, POINTED SPUR WITH FLASH-LINE. FABRIC-ROUGH, OFF WHITE / CREAM.

FIG 3.

1. (24.9.82.)

C. 1640-60. L. TYPE 10. S.B.D. 3MM. LIP, BROKEN - BACK/R.H.S.
ROULETTING BAND ROUND LIP. POLISHED. HEEL - ROUND. RED STAINING
ON BOWL AND STEM, POSS. IRON STAINING. REMAINING STEM: 95.5 MM
FROM BACK OF HEEL TO BREAK.

2. (13.10.82.)

C. 1640-60. S.B.D. 3MM. LIP SLIGHTLY CHIPPED. NO
PRONOUNCED GROOVING. HEEL - ROUND.

3. (3.12.82.) - QUEENHITHE.

C. 1640-60. S.B.D. 3MM. FINE ROULETTING BAND
ROUND LIP - R.H.S. OF WHICH IS CHIPPED. FOOT ROUND.

4. (16.11.82.) - QUEENHITHE.

C. 1640-60. L. TYPE 10. S.B.D. 3.4 MM. ROULETTING ROUND BACK
OF BOWL. HEEL - SLIGHTLY SPLAYED, ROUND.

5. (3.12.82.) - SOUTHWARK BRIDGE.

C. 1640-60. S.B.D. 3.00 MM. LIP GROOVED. BLACKENED
INSIDE BOWL. HEEL - ROUND. STEM LENGTH - 74 MM - BACK OF HEEL
TO BREAK.

FIG. 3.

6. (AUTUMN 1982.)

C. 1640-60 L. TYPE 10. S.B.D. 2.9 MM. WHITE, BURNISHED CLAY.

FINE ROULETTE LINE ROUND LIP. LIP CHIPPED L.H.S./BACK. HEEL - ROUND.

7. (13.5.82.) SOUTHWARK BRIDGE.

C. 1630-40. L. TYPE 5. S.B.D. 3 MM. BUFF COLOURED BOWL, FINE ROULETTE AROUND LIP. SQUARISH, FLAT HEEL.

8. (13.5.82.) SOUTHWARK BRIDGE.

C. 1630-40. L. TYPE 7. S.B.D. 3.3 MM. WELL-MOULDED BOWL, BULBOUS, GREYISH WHITE, DEEPLY ROULETTE LIP, SQUARE BASE. BURNISHING LINES EVIDENT.

9. (13.5.82.) TRIG LANE STAIRS.

C. 1640-50. S.B.D. 3 MM. DISCOLOURED BOWL, NO ROULETTE, WELL-SMOKED, BACK OF LIP CHIPPED. PART OF BASE MISSING. STAMP WITH CIRCLE IN RELIEF: I/C, WITH PELLETS ABOVE AND BELOW. SIMILAR FROM BATTERSEA, OF A LATER DATE. ALSO COMPARE BAR 97, P. 165 NO. 20.

10. (7.6.83.) QUEENHITHE.

C. 1640-60. L. TYPE 10. S.B.D. 3 MM. PALE FAWN/MUSHROOM PIPE, REGULAR MOUNDING; ROUGH SURFACE; FINE ROULETTE LINE AROUND LIP; WELL-SMOKED. SQUARISH BASE, VERY SLIGHTLY CONCAVE. MOULD LINE APPARENT.

FIG. 3.

11. (9.8.83) QUEENHITHE.

C. 1640-50. S.B.D. 3.5 MM. ROUGH FABRIC, ROULETTED LIP, CHIPPED FRONT, SMOKE STAINS IN CAVITY. BASE BROKEN OFF, BUT MARK B/C IN RELIEF NEAR COMPLETE. TWO PELLETS BETWEEN LETTERS. CIRCLE SURROUND WITH STARS OR PELLETS. INITIALS NOT LISTED BY OSWALD. SIMILAR FROM CHESTER, BAR 78, AGAIN, THESE PIPES ARE UNPROVENENCED.

12. (22.8.83) QUEENHITHE.

C. 1640-60. S.B.D. 3.5 MM. BULBOUS, ROULETTED BOWL, WELL SMOKED, ROUND LIP. DAPPLED MARKS L.H.S. GREY/BLUE MARKS R.H.S. SQUARE BASE. PARTLY OBSCURED S/V MARK ON TOP OF STEM. A WELL SPREAD OUT DISTRIBUTION FOR THIS UNKNOWN MAKER.

13. (22.8.83) QUEENHITHE.

C. 1640-60. S.B.D. 3.2 MM. GREYISH PIPE WITH ROULETTING ROUND LIP. THE BASE HAS A 'PHANTOM' SPUR. IT CERTAINLY HASN'T BEEN BROKEN OFF, AS IT IS PARTLY SHINY THERE, THE RESULT OF STROKING WITH A TOOL.

14. (7.10.83) PAUL'S WHARF.

C. 1640-60. L. TYPE 10. S.B.D. 3 MM. ROULETTED BOWL OF YELLOWISH BROWN HUE. BASE STAMP OF E/S IN RELIEF WITH PELLETS. PRESUMABLY EDMOND STILES 1657, FINSBURY PL. LISTS.

15. (7.10.83) KENNET WHARF.

C. 1640-60. L. TYPE 10. S.B.D. 3.4 MM. RATHER BULBOUS, SHINY BOWL, PARTIALLY ROULETTED LIP, BEARING A DEEPLY CLEFT, THOUGH OFF-CENTRE WHEEL STAMP.

16. (5.5.84) QUEEHITHE.

C. 1640-60. L. TYPE 9. S.B.D. 2.9 MM. ROUND, NARROW MOUTH, ROULETTED (BLURRED FRONT). BURNISHED BOWL, ALTHOUGH PARTLY ROUGHENED. BREAK ON STEM ROULETTED.

FIG. 3

17. (18. 4. 85) SOUTHWARK BRIDGE AREA.

C. 1635-60. S.B.D. 2.5 MM. 'JONAH' BOWL FRAGMENT ; L.H.S. : PART OF CREATURE'S MOUTH WITH TEETH & EYE APPARENT ; R.H.S. 'JONAH' BEING SWALLOWED ; BEEDING ROUND BASE. OR DOES THE PICTURE SIGNIFY W. RALEIGH SPAT OUT BY A CROCODILE BECAUSE HE DOES NOT TASTE GOOD AFTER SMOKING TOBACCO? DUCCO (BAR 106 (ii)), P. 385 DESCRIBES THE JONAH PIPES AS BEING 'THE WORST SORT OF KITSCH' OF THEIR DAY AND FOUND COMMONLY IN SAILORS' QUARTERS / POORER DISTRICTS, WHICH WOULD FIT WELL WITH THE 'JONAH' THEORY. SEE IBID P. 380-2. THE PRESENT WRITER FAVOURS THE 'JONAH & THE WHALE' THEORY AT LEAST FOR THIS EXAMPLE. AGAIN THESE PIPES HAVE BEEN FOUND WITH 'JONAS' ON THE SIDE.

18. (19. 8. 1986).

C. 1610-30. S.B.D. 3 MM. WATER-WORN CLAY; CHIPPED LIP; CHIPPED STEM R.H.S.; 'SLIPPED' MILLING SOME GRAY 'SMUDGES' ON BOWL FRONT.

19. (16. 12. 1986). SOUTHWARK BRIDGE.

C. 1610-40. S.B.D. 3.5 MM. SMOKED, WELL-POLISHED; SQUARE BASE; FINE MILLIGRAIN; SMOKE-STAIN, FRONT OF BOWL; OFF-WHITE CLAY; ROUND MOUTH.

20. (16. 12. 1986). QUEENHITING / SOUTHWARK BRIDGE.

C. TEMP. JAS. I. S.B.D. 3.2 MM. NARROW, ROUND MOUTH; CLEAN CAVITY; DEEP ROULETTEING; OVAL HESL, FORWARD SLOPING; OFF-WHITE / GRAY CLAY; BURNISHED SURFACE.

FIG. 4.

1. (14.2.83.) QUEENHITHE.

C. 1640-60. L. TYPE 10. S.B.D. 3 MM. DISCOLOURED CLAY - BLUE/GREY PATCHES;
FINE ROULETTING ROUND LIP. HEART-SHAPED BASE WITH CIRCULAR INCISE STAMP
OF ROSE.

2. (13.5.83.) DOWGATE.

C. 1650-60. L. TYPE 10. S.B.D. 3.5 MM. WEATHERED AND IRON-STAINED
BOWL, LIP CHIPPED, FINE ROULETTING. HEEL WITH STAMP IN RELIEF:
THREE WHEATSTHEAVES WITH CENTRE PELLET, WITHIN HEART. LIKELY TO HAVE
BEEN MADE FOR THE THREE WHEATSTHEAVES TAVORN (AT THREE CRANES WHARF,
LILLYWHITE LISTS FOR 1640-60'S. Cf. BAR 97, P. 130.

3. (26.7.83.) QUEENHITHE.

C. 1630-50. L. TYPE 5. S.B.D. 3 MM. CREAMY, OFF-WHITE FABRIC. LIP
CHIPPED AND ROULETTED. SMOKE STAINS IN CAVITY. IRREGULAR BASE WITH
WHEEL STAMP, TO ONE SIDE, WITH EIGHT RADIALS. TOP OF STEM CHIPPED
AT BREAK.

4. (26.7.83.) TRIG LANE STAIRS.

C. 1640-60. L. TYPE 5. S.B.D. 3.1 MM. BUFF COLOURED BOWL, NARROW MOUTH,
ROULETTED LIP, SEAM SHOWING FRONT OF BOWL. CHIPPED BASE WITH STAMPED HEART
AND DIAGONAL LINES.

FIG. 4.

5. (8.11.83.) TRIG LANE STAIRS.

C. 1630-40. S.B.D. 3.1 MM. OFF-WHITE, SQUAT BOWL, DEEP ROULETTING RIM BACK. SQUARE, SHALLOW BASE WITH INCISED ? VENT. ALSO VENT L.H.S. OF BOWL. SLIGHTLY LATER BOWL FROM GREENWICH WITH SIMILAR STYLE AND MARK. PERHAPS A CRUDE MARK OF IDENTIFICATION CONCERNING A MAKER WHERE MORE THAN ONE WAS EMPLOYED, OR PERHAPS A BATCH MARK.

6. (3.2.84.) QUEENHITHE.

C. 1620. L. TYPE 5. S.B.D. 3.1 - 3.6 MM. ROUND MOUTH, DOWN-SLOPING. ROULETTED. SMOKE STAINS IN TOP OF CAVITY. SQUARISH HEEL. END ELEVATION - PIPE LEANS TO THE LEFT. STEM OVAL. S.B. OVAL.

7. (17.9.84.) QUEENHITHE.

C. 1630-40. S.B.D. 3.2 MM. SMOOTH, BULBOUS PIPE WITH CIRCULAR MOUTH; SMOKE CAVITY; LIP ROULETTED; CIRCULAR, DROOPING FOOT.

8. (2.11.84.) SOUTHWARK BRIDGE.

C. 1600-20. S.B.D. 2.75 MM. OFF-WHITE BOWL; ROULETTED ROUND LIP - DOUBLE IN PLACES; NARROW, ROUND MOUTH; CLEAN CAVITY; OVAL BASE - TAILING? A VERY SMALL BOWL.

9. (18.4.85.) QUEENHITHE.

C. 1620-40. S.B.D. 3.4 MM. PITTED, ROUGH SURFACE; CAVITY FILLED WITH SOLID SAND?; BACK OF LIP CHIPPED - ROULETTED; DEPRESSED MARK OF 'GAUNTLET', THOUGH HERE INDETERMINATE.

10. (17.6.85.) QUEENHITHE.

C. 1620-40. S.B.D. 3.1 MM. BACK OF LIP ROULETTED; ROUND BASE WITH HN (OR NH?) INCISE. OSWALD THINKS HN (IN LITT. 1985) & ELKINS (EXAMPLES BRIT. MUS. & QUEENHITHE).

11. (11.9.85) QUEENHITHE/SOUTHWARK BRIDGE.

C. 1620. L. TYPE 5. S.B.D. 3 MM. SMOKE, POLISHED PIPE: 1/R INCISE ON SQUARE BASE. Cf. FIG. 2 NO. 19.

FIG. 4.

12. (14.2.1986).

C. 1640? S.B.D. 3 mm. WELL-BURNISHED; DOWNWARD SLOPING BASE; MA STAMP IN RELIEF; FISH? MOTIF ABOVE LETTERS; PROBABLY DUTCH. DUCCO (MEEREN VAN GOUDSE PIJPENMAKERS 1660-1940) LISTS A 'MICHEL ANDRIESZ' BUT HIS MARK IS WITH A CROWN ABOVE & LISTED AS: 1675/1685-1695/1705. THIS PIPE LOOKS EARLIER.

13. (25.3.1986). PAUL'S WHARF.

C. 1610-40. S.B.D. 3 mm. DULL GREY FABRIC; ROUND STEM BREAK WITH CENTRAL BORE; BATTERED RELIEF BASE STAMP: '[E]SX' WITH FLEUR-DE-LYS; HEART SURROUND. PERHAPS LETTERS REFER TO ROBERT DEVGREUX, EARL OF ESSSEX, b. 1582, SON OF THE SAME. IN 1620, SERVED IN THE PALATINATE, LATER IN HOLLAND. IN THE CIVIL WAR, GAINED THE BATTLE OF EDGEHILL, TOOK READING, RAISED THE SIEGE OF GLOUCESTER, & FOUGHT THE FIRST BATTLE OF NEWBURY. DIED 1646. CF. BAR 14, FIG. 14 NO. 14.

14. (3.11.1986) SOUTHWARK BRIDGE AREA.

C. 1600-40. S.B.D. 4 mm AT WIDEST POINT. SQUARE BASE; SMALL, ROUND, CHIPPED LIP; DEEP ROULETTING BACK & FRONT OF LIP; GREY/BUFF SURFACE.

15. (3.11.1986). SOUTHWARK BRIDGE AREA.

C. 1610-40. S.B.D. 3.5 mm. CRUDELY ROULETTED LIP; SPECKLED FABRIC; GREY/BUFF; CLEAN INSIDE. *SEE A. OSWALD'S COMMENT ON THIS TYPE IN 'EXETER CLAY PIPES' 1980 P. 293 (FIG. 163) 'THE EXCAVATION (SIC) AT CARTER'S GROVE COL. WILLIAMSBURG, SUGGESTS A SOMEWHAT EARLIER DATE' (THAN 1610-40).

16. (3.11.1986) SOUTHWARK BRIDGE AREA.

C. 1610-40. S.B.D. 3 mm. POLISHED; IMPERFECTLY ROULETTED BUT GENERALLY A GOOD QUALITY PIPE. WK LIQUATED. CF BAR 91 P. 279, NO. 17 WHERE A SIMILAR DIE IS SHOWN THOUGH WITH SEPARATE WK. W. REMARKS (IN LITT. 1986) 'NEAR DUPLICATES IN MUS. OF LOND. & B.M.' BUT THIS DIE IS NEW.

17. (AUG. 1987) SOUTHWARK BRIDGE AREA.

C. 1610-40. S.B.D. 3 mm. WELL-MADE BOWL; ROULETTED LIP; EIGHT-POINTED 'STAR' ON BASE.

FIG. 4.

18 (AUG. 1987) QUEENHITHE.

A. 1630-50. S.B.D. 3 MM. ROULETTE UP; L.H.S. OF BOWL MISSING. CR INCISE ON BASE.
A. OSWALD COMMENTS (IN LITT. 22.8.1987) 'YOUR CR IS NOT IN MY COLLECTION AS YOU
SAY RICHMAN IS THE ONLY CANDIDATE AT PRESENT.' CLEMENT RICHMAN 1627 (M.)
RATCLIFFE. STEPNEY. P. REGS. (OS. '75).

19. (AUG. 1987) QUEENHITHE AREA.

C. 1620-40? S.B.D. 3.5 MM. SMALL SV STAMP; PART OF BASE SHOWING.

20. (10.9.1987) QUEENHITHE DOCK.

C. 1600-30. S.B.D. 3.6 MM. ROULETTE; ROUGH SURFACE; CHIPS NEAR BASE. NO MARK.

21. (10.9.1987) TRIG LANE STAIRS.

C. 1620-50. S.B.D. 3 MM. ROUND, FLAT UP; RATHER SPLOYED BASE. CF. BAR 97. P. 130. TUDOR ROSETTE.

22. (14.9.1987)

C. 1610-40. S.B.D. 2.5 MM. ROULETTE UP; IRON-STAINED; ROUND STEM-BREAK. ROULETTE ON HGL.

FIG. 5.

1. (1988) DOWGATE AREA.

c. 1640-60. S.B.D. 2.6 MM. ENCRUSTED BOWL; I P STAMP IN RELIEF. TOBACCO PLANT? IN BETWEEN.

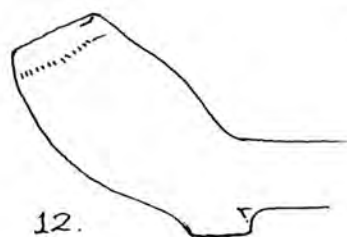
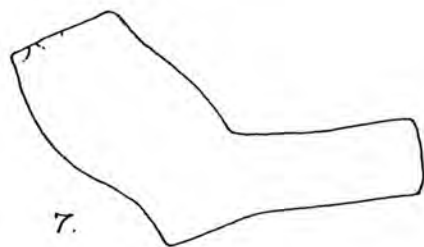
2. (8.3.1989) BLACKFRIARS.

c. 1640-60. S.B.D. 3 MM. WORN. ROULETTE. CHIPPED UP. 'WHEEL' MARK. PELLETS BETWEEN SPOKES. WORN STAMP.

BLACKFRIARS to DOWGATE (N.BANK)

R. THAMES

1/1 - C.1640 to 1680.



18.

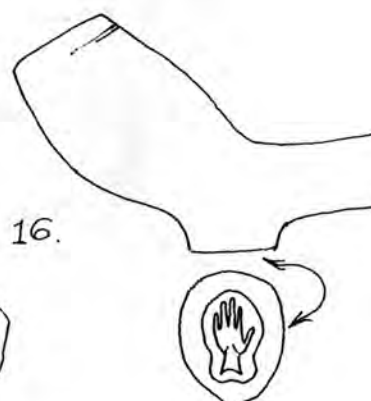
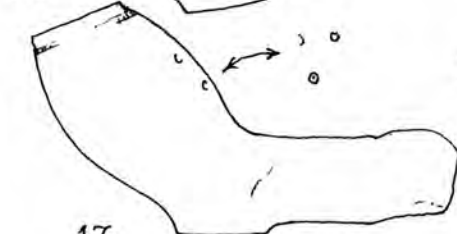
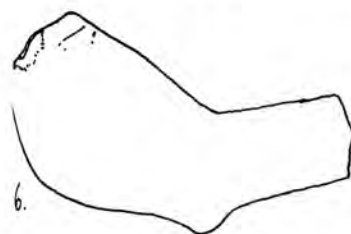
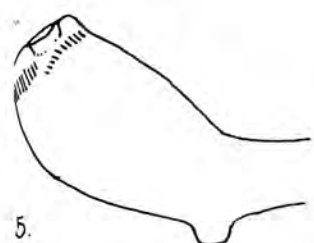
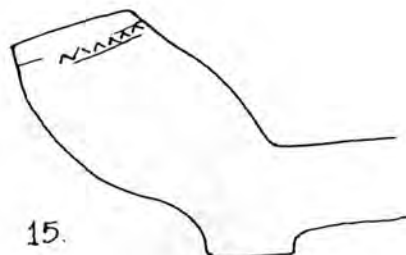
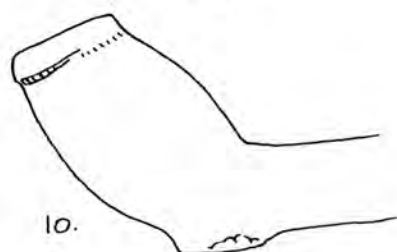
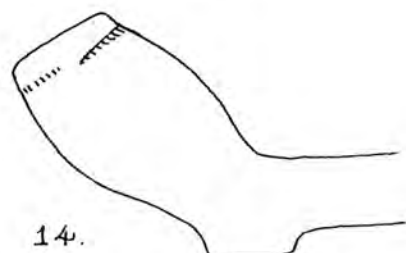
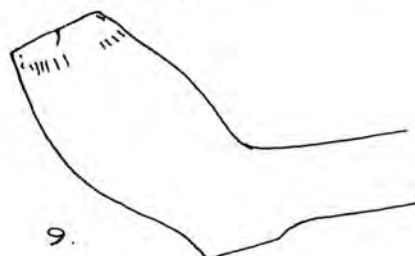
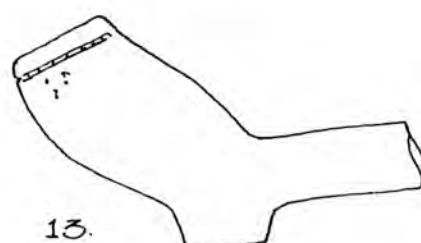
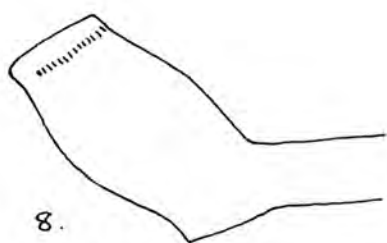
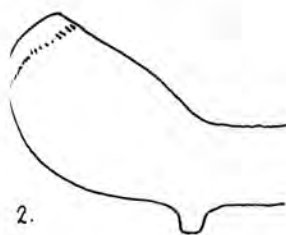


FIG. 1

BLACKFRIARS to DOWGATE (N.BANK)

R. THAMES

1/1 - C.1640 to 1680.

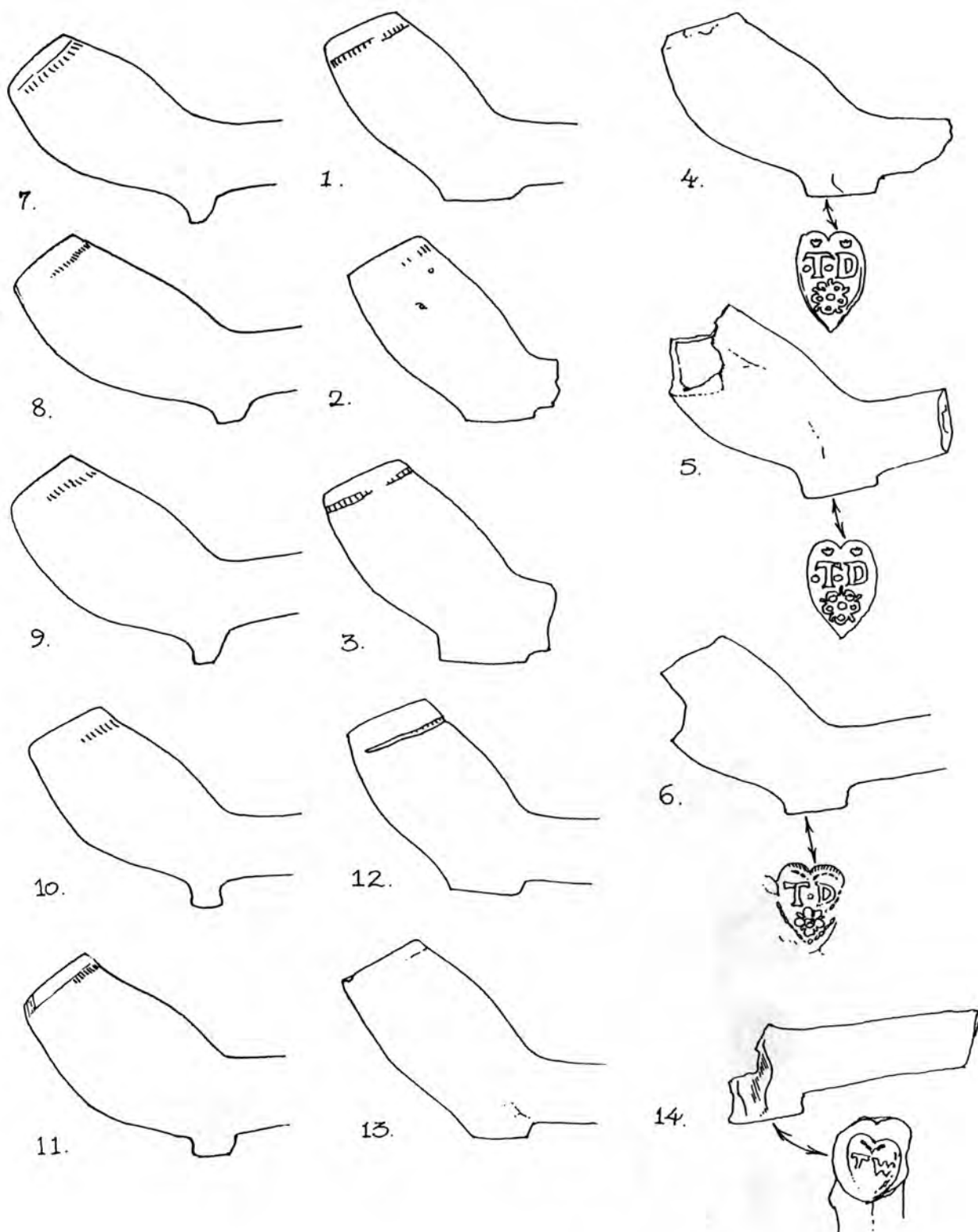
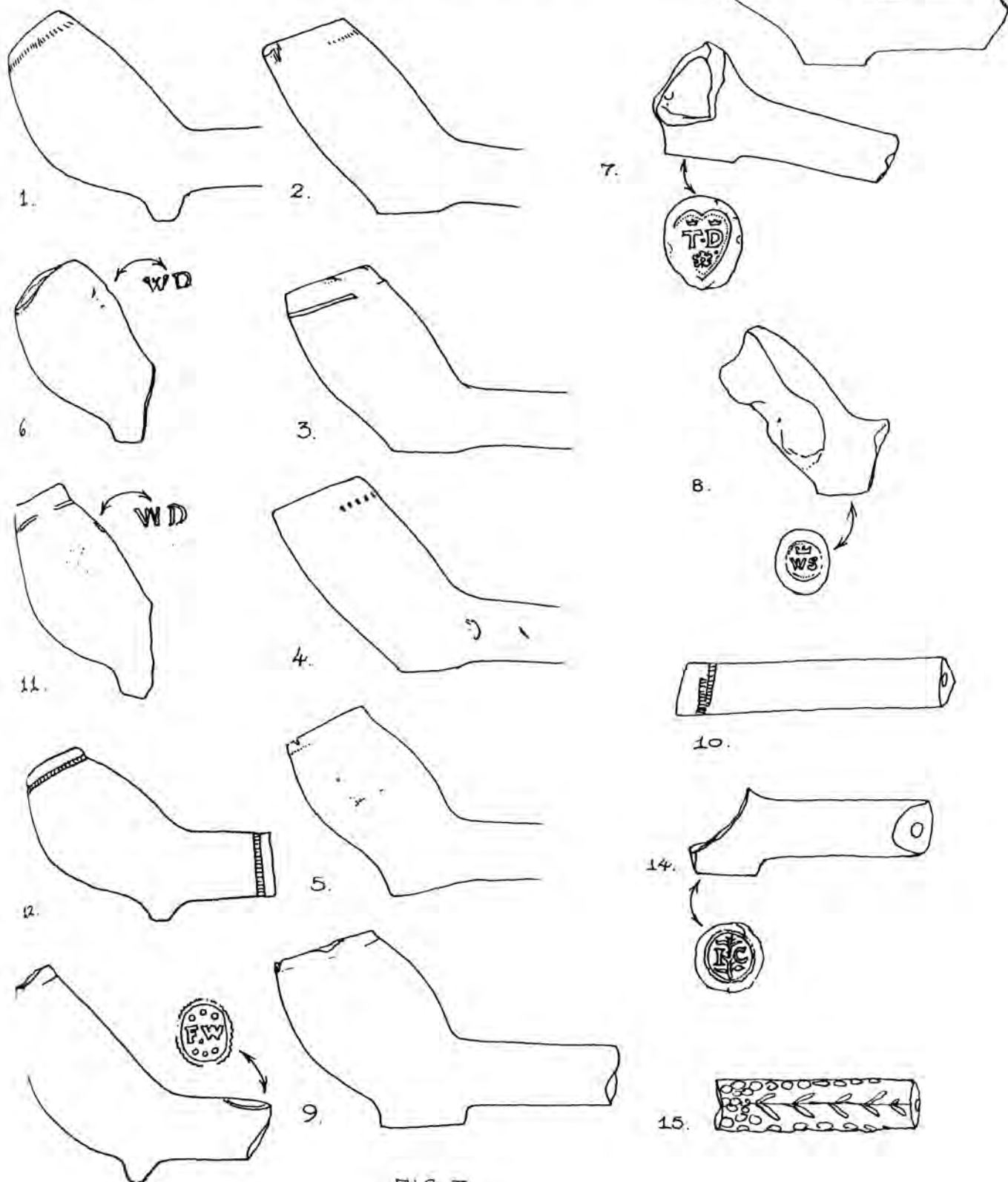


FIG. 2.

BLACKFRIARS to DOWGATE (N. BANK.)

R. THAMES.

1/1 - C.1640 to 1680.



BLACKFRIARS to DOWGATE (N.BANK)

R. THAMES

1/1 - C.1640 to 1680.

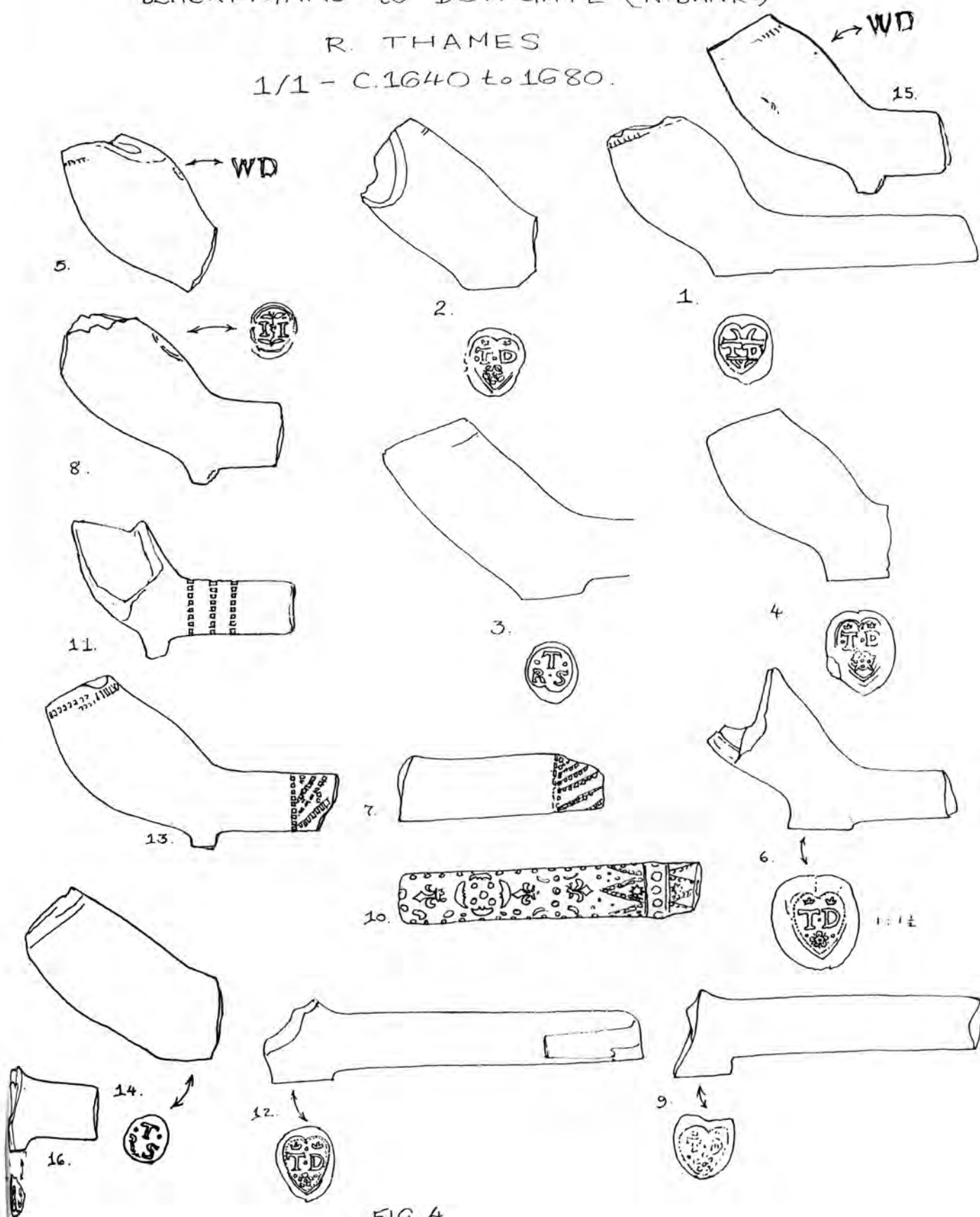


FIG. 4.

FIG. 1.

1. (24.9.82.)

C. 1650-70 S.B.D. 2.75 mm, ROULETTING BAND BACK AND SIDES OF BOWL. CLAY—SLIGHTLY POLISHED. BOWL PROFILE—SLENDER-WAISTED, FLATTENED, FORWARD-POINTING SPUR.

2. (16.11.82.)—QUEENHITHE.

C. 1650-70. S.B.D. 3 mm. UNEVEN ROULETTING BAND ROUND LIP. BLACKENED INSIDE BOWL. CLAY—POLISHED. UPRIGHT, FLATTENED SPUR.

3. (8.11.82.)—QUEENHITHE.

C. 1650-70. S.B.D. 3.3 mm. GROOVE—BACK OF LIP. CLAY, SLIGHTLY POLISHED. SMALL, FLATTENED, OVAL SPUR.

4. (20.9.82.)

C. 1650-70. S.B.D. 3 mm. DEEP ROULETTING BAND, BACK OF BOWL LIP. BOWL—MORE BULBOUS THAN 1, 2, & 3. FLATTENED AND OBLONG SPUR. STEM LENGTH FROM BACK OF SPUR TO BREAK—81 mm.

5. (3.10.82.)

C. 1650-70. S.B.D. 2.8 mm. ROULETTING BAND ROUND LIP. LIP CHIPPED L.H.S. FLATTENED SPUR, TILTED BACK. STEM LENGTH FROM BACK OF SPUR TO BREAK—77.5 mm.

FIG. 1.

6. (3.10.82.)

C. 1660. S.B.D. 2.8 MM. LIP-CHIPPED. MOTTLED, DISCOLOURED CLAY. PIECE OF GRIT EMBEDDED BEHIND BOWL, TOP OF STEM. PRONOUNCED JOIN LINE BENEATH STEM. SHALLOW SPUR.

7. (24.9.82.)

C. 1650-70. S.B.D. 2.8 MM. CRUDELY MADE PIPE WITH JAGGED MOULD SEAM ON FRONT OF BOWL. CONCAVE FOOT-HEART-SHAPED.

8. (21.11.82.) — QUEENHITHE.

C. 1640-60. S.B.D. 3.3 MM. DISCOLOURED AND BLOTCHED SURFACE. 'DROPPED' BOWL. FAINT ROULETTE BAND BACK AND L.H.S. OF LIP. FOOT-ROUND. STEM LENGTH FROM BACK OF HEEL TO BREAK — 78 MM.

9. (10.10.82.)

C. 1660-80 S.B.D. 2.75 MM. CRUDELY APPLIED ROULETTE BAND ROUND LIP. HEEL-ROUND. SOME REDDISH IRON STAINING. LENGTH OF STEM FROM BACK OF HEEL TO BREAK — 99.5 MM.

FIG. 1.

10. (3.12.82.) - QUEENHITHE.

C. 1660-80. S.B.D. 3 MM. ROULETTING BAND ROUND LIP -
DEEPER AT FRONT. FOOT - FLATTISH ROUND - SPLAYED. STEM LENGTH FROM
BACK OF FOOT TO BREAK - 94 MM.

11. (DEC. '82.)

C. 1660-80. S.B.D. 2.9 MM. CLEAN, WHITE CLAY.
HEEL - ROUND. STEM LENGTH FROM BACK OF HEEL TO BREAK - 55 MM.

12. (3.12.82.) SOUTHWARK BRIDGE.

C. 1650-70. S.B.D. 3 MM. DISCOLOURED, POLISHED CLAY.
FINE ROULETTING LINE ROUND LIP. HEEL - SPUR-LIKE, ROUND AND
SMALL, VERY SLIGHTLY SPLAYED.

13. (16.10.82.)

C. 1660-80. S.B.D. 3.3 MM. DEEP ROULETTING LINE
MAINLY L.H.S. HEEL - ROUND. APPARENT SCORCH MARKS R.H.S.

14. (16.11.82.) - QUEENHITHE.

C. 1660-80. L. TYPE 13. S.B.D. 2.9 MM. CLEAN, WHITE CLAY, SOME
STAINING FRONT OF BOWL. FINE ROULETTING BAND ROUND LIP.
HEEL - ROUND AND SPLAYED. STEM LENGTH FROM BACK OF HEEL
TO BREAK - 49 MM.

FIG 1.

15. (16.11.82) - QUEENHITHE.

C. 1660-80. L. TYPE. 13. S.B.D. 3MM. ROULETTING BAND BACK AND SIDES OF BOWL. BLACKENED INSIDE. CLAY - POLISHED. HEEL - ROUND. STEM LENGTH FROM BACK OF HEEL TO BREAK - 53MM.

16. (21.11.82) - QUEENHITHE.

C. 1660-80. L. TYPE. 13. S.B.D. 2.75MM. BACK OF LIP GROOVED. CLAY - POLISHED. HEEL - HEART-SHAPED. A GAUNTLET MARK IN RELIEF. SIMILAR: MUSEUM OF LONDON (NOTED OCT. 1987). SEE BAR 146(ii) P. 364.

17. (20.10.1986) TRIG LANE STAIRS.

C. 1650-80. L. TYPE 13. S.B.D. NONE. (BLOCKED) A 'WASTER' WITH BLOCKED STEM-GORE; INCISE MARKS: 'THREE' ON BACK; 'DICE' MARK OF FIVE ON BASE. THESE MARKS ARE RARE AND INDICATE A WHIM OF THE PIPE MAKER. (N.B.* MARCH 1989. DAVID HIGGINS SUGGESTS IT COULD BE PART A 'MULTIPLE' BOWL PIPE.)

18. (13.10.1986) PAUL'S WHARF.

C. 1660-1680? S.B.D. 3MM. SOME IRON & ALGAE STAINS; SV MARK INCISE. SEE DISCUSSION SV MARK IN SOCIETY FOR CLAY PIPE RESEARCH N/L 10 & 11. MAKER UNKNOWN. SEE BAR 97, LEG 1 FOR WV MARK. cf FIG. 7 NO 3 BELOW (1680-1710).

FIG. 2.

1. (4.12.82.) - QUEENHITHE.

C. 1660-80. S.B.D. 3 MM. CLEAN, WHITE CLAY.

ROULETTING BAND ROUND LIP. HEEL - ROUND, SLIGHTLY TILTED.

STEM LENGTH FROM BACK OF HEEL TO BREAK - 37 MM.

2. (MID. 1982.).

C. 1660-70. S.B.D. 2.9 MM. BOWL CURVES LESS

PRONOUNCED THAN 1. ROULETTING BAND MAINLY BACK OF LIP AND

R.H.S. HEEL - ROUND.

3. (20.9.82.)

C. 1660-80. L. TYPE 12. S.B.D. 3 MM. ROULETTING BAND ROUND LIP.

BOWL - POLISHED. HEEL - HEART-SHAPED, SPLAYED.

4. (10.10.82.)

C. 1670. L. TYPE 13. S.B.D. 2.5 MM. SMALL MOUTH. CLAY - POLISHED.

HEEL - ROUND. STAMP IN RELIEF - TD INSIDE HEART. CROWNS ABOVE

LETTERS - PELLETS BETWEEN THEM - TUDOR ROSE BELOW.

5. (16.11.82.) - PAULS WHARF.

C. 1660-80. L. TYPE 13. S.B.D. 3 MM. BROKEN MOUTH. STAMP ON HEEL

IDENTICAL TO NUMBER 4.

FIG 2.

6. (10.10.82.)

C. 1670. L. TYPE 13. S.B.D. 2.75mm. BOWL BROKEN FRONT AND R.H.S.
HEEL - ROUND. STAMP. SIMILAR TO 4. AND 5. BUT WITH A BEADED
BORDER TO THE HEART. THE CROWNS ARE MISSING ABOVE THE T D
AND THE ROSE IS OF A DIFFERENT DESIGN. POSSIBLY BY THE SAME
MAKER.

7. (20.9.82.)

C. 1660-80. L. TYPE 15. S.B.D. 3.5 mm. WHITE CLAY. ROULETTING
BAND MAINLY ROUND SIDES AND BACK OF BOWL LIP. SPUR POINTING
SLIGHTLY FORWARD.

8. (3.10.82.)

C. 1660-80. L. TYPE 15. S.B.D. 3 mm. LIP SLIGHTLY DENTED-FRONT.
ROULETTING BAND MAINLY ROUND BACK, R. H.S. TO FRONT.
FLATTENED SPUR SLIGHTLY WEBBED BY MOULD LINE. STEM LENGTH
FROM BACK OF SPUR TO BREAK - 53 mm.

9. (20.9.82.)

C. 166-80. L. TYPE 15. S.B.D. 3 mm. GREYISH CLAY PARTLY POLISHED.
ROULETTING BAND BACK OF LIP, R. H.S. TO FRONT. FORWARD POINTING SPUR,
FLATTENED. STEM LENGTH FROM BACK OF SPUR TO BREAK - 81.5 mm.
RUST STAINING, BACK OF BOWL AND END OF STEM.

FIG 2.

10. (24.9.82.)

C. 1660-80 L-TYPE 15. S.B.D. 3.5 MM. CLAY-MUSHROOM/WHITE ROULETTING BAND MAINLY ROUND BACK, R.H.S. TO FRONT OF LIP. BOWL CAVITY BLACKENED. SPUR-UPRIGHT, FLATTENED INTO 'BUTTON'. STEM LENGTH FROM BACK OF SPUR TO BREAK-58 MM.

11. (3.12.82.) QUEENHITHE.

C. 1660-80. S.B.D. 3 MM, LIP-WIDE, CHIPPED FRONT. FINE ROULETTING BAND MAINLY ROUND BACK AND R.H.S. CLAY-GREYISH, SPECKLED. LARGE FLAT SPUR, POINTING FORWARD. SOME IRON STAINS MAINLY R.H.S AND L.H.S. OF BOWL.

12. (3.12.82.).

C. 1660-80. S.B.D. 3 MM. DEEP GROOVE WITH TRACES OF ROULETTING MAINLY BACK AND L.H.S. OF BOWL LIP. CLAY-CREAMY WITH IRON STAINING. HEEL-ROUND. STEM LENGTH FROM BACK OF HEEL TO BREAK-36 MM.

13. (3.12.82.). QUEENHITHE.

C. 1660-80. S.B.D. 3.2 MM. CREAMY CLAY WITH BLUE/GREY STAINING. CHIP, FRONT OF LIP. HEEL-WELL-ROUNDED. STEM LENGTH FROM BACK OF HEEL TO BREAK-47.5 MM.

FIG. 2.

14. (3.1.83.) - PAULS WHARF.

C.1660-80 S.B.D. 3 MM. STEM FRAGMENT WITH STAMPED
HEEL - TW IN RELIEF WITH A HEART AND BEADED BORDER.

FIG. 3.

1. (17.12.82.) SOUTHWARK BRIDGE / DOWGATE.

C. 1660-80. L. TYPE 15. S.B.D. 3 MM. CLAY, SMOOTH, WHITE.

BOWL CAVITY, WHITE. FLATTENED SPUR TENDING TO POINT FORWARD. STEM LENGTH FROM BACK OF SPUR TO BREAK - 50.5 MM.

2. (20.9.82.)

C. 1660-80. L. TYPE 18. S.B.D. 3 MM. CREAMY-WHITE CLAY, POLISHED.

LIP - THICK. SOME ROULETTING ROUND BACK. HEEL - ROUND. STEM LENGTH FROM BACK OF HEEL TO BREAK - 41.5 MM.

3. (3.10.82.)

C. 1660-80. S.B.D. 3.2 MM. CLAY - CREAMY-WHITE.

LIP - GROOVED, MAINLY AT FRONT. CHIPPED AT BACK. FOOT - ROUND. STEM LENGTH FROM BACK OF FOOT TO BREAK - 67 MM.

4. (16.11.82.) - QUEENHITHE.

C. 1660-80. L. TYPE 18. S.B.D. 3 MM. CLAY - BUFF/WHITE MOTTLED.

TWO IRON STAINS L.H.S. ROULETTING BACK OF BOWL. STEM HAS TRACES OF IRON STAINING NEAR BREAK. FOOT - ROUND/OVAL. STEM LENGTH FROM BACK OF FOOT TO BREAK - 70 MM.

5. (14.1.83.) - QUEENHITHE.

C. 1660-80. S.B.D. 3 MM. GREYISH, CRUDELY MADE PIPE. ROULETTING R.H.S. OF LIP.

FIG. 3.

6. (22.3.83.) BROOK'S WHARF.

C. 1660-80. L. TYPE 15. S.B.D. 3 MM. BATTERED BOWL WITH LIP BROKEN, SMOKE-STAINS IN CAVITY, AND INCUSE W/D ON BACK. POSSIBLY WILLIAM DOUBTFIRE (1), 1671, OR PERHAPS WILLIAM DAVIES, 1641, ST. GILES IN FIELDS.

7. (14.4.83.) QUEENHITHE.

C. 1660-80. L. TYPE 13. S.B.D. 2.5 MM. SIMILAR EXAMPLE TO FIG. 2., NOS 4, 5, & 6 BUT WITH A DIFFERENT ROSE DESIGN.

8. (8.11.82.) PAUL'S WHARF.

C. 1660-80. S.B.D. 2.85 MM. PART OF BOWL WITH ROUND GAZE WITH CIRCULAR STAMP IN RELIEF: W/S-CORONET ABOVE. OSWALD TELLS US, (BAR 14), P. 44, THAT PIPES WITH CORONET OVER MARK COULD BE CHARACTERISTIC OF RIPON. INDEED, THIS EXAMPLE HAS SOME OF THE TYPICAL BULBOUS SHAPE OF A NORTHERN TYPE. HOWEVER, THIS STAMP ALSO BEARS A RESEMBLANCE TO MARKS ATTRIBUTED TO WILLIAM STERRIDGE (SEE BAR 63, P. 76, NO. 71. AND BAR 97, P. 132, NO. 29. SO PERHAPS THIS COULD BE A LATISH W. STERRIDGE PIPE.

9. (23.6.83.) QUEENHITHE

C. 1660-80. S.B.D. 3.5 MM. VERY SQUAT, BULBOUS BOWL, LIP CHIPPED FRONT, VERY LARGE, SQUARE BASE, SIMILAR TO THE 'YORKSHIRE BULBOUS' SHAPE, SEE BAR. I, P. 86.

FIG. 3.

10. (29.3.83) BROOK'S WHARF.

C. 1650+ S.B.D. 3MM. STEM FRAGMENT WITH ROULETTING. SMOOTH, SHINY FABRIC.

11. (26.7.83) TRIG LANE STAIRS.

C. 1660-80. L. TYPE 15. S.B.D. 3MM. GREYISH, ROUGH BOWL, NARROW MOUTH AND SMOKE STAINED CAVITY. ROULETTED LIP. INCUSE 'WD' ON BACK. BY SAME MAKER AS NO. 6.

12. (9.8.83) QUEENHITHE.

C. 1660-70. L. TYPE 15. S.B.D. 3.05 MM. A WELL SMOKED, DULL-CREAMY BOWL, ROULETTED AROUND LIP AND STEM. SMALL BULGE FRONT OF BOWL, SEEN IN PROFILE.

13. (8.9.83) QUEENHITHE.

C. 1670-80. L. TYPE 15. S.B.D. 3.00 MM. DISCOLOURED BOWL WITH F/W STAMP ON STEM. THREE PELLETS ABOVE AND BELOW LETTERS. A PELLET IN BETWEEN. OVAL CARTOUCHE. OUTER LINE DENTATED. SIMILAR PIPE WITH DIFFERENT F/W DIE ON NO. 40. P.133, BAR. 97. MAKER UNKNOWN.

14. (29.9.83) SOUTHWARK BRIDGE.

C. 1660-80. S.B.D. 2.75 MM. POLISHED STEM PIECE. VERY CLEAR I/C STAMP ON BASE WITH TOBACCO PLANT BETWEEN, INSIDE CIRCLE. SIMILAR OS. & ATK. 1969.

15. (10.8.84) QUEENHITHE (SOUTHWARK BRIDGE).

C. 1640? S.B.D. 3.00 MM. LIGHT GREY, MOULD DECORATED STEM: CIRCULAR SCALE PATTERN AND LEAVES ON SEAM. PERHAPS DUTCH.

16. (6.1.1987) SOUTHWARK BRIDGE.

C. 1660+ S.B.D. 3 MM. ROUND STEM. BREAK; SHINY, DISCOLOURED SURFACE; SV INCUSE ON STEM.

FIG. 4.

1. (29.3.83.) KENNET WHARF.

C. 1660-70. L. TYPE 13. S.B.D. 3 MM. AN INTERESTING DIE, PERHAPS FROM THE SAME MAKER WHO PRODUCED THE THREE TUDOR ROSE MARKS, SEE FIGS. 2 & 3; AND THOSE SHOWN IN LE CHEMINANT & ELKINS' ARTICLE (BAR 97), PASSIM. IN THIS EXAMPLE, THE TD IS IN NEGATIVE FORM, AS IT WERE AND OUTLINED BY THE SURROUNDING EMBELLISHMENTS.

2. (5.10.83.) KENNET WHARF.

C. 1660-80. L. TYPE 18. S.B.D. 26MM. OFF-WHITE; GROOVE BACK OF LIP. FRONT LIP BROKEN. SQUARISH BASE. STAMP BY THE TD MAKER, PERHAPS THE SAME MAKER OF NO. 1 ABOVE. cf. FIG. 2, NO. 5

3. (8.11.83.) KENNET WHARF.

C. 1660-80. L. TYPE 18. S.B.D. 2.75 MM. RTS AND PELLETS IN RELIEF. INVERTED HEART FRAME. OTHER DIES BY SAME MAKER, ILLUSTRATED BY OSWALD P. 85 (BAR 1975) AND ATKINSON P. 185 (MAKERS' MARKS ON CLAY TOBACCO PIPES FOUND IN LONDON. THE ARCHAEOLOGICAL NEWSLETTER, VOL. 7, NO. 8 1962.) COTTERALL, P. 66, NO 28 (OLD PEWTER - IT'S MAKERS AND MARKS), VERIFIES A HUSBAND AND WIFE TRI-LETTERED MARK ON A PEWTERER'S TOKEN OF 1669.

4. (3.2.84.) KENNET WHARF.

C. 1660-80. L. TYPE 13. S.B.D. 2.98 MM. SMALL, ROUND MOUTH. SMOKED INTERIOR. SMOOTH, OFF-WHITE FABRIC. BASE SLIGHTLY SPAYED, IRREGULAR EDGES. T/D STAMP. TWO CROWNS ABOVE LETTERS. TWO PELLETS IN BETWEEN. FIVE PETALOID TUDOR ROSE BELOW WITH SEPALS. HEART SHAPED SURROUND. cf. NO. 2 ABOVE, NO'S 4 & 5, FIG. 2.

5. (3.2.84.) QUEENHITHE.

C. 1660-80. L. TYPE 15. S.B.D. 3.1 MM. PITTED, BROKEN, GREY COLOURED BOWL, BLACKENED CAVITY, ROULETTING APPARENT AT FRONT LIP. SPUR MISSING. WD INCISE ON BACK, DEEPLY IMPRESSED. IDENTICAL QUEENHITHE, TRIG LANE STAIRS: FIG. 3, 6 (BROOK'S WHARF/QUEENHITHE); 11. PERHAPS WILLIAM DOUBTFIRE, 1671 FATHER.

FIG. 4.

6. (10.10.85) QUEENHITHE/SOUTHWARK BRIDGE.
C. 1660. S.B.D. 2.75. GREYISH SURFACE; THINNISH STEM; WAISTED, FORWARD-POINTING BOWL; LARGE, SPLAYED BASE; T D MARK IN RELIEF; DUPLICATE MARK: FIG. 3, NO. 7. VERY MUCH A WEST COUNTRY STYLE BOWL.
7. (10.10.85) QUEENHITHE.
C. 1650+? S.B.D. 3-3.6 MM. THICK, RATHER ASYMMETRICAL STEM PIECE; OFF WHITE IN COLOUR; ROULETTE BAND, PERHAPS FRESHLY APPLIED WITH A TOOL.
8. (28.10.85) SOUTHWARK BRIDGE/DONGATE.
C. 1660. S.B.D. 2 MM. POLISHED, SMOKED BOWL; BOWL STAMP IN RELIEF: I/I WITH TOBACCO PLANT BETWEEN LETTERS; CIRCLE SURROUND. DUPLICATE IN BAR 97, P. 133.
9. (27.11.85) QUEENHITHE/SOUTHWARK BRIDGE.
C. 1660 S.B.D. 3.2 MM. BURNISHED, GREY STEM; SPLAYED BASE WITH BADLY STRUCK T D DIE. SEE NO. 6 ABOVE FOR A POSSIBLE COMPARISON.
10. (27.11.85) QUEENHITHE/BULL WHARF AREA.
C. 1640? S.B.D. 3 MM. BEAUTIFULLY ENGRAVED OR PUNCHED DESIGN EMBOSSED ON THIS STEM PIECE WITH 'HALF-MOON' BRACKETS, PELLETS, FLEUR-DE-LYS IN MIRROR IMAGE, STARS (8 POINT) INSIDE ZIG-ZAGS; ALMOST COMPLETELY ENCRUSTED THIS STEM! DUTCH?
11. (3.6.1986)
C. 1660 S.B.D. 2.5 MM. 'TRI'-ROULETTE STEM; ROUND STEM-BREAK. PURPOSE UNKNOWN.
12. (1.12.1986) PAUL'S WHARF.
C. 1660. S.B.D. 2.6 MM. SMOOTH SURFACE. DUPLICATE, NO. 6.
13. (16.12.1986).
C. 1660-80. S.B.D. 3 MM. SMOKED CAVITY. ROULETTE STEM. CF. NO. 7.

FIG. 4.

14. (14.9.1987) BROOK'S WHARF.

C. 1660-80. S.B.D. 2.75 MM. WORN, IRON STAINED; R^TS BASE MARK. SEE NO. 3 ABOVE.

15. (26.9.88) PAUL'S WHARF.

C. 1660-80. S.B.D. 3 MM. BLEMISHED L.H.S. 'WD' INCUSE. CF NO. 5.

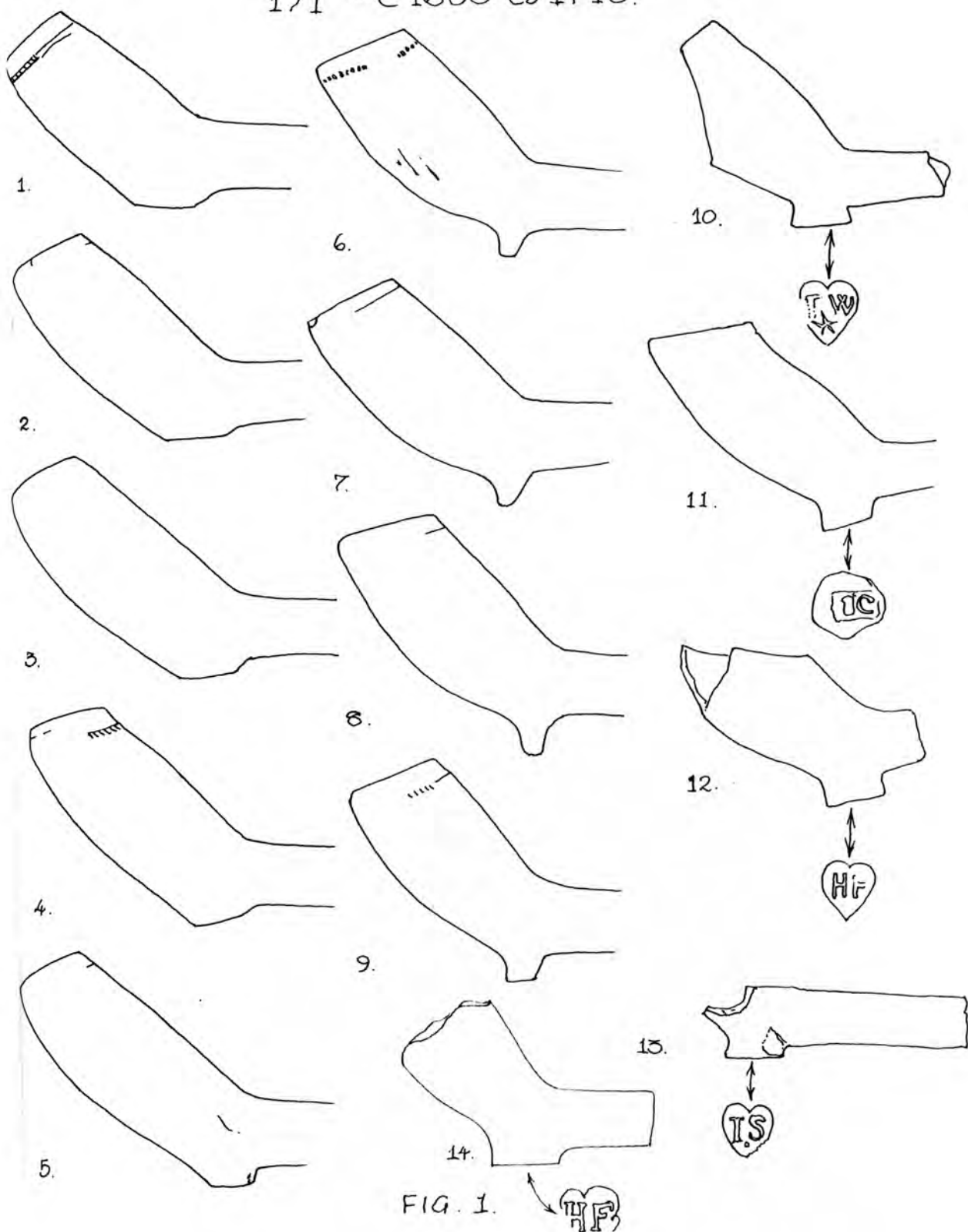
16. (1989).

C. 1660-80. S.B.D. 2.75 MM. DUPLICATE NO 14.

BLACKFRIARS to DOWGATE (N. BANK.)

R. THAMES.

1/1 - C1680 to 1710.



BLACKFRIARS to DOWGATE (N. BANK.)

R. THAMES.

1/1 - C.1680 to 1710.

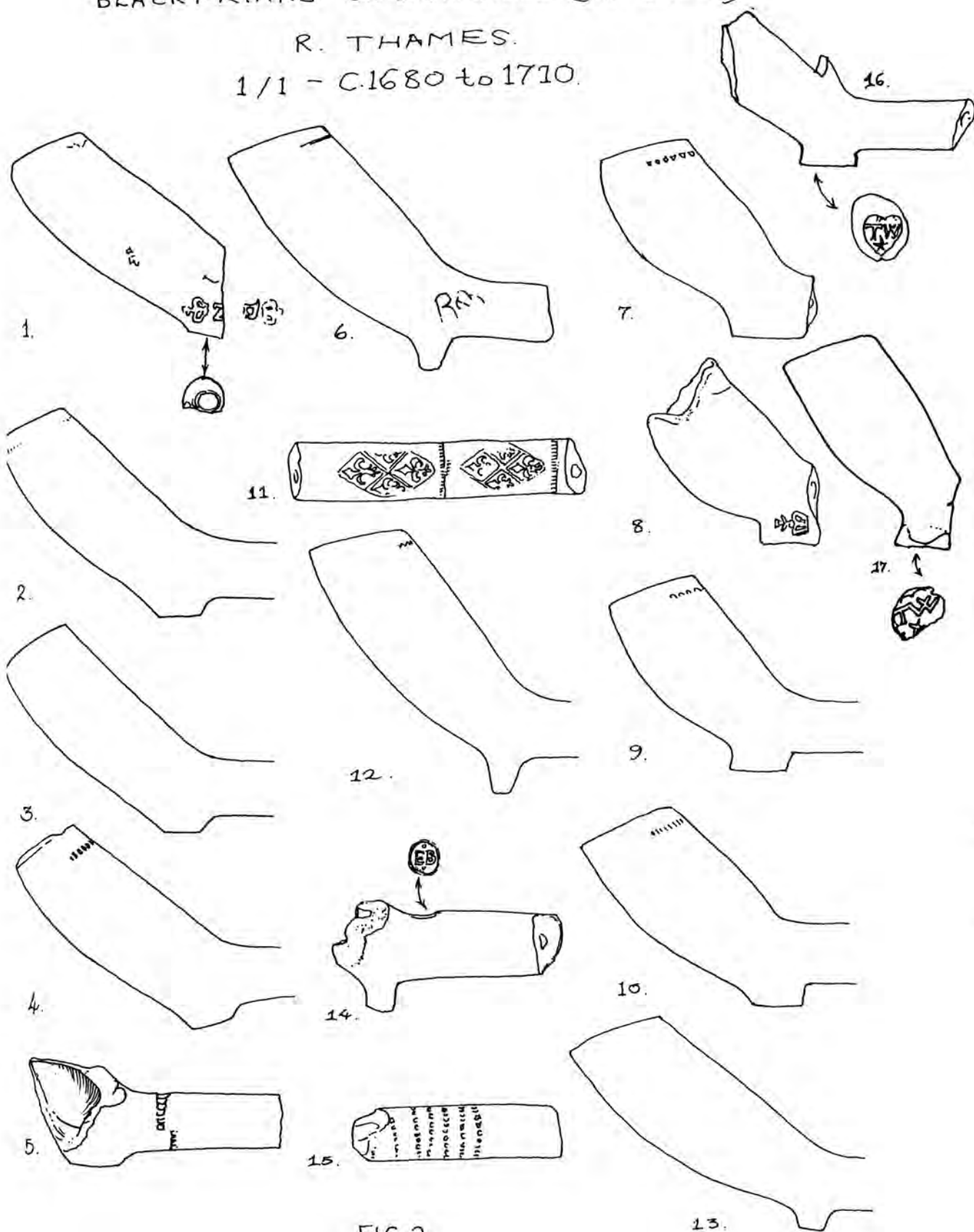
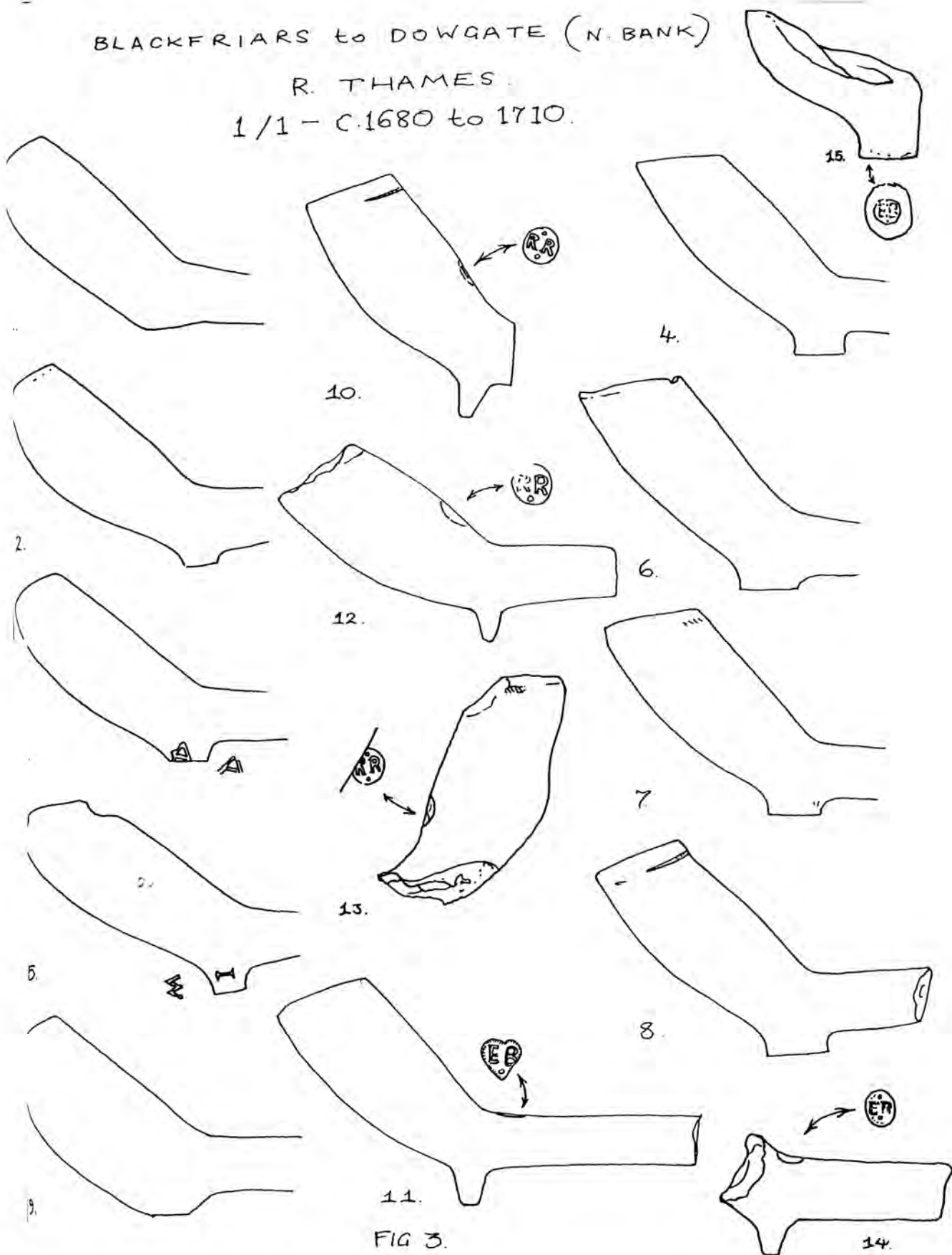


FIG 2.

BLACKFRIARS to DOWGATE (N. BANK)

R. THAMES.

1/1 - C.1680 to 1710.



BLACKFRIARS to DOWGATE (N. BANK)

R. THAMES.

1/1 - C.1680 to 1710

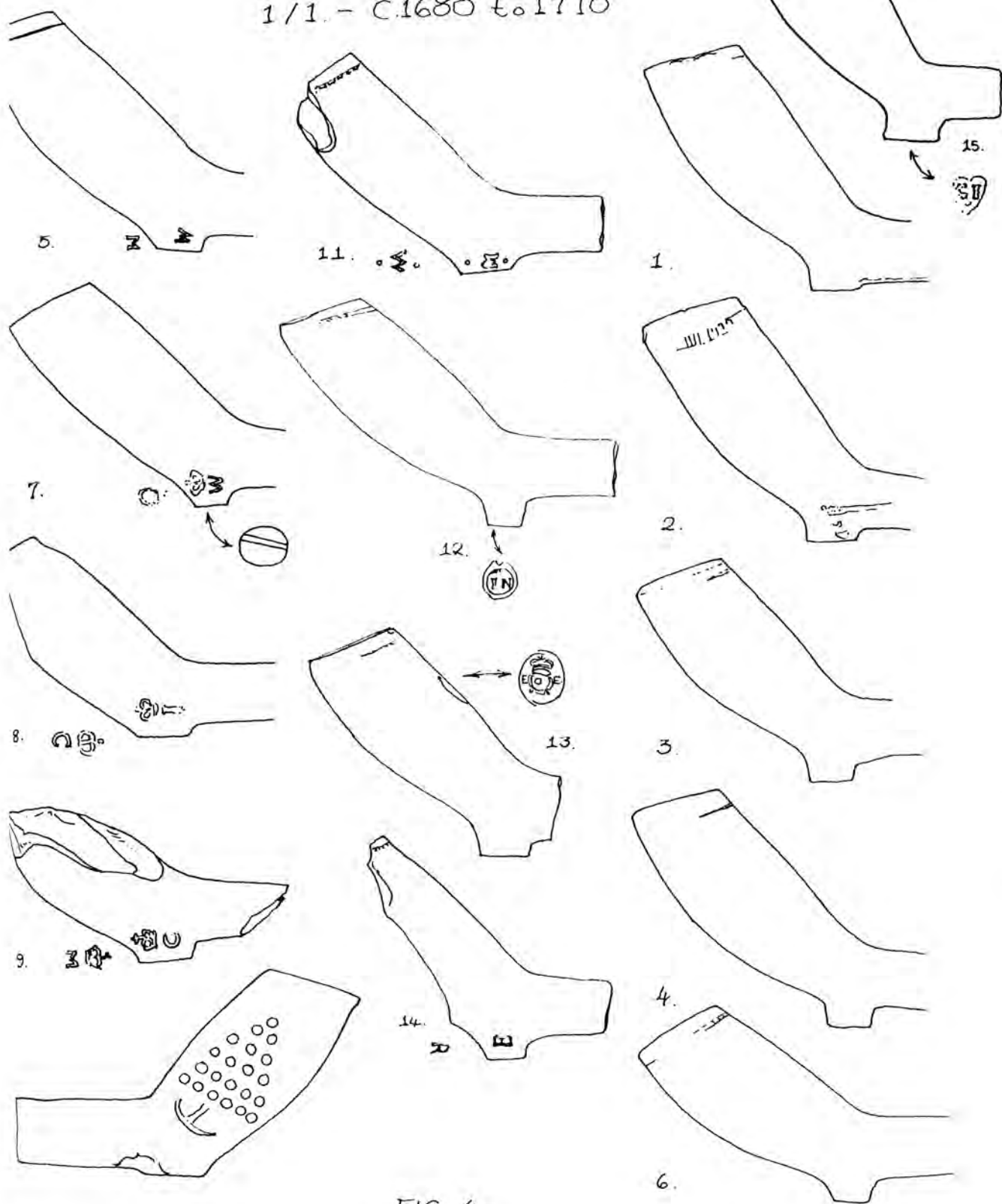


FIG. 4.

1/1 - C.1680 to 1710

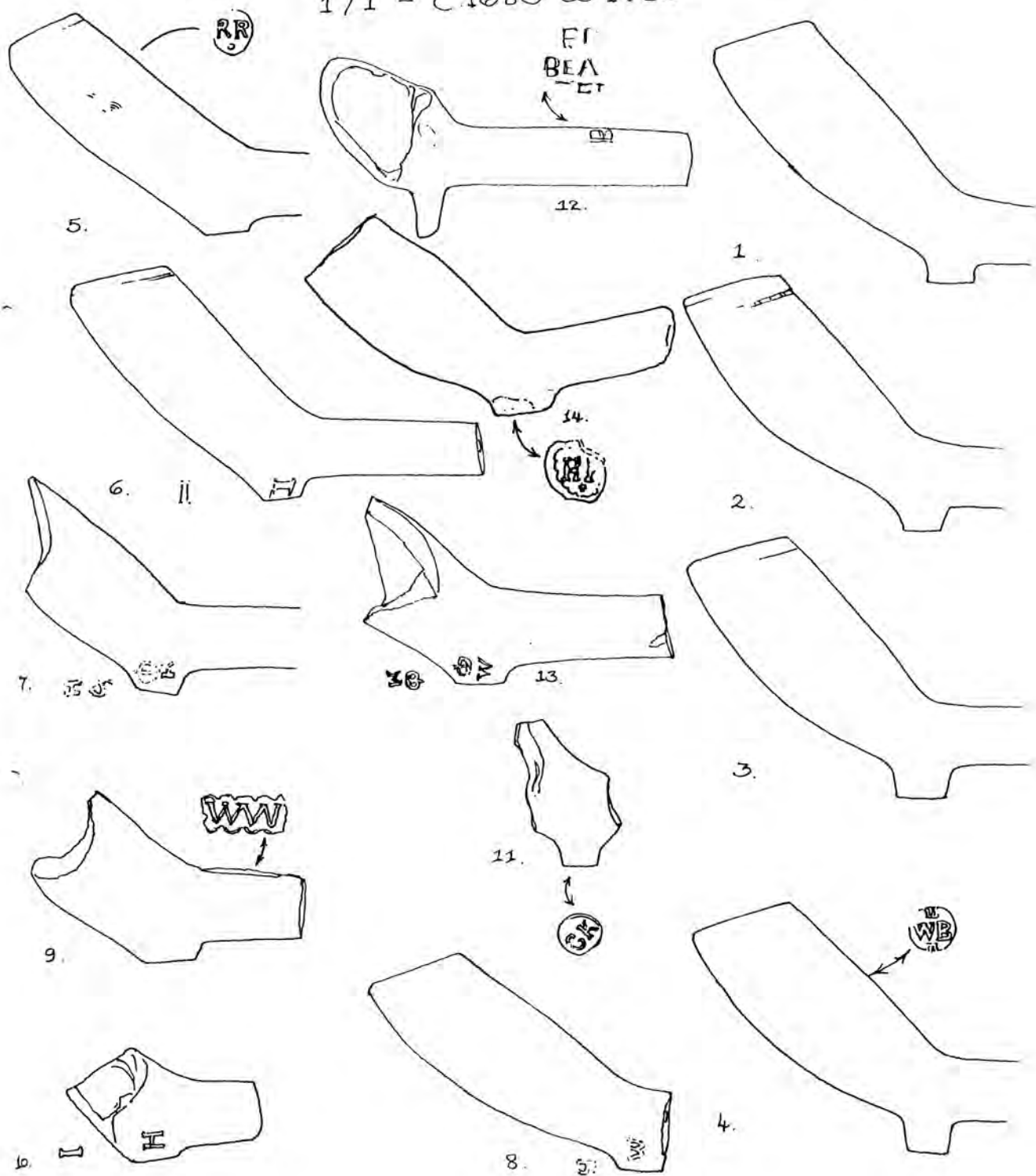
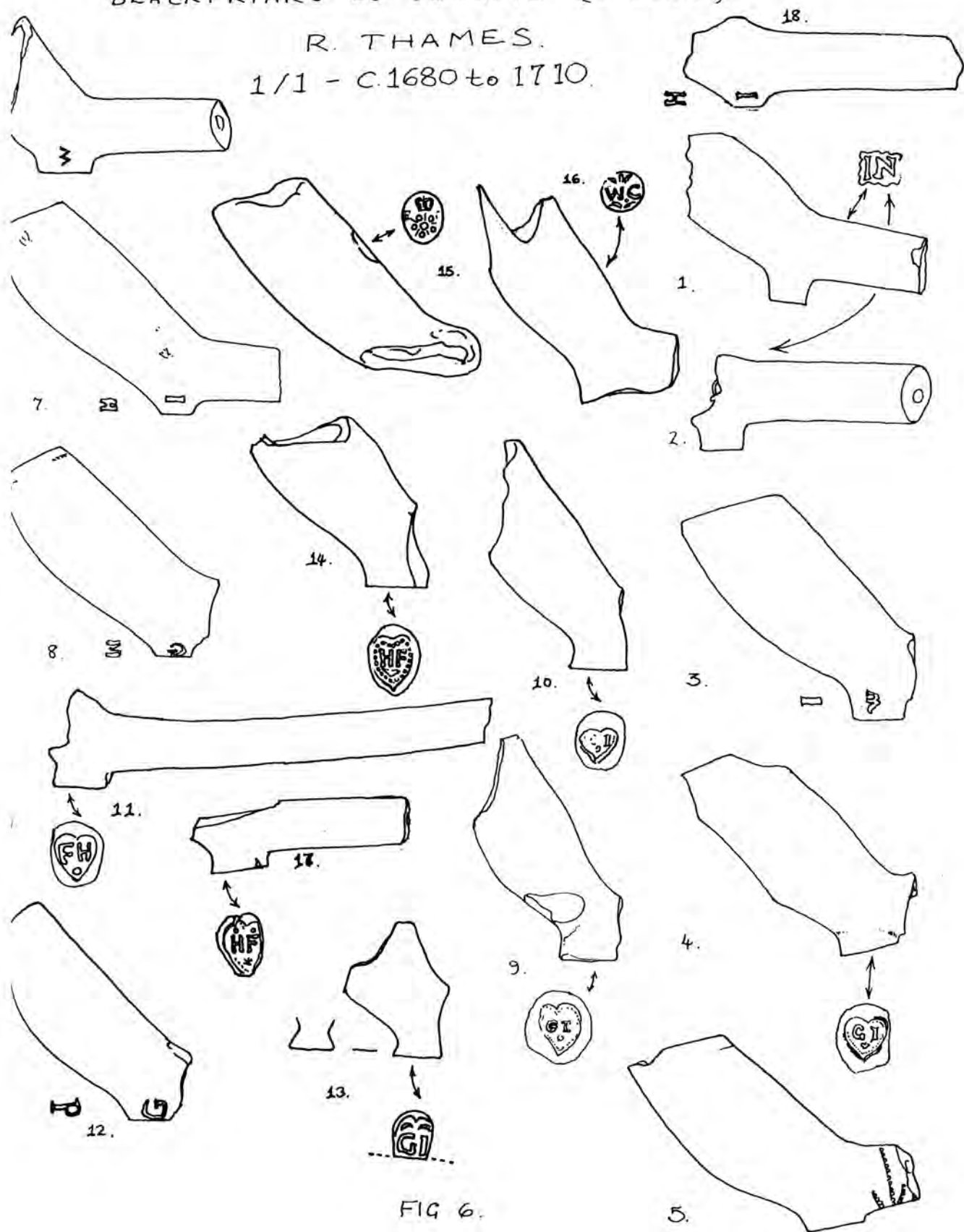


FIG. 5.

BLACKFRIARS TO DOWGATE (N. BANK.)

R. THAMES.

1/1 - C.1680 to 1710.



BLACKFRIARS to DOWGATE (N. BANK.)

R. THAMES.

1/1 - C. 1680 to 1710.

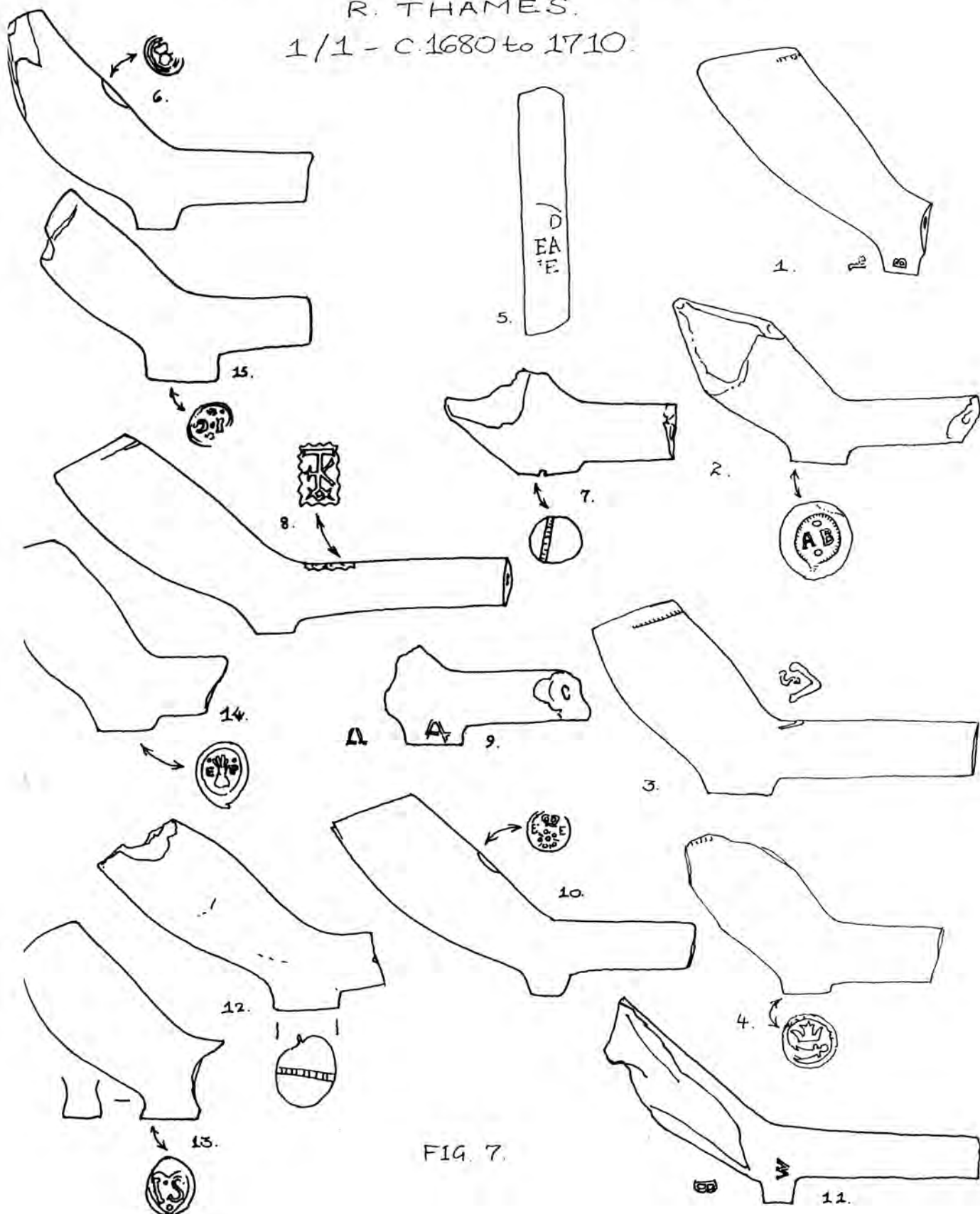


FIG. 7.

FIG. 1.

6. (13.10.82.)

C. 1690-1710. L. TYPE 19. S.B.D. 3.3 mm. LIGHT BUFF CLAY, WITH SPECKLED FRONT SIDE OF BOWL. ROULETTING BACK AND FRONT OF LIP. ROUND-BASED SPUR, TENDING TO CURL FORWARD.

7. (16.11.82.) - QUEENHATHE.

C. 1690-1710. L. TYPE 19. S.B.D. 3.0 mm. WHITISH CLAY. ROULETTING MARK BACK OF BOWL LIP. INSIDE LIP RIM, SMOKE STAINED. MOULD LINE PRONOUNCED, FRONT OF BOWL. POINTED SPUR TENDING TO POINT FORWARD. STEM LENGTH FROM BACK OF SPUR TO BREAK - 79 mm.

8. (10.10.82.)

C. 1690-1710. L. TYPE 19. S.B.D. 2.75 mm. CLAY SWIRLING WITH FAINT BROWN. A BLUE/GREY MARK BACK OF BOWL. THE LIP IS THICK. A LONG - UPRIGHT SPUR - FLATTENED.

9. (3.12.82.) - QUEENHATHE.

C. 1680. L. TYPE 19. S.B.D. 3 mm. BLOTCHED CLAY SURFACE. LIP-CHIPPED. ROULETTING ON BACK LIP OF BOWL. SPUR TENDING TO POINT FORWARD AND FLATTENED.

FIG. 1.

1. (24.9.82.)

C. 1680. L. TYPE 18. S.B.D. 2.75 MM. WHITE CLAY. ROULETTING BAND
ROUND LIP. INSIDE OF LIP SMOKE STAINED. ROUND HEEL. STEM LENGTH
FROM BACK OF HEEL TO STEM BREAK 64 MM.

2. (6.10.82.)

C. 1680. S.B.D. 2.75 MM. WHITE CLAY WITH IRON
STAINING L.H.S. OF BOWL AND STEM. HEEL - OVAL. STEM LENGTH
FROM BACK OF HEEL TO BREAK - 85 MM.

3. (20.9.82.)

C. 1680-1710. S.B.D. 3 MM. SMOOTH WHITE/GREY CLAY WITH
BROWNISH BLOTCHES MAINLY L.H.S. SMOKE-STAINED INSIDE BOWL CAVITY.
HEEL - OVAL. STEM LENGTH FROM BACK OF HEEL TO BREAK - 95 MM.

4. (16.11.82.) - QUEENHITHE.

C. 1680-1710. S.B.D. 2.5 MM. SMOOTH WHITE/GREY CLAY.
SOME ROULETTING BACK OF BOWL LIP. RIM OF LIP SMOKE-STAINED.
'DROPPED' HEEL - ROUND.

5. (20.9.82.)

C. 1680-1710. S.B.D. 2.5 MM. IRON STAINS BACK OF BOWL.
SMALL ROUND HEEL.

FIG 1.

10. (16.10.82.)

C. 1690-1710.

S.B.D. 2.5 MM. BOWL BROKEN FRONT/R.H.S.

GREYISH CLAY STAINED BLUE/RUST L.H.S. MOUTH SLOPES FORWARD.

HEEL - SPLAYED AND FLAT - BASE STAMPED WITH - ? I or L W WITH
A MULLET BENEATH IN RELIEF.

11. (3.12.82.) PAULS WHARF

C. 1690-1710.

S.B.D. 2.6 MM. LIP CHIPPED R.H.S.

CURVED BOWL WITH MOUTH PARALLEL TO STEM. GREYISH CLAY, SPECKLED L.H.S.,
R.H.S. IRON STAINS. BASE - SPLAYED, SLOPING DOWN, AND FROM R.H.S. TO L.H.S.
STAMP IN RELIEF - I C WITHIN A SMALL RECTANGULAR SHAPE.

12. (10.10.82.) BLACKFRIARS/PAULS WHARF.

C. 1690-1710.

S.B.D. 2.6 MM. TOP OF BOWL BROKEN OFF.

IRONS STAINS AND BLUE/GREY BLOTCHES. BASE - SPLAYED - STAMPED
IN RELIEF - H FOR P (?) WITHIN HEART. SEE 14 BELOW (12.12.1986).

13. (21.11.82.) - QUEENHITHE.

C. 1690-1710.

S.B.D. 2.5 MM. SPLAYED HEEL. I S IN

RELIEF WITHIN HEART. PELLET BELOW LETTERS.

14. (7.12.1986) QUEENHITHE/SOUTHWARK BRIDGE.

C. 1680-1710. S.B.D. 3 MM. MOTTLED BOWL. HF RELIEF BOWL STAMP. SEE 12. ABOVE. Cf.

ATKINSON 1962, 'MAKERS' MARKS'... ETC. FIG. 1.; 1965, FIG. 4, NO. 58. PROBABLY PIPE DATE, LAST QUARTER OF 17TH C.

FIG. 2.

1. (20.9.82.)

C. 1680-1710. S.B.D. 2.5 MM. EARLY MOULDED MARKED BOWL.
POSSIBLY N AND B WITH CROWNS ABOVE. CIRCLE SHAPE IN RELIEF
ON BASE.

2. (6.10.82.)

C. 1680-1710 S.B.D. 3 MM. FAINT ROULETTING LINE ROUND
LIP. PURPLISH/BROWN STAINS UNDERSIDE OF BOWL AND HEEL. STEM
LENGTH FROM BACK OF HEEL TO BREAK - 75.5 MM.

3. (10.10.82.)

C. 1680-1710. L. TYPE 22. S.B.D. 2.5 MM. CREAMY CLAY. HEEL-ROUND.
STEM LENGTH FROM BACK OF HEEL TO BREAK - 55.5 MM.

4. (16.11.82.) - QUEENHITHE.

C. 1680-1710. L. TYPE 22. S.B.D. 2.5 MM. SMOOTH, WHITE/CREAMY CLAY,
SEAM LINE APPARENT. ROULETTING BACK OF BOWL LIP. SMOKE-STAINED INSIDE
HP CAVITY. IRON STAINS WHERE STEM BREAKS. HEEL-OVAL.

5. (8.11.82.) - SOUTHWARK BRIDGE.

C. 1680-1710. S.B.D. 2.9 MM. BOWL AND STEM FRAGMENT
WITH ROULETTING ROUND STEM.

FIG. 2.

6. (26.11.82.) - QUEENHITHE

C. 1690-1710. L. TYPE 19. S.B.D. 3 MM. SMOKE STAINS INSIDE LIP.

LONG BOWL AND SPUR. L.H.S. ABOVE SPUR, THE LETTER 'R' AND ? WITH
FADED INK OF RED/BROWN COLOUR. THE SMOKER'S INITIALS ?

7. (13.10.82.) - QUEENHITHE.

C. 1680-1700. S.B.D. 2.75 MM. SMOOTH, OFF-WHITE CLAY.

INNER RIM OF LIP SMOKE-STAINED. CHIP OUT OF BOWL L.H.S.

LARGE SPLAYED FLAT FOOT - HEART-SHAPED BASE. ROULETTE BACK
OF BOWL LIP.

8. (13.10.82.)

C. 1680-1700. S.B.D. 2.5 MM. TOP OF BOWL BROKEN OFF.

IRON STAINS L.H.S. AND BACK. ROUND, SLIGHTLY CONCAVE HEEL WITH
CROWNS L.H.S. AND R.H.S.

9. (20.9.82.)

C. 1680-1700. S.B.D. 2.5 MM. WHITE CLAY. ROULETTE

BACK OF BOWL LIP. FLAY, SPLAYED HEEL - BASE - ROUND/OVAL. STEM LENGTH
FROM BACK OF HEEL TO BREAK - 51.5 MM.

FIG. 2.

10. (AUTUMN 1982)

C. 1680-1710.

S.B.D. 3 MM. GREY SURFACE POSSIBLY

PITTED BY ACIDS. ROULETTING BACK OF BOWL LIP, HEEL WITH FRONT UPWARD
SLOPE. OVAL/ROUND BASE.

11. (8.11.82.) NR. SOUTHWARK BRIDGE.

C. LATE 17th.

S.B.D. 3 MM. WHITE CLAY. SHINY.

STAMPS OF FLEUR-DE-LYS WITHIN DIAMOND SHAPES. FINE-LINED ROULETTING
BANDS BETWEEN. DUTCH STYLE.

12. (14.2.83.) QUEENHITHE.

C. 1690-1710. L-TYPE 19. S.B.D. 2.75 MM. VERY LARGE BOWL, CRUSTED WITH DEPOSITS.
CLAY STAINED GREY. DEEP ROULETTING BACK OF BOWL. LONG, UPRIGHT SPUR, WITH MOULD LINE ON BASE.

13. (31.1.83.) SOUTHWARK BRIDGE.

C. 1680-1710 L-TYPE 20. S.B.D. 2.9 MM. SMOOTH, SHINY, IRON-STAINED BOWL WITH
SMALL, ROUND SPUR.

14. (29.3.83.) BROOK'S WHARF.

C. 1680-1710. L-TYPE 19. S.B.D. 2.5 MM. STEM/SPUR FRAGMENT WITH
CIRCULAR STAMP WITH LETTERS IN RELIEF: E/B. PELLETS ABOVE AND BELOW
LETTERS. Cf. BAR 97, P. 284, NO'S 11 & 13. SEE ALSO P. 203.

FIG. 2.

15. (JUNE/JULY, 1984.)

c. 1680-1700. S.B.D. 3 MM. STEM PIECE WITH SEPARATELY RULETTED LINES NOT EXTENDING AROUND THE WHOLE STEM. ROUND STEM BREAKS. SOME IRON STAINS.

16. (26.9.88.) PAUL'S WHARF.

c. 1690-1710. S.B.D. 2.5 MM. CLAY DISCOLOURED. BURNISHED. SPLAYED BASE. DITTO FIG. 1, NO. 10.

17. (8.3.1989) QUEENHITHE (SOUTHWARK BRIDGE).

c. 1690-1710. S.B.D. 2.75 MM. SPLAYED, CHIPPED BASE. T/W IN RELIEF. cf. 16. ABOVE. OSWALD (13.3.1989)

COMMENTS: 'THE TW HAS DUPLICATES FROM THE THAMES IN MUS. LOND. (GREEN COLL) & QUEENHITHE (ELKINS COLL).'

FIG. 3.

1. (16.11.82.) - QUEENHITHE.

C. 1680-1710.

S.B.D. 2.5 mm. WHITE/CREAMY CLAY, SMOOTH AND POLISHED. LIP CHIPPED R.H.S. SMOKE STAINS INSIDE OF LIP CAVITY.

LIP-WIDE, FUNNELLING TO OVAL FOOT. STEM LENGTH FROM BACK OF FOOT TO BREAK - 47.5 mm.

2. (21.11.82.) - SOUTHWARK BRIDGE (DOWGATE SIDE).

C. 1680-1710.

S.B.D. 3 mm. CREAMY/BUFF PIPE WITH A FLATTENED MOUTH FRONT, SMALL CHIP L.H.S. OF LIP. DARK BLOTCHES MIDDLE/FRONT OF BOWL. HEEL - ROUND.

3. (13.10.82.) - QUEENHITHE.

C. 1680-1710.

S.B.D. 2.75 mm. PIPE WITH SIMILAR FLATTENED BOWL TO NUMBER 2. MARKED ON THE SPUR WITH 'A' R.H.S. AND L.H.S. ONE OF THE EARLIEST 'MOULDED' MARKS ON A PIPE.

4. (8.11.82.) - QUEENHITHE.

C. 1690-1710.

L. TYPE. 21. S.B.D. 2.8 mm. WHITISH CLAY - NO TRACE OF ROULETTEING ROUND LIP. 'SMOKE-COIL' STAINS IN CAVITY, SPLAYED OVAL/ROUND HEEL, SLOPING LEFT TO RIGHT.

FIG 3.

5. (3.12.82.) - QUEENHITHE.

C. 1680-1710. L. TYPE 22. S.B.D. 2.2 MM. BOWL BROKEN, OFF-WHITE, SHINY CLAY. LETTERS ON SIDES OF SPUR - I W.

6. (20.9.82.)

C. 1680-1710 L. TYPE 21. S.B.D. 2.5 MM. GREY/BUFF CLAY. LIP CHIPPED. BOWL CAVITY SMOKE STAINED. HEEL - SPLAYED, ROUND BASE WITH MOULD LINE.

7. (13.10.82.)

C. 1680-1710. L. TYPE 21. S.B.D. 2.8 MM. GREY/MUSHROOM CLAY.

MOULD LINE FRONT OF BOWL. HEEL - SPLAYED, FLAT BASE. STEM LENGTH FROM BACK OF HEEL TO BREAK - 67 MM.

8. (3.12.82.) PAULS WHARF.

C. 1680-1710. S.B.D. 2.75 MM. CLAY - PALE BUFF, BLUE/GREY TINGES. FINE ROULETTE BACK OF BOWL. LARGE, SPLAYED HEEL, FLAT BASE.

9. (31.1.83.) QUEENHITHE.

C. 1680-1710. S.B.D. 2.75 MM. LARGE, CYLINDRICAL BOWL; MEDIUM-THICK; SMOKE-STAINS IN BOWL CAVITY; FRONT MOULD-LINE VISIBLE; ROUNDED-SQUARE HEEL. STEM LENGTH FROM BACK OF HEEL TO BREAK, 97 MM.

FIG. 3.

10. (26.7.83.) QUEENHITHE.

C. 1690-1710. L. TYPE 19. S.B.D. 2.75 MM. DIRTY GREY COLOURED BOWL, THIN ROULETTE BACK OF LIP. POINTED SPUR. RELIEF STAMP ON BACK 'R/R' WITHIN CIRCLE, A PELLET ABOVE AND BELOW LETTERS. POSSIBLY RICHARD ROMAINE, PROB. (1) & (2), 1696, 1704 F. 1763 OLD ST. OR RUBIN REEVES, 1696. Cf. BAR 97, P. 282, NO. 6 & P. 286, NO. 5 FOR HEART SHAPED R/R STAMPS. VERY POSSIBLY EARLIER THAN THE ABOVE, AND MAY OR MAY NOT BE BY THE SAME MAKER.

11. (8.9.83.) QUEENHITH.

C. 1690-1710. S.B.D. 2.9 MM. MUSHROOM FABRIC. E/B AND PELLET WITH A HEART SHAPE ON STEM. SIMILAR TO NO. 65, FIG. 5. A.N.L. 1965, MAKERS MARKS ON CLAY TOBACCO PIPES FOUND IN LONDON, PART TWO. D.R. ATKINSON, POSSIBLY EDWARD BANSBOROUGH, 1663. CHARTER. ASS. T.P.CO. PROBABLY SAME MAKER AS FIG. 2. NO. 14.

12. (24.2.85.) QUEENHITHE.

C. 1690-1710. L. TYPE 19. S.B.D. 2.75 MM. GREYISH, PITTED SURFACE, CHIPPED LIP; ROUND STEM-BREAK; BLURRED R/R BACKSTAMP. SEE NO. 10. ABOVE.

13. (18.9.1987) QUEENHITHE DOCK.

C. 1690-1710. L. TYPE 19. S.B.D. 2.5 (APPROX.) BOWL FRAGMENT; DITTO ABOVE.

14. (18.9.1987) QUEENHITHE DOCK.

C. 1680-1710. S.B.D. 2.75 MM. E.B. MAKER. SEE FIG. 2 NO. 14 ABOVE.

15. (1989)

C. 1680-1710. S.B.D. 2.5 MM. VERY WORN. E.B. MAKER Cf. 14 ABOVE.

FIG. 4.

1. (3. 12. 82.) - QUEENHITHE.

C. 1680-1710.

S.B.D. 2.6 MM. CLAY - PALE BUFF.

THICK LIP-RIM. FOOT - JOINED BY PRONOUNCED MOULD-LINE TO STEM.

2. (24. 9. 82.)

C. 1680-1710.

S.B.D. 3 MM. LIGHT-CREAM CLAY. THICK LIP-RIM.

BOWL - CAVITY, UNSTAINED. SOME ROULETTING MARKS L.H.S. BOWL LIP.

HEEL - OVAL/ROUND, FLAT BASE.

3. (24. 9. 82.)

C. 1680-1710. L-TYPE L. 20. S.B.D. 3 MM. LIGHT-CREAM CLAY. THICK LIP-RIM.

MOULD LINE FRONT OF BOWL. SMOKE-STAINED INSIDE CAVITY LIP. HEEL - OVAL, BASE - FLAT.

4. (6. 10. 82.)

C. 1680-1710. L-TYPE 20. S.B.D. 2.9 MM. WHITISH CLAY. SMOKE STAINED INSIDE CAVITY. ROULETTING LINE BACK OF BOWL LIP. HEEL BASE - IRREGULAR ROUND. SMOOTH, SHINY SURFACE.

5. (14. 2. 83.) QUEENHITHE.

C. 1680-1710. L-TYPE 22. S.B.D. 2.9 MM. EARLY MOULDED-SPUR PIPE. MAKER, W/M. POSSIBLY WILLIAM MAMBY (I) 1681-96 (WORKING.).

FIG. 4.

6. (14.2.83.) QUEENHITHE

C. 1680-1710.

S.B.D. 2.95. SMOOTH, SHINY, CREAMY-FAWN PIPE; SMOKE-STAINS

ROUND LIP AND TOP OF INSIDE CAVITY. TRACE OF ROULETTEING BACK OF BOWL LIP.

SQUARE HEEL; STEM LENGTH FROM BACK OF HEEL TO BREAK, 99.8 MM.

7. (13.5.83.) QUEENHITHE.

C. 1680-1710. L. TYPE 22. S.B.D. 2.1 MM. CREAMY COLOURED BOWL - THIN TO MEDIUM THICK. MARKS SIDE OF BASE: L.H.S. - W BELOW CROWN. R.H.S. - C OR G? POSSIBLY WILLIAM CHESTERMAN, 1696-1710 (AMONG OTHERS.) OR WILLIAM GOLDING (1), 1712. GROOVED BASE.

8. (13.5.83.) TRIG LANE STAIRS / BLACKFRIARS.

C. 1680-1710. L. TYPE 22. S.B.D. 2.2 MM. CREAMY / BUFF BOWL, R.H.S. BROKEN. MARKED: L.H.S. I BELOW CROWN; R.H.S. C BELOW CROWN. SEVERAL POSSIBILITIES.

9. (23.6.83.) TRIG LANE STAIRS / BLACKFRIARS.

C. 1680-1710. L. TYPE 22. S.B.D. 2.9 MM. BROKEN BOWL, OVAL BASE. SOME IRON-STAINS. MAKER'S INITIALS: C / M BELOW CROWNS. OR POSSIBLY S/M. NOT CITED BY OSWALD (1975 BAR) FOR THIS PERIOD.

FIG. 4.

10. (7.10.83) SOUTHWARK BRIDGE.

C. 1680-90. L. TYPE 18. S.B.D. 3.1 MM. BATTERED 'MULBERRY' PIPE, R.H.S. HEEL MISSING; L.H.S. DEFACED. GREYISH CLAY. RATHER CRUDE MOULDING. POSSIBLY ORIGINATING FROM THE MIDLANDS WHERE THEY ARE MORE COMMONLY DISTRIBUTED. PERHAPS BROUGHT INTO LONDON BY THE COASTAL TRADE. IT IS UNCERTAIN WHAT THE DESIGN REPRESENTS.

11. (3.6.1986) SOUTHWARK BRIDGE.

C. 1680-1710. L. TYPE 22. BUFF SURFACE - SLIGHTLY IRON TINGED ON BACK; THICKISH BOWL; OVAL BASE WITH 'SCRATCH' LINES; M/W MAKER; UNUSUAL MARK WITH TWO PELLETS WITH EACH LETTER. PERHAPS MATHSW WARNER (DOMESTIC STATE PAPERS, OS. 1975); OR MARK WEBB, 1696, SIGNED OATH OF ALLEGIANCE AS A JOURNEYMAN.

12. (9.12.1986) BROOK'S WHARF.

C. 1680-1710. L. TYPE 20. S.B.D. 2.75 MM. MILLING BACK OF LIP; IN RELIEF BASE STAMP, OF ATKINSON (MAKERS' MARKS.. ETC) 1962, FIG. 2, NO. 32. SEE ALSO, FIG. 6. NO'S 1 & 2 BELOW.

13. (9.12.1986) BROOK'S WHARF.

C. 1680-1710. S.B.D. 3.5 MM. MILLED LIP ON BACK; WIDE STEM BORE FOR PERIOD; EE ROSE & CROWN STAMP IN RELIEF ON BACK. ANOTHER, SIMILAR DIE FROM WESTMINSTER (SEE CATALOGUE). SEE ALSO BAR 97 P. 137, NO. 64. SIMILAR STYLE ON PEWTER MARKS FOR THE PERIOD.

14. (9.12.1986)

C. 1680-1710. L. TYPE 22. S.B.D. 2.9 MM. ROUND STEM-BREAK; BLACK STAIN ON BACK; E/R MAKER. EDWARD RANDALL BEING ONE POSSIBLE, 1719 APP. ROLLS. (OS. 1975)

15. (1989) PUDDLEDORCK.

C. 1680-1710 S.B.D. 2.8 MM ROUND MOUTH; WATER WORN; PINCHED HEEL; GI IN RELIEF Cf. FIG 6 NO 9.

FIG. 5.

1. (16.11.82) - QUEENHITHE.

C. 1680-1710. L. TYPE 20. S.B.D. 2.5 MM. WHITE CLAY. THICK LIP-RIM
SMALL CRACK BACK OF BOWL LIP. HEEL - OVAL. BASE - FLAT. STEM LENGTH
FROM BACK OF HEEL TO BREAK - 52 MM.

2. (3.1.83.) - PAULS WHARF.

C. 1680-1710. L. TYPE 20. S.B.D. 3 MM. WHITISH CLAY. ROULETTING LINE
BACK OF BOWL LIP. HEEL WITH SMALL ROUND BASE.

3. (3.1.83.) - PAULS WHARF.

C. 1680-1710. L. TYPE 20. S.B.D. 3 MM. DULL, GREY/BUFF CLAY. ROULETTING LINE
ROUND BOWL LIP - MAINLY BACK, R.H.S. LARGE FLAT HEEL - OVAL/ROUND.
STEM LENGTH FROM BACK OF HEEL TO BREAK - 80 MM.

4. (26.11.82.) - PAULS WHARF.

C. 1680-1710. L. TYPE 20. S.B.D. 3 MM. CLAY BLOTCHED - BLUE/BLACK
L.H.S. LIP EDGE, STEM. RUST STAINING. HEEL - CYLINDRICAL, FLAT BASE.
STAMP, BACK OF BOWL - W B IN RELIEF, IN CIRCLE.

5. (NOVEMBER 1983). DOWGATE.

C. 1680-1710. L. TYPE 22. S.B.D. 2.6 MM. SMOOTH, DISCOLOURED SURFACE. R.H.S. LIP
BROKEN. OVAL BASE. RR WITH PELLET IN RELIEF ON BACK (LOWER THAN INDICATED BY SKETCH.)
cf. FIG. 3. NO. 10. SEE ALSO ATKINSON, MAKERS' MARKS ... 1962, P. 185.

FIG. 5.

6. (20.1.84.) SOUTHWARK BRIDGE/DOWGATE.

C. 1680-1710. L. 22. S.B.D. 3 MM. IRON STAINED AND GREY DAPPLED BOWL, GROOVE BACK OF RIM, CHIP R.H.S. RIM. SMOKED INTERIOR. CURIOUS MOULDED LETTERS? SIDES OF BASE. PERHAPS I/I? JOHN JONES (I) 1696 O.A. (J)? DUPLICATE, BATTERSEA, 1680-1710 FIG. 1, NO. 1.

7. (17.2.84.) QUEENHITHE.

C. 1680-1710. L. 22. S.B.D. 2.8 MM. IRON STAINED, BROKEN PIPE, BASE SLOPING UP FROM STEM PROFILE. THICK, ROUND STEM. R/H? BELOW CROWNS ON SIDES OF BASE, A NUMBER OF POSSIBLE MAKERS.

8. (17.2.84.) QUEENHITHE.

C. 1680-1710. L. 20. PALE, FAWNY/BUFF BOWL, CLEAN INSIDE, OVAL BASE. S.B.D. 2.55 MM. MAKER PERHAPS W/B. CF. NO. 4. MANY POSSIBLE MAKERS.

9. (13.6.84.) BROOK'S WHARF.

C. 1680-1710. L. TYPE 22. S.B.D. 3 MM. THICK, GREY/WHITE BOWL FRAGMENT, OVAL, OBLIQUE BASE. STEM STAMP, TO BE READ FROM R.H.S. OF STEM: WW WITHIN INDENTED OBLONG. A NUMBER OF POSSIBLES: WILLIAM WANTON, 1664-82, FINSBURY PL. LISTS F. WARDEN TP. CO. PRESENTS J. CHAPMAN FOR FREEDOM; WILLIAM WHITAKER, 1682, MARRIAGE, ST. MARTINS IN FIELDS; WILLIAM WHITFIELD, 1691-96 F. O.A. SEE BAR 97, P. 139, NO. 72, FOR COMPLETE BOWL.

10. (8.10.84.)

C. 1680-1710. L. TYPE 22. S.B.D. 2.65 MM. CLEAN, OFF WHITE CLAY; CHIPPED BASE; H/I ON SIDES. VERY PROBABLY HENRY ICUM, 1689 F.

11. (2.7.85.) BROOK'S WHARF.

C. 1680-1710. S.B.D. 2.5 MM. POLISHED SURFACE; CYLINDRICAL BASE; C/R OR C/K MAKER. RELIEF. UNCERTAIN. OSWALD REMARKS (IN LIT. 1985) CHARLES RIGGS I or II 1649-81 IS ONE POSSIBILITY, ARC. NEWS NO. 2. STOKES ON TRENT MUS.

FIG. 5.

12. (9.12.1986) QUEENHITHE/SOUTHWARK BRIDGE.

C. 1700. S.B.D. 2 MM. ROUND STEM BREAK; INCISE STEM STAMP OF 'ED BEASTEN' PLACE OF WORK NOT YET KNOWN (SEE BAR 1980, P. 354.

13. (2.1.1987). QUEENHITHE AREA.

C. 1680-1700. S.B.D. 2.5 MM. WHITE CLAY; W/M MAKER. WILLIAM MANBY. PROB. (1) FL. 1681-1696+. (OS.)

14. (1989) PAUL'S WHARF/POODLEDOK

C. 1680-1730. S.B.D. 3 MM. WATERWORK, GREY; HF? IN RELIEF ON BASE. ENGRAINED BORDER of FIG 6; 17

FIG. 6.

1. (3.1.83) PAULS WHARF/BROKEN WHARF.
C. 1680-1710. L. TYPE 20. S.B.D. 2.9 MM. WHITISH CLAY, IRON STAINS R.H.S.
BOWL BROKEN OFF. CYLINDRICAL HEEL, FLAT BASE. STAMP TOP OF STEM NEXT
TO BACK OF BOWL - LN IN RELIEF WITHIN WAYY-SQUARE OUTLINE.

2. (18.10.82.) - BROKEN WHARK.
C. 1680-1710. L. TYPE 20. S.B.D. 2.9 MM. IDENTICAL TO NUMBER ONE.

3. (3.12.82.) QUEENHITHE.
C. 1690-1710. S.B.D. 2.3 MM. CLAY - SMOOTH, SHINY, IRON
STAINING. HEEL - SPLAYED. L.H.S. 'W' R.H.S. 'I'. MOULD LINE ON BASE.
A TRANSITIONAL PIPE, HAVING SOME OF THE CHARACTERISTICS OF THE L.25.

4. (29.3.83.) BROOK'S WHARF.
C. 1690-1710. L. TYPE 21. S.B.D. 2.6 MM. PART OF BOWL WITH SPLAYED,
SQUARE HEEL HEART-SHAPED STAMP: G/I IN RELIEF WITH POSSIBLY A
CROWN BENEATH. CLAY - SPECKLED, LIGHT BROWNY MUSHROOM COLOUR.
POSSIBLY GEORGE JONES (1) 1696 O.A. OR GEORGE JONES (2) 1704.

5. (13.5.83.) QUEENHITHE.
C. 1690-1710. L. TYPE 31. S.B.D. 2.98 MM. BOWL WITH CHIPPED LIP, L.H.S.; CHIPPED
ROUND BASE AND ROULETTING AROUND STEM.

FIG. 6.

G. (24.2.85)

C. 1690-1710. L-TYPE 21. S.B.D. 2.8 MM. THICK BOWL; MEDIUM/THICK STEM; IRREGULARLY OVAL BASE; FAIRLY POLISHED SURFACE. MAKER W/D. PERHAPS WILLIAM DOUBTFIRE (2) 1696-1720 A.O. (J). F. OR WILLIAM DELAP, 1730. F.

T. (24.2.85.)

C. 1680-1710. L-TYPE 22. S.B.D. 2.5 MM. SMOOTH SURFACE; OVAL SPUR BASE; MAKER I/H. MANY POSSIBLE MAKERS.

S. (21.3.85)

C. 1680-1710. L-TYPE 22. S.B.D. 2.6 MM. IRON TINGED BOWL; ROUND, EVEN-MEDIUM THICK MOUTH; ROULETTED LIP; G/M ON SIDES OF HEEL; NOT LISTED, BUT CONSIDER MOSES G66, 1681-96. F.O.A. VINTRY. S. MARTINS.

D. (2.7.85.) BROOK'S WHARF.

C. 1690-1710. L-TYPE 21. S.B.D. 3 MM; GREY-MOTTLED FABRIC; VENT L.H.S.; G I IN RELIEF WITHIN HEART & PELLST. SEE NO. 4. GEORGE JONGS (1) 1696. O.A.; GEORGE JONGS (2) ? 1704. F. PERHAPS ONE OF THESE MAKERS.

10. (MAY 1987) QUEENHITHE AREA.

C. 1690-1710. L-TYPE 21. S.B.D. 3.1 MM. BLACKENED BOWL; BLURRED STAMP OF ABOVE.

11. (1987) PAUL'S WHARF.

C. 1680+. S.B.D. 2.5 MM. GREY SURFACE. F/H IN RELIEF WITHIN DEPRESTED HEART. MAKER UNCERTAIN

12. (MAY, 1987)

C. 1680-1710. S.B.D. 2.5 MM. SMOKED CAVITY; IRON STAINING FRONT AND LOWER BACK; G/P MAKER. GEORGE POWELL 1696. O.A. (J); GEORGE PORTER 1696 O.A. (J) ARE POSSIBLES.

FIG. 6.

13. (AUG. 1987) PAUL'S WHARF.

C. 1680-1710. S.B.D. 2.5 MM. GREYISH SURFACE; SPLAYED BASE WITH G1 MARK IN RELIEF. A CRUDE STAMP. PROBABLY FROM SAME WORKSHOP AS NO'S. 4, 9. & 10.

14. (AUG. 1987)

C. 1680-1710. S.B.D. 2.9 MM. SMOOKED CAVITY; SPLAYED BASE; SMOOTH SURFACE; HF IN RELIEF BEADED HEART SURROUND. Cf. FIG. 1. NO. 12 ABOVE. ALSO FIG. 2. NO. 14.

15. (10.9.1987).

C. 1680-1710. BADLY DAMAGED BOWL; BLURRED MARK OF TUDOR ROSE & CROWN ON BACK IN RELIEF. SEVERAL DIFFERENT DIES OF THIS MARK KNOWN. Cf. FIG. 4, NO. 13 ABOVE. SIMILAR FROM WESTMINSTER WITH E/E ALSO LETTERED ON BASE.

16. (10.9.1987)

C. 1680-1710. PAUL'S WHARF AREA. S.B.D. 2.8 MM. BASE DEFACED; WC BACKSTAMP IN RELIEF ATKINSON SHOWS ANOTHER; 'MAKERS' MARKS' ETC P. 251, NO. 76.

17. (24.12.1987).

C. 1680-1710. S.B.D. 2.75 MM. HF IN RELIEF, STAR BELOW; TWO PELLETS ABOVE; Cf. NO. 14. AT LEAST THREE DIES ARE KNOWN FROM THIS MAKER.

18. (1988) CITY FORESHORE.

C. 1680-1710. S.B.D. 2.9 MM. 1/H MAKER. SEE 7 & Cf. NO 10 FIG 5.

FIG. 7.

1. (9.8.83.) BROOK'S WHARF.
C. 1680-1710. L. TYPE 20. S.B.D. 2.7MM. POLISHED, DISCOLOURED BOWL, ROULETTING BACK OF LIP. FLAT, OVULAR BASE, LETTERED B/H? MAKER NOT CITED BY OSWALD (1975 BAR). AN EARLY MOULDED MARK.
2. (12/8/83) SOUTHWARK BRIDGE/DOWGATE.
C. 1680-1710. L. TYPE 21. S.B.D. 2.75 MM. BUFF COLOURED, BROKEN BOWN, ROUND BASE WITH A/B RELIEF STAMP. TWO PELLETS ABOVE AND BELOW LETTERS. POSSIBLY ABRAHAM BOYES (2?) C. 1680-1710, A TRUNKMAKER (AND PROBABLY A PIPE MAKER) IN YORK, THERE ARE MANY DIFFERENT A/B STAMPS AND THESE PIPES ARE FOUND WIDELY IN ENGLAND.
3. (7.10.83.) VINTRY WHARF.
C. 1680. L. TYPE 18. S.B.D. 3MM. CLEAN, CREAMY CLAY, ROULETTING BACK OF LIP. 'S/V' MARK INCUSE BEHIND BOWL AT STEM JOIN. MAKER UNKNOWN.
4. (29.3.83.) BROOK'S WHARF.
C. 1675-90. S.B.D. 2.98 MM. WHITE, POLISHED BOWL, THICK ROUND STEM, SMOKED CAVITY, ROULETTED RIM L.H.S. ROUND, SHALLOW BASE. MARK OF CROWN OR CORONET ABOVE SCIMITAR, IN RELIEF. DUCO DESCRIBES THIS PIPE AS BEING TRANSITIONAL, SEE BAR 106 ii, P. 259, NO. 226, ASCRIBING IT TO GOUDA WITH THE ABOVE DATES.
5. (24.10.83.) BROOK'S WHARF.
C. 1700-10. S.B.D. 2.3MM. STEM PIECE, ROUND, INCUSE LETTERS OF MAKER'S STAMP APPARENTLY OF SIMILAR TYPE TO GEALES OF SURREY, FROM ABOUT THE SAME PERIOD, SEE BAR 97, P. 247, BUT THE LETTERS DO NOT SEEM TO FIT THIS MAKER. THE MOST PROBABLE ATTRIBUTION CAN BE MADE TO ED BEASTON C. 1700, PLACE OF WORK NOT YET KNOWN, BUT EXAMPLES FOUND IN BRINKWORTH, WILTS. SEE BAR 78, 'DISTRIBUTION OF CLAY TOBACCO PIPES ROUND THEIR PLACE OF MANUFACTURE.' HUGH OAK-RIND. THIS PAPER IS BASICALLY CONCERNED WITH POSTULATING THAT PIPES WERE NOT TRANSPORTED MORE THAN ABOUT 20 MILES AROUND THEIR PLACE OF MANUFACTURE, EXCLUDING LONDON AND BRISTOL! A CONTRASTING CASE CAN BE SHOWN FROM THE ABOVE EXAMPLE. PROBABLY THE RESULT OF TRADE.

FIG. 7.

6. (10.9.1987). QUEENHITHE DOCK.
 C. 1680-1710. S.B.D. 2.25 MM. SMOKED; SMALL VENT R.H.S; IMPRESSED TUDOR ROSE WITH CROWN IN CIRCLE, IN RELIEF. cf FIG. 6, NO 15 ABOVE.
7. (10.9.1987).
 C. 1680+ S.B.D. 3 MM. DIAGONAL MILLING ACROSS BASE. WORKER'S IDENTIFICATION MARK?
8. (10.9.1987). PAUL'S WHARF/BLACKFRIARS BRIDGE.
 C. 1680-1710. L-TYPE 20. S.B.D. 2.5 MM. DISCOLOURED SURFACE; 'MERCHANTS' MARK OF TK? IN RELIEF. A NEAR-COMPLETE DRAWING OF THIS MARK IS SHOWN BY ATKINSON & OSWALD (1969) P. 182, NO. 28. ATKINSON & OS. DATE THIS TO 1700-40 & SUGGESTS THOMAS KENTON, 1692, FREE.
9. (10.9.1987)
 C. 1680-1710. L-TYPE 21. S.B.D. 2.5 MM. DISCOLOURED; OVAL BASE; ROUND STEM-BREAK. CRUDE A/A ON SIDES. cf. 'MAKERS' MKS. ON CLAY PIPES....' D. ATKINSON 1965 P. 253.
10. (14.9.1987). SOUTHWARK BRIDGE.
 C. 1680-1710. S.B.D. 3 MM. SMOKED CAVITY; LIP CHIPPED FRONT; ROUND STEM-BREAK. SEE FIG. 4 NO 13. AT LEAST THREE DIFFERENT DIES ARE KNOWN OF THIS E/E ROSE & CROWN MARK.
11. (14.9.1987)
 C. 1680-1710. S.B.D. 2.5 MM. OVAL STEM-BREAK; ROUND SPUR BASE; W/B MAKER. cf. FIG. 5 NO. 4 ABOVE.
12. (14.9.1987) QUEENHITHE DOCK.
 C. 1680-1710. S.B.D. 2.5 MM. SMOKED. ROULETTE BASE. NONE (TO BE SEEN) AROUND LIP. BATCH MARK? cf. 7.
13. (8.10.1987) QUEENHITHE DOCK.
 C. 1680-1710. S.B.D. 3 x 2.4 MM. SMOKE GOWL; SPLAYED BASE; I/S IN RELIEF WITH PELLETS; HEART SURROUND; SEE B.A.R. 146(ii) P. 366 FOR OTHER DIES. SIMILAR WESTMINSTER; CUSTOM'S HSE FORESHORE.

FIG. 7.

14. (10.9.1987) QUEENHITHE/SOUTHWARK BRIDGE.

C. 1680-1700. S.B.D. 3.3 MM. WATER-ROLLED PIPE BUT SHOWS SIGNS OF A 'GLOSSY' FINISH. E/P WITH GAUNTLETT + TWO PELLETS IN RELIEF ON BASE. A. OSWALD WRITES:- (6.10.1987) 'YR. EP. OCCURS WITH A GAUNTLETT AT SHAFTESBURY.... YRS. DIFFERS ONLY IN THE [DOTS] EACH SIDE OF GAUNTLETT.... PIPE IS W. COUNTRY C 1680-1700. NO TRACEABLE MAKER YET.'

D. ATKINSON WRITES: 'YR. PIPE + MARK APPEAR TO BELONG TO THE SAME SERIES AS THOSE DESCRIBED IN MY PAPER ON PIPES FOUND AT SHAFTESBURY IN DORSET PROCEEDINGS SOME YRS. AGO. ... THEY APPEAR TO BE A LOCAL PRODUCT..... (29th OCT. 1987)..

MAREK LEWCUN WRITES: 'CLAY TOB. PIPES FOUND IN SHAFTESBURY BY D. ATKINSON IN DORSET N. H & ARCH. SOC. VOL. 91, 1969 P. 206-215 SHOWS TWO STAMPS OF EP WITHOUT A GAUNTLETT.'

15. (1989) PAUL'S WHARF.

C. 1680? + S.B.D. 3.1 MM. OSWALD (PERS.COM, 13.3.1989) NOTES: 'THE IC LOOKS BROSELY TO ME, I ENCLOSE A TRACING OF PIPES IN THE BM, MARKS NEAR YOURS BUT NOT DUPLICATES.' THE STAMP IS PLACED 'UPSIDE DOWN' IN RELATION TO NORMAL STAMPING PLACINGS.