



THE NATIONAL PIPE ARCHIVE

Registered Charity Number 1043065

Accession Number: LIVNP 2014.01.192.W1 (Part 1 of 2 AW - IW)

Description: Clay tobacco pipe mark index, compiled by Adrian Oswald.

Comments: These are marks with a W surname initial. Arranged alphabetically by Surname (i.e. AW, BW, CW, DW, etc.). Each section starts with a typed list giving details, including provenance for each piece, which have an identifying number that is a simple sequence of numbers (i.e. 1, 2, 3, etc.) occasionally with sub-lists, if there are more than one example (i.e. 1a, 1b, 1c, 2a, 2b, etc.).

Key Words: Clay pipe; heel mark; Oswald;

Any images in this PDF must not be lent, copied to another party, sold or reproduced in any way without prior permission from the National Pipe Archive and the copyright owner, if applicable. Reproduction or publication in any medium is expressly forbidden without written authorisation and should include an acknowledgement worded 'Courtesy of the National Pipe Archive' and quoting the relevant accession number.

W
(1)

1. Broseley.

- a. Type 1By. Thursfield Coll, British Mus. Atkinson Coll.
- b¹ Thursfield Coll. 1c Broseley (Atkinson Coll)

2. Grantchester, Cambs.)ARNER /)DGE c 1840-50.

3. London. British Mus, Bragge Coll. c 1650. incuse

4. Type probably as 3, Queenhithe, Atkinson Coll. incuse 4a Southwark Bridge, Atkinson Coll

5. Queenhithe, Elkins Coll, c 1690. 5a Dublin Castle

6. Putney, Cheminant Coll. Webb req.

(1)A

7. Wolf and Bak⁶⁶. c 162-1850-80. also stem at Bow (Atkinson).

8. Lawrence Coll, Stem WADDINGTON/WALWORTH relief in mould. - double centenary pipe n.b. Charlotte Waddington E.St. Walworth 1836.

8 Bis, Tower Bridge (Tatton Coll)

(1)B

9 a. Stoney Stratford.

b. From 3 miles S.W. Aylesbury c 1720.

10 Winchester excavations c 1750-70

11 WHO?EMMA both sides. Incuse. Highworth, Wilts per Dr. Patton.

12 Stem. Downton, Wilts. - incuse.

(1)C

13. Type 3g. c 1640-60. Taunton.

14. All Plymouth

b. 2 xamples one black. 7/64

c " 7/64

e 4 "

g. Polished 1976 excavations.

Date range 1640-60.

15. All Port Royal. c, with W on the base Mayes excavations 1680-1740 and Jamestown Structures 27, 28. 1675-1700

d. Don yatt excavations

Also. WILLIAMS/BROSELEY Type 3a relief along stem.

WARRE))LASTON. Incuse Walsall Moat excavations.

WAIN/STOKE ON TRENT. c 1880-1910, Hammond Coll.

WILLIA)/SURREY. c 19. stem probably,

W on type 10G. Bath and Bristol

Waldie & Co. S.Ontario.

h. Barnstaple (Atkinson Coll)
J Dublin Castle (Dunmurry Tower)



1



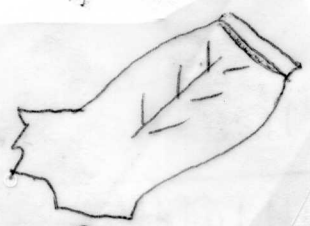
10

2

WILLIAMS
BROSELEY

c 1840-50
Relief of any stone
At Stone Hall

19c



23

W incuse, base small + 10
nr Southwark Bridge.

Type 052

a

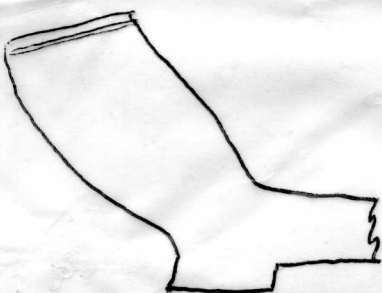


b



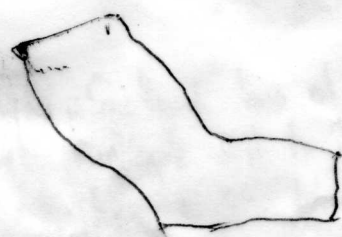
a

4



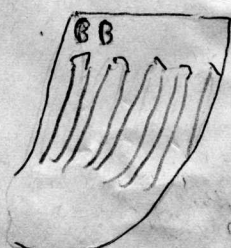
Queenhithe
Elms Coll
says xviii on
incuse W

5



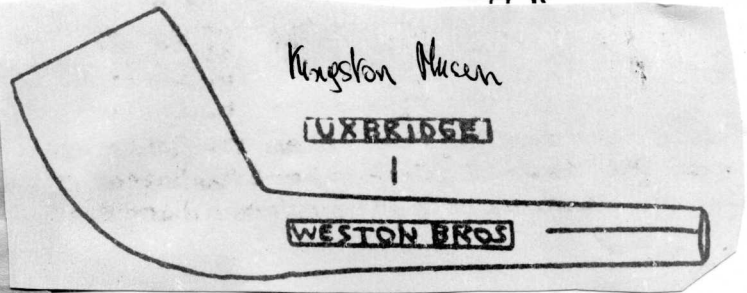
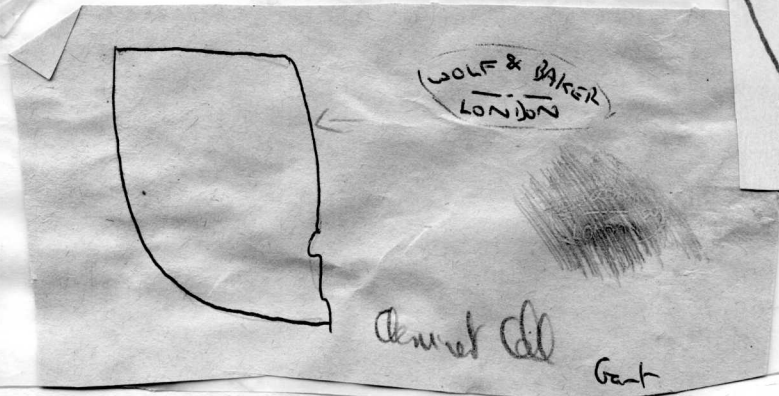
Daken Coll
Det over.

5a

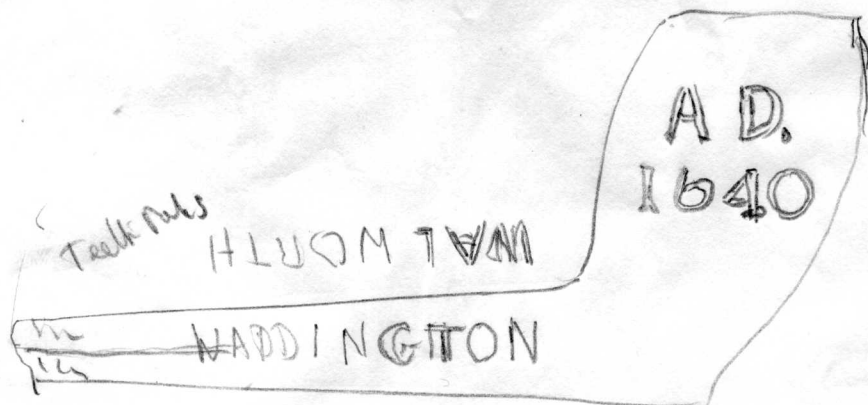


6

Usual reeded type. WEBB around top. of back
? Putney.
Queenhithe Coll



7

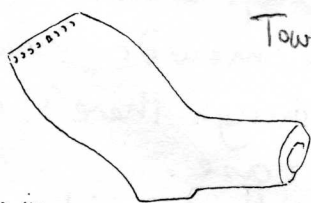


Lawrence Coll

8

1667 Wm Waddington - Southwick born at. Jax.
 1730 John Waddington cuplayer oft to John Ward 3-3
 1836 Charlotte Waddington. E. St. Walworth
 1846-97. Thos Waddington - Green
 1861-1921 " " York.

for
John Tatham



S.O.D. 3.1 MM

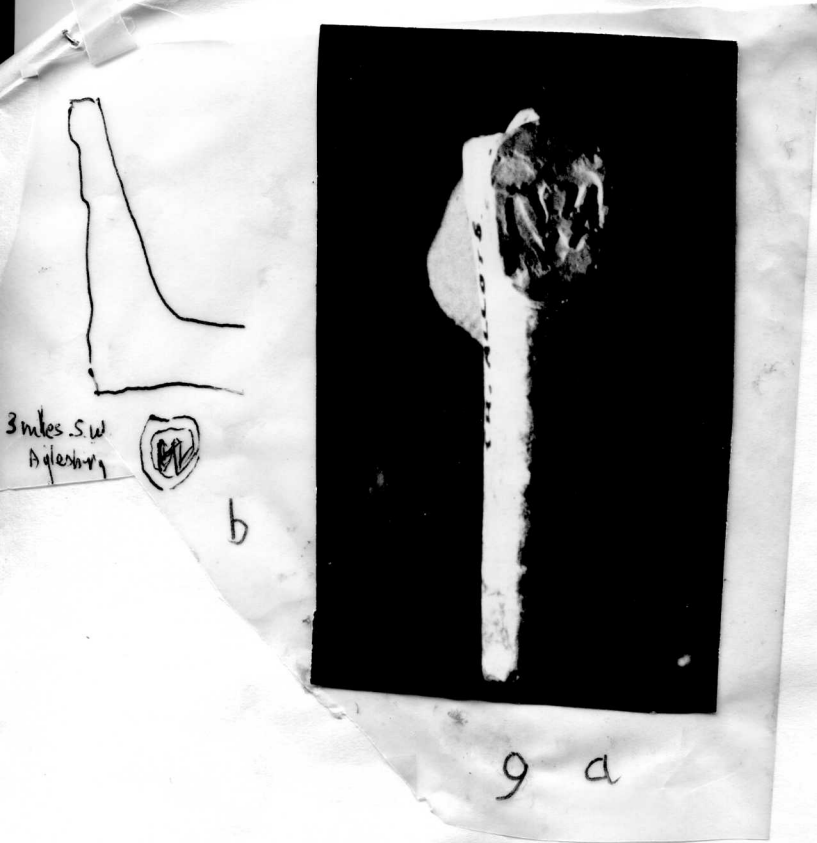
actual position of stamp in
 relation to stem axis.
 Relief.



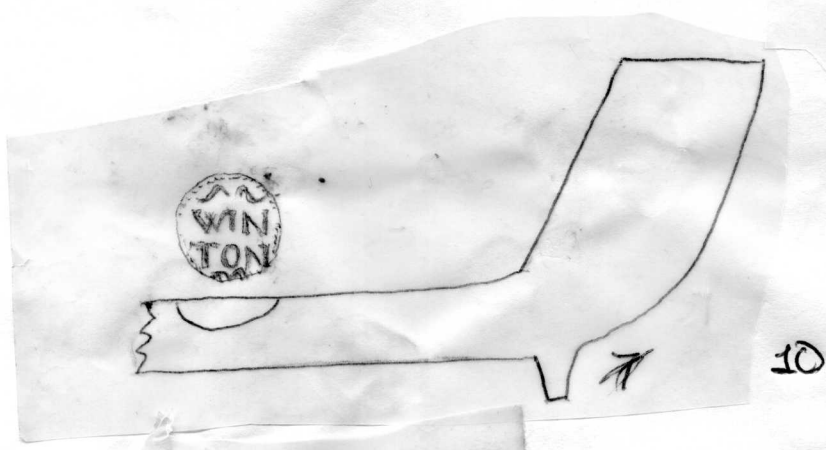
1 : 1 1/2

8 Bis

Have you come across this one, (from
 Tower Bridge) c 1620-40? I see Le Chem.



g a



10

Highworth, Wills
Dr. D. Palkon -
WHO-EMMA - Bolk and
muse.

11

(W) storm - Dora -
Do

12

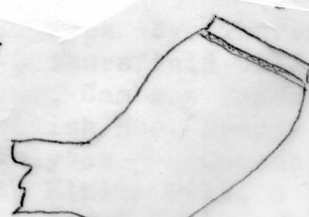
(1C)



13



a



b



c



Smooth
amp polished
3/64



Plymouth
1976

g



d



e

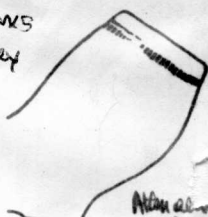


f

Hegans
Survey

h

g



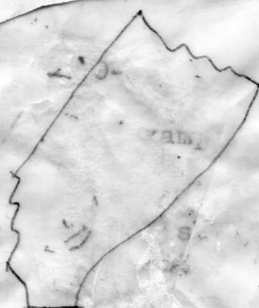
Alman
Cell
Banshope

3

5

14

14



a

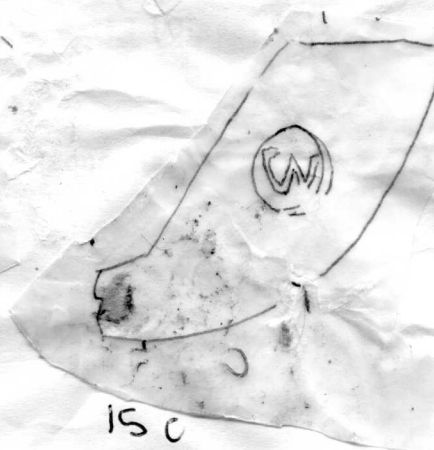
See V



b

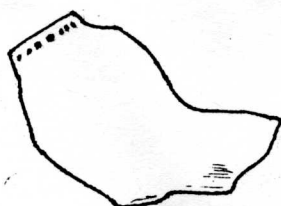


15



15c

Birmingham Tower
Dublin Castle



14 J

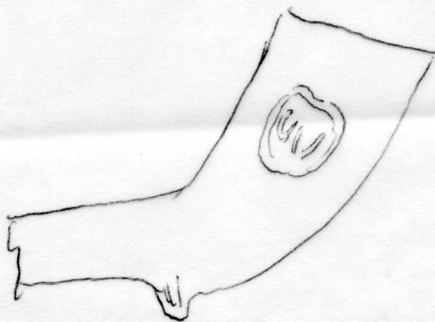


15d



Dongall

corner, Ned



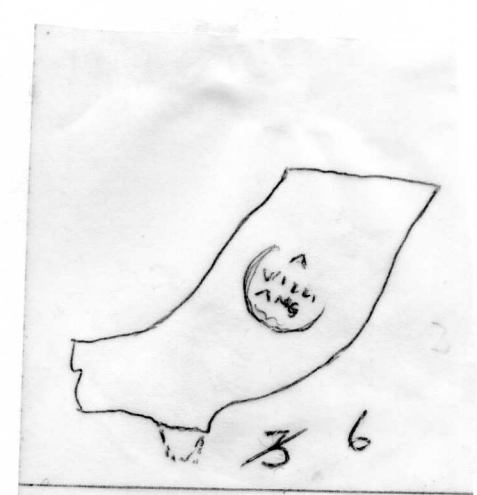
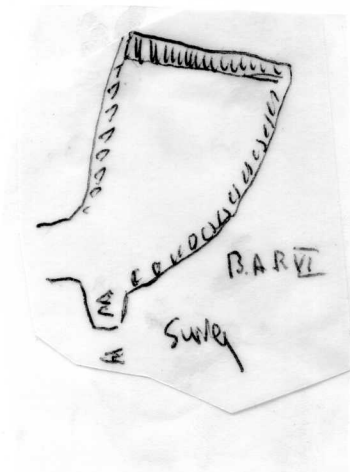
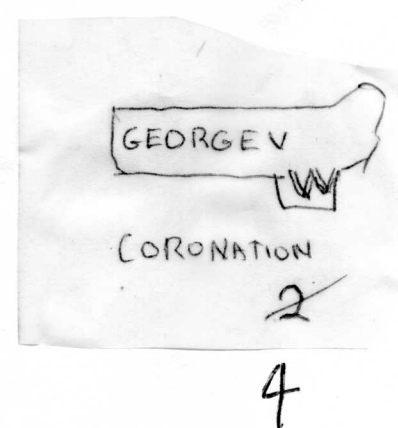
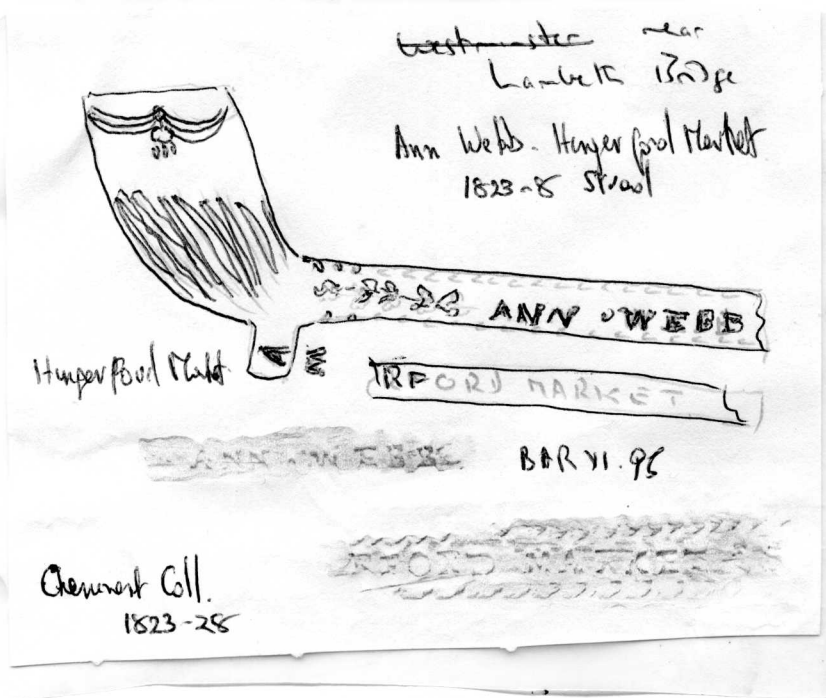
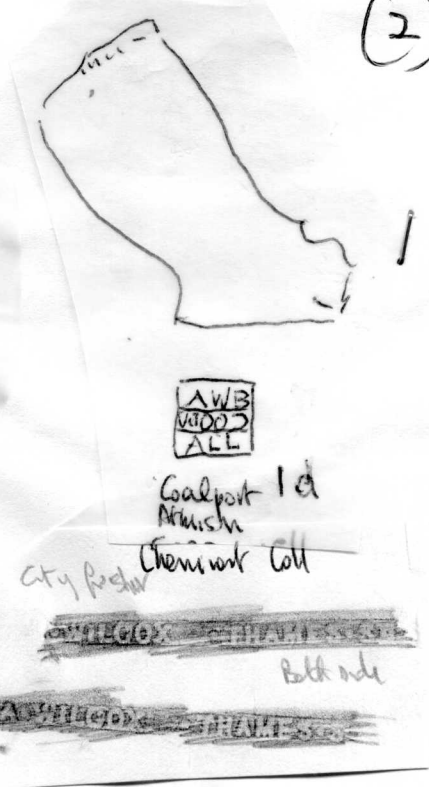
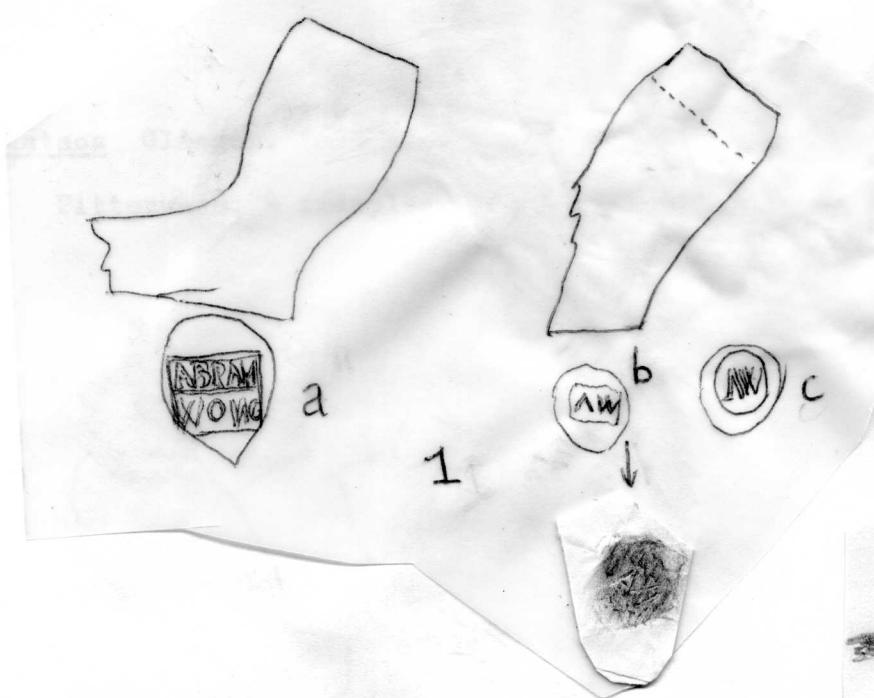
Trinity Island
Lough Key.

6.6.50 Comm 1941.

AW
(2)

- a
- 1 Type 5By British Mus, Bragge Coll. 11 examples.
" ABRAMA/WONG, Bousfield Coll.
 - b. Type 3By Ibsley Old Forge, Redditch, Worcs.
 - c. " W.Welington Excavations.
 - d. Coalport. AWB/WOOD/ALL - (Atkinson Coll. SC PR 15)
 2. Ann Webb Hungerford Market and 1823-8 Strand. Lambeth Bridge
Cheminant Coll.
 3. A.WILCOX/THAMES ST. City foreshore, Cheminant Coll.
 4. A/W. London, Atkinson Coll.
 5. A/W. Surrey. B.A.R.VI.
 6. Abraham Williams 1708-32. Bristol. J & P. 286.

(2)



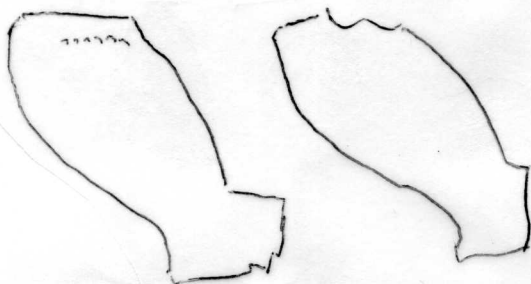
A

AW

2(A)

7. A. Watson Glasgow. 1668 -74.

Pittonweem. 4 examples. BAR X



AW
G 2.1

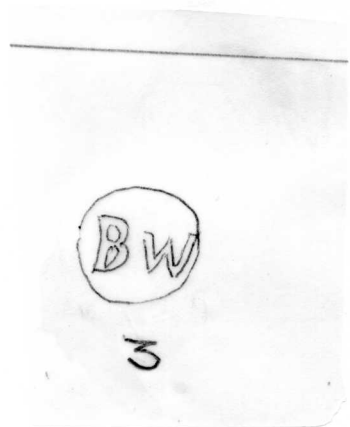
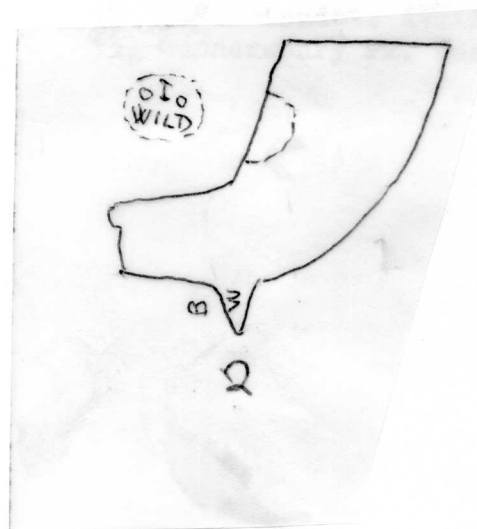
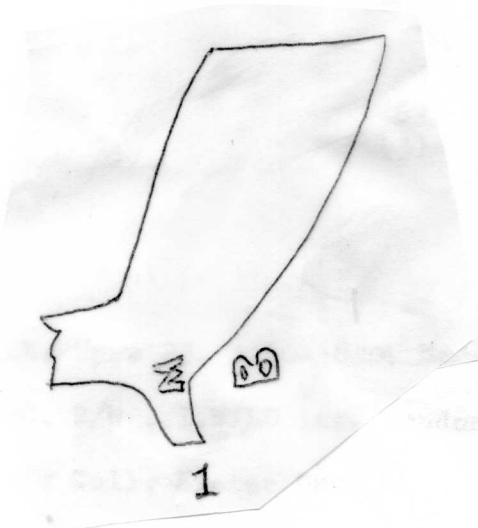
AW
G 2.1

Inver
A. Watson Glasgow 1668-74.
4 examples Pittonweem. BAR X

BW
(3)

1. Norwich. Type 23. 1760-1800. **Strangers Hall Mus.**
2. Type 24G. B/W . I.WILD inc. London Bridge. Rundle Coll. see TW
3. Binfield Coll, Exeter Mus.

Also Type 10 G. B/W Thames Green Coll, Guildhall Mus. Bankside.
11 " London. Atkinson Coll.
15. Gunnersbury Pk. Mus.



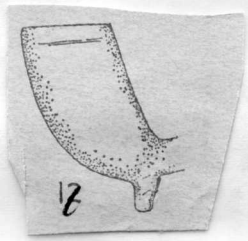
CW

(4)

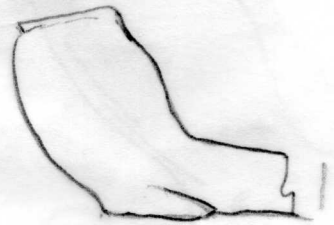
1. Caleb Wilkinson. Sunderland. 1827-41. after J.E.Parsons
- 1 b. Hull-Kings Head Gardvok. High St
2. Christopher West. 1847-85. Nottingham
 - a. Lambley and Radcliffe on Trent (Malkin Hill)
 - b. Nottingham, Hammond Coll.
- c. Nottingham Hammond Coll, ?John West 1837-51.

(4)A.

3. Limehouse Fields, Stepney, per J.F.Chalkley. c 1820-40
4. Dover Excavations 1969 and Romney Marsh
5. a Godalming. b. Guildford. B.A.R.VI c 1780-1800.
6. Charles Wattleton Guildford. 1704(b)-1755(ob)
 - a Guildford Mus. b. Dorking. c. Weybridge. a and b. c 1720-30
 - c. post 1750 may be different maker. B.A.R.VI also has C/W pipes from Albury, Alfold, Bookham, Bramley, Brockham, Capel, Godalming (20 examples) (see 5). Shamley Green, Staines.
7. Port Royal C/W crowned, Mayes Excavations.
- 7a. Charles Webb Chord 1690-1715 - Donyatt Excavations
 - Also. CW/CW each side spur. Ivychurch Kent, Atkinson Coll. 1800-20
 - Type 10/11G. London, polished, Atkinson Coll. Chiswick, Gunnersbury Pk. Mus.
 - Type 24G. and 12G Chiswick, Gunnersbury Pk Mus.
 - C/W on two thick spurs. Brinkworth, Wilts, Oak Rhind Coll.



1

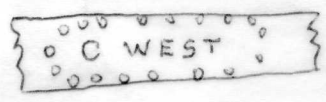


3 weeks
29 ship.

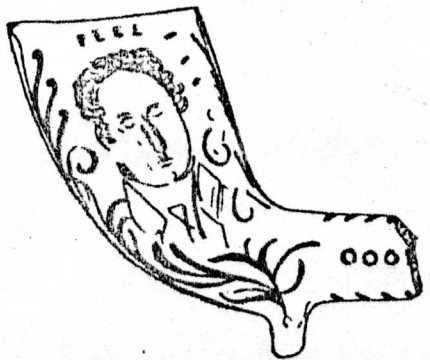


Kings Head Garderobe.
High CR 1
Hull

CONVENT ST

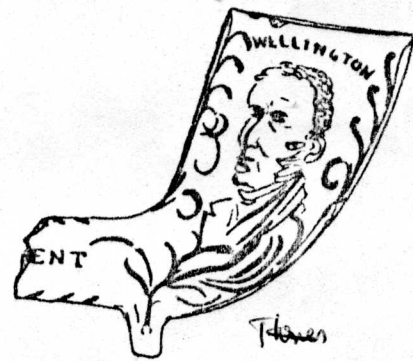


2a

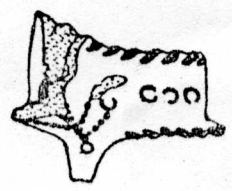


22

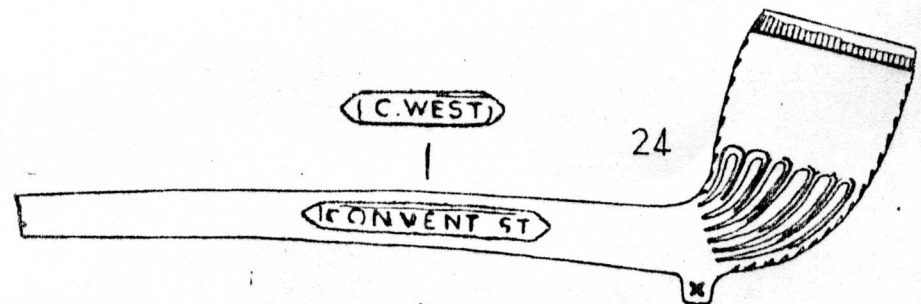
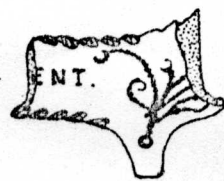
C.



Thomas
John West
1837-51



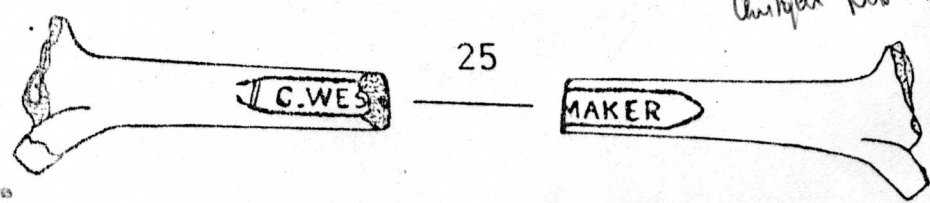
23



24

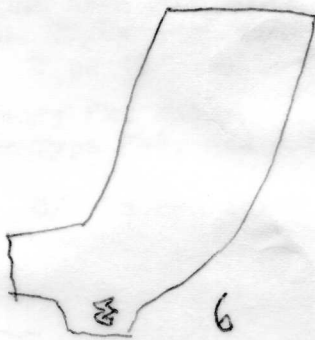
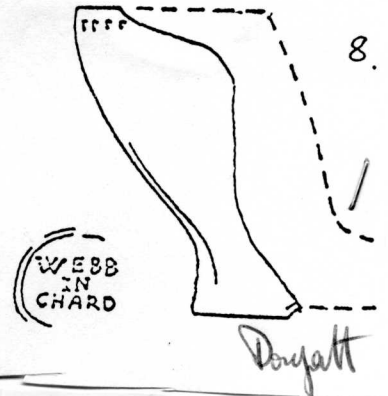
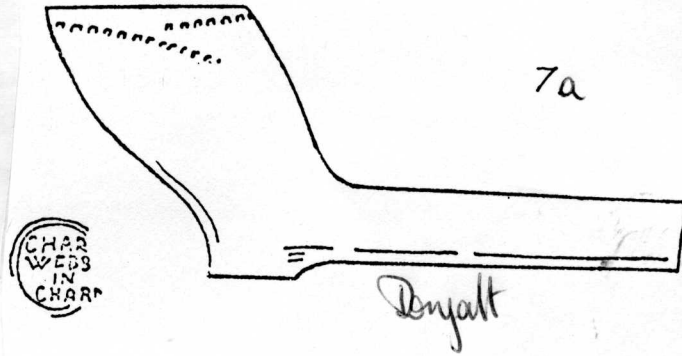
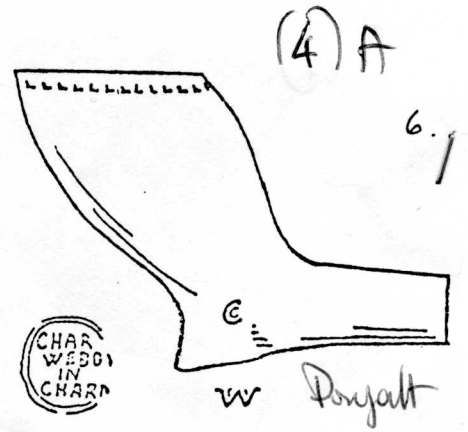
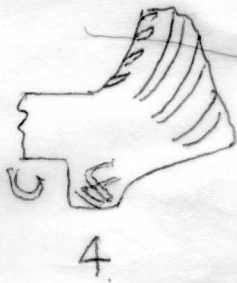
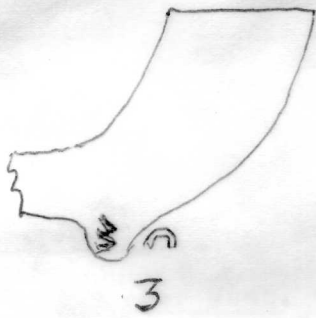
b

Anthony West 1847-56

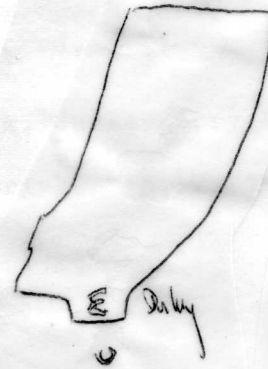


25

Nottingham. P. Hammond Coll



a



6



65

DW
(5)

Type 5By.

- 1 a Gloucseter per C.Hawkes.
b. Thursfield Coll, Broseley.

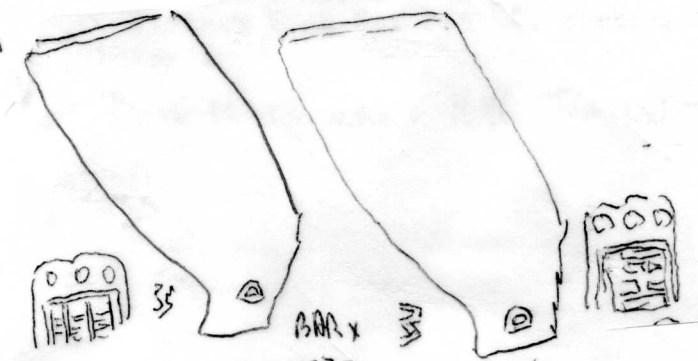
D/W on spur c 1700.

Chatham High St. Pit 18. perhaps Daniel Woodhouse, Rochester
1741-71.

2. David Montgomerie - 1696. Trarent. - BARX. r.282.



a 1 b.



Kels. David Ward
Malpore 164

2

EW
(6)A

4.

1. Linlithgow Palace. Incuse.
- 2 Black Gates, Newcastle on Tyne. Grey white, semi polished. *Edward Wolfe Newcastle*
- 3 Broseley 1155(06)

a Type 3By. Deritend. Birningham Mus.
b. " 2By Shrewsbury Mus and Thursfield Coll.
c Robinson Coll and proably d Binfield Album, Exeter Mus.
e and f Coventry Mus.

- 4 London 1620-40. a Atkinson Coll. b. Bankside deposit 1610330. rubbing
as b. Cheminant Coll

(6)A

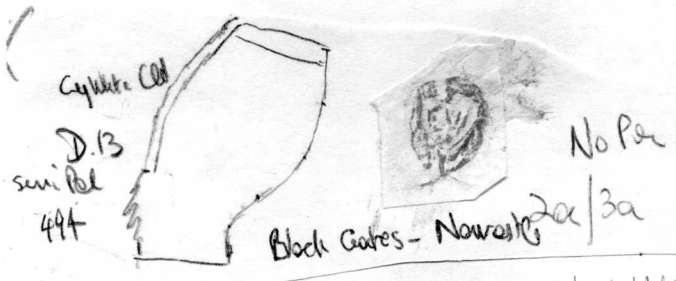
5. Queenhithe. Cheminant Coll. Stem mark. Both c 1680-1710.
6. Cheminant Coll. B.A.R. VI. 61.
7. Possibly Edward Webb Bedfordbury 1749. Westminster Poles. In this case
must have worked c 1745-75 or a little later.
 - a. Bedford Sq. 4/64. Spur side trimmed no mould line. c 1770-90
~~xxxxxx~~ also Atkinson Coll.
 - b and c Bedford Sq as above splayed bases cb Brentford kiln c 1765.
 - c Webb apparently over stamped on ? Ward.
 - d. Cheminant Coll mark as b on back of bowl M/S on sides spur.
 - e f g all stem marks.
 - e. Southwark possibly same mark as g and f
 - f. Brentford Excavations. Inscription round stem perhaps
~~xxxx~~ireN
mies
t)eir Ene Vanish
roman & Spanish
May refer to Newcastle and the Belhams c 1750.
 - g. Kingston B.A.RVI.

8. Edward Wimbol(Wimbolt) 1707 E.Woodhay, Hants
Stem marks Marlborough, Winchester, Highworth,

- 9 Taunton on type 4G c 1640-50. Taunton.



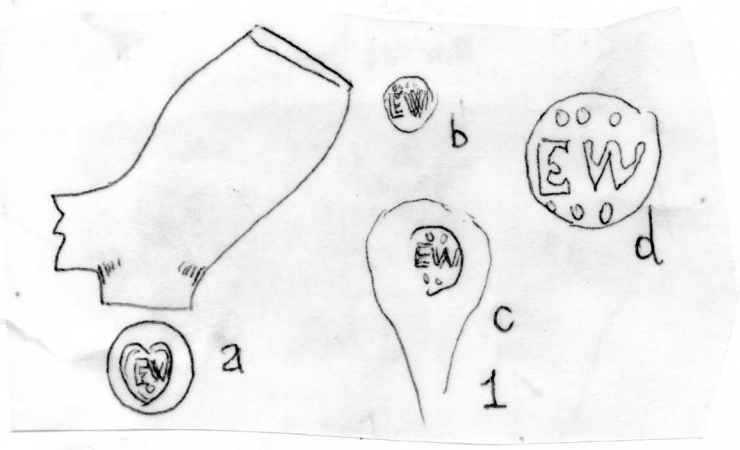
1



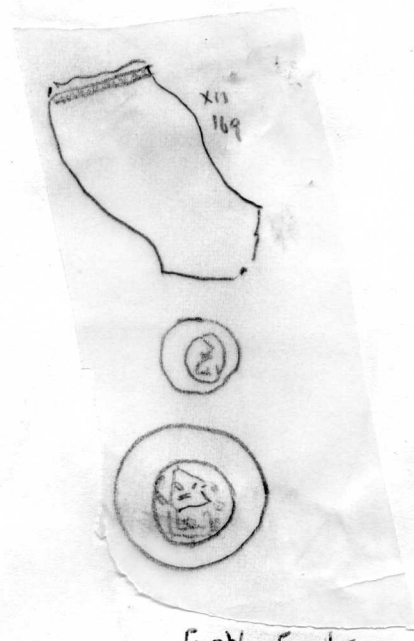
2a/3a

Palmer Volpe
Newcastle
oh 1955

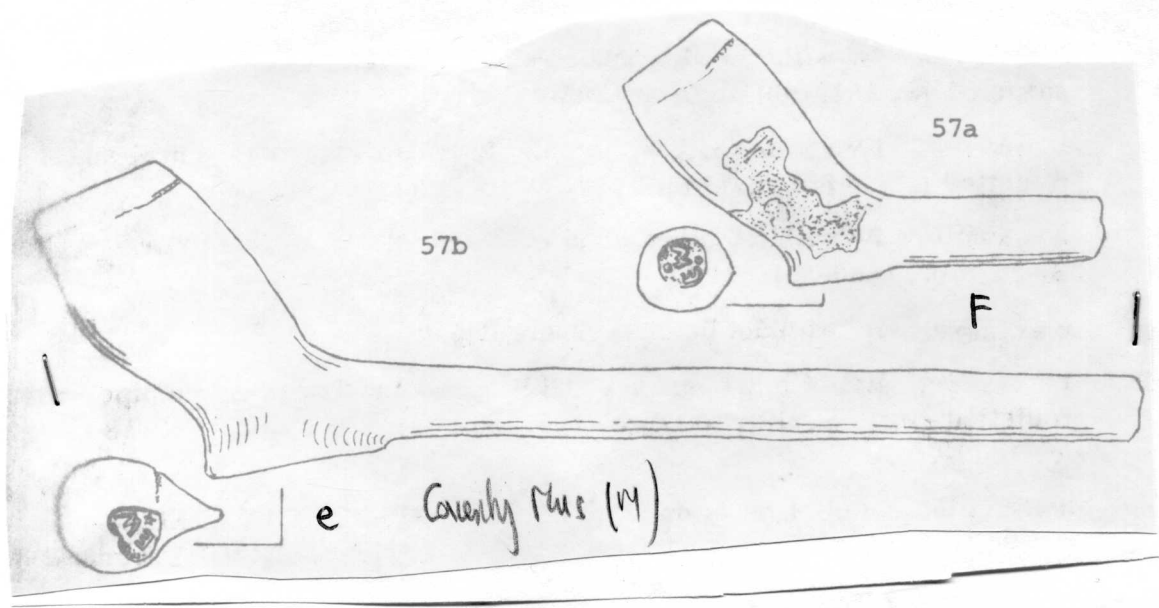
2



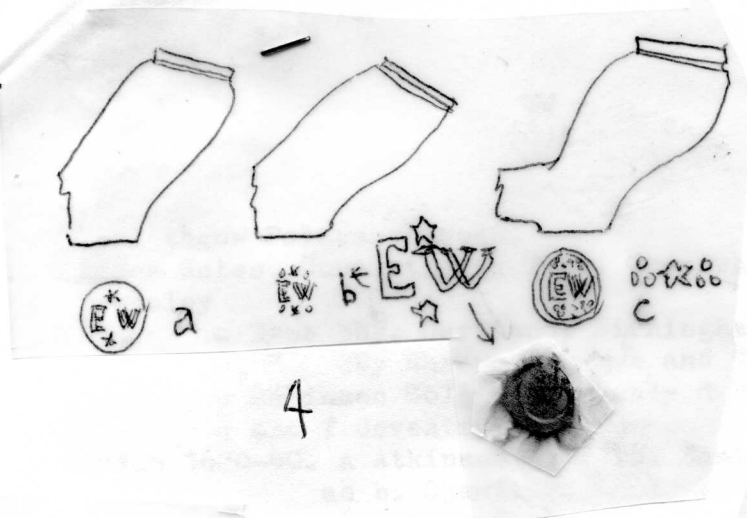
3



Castle Cornet



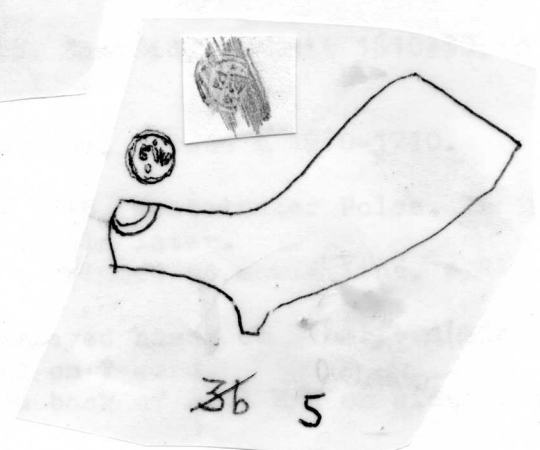
3



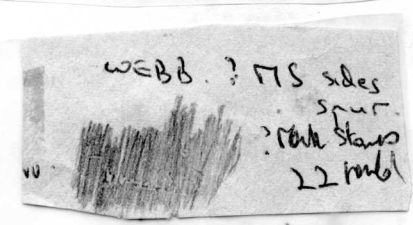
4



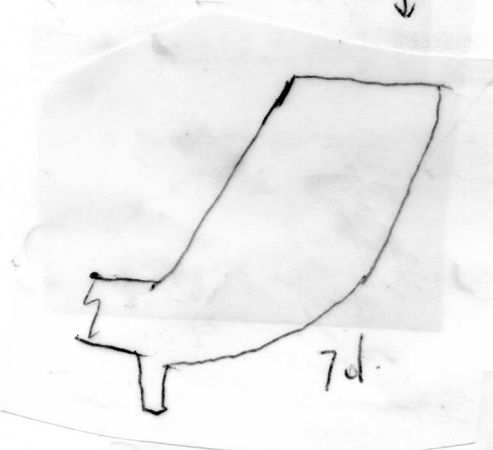
6



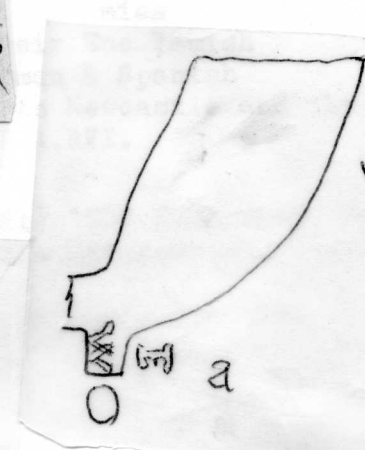
5



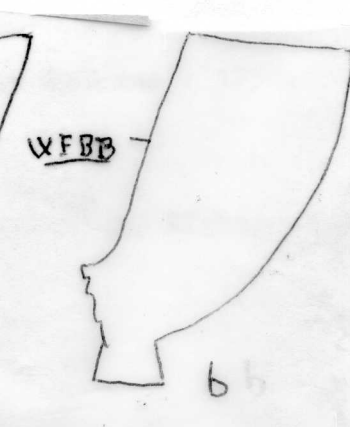
WIB edj



7d.



a



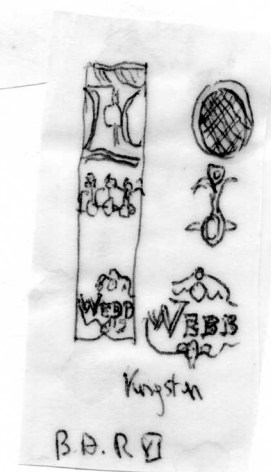
b



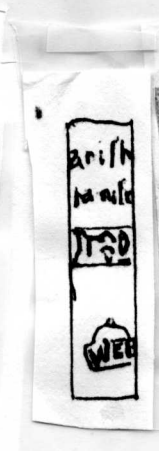
c



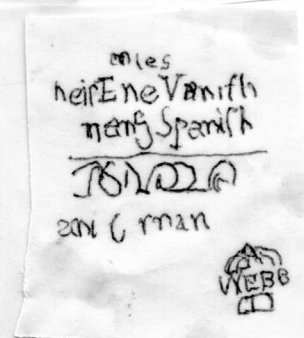
d7e



9

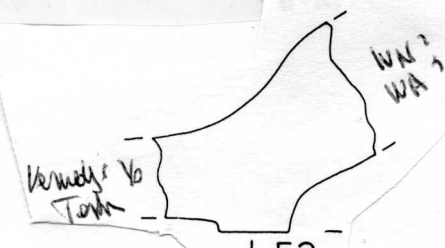


F Stem. Brantford P.x.c.v.



0793

7



52



8

9

FW
(7)

1. Francis Wood. Hull. 1682-91.

a Hull Sheppard No 37.

b Hull. North Walls

c. Hull. B.A.R.

cf. Trinity Court & Tomples Entry, Hall on York Bulbous.

2.

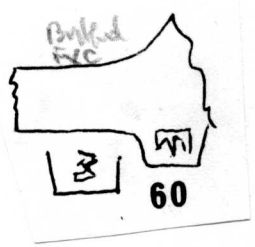
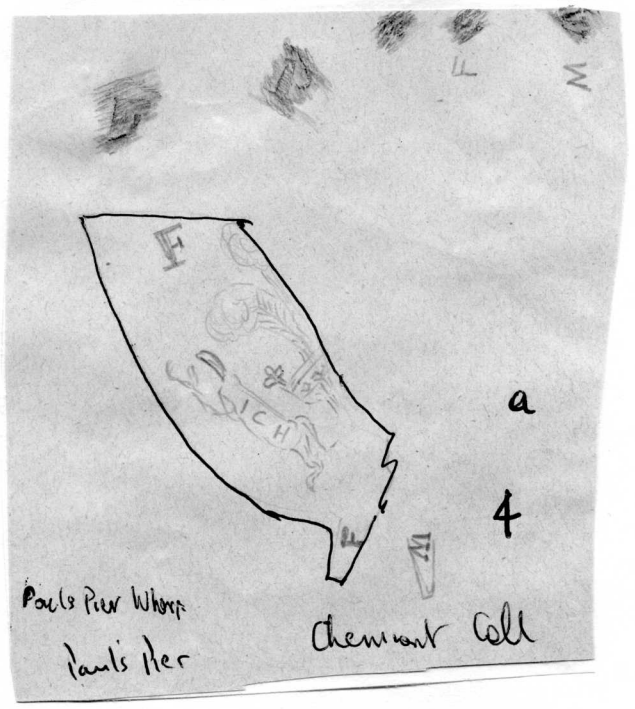
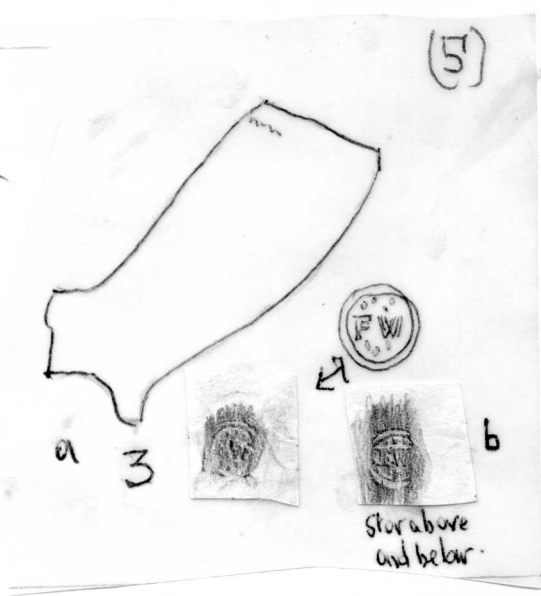
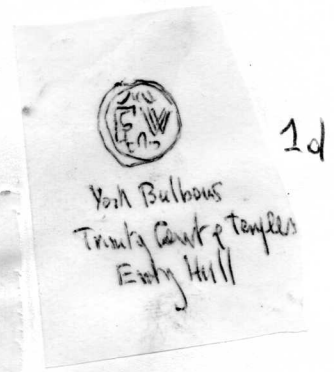
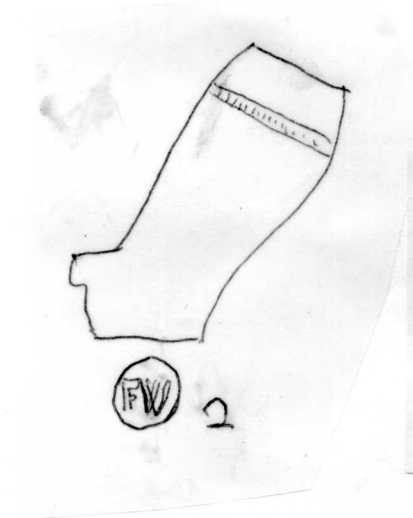
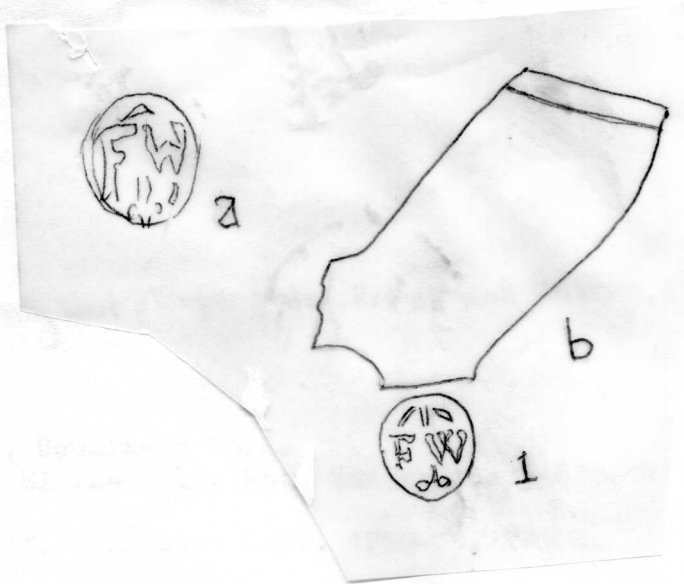
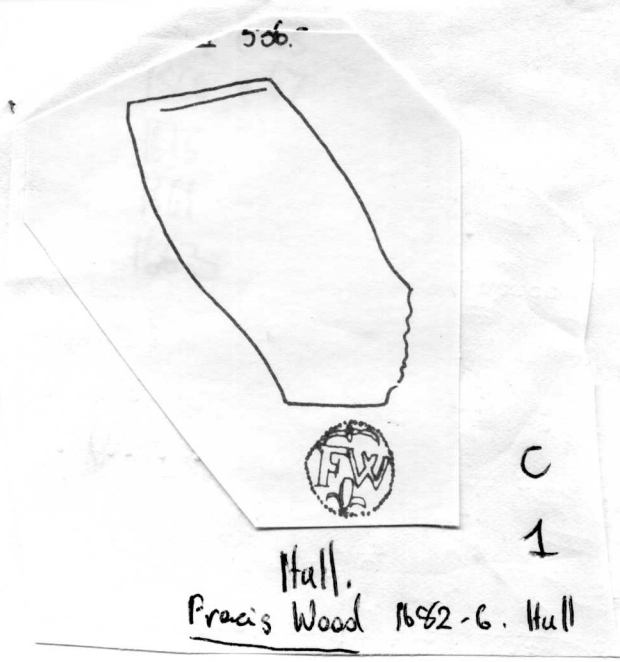
Type 3 By. Broseley, British Mus, Bousfield Coll.

3. Stem marks. a Cheminant Coll, b. Elkins Coll. Both Queenhithe. 1680-1710

c. Talmon Coll. BARRIX.

4. aP.O.W.F. and F.P. Pauls Pier Wharf, Cheminant Coll. 1750-70. BARVI.

b. Brentford Excavations.



GW
(8)

1. Gabriel Westaby 1635(F as trunkmaker)-1646(T.P.Cooper) York
a Sandal Castle and Yorkshire and York(T.P.C.)
b. York Excavations.
2. George Spencer Watkinson 1843-85 Market Rasen Lincs.
Following Lincoln Excavations
a Steep Hill and Danes Terrace, 4 and 5/64,
b West Parade and St Paul's within. 4/64.
c West Parade.
d. Nottingham, Hammond Coll. *2 Leicester (Green Coll)*
3. Type 5By. Chester. 1680-1710
a Broseley (Atkinson Coll) Gannett between stars also dts below
4. Geo. Walker Peterborough 1798(B) P. pe c 1820-30.
Stamford, Comrie Coll.

(8)A

5. George Weaver c 1680-1700 ? Aylesbury
a Cheminant Coll, Winslow
b. Castle St Kiln, Aylesbury. (Recs Bucks 21.1979.)
- 6 a Gunnersbury Park Mus. c 1670-80.
b Queenhithe. Cheminant Coll.
- 7 G/W Crowned. Woolwich Dockyard. v 1680-1700.
8. George Ward, Chelsea 1864-93.
Atkinson Coll.
9. George Wheeler, Holborn 1842-66
a Watling House and Salters Hall, Mus Lond.
b Billingsgate, Cheminant Coll.

(8)B

George Webb 1805-28 Strand and Tooley St.

10. a Thames Cheminant Coll. b. London Atkinson, back of bowl.
c Brentford Excavations 1800-20.
d. Cheminat Coll c 1828.

(8)C.

- 11 George Webb Chard. Perhaps father and son (see photos for marker)
a, b, c. Taunton Mus. d Chard, Rippon Coll, Exeter Mus, ex Binfield Coll.

e Taunton Mus, Dorchester. London Bridge, Wills Mus (Harris Coll)

Above c 1650-80

f. Taunton, Lyme Regis, Stockland, Binfield Album from Taunton.

Talbot County, Maryland 1680-96.

g. Chard, Rippon Coll, Exeter Mus 8/64. Grey white, polished

h Exeter Excavations 8/64, polished off white.

i. Cheminant Coll.

j Chard debris of the kiln 1000 bowls per S. Minnitt,

k Dorchester Woodham House 1968,

Above c 1680-1710

- 12 a, ~~n~~, ~~z~~, Exeter Excavations

b. Type as c. Taunton Mus(? incuse) c. Exeter Mus, Rippons cards.

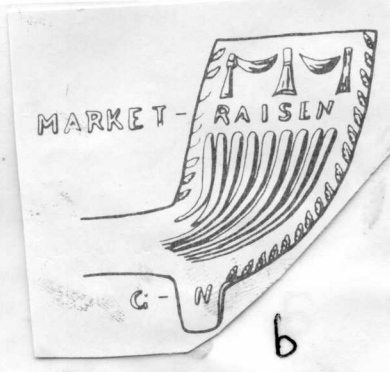
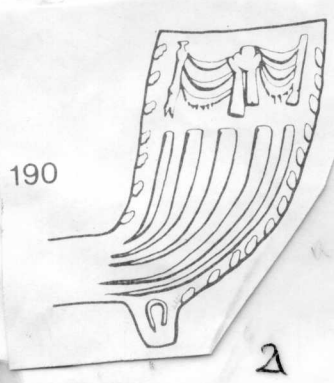
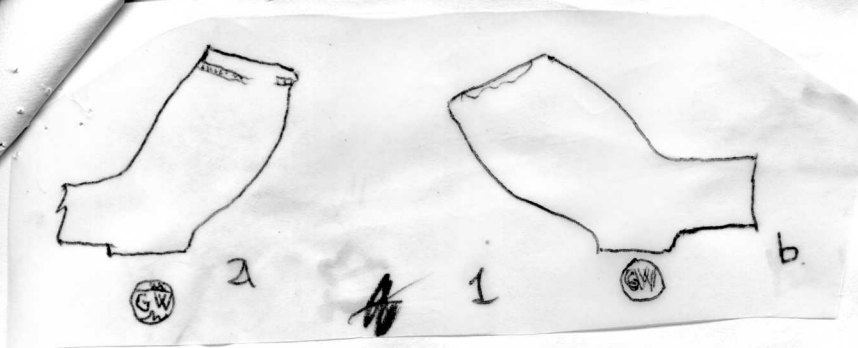
e Binfield Album, Exeter

Also, Type 5c. By. GW and Fleur de lis. Broseley, Atkinson Coll.

Type 10/11 G. G/W Bankside.

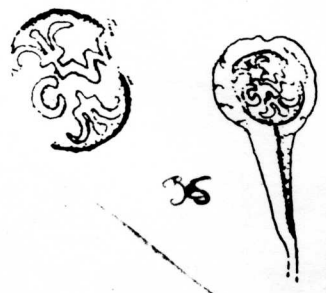
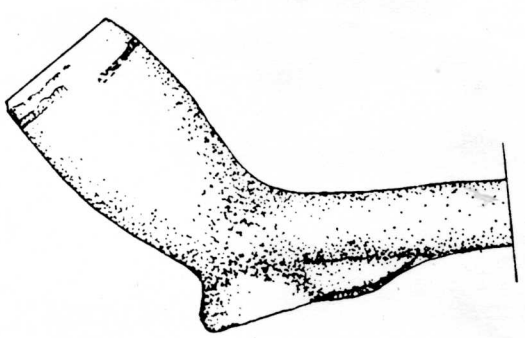
12/13, G/W. Gunnersbury Pk. Mus.

Type ¹³ uncertain G/W crowned Atkinson Coll.



G.S.W

2
89
Leicester (Green Gll)
e

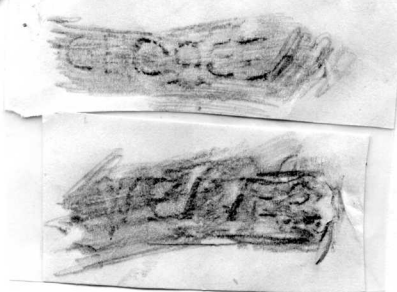


Cluster der Mo Rulken



Dots below stars above

GEORGE | WEAVER.



a

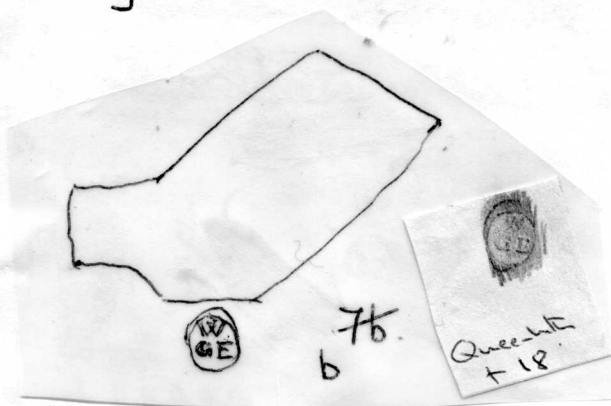
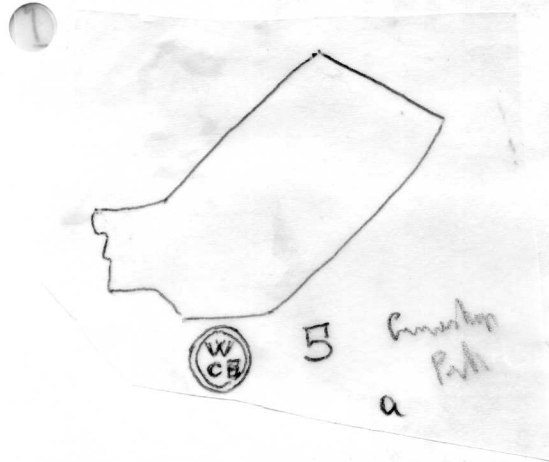


b

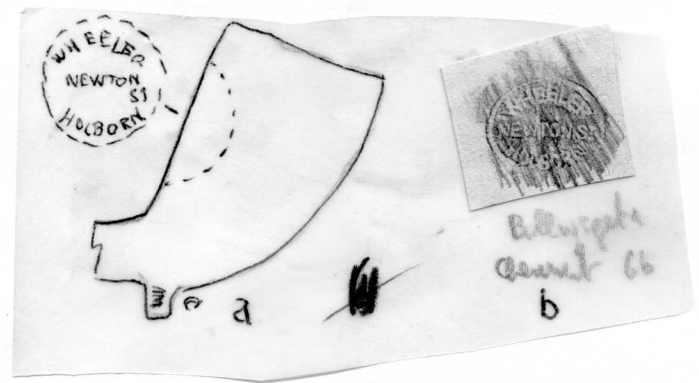
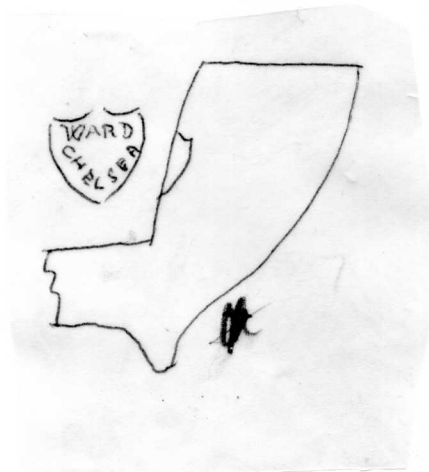
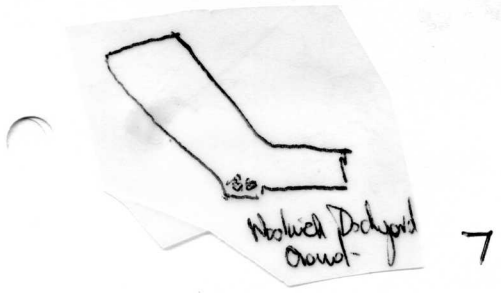
Rees Bucks
21. 1879. Castle St Rees
Aylesbury.



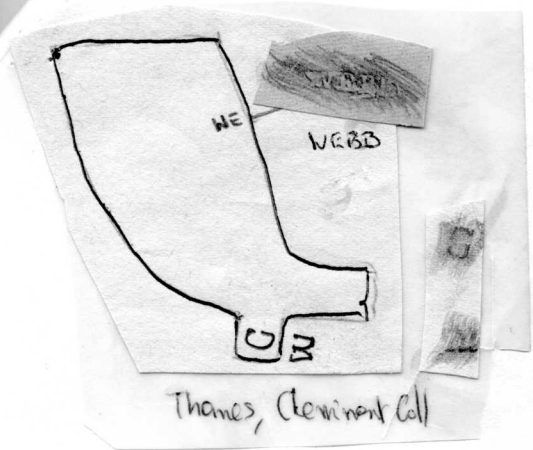
5



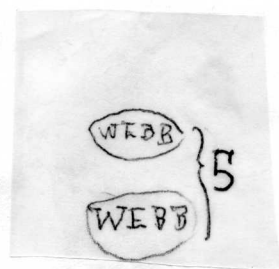
6



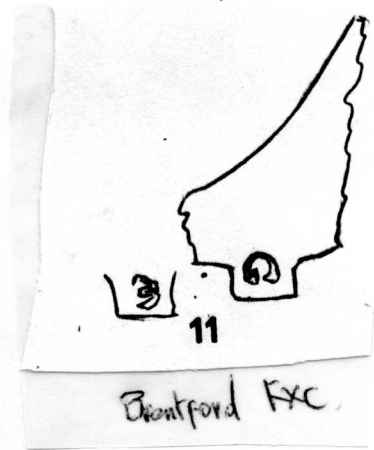
9



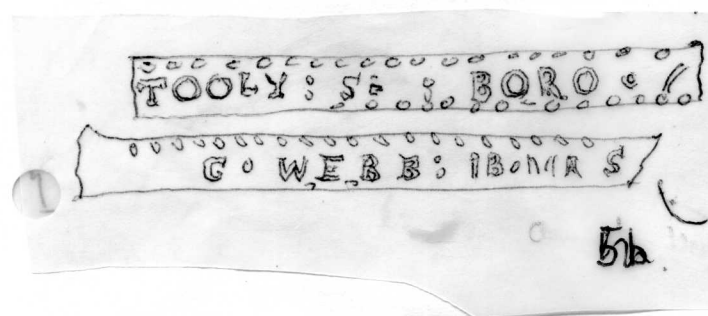
a



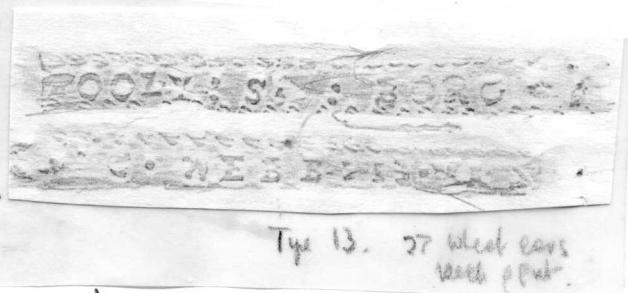
b



c

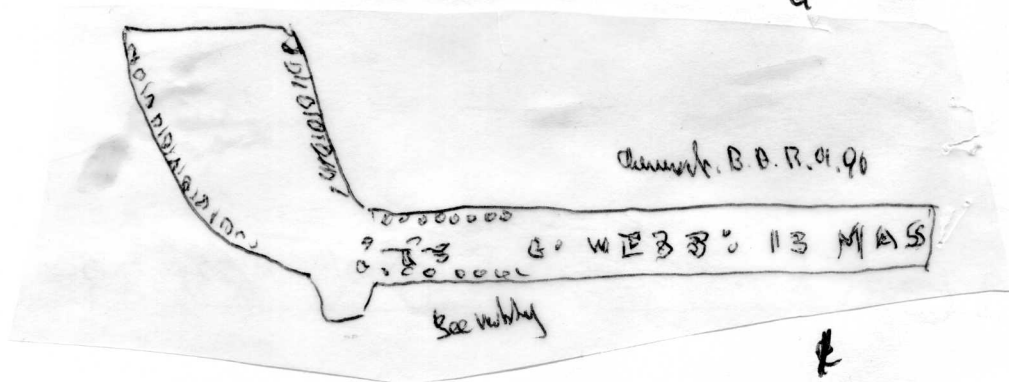


5b



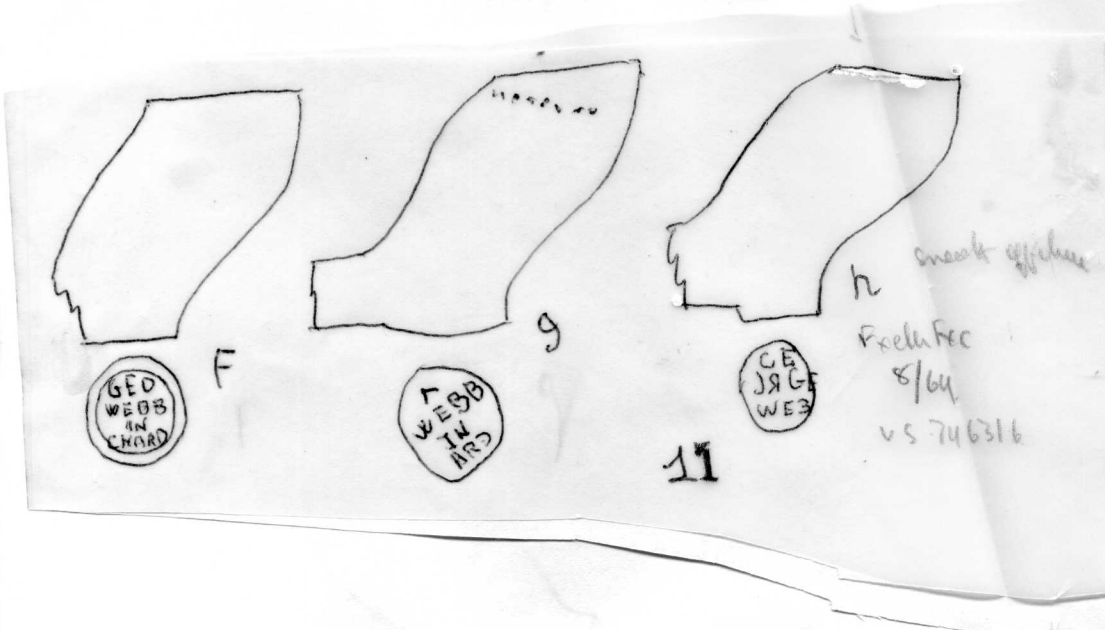
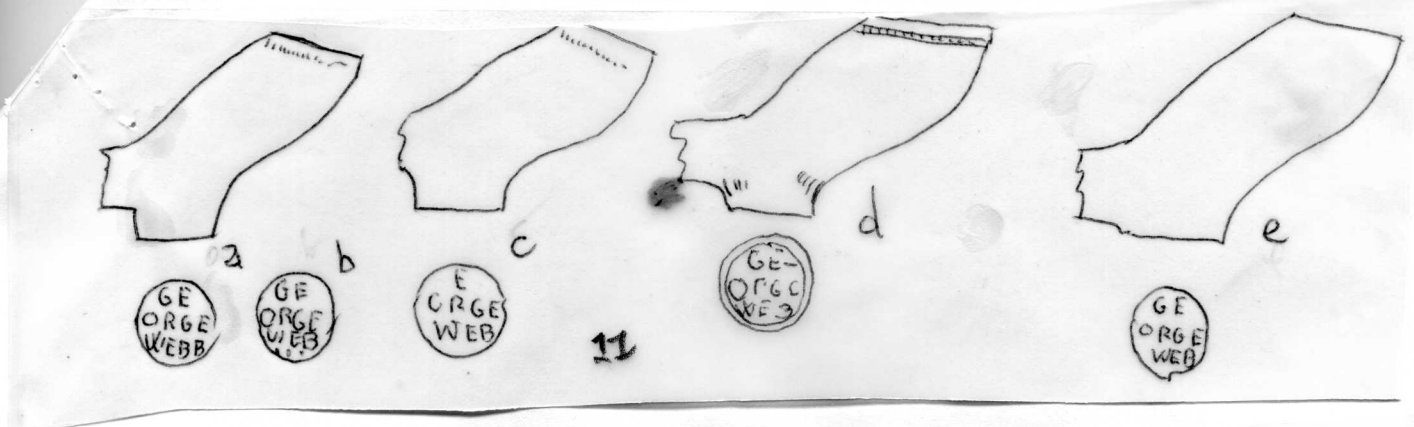
Type 13. 27 wheel cars
each part.

d



10

10

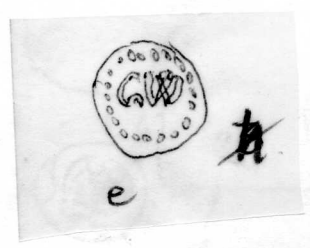
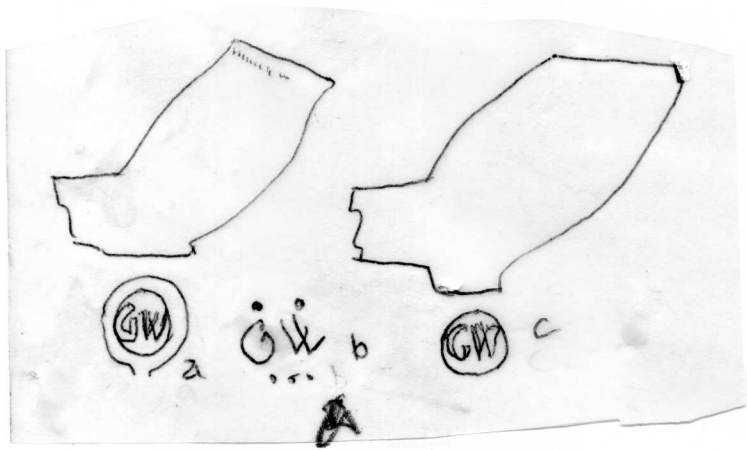
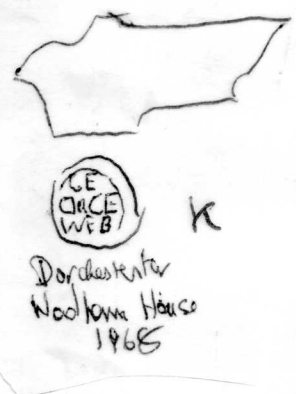


GEORGE WEBB IN CHARD
C 1700.
cf VAR. I
Fig 10. no 18
Listed in your index.
Too faint to rub

Dont of a George Webb in Chard clay pipe.

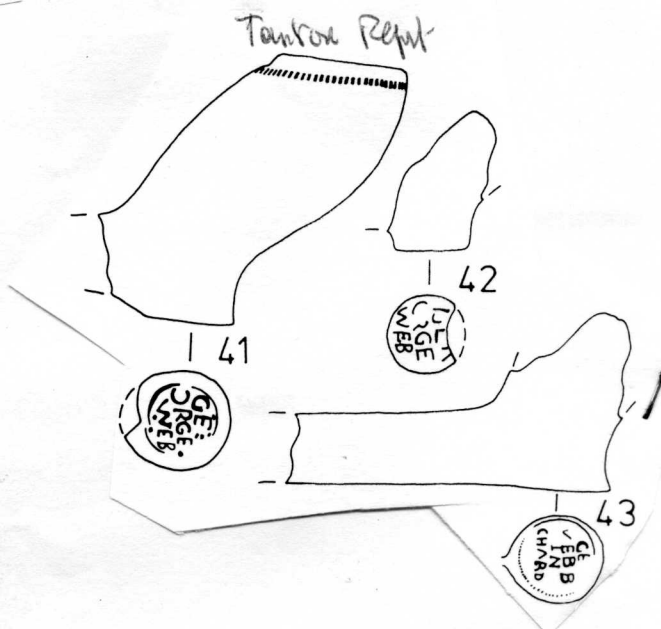
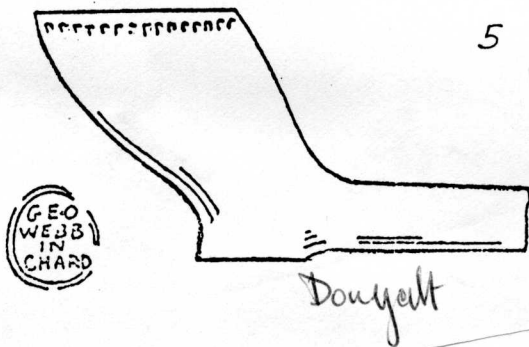
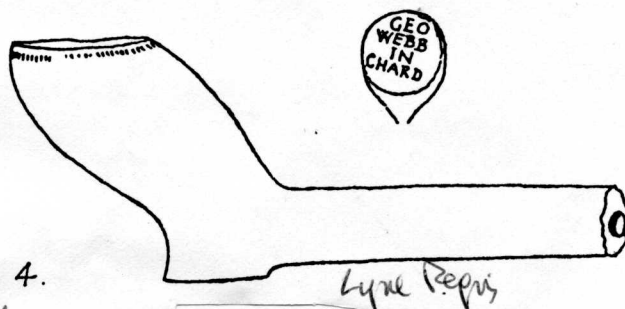
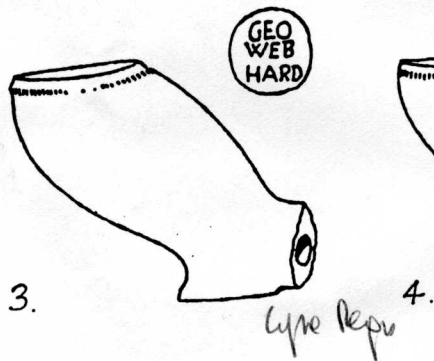
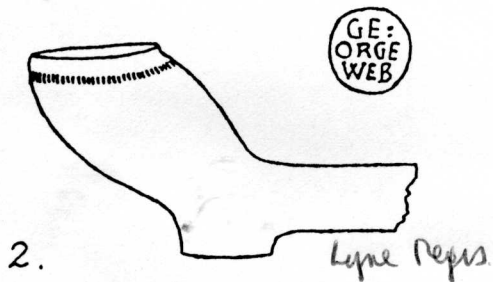


From Kiln
Dehn's
at Chard
1000 Bards



ENGLISH WEST COUNTRY PIPES

D.R. Atkinson - Newell 3 (Subhm 117)

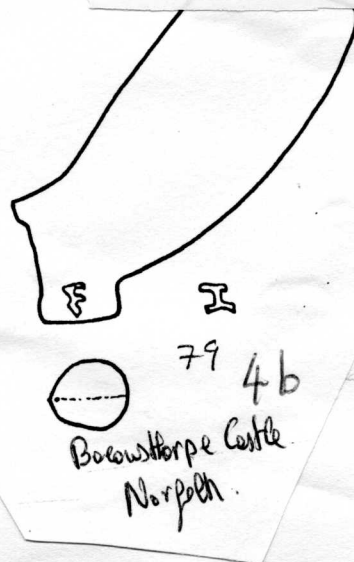
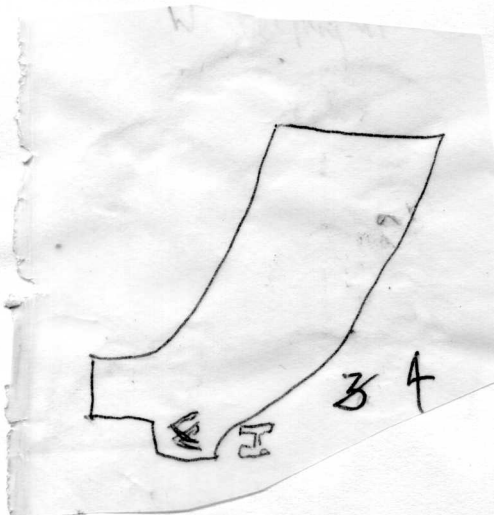
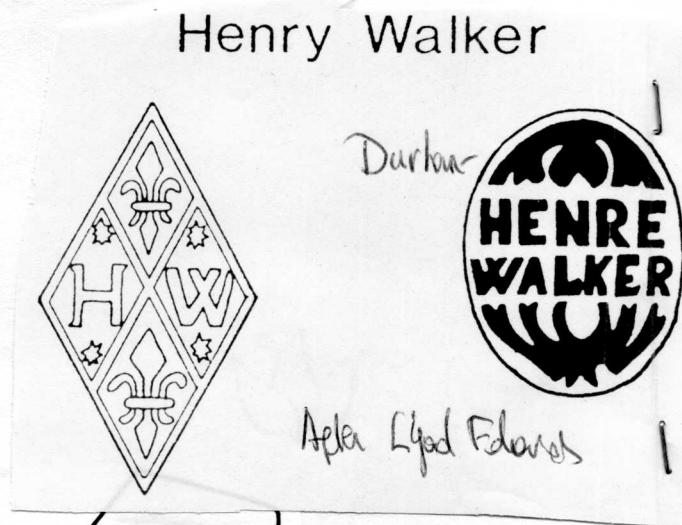
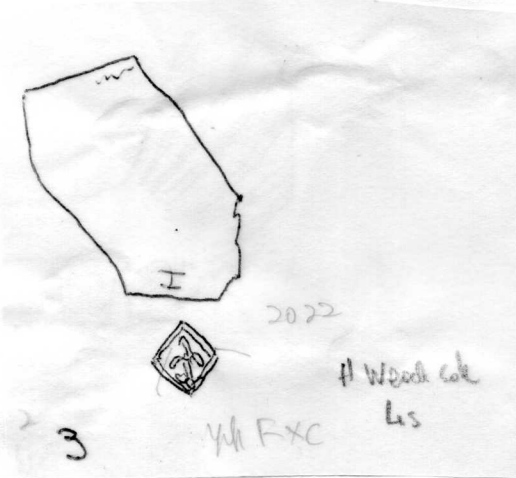
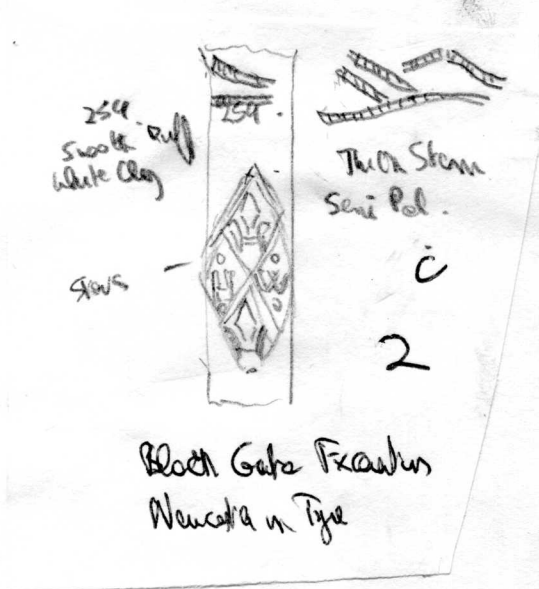
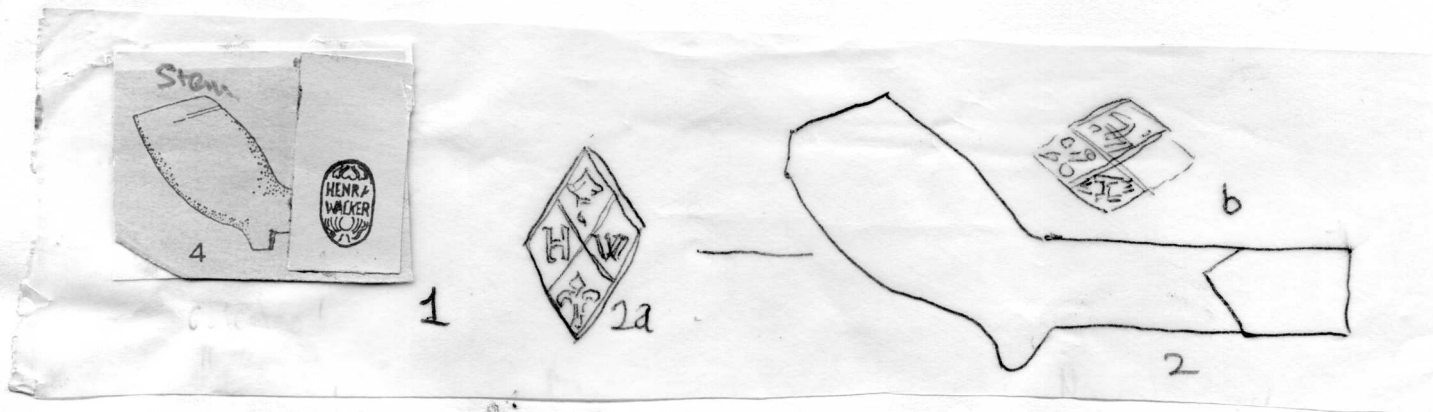


HW
(9)

1. Henry Walker 1674-99 Gateshead.
Stem mark after Parsons. pipe $\frac{1}{2}$. Also W.Welpington
2. a Yorkshire from a rubbing by Parsons
b Newcastle Curtain Wall 1966. 6/64.
c Black Gates excavations, Newcastle. semi polished thick stem. Stars
above and below HW, d Black Friars Newcastle Jarrow
Date c 1670-90.
3. York Excavations H/W on sides of bowl c 1670-80.
4. Norwich also on type 22G. c 1740-70. Strangers Hall Mus.
b. Bacon's Hoarpe Castle Norfolk
(9)A
5. Type 19G. Queenhithe. Cheminant Coll.
- 6 a Fill of Wm Heath's Kiln Brentford. Thick red bowl 5/64
b. Brentford Excavations. Also Putney
- 7 Perhaps Henry Wheeler 1841 Southampton.
Portsmouth Harbour, Hall Coll.

Also Type 8G H/W Mus Lond. 1680-1700
" 10G H/W crowned. Chiswick, Gunnersbury Pk Mus cp 6a above.

Pipe marked ~~HW~~ HW on base. Pipe Aston, Hereford.

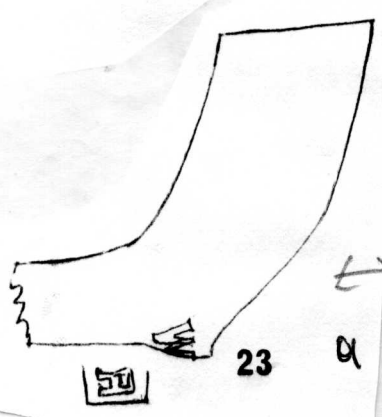




(HW) stem mark in relief + 19 G

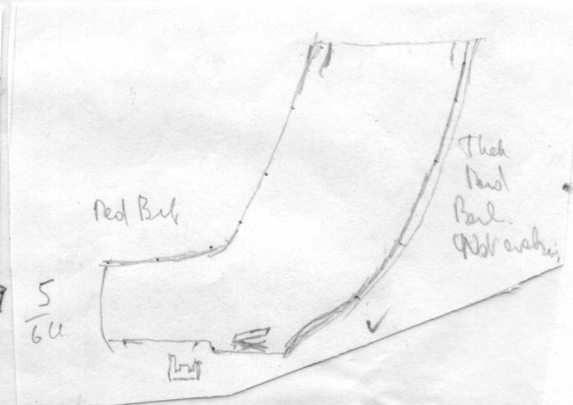
Queenhithe
Chenest Coll

5



23

a



Brentford Kilm Fill



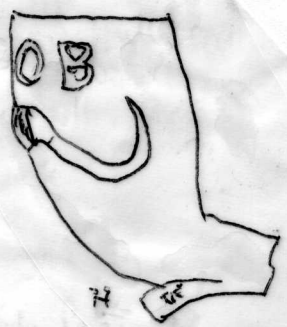
12

5

b

6

Brentford Fce



74

7

Portsmouth - Hall Coll
? Henry Wheeler - Southampton
1841.

IW

10.

1. Maker unknown¹
 - a Edinburgh Castle.
 - b Pittenweem Level 2. BAR X.
- 2
 - a Pontefract, per Simon Lawrence
 - b Wester Fulwood Manor, Renfrew. John Waldie & Co Glasgow 1870-1929.
3. John Watson Sunderland c1790 also J.WATSON/GATESHED , Ebchester, Walbottle.
4. ?John Wanless 1692(m) Newcastle.
 - a incuse base mark. Richmond Hubble Coll
 - b W.Welpington Arhc Ael XV 1987.
5. a John Windle. Leeds. 3 examples, Coventry Mus. John Windle Sen 1749-75(ob)
Wm Windle 1817 Leeds D. This is probably Wm
- b John Wilson (2) Leeds 1870-93
stem incuse, Cheminant Coll also Newhaven
6. a Ripon. St Agnesgate excavations.
 - b Grafton Lodge Savile Park Halifax(H.L.Roth notes on old Halifax)
about ¹/₂.
- 7 John Warre 1856 Alfold Lincs. Wrangel and Monncastle.

IW (10)



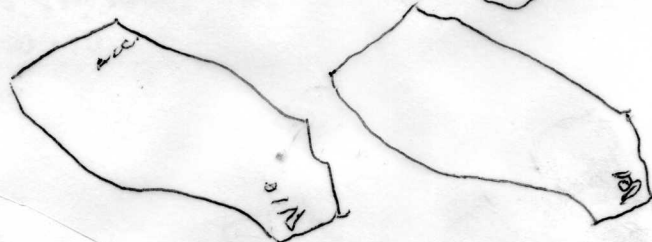
Edinburgh Coll

a 1

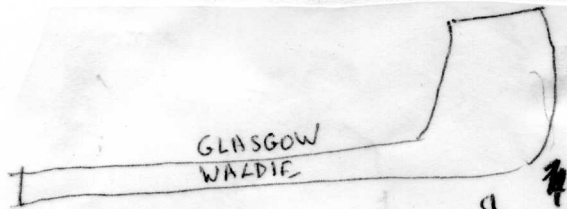


P. Newman level II

BAR-X



1b



a



2

GLASGOW
Wester Fulwood Manor House - Pen-Fraoch

J. WATSON
70 70 70

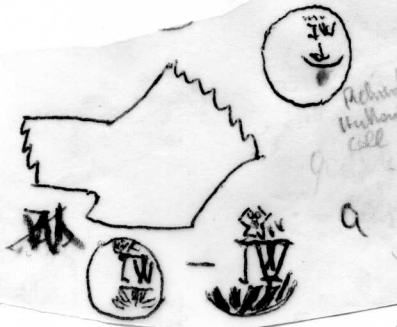
3



$\frac{1}{2}$
IW
West Welford
AA XV. 1967



b



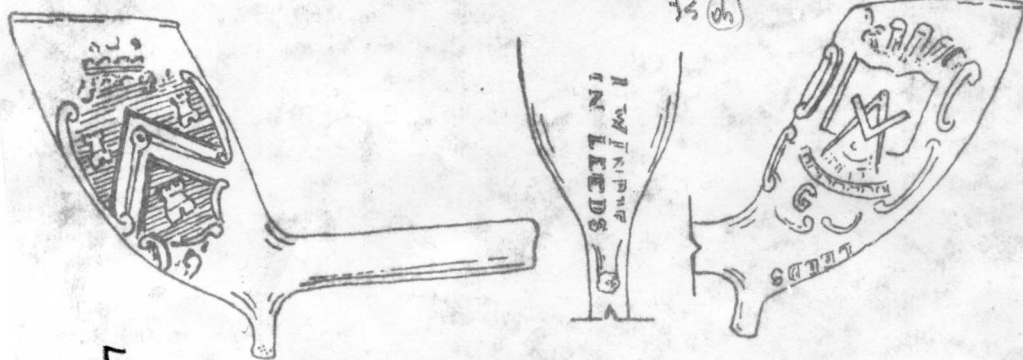
a

4

10 IW

1817 W. Wall 60

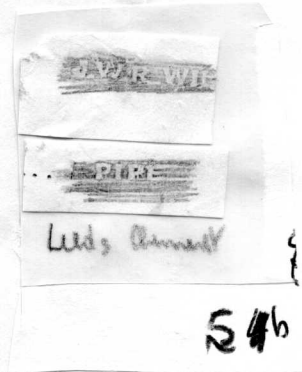
1782-67 Son of 55
75 (ch)



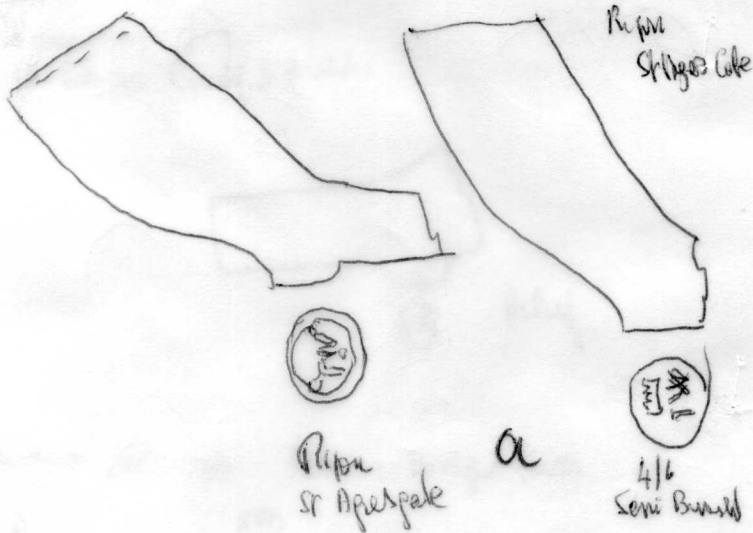
5
4 a

Fig. 14

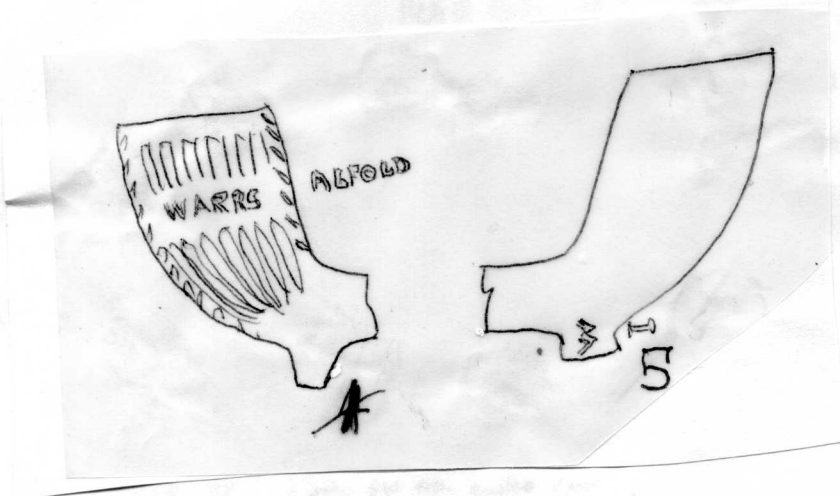
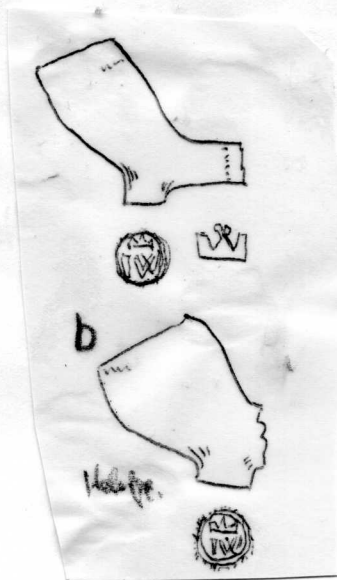
Conventy Miss - (M) 3 Examples John Walker. Leeds
277 1800-20



54b



6



and Leeds,
reference, c. 12007

716

TONG CHURCH $\triangle 1164$
(Between Bradford
& Leeds

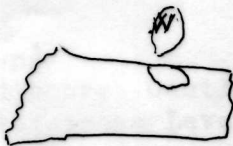
012

hw or gw?

(10) A

HILLAM
F132A 244

Relief



Relief

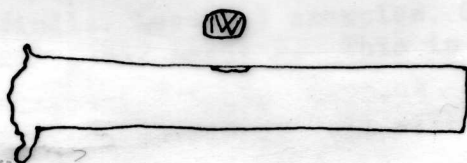
a



?WH or W!
or VIM

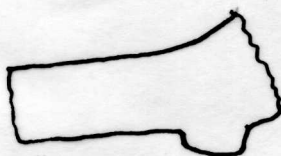
F

TONG CHURCH $\triangle 128$ 004/4
Between Bradford & Leeds



b

TONG CHURCH $\triangle 590$ 070/1
Between Bradford & Leeds



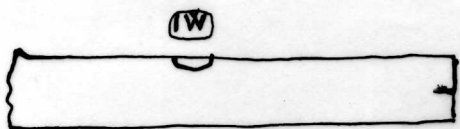
Relief

c

All for Simon Lawrence

TONG CHURCH $\triangle 600$ 004/4 Between Bradford & Leeds

a)



d

Relief

b)

(10) A

6. a-e From Tong Church (between Bradford and Leeds.
f from Hillam.

incuse stem amrks per. S. Lawrence. c 1700?

TONG CHURCH $\triangle 127$ 004/4 poor but as below.

$\triangle 126$ 004/4

Between Bradford & Leeds

e



- poss crown

- poss GW, from another v. poor example

Relief

7/6

7. Probably John Wright, York Free 1663 fl to c 1690.

a. Blubberhouse Moor, nr Bradford. Potovens. Trowden E. Lancs.

b Rockley Smithies, nr Barnsley. $\frac{1}{2}$,

c Hull Sheppard 3.

d York and Col Williamsburg.

e Hull. $\frac{1}{2}$.

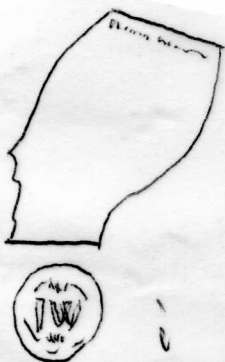
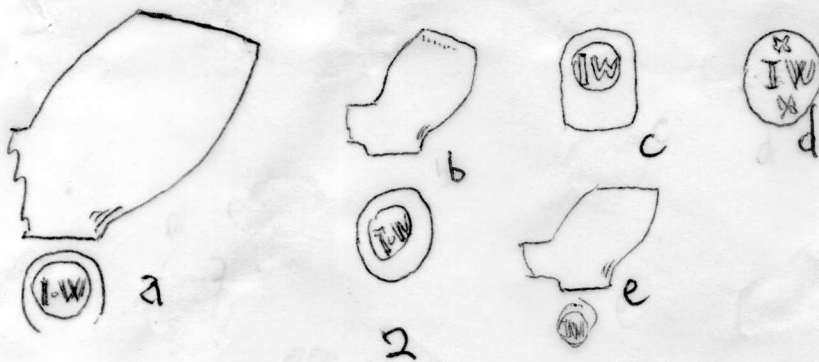
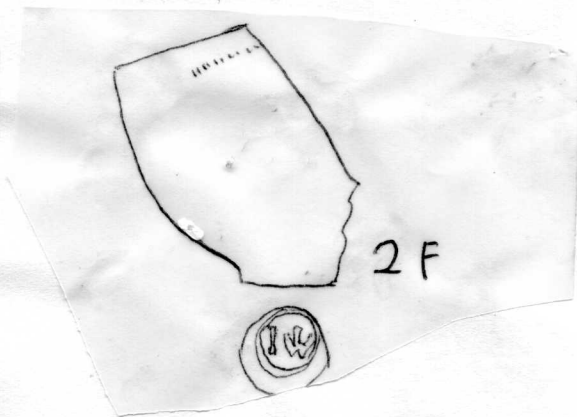
f,g,h. York Excavations.

i Richmond, Yorks, Hubbard Coll.

j Hull Mus.

~~10A~~

(10) B



16
Hull Museum



72

67

(10)

DC
(9)
IW.

8 10. John Wyer Nottingham 1730-74.

Decorated stems on types A and B.

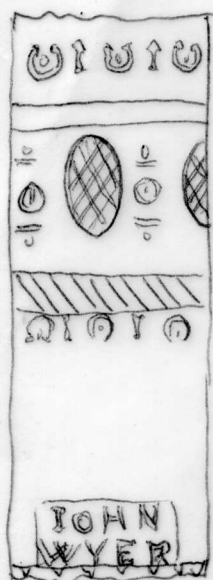
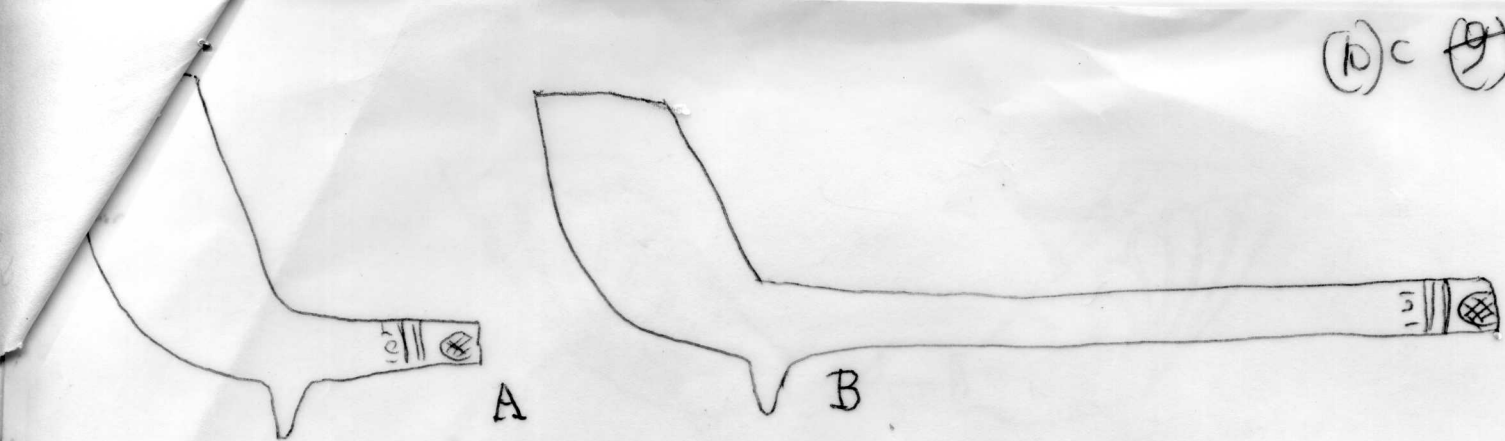
- a on type A. Drury Hill, Town Wall, Fishergate Nottingham. Gainsboro'. *Ruddington*
- b. on type B. Nottingham, ~~Flawford~~.
- c. Fishergate
- d. Flawford.
- e. Fishergate.

9 11 Probaly John Wyer Langford. 1832-42. Nottingham Fl from c.1810

a Glasshouse St.

b " and Drury Hill.

c. *Peter Hammond*
d. " *Collection*



a



b



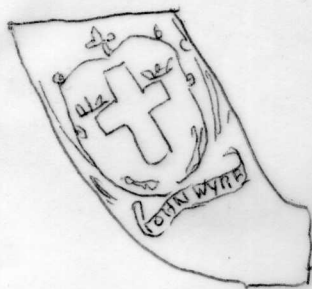
c



e

10 8

10



a



b



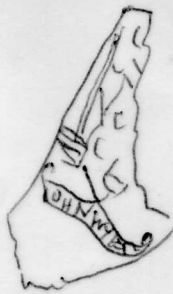
c

11

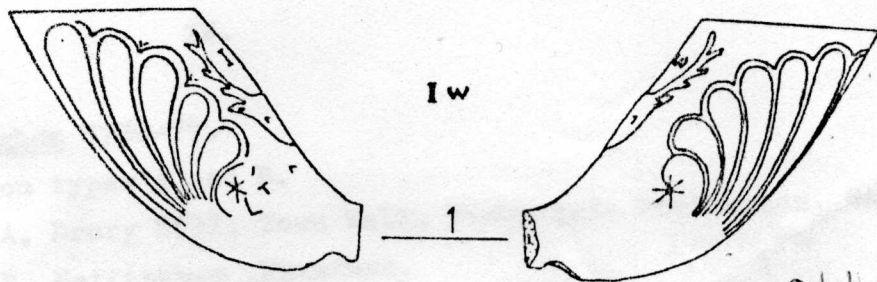
9



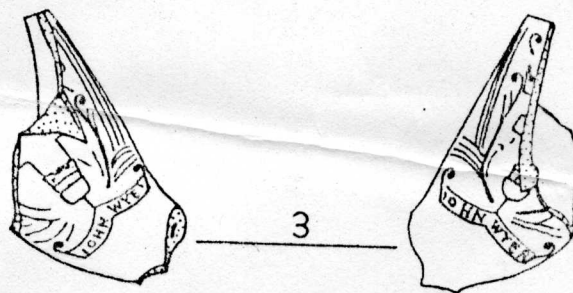
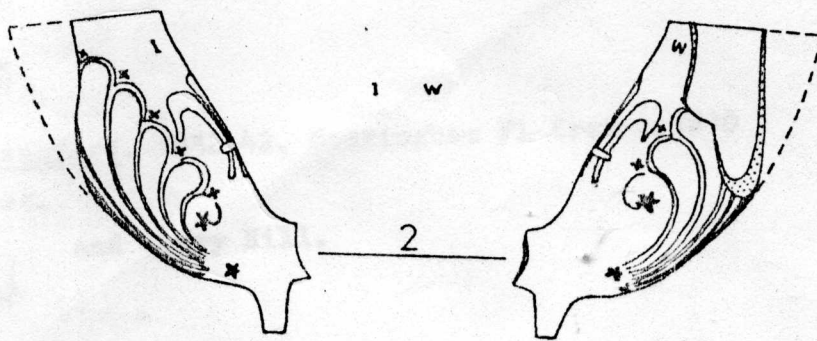
d



Nollm. Hamard.



John Weyer
Longford
1823-42



~~1012~~
IW

10 John Wright, Nottingham 1710-29. Nottingham

This represents probably 2 people as the John Wright married in 17¹⁶ was then 27 ^{and so would be unlikely to have voted in the 1710 Polls} ~~and so could not have voted in the 1710 polls.~~

d, e and f may be the earlier Wright.

a. ~~Typexaxexxx~~ on Type A Castle Mus., Fishergate, Drury Hill with IW on back of bowl. High Pavement Cess Pit (closing date c.1730)

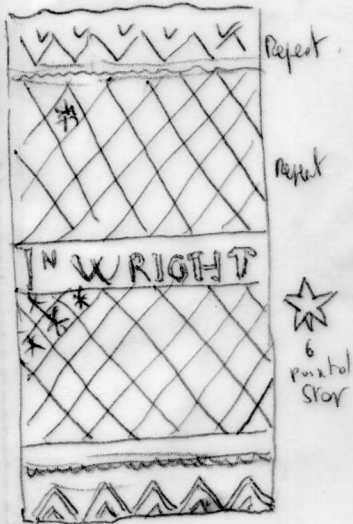
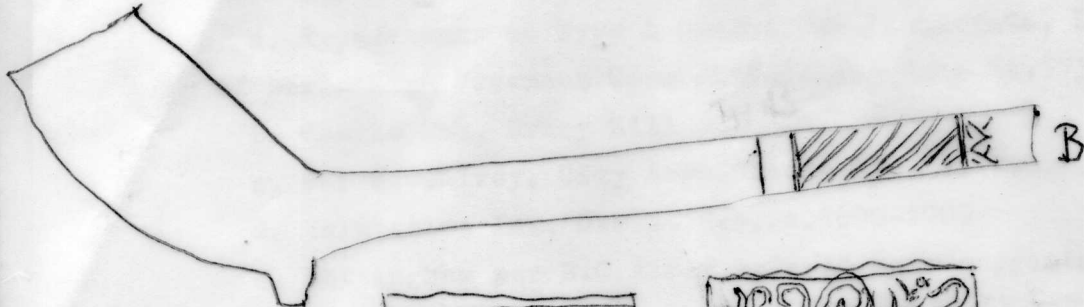
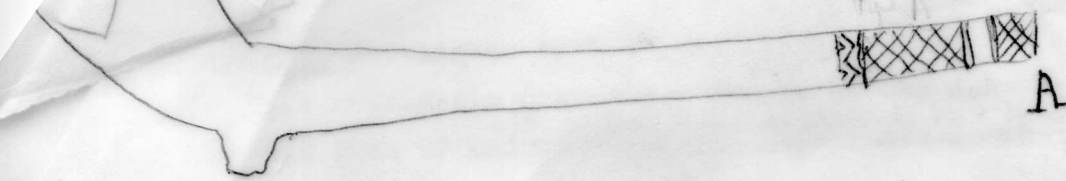
b. Castle Mus., Drury Hill

c. Per R.C. Alvey. City Arms. Looks late c.1750.

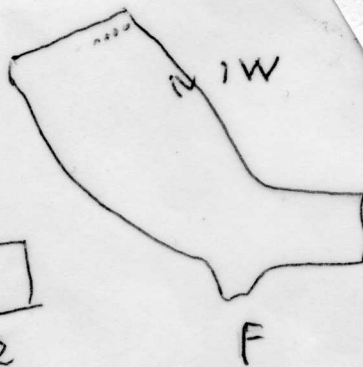
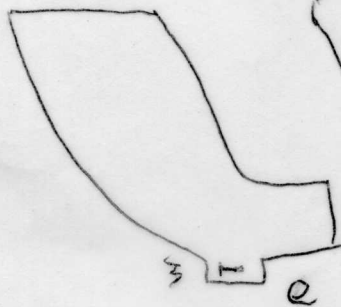
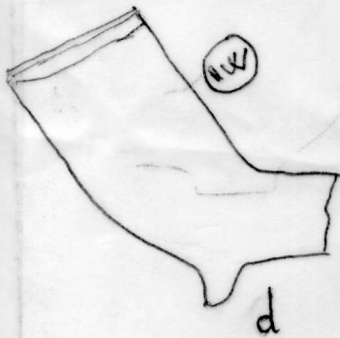
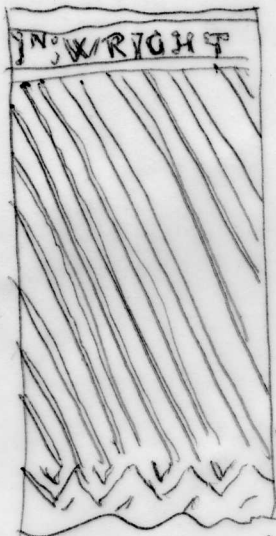
d. Salutation Inn, Castle Mus. c.1690-1700

e. Nottingham per R.C. Alvey splayed spur suggests a date c.1770.

f. Salutation Inn, Drury Hill. High Pavement Cess Pit.



a



IW
(10)E.

- 11. E.Anglian Type 10. Castle and Bridewell Museums, Norwich c1720-50
- 12. Grantchester Cambs. c 1660-80.
- 13. Ipswich Mus. I/W on spur. W/Ipswich/A on back of bowl. Mpoulds of John Wenham taken over by Webster Adams(3) Needham Market Fl 1810-53. Also I/W Carriers Lane, Ipswich.

(10)F.

- 14. Type 3 By.
 - a British Mus, Bragge Coll. Broseley Thursfield Doll
 - b and c. Deritend Birmingham excavations.
- 15. Stoney Stratford, per H.Oak Rhind.
- 16 a. British Mus, Bragge Coll cp. 10G Coventry e.
 - b. St Fagans Mus, probably from London.
- 17 Probably John Wiltshire(1) 1711-26. St Albans. Kiln at Holywell Hill.
- 18. Cork Excavations 7/64. Hard greyish white clay
- 17a *George St - Henel Hopshead 3 samples*
(10)G.

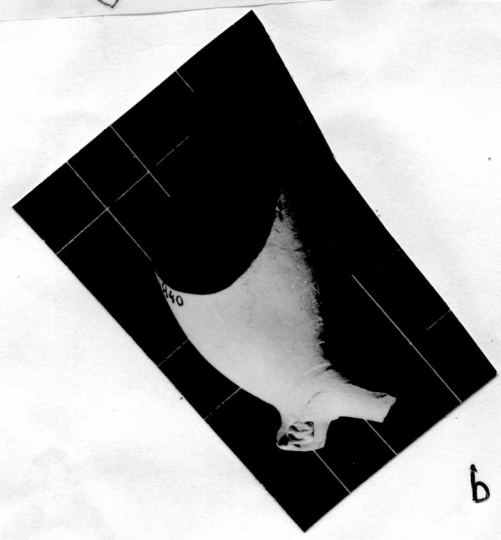
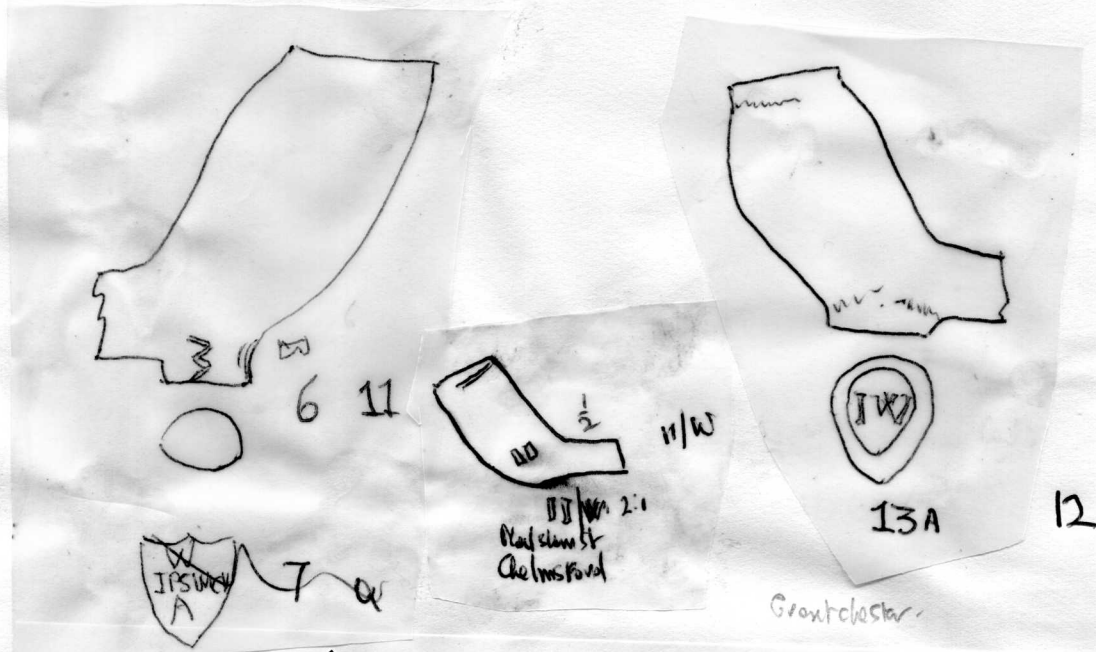
- 19. All Coventry Mus. except stated.
 - a also Queenhithe. c. also Alcester.
 - a-d drawings A.O. e and f. B.A.R.1. Date range 1630-50.
 - h1-h3. Brosley type pipes c 1670-1710.
 - g. Chinned southcentral types 58a and 58 c. 58b. London type 12/13.

(10)H

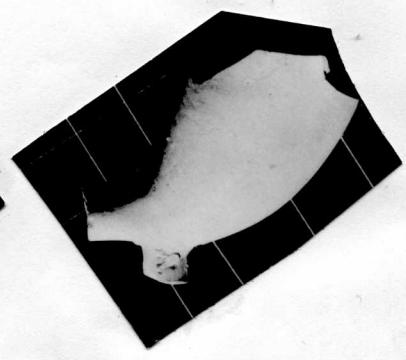
- 20.
 - a. Cheminant Coll c 1700-20. Also Atkinson Coll. b. Elkins Coll? unmarked.
- 21. a Lavington St, Southwark, Cuming Mus. Chiswick, Gunnersbury Pk Mus. Thames Mus Lond, Green Coll
 - b. Emerson Place Southwark. Bankside. Cuming Mus
 - c. Queenhithe, Cheminant Coll. Putney, Gunnersbury Pk Mus. Southwark, Garner Coll.
 - d e f Col Williamsburg see(10)I(photos)
- 22. a and b. Fill of Wm Heath's Kiln, Brentford. also c. 1740-70.

(10)I

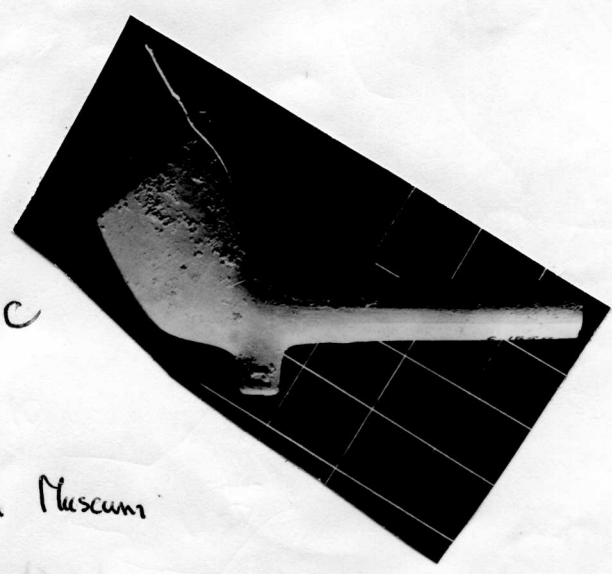
I/W pipes from Col Williamsburg per L.T.Alexander.



b



c



Ipswich Museum

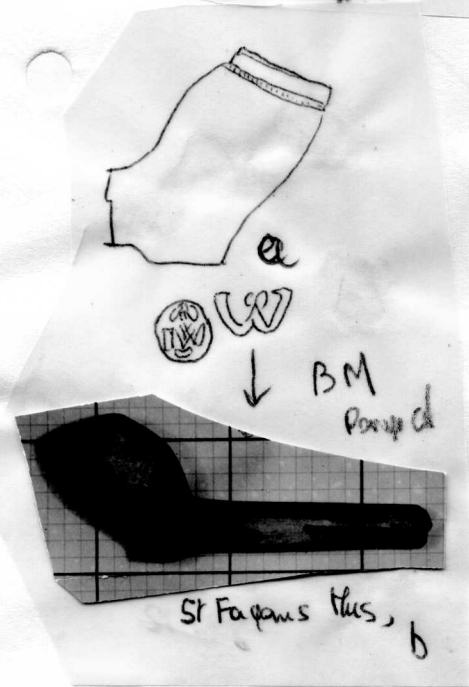
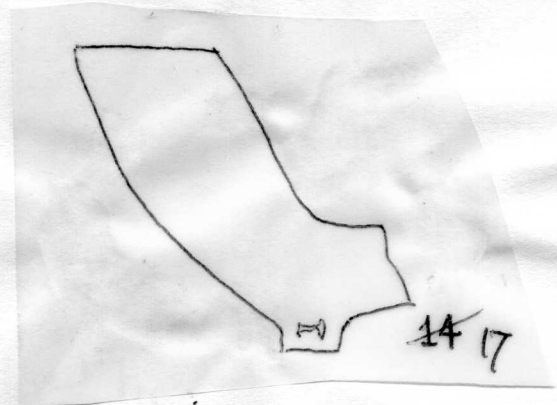
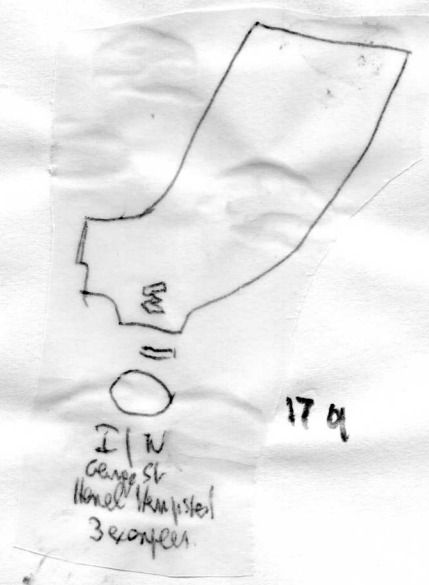
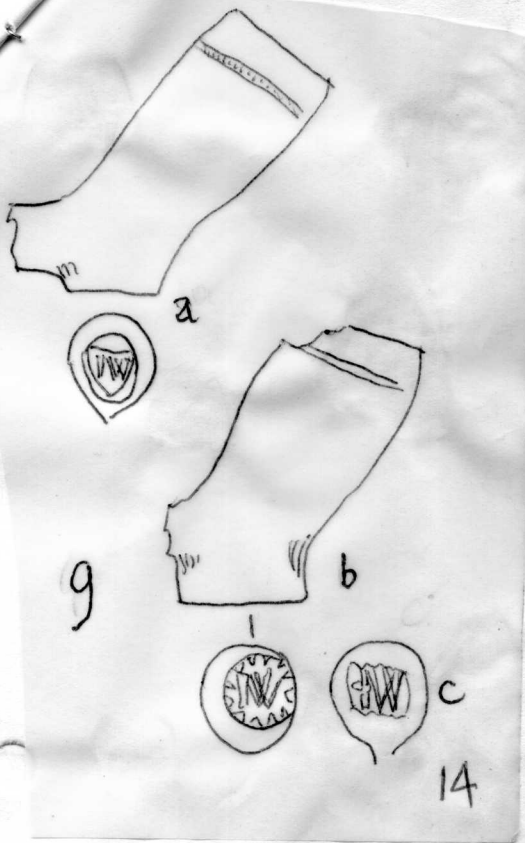
13

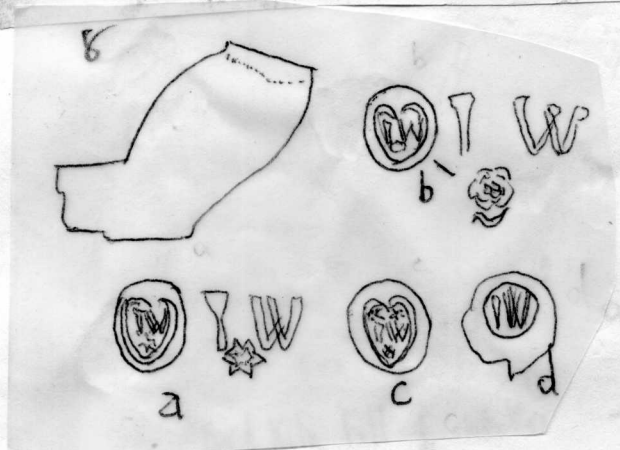
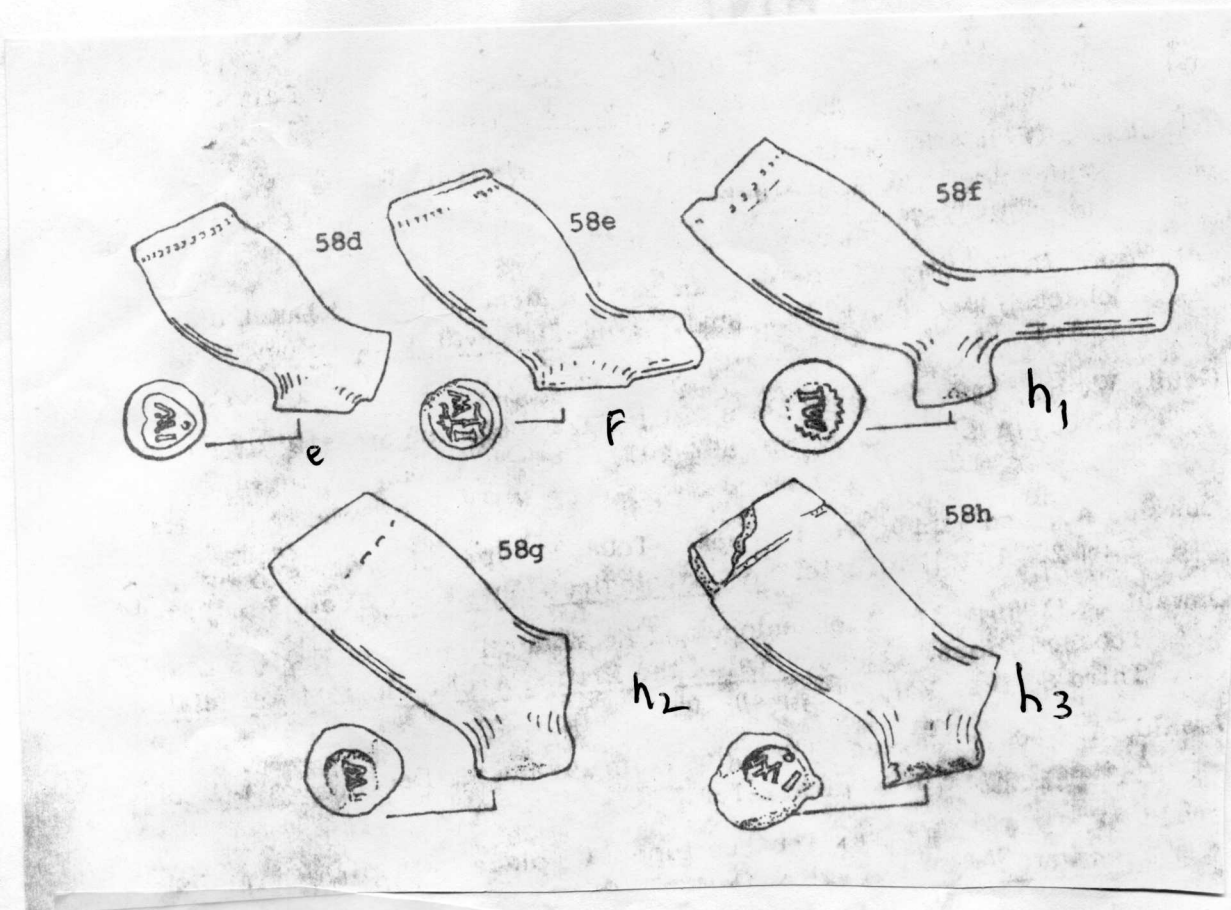
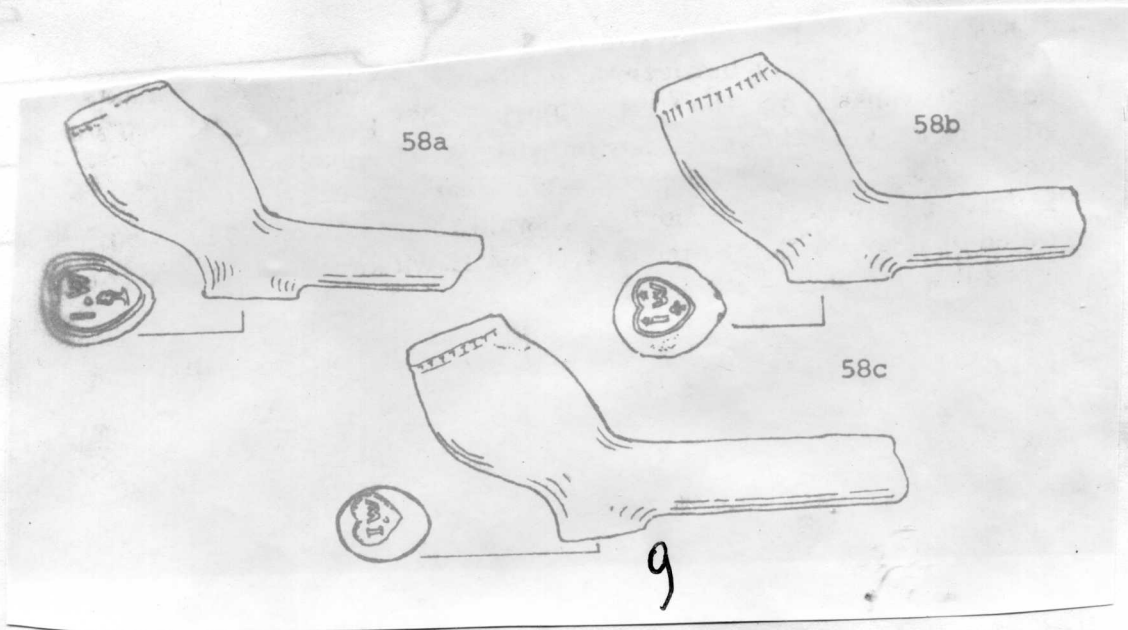
11

On back of bowl.



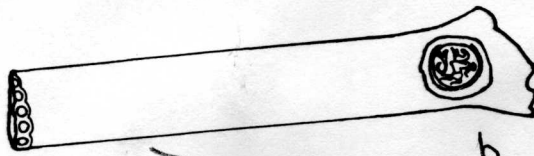
Moulds of John Wanklyn (1) 1820-50
taken over by Webster Adams (3)







2



b

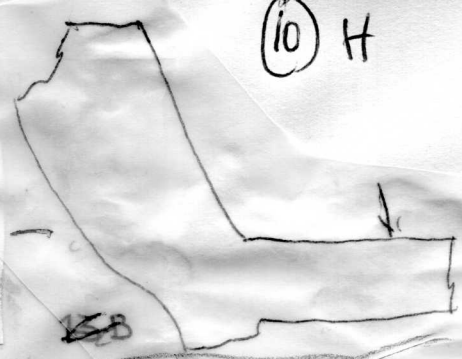


I/W. &
T/W f

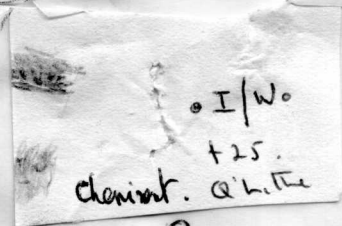


1w

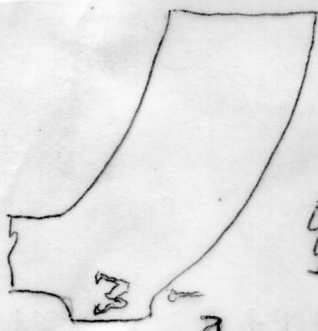
20 a



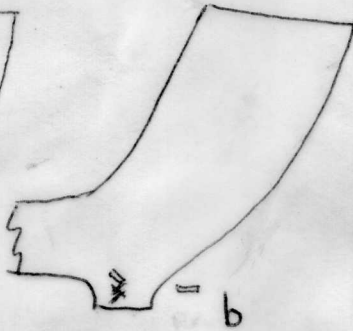
(10) H



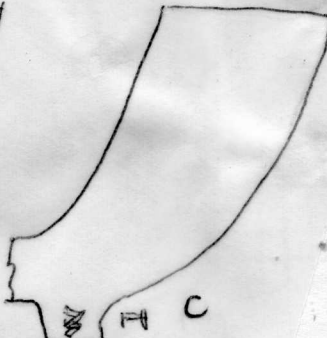
I/W.
+25.
chemint. a.l.t.e
9



a

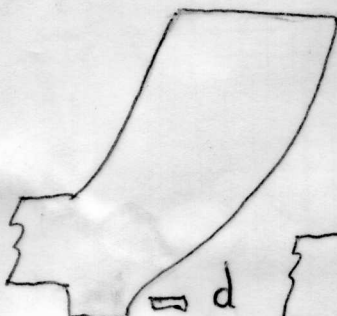


b

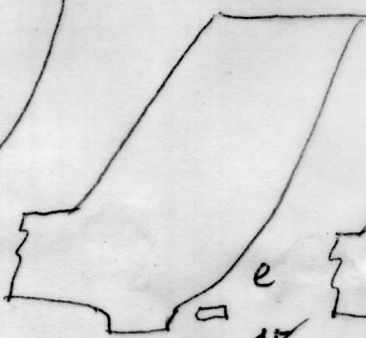


c

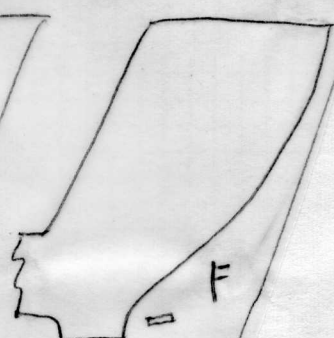
15



d



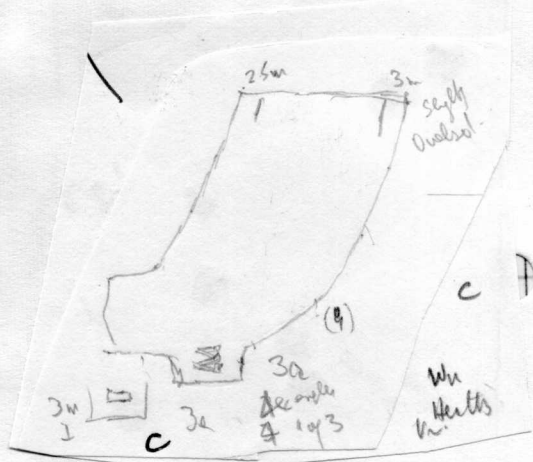
e



f

15

21



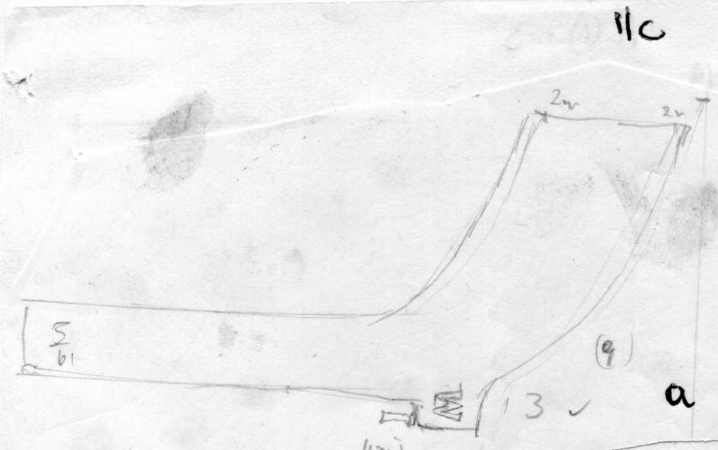
3w
1

c

3a
dec
4 10/3

Wu
Heaths

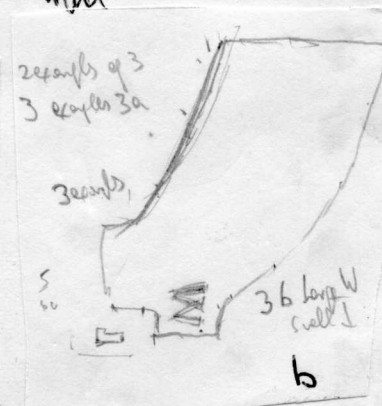
c



11c

a

Bratford



2 examples of 3
3 examples 3a

3 examples

5

6

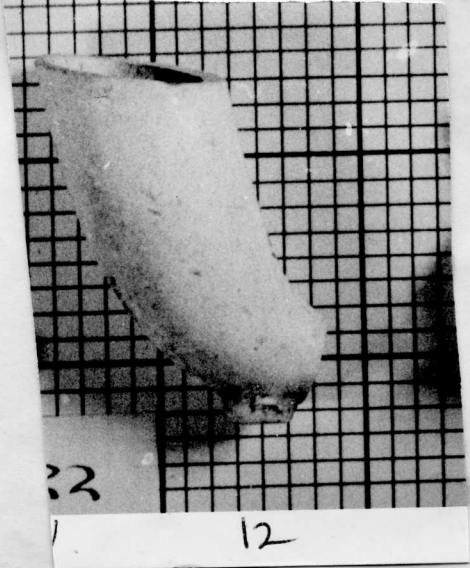
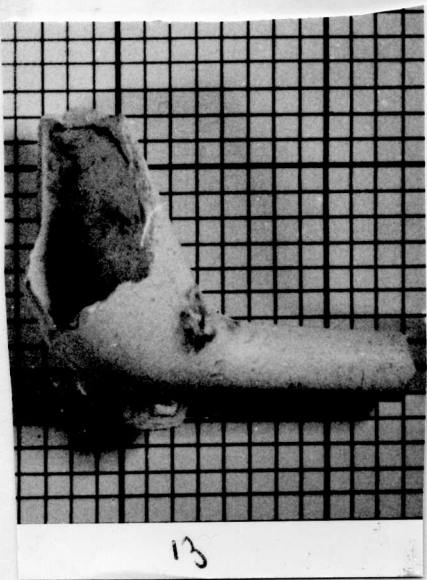
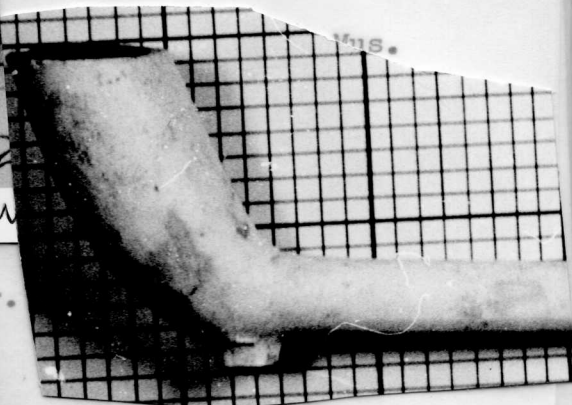
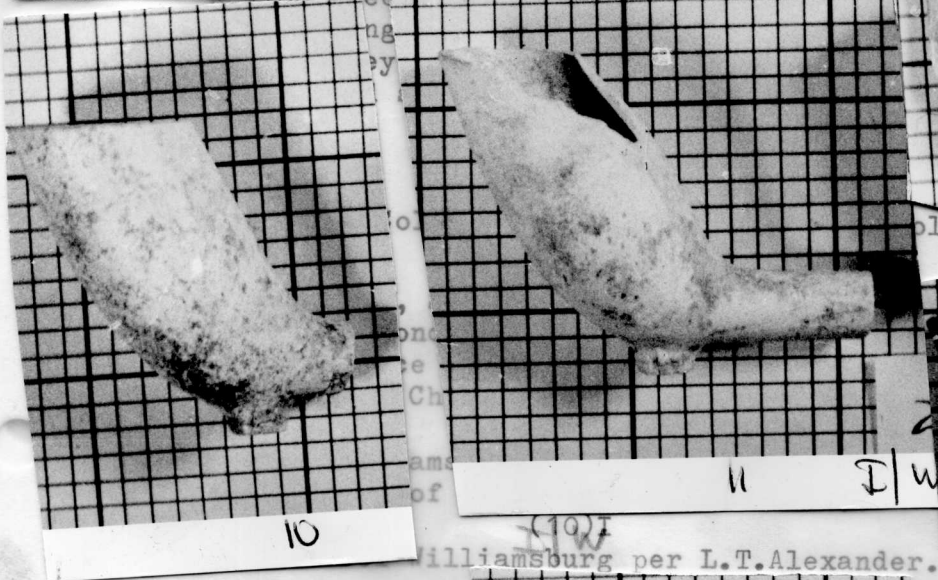
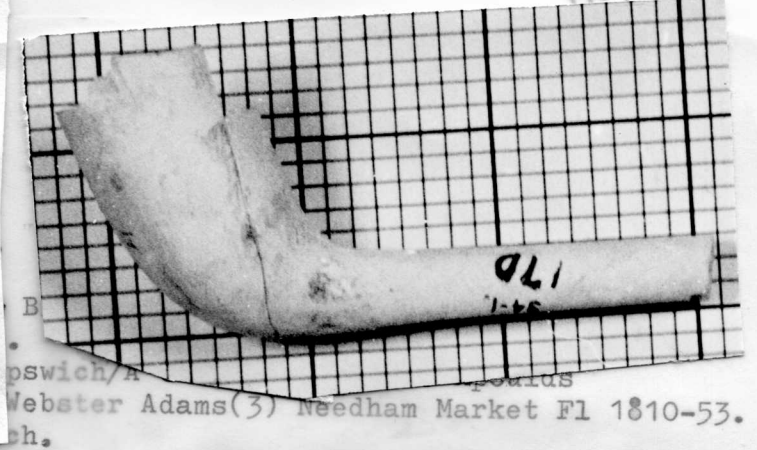
36 long W
cull

b

22

Bratford Kiln Fill ↑ -Wasters

Col Williamsburg
 I/W. Pipes. - Caleb Pusey Ho
 Williamsburg
 per L. T. Alexander.



I/W. Caleb Pusey Ho
 Williamsburg

IW

(10)J

13 I/W Armorials- Royal Arms of Hanover.

- a. Brentford Excavations. P.O.W.F. on front mould.
- b. Same mould as a. Chiswick, Gunnersbury Park Museum
- c. Pauls Pier Wharf, Cheminant Coll. Rose and thistle above supporters.
No front mould. Also without rose and thistle.(3)
3 different moulds in all.

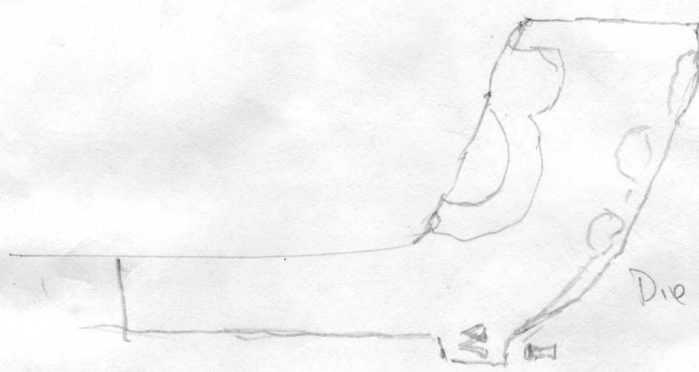
(10)K

Prince of Wales feathers.

- d. Brentford Excavations. Pauls Pier Wharf. In all 3 examples Brentford.
- e Brentford Excavations. Large reddish bowl. No front mould.
- f Pauls Pier Wharf. No motto.
- g. Probably but not certainly I/W Some sort of vessel on front mould.
- h. Much as e but different label ribbons and larger bowl Brentford excavations

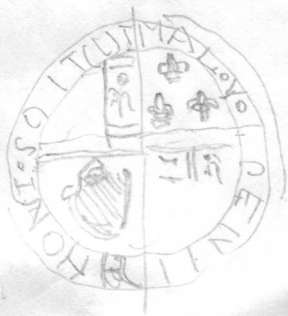
d also occurs from Chiswick, Gunnersbury Pk Mus and with F.P
over the arms from Southwark and London. Mus Lond.

2mm net oval



V. Thick Heavy Bal.
Thin Stem
High level Dec.
Sucked
Semi Pol
S
64.

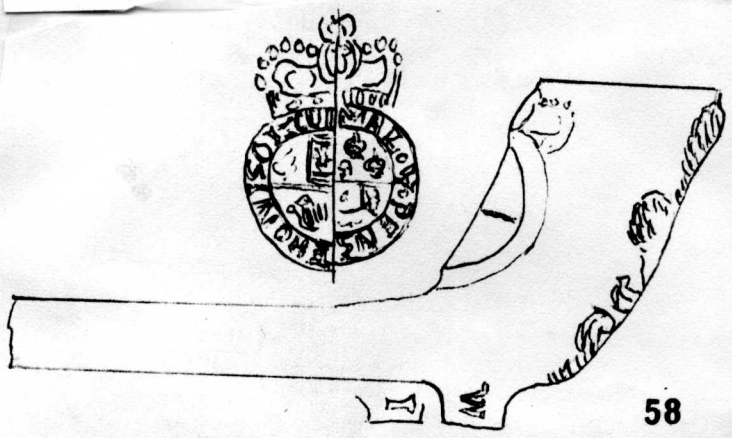
Die A



11a.



Brentford Fxcav. C18. R.t.
See Photo. a

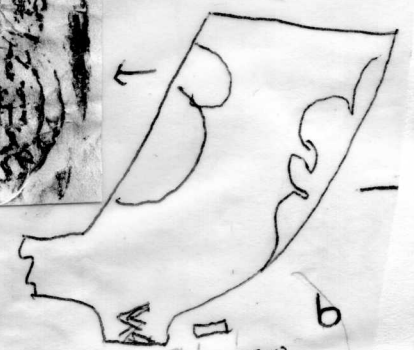
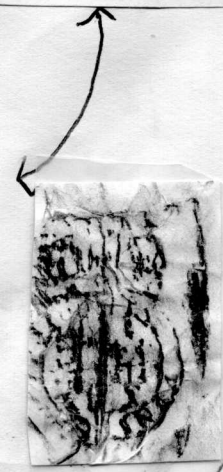


58

a

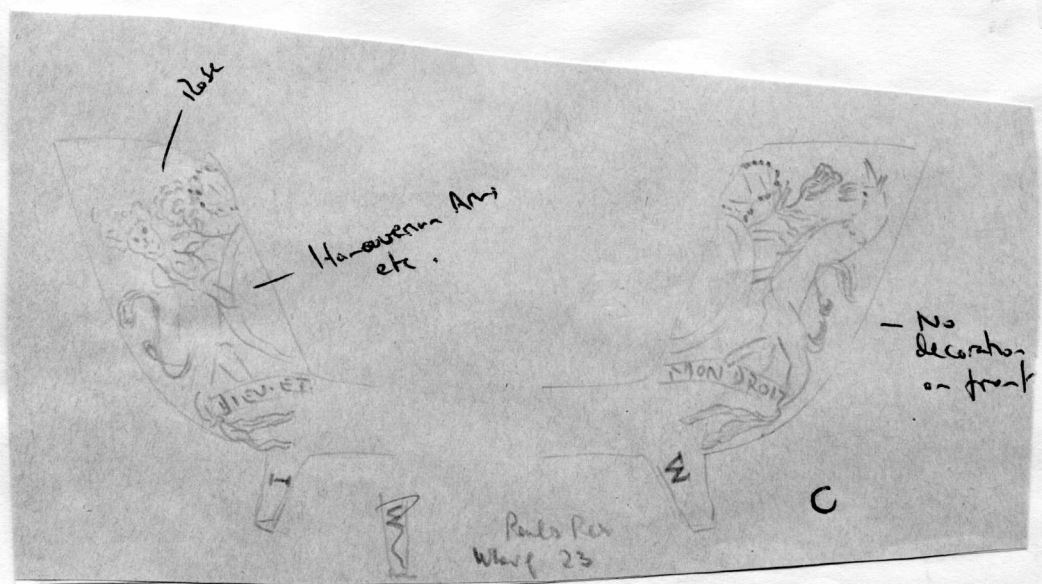


Brentford Fxc. Corbuse - See Photo



See Photos 18

Church Corner King St



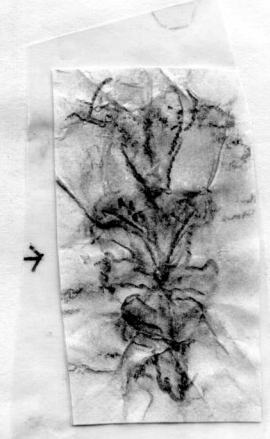
16x

Hammerman Am
etc.

2
decorations
in front

Pauls Rex
Wharf 23

c



Σ 2 samples
64 1 sed.
Chesed. M/Tm
Bnd.



First
Mud

↑ Brentford fxc. Pit B4. d

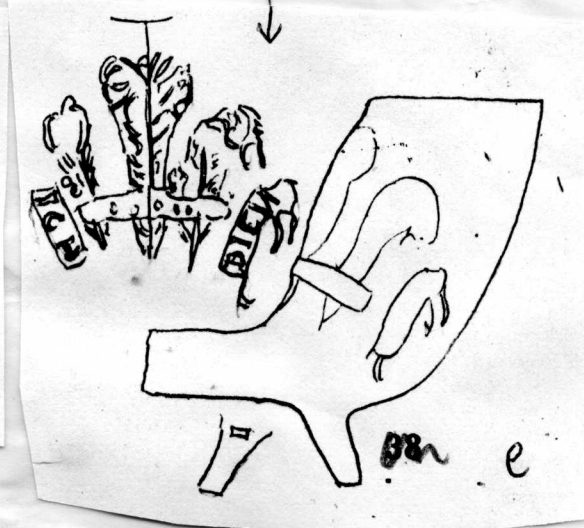
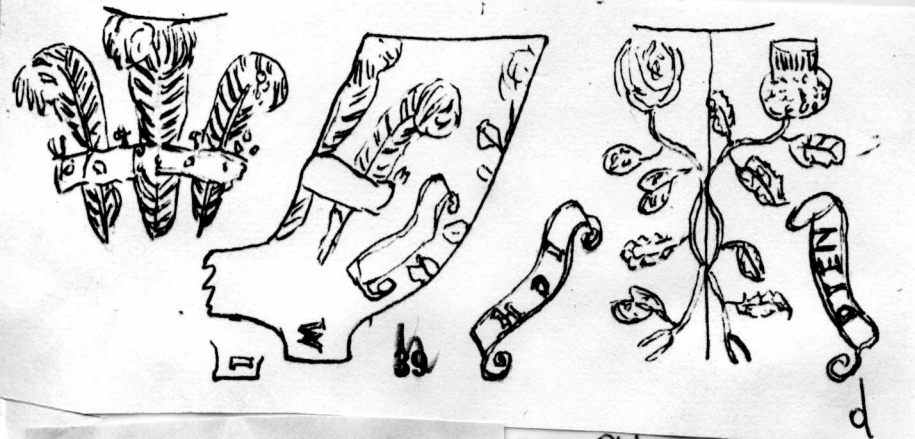


(10)k

4/5 64.

Small
Large Red Bnd
Thin
Sedest.

e



e

I? W.

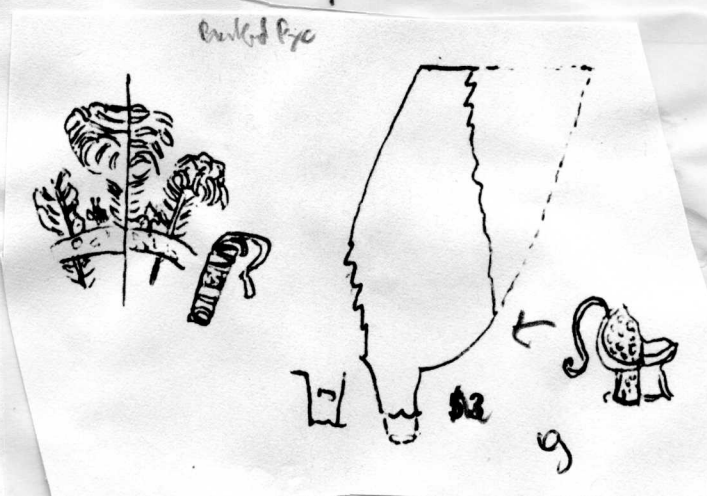
Chesed. M/Tm

See Photo.



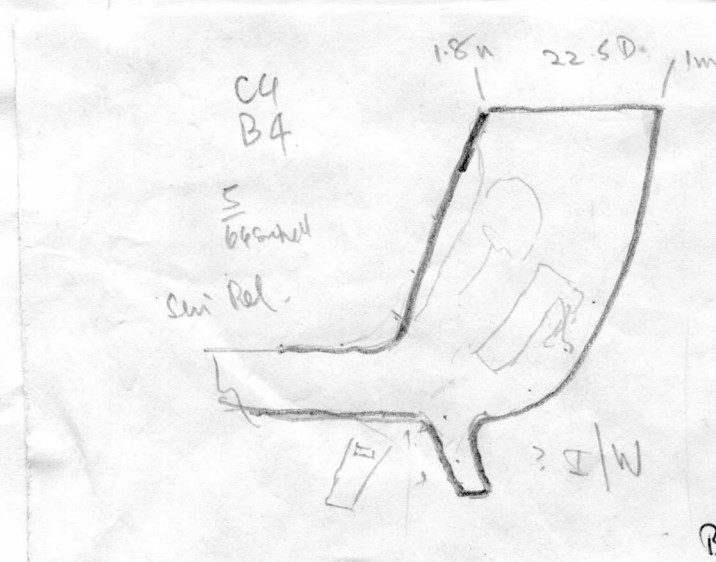
F

Pauls Per



Bentford fxc

g



C4
B4.

1.8 n 22.5 D. 1m

Σ
bentford
Semi Red.

? I/W

h

Brentford F+Gw, C4, B4.



- Bentford N.

23

IW
(10)W L

24

Probably James Woodroffe 1799-1817. Old St.

a. J. Woodroffe/Old Street. Back of bowl type 14G.

b. Mus Lond. Kew Sewage Works.

Also pipe J. Woodroffe/Island Bridge c 1880 Hammond Coll

25 Joseph Wild 1809 Horsley Down(d.bapt)
Queenhithe, Cheminant Coll.

26 John Williams Keny t St 1828-42
Cheminant Coll.

27

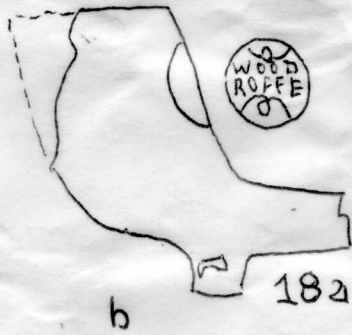
Type 13G. WILLSHAW/BEDFORD back of bowl. J/W on spur. Bedford see RW
IW may be a misreading or viceversa. The pipe marked RW from
Cheltenham was from a pre 1848 group but R. Willshaw is in
Kelly's Directory for 1869. Style of mark and City of London
arms suggests a pre 1840 date.

Fragment of C28
Wadding, Thames



Chemical 6b

a

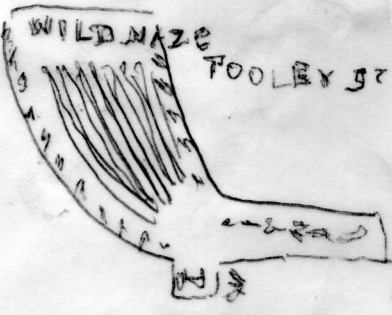


b

182.

24

(10) L



Chemical B.A.R. VI 99



WILD MAZE

TOOLEY ST.

Type 13G

1/w spurs.
Chemical Coll
around top of
t27 potted bowl

Queen's The
Maze presumably Maze
pods off Tooley's c1780



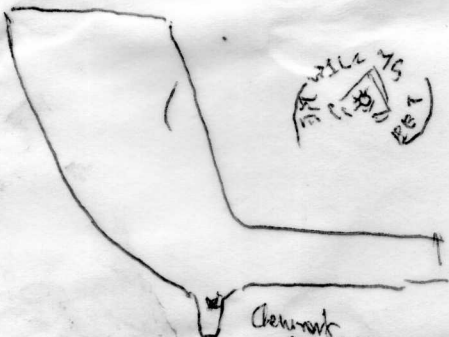
Iul/w.

John West
1937-51 Nottingham

Westminster

Tarmon Coll
B.A.R. IX.33

25



Chemical
B.A.R. XII 20

26



27

IW
(10) ~~1~~ N

- 28
a. Port Royal small case bb may be wrong.
b Mus Lond and Thames, Green Coll.
c and d. City Arms no spur mark analogy with b. c. Queenhithe, Elkins Coll
d Putney, Cheminat Coll.
e. London Atkinson Coll.
f. Gunnersbury Park Mus.
g. Putney Cheminat Coll altered spur mark
h. Lambdeth Bridge, Cheminat Coll. B.A.R.VI. 86.
compare E/W and G/W.

(10) ~~1~~ N

29. Probably all James Webb (3) 1832-75.
a. 12 Long Acre per F.J.Collins.
b. Lesnes Abbey.
c. Palace of Indusrty 1851. Atkinson Coll.
d. London Atkinson Coll.
e " " "
f. " " " and Gunnersbury Pk mus on type 14G
g. (1) Cheminant Coll on type as g(2) from Surrey. B.A.R.Vi
h. Cheminant Coll Crystal Palace Exhibition 1855.

(10) ~~1~~ O

30. John Winter 1832-4 Lewes and perhaps later Kingston on Thames but this more likely(2)
a. Otford Dump, Asson Coll. c 1880+
b. Keeve St, Lewes, Atkinson Coll
31. a. Oaklands Surrey, c 17760-90. B.A.R.VI
b. Arundel, Atkinson Coll c 1740-60.
c. Egham Surrey post 1820.

Also

Type 10G. I/W crowned. London, Atkinson Coll.

13G. I/W Merton Priory, S.A.C. vol 68. p.120. and Marshalsea.

John Williams Kent St London. 1828-42. 50 (m ext.)

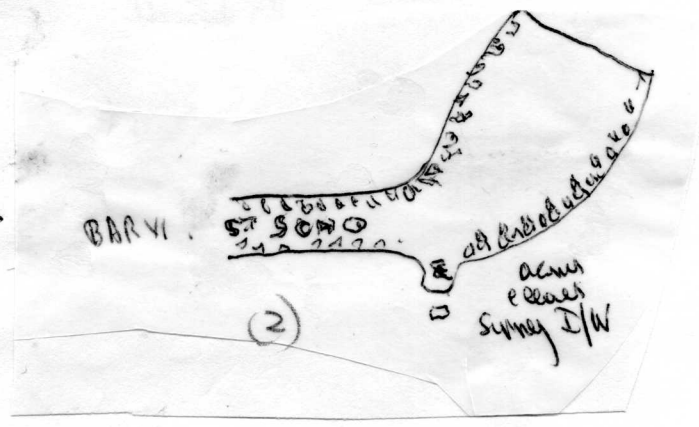
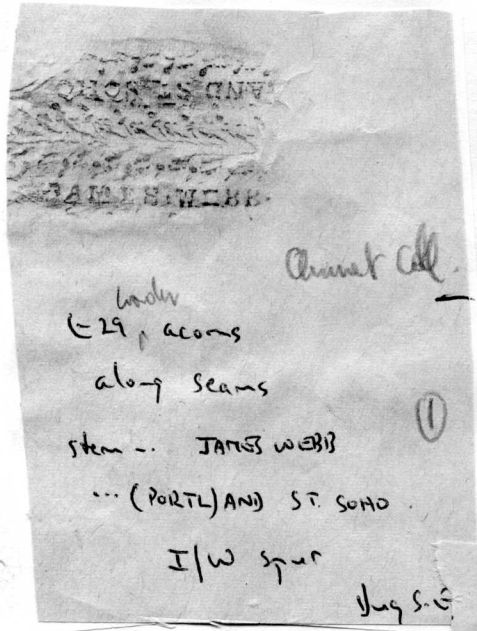
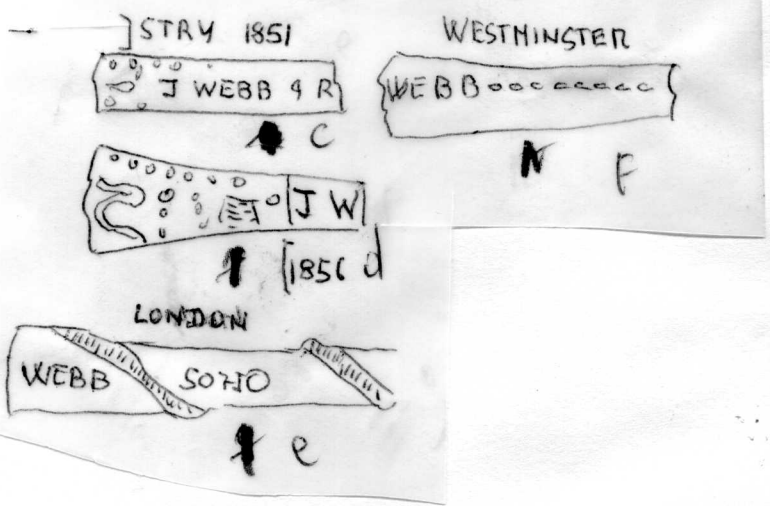
WILLIAMS/KENT St. relief on stem. Star on spur,
from a pit at Fulham, c1820-30. Atkinson Coll.

WILLIAMS KENT ST, LONDON - 17 examples, Ewell

WILLIAMS LONDON - (Rock of bar) Godalming

(10) IV

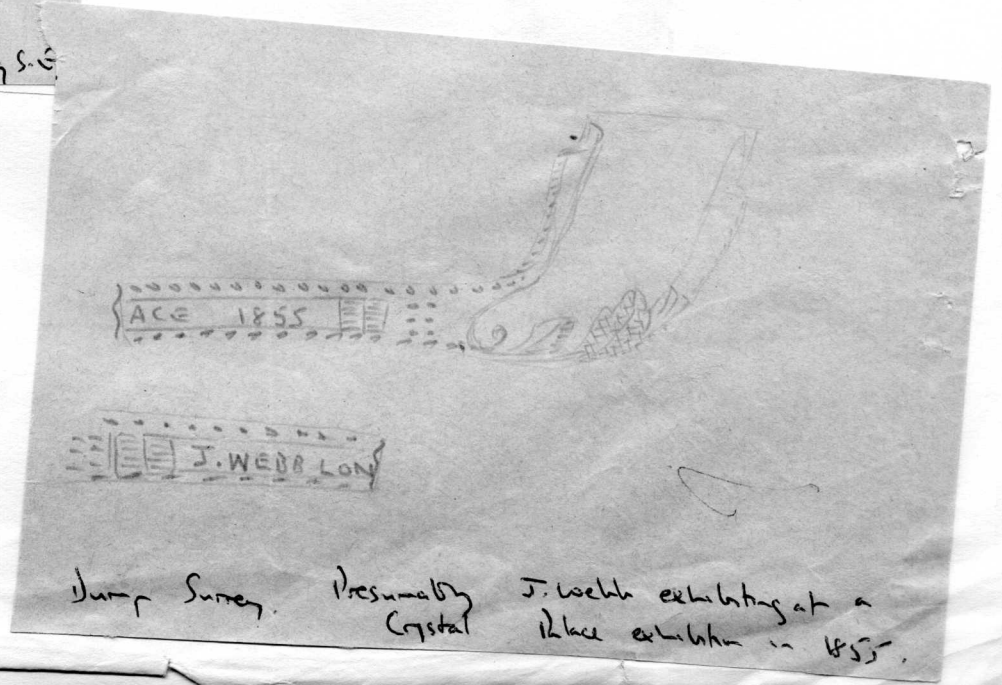
16

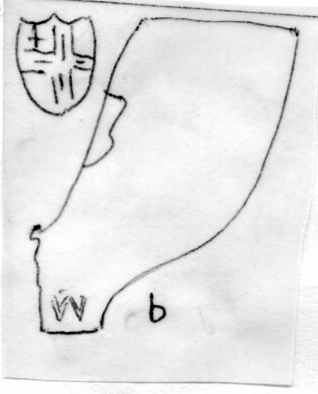


h.

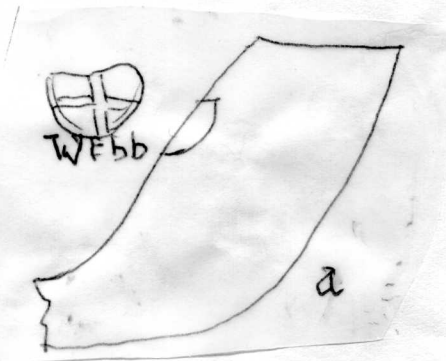
28

29





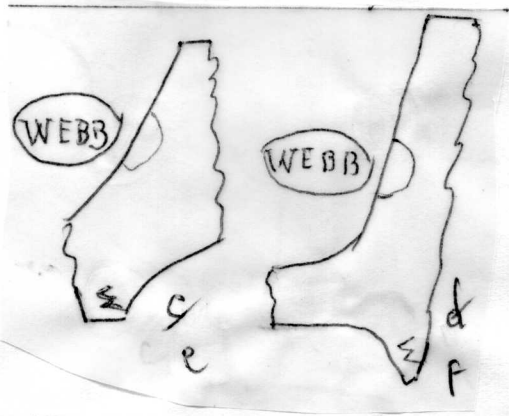
Quarrelle
? Spr. Road
Type 26 C.
Pebbles



City Area
Foreshore
Pathway
no spur
initials

Chenieret Coll

d Prob. Webb



Chenieret coll

Lambert's Bridge
Presumably
John Webb

← WEBB

h.

BARVI.86



WEBB
back of large
+ 27 m. 15 ft. m.
walls + stem. 201780
spur initials
altered
(unclear)
Putney
Chenieret Coll

9

(10) 14 0

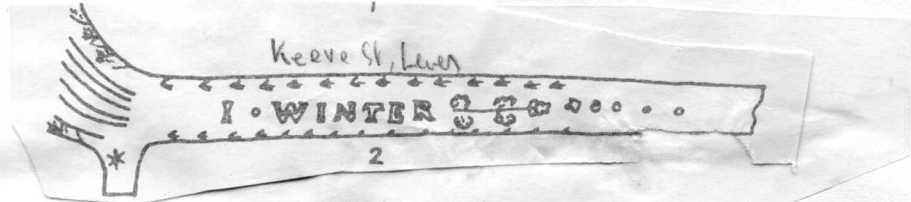
Oxford Dump:

KINGSTON

ESTON

a.

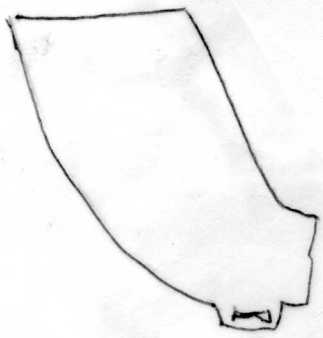
J. WINTER



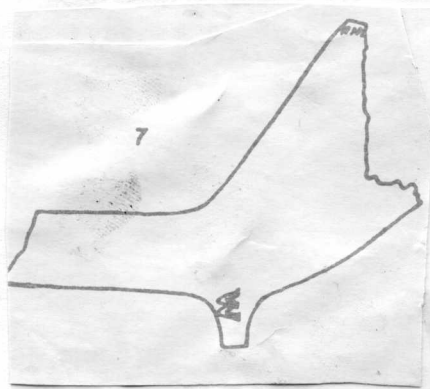
18c

b

30



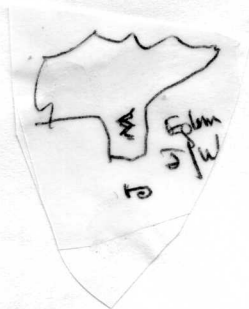
a
ool/bds



b

18b

31



c

IW

32 John Willis, Winchester 1718-57.

Incuse on stem Winchester Excavations, 7 examples.

32a

" " *Angelica Knoll*33 . Probably all John and Jane Wall Bristol 1619-61.

- a. British Mus, Pritchard Coll (No 11) *Leicester Museum, Billingsgate (Chinemat Coll)*
- b. " " and J & P 288, and Wills Mus. *Mormouth (2 examples)*
- d. J & P. 287 and Wills Mus. c. also and on b.
- e. " 290 and Heasall Coll
- f. " 288, 289.

g Llanmaes, Glamorgan

34 21. John Wilson 1707-22. Bristol

- a. Bristol Mus. 5/64.
- b. " " " J & P. 298.
- c. " " " 296.
- d. Port Royal, Bristol Mus.
- e. Port Royal

35 2.

- a. Bristol, J & P 291, 292. Hales Abbey. Port Royal
- b. " " 293. b.2. J & P 295.
- c. " " 294.

- 36 . a Col Williamsburg per L.T.Alexander. c. Port Royal
- b. Bristol J & P. 299. Port Royal

- 37 . a. Port Royal
- b. "
- c. "
- d. Oyster St, Portsmouth.

38

- a and b. Lamb St Bristol Oswald Coll.

32a ~~W~~ IW ~~W~~ *apex hole*

~~W~~ IW 1
Jaw
Jaw
Jaw
Womans

