



THE NATIONAL PIPE ARCHIVE

Registered Charity Number 1043065

Accession Number: LIVNP 2014.01.192.S1 (part 1 of 2 AS- IS)

Description: Clay tobacco pipe mark index, compiled by Adrian Oswald.

Comments: These are marks with a S surname initial. Arranged alphabetically by Surname (i.e. AS, BS, CS, DS, etc.). Each section starts with a typed list giving details, including provenance for each piece, which have an identifying number that is a simple sequence of numbers (i.e. 1, 2, 3, etc.) occasionally with sub-lists, if there are more than one example (i.e. 1a, 1b, 1c, 2a, 2b, etc.).

Key Words: Clay pipe; heel mark; Oswald;

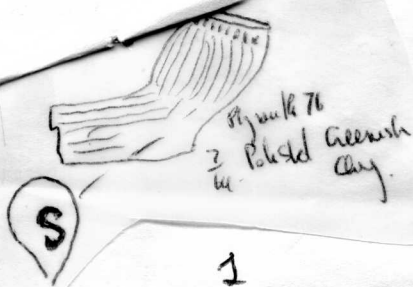
Any images in this PDF must not be lent, copied to another party, sold or reproduced in any way without prior permission from the National Pipe Archive and the copyright owner, if applicable. Reproduction or publication in any medium is expressly forbidden without written authorisation and should include an acknowledgement worded 'Courtesy of the National Pipe Archive' and quoting the relevant accession number.

S.

1 Incuse marks.

1. Plymouth. Polished 7/64. Greenish clay.
2. Soc. Antiquaries, London. Queenhithe, Elkins Coll. *See 6. left hand*
3. London, Bragge Coll, British Mus.
4. Trig Stairs, City, Cheminant Coll.
5. London from Arch.J.LVII. p230.
6. London, Cheminant Coll.
7. St Fagans Mus, probably from London.
8. Queenhithe, Cheminant Coll a and b.
9. Moorfields, British Mus, B.Smith Coll.
10. a Belle Vue, Weymouth 1650-70.
 b. Alcester Warwicks, No bowl.
 c. Binfield Album, Exeter Mus, probably incuse.

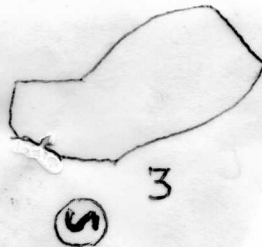
Dating 1-8. 1590-1620. 8-9 1640-50



1

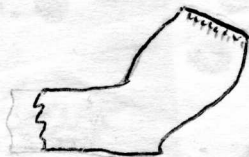


2



3

Trig Stairs
Presumably same material as your
BAR Fig 2, no 7 but different
type boot



Greenish
Clay

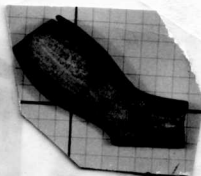
BAR 6

4

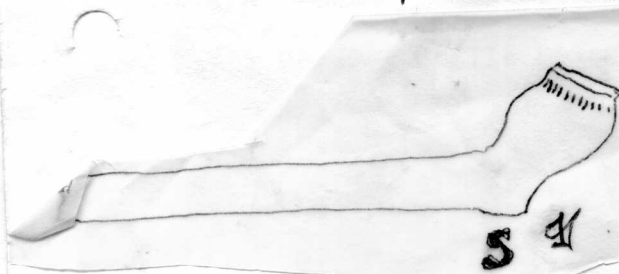
Large 2 type 2

S - case on base

cf fig 2 No 7
BAR

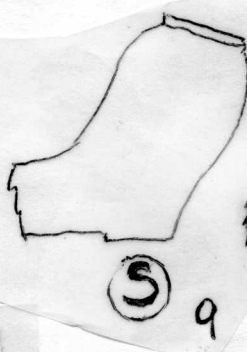
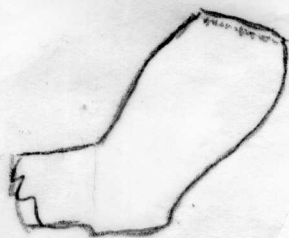


9 7



5 4

5



9

Wash Type 10

Greenish
Clay

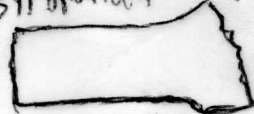
8 a

8 b



10

Belle Vue - Weymouth 1150 70



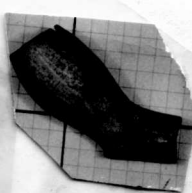
1
S a



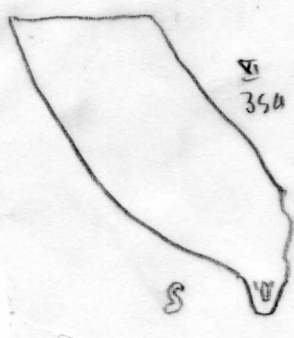
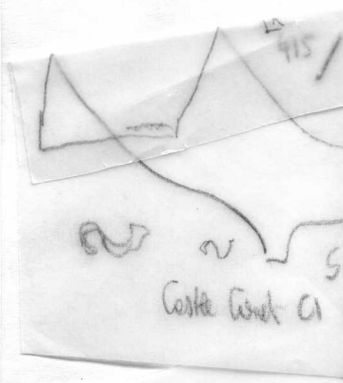
b



8 c



9.7



Crown/S.
Castle Cornet
GI.



S

1(A)

Relief Stamps

11. a Wroxeter Village, Shrops per J.E.Andrew.

b Elkins coll Queenhithe.

c Pauls Wharf London. Tatman Coll

d Wood Quay, Dublin. Shop St Drogheda

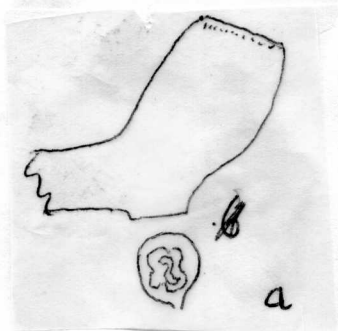
12. a London Cheminant Coll ~~xx~~ B.A.R.VI 20

b Rotherham Mus per S.Lawrence v. TS

13 Incuse stem amrks.

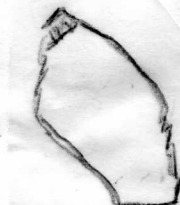
a Elkins Coll Queenhithe Type 5/7

b Berry Pomeroy Castle Devon Thin stem polished



relief mark on base only
 outer line similar
 to nonletting around
 bowls.
 Elkins Coll
 Queenville
~~ca 188~~

11



11c



Relief

Pauls Wharf
 Fabron. Coll
 B. D. R. 3



Wood Quay
 Slag St.
 Draghead

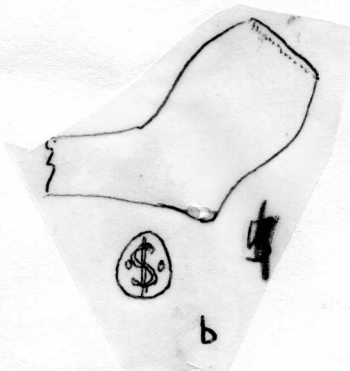
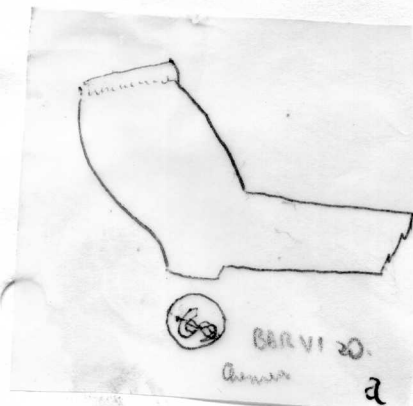
d



Kells
 Priory Kilberry
 Prehistoric

e

11



12

~~12~~

13 h.



Three plished stone
 Berry Pomeroy Castle
 Devon.



13b.

13a

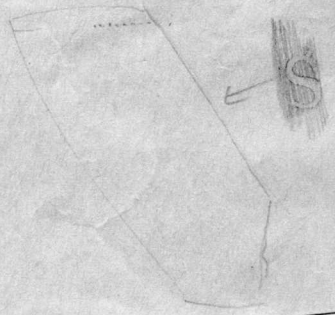
(1). B.

14. a and b same pipe. Cheminant Coll. Back of bowl incuse,
c 1670-90.
15. a. and b. Port Royal, Mayes Excavtions. 1700~~400~~ pipe dates
1680-1720.
16. SMITH/REG MA)ker. Thames, Cheminant Coll c 1860+
17. Richmond, Yorks, Hubbard Coll c 1820-40.
18. Cheminat Coll. Watermans arms, Pauls P. er Wharf,
v. B.A.R.VI and HB. GR and WS. Putney, Merton Abbey
- ~~19. XX.~~
Atkinson Coll.

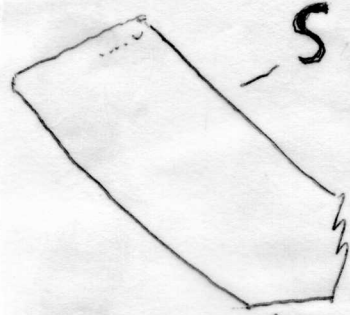
X

VB

Clement Coll



a

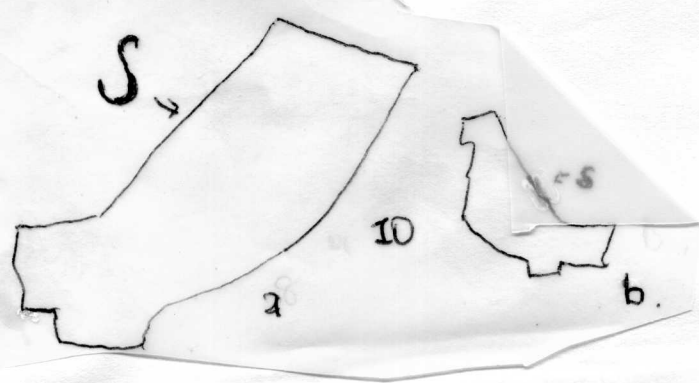


Clement. BARVI. 74.

b

~~14~~ 14

S



a

b.

~~15~~ 15

SMITH
REG. MA.

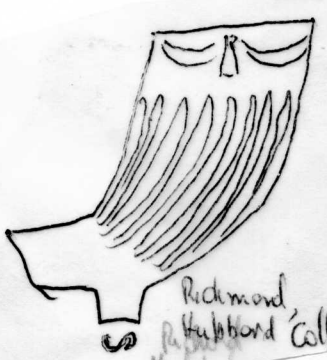


Lower portion

Clement Coll



~~16~~ 16



Richmond
Hubbard Coll

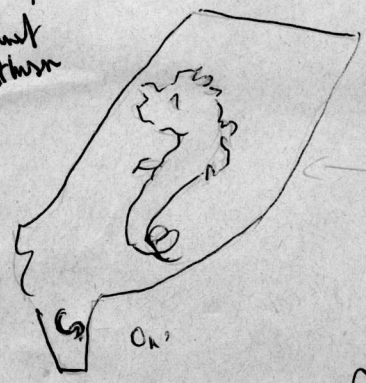
~~17~~ 17

Single S. Waterman's Arms. Badge as shown in
'London press'. Front cockered on
of surts. One inch at
So-by,
Pauls Pier

6 x 4 1/2 Pauls Pier

Thomas Clement
Nelson Atkinson

BANK
33



Ch.



Clement Coll

See W.B.
G.M.
W.S.

~~18~~ 18

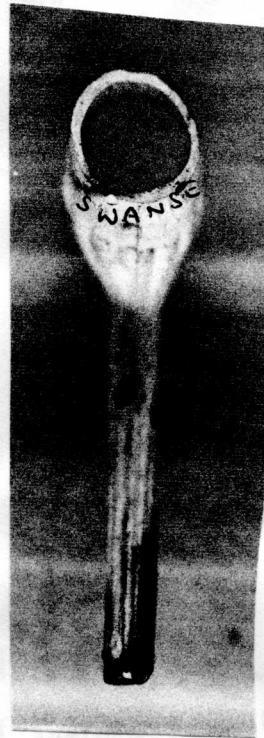
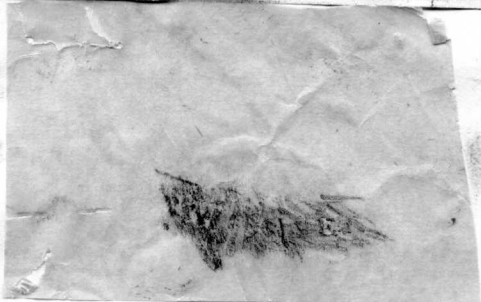
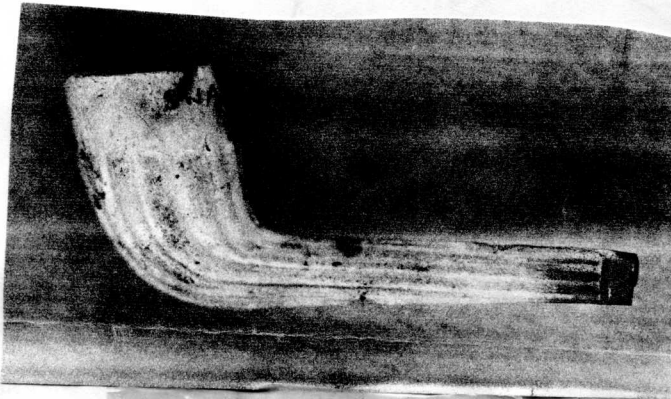
S

1(C)

- 19 Bedford "xcavations. Hanoverian Arms Scale 2;1
1069 type as 1003. and also 1007
- 20 Maker Spencer Hanley c1860+ B.A.R IX
21. Sherman & Long 1904 Lincoln High St. Cigar & Tobacco Mftrs.
Reg No 427108. B.A.R. IX
- 22 Stem Newark Excavations . Thso Smith 1881 Census aet 21 too late
Walker suggests Christopher Smith, Rotherham m. 1724.
- 23 Singleton & Cole Tob Factors Snuff makers Birmingham post 1860.
24. From a Farmhouse Rodway Warwicks. Inscribed Thompson Triumphant
Thompson Forever. He was Lod Mayor of London 1737
Arms of Lord Mayor.

Also.

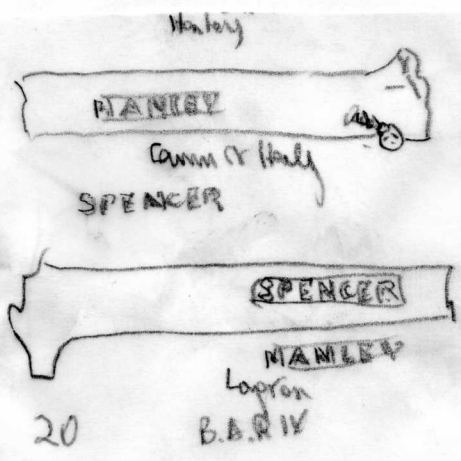
STEWART/LONDON c 1870-1900 and STEWART /Colouring PIPE Hammond Coll
SH & Co EDIN. c 1870-90 Hammond CO. v W.Stewart.
SMITH HENDERSON/EDIN. Stagshead crowned on bowl Edinburgh Mus.
SAVELS TOBACCO 80 back of bowl. Merton Prioty SAC LXVIII p.120.



Chemnant Coll

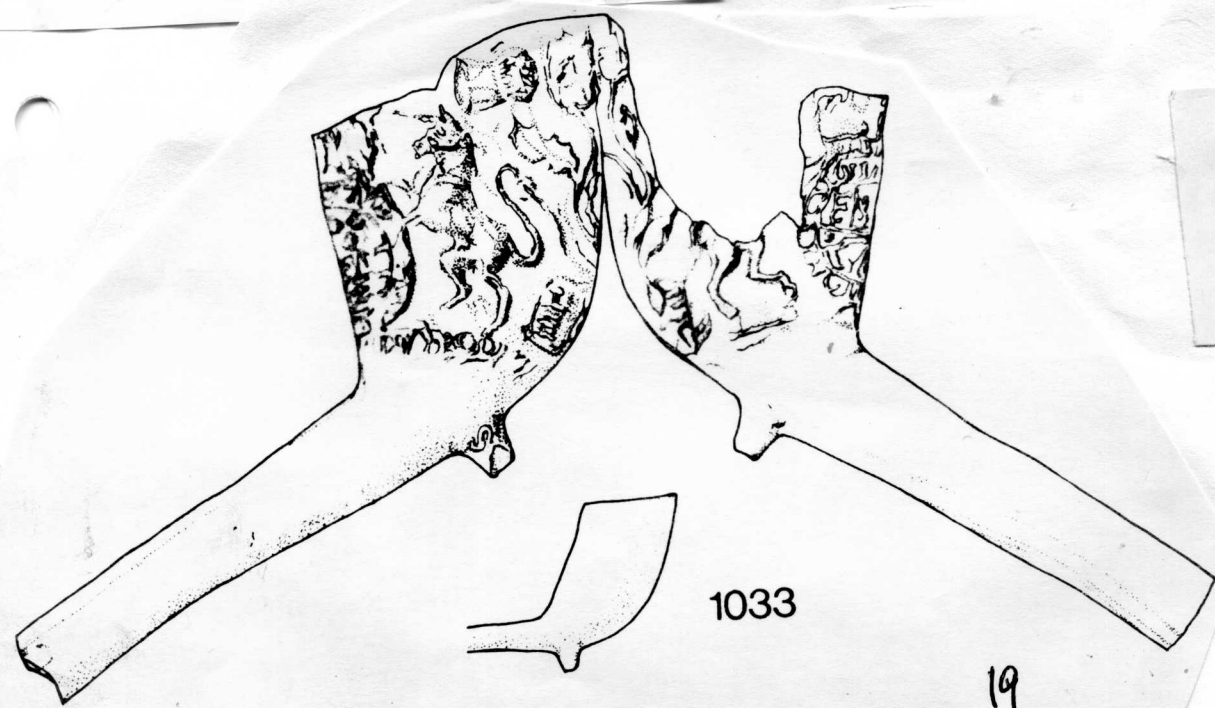


1904 Sherman + Long 1904 Cope
 Lived in - Lived in 1904
 427018.
 312 1/2
 21



20

Lapron
 B.A.R.IV



1033

19

\$
 1069
 1007

1833

27

Relief-moulded clay pipe bowls, scale 1:1.

Bedford Excavations

Walker suggests
 Christopher Smith
 Rotherham 1724(m)



22

From a farmhouse
 at Redway, Warwick
 Inscription reads Thompson
 Triumphant, Thompson for ever
 Arms said to be those of Lord
 Mayor of London - 1737
 S. on spur.

From Mo. R. Hall.



24



23

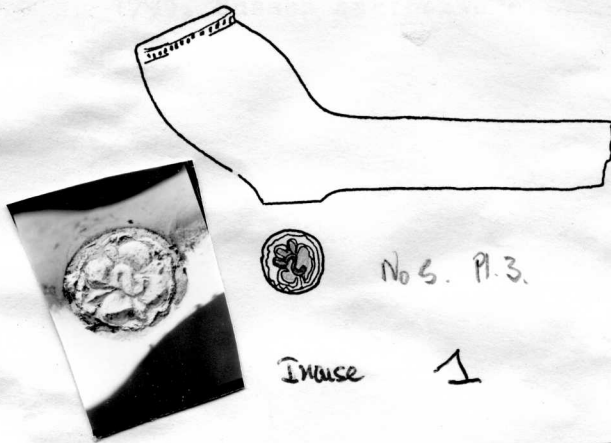
S.

1 (D)

Irish S marks all relief.

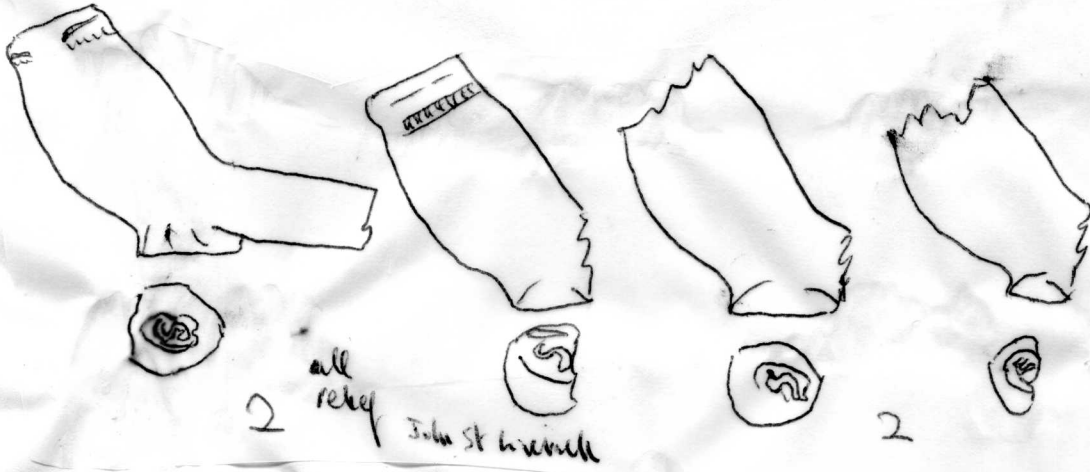
1. Waterford-The Deanery
- 2 John St. Limerick
- 3 Merchants Rd. Galway.

The Deveney - Waterford City



No 5. P. 3.

Inuse 1

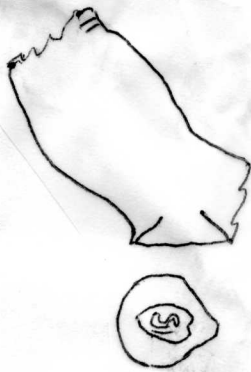


all rehy John St hunch



John St hunch

2



2



Merchants Pol
Golum

3

AS

(1)

1. Possibly Abraham Shutton 1659 Finsbury P.Lists. Fl therefore 1630-60
 - a. British Mus, ~~London~~ B.Smith Coll. Coleman St.London.
 - b. London British Mus, Bragge Coll.
 - c. " " Bousfield Coll.
2. a. Southwark Bridge, Cheminant Coll
b. Queenhithe, Atkinson Coll and Wills Mus ,Bristol from London.
Marks in relief 1670-90
3. A/S crowned. London Atkinson Coll
b and c. Williamsburg per L.T.Alexander, b plain c crowned.
c 1680-1700

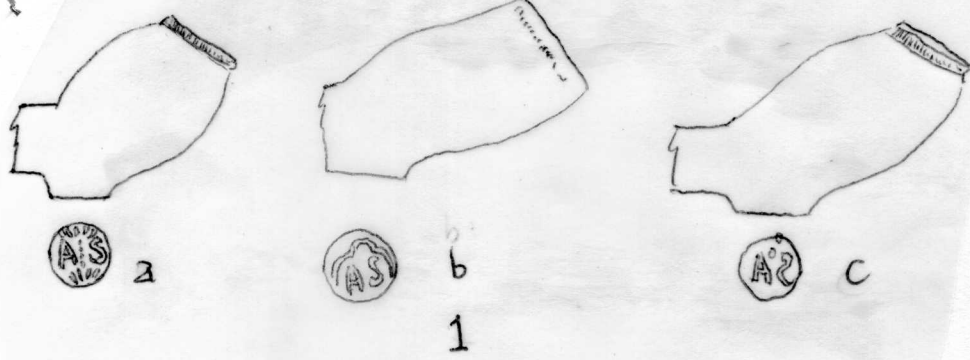
A possible maker for 2 and 3 would be Anthony Sidwell 1694 Oath of Allegiance and 1704 Fran Roberts his apprentice by t/o from Salters Co. London Freedom recs.

(2)A.

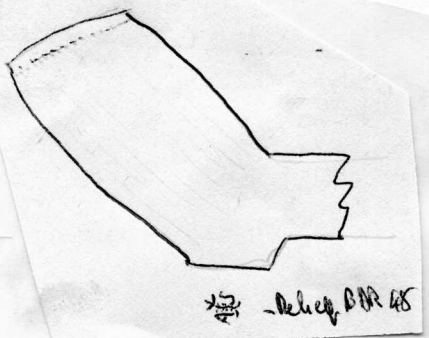
4.
 - a.A/S. London from Thames, Green Coll,Mus Lond Meriden Estate,L.C.C.
~~xxxx~~/ Williamsburg. (all crowned.
 - b. A/S(plain). Port Royal
 - c. Waterbeach, Cambs.
 - d. ~~Wx~~ and f. Williamsburg.
 - e Bermondsey Excavations.
Additional A/S uncrowned from;Rosewall, Virginia, Thames, Mus Lond.
Gunnersbury Pk Mus, Wills Mus, Bristol(Harris Coll), Chiswick Eyott
(Marshall Coll), Jewel Tower, London, Hammersmith,Rippon Coll, Exeter Mus.
7/64. Possible makers. Abraham Shephard. 1721 too J.Elkington app. Fl
perhaps c 1715-45. Abraham Sands Free 1725. Fl 1725-55.

(2)B.

5. Alf Squires, New Cross c1840-60. Cheminant Coll
6. ⁶⁷
Possibly Ann Smith Bristol.1672-96.
London G.H.M. 2 more from Pembroke, St Fagans Mus, (Photos)
7 From Bristol, Birmingham Mus see No 2. If Ann Smith about her last
line c.1700.
8. A Spaul 1909 67 Grange Walk Bermondsey. B.A.R.IX.

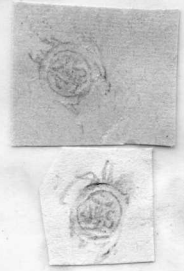


b
1

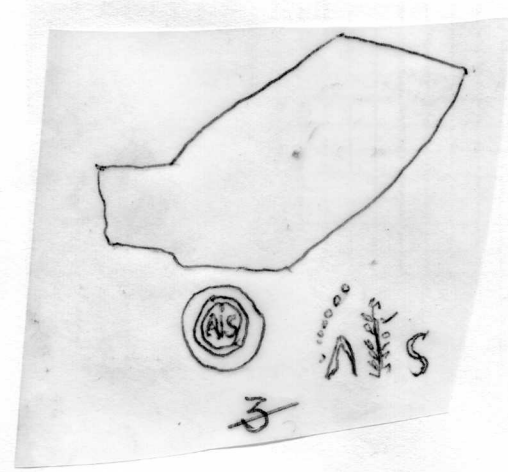


Relief, BRR 48

Southwest Bridge
Cheminot col
Relief



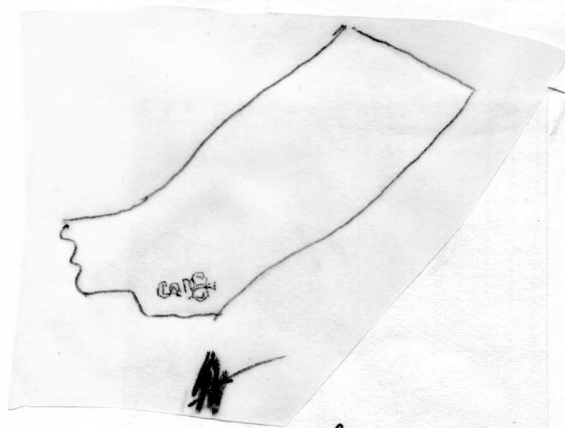
2



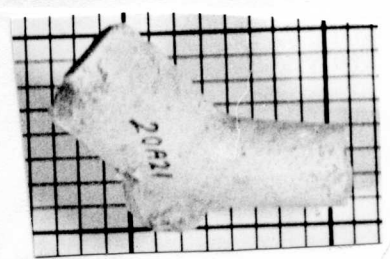
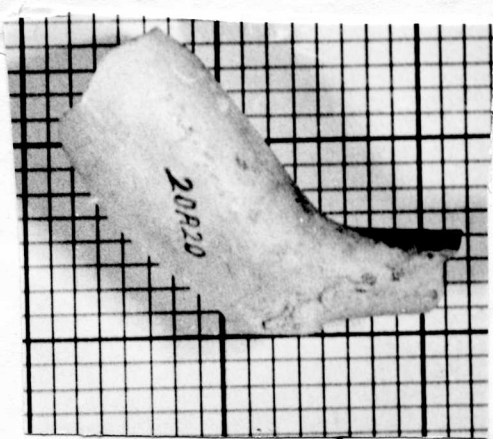
3

b

a



a

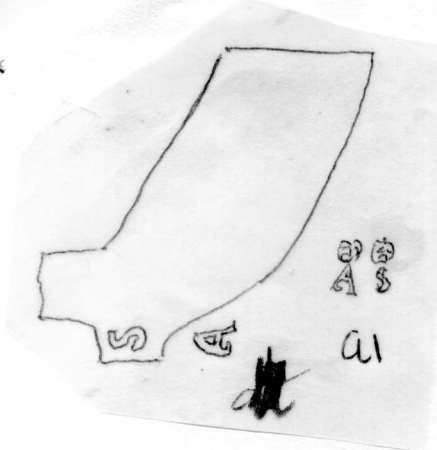


b

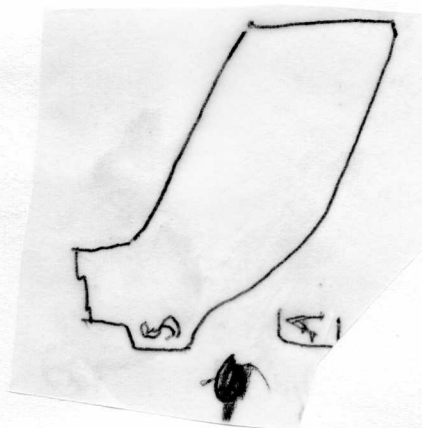
c

3

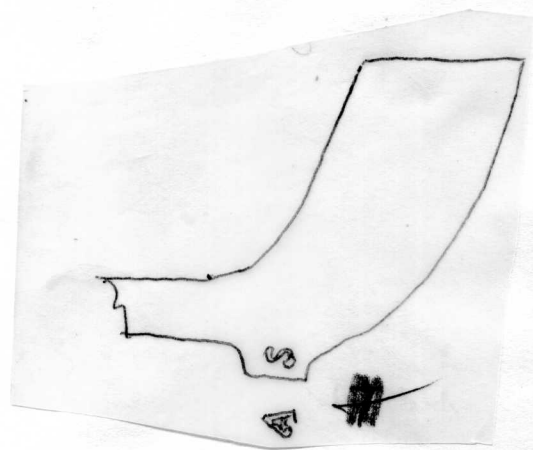
(1) (2)
A



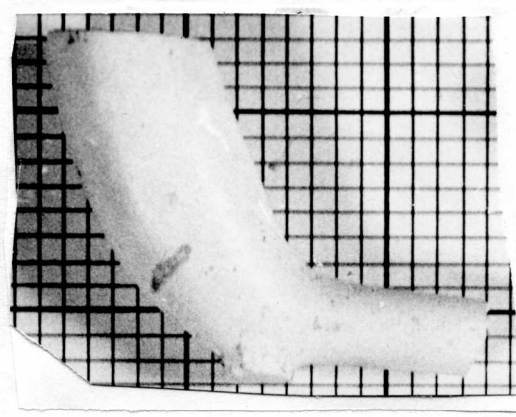
a



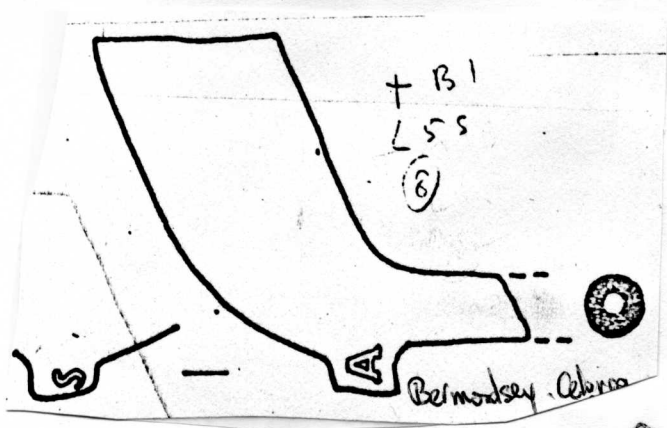
b



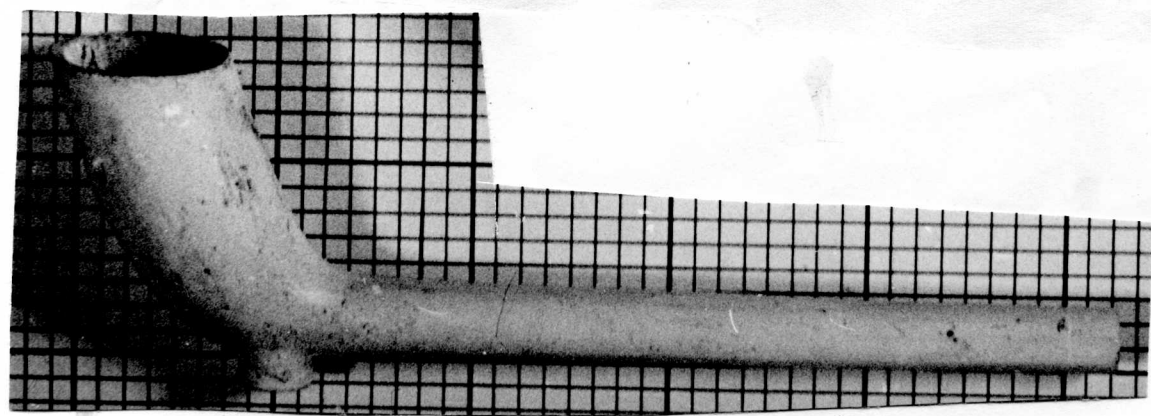
c



d

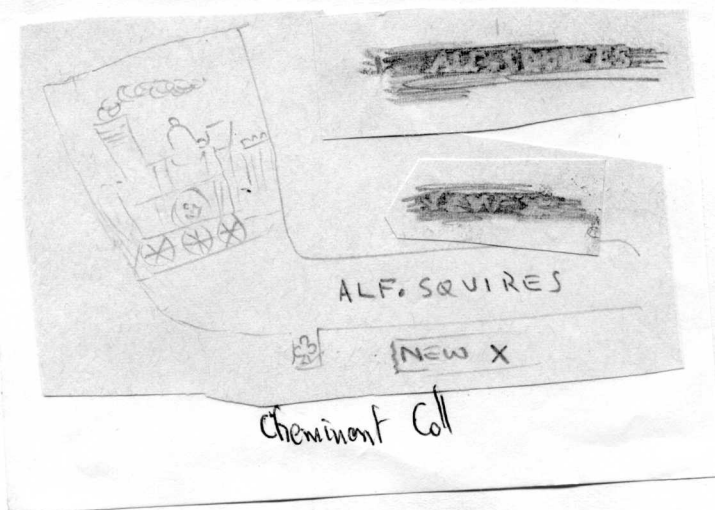


e

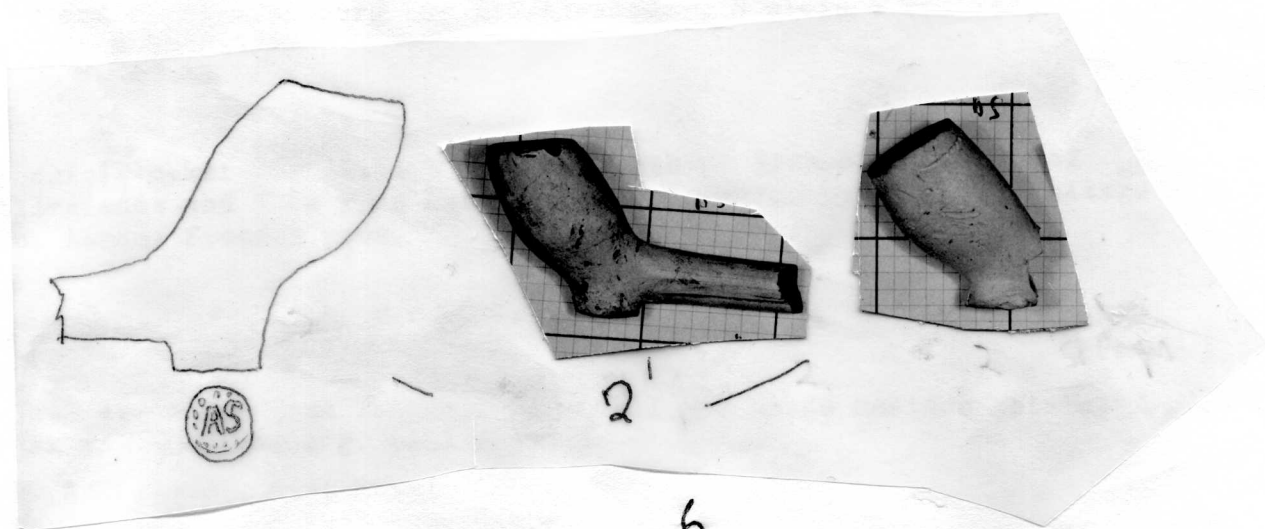


4 F

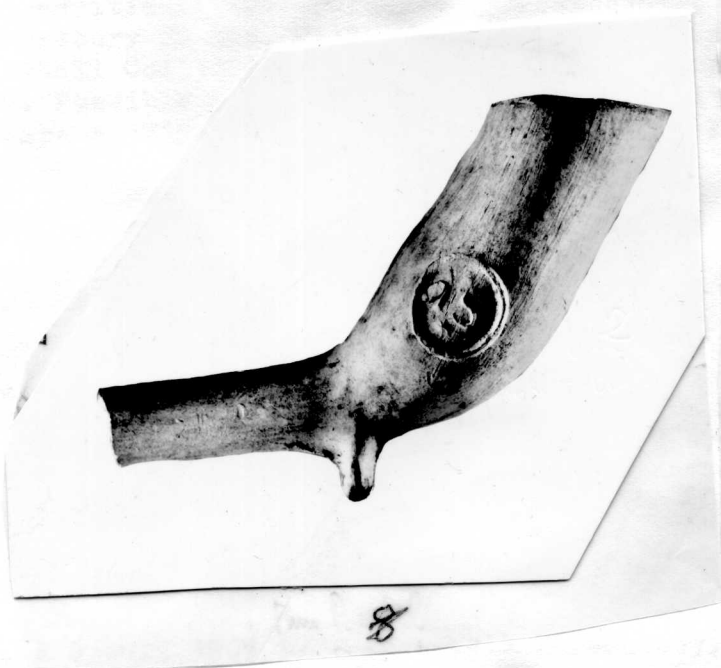
(2) B



5



6



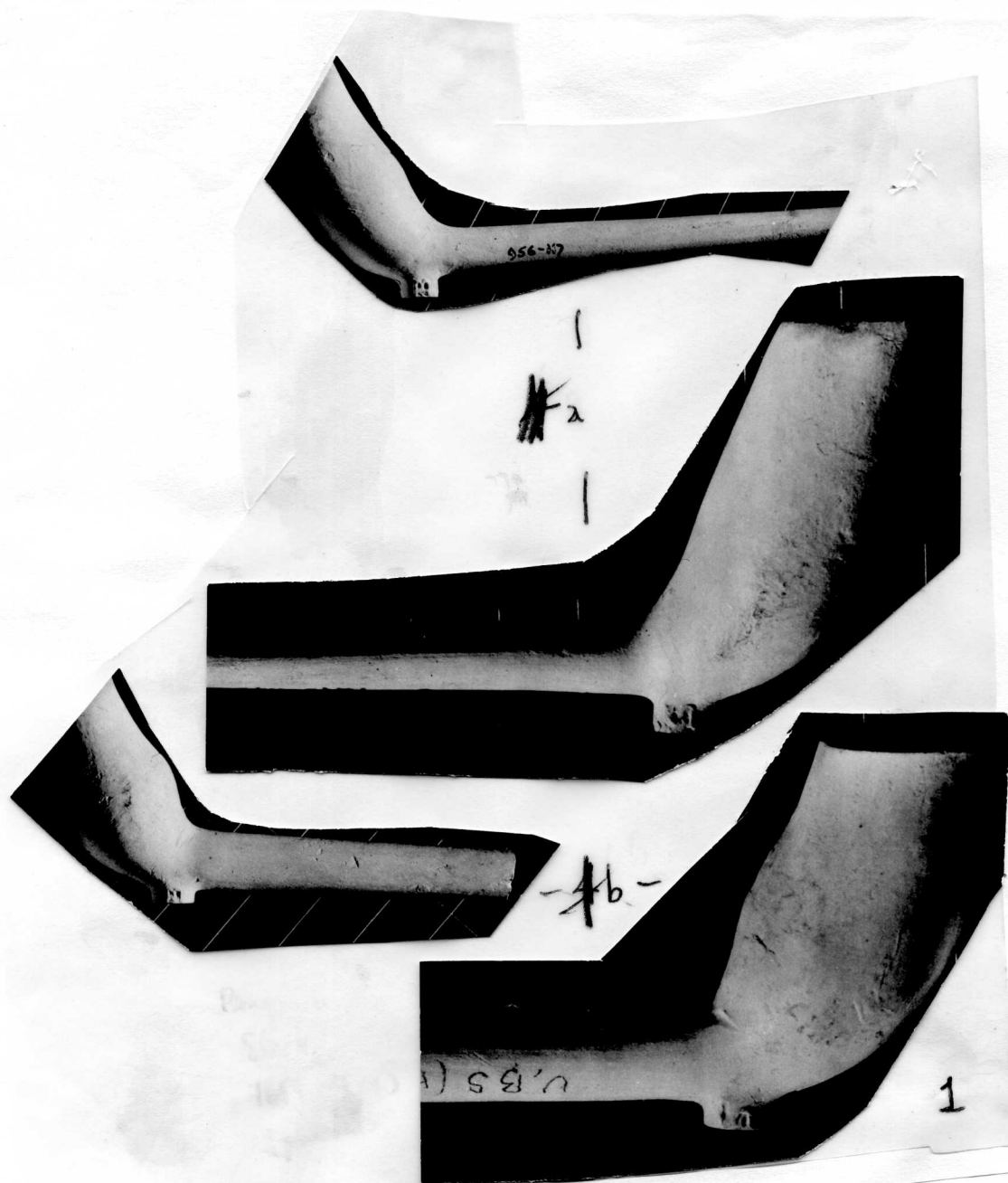
7

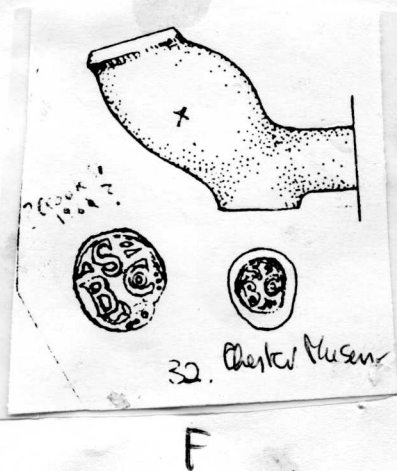
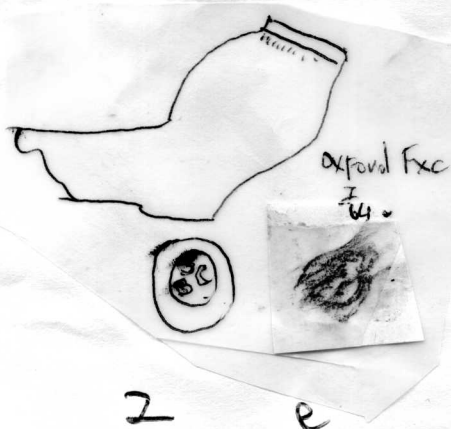
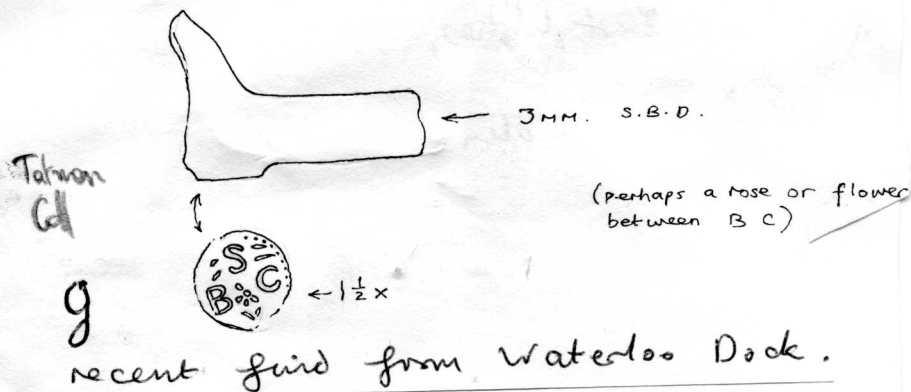
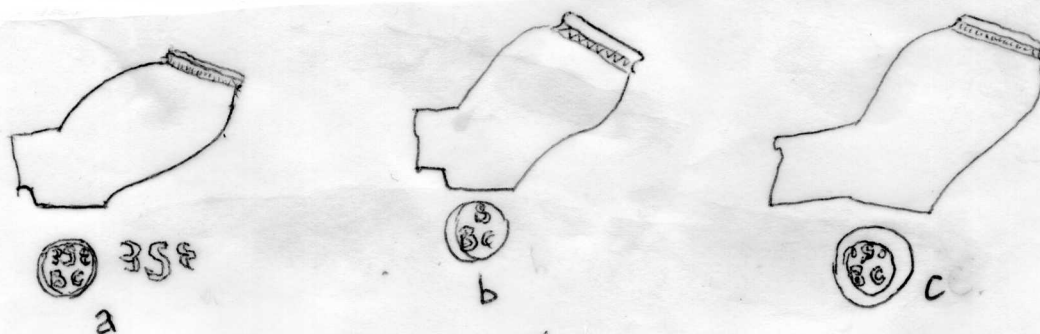


BS
(3)

1. Ipswich Museum.

Probably Benjamin Skeet. (1) 1671(b)-1740(ob) Ipswich 1696 Journeyman
London OA(J).





2

2. B^SC. relief. marks.

- ? Belier Sacheverell and wife, London 1634. Charter.
 a Oakham Castle.
 b. British Mus, B. Smith coll and Tullie House, Carlisle. London, Rippons cards, Exeter Mus.
 c. British Mus. Bankside, Mus Lond. Queenhithe Atkinson Coll. Polished
 d. Southwark Bridge, Cheminant Coll.
 e Oxford Excavations g Waterloo Dock Tatman Coll
 f Chester Mus.
 1620-45 date range.

3. B/S

Westgate St, Gloucester. c 1840.

4. B/S Salisbury and Winchester, Thin stems . x 1770-90.

5. Relief marks on side of junction stem and bowl. Dorset type.

a. Poole

b. Dorchester Mus.

c. Dorchester Prison Excavations

d. Wadham House, Dorchester.

Date range 1670-1700.

Also probably same mark St Mary's City
Maryland.

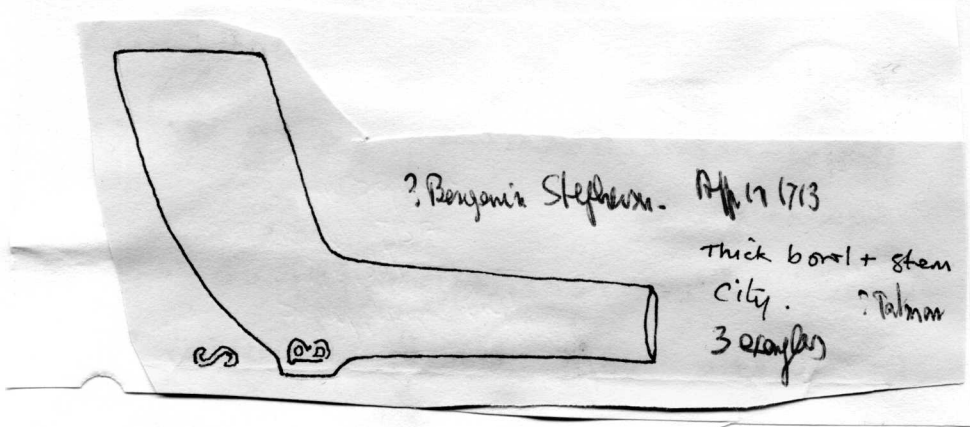
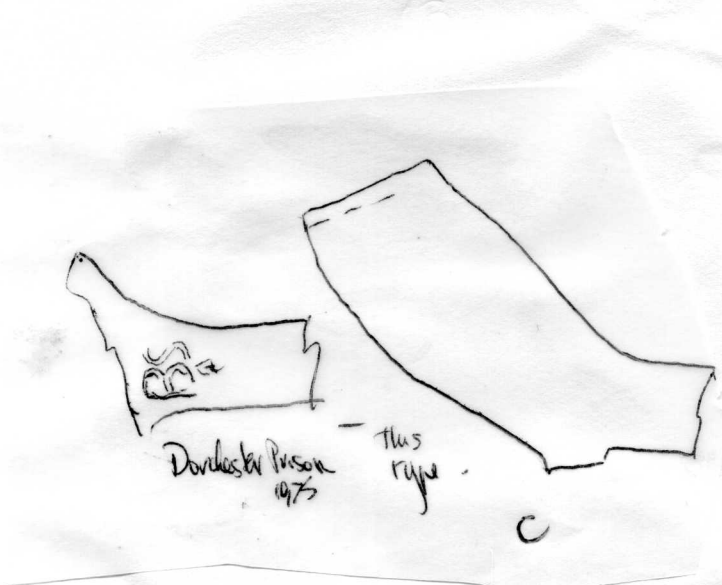
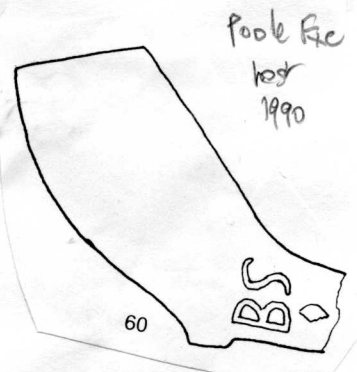
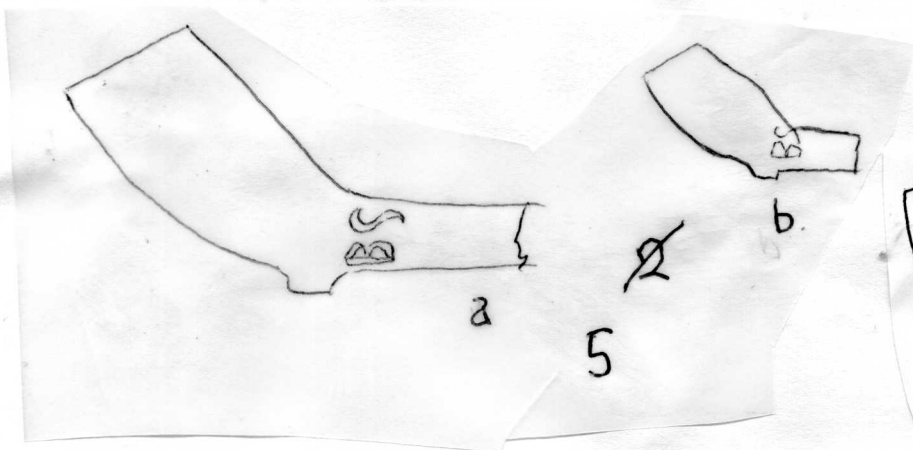
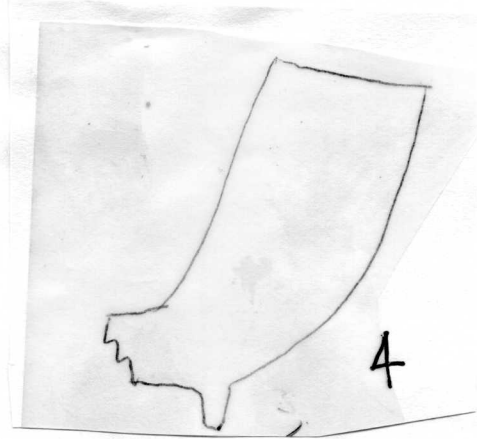
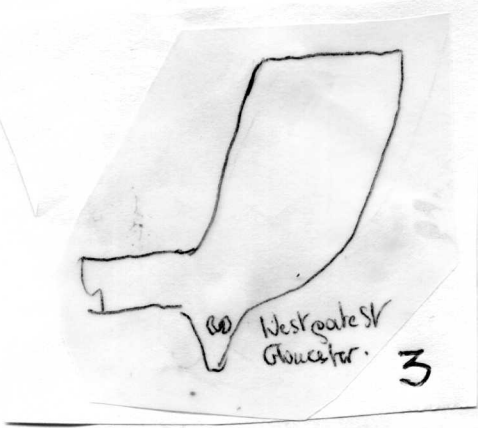
Also B/S on types 10 and 11 G. Thames, Green Coll, Mus Lond.

B/S. c1820. Bradford.

6. Possibly Benjamin Stephenson 1710-?1748(ob)

1710-12 Children bapt St Dunstons Stepney. 1717 child bapt by different
wife, Elizabeth St Swithin London Stone, 1713. Free 1748 bur St Botolph

Aldgate(Trade not stated)

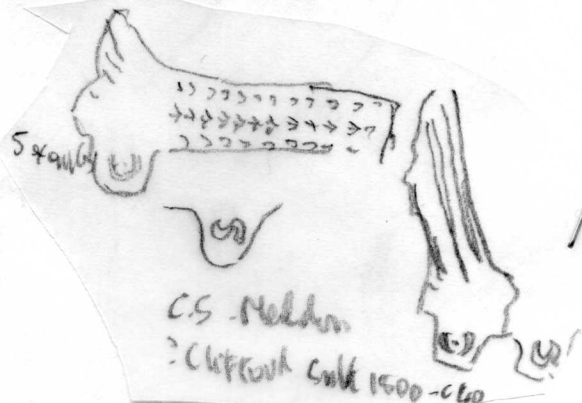


CS

1. Type 5By. Lichfield. (4) ¹⁵⁴⁰⁻⁶⁰
2. C. Singleton Wolverhampton c ¹⁶⁴⁰⁻⁸⁰ ~~1640~~-80.
Coventry and Birmingham Museums.
- 3 Queenhithe London, Cheminant Coll. Large incuse mark. ? Charles Smith
1652 Bristol Charter. Pipe c 1650-60.
4. Charles Steward. (1) Free London 1709 (Pipemaker by trade.
(2) 1714. Free London of St Martins Worcester.
From Eresby, Lincs. Incuse per P.K.Wells. Pipe date c 1720.
5. a Brentford Excavations.
b. Brentford, Wm Heaths Kiln.
Pipes date c 1760-70.
6. Charles Smith 1845-51. Peckham CS 30)
a. Incuse. Mus Lond.
b. From a fireplace built 1848 at 35 Park Hall Dulwich) per F.W.
M. chaelis 1950) Similar Woolwich Dockyard.
c. Billingsgate. Cheminant Coll
- 7 C. Swinyard c 1810-20. Guildford
Possibly aa ~~Charles~~ ~~Swinyard~~ but not certainly. Pipe too early
for Charles of Horsham. William Fl 1815-58 of Guildford most likely
see WS.
a. Pulborough (Atkinson Sussex Pl. 2.)
3 examples at Guildford. also Ewell, Godalming ()
C/S on a variety of spurs from B.A.R. VI
b Harley. c Oatlands. d Newdigate e. Reigate.
Also Type 7G. ~~12~~ C/S London, St Fagans Mus.
5G Mus Lond. Oxford Excavations base mark no bowl.

3(C)

- 7 C. Stewart Mould at Kirkcaldy c 1860
From Balgonie Castle B.A.R.X.
- 8 a. Lichfield. b Broseley (Atkinson Coll)
- 9 C. Singleton. Wolverhampton c 1840-80. Coventry & Birmingham Museums
- 10 London, Queenhithe Cheminant Coll. Bristol type Charles Smith 1652
Bristol Charter suggested.
- 11 Chas ^{Steward} from Eresby Lincs. ~~Relief~~ base mark incuse. Possibly
Charles Stewart pipemaker of St Martins Worcester Free of
London 1714. Pipe date c 120-40
- 12 Brentford area excavations c 1750-70, b from fill of Wm Heath's kiln
Brentford (B.A.R VI) Wasters. d ies large and small bowl thicknesses
(1) 1.7-2mm. (2) 2.5mm. Bores 5/64 (2) Polished bowl

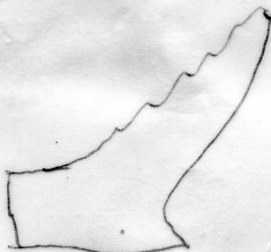




c

Balponie Cote

7



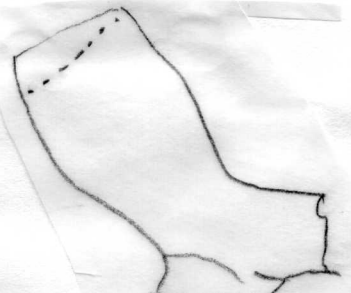
a

#

#



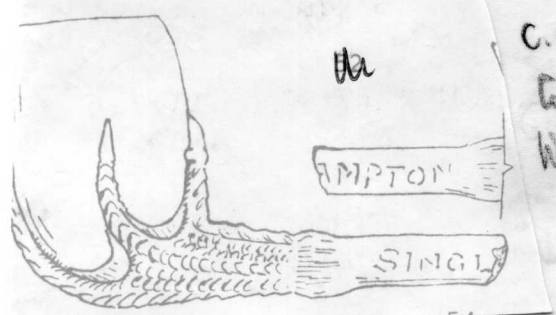
#



b



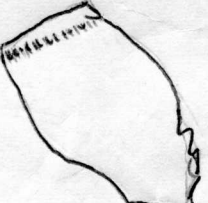
8



Ha

C. Singleton
Gentry (H)
W. W. W. W. W.

9



S

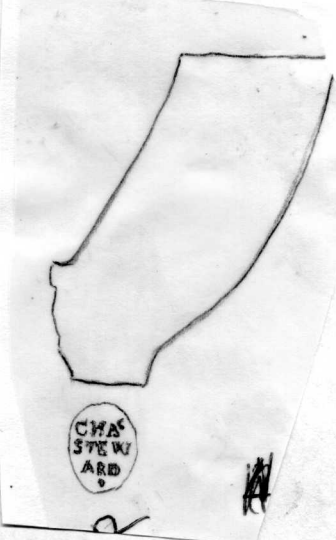


Queen's
look an early
Brit. type.
? Charles Smith
Dress.

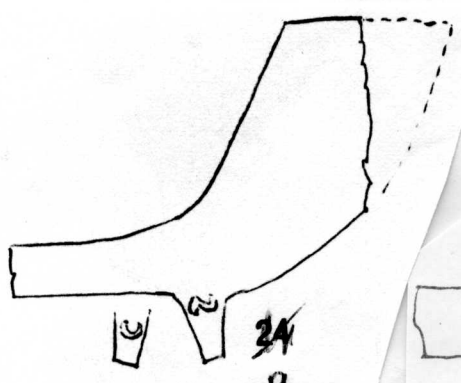
Can't call

#

10



11

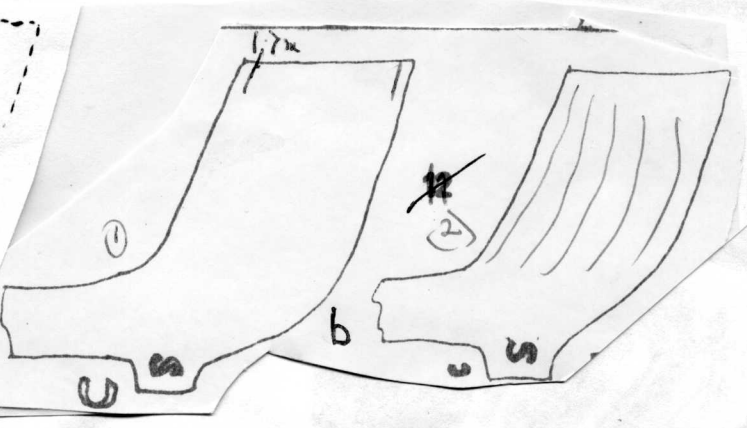


c

2

24

a



1

#

2

b

c

2

c

2

12

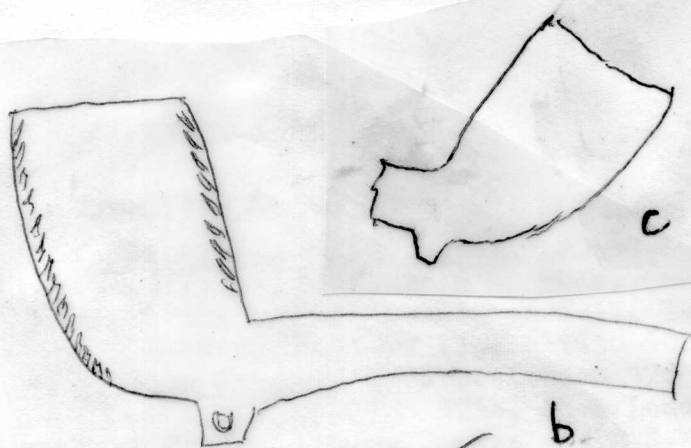
3(D)

Presumably Charles Smith 1845-57

(29. Billingsgate

Clement Coll.

C. SMITH
PECKHAM



PECKHAM.

SMITH

1

2

6

c

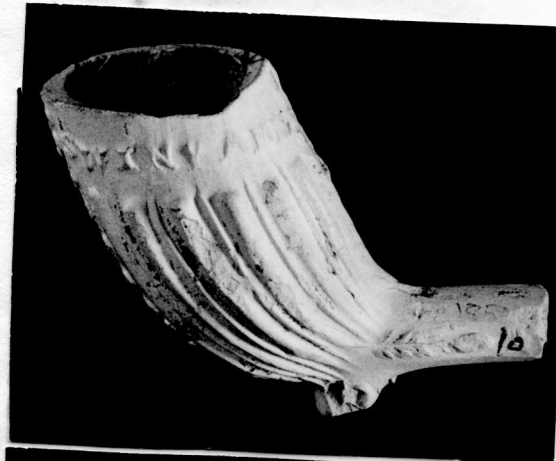
BARVI



Guloford



a



BARVI

Harley Survey

b

BARVI



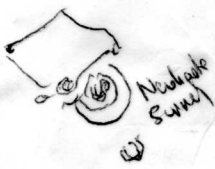
Dakbawls

c

7

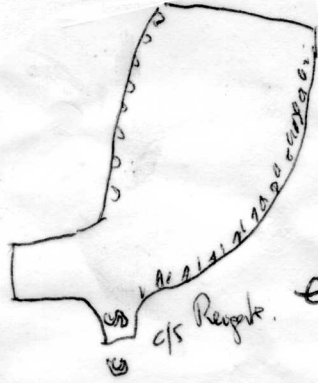


7a



Newbale Survey

d



1/5 Rengok

BARVI

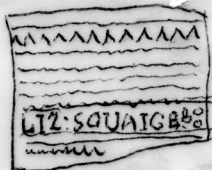


ES
(5)

1. Edward Sherry. 1792-1822(ob) Gainsborough.
 - a E.Halton, Skitter, Lincs per P.K.Wells.
 - b. Nottingham, Hammond Coll. Below G ?P 177An undocumented maker called Page worked in Gainsborough. v. B.A%R.VII
2. Elizabeth Squaige. or Sauige(?Savage)c 1720-50. ? Warrington
Stems from Warrington, St Elphins Rectory, Ordsall Hall, Salford.
Relief marks
3. Broseley Types
~~XXXXXXXXXXXXXXXXXXXX~~.a3By Robinson Coll, Tamworth, 2By British Mus and
Tamworth. *Robinson Coll (Broseley)*
 - b. Broseley, Thursfield Coll
 - c. " Coalbrookdale Mus.
4. Stem mark relief. Stroud. *also Gloucester, Gamborn Parvey Lodge (Glevie 22.1988)*
Elizabeth Santos recorded 1839 Worcester St, Gloucester,
Santos & Co 1842-44. Black Cloth Yd.
Mark looks 18th cent.
also Gloucester, Gamborn Parvey Lodge. (Glevie 22.1988)
5. London, ~~mus Lond. Hanoverian arms~~ plain E/S and crowned E/S. No leaves
mottoes or supporters c 1800-20
- 6 Mrs Elizabeth Spaul 1880-99 Tabard St, London.
 - a Chelsea, Rundle Coll. Kew Gardens
 - b. Poole Mus, Uxbridge/Slough Canal, Steyning, Otford Dump. *Poole a.c. p8 1990*
 - c Bermondsey Excavations.
- (5)A
7. Edwin Southorn Broseley 1841(aet 20)-1863. recorded dates. Stamps occur
on pipes tp1890+
 - a Bideford/Barnstaple
 - b. Chester.
 - c Otford Dump c 1890
 - d Coventry Mus. Robinson Coll, Broseley
 - e Chester.
 - f Greyfriars Stafford. also g.Also 2 examples with long twisted stems, Exeter Mus. Steyning, Walsall Moat.
and ES incuse on a pipe with HARE AND HOUNDS HOTEL stencilled in spirit
varnish on the back.
- (5)B
8. Perhaps Edward Stephens. W.Cowes 1710(m)
 - a Southampton Mus
 - b. Oyster St, Portsmouth(base Mark)
 - c " " Crowned E/S. all 1/2
 - d. Bordage Exc. St. Peter Port, Guernsey. 1976*E. Castle Cornet, Guernsey*
Date range 1680-1720. so perhaps an earlier Stephens.
9. Edward Sandeall c 1660-85.
 - a Shaftesbury, several. Maiden Bradley, the Priory 8/64 and Exeter Mus
 - b Church St 7/64.
 - c Charlie Newtons Garden Maiden Bradley, 6/64.
 - d. Hindon Wilts, base marks (2 examples:
10. Maiden Bradley, Exeter Mus. *image*
- 11 a. Fulham High St.(Elkins Coll) b. Pauls Wharf (Tatman Coll)
c. George St, Hemel Hempstead. Possibly Edmund Stiles 1657 Finsbury ob.
Also. Type 7G long bowl E/S New Fresh Wharf. c 1680
" 8G E/S Woolwich Dockyard
" 10G E/S Bankside and crowned Atkinson Coll and E/S Fenchurch St.
11G " "
ALSO E.SCHLENGEMANN/COMMERCIAL Rd. Hammond Coll c.1870.



Rainford

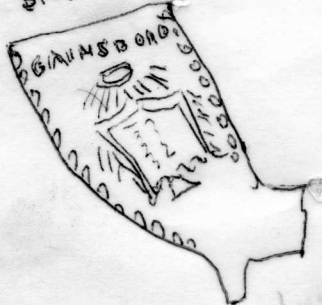


Warrington relief
St Elphinst Rectory
Ordsall Hall, Salford

2

SAMPLE 12 R 12 Y

CAINSBORD



a

Hamad Coll
SHERRY (ver)

214



See Page

b

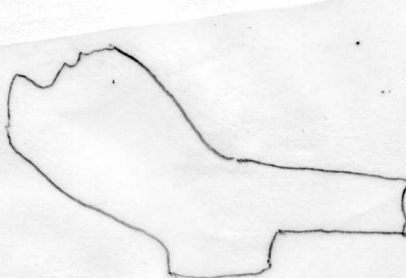
Nottigham Gl a GR

1

SANTOS
GLOST
FROM
BROS

Stem Mark
Strand

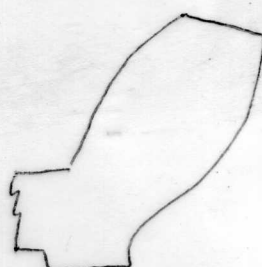
4



a

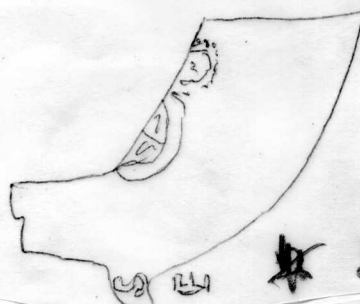


b



c

3



ES

5



6c

ERMONDSEY SISE

E. SPAULL

a

E. SPAULL

67 GRANGE WALK S.E

b

6

E. SOUTHORN
BROSELEY 29

app VIB
Rufus
Bawley

a



PATENT Chester

PATENT
Sullivan & Co
JRH&CO
-EY 3



1

b

Oxford Dump.

E. SOUTHORN
BROSELEY 21

c

53

E. SOUTHORN
BROSELEY 10

Cusbury Mus (M)

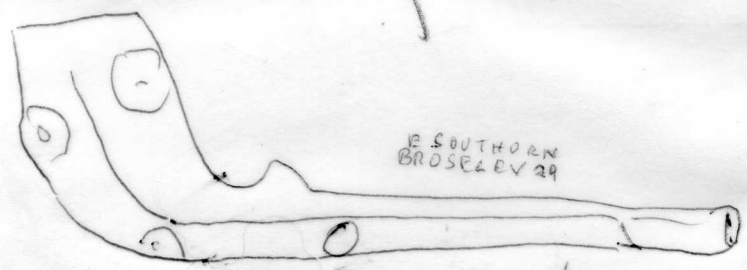
d



E. SOUTHORN
BROSELEY

Chester.

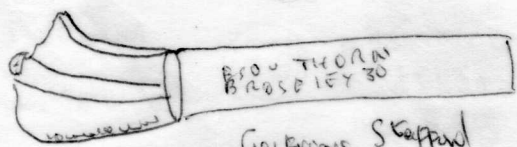
e



E. SOUTHORN
BROSELEY 29

f

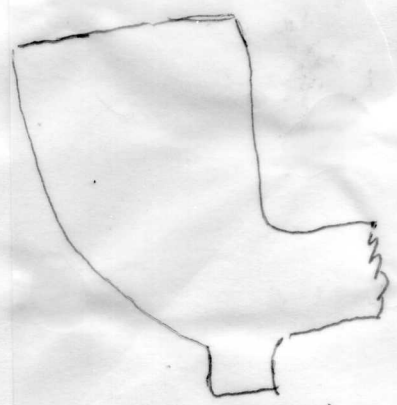
Grey Friars - Stafford



E. SOUTHORN
BROSELEY 30

g

Grey Friars Stafford



E. SOUTHORN
BROSELEY 9

E. SOUTHORN
PATENT

Mus for GII

FS

(6)

1. Broseley, Thursfield Coll and Shrewsbury Mus.

a. Type 1By

b " 5By

c " 3By Pool Rd Nantgwynn

ol. Broseley, Atkinson Coll

2. Isle of Bugs with several others. Relief. c 1650-70.

3. Incuse on base. Elkins Coll (a) (b) Moulsham St, Chelmsford

4. f. London, Rippons Cards, Exeter Museum

g. Binfield Album, Exeter Mus, perhaps the same pipe as f.

e. F/S. Port Royal Mayes Excavations Level 5. 1680-1740.

Date range 1680-1710 (?) looks c 1750

12. 1670-1700

h. Castle Cornet. No. Possibly Francis Saywell, London 1688, 96 (O.A.)

5. Francis Stray London 1732 F. suggested in which case F1 to c 1770.

a. F/S Church Alley cesspit, c 1730. London, Mus Lond.

b. Front lawn of Capel Monow. Enfield. c. 1740

Similar from London, British Mus and Bankside, Mus Lond.

Bedwell Priory, Bucks (Milton Keynes Journ. 3. 1974. Fig. 11)

(6)A c. F/S crowned all Williamsburg per L.T. Alexander.

d. 1 and 2. Port Royal, Mayes Exc. 1 Level 5. 1680-1740.

2. Level 4. 1700-40. Both crowned F/S

e. F/S Crowned. incised FS on back of bowl. Louisbourg cp marks from Venice (photo album) c 1760. c. 2 Wapping, Tatman Coll M/S on spur

f. Williamsburg. (A. Hume Post Med Arch). F/S crowned.

(6)B g. Elkins Coll, Queenhithe. F/S crowned apparently same mould as f. (ol. with sufficient)

6/64. Polished greyish-white.

(6)C.

Pipes of Francis Street, Northampton. 1826-50

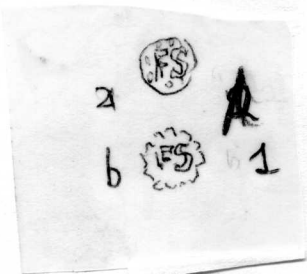
350-400 examples mainly from Northampton. Pit group of the 1840's
St Peters St with pipes of John Hurst London 1808-49.

Examples from Blisworth, Boughton Green, Brixworth, Bugbrooke, Chapel
Brampton, Duston, Earls Barton, Scaldwell, Towcester, Yardley Gobion,
Bletchley, Bradwell, Hanshope, Stoke Goldington, Stoney Stratford.

Also Jamestown, Structure 128. Icepit. 1625-75 and Refuse Pit 1.
1625-50

Bowl with leaves front and back F/S Woolwich Dockyard. maker
suggested Frazer Stone Liverpool Rd. 1823-39.

6

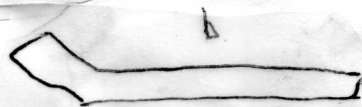


c d (FS)

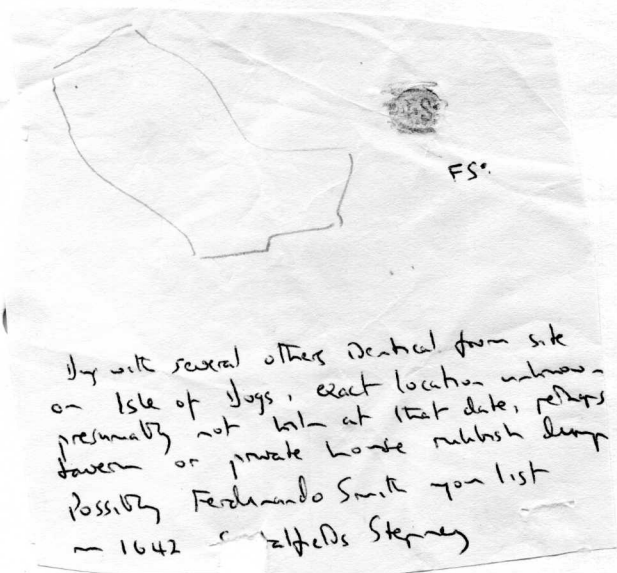
4

Elmsall Incause base 1
 (approx. 3mm)

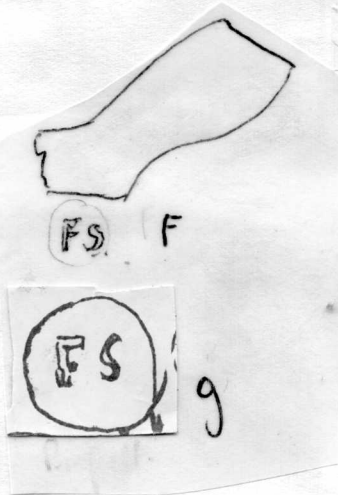
3



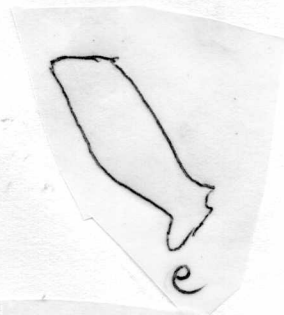
(FS) Manselwood
 Chelmsford
 ? Incause on above.
 Moulstone St.



FS.

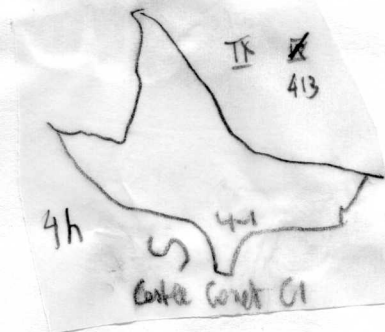


9



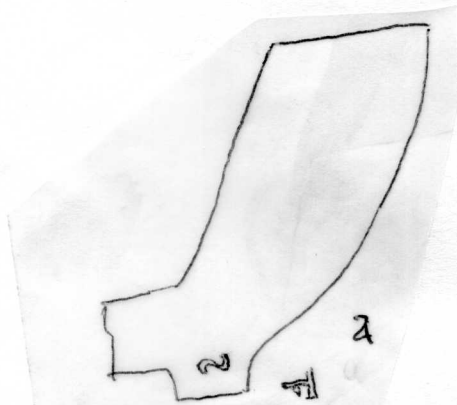
e

4



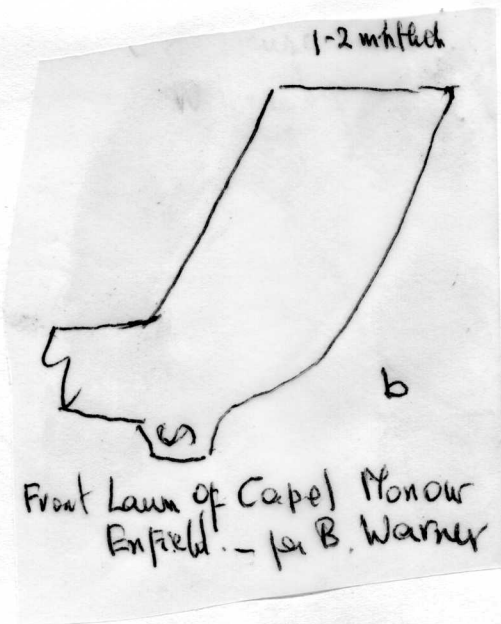
43

2



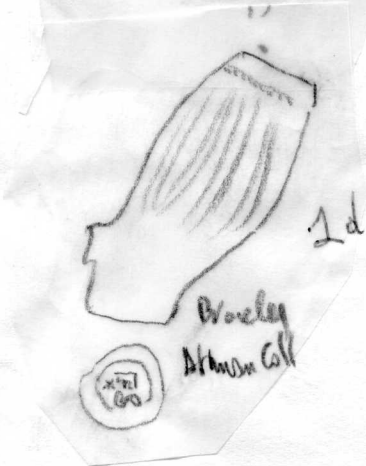
a

5



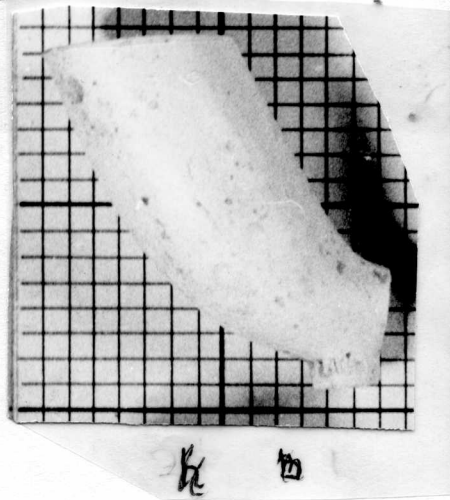
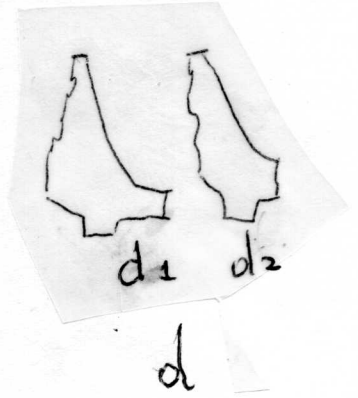
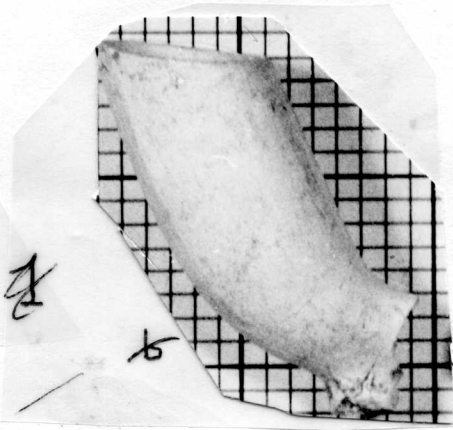
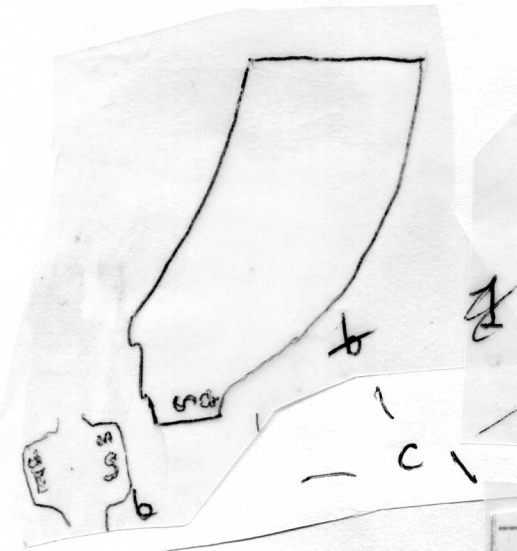
b

Front Lawn of Chapel Monour
 Enfield. - per B. Warner



1d

Worcester
 Almon Coll

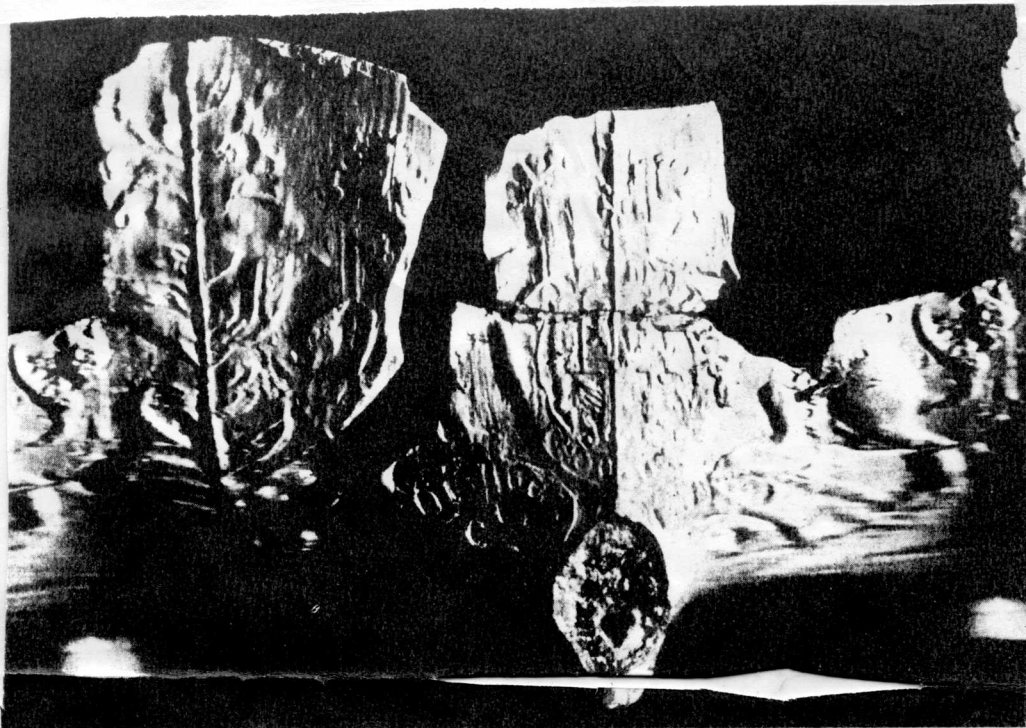


Wapping

10/4/89



22

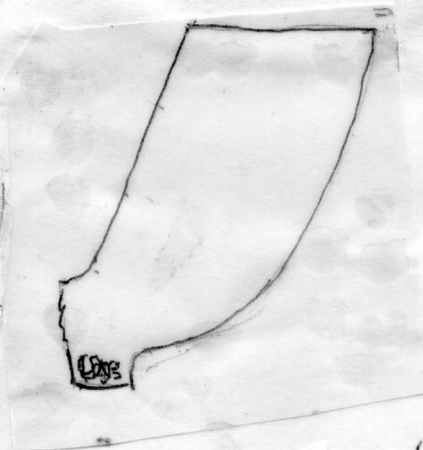
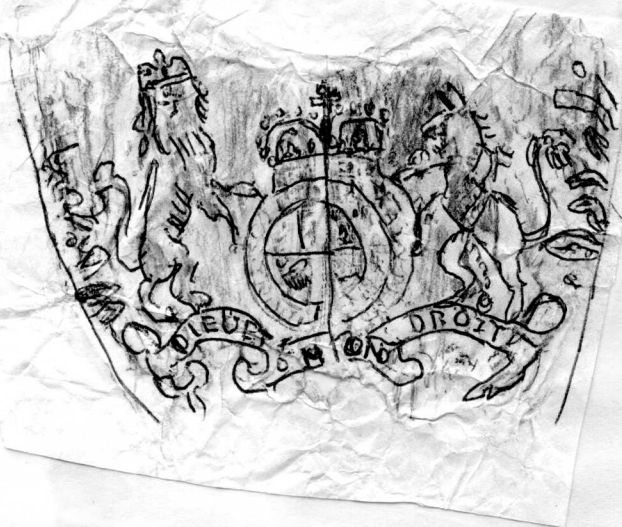


ENGLISH CLAY TOBACCO PIPES

A: Pipe with Hanoverian arms, motto DIEU ET MON DROT, leaf and flower front decoration, crowned F S astride heel.

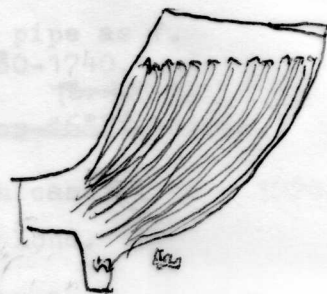
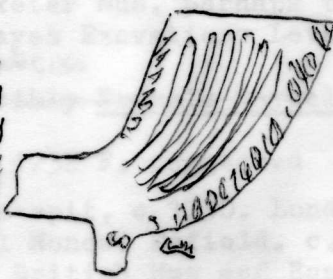
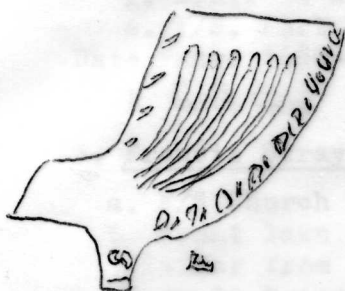
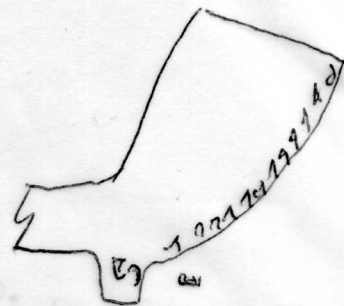
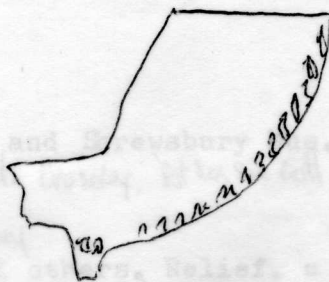
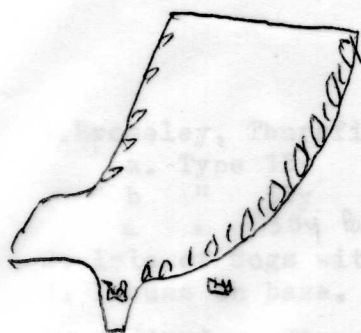
7
F

Elms Coll

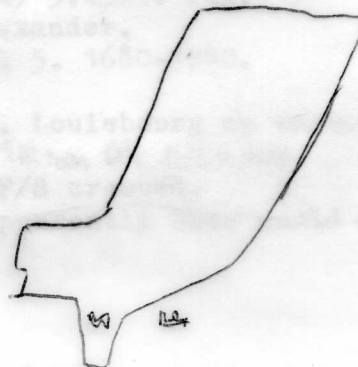
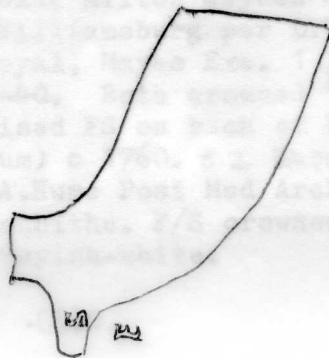
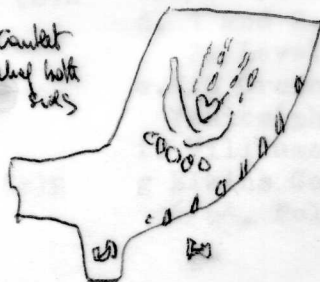


F/S. Grand Queenheltic

6
64
Polished high
white



Canlet
Pipes with
ends



Blisworth. Fens Barton. Hunslope.
Barnham Green. S. Goldington.
Brixton. Towcester.
Buckingham. Yardley. Gosham.
Chapel Broomfield. St. Stratford.
Dunham. Bradwell.

Examples 350-400 mostly from Northampton - Pit near q 1240s, St Peter's St
associated with pipes of Hurst, Cow Cross, Lunden. Radius of distribution
up to 18 miles.

Also Jamestown, Structure 125. Incept. 1625-75 and Refuge Pit 1.
1625-50

6

Bowl with leaves front and back F/S Woolwich Dockyard, maker
suggested Frazer Stone Liverpool Rd. 1823-39.

(7)

GS

1

George Smith. Broseley, Probably 1661-1712.

A(a) British Mus. Coalbrookdale.

B(b) Thursfield Coll, British Mus. Sibden Castle(rubbing)

C(c). Newcastle under Lyme. Hales Roman Villa. Sibden Castle on
Type 5By. (rubbing)

D(c) Sibden Castle.

(d) Sibden Castle, Type 5,(rubbing)

(e) Sibden Castle, Type 2.(rubbing). Shrewsbury Mus. British Mus.

(f) *Corvally Mus.*

2. Stem(over 2;1)

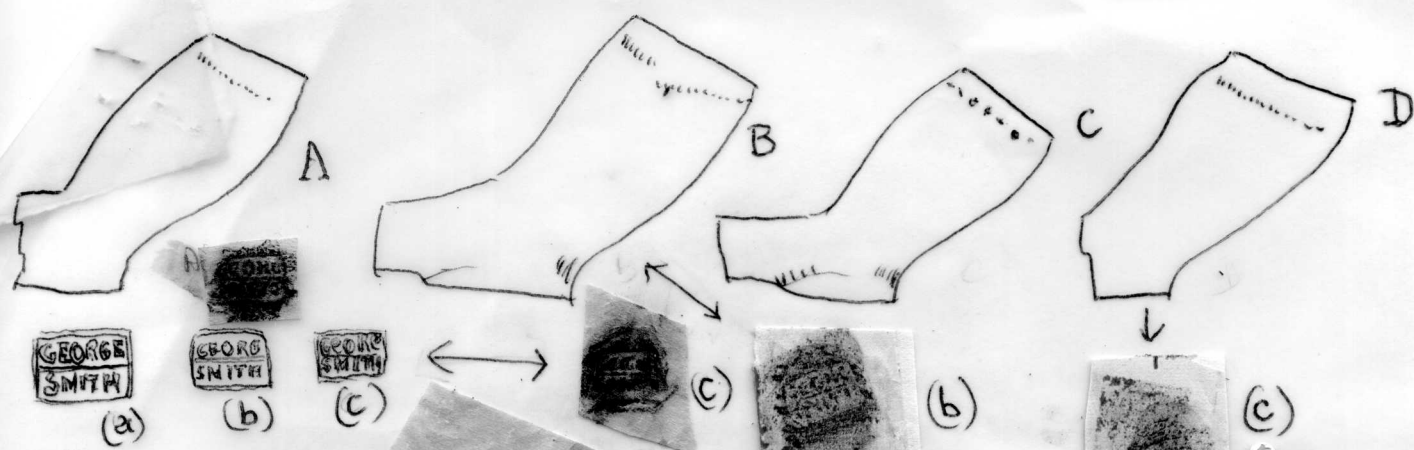
From Bridge Pier, Derby before 1789. Probably George Salisbury
married 1759. cp Nottingham stems.

3. George Sheppard 1892-99

a. Dover Exc.

b. London, Atkinson Coll

c *Lambeth Bridge. Chelmsford Coll*

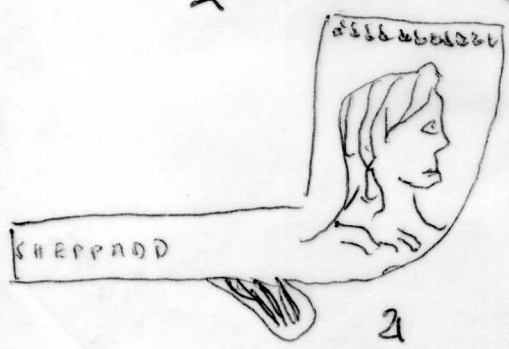
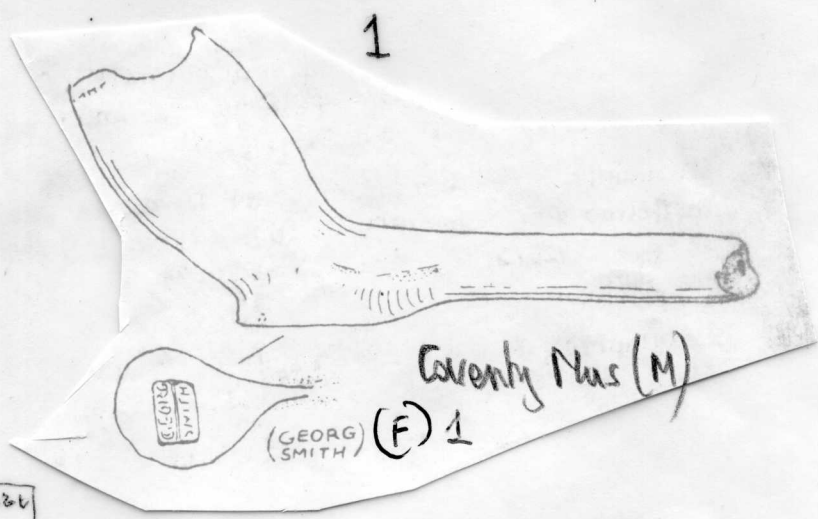


Hand Pool ball Markings

Also Pool ball Markings



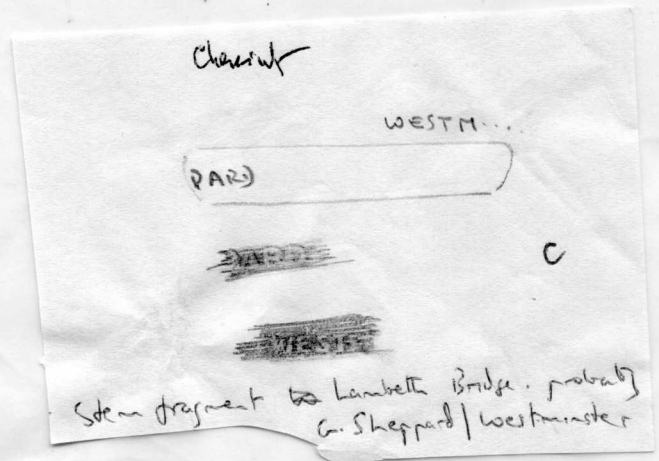
2



3

WESTMINS
HEPPARD

b.



Charles E. Egan
(Handwritten)

(7a)

(8)

4. Type 14G.

Bermondsey St, Cuming Mus. c 1830-60.

5. Type 10G.

Q Crowned G/S. London, Atkinson Coll

Uncrowned G/S

Fenchurch St. 1968 - Type as photo b. below

Type 10G. Moorfields, British Mus.

11G. St Fagans Mus from London, (photo b)
Marshalsea Exc.

12G. London Mus.

13G. Southwark, Garner Coll, G.H.M. c1780-1820

and Type 8G. Thames, Green Coll, G.H.M.

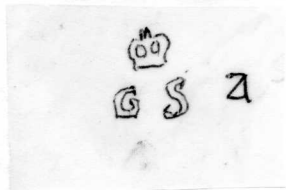
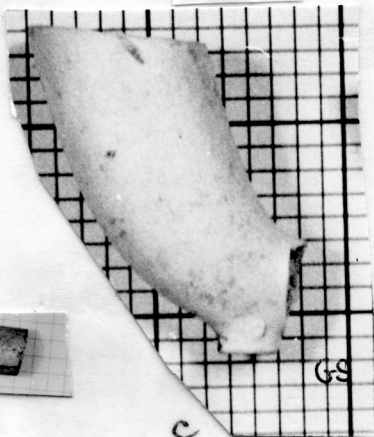
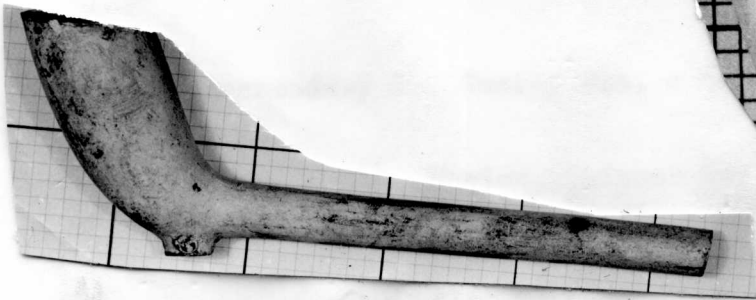
dee. Excavations - Brontford area

6. Type 7S.

a Newbury Wharf.

b. St Fagans Mus probably from London, Type 5G c.1650.

(7a)



5

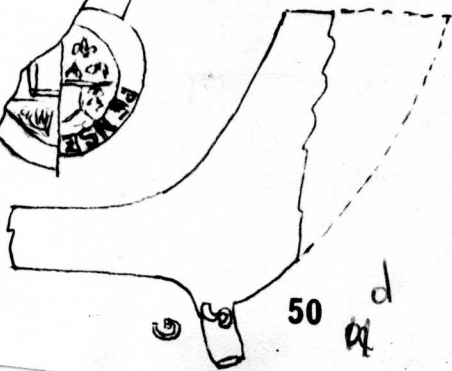
b

c

Willink

4

4



50

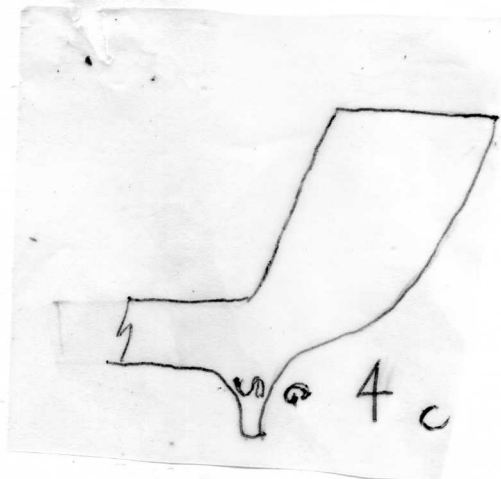
d



51

e

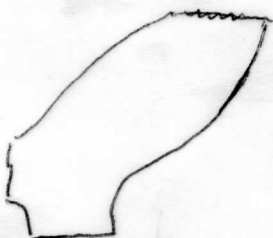
Brantford Exc.



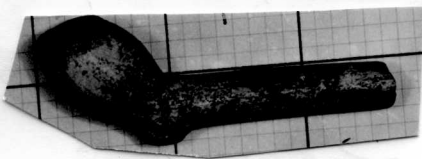
4

c

5



a



6

b

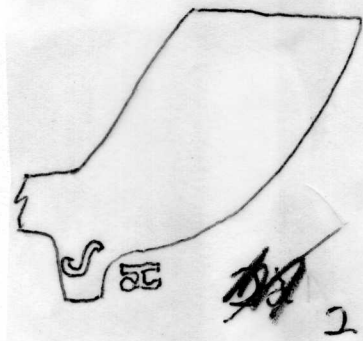
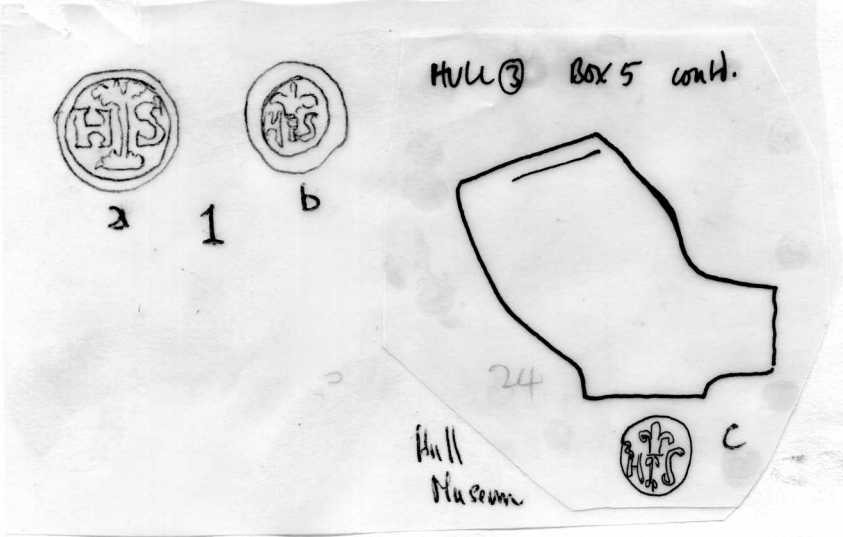
HS

(8)

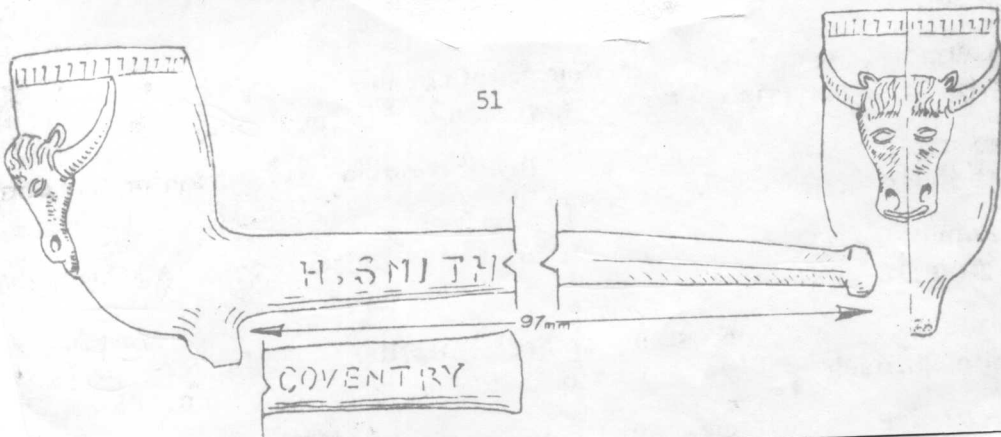
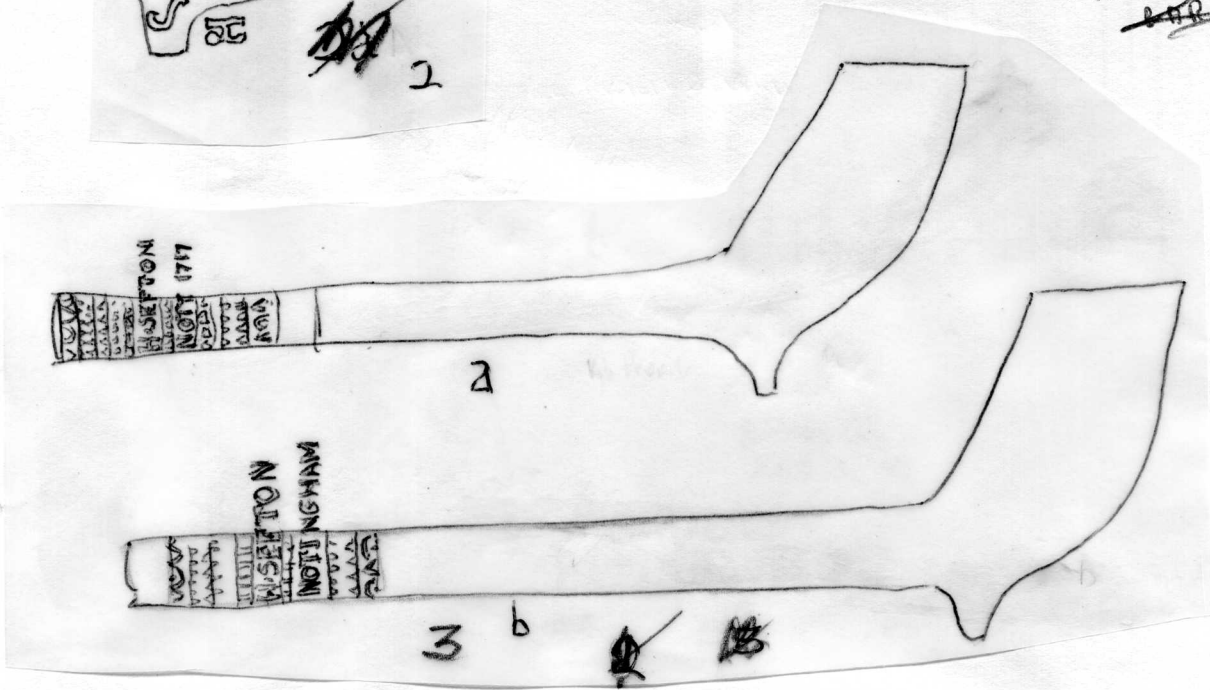
1. Henry Stanley Beverley 1662-9. Free of Hull.
 - a. Sheppard No 22. Binfield Coll, Exeter
 - b. " 9
 - c. Hull Museum.
2. Denny Abbet Excavations Cambs. 1780-1820
3. Henry Sefton Nottingham
Dated pipe as a. 4 in the Castle Museum
 1. High Pavement Excavations.
 - b. per R.C. Alvey.
4. Henry Smith Coventry 1871-1905
Coventry Mus.

(8)A.

5. British Mus, Bragge Coll. Perhaps Dutch c 1640.
Another HS on base. Mus Lond.
- 5 Brs Norton Pinner, Duncorm BARI X
6. a. Wood St c. 1740-50. Mus Lond. Williamsburg, Rosewall and Tutters
Neck, Virginia. Woolwich Dockyard.
b Wood St (above) Lengths 15% and 13½ inches. Dover excavations 1969.
c. Oatlands, Surrey, B.A.R.VI.
Date range 1720-50. Possible makes Henry Skinner. Free London
1703, Henry Stennard. bapt child Southwark 1725.
Also Type 10/11. Bankside and Wood St, Mus Lond.
" 11. Gunnersbury Pk Mus, Walthamstow Mus. 2-12 Gresham St, Mus Lond
And perhaps type 10, Ashmolean, Chiswick Eyott.
Type 13G. H/S leaves front and back c 1820+ Chichester,
and H/Spaul/London on stem Lamb and Flag and Lion on Bowl,
Atkinson Coll.
7. H. Stubbs. 23 Princes Rd. Plumstead 1910 and perhaps from c 1880.
NACPU round rim. see B.A.R.VI 150- Cheminant Coll.
8. a Bristol, British Mus, British Mus, Pritchard Coll 108. Caerleon
b. Reading. c 1650-70.
9. Henry Strutt 1839-88 Romford. Romford 1839 Stepney 1854. D.
AB
Products of the Southorns, Broseley c. 1950. Barbican Park. Tatman Coll
a. Robinson Coll
b. Oswald Coll



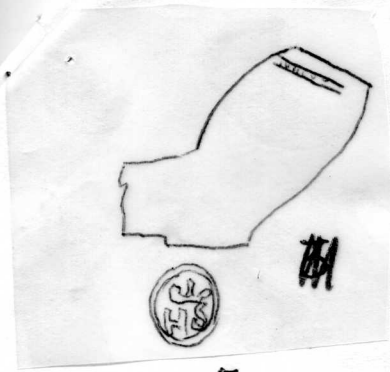
~~Not a coll~~
~~8.12.14~~ .56.



Coventry (H)

4

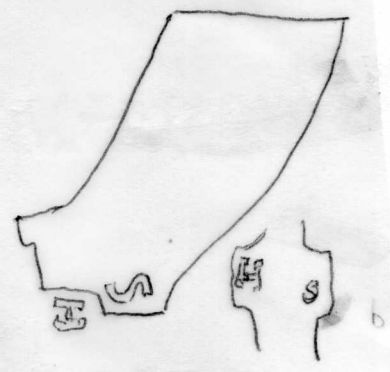
(8)A



5

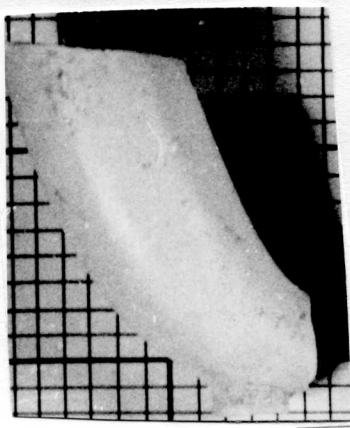
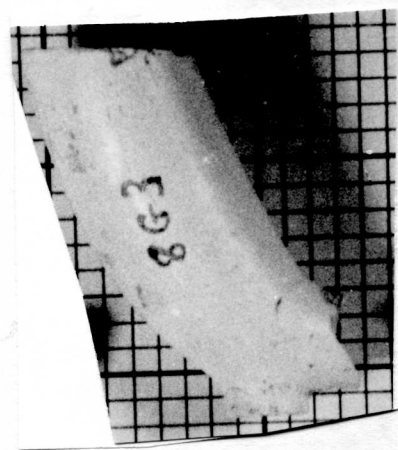


a



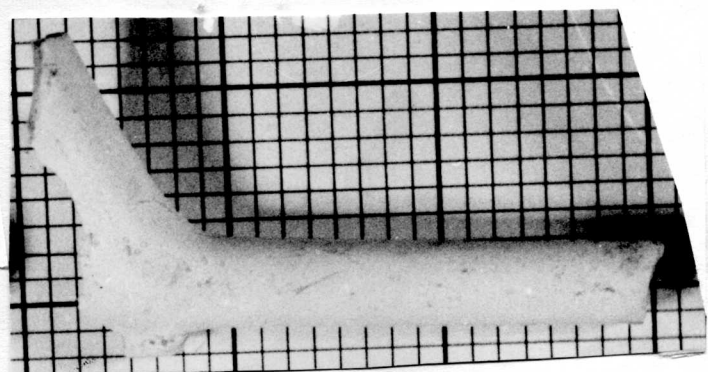
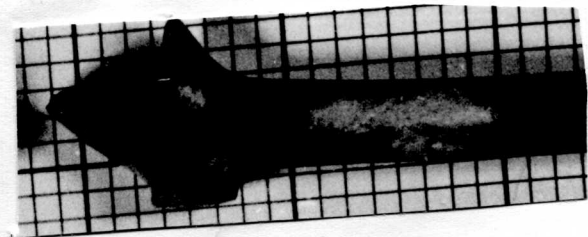
b

\$6



a

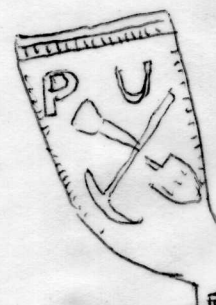
6



b



6 c

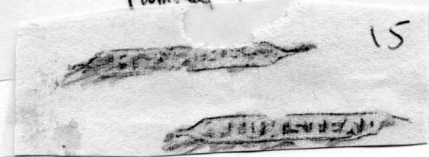


clenchant
B.A.R. VI
B.A.R. VI - 100

23 Princes Rd
Plumstead 1910

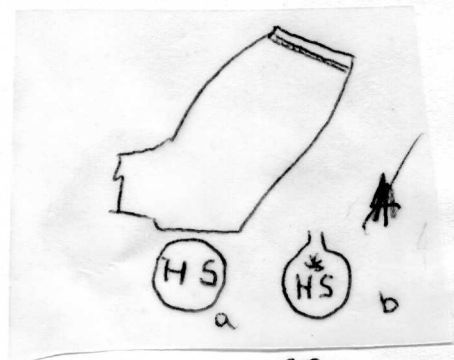
H. STUBBS

PLUMSTEAD

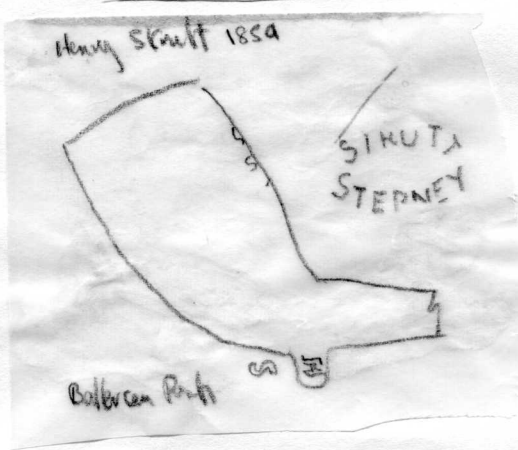


15

7



8



Henry Skuff 1854

SIRUTA
STEPNEY

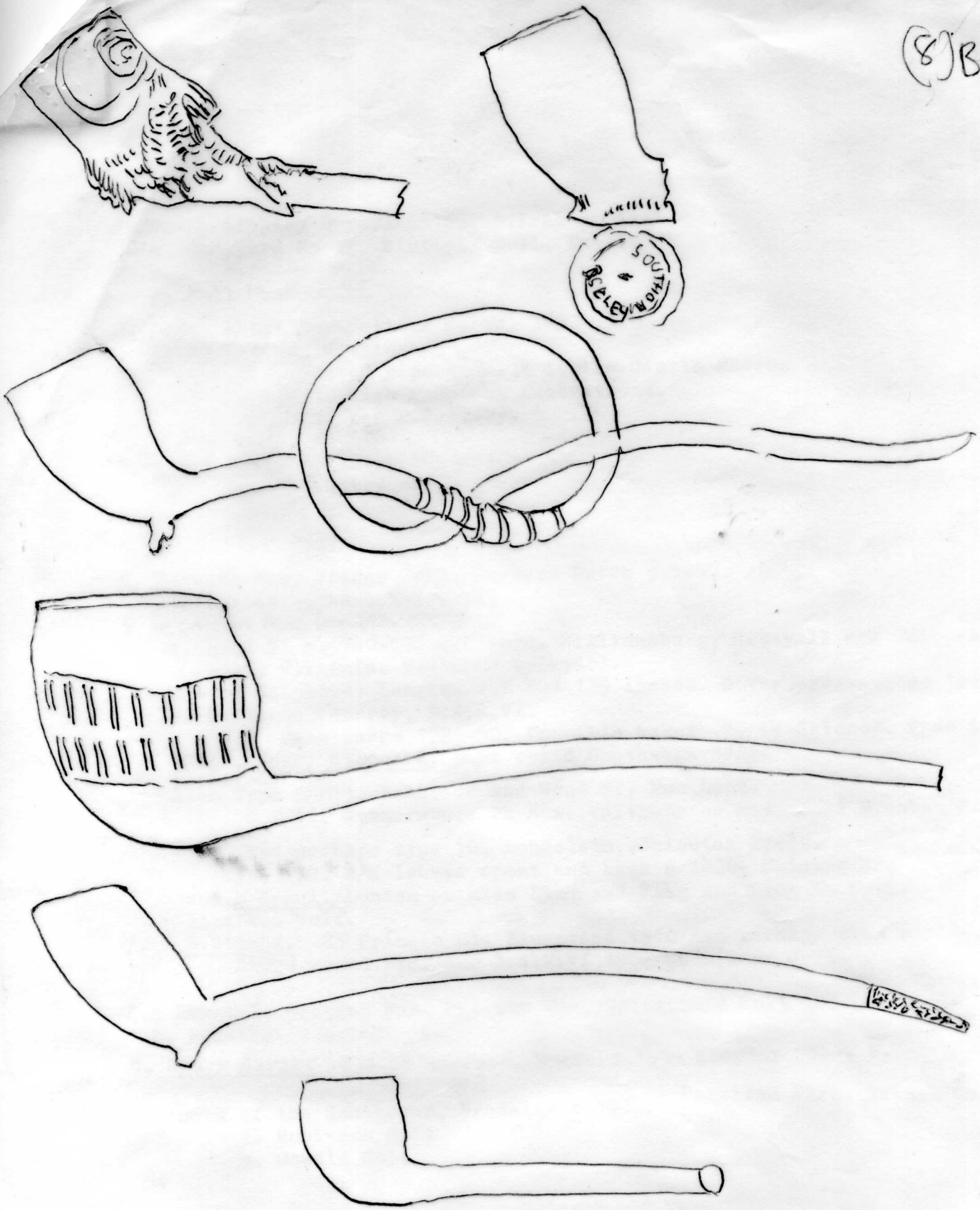
Collieran Park

5
Bis



NAC
Princes Rd
B.A.R. VI

(8) B ~~7~~



Southon's Products c. 1950
Robinson Coll.

9a

IS (A-C)

(9)

1. a. Parsons type 6. c 1780-1820. Durham area and Kendal.
b and c. Hartlepool Excavations 2.1. Probably incuse.
2. a. Blubberhouse Moor, Br Bradford.
b. Rotherham Mus.
c. York Excavations
d. York (T.P. Cooper in the Reliquary)
For comment see Simon Lawrence B.A.R.I p 77.
3. J. Sharratt. 1834-38(D). Doncaster. a and b. Doncaster Mus. B.A.R.I p.18.
4. James Storr Gainsborough. 1826-52.
a Lincoln Excavations
b. Boston, Lincoln Mus. Accession of William IV. 1830.
- 4Bis. John Smith 1667-before 1707(ob) Edinburgh Castle.
5. Joseph Scott (1706(F) (9)A.
to 1839. Hull 5 Bis Stonehouse/ Beverley, c 1820-40. (Cheminant Coll
and Joseph Henderson Scott Hull 1839-61.

All Scotts Kiln Dump. v B.A.R.I. pp 98-100 Figs 25-37.

(9)B.

6. John Lyne Simnett. 1789(b)-1868(ob) and Thomas 1819-44. Newark.
 - a. Newark Mus.
 - b. Newark Exc. Slave kneeling to Liberty
 - c. Bourne, Lincs.
 - d. Bowling Green House, Newark and Bourne, Lincs.
 - e. Newark Exc. 1975. h Probably Simnett in Wm Edmunds Kiln waste.
 - f. Newark Exc.
 - g. Nottingham Hammond Coll
7. James Sefton. 1752-74. Nottingham
 - a. Nottingham
 - b. Nottingham Town Wall, Park Row Exc 1967 About 2:1 per R.C. Alvey.
 - c. Fishergate Exc, Nottingham

8. Probably John Sefton (1) (9)C

168/9 Rainford. From Rainford.

9. John Sefton (2) Rainford 1739(ob)

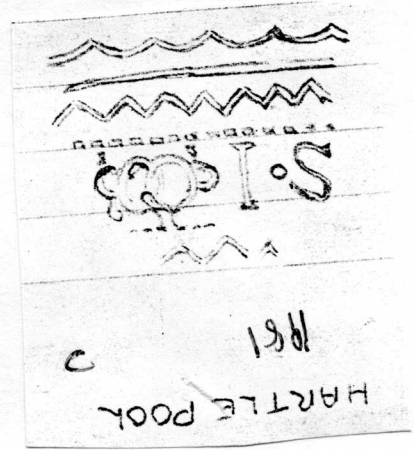
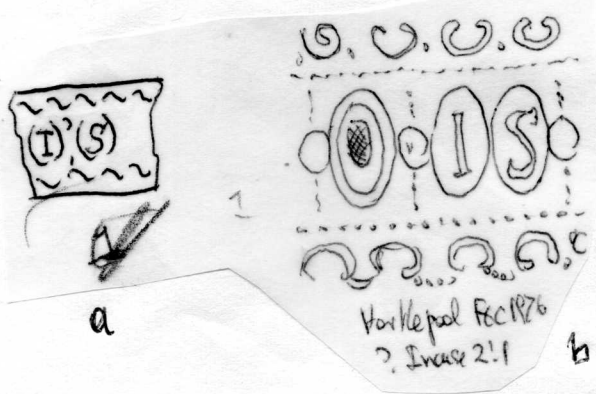
Primrose Hill, Rainford. v. B.A.R. VII

10. a, b, c. Bromsgrove, d Chester. v 1670-90. e & f Broseley (Atkinson Coll)

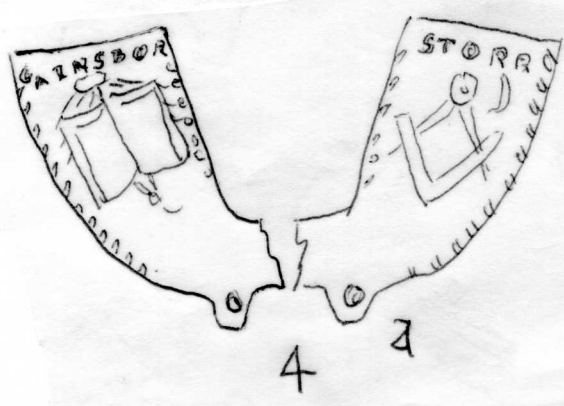
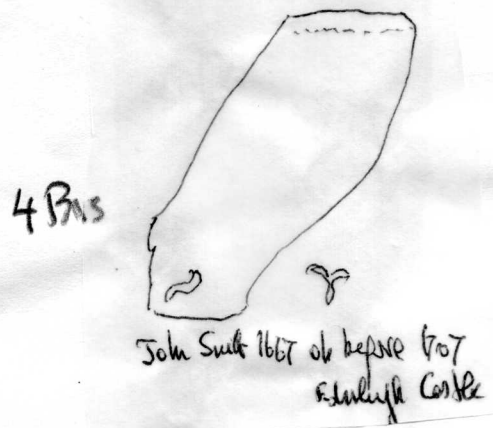
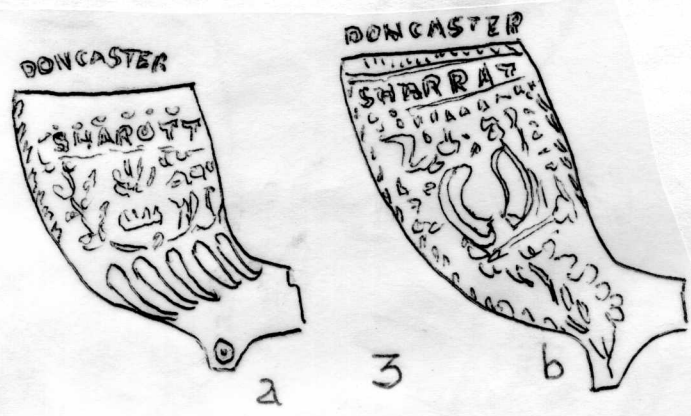
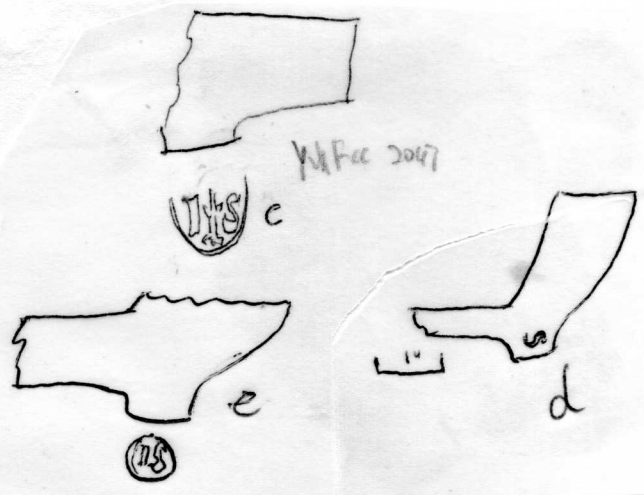
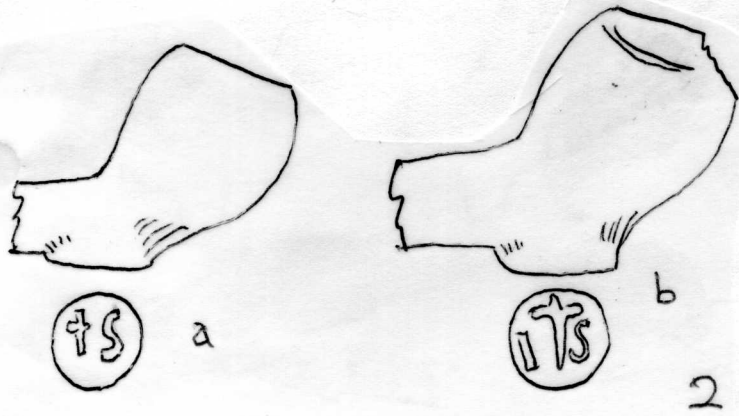
11. a. Southwark Bridge, b Pauls Pier Wharf. both Cheminant Coll.

Type 3.M. c 1680-1710.

10 Bis. ?John Smith 1845 Broseley. Relief Atkinson Coll



1




South bank of R. Humber.

HULL 4 cont.

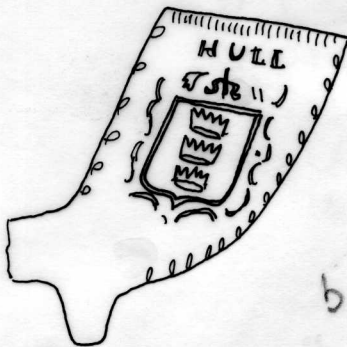
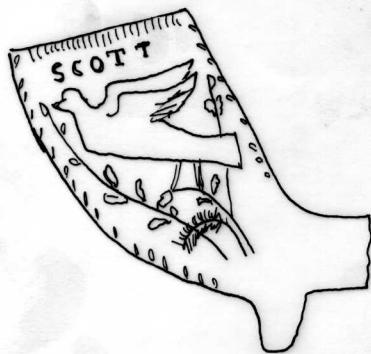
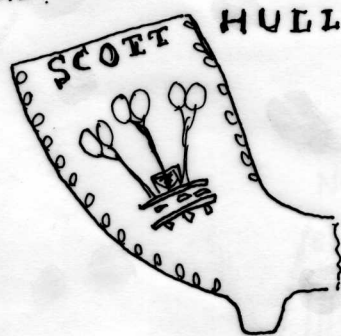
9 ~~8~~ A

592.



rev: Britannia sitting on 
with bow (rhand) and
olive branch (l. hand).

a



b.

STONEHOUSE

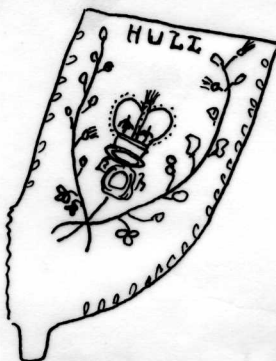
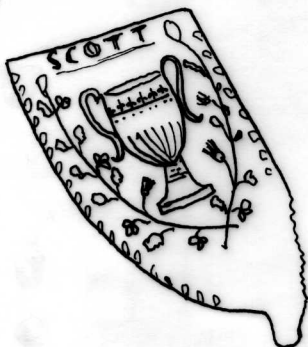


c 1620

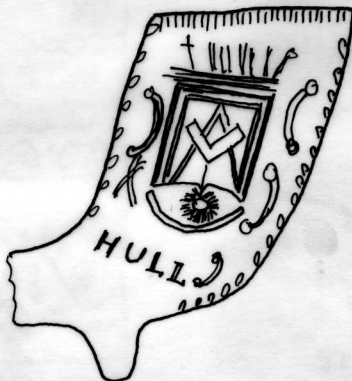
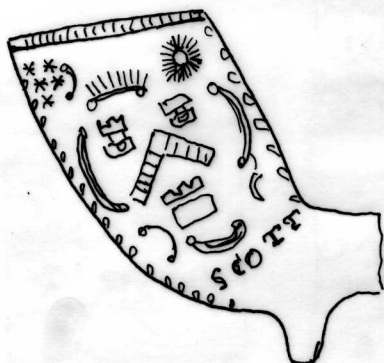
Hull 4 cont

584-5

3



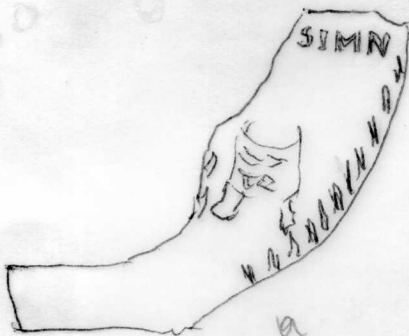
586.



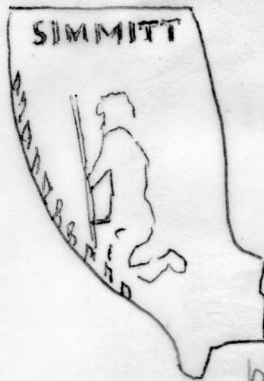
5 Bis

All Hull Facade

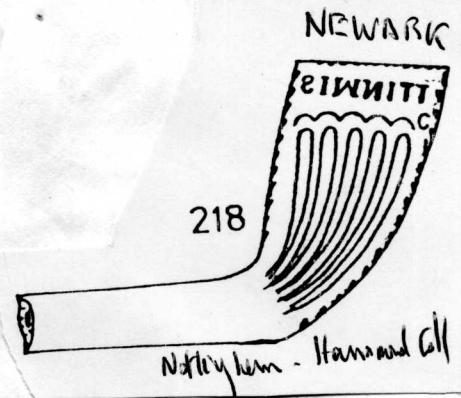
Mark Mark left side



a



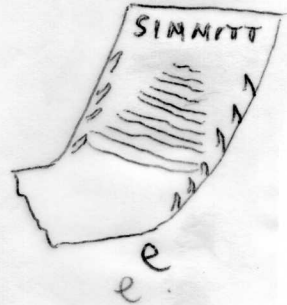
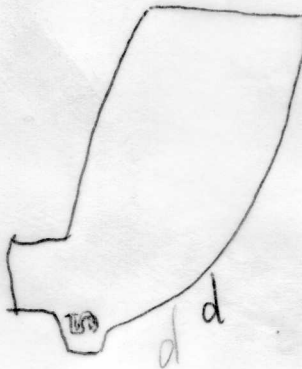
b



g

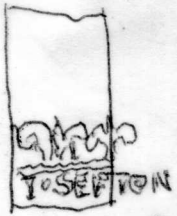


c



e

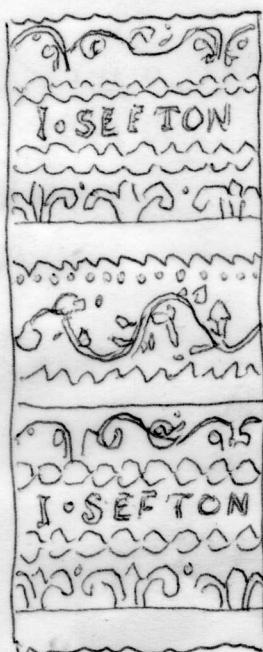
6



c

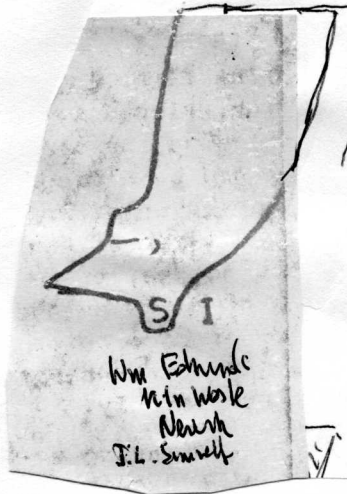


a



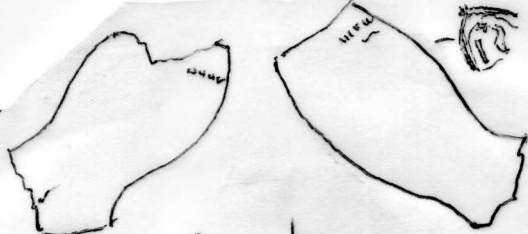
b

6 7



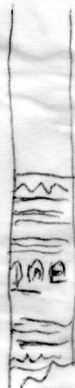
6h

(9)C

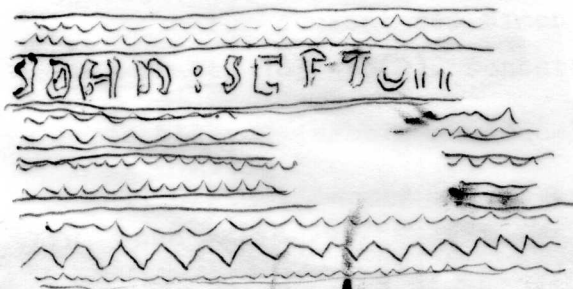
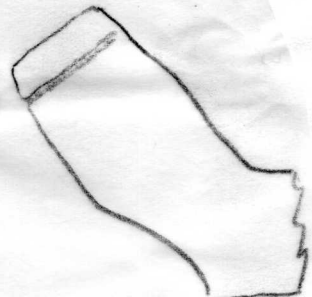


Rainford
Lanes
John Sefton 1689.

8



2125577C
JANE SEFTON (?) ob 1720
North Village
BAR. IX.



Pruned H. 11. B. A. R. V. T.
Rainford. S. 60.

9



John Sefton ob 1739.
Rainford

2:1



10e

10 F.

Arthur Cole Busby

Cheston for Mrs Puller

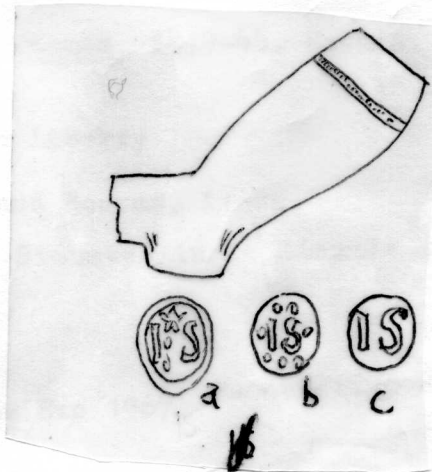


8c



? John Simcoe
elbow Cheston.

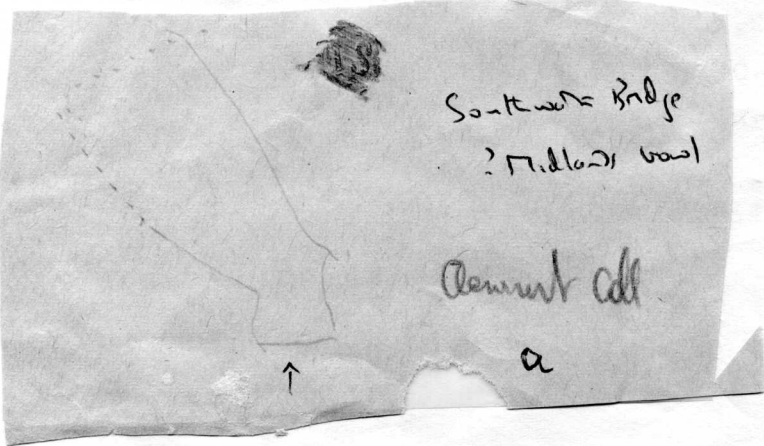
d



125577C
BROSELYN
Rel. - Arthur Cole
? John Smith 1898

10 Bis

10



Southwell Bridge
? Midland wool

Alumford coll

a

↑



x

b

Pauls Pier - looks N. Home Co

IS
(9)D (D-F)

12. E.Anglian Type of ~~ix~~* 9/10G. Perhaps John Salmon(2) Ipswich 1720-61.

a Castle Museum Norwich, 13 examples

b. St Stephens Ipswich.

13 Possibly John Salmon(1) 1689-1721. Ipswich

a, heartshaped and round bases associated with Dutch slipware bearing a date 1671 or 1691. Castle Museum, Norwich

b heart shaped base Bridewell Mus, Norwich

14 I.W.Saul Cambridge 1830(D)

a. Stem . Rose and Crown Histon mark probably incuse

b. ?Bowl base mark "

c. Rose and crown Histon

15 a and b. George and Dragon Cambridge a c 1840-60.
c. Saffron Walden, highly polished

(9)E.

16 All Chesterfield excavations. c 1670-90. b also Thursfield Coll, Broseley

17 Broseley Type 2.

a Worcester

b. Wall(Staffs) and West Welpington.

c Bromsgrove type 3BY

d Ibsley Old forge, Redditch

e Tamworth excavations type not given.

f Thursfield Coll, Broseley

g Type 5. By, Cheminant coll ex Gant coll.

h. Broseley, Robinson Coll and Thursfield coll.

K Iron bridge

Date range 1660-1700.

Also on Broseley Type 8.

relief

I.SMITH/BROSELEY along stem divided by bar recorded
maker 1845. Atkinson Coll.

J Joseph Southern 1841 Probably 8b J SOUTHORN/BROSELEY incuse
along stem

(9)F

18 Bedford excavations. Possibly T/S Thomas Simpson 1724 Bedford took app
1729(ob) Working c 1700-30 but pipe looks c 1690.

19 Stoney Stratford.

20 J/S Northampton, Horseshoe St 44 examples as indicated. c 1830-60.

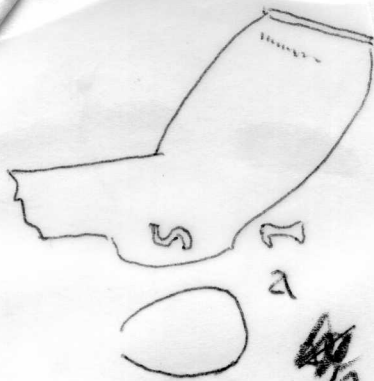
21 Jo/S Chalford and Westgate St Gloucester c 1840-60.

22. John Stock. Pipe Willaston, Cheshire. c 1670-90

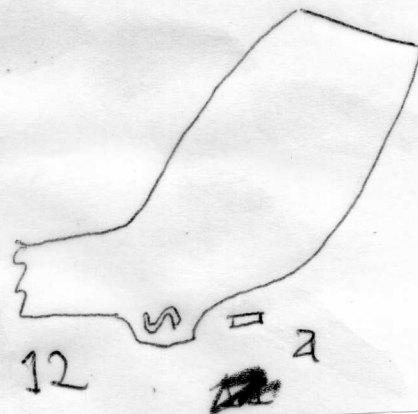
23 John Stockdale. Kings Lynn. Free 1820-21. F.Rolls.

24 John Blenkin Smith. 1885. Manchester. Reg No. Hammond B.A.R, IX

9D



13
b



12



a

TS
IS

b



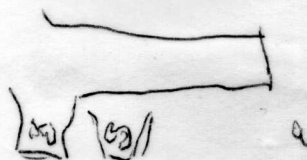
c

14

14



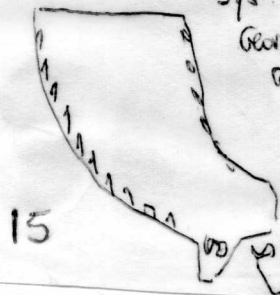
12



a

s/s

George & Draper
Cambridge



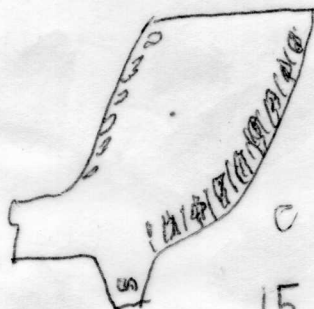
b

15



12

b.

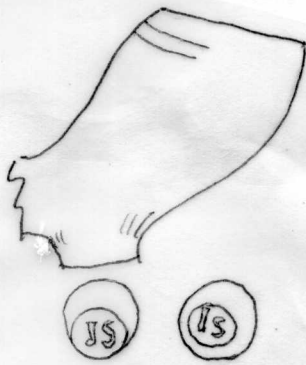


15



a

13

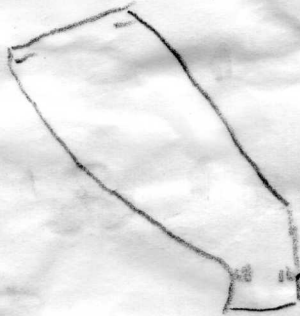


b

c

13. Oakfield Ave.

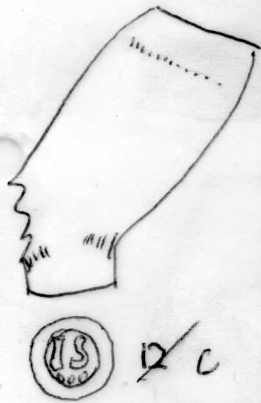
15



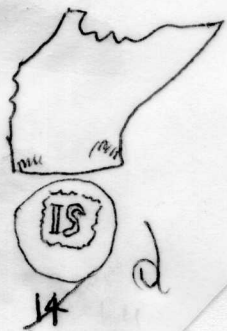
(9) E



Taknon Coll. BARIX 22

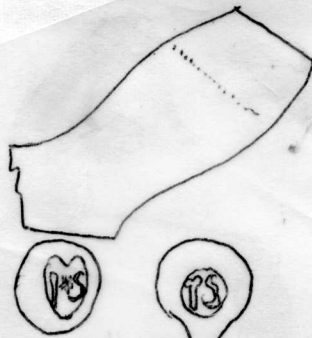


12 c



14

d



a

16

b



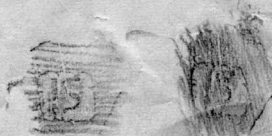
2



18

F

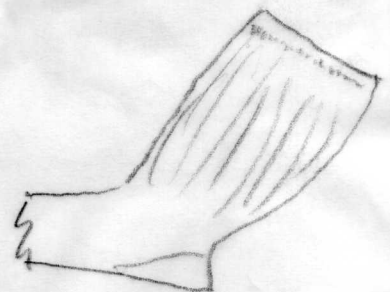
Broseley C.S. stem broken but cut down for re-use (Gant)



1 IS

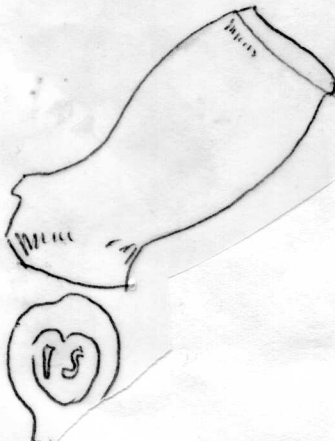
New Clonm

9



Iron Bluff

K



h

16

J. SOUTHAM
BROSELEY
more along clon
after can call

J

S/I > TS

1065

1006



Belford House

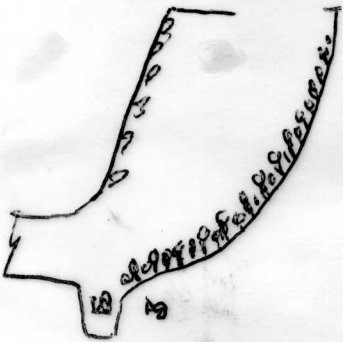
18

17

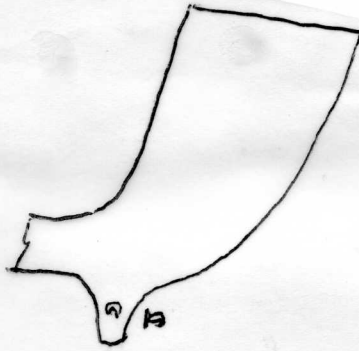


7

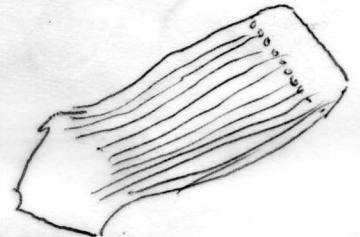
19



18 Horseshoe St. Northampton
 46. rangers, Blisworth, Brixworth Green
 Duston, Northampton



36. 20m/s.
 Blisworth, Brixworth Green, Brixworth. Angel
 Brampton, Copthorne, Cuckworth, Duston
 Earls Barton, Fotheringhay, Northampton.
 Sea Island, Towcester, Wellingborough, N. Bucks.



W. Heston
 Northwick

22

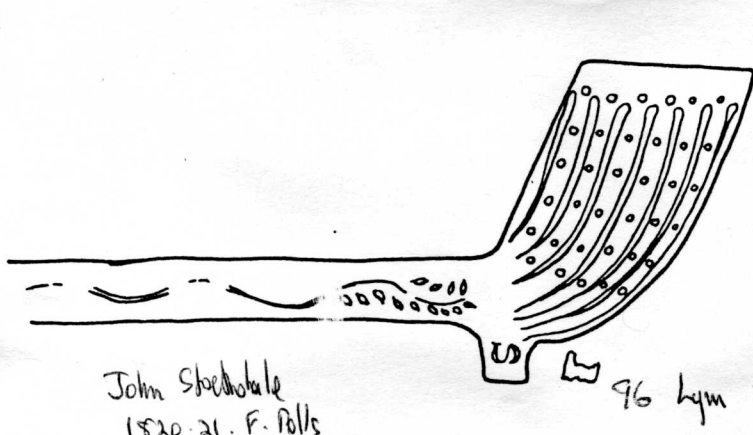
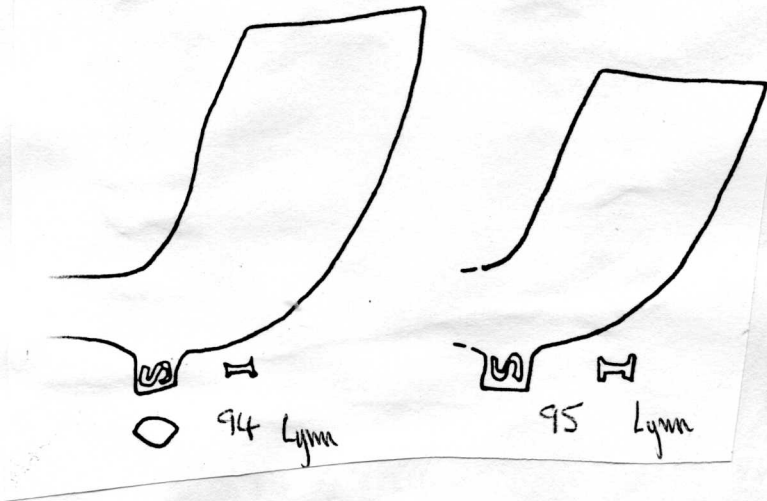
20



So/S. Chalford
 Westgate St. Glas

20

21



John Sheehy
1820-21. F. Polls

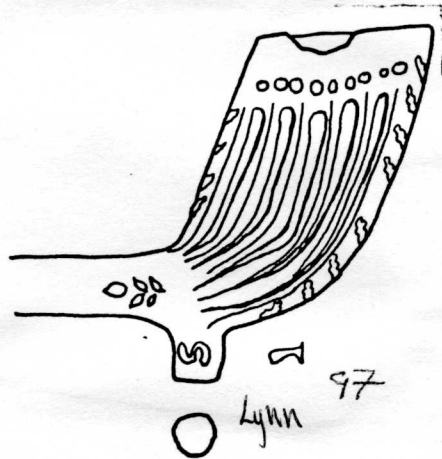
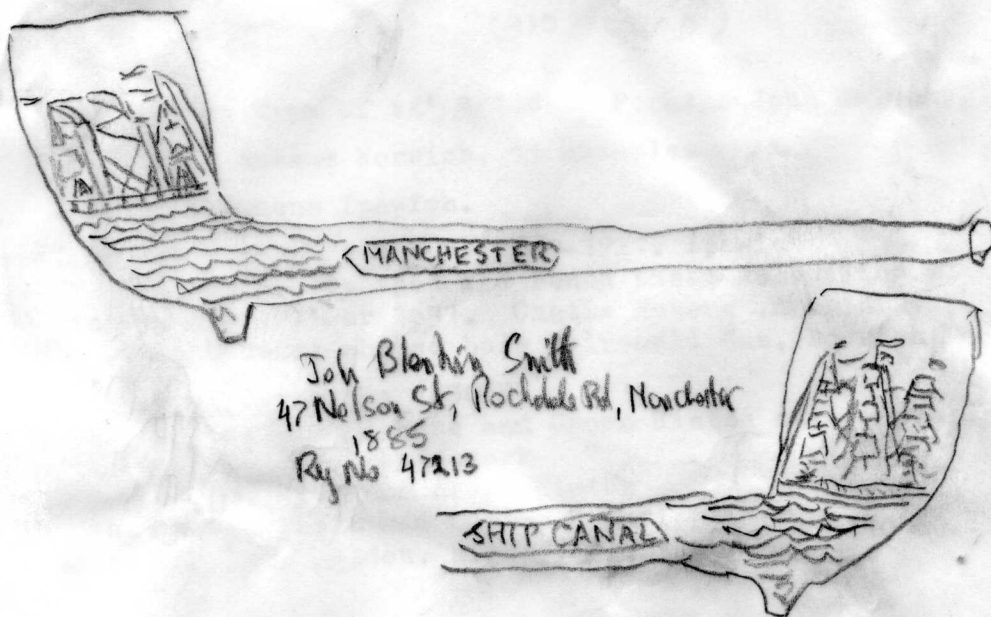


Fig. 7



24

Manchester

1. Wall (Stairs) and West Walsington.

2. Walsington, 1811.

3. Walsington, 1811.

4. Walsington, 1811.

5. Walsington, 1811.

6. Walsington, 1811.

7. Walsington, 1811.

8. Walsington, 1811.

9. Walsington, 1811.

10. Walsington, 1811.

11. Walsington, 1811.

12. Walsington, 1811.

13. Walsington, 1811.

14. Walsington, 1811.

15. Walsington, 1811.

16. Walsington, 1811.

17. Walsington, 1811.

18. Walsington, 1811.

19. Walsington, 1811.

20. Walsington, 1811.

21. Walsington, 1811.

22. Walsington, 1811.

23. Walsington, 1811.

24. Walsington, 1811.

25. Walsington, 1811.

26. Walsington, 1811.

27. Walsington, 1811.

28. Walsington, 1811.

29. Walsington, 1811.

30. Walsington, 1811.

31. Walsington, 1811.

32. Walsington, 1811.

33. Walsington, 1811.

34. Walsington, 1811.

DS
(9)G (G-1)

25. 1600-40 Incuse markd
a. Type 2.G. London. G.H.M.
b. " 4.G. " * Moorfields. Brit Mus. B.Smith Coll.
c. " " " G.H.M.
d. " " " Brit Mus. B.Smith Coll.
e and f. 4G. G.H.M.
g. Type 4G. G.H.M. London Mus.
h. Elkins Coll. B.A.RVI No1.
26. k Lower Coomon Bath L Barnstaple(Athenaeum)
1620-40. Relief.

- a. Type 4G. Polished. Smithfield. 1865. Brit Mus. B.Smith Coll.
White Hart. Colchester.
b. " London. Atkinson Coll.
c. " Bankside. G.H.M.
d. London. G.H.M.
e. Queenhithe Elkins Coll
f. Kings Mews, Holborn.
Type 5G. Bankside. G.H.M.

(9)H

- 27 a. Queenhithe, Elkins and Cheminant Coll
b. Elkins Coll
c 1650-60

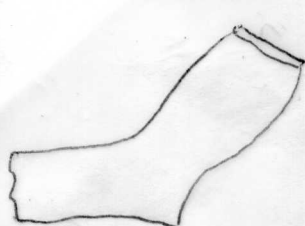
28. Q Cork Excavations, Polished but cracked side to bowl.
8/64, Smoked. c 1660-70.
b Glanworth Castle Co, Cork.

- 29 a. Elkins Coll and b. Cheminant Coll. Queenhithe c 1670-80.
c. Elkins Coll and d same type Cheminant Coll. c 1680-1700.
similar Kew Sewage Works, Rundle Coll.

(9)I

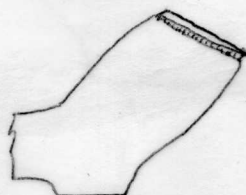
- 30 a. Tutters neck, Virginia. Wreck off the coast of Maine c 1710.
Wood St c 1740-50 and Bankside, London, Mus Lond. Lydd. Kingston on
Thames
b Crowned I/S Atkinson Cool London. Thames, Green Coll, Mus Lond.
c Willaims burg (photos) Portland Point, New Brunswick. Bankside and Sola.
Solander St, Mus Lond. Chiswick, Gunnerbury Pk Mus,
d. Bermondsey Excavations
e Oatlands Surrey,
f. II/SS Queenhithe Crowned, Cheminant Coll
g. Pauls Pier Wharf, Cheminant Owl.

L3986



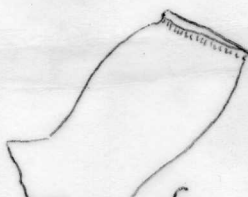
(15)

a



(15)

b



(15)

c

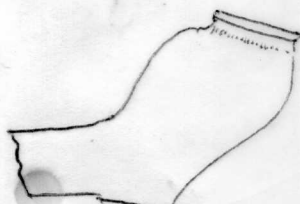


(15)

d

Lower Comm. Bolt

15



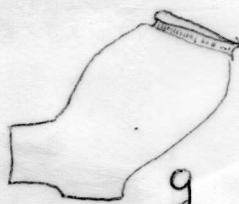
(15)

e



(15)

f



(15)

g



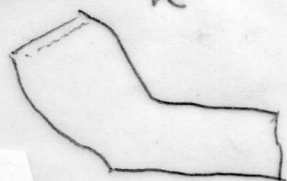
(15)

h

Elms Gd. BARVI.

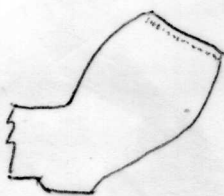
(15)

k



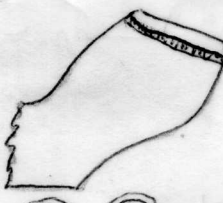
(15)

25



(15)

a

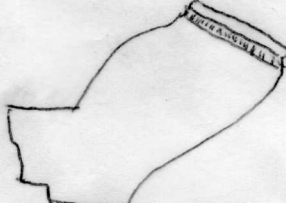


(15)

(15)

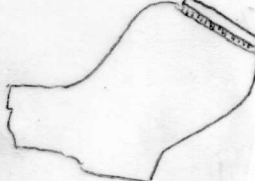
b

21



(15)

22



(15)

d



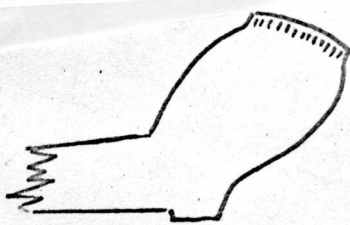
Elms Gd

(15)

Incase m.
pipe. - no bowl.
- Queenhithe.

e

(12)



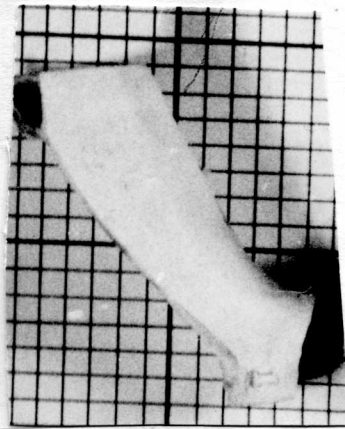
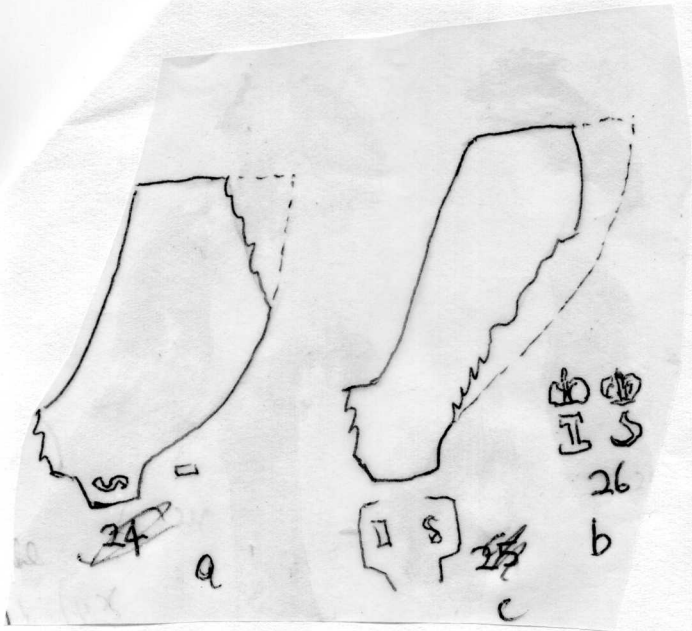
Kings Mans
Hilben

f

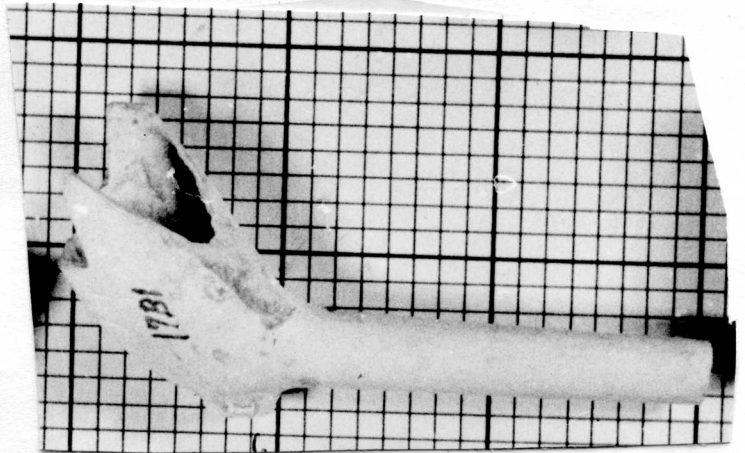
26

26

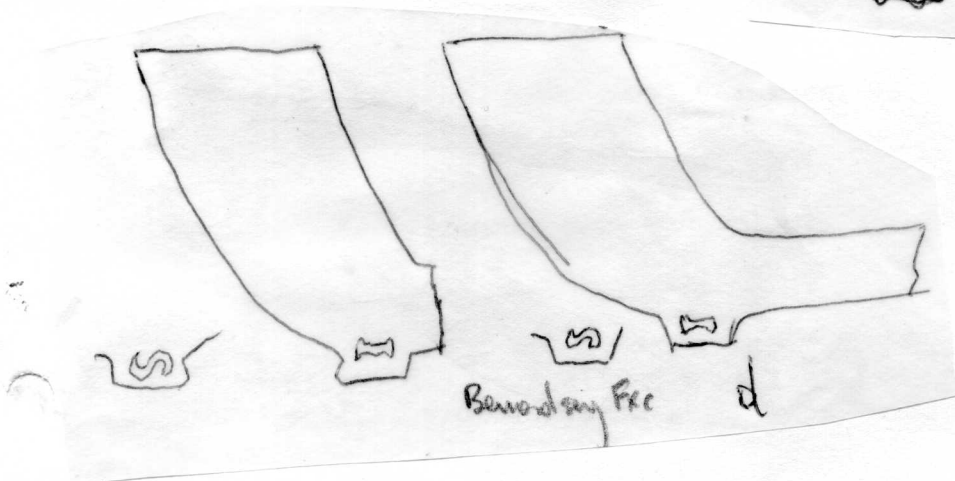
(9) I



c

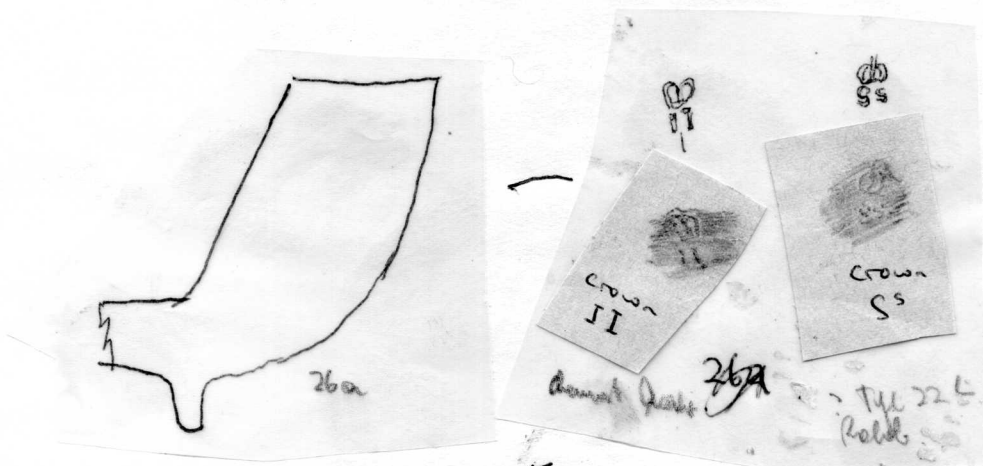


Williamsburg c



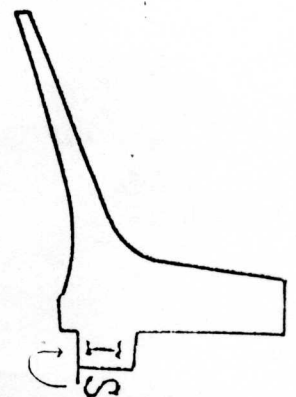
e

B.A.R. VI



F

26



New Seville Junction
Fig. 1

S83/ 132/I/270

(9)I

Slaggy lion

Handsome - Arm
+ Hump



No decorative
or front

Definitely
dieu IT



Coll.

Cheminant Coll

Pauls Pier

G

- b. " London. Ash Col
c. " Bankside. ~~26~~ 30
d. London. G.H.M.
e. Queenhithe Elkins Coll
f. Kings Mews, Holborn.
Type 30. Bankside. G.H.M.

- a. Queenhithe, Elkins and Cheminant Coll
27 b. Elkins Coll
c. 1650-50

28. Q Cork Excavations, Polished but cracked side to bowl.
8/64, Smoked. c 1650-70.
b Glanworth Castle Co, Cork.

- 29 a. Elkins Coll and b. Cheminant Coll. Queenhithe c 1670-80.
c. Elkins Coll and d same type Cheminant Coll. c 1680-1700.
similar Kew Sewage Works, Randle Coll.

(9)I

- 30 a. Tatters neck, Virginia. Wreck off the coast of Maine c 1710.
Wood St c 1740-50 and Bankside, London, Mus Lond. Lydd. Kingston on
Thames
b Crowned I/S Atkinson Cool London. Thames, Green Coll, Mus Lond.
c Williams burg (photos) Portland Point, New Brunswick. Bankside and Sol
Solander St, Mus Lond. Chiswick, Gunnerbury Pk Mus,
d. Bermondsey Excavations
e Oatlands Surrey,
f. II/SS Queenhithe Crowned, Cheminant Coll
g. Paula Pier Wharf, Cheminant Coll.

(9)K (K-L)

James Swinyard. 1828-54. Westminster

- 31 a. London, Mus Lond.
b " " Atkinson Coll.
c. Aberdeen Excavations and Edinburgh (as no 41)
d London, ~~Takman~~ Coll.
- 32 a. St Mary le Bow, Mus Lond. I/S on spur
b. Atkinson Coll J/S " John Smith(5) Wapping 1844-62.
c. Stoney Stratford I/S " From Cosgrove N of S. Stratford.
d. Fulham pit c1820-30. Atkinson Coll I/S .
e. Cheminant Coll. Type as d.
f. SMITH/PECKHAM probably Charles Smith 1845-54 Peckham. Atkinson Coll.

- 33 Hogarth House, Chiswick. Kiln. Gunnersbury Pk Mus . all 4/64.
(1) has the mould line left. (2) a waster. (3) used in muffle fragments
(4) London Rundle Coll. Jersey.

Also type 15G. Gunnersbury Park Mus, Oxford Excavations, Guildford Chertsey Bookham.

(9)L.

- 34 James Silk. 1862-90 Globe Road, London.
a. and b Cuming M^s. and Barnes spurless pipe, with SILK/GLOBE Rd, incuse on stem, Atkinson Coll.
c. Thames . Thames Cheminant Coll. incuse.

- 35 Whittington pipe with cat on back. Stem J.SIMMONDS/PROPRIETOR incuse.
Left side bowl. WHITTINTON ~~STONE~~ Right hand. WHITTINTON
STONE THRICE
HIGHGATE HILL LORD MAYOR
IV OF
MILES TO LONDON
LONDON BORN 1350.

From Highworth Wilts.

Also without stem mark. Scunthorpe M^s. G.H.M. Wills M^s,
Bristol from Clapham. ~~Can~~ Essex. Cheminant Coll.

For article on Whittington pipes see Cheminant(files)

- 36 James Smith 1872-1903. Eton
Cheminant Coll. I/W on spur. Probably J/Walsh 1846(D)Eton
(Shows mould life of c.30 years.)

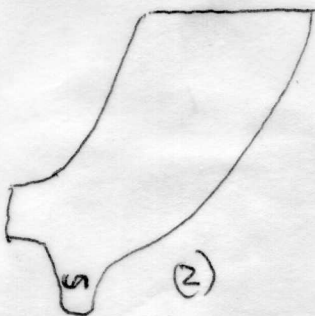
- 37 ~~410~~
~~32~~ A. Sundry J/S as (10) Egham, Otford dump see 29 above bottom
and type 13G I/S Rye and Romney Marsh. 1800-20. (v. Atkinson Sussex p.38.
Also J.SPAULL. incuse stem Mus Lond.
J. SMITH stem probably incuse. Weybridge.
And Atkinson Sussex. p 38. Small pointed spur. Serif initials. Steyning.

37 Bis. J. SMITH / UPTON PARK c1900 - Cheminant Coll

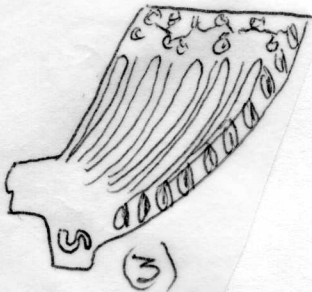
OK



(1)



(2)



(3)



33

(4)

~~291~~ 33

61



a



b

24 31



31

~~27~~ d



41

Shedden



42



43

31

~~27~~



32

~~28~~

- c1

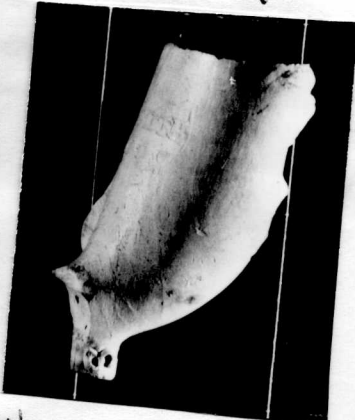


a



b

32



Swingard



c

256

Clement Cell thin bowl.



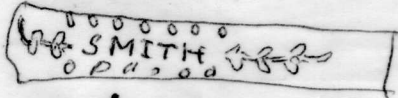
e

Under Type 33

32

~~28~~

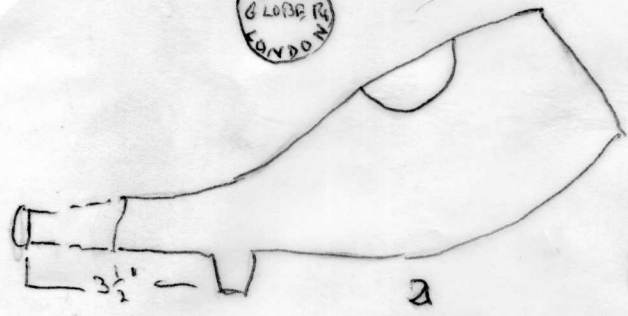
PECKHAM



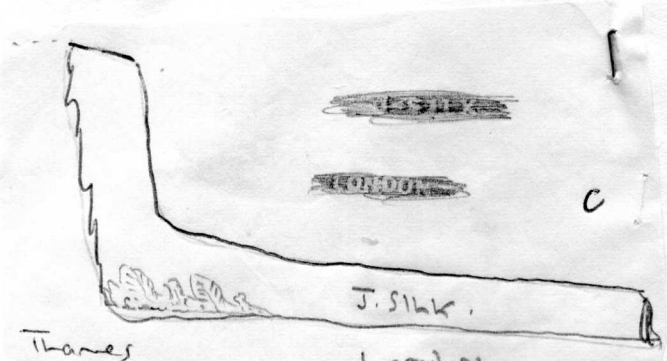
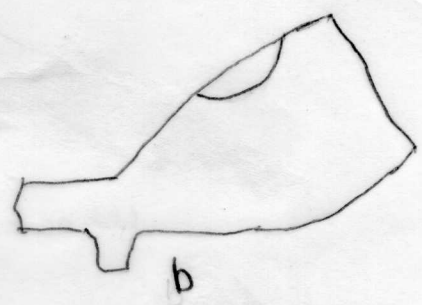
f

(9) L

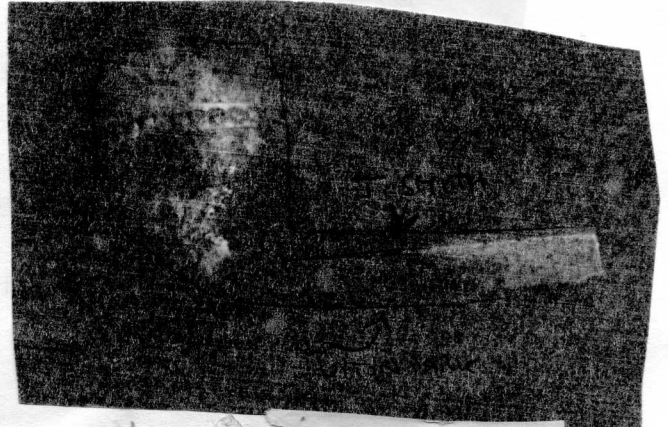
J. SILK
GLOBE ST
LONDON



34
BA



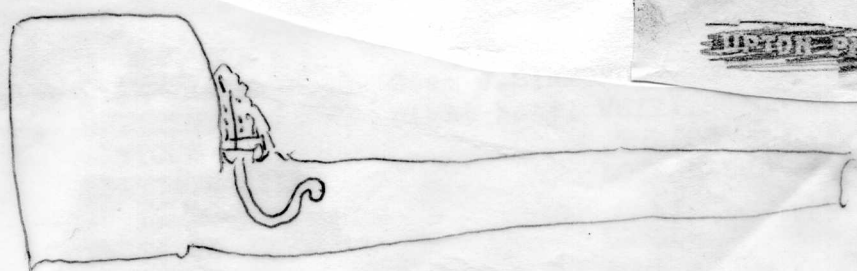
Thames
cf Silk | Rabey rubbing previously sent



Clement
Coll

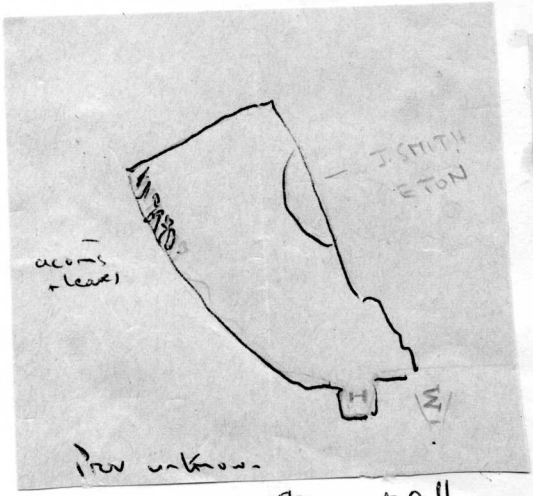


37
BA
Bis



35

37



acorns
(leaves)

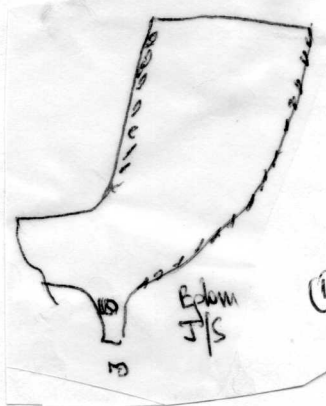
Prov unknown

Clement Coll



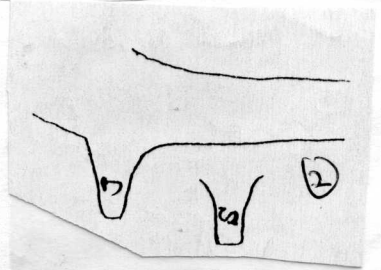
W

I



(1)

37
BA



(2)

Otford Dumps

36

9
(39) M.

IS

John Sims 1691-1717 Winchester.

38

a Base mark. Maiden Bradley and Hindon(photo). c1680-1700 (2+upls)

b,c, d. Stem marks.

b. Winchester, Moggridge Coll. Many same type from George St Exc.
also Bishops Waltham well.

c and d Winchester Exc, marks occur on both pipe types.

Micheldever Exc. 1975.

Type 17W. Unknown maker, W. Country area. c.1700

39

a. Worcester Mus

b. Rippon Coll, Exeter Mus.

c. Binfield Drawing, Exeter Mus probably of mark b but different lettering.

40 Perhaps John Snowden, Teighnmouth 1866-75.

Type 14G Exeter Mus.

~~1700-50~~ will prove (not sold)
Joel Sanger c1700-30, Salisbury area

Stem marks.

a Salisbury, Atkinson Coll and Oswald Coll(Endless St). Shaftesbury.

b Salisbury, Atkinson Coll, Shaftesbury, Winchester Exc.

Hindon.

c Type 15S. Salisbury, Atkinson Coll.

d Salisbury, Oswald Coll(Endless St).

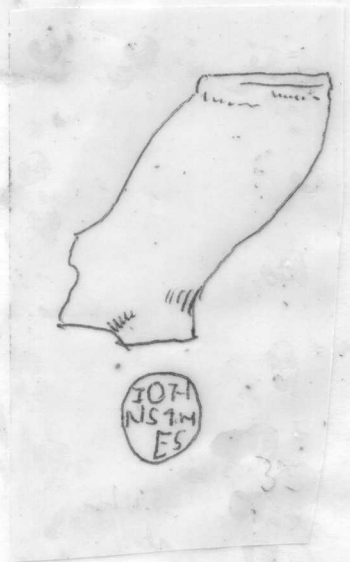
And Hindon - Wills (e) Church St Dorchester

41

42 Type 5S.

Base mark. Newbury Wharf, Newbury Mus.

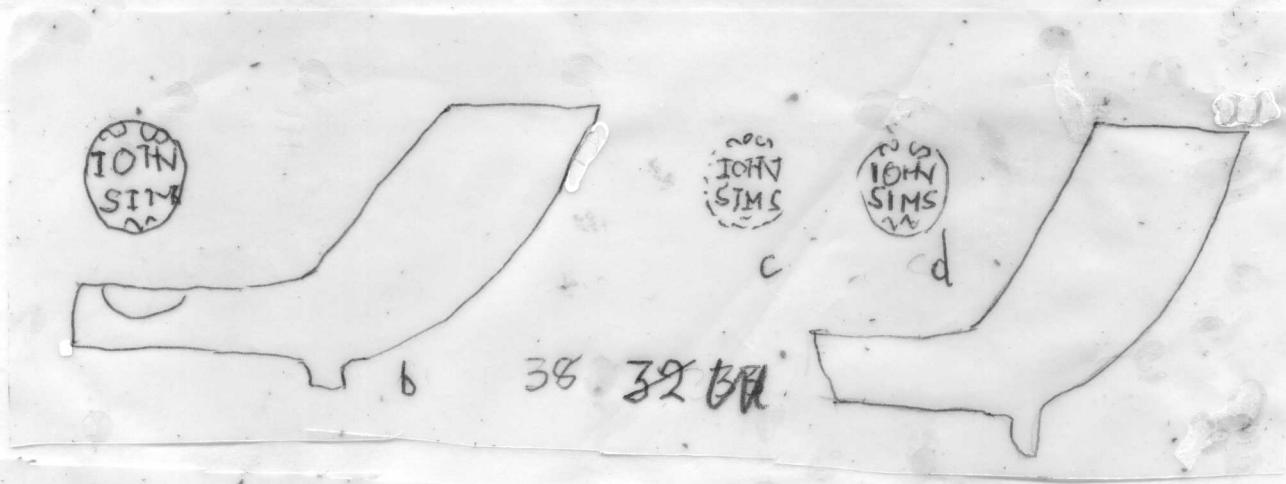
(47) (9) M



38 a



38 a



38 39 BR



34 35 40



Hindon



42 30 31

Chad St. Dorek



e 4

9
(18) N

IS.

43

John Stephens 1708-51. Newport, Isle of Wight. Probably Sen and J_nr.

a. Dover Exc.

B. Oyster St, Portsmouth

c Southampton Exc.

d Hythe, Hants. Thick stem. d1 Newport and Cowes beach(rubbing)

e Hythe Hants, N. reversed, thin stem Portsmouth.

g. Louisbourg

h. " Reversed N's.

Also with marks as d with slight variations from Hythe.

F Oyster St, Portsmouth - Port Med Arch

A. Hythe Hants c.1740 Possibly Stephens

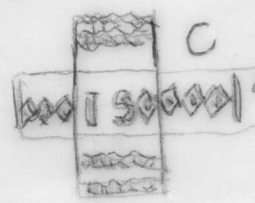
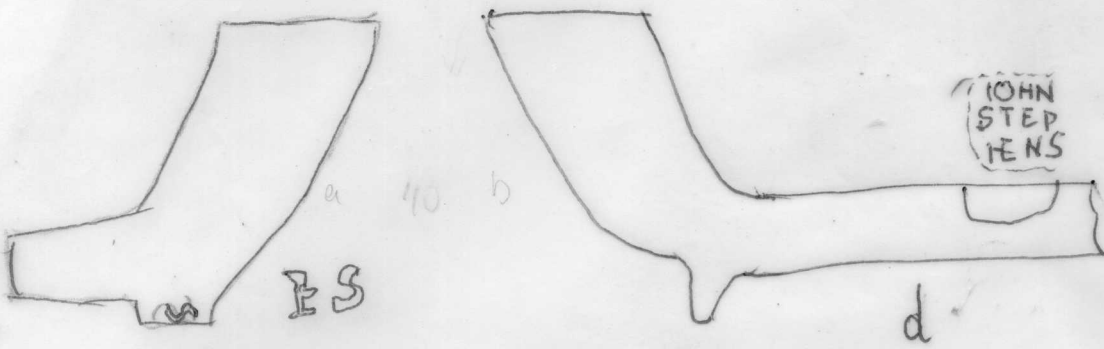
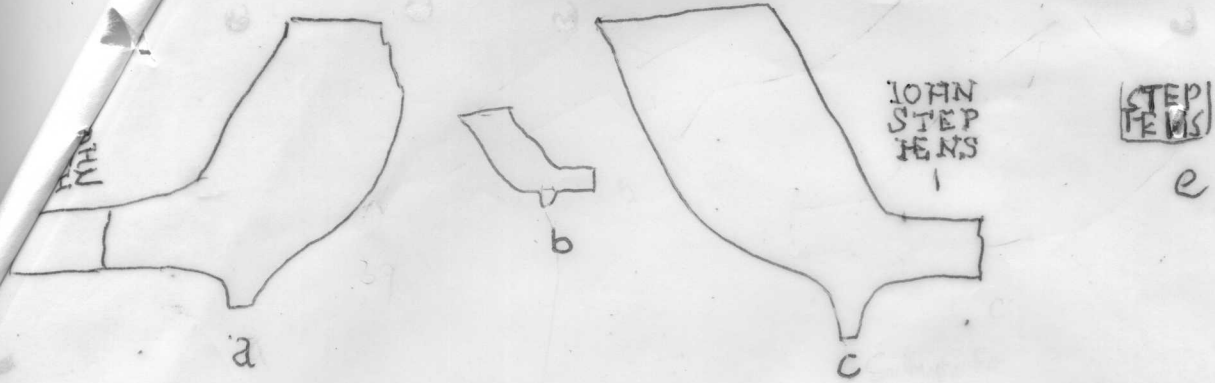
B Port Royal, Mayes Exc.

Atkinson notes a John Stephens stem from Eastbarrow.

C Angelica Knoll, Maryland
St Marys City " St 1-13 e Van Schuerwen Site.

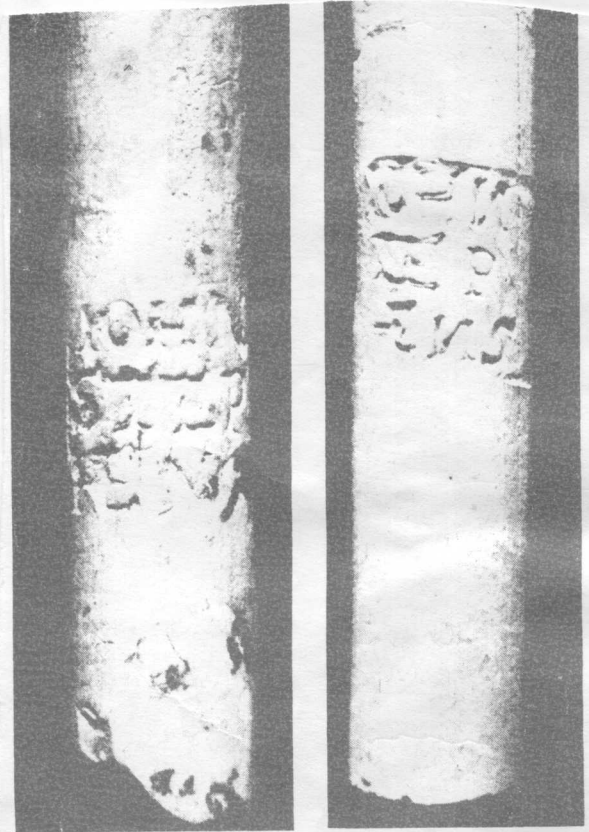


(18)
(9)N
1



Angelica, N.Y. Mary land
e Stryker's City - 51-13
e Von Scheraga site 1665-1740-7

Van Swegen Site
Stryker's City



3. Two stem fragments bearing name of pipemaker John Stephens. Note minor differences in the two stamps.



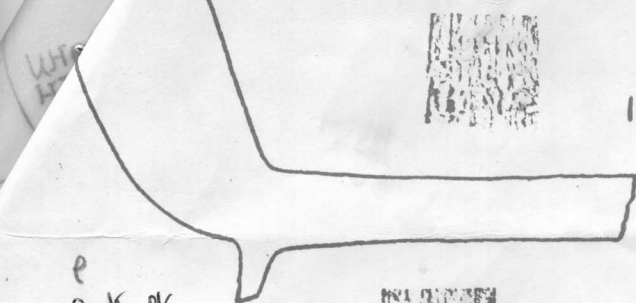
43

STEPHENS PIPES
Newport, Isle of Wight.

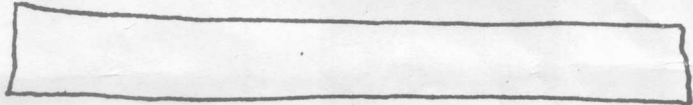
40 x

1/a

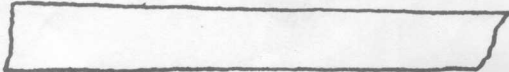
Hythe or Portsmouth



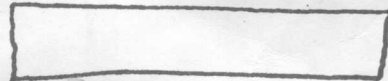
1



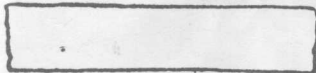
8



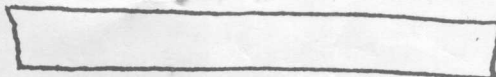
2



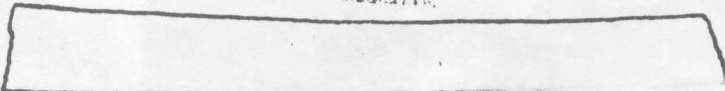
9



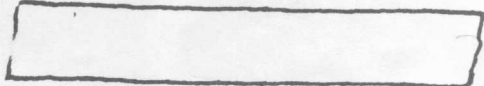
3



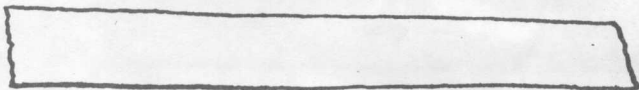
10



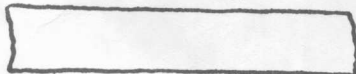
4



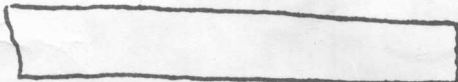
11



5



6



7

1-3 Portsmouth. Thin stems.

4-5 Hythe - thick stems, horizontal oval.

6-10 Hythe - medium/thin stems, vertical oval.

11 Hythe - R. Stephens. One other example, Portsmouth Museum.

None of these pipes has wide bore - all are medium to narrow. My dating, c.1720-60.

Only 10 shows the 'N' reversed.

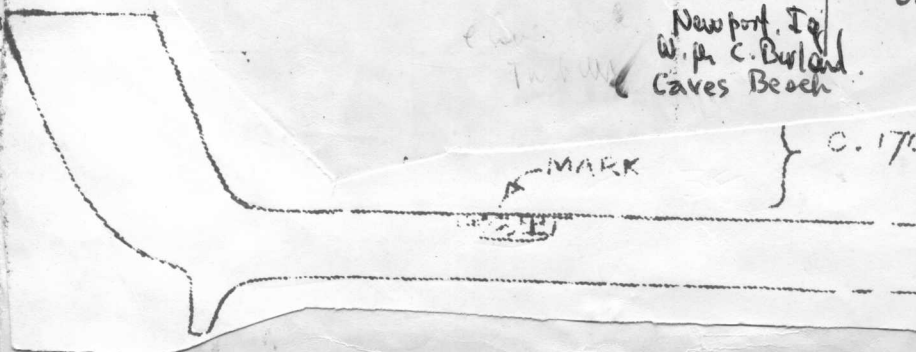
Newport, Is.
W. P. C. Burdall
Caves Beach

c.1700 - 1750

MARK

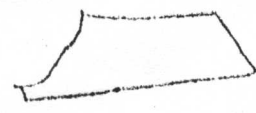


Hythe
1643.



?
I S
mm

NS
VSV

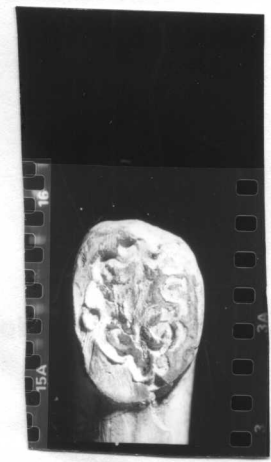


Wood Gray-Parker

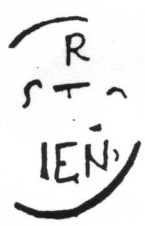
? Plaster Model
c 1600-20

? SVS
IS
SS.

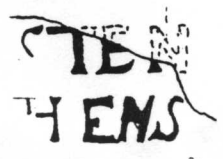
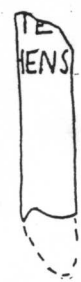
5/12/13/18



XX
259



501



IS

44 Possibly Joseph, 1852 or John Sims 1876, Oxford.
From St Ebbes Exc. { 5 spurs from Hindon. &

45 J. Sants 1856-61 Bath

Photo From Teffont, Wilts, Spur missing. Downton, Christchurch.

Pipes from Bath excavations

46 Perhaps John Smith 1709-25. Aylesbury
From a field 3 miles SW Aylesbury.

a. Holywell Kiln, St Albans $\frac{1}{2}$. c 1720.

Also I/S. Royal Arms, Pusey Coal, Southampton

47 JOHN SPARKS ? c.1770 Ireland

a Wood Quay Dublin

b Drogheda.



Paul S spurs Hendon, Wilts ~~44~~
Oxford Excavations 44

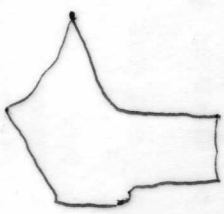


WILL SPARKS

Wood Quay
Dublin

47a

E 132 64566



All
3 miles
S. W. Aylesbury
? John Smith
1709 - 25. Aylesbury.

40 46



1/5 1/2

Holywell kiln.
St Albans

46a

~~46a~~



47b

JOHN SPARKS

John Sparks
No record
c 1770?

Drogheda

Joseph Sants is recorded in Bath as a pipemaker between 1837 and 1871, manufacturing at 10 Bridewell Lane until 1851 and at 27-29 Milk Street (where he owned a pottery) thereafter. The pipes found in 1982 have been dated to between late 1867 and late 1869.

Special thanks must be given to Mr. R.C. Jolly of the British Rail Property Board for his permission to carry out the work and to Paul Harper of Bristol for his help on the excavation.

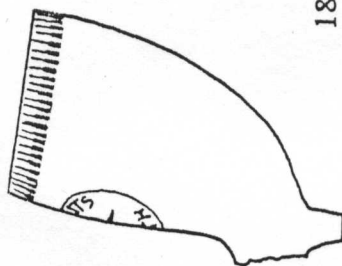
Marek Lewcun

J. SANTS

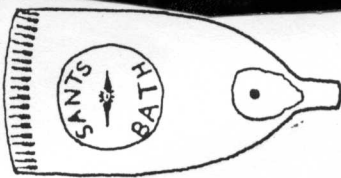
BATH

also 10010 FCC
post 1940

17

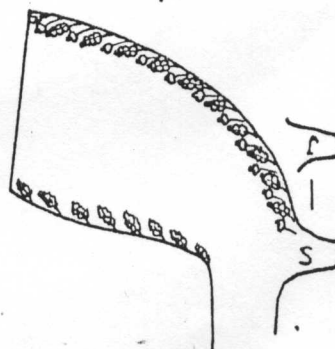


18

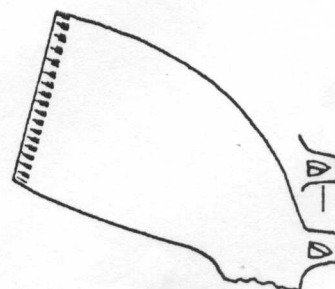


Geffont
W. H. S.

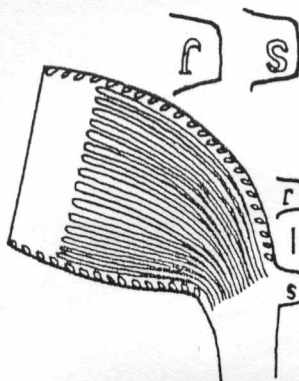
45



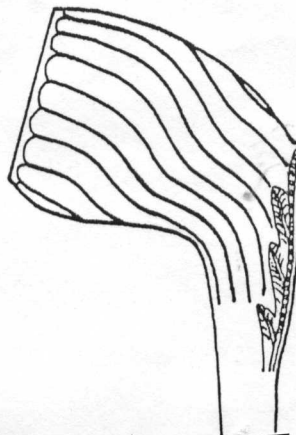
20



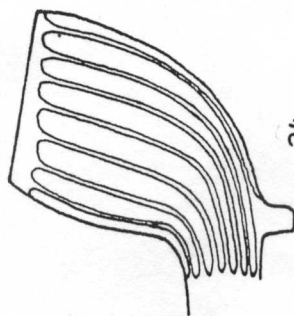
19



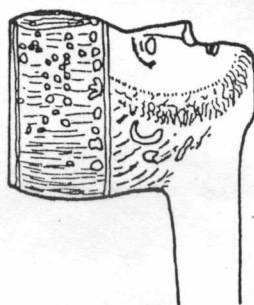
23



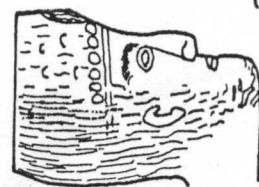
25



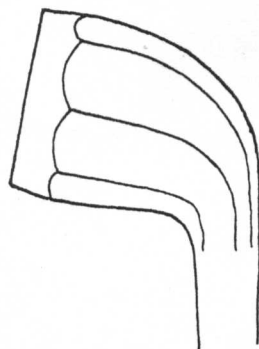
24



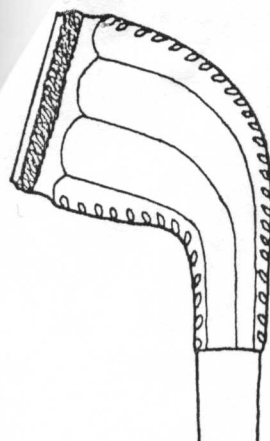
26



27



21



22

9(0)

Joseph Sants 1837-71
Pipes dated by excavation
to 1867-69

12

13

IS

Type 13 G.

48

- a. Lymington. (Oswald Coll)
- b. Christchurch, Wimborne.
- c. Christchurch, Excavations 1974. - Weybridge, Ewell
- d. Wimborne.
- e. Winterborne Anderson. Dorset.

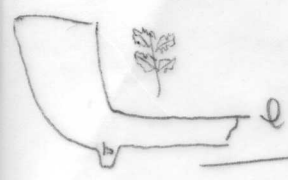
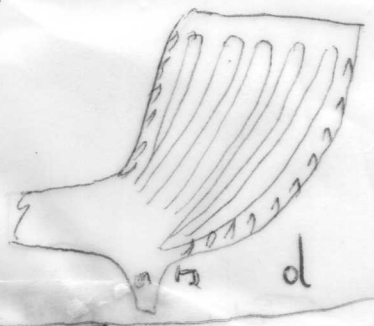
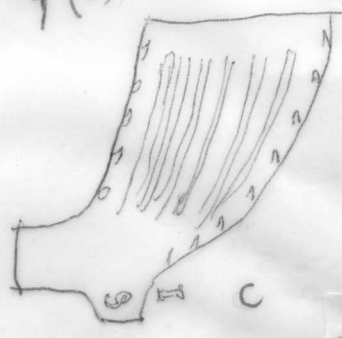
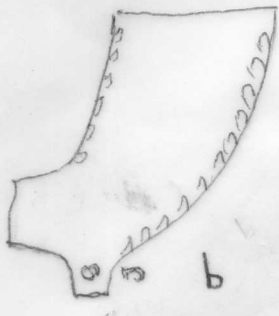
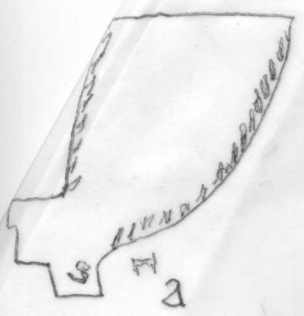
49 Types 11, 12, 16, B. 1700-30. I/S all Bath.

50

Bristol Makers.

- a. Type 11/12 B. 1690-1740. Rosemary St. per Marochan. Port Royal (Mayes0)
- b. Wills Mus.
- c. Cheddar excavations. Bristol (J & P)
- d. Port Royal and Mayes Excav 1680-1740
- e. Type 11 B. Bristol. J & P. 235.
- f. Type 12. B. Bristol J & P 239. Port Royal. Also with IS incuse on back. Mayes Excav Port Royal 1680-1740
- g. Type 11 B. $\frac{1}{2}$ Street, Worcs. same mark as H.
- h. Port Royal and with mark d on left side bowl.
- i. Bristol J & P 239. Probably type 15 B
- j. Bristol J & P 232. Type 10/11 B. Port Royal with mark d on right side bowl
- k. Type 13 B. Bristol J & P 233.
- l. Port Royal.
- m. Port Royal
- n. Hales Abbey, Worcs. Port Royal Mayes. 1680-1740.
- o. Port Royal.
- p. Church St Dorchester.
- r. Wellington House Cheddar, SCPR 15.

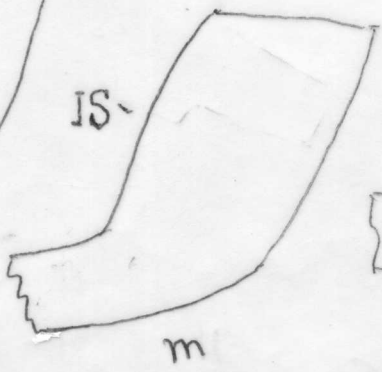
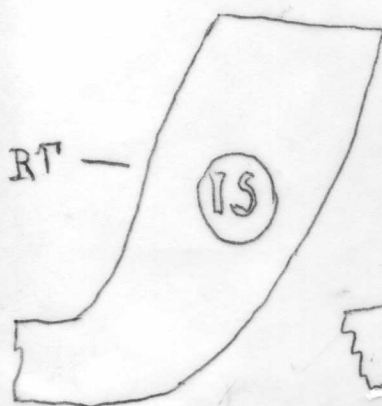
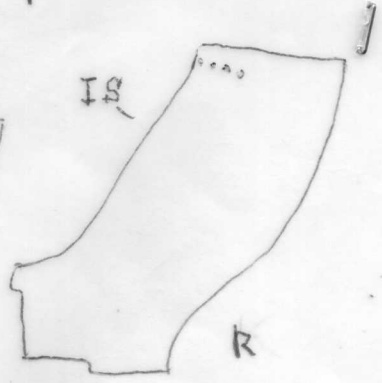
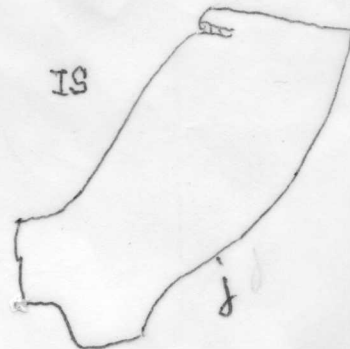
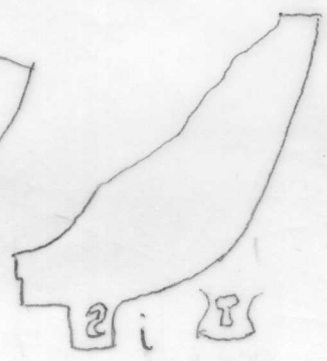
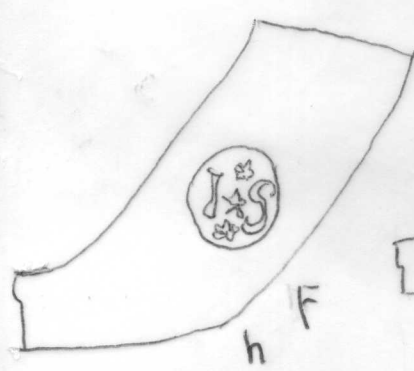
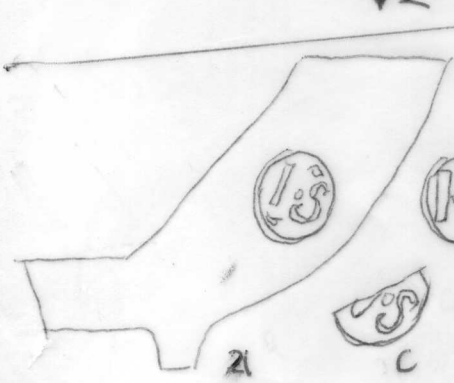
9(P)



~~4A~~ 48



Arch St
Dorchester
4 examples



~~4A~~ 50