



THE NATIONAL PIPE ARCHIVE

Registered Charity Number 1043065

Accession Number: LIVNP 2014.01.192.P (Part 1 of 2 AP-IP)

Description: Clay tobacco pipe mark index, compiled by Adrian Oswald.

Comments: These are marks with a P surname initial. Arranged alphabetically by Surname (i.e. AP, BP, CP, DP, etc.). Each section starts with a typed list giving details, including provenance for each piece, which have an identifying number that is a simple sequence of numbers (i.e. 1, 2, 3, etc.) occasionally with sub-lists, if there are more than one example (i.e. 1a, 1b, 1c, 2a, 2b, etc.).

Key Words: Clay pipe; heel mark; Oswald;

Any images in this PDF must not be lent, copied to another party, sold or reproduced in any way without prior permission from the National Pipe Archive and the copyright owner, if applicable. Reproduction or publication in any medium is expressly forbidden without written authorisation and should include an acknowledgement worded 'Courtesy of the National Pipe Archive' and quoting the relevant accession number.

(1)

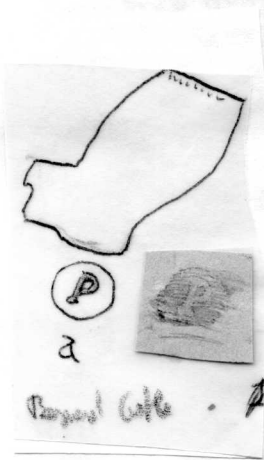
P

1. a Baynard Castle London. Cheminant Coll
b. Queenhithe Cheminant Coll.
c Carters Grove Virginia. Site B Pit A. 1631 +
d Dublin Castle.
All incuse. date range. 1620-40 $\frac{1}{2}$
2. a. Castell Goch. Tongwynlais. St Fagans Mus. Stem mark ? incuse
Scale 1" square.
b Queenhithe Elkins Coll.
c " " "
d Richmond Palace scale $\frac{1}{4}$.
3. Pierffe & Co Manchester. c 1880-1910
a. Chester.
b Cheminant Coll Giant size.
4. a Oyster St Portsmouth
b Donyatt Excavations
c Taunton, Binfield Coll, Exeter Mus.
5. W. Pardoe 1832-67. Nantgarw 1832-67 Bristol & Nantgarw.
Mrs Pardoe Nantgarw 1867-78.
a Cheminant Coll. from near Caerphilly
b St Fagans Mus also Wolverton & London.

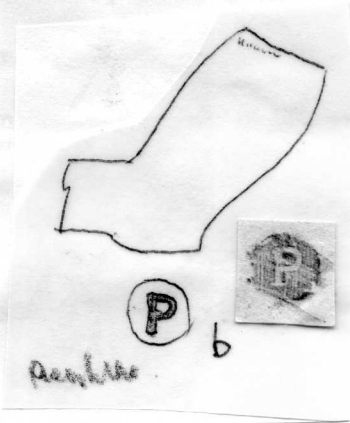
Also.

Type 10G Rosette/P Gateshead
Stem)PLIMSO(11 Poole
Stem PROCLAIM/APRIL 13. From U.S.A per LT.Alex ander.
PAGE/GAINSBOROUGH. c 1830-50. Hammond Coll Nottingham

Pa) KEHAM/STONE(house Plymouth Excavations.



a
P
Penguin Castle



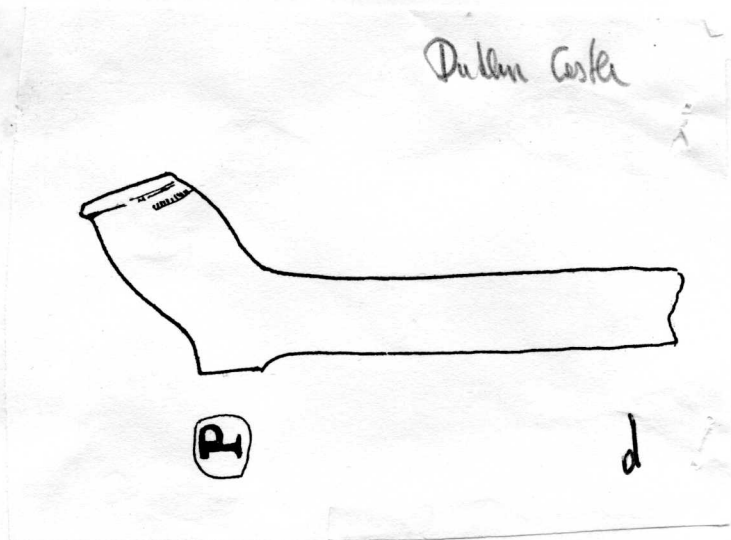
b
P
Penguin



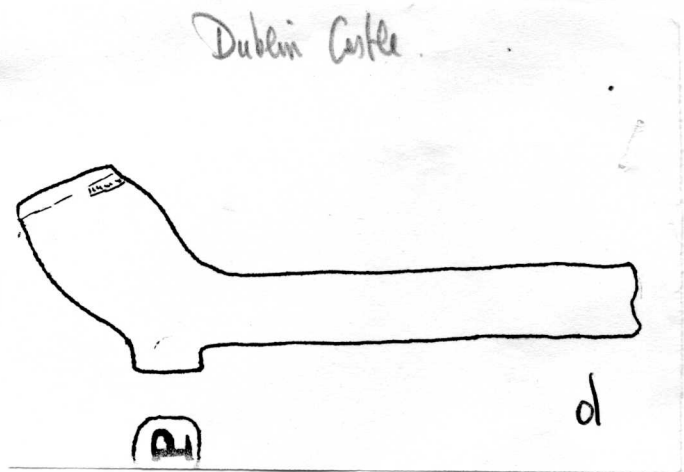
c
P
C
Gutter Groove Side B P.F.A 1631t
Gutter Groove Side B P.F.A 1631t



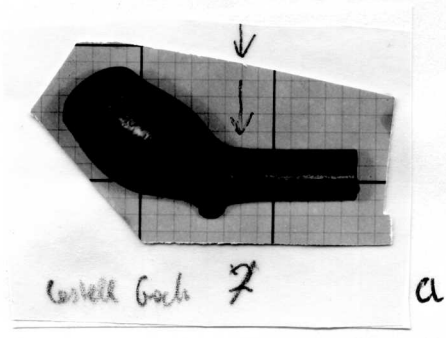
Dublin Castle
P
d



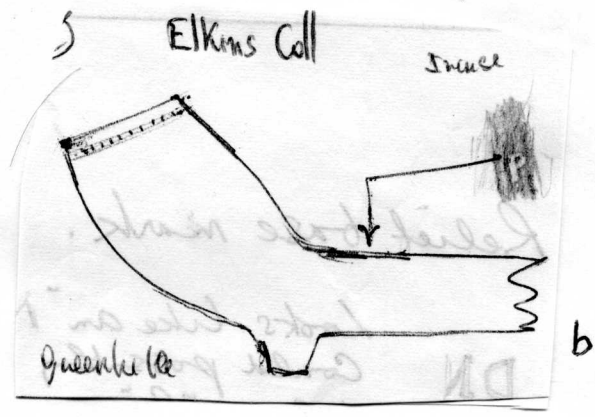
Dublin Castle
P
d



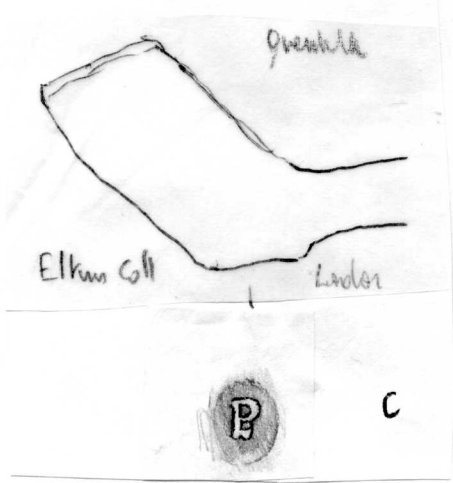
Dublin Castle
P
d



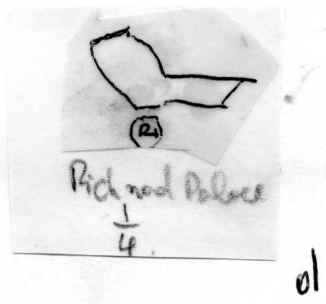
a



b

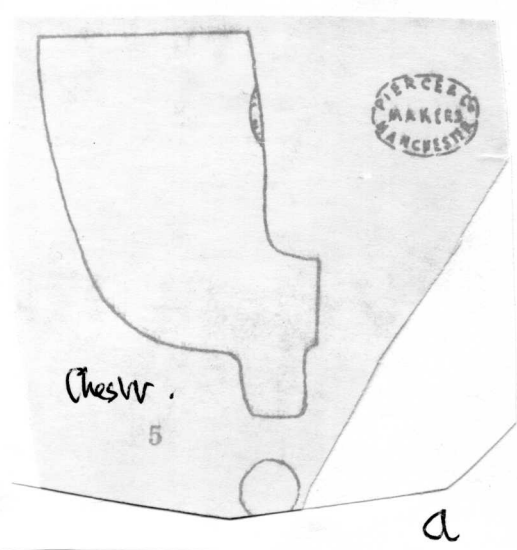


c

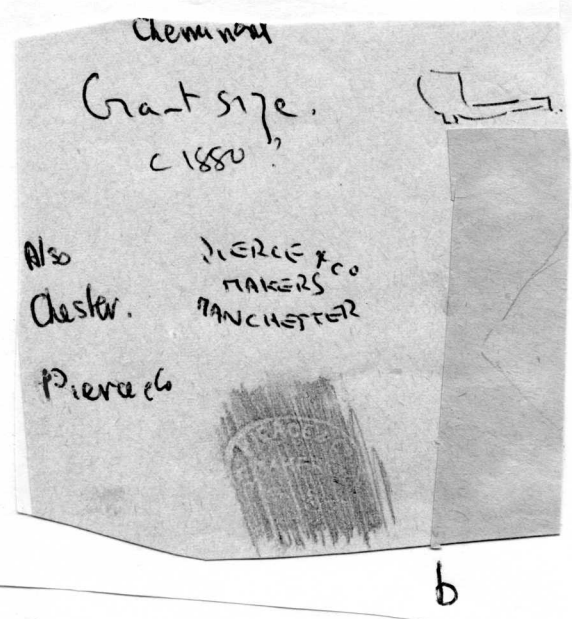


d

2



a

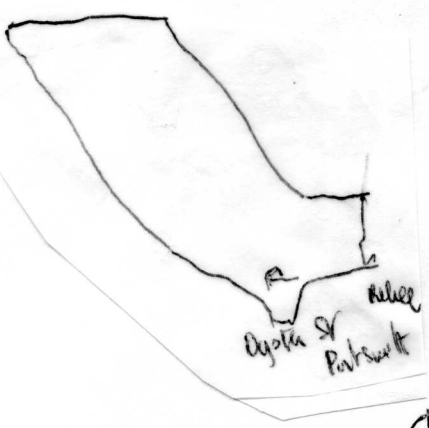


b

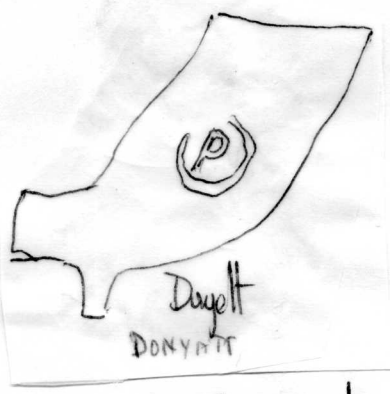
3

①

③

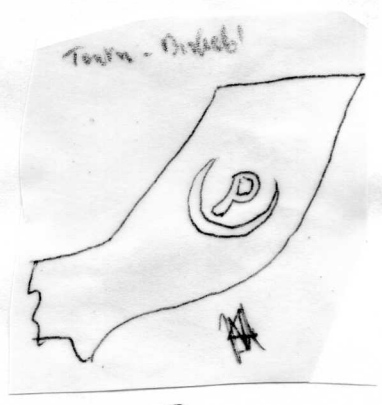


a



4

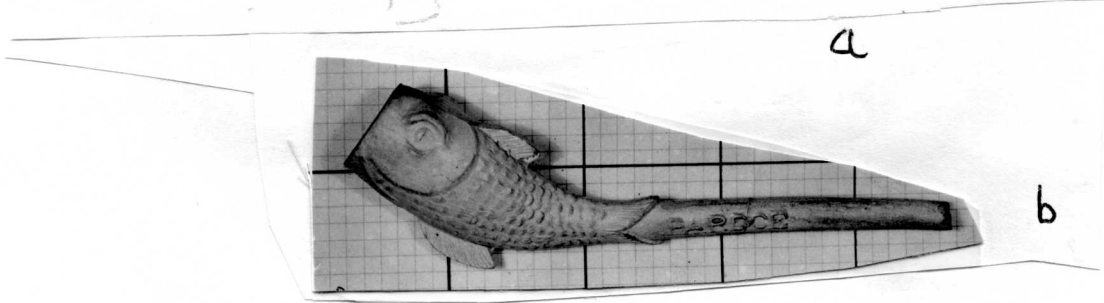
b



c



a



b

5

(2)

AP

1. Provisinal Patent No 519 by Julien Desire Briet. Mar. 15. 1858.
Patented by Archibald Allan Percy Glasgow 28.6.1880
 - a. Wester Fulwood Manor Renfrewshire.
 - b. Cheminant Coll
Also Hammond Coll.

2. Chester incuse *Fulham 1550-1640*

3. Atkinson Coll.

4 Wapping Elkins Coll

(1)B

5. Posenor & Co. Adolph 1878-99 David 1866-94. Mansell St in Directories. London.
Adolph Rupert St
 - a. Edinburgh High St excavations. 1975/6. P.S.A.S.
 - b. Cheminant Coll.
 - c. Coventry Mus.
 - d. Mouthpiece David Bedeford Excavations.
 - e Boston Lincs, Bow excavations
 - f. Otford Kent Dump.
 - g. Strangers Hall Mus, Norwich
 - h Queenhithe- Cheminat Coll
 - k. Buckley Potteries.

Fulwood Manor House Penzance

BREVETE GLASGOW
BREVETE

A.A. PERCY'S PATENT

A. I

1858 16 K

Patent Julien Desiré Briet

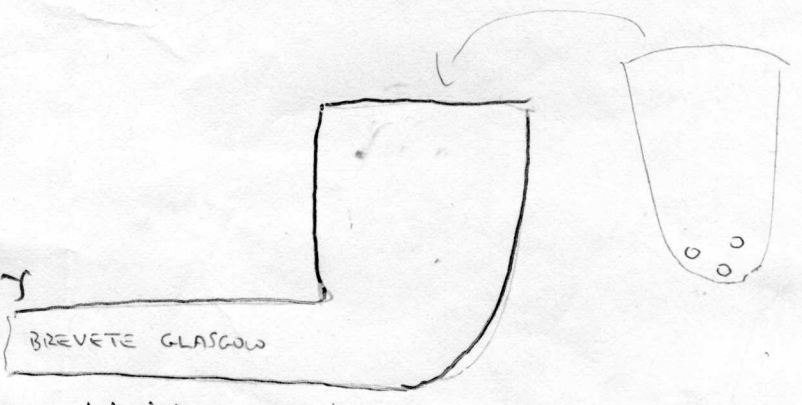
See Hammond -

a

Found Stony Stratford.
Removable inner bowl/filter
patented by Archibald Allan Percy
of Glasgow 28.6.1880.
Patent number 2634 of 1880.

Percy apparently had 5 patents relating
to pipes.

(Shown in your lists under
Scotland - should entry be
under P & not A?)

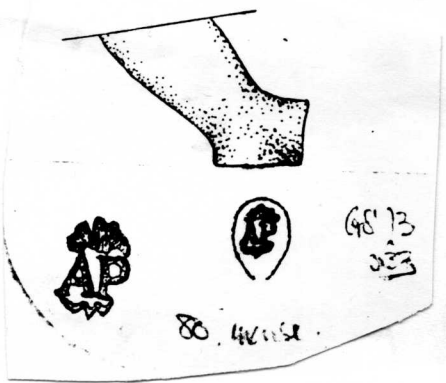


A.A. PERCY'S PATENT

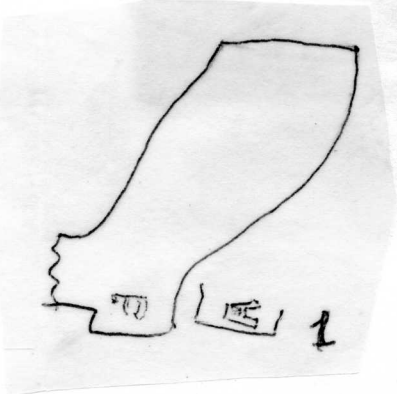
b

Chemist Cell

1



2.



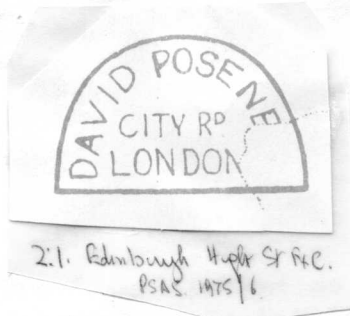
3

Relief AP - Wapping,



Relief AP - 4

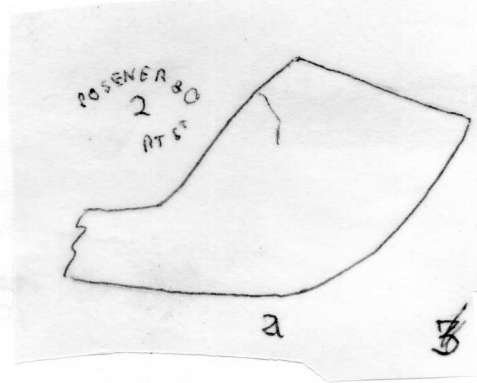
~~Wapping?~~



a



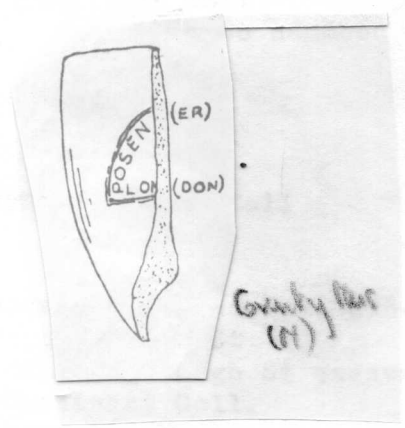
b



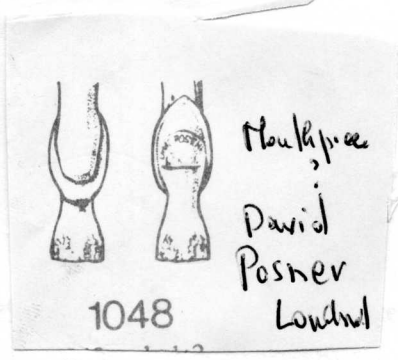
a

~~3~~

e



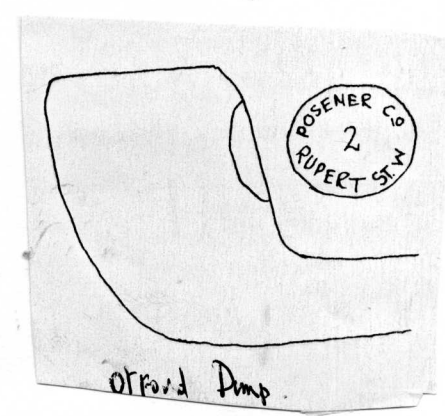
c



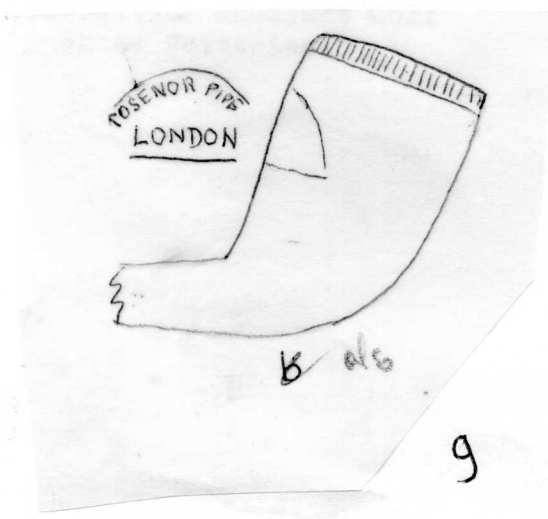
1048

Red pond fixations

d

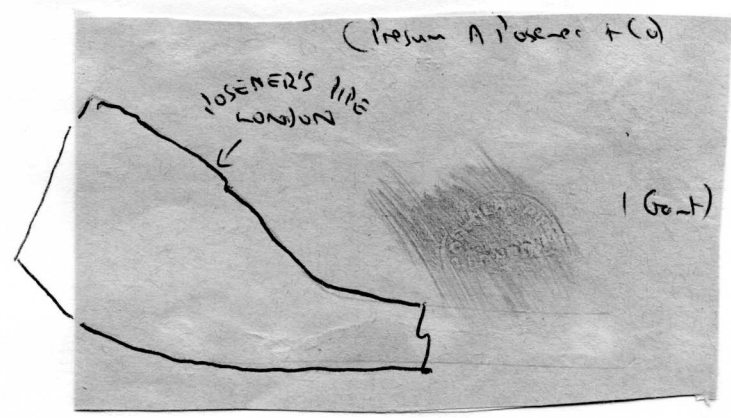


F

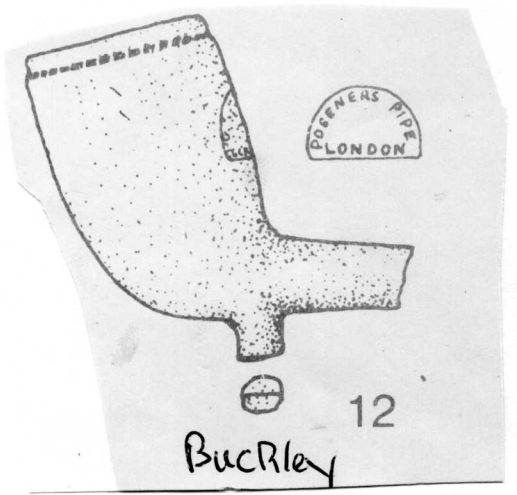


b also

g



h



k

~~5~~ 5

(3)

BP

1. a. Black Gates Excavations. Newcastle on Tyne.
b. Pit. The Castle Newcastle 1640-70.
2. Dunboye Castle, Co. Cork. 1650-70
3. **Swaffham Norfolk**
Also. Type 8S. BP in a heart on the base. Salisbury Atkinson Coll.
Types 10 and 11G B/P Thames Green Coll, Mus Lond.

White Key - Dyed Red
 extra rubber
 Dyed in a dye.
 P. 12

Black Gore from
 Newcastle on T.

Novella

OX patch

234

Pit-Gaskell
 Newcastle
 1640-70

2a P.

a

1

Pit-Gaskell
 Newcastle
 1640-70

b

1

BE

Dunlop Gaskel, Co. Cork
 1650-70

2

84
 Suffolk

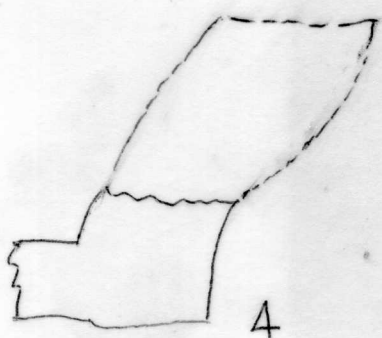
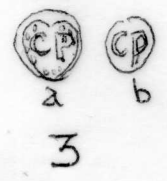
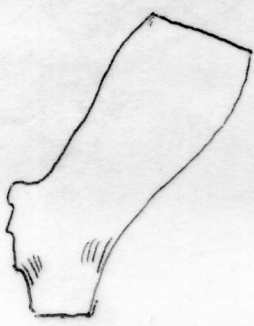
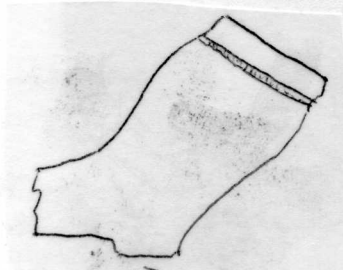
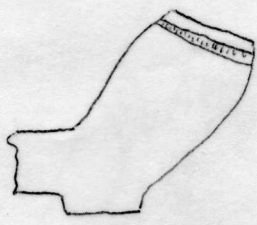
3

(4)

CP

- 1 Worcester ? Broseley type 1. π .1640. Also Shrewsbury Mus
- 2 British Mus, Bragge Coll.
- 3 Type 2By. Coalbrookdale and Rhursfield Colls.
a Broseley
4. Withcolm. Taunton Mus.
5. ? Incuse. Tailed heel Llanmaes. Walws. (Med and later Wales.)
(4)B.

City Ditch. Oxford. c 1800.



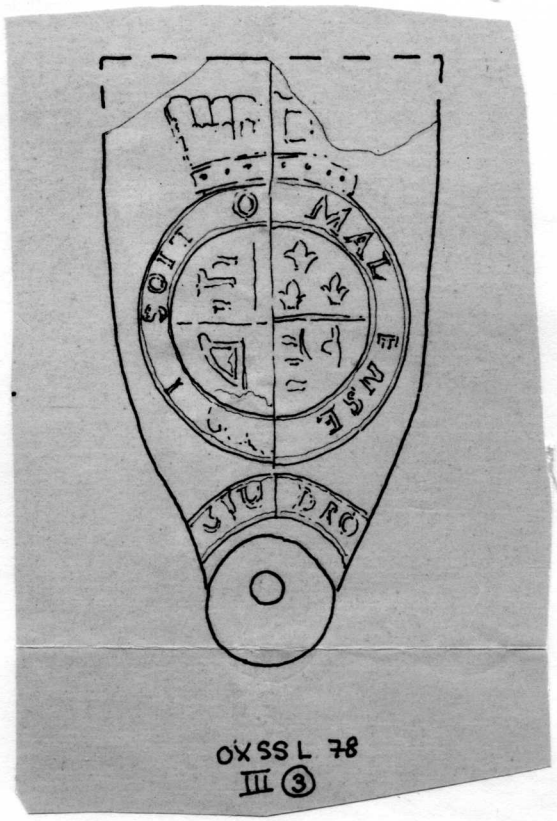
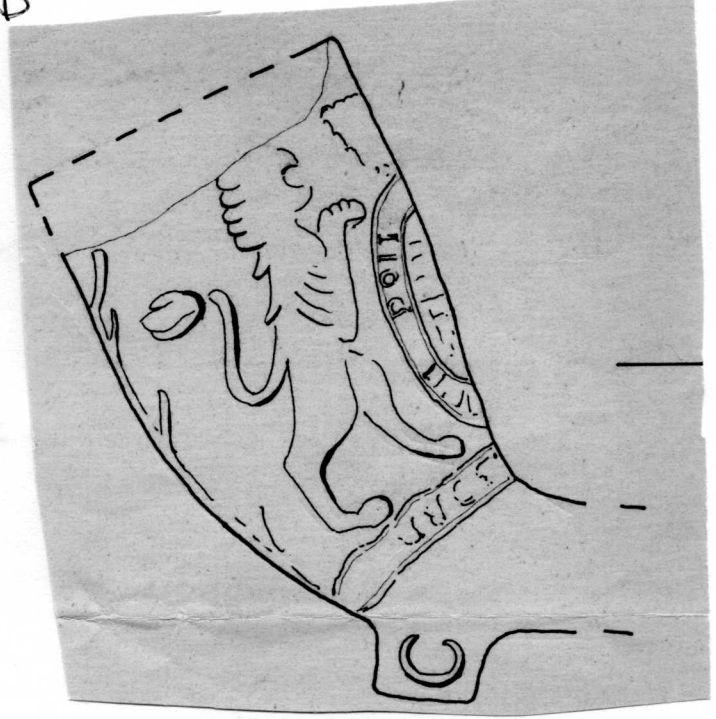
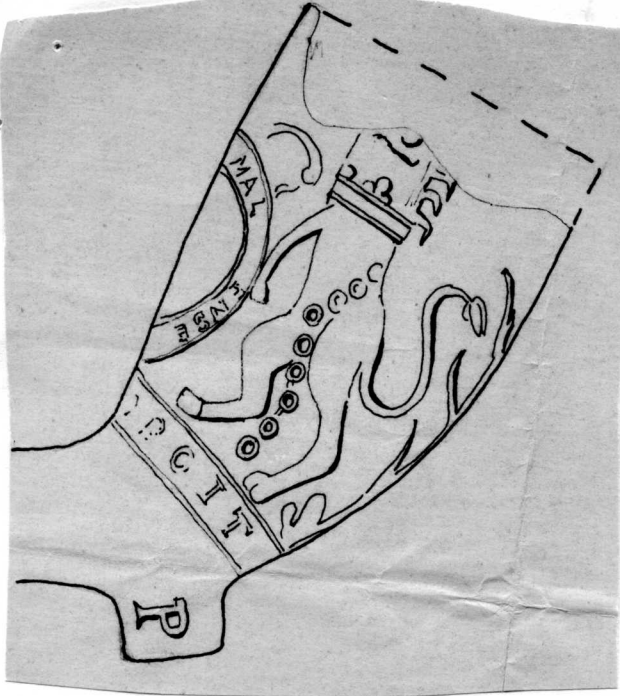
on hand
heel

5

Llanmaes
Newly Wals

City Ditch Oxford

(4) B



87 755XO
③ III

City Ditch Oxford

(5)

1. Coventry Mus. Several examples EP
c.1700-40 a-d. 1e Broseley (Atkinson Coll)
2. Type 5By. Caerleon and EP at Monmouth.
3. Charles Pears. Nottingham 1840-71. Hammond Coll
4. London. Both polished c.1630-50. Mus Lond.
5. Bermodnsey Wall, London Cheminant Coll c 1670-90.

(5)A.

6. Edward Potell ? Portsmouth c 1690-1720

a Lymington 2 examples (relief) ? Potell

b. Oyster St Kilns Portsmouth All incuse.

c. " "

7.

All Shaftesbury c 1660-80. b has a five pointed star above and below

- 7e. London Queen Hithe Bull Wharf. Tatman coll
8. ? Eli Pearce. 1766-81 Bristol

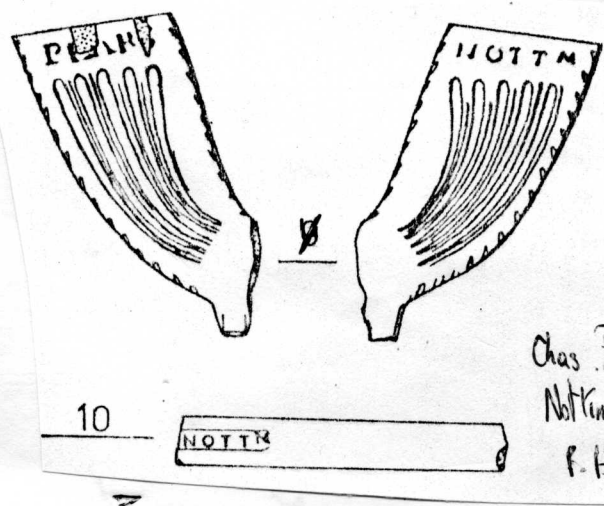
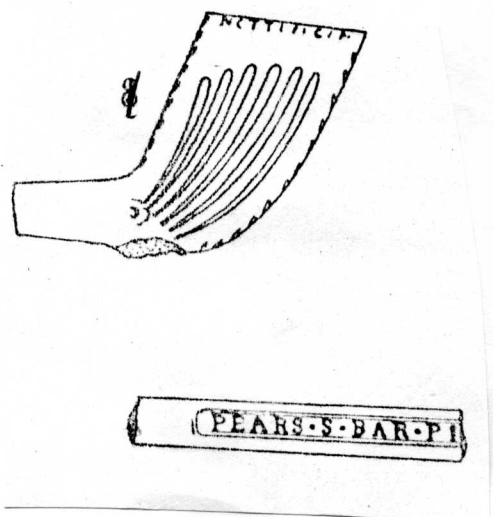
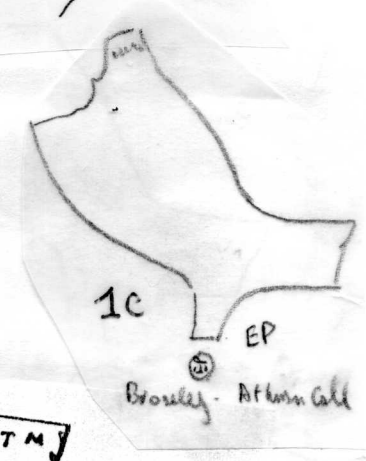
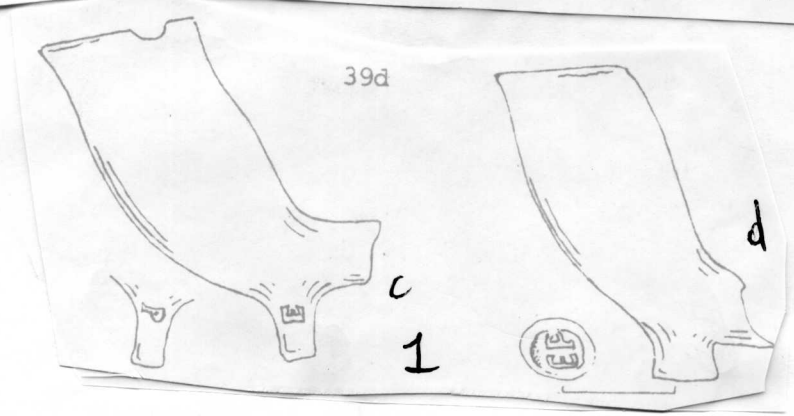
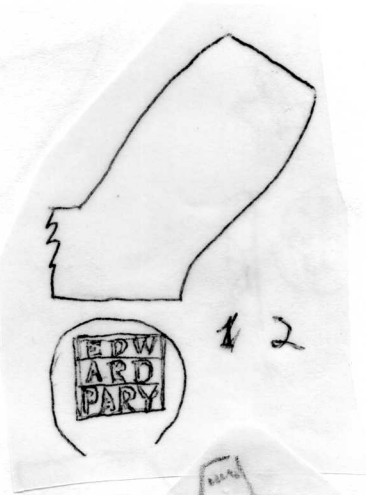
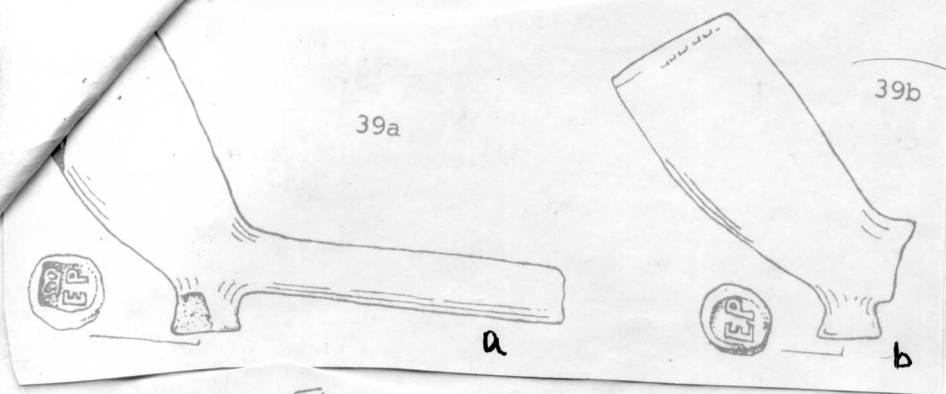
Bristol Mus(J & P 205) 5/64.

9. All Plymouth c 1690-1720. a 4 examples 3@ 6/64 1 @ 7/64.
b. 5/64.

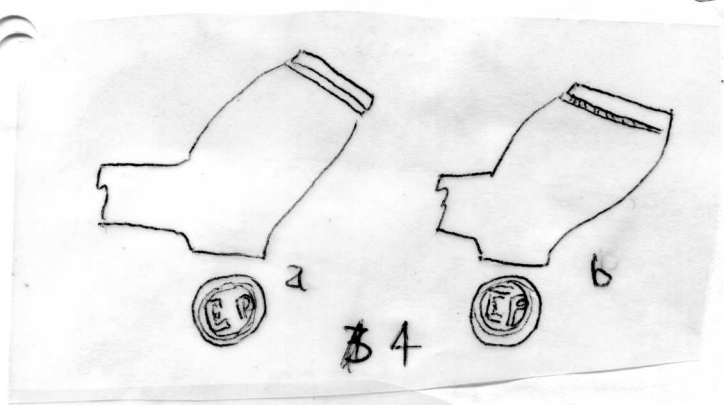
10 E.Parsons 2Efelyn St Deptford c.1850. Cheminant Coll
Also type 12G E/P Putney, Atkinson Coll.

11 Edward Pollock Manchester 1890 33 & 35 Gartside St . Hammond B.A.R.IX.

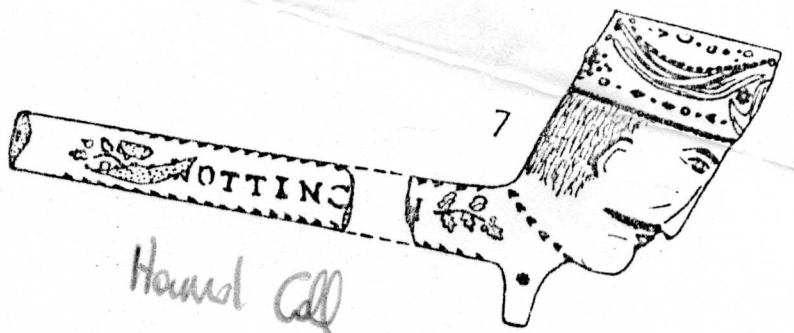
6 Bis. All Castle Cornet Beaulieu



Chas Pears
Nottingham 1840-71
F. Hammed Call

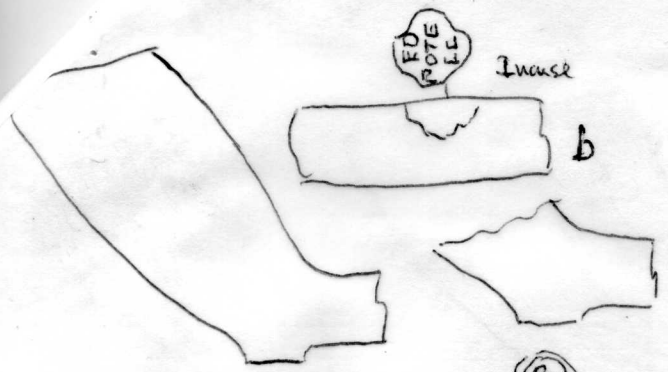


Chas Pears Call



Horned Call

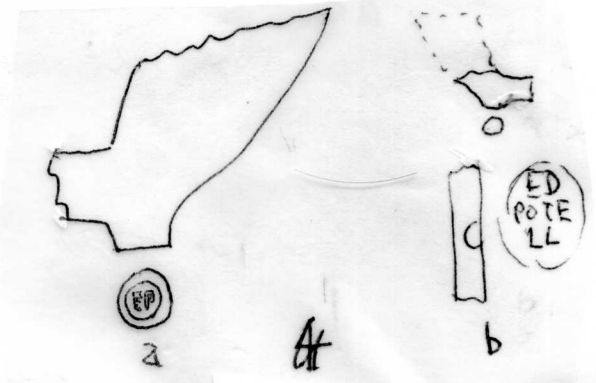
Charles Peers 1890-71.



Incase

b

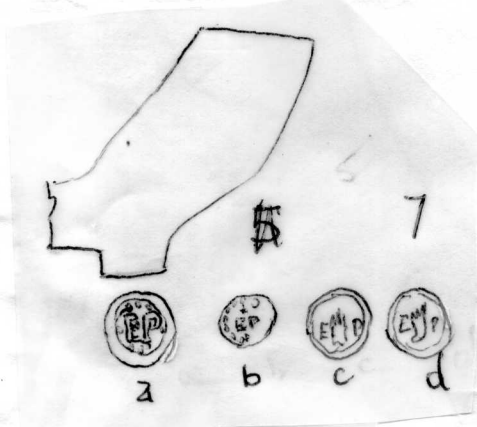
Probably Relief. Potomac For e Hall A C



a

A

b



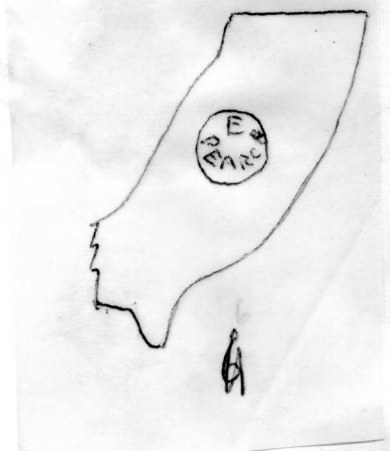
7

a

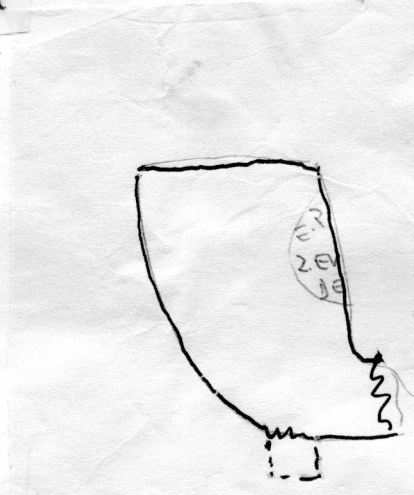
b

c

d



8



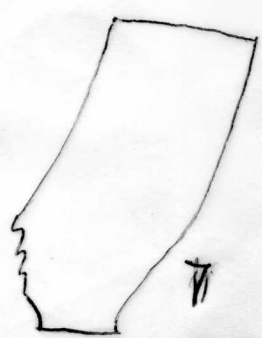
10



E. PARSONS
2 EVELYN ST.
WESTFORD.

Proo n/ls.

Chemist Coll



7

a

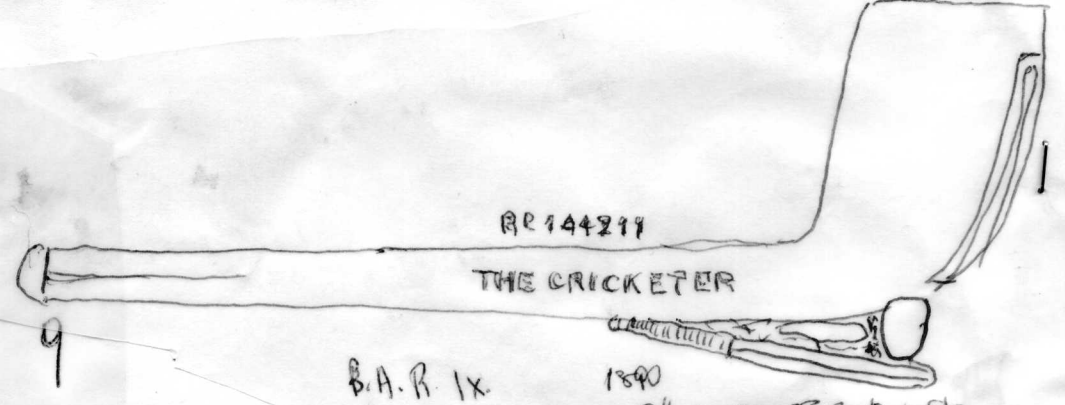
EP

EP

EP

EP

AAAAAAA



RR144211

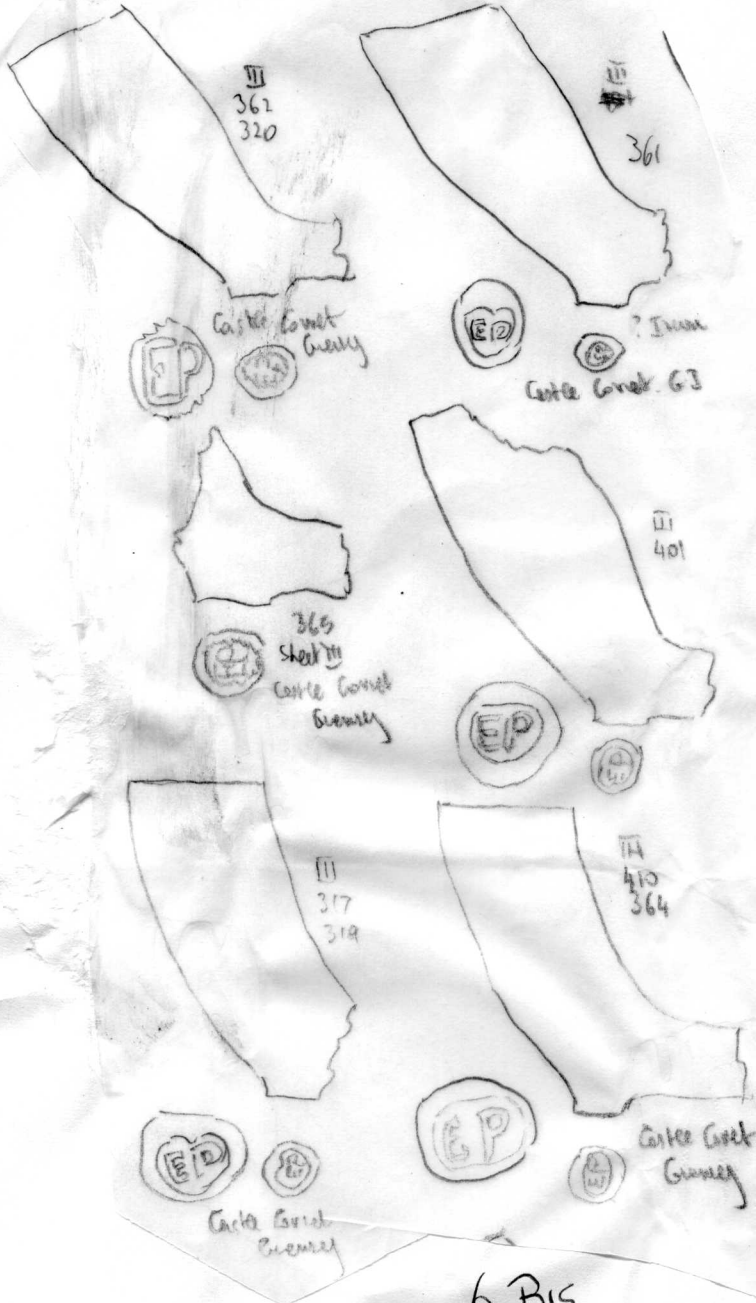
THE CRICKETER

B.A.R. IX

1890

11

Edward Pollack 33e35 Gortside St
Haverley.



6 Bis

(6)

FP

1. Belfast. Type unknown.
- 2 London Type 23. Collins Coll
- 3 F.Parnell 1908-9 Plaistow.
 - a Reg No 536890. Hammond B.A.RIX,
 - b Highworth, Wilts and another PARNELL/shamrock/PIPE back of bowliver.
(Atkinson Coll and Hammond Coll(c))
 - * d. and e Otford Dump c 1890 Asson Coll. and Crayford Dump
- 4 Winchester Mus. Garston Rd.

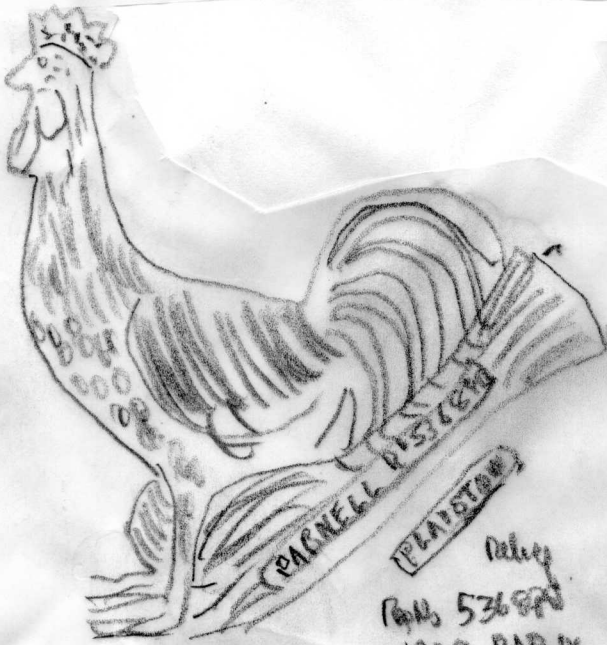
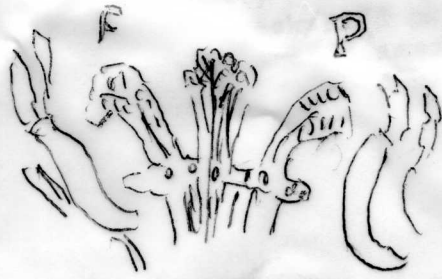
Also F/P Type 8/9 G. Thames, London. G.H.M., Green Coll
and on base F/Left hand Gauhtlet/ P. East Orchard Shaftesbury.



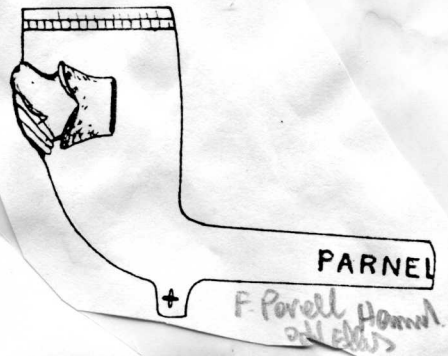
1



2

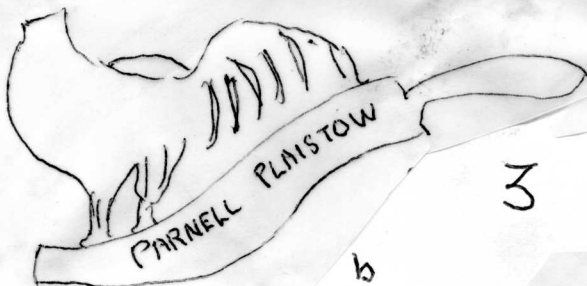


Relief
No. 53682
1909 BAR IX



a

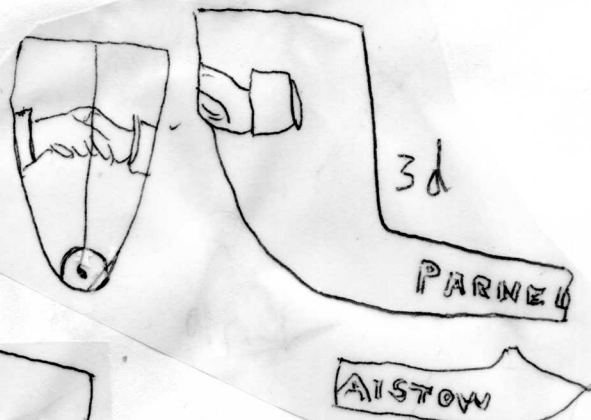
3c



4

b

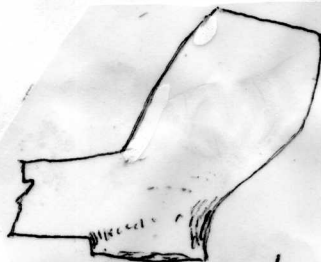
3



3d

PARNELL

AISTOV



4



3e

ARNELL
+
PLAISTOV

(7)

Stem mark incuse. George Park 1671(b)- 1706(ob) Gateshead.

1a dated 1697. Curtain Wall and Blackfriars Newcastle, Hartlepool 1976.

1b. alternative die¹ v. Edwards. B.A.R.XI

1c Moulded on spur

2 Fort St Andrew Darien. G/P castle on base. B.A.R.X

3 West Welpington . $\frac{1}{2}$ scale Arch Ael XV 1987.

4. Atherstone Warwicks, Birm. Mus.

5. George Poole. Broseley. 1696-1717 probably working 1680.

a. Type 2By. Worcester, Coalbrookdale. Castle Green, Worcester

b. Shrewsbury Mus and Thursfield (2 dies). Type 2By.

c. Thursfield. ? Type 4.

d. Type 2By. British Mus, Bousfield Coll, Coalbrookdale.

e. Type 3 By. Broseley Robinson Coll, also with small e
both lines. and GRIF POVL

f. Chester. Atkinson Coll from Church Stretton and Benthall.

h. Powder Tower, Dublin Castle.

(7)A.

4. Hammond Coll. Nottingham

a PAGE/GAINSBORO relief round rim,

b. SHERRY/GAINSB 2 GP below and ? 177

Edward Shery working c 1792-1822(ob). Page unrecorded - take over of Sherry's mould.

5. G. Priest. 1813(b) Bristol . Children b in Bristol 1847-- 1851-6 working Gloucester.

a. Warwick Factory. Canton a type name also Hammond Coll, Nottm and Guildford.

b. Warwick Factory . ? Coronation of Edward VII.

6. Brentford. Fill of Ed. Heath's Kiln. c.1740

7. Chatham High St. George Phillips c.1865-78. Chatham. From the callat of the Fountain Inn.

(7)B.

8. Probably George Powell Bristol 1704-34.

a and b Port Royal

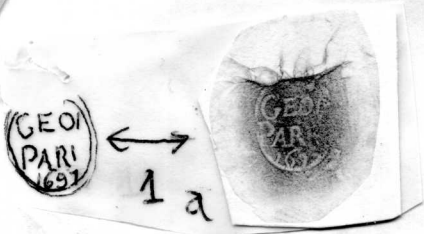
c. Bristol. (J & P 209) Presumably a relief mark.

Also G.PULLING/)ERS Town. George Pullinger 1828-77 Edgeware Rd. London

(7)

George

h. k.



1 a

1

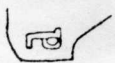


1b

1c



1a

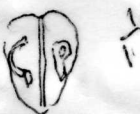


1c

1

2

Foot
St Andrew
Damen



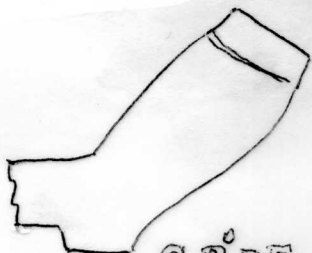
W Welfahrt
AAKV. 1657

3



4

4



GRFE



a

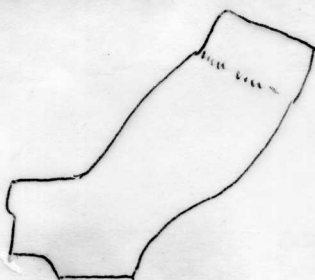
= OVEL



b



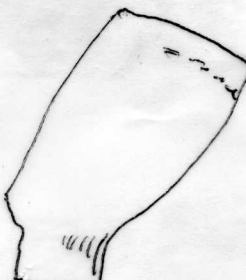
c



d



Roole PD
Montgomery



e

5



F

Auster -
Mc Patten

SI

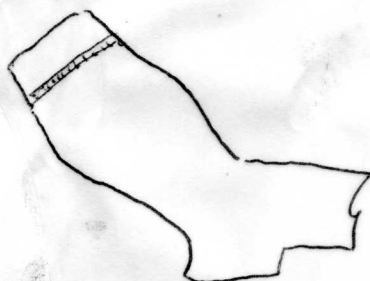


GRPF
POVE
Chuch Strotha
v Butball

Alton Call

9

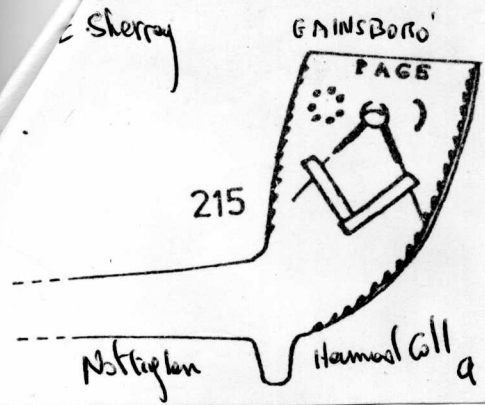
5



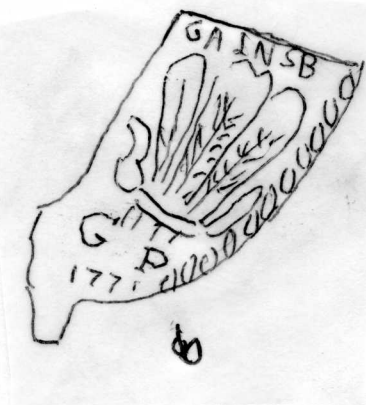
2:1
Polo

Powder Tower
Dublin Castle

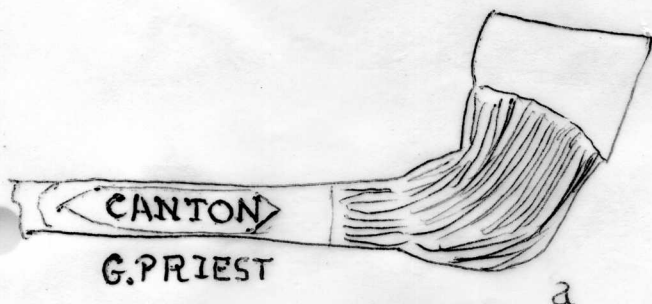
h



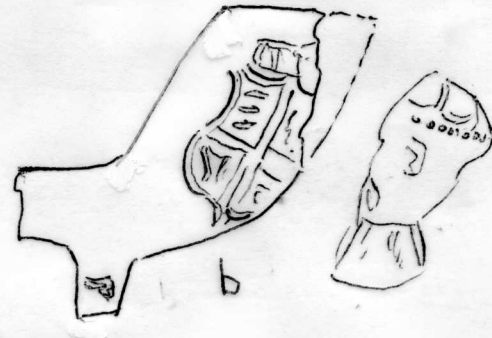
4



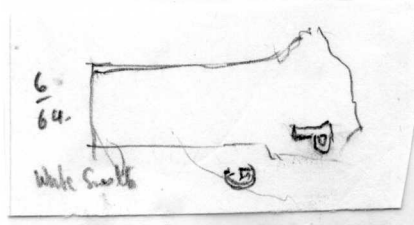
6



a

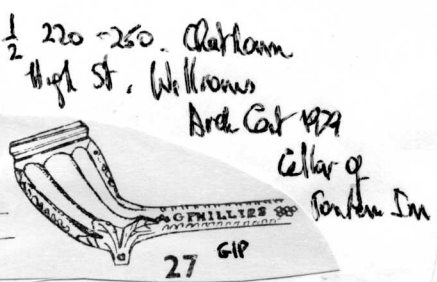
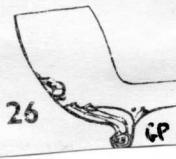
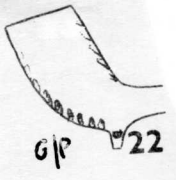


4 5



6

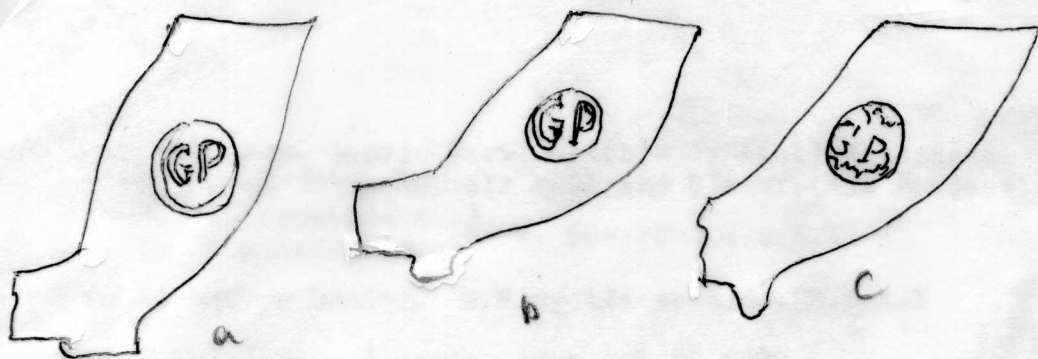
Bristol Kilm Fill



7

Geo Plan Maps & Dates

(7)B



58

... 254, Nor. water, Coalbrook etc. Carter Green.
 ... 254, Nor. water, Coalbrook etc. Carter Green.
 ... 254, Nor. water, Coalbrook etc. Carter Green.

... 254, Nor. water, Coalbrook etc. Carter Green.

... 254, Nor. water, Coalbrook etc. Carter Green.

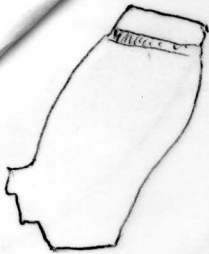
(7)B

... 254, Nor. water, Coalbrook etc. Carter Green.

... 254, Nor. water, Coalbrook etc. Carter Green.

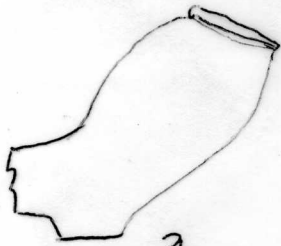
... 254, Nor. water, Coalbrook etc. Carter Green.

... 254, Nor. water, Coalbrook etc. Carter Green.

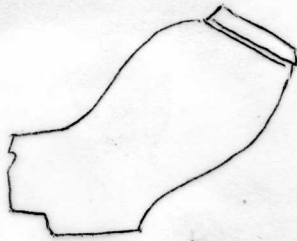


HP HP

1

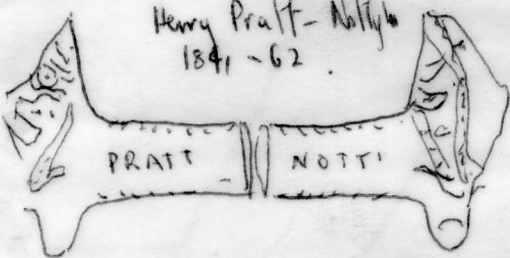


a



b

2



Henry Pratt - Nottly
1841 - 62

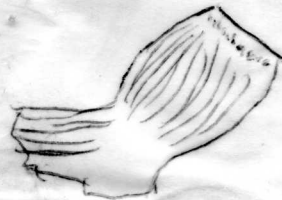
PRATT

NOTTI

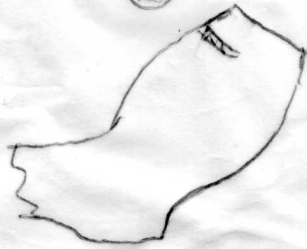
TTS BAR-PIPE

TTS ALBERT

3



2e



2d

POWELL

WESTER ST WESTER.

stem t27 peddled. Westminster

H/P spurs.

No doubt Henry Powell

Queenshill
Cross with Call

Also
Atkinson Gll

4

H. PHIL (LIPS?)

(AS) H FORI

Kent / Sussex coat arms
basal

London - t 33

Clement Gll

5

(8A)



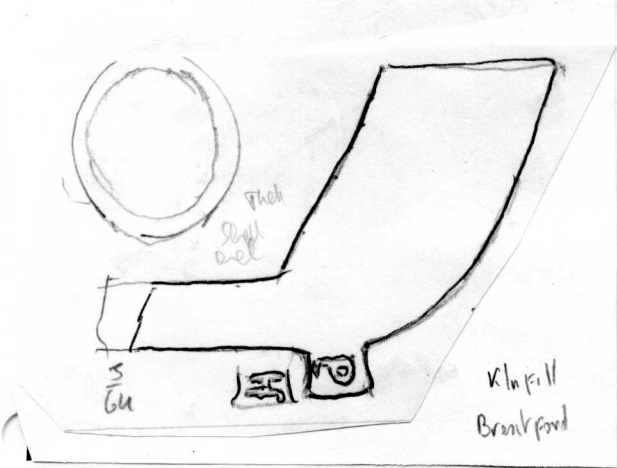
6

HP

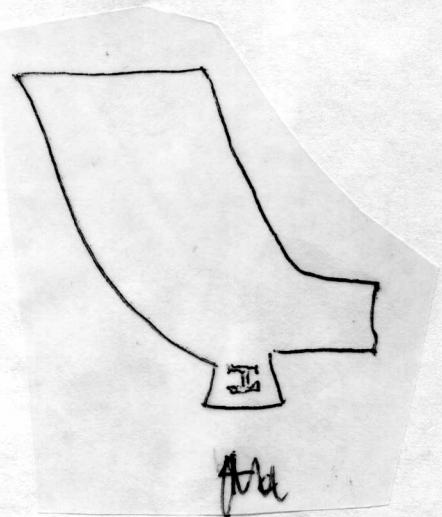
(2)



- Woodcock Dock yard also



6



HP

9

Handwritten notes at the bottom of the page, including 'HP', '9', and some illegible text.

(8) B

Wm 1412
No 2



and Bel



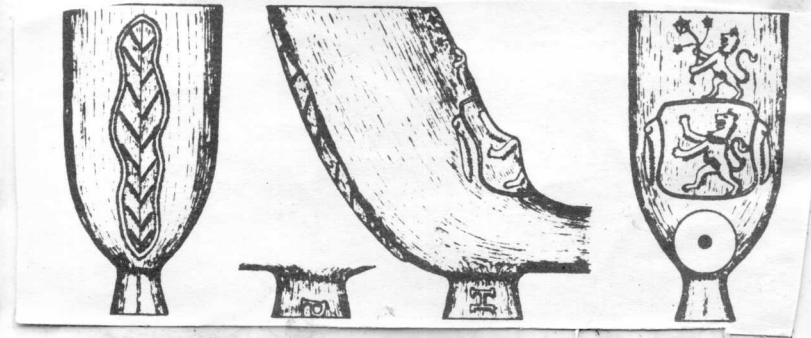
Sashed Brestford Kh
fill

e



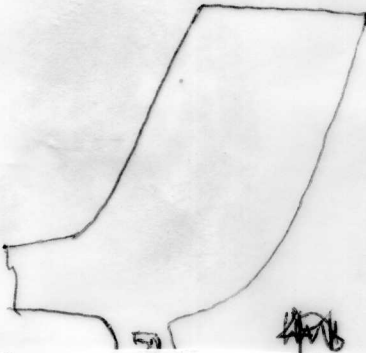
At 30

F



A

a



F

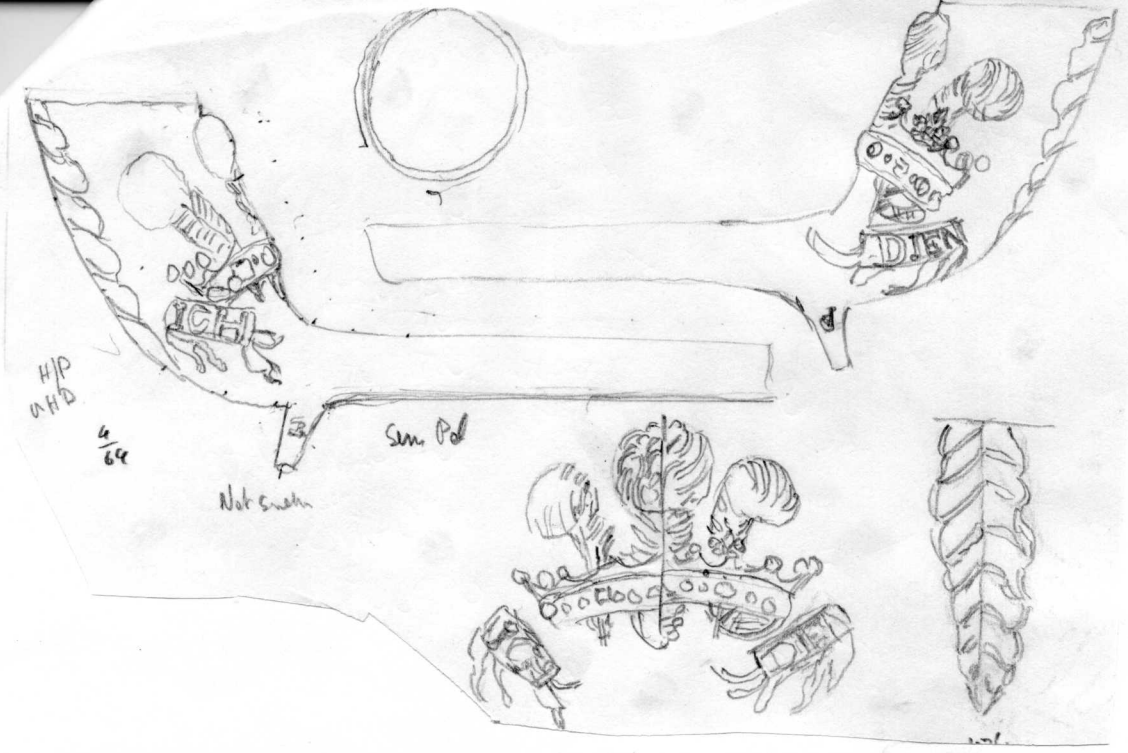
6



9

Brestford Exc.
H/P - Lion Brestford
and Lion can
holding on wax

C/M 11

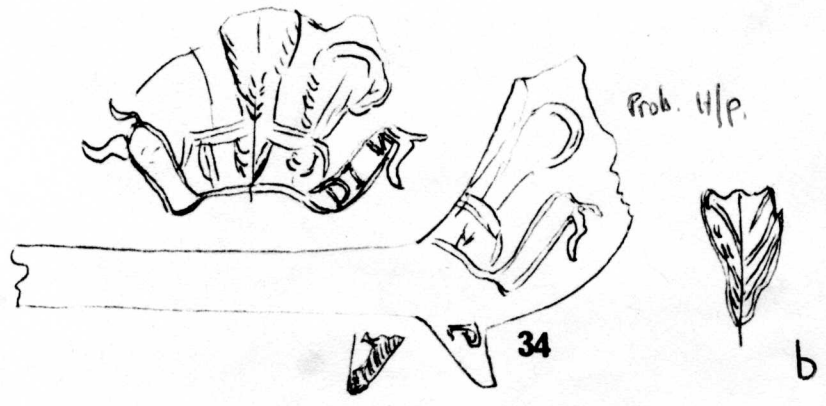
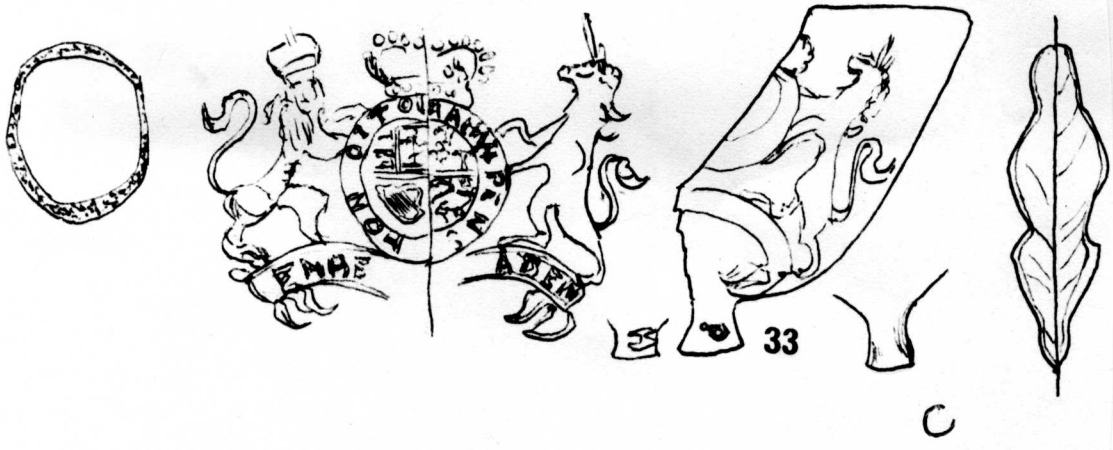


Brentford Kiln Fill



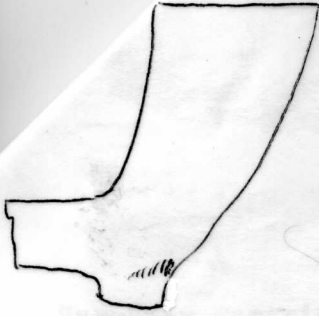
a

7

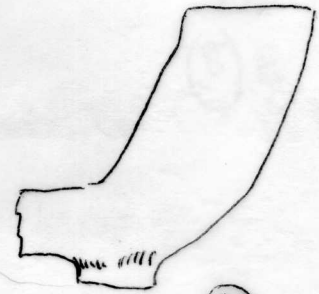


Brentford Exc.

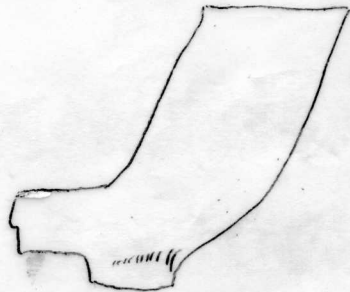
(8) 1



HP a



HP b HP d

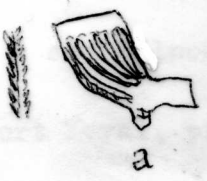


HP c B



d

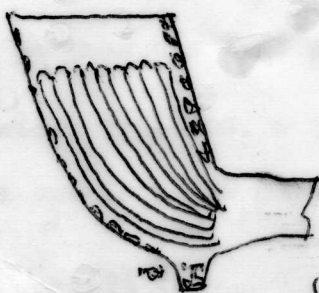
Bristol City Mus 7/8
A. Bristol (1) B. B.
L. Maine Coast



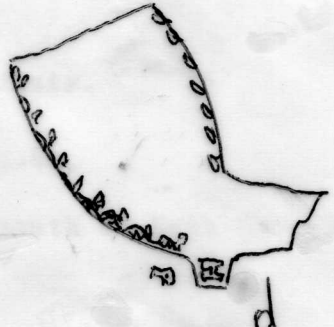
a



b

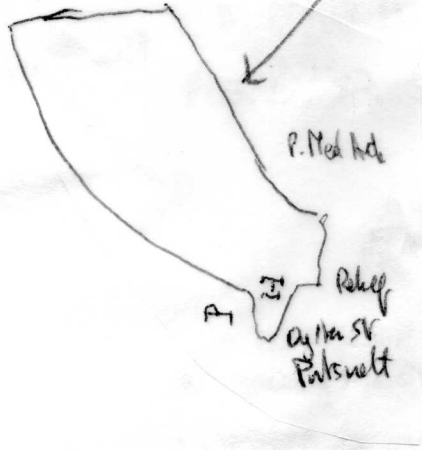


c



d

Partsmouth - Hall Coll



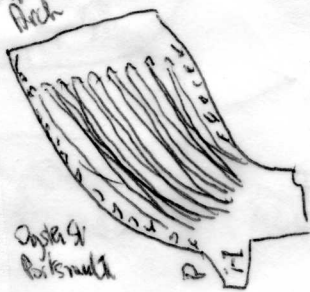
P. Med hde

P

Relief
Copper SR
Partsmouth

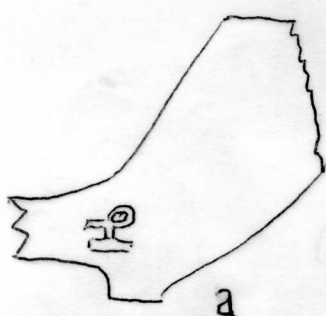
~~9~~ 9

P. Med hde



Copper SR
Partsmouth

9e



a



b

10

HP.

(8) E

11

Humphrey Partridge 1650-54(ob) Bristol

- a British Mus, Pritchard Coll
- b Bristol, (J & P)
- c. Bristol City Mus, 7/64
- d. Bristol (J & P)
- f. Blaize Castle Mus, Bristol 8/64.
- e Bristol (J & P)

c and f look post 1650, perhaps his last products.

12 Port Royal, probably oversize. Type 10G. c 1720-40.

Also HENRY PUTLEY from a castle a few miles south of Bath (Sen(N and Q 280.10 1855))

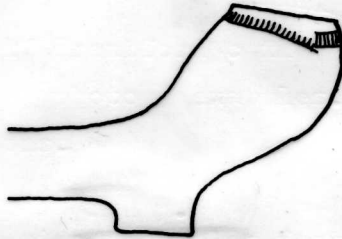
HEN/RY. PUT/LEY in: M. Lowam Bath. fleur de lis over.

FLEUR-DE-LIS (HENRY PUTLEY) TYPE 1
NORTON ST PHILIP, SOMERSET

13



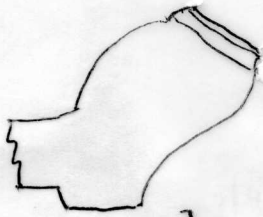
IN RELIEF
(INC BORDER RING)



MSJ

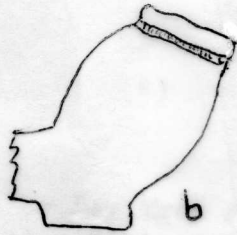
NUMBER OF EXAMPLES TO DATE: 8 (ALL FROM BATH)

(8)E



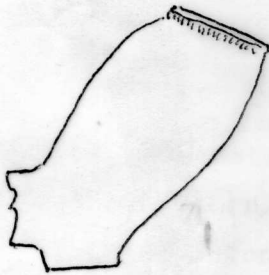
a

HP



b

HP

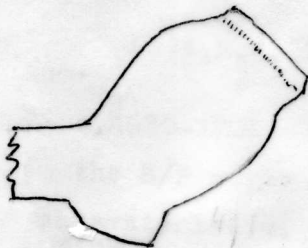


HP

c

HP

d



HP

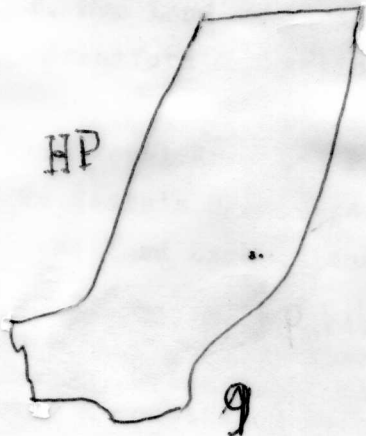
e

HP

f

11

~~11~~



HP

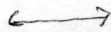
9

12

~~12~~

13

HEN
RYPV
TLY

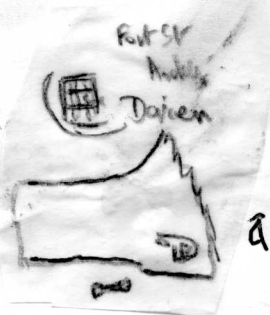


HPN
RYPV
TLY

Base II examples (the two.)
Batter per M. Lewcom

HPN
RYPV
TLY

Forfeign
Hungerford
Castle



Newsletter 3

John/Joes Patison
Stirling 1685

Stirling Castle BARR

1

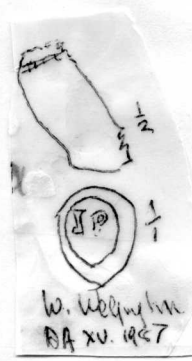
a

2:1

b



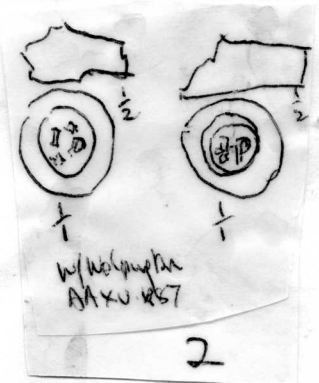
a



W. Welford
BA XV 1927

2

b



W. Welford
BA XV 1927

2

John Pattison

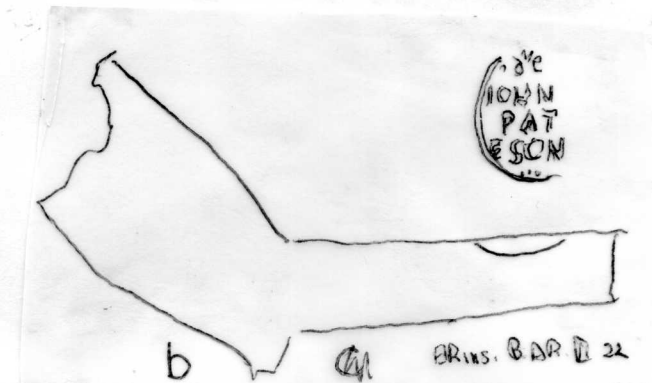


a



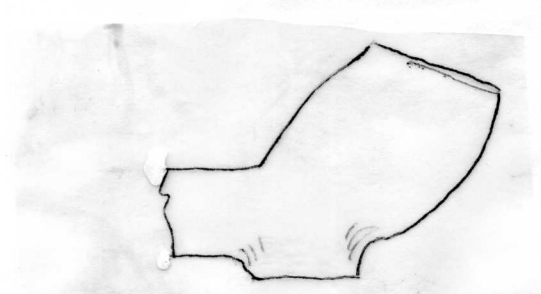
L. Fisher

3

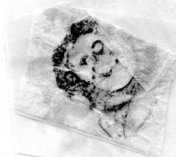


b

BRINS. BAR II 22

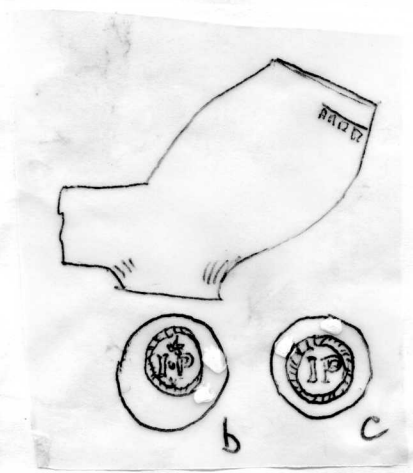


4



a

3



b



c

9

PRINCE CARLISE

Incase

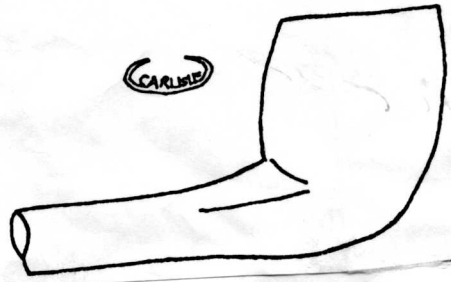
PRINCE CARLISE

Prineta
Carlisle

2 Pnyk 1856(d) Cocherault

5

CARLISE



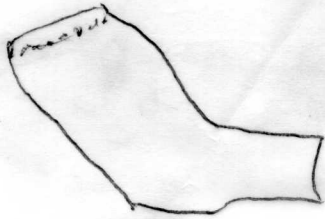
PAWSON
CAMB

PAWSON
CAMB

Chy Prayon Hare 1 Camb

5

(9) A.



a

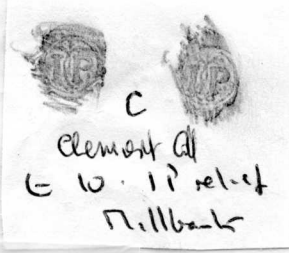


Cambridge
George and Dragon
Examples.



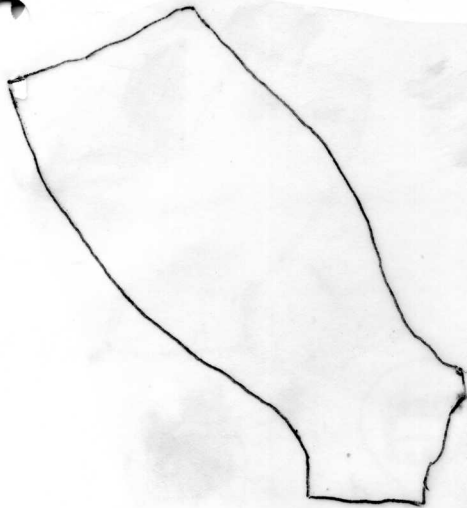
Cambridge
George & Dragon

b



c
element of
c 10. 11. 12. 13.
Millbank

6



a



b



7



d



e

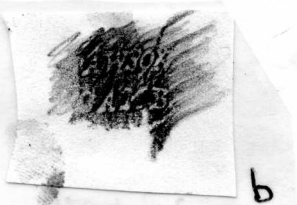
Dry Drayton Manor 1 Camb.



f

PAWSON
CAMB

a



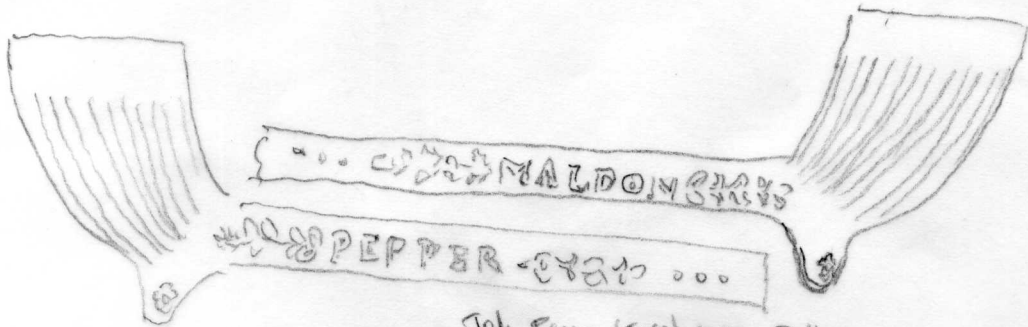
b



c

6a

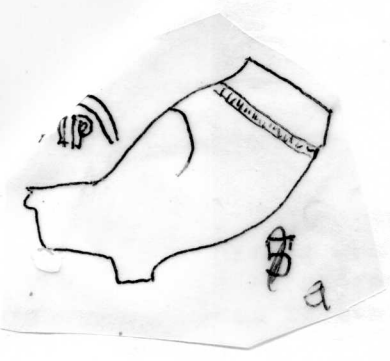
8



Maldon

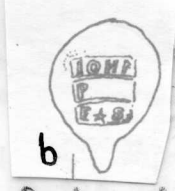
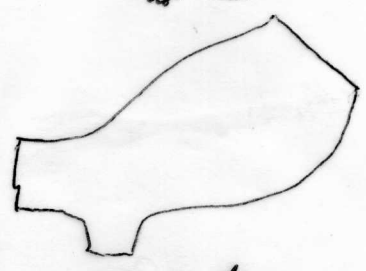
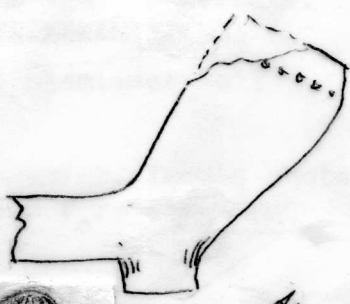
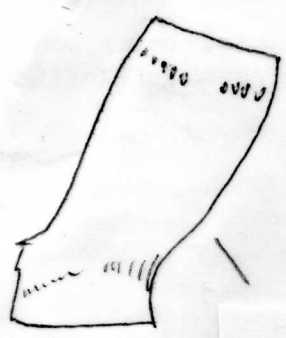


Sole Peper. (Tms) 1530. Polts.
Maldon



St Elphens
Rackery, Warrington
type on \$ a. b

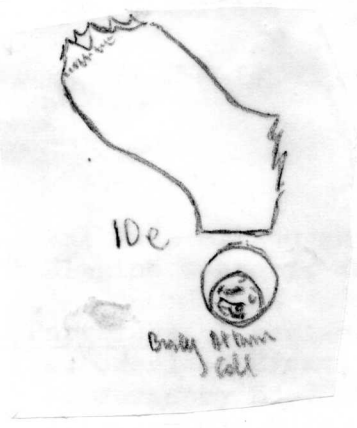
9



Crabby Nur(M)

10

d



10e

Crabby Nur(M)
Coll

IP

(9)C1

Pipes from the Coventry area- Probable maker John Pettifer, Coventry c.1685-1716

Dies marked a-T.

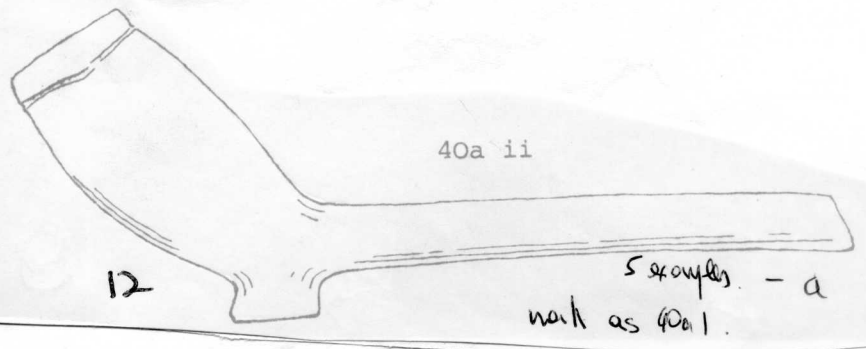
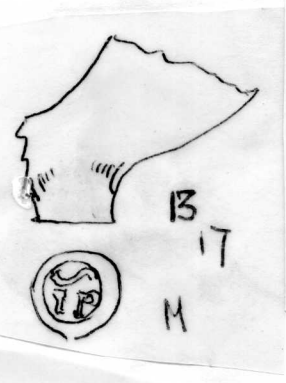
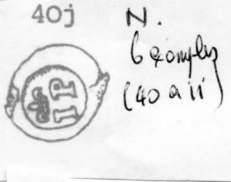
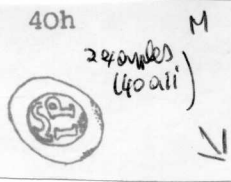
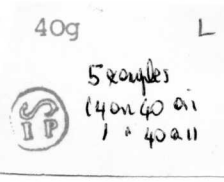
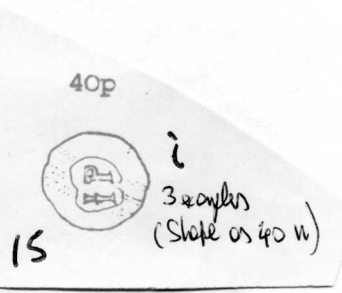
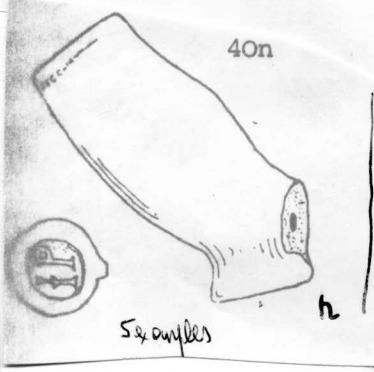
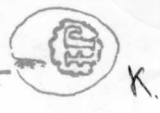
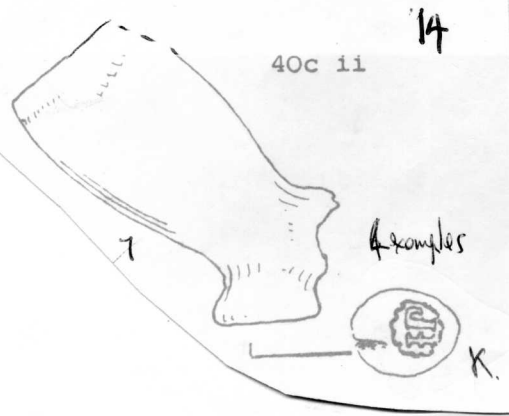
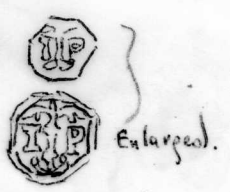
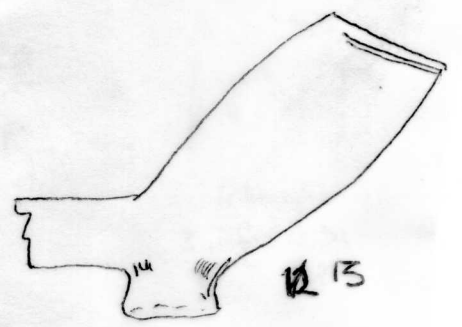
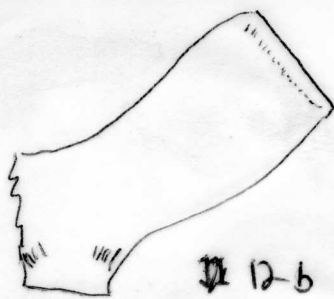
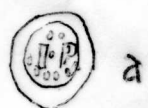
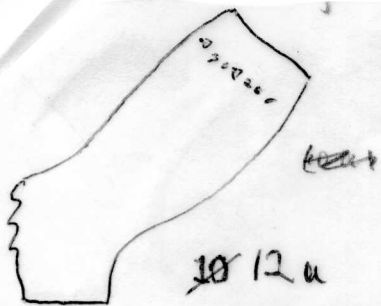
12. Blakesley Hall, Birmingham

- die a. Blakesley Hall, and Coventry Mus(5)examples (40.a.2)
b. Coventry Mus, 4 examples perhaps the same die as 14.K.
c. " " 3 "
d. " " perhaps the same die as P
12b g. Pickeringd House, Mancetter, Warwicks
f. Coventry Mus 8. examples.
e. " " 6 "
h, " @ 5 " perhaps the same as 40n
13. Badby excavations Northants. 7 examples Coventry Mus.
14, k. Coventry M s 4 examples perhaps the same as b.
15: " 5 "
16: Die L, 5 examples on 22(40 a 1) Coventry Mus. 20B perhaps same
type from Stratford.
Die M 2 examples on type 12. Coventry Mus.
Die N 6 examples " " one on type 20B from Tamworth.
17. Badby excavations Die M.
18 Die as k. Broseley type 5 base.

(9)C2.

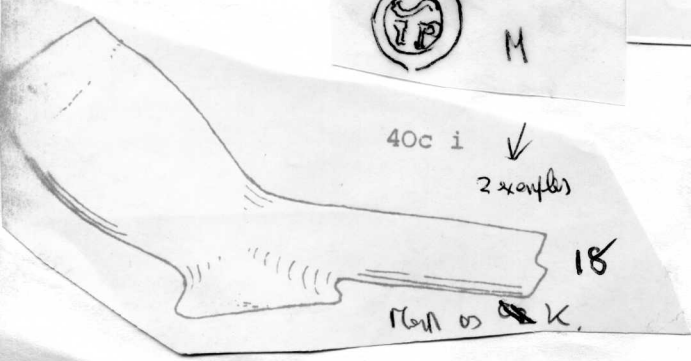
19. Coventry Mus Die O 7 examples also 12 examples with die M.
20 (40b) Coventry Mus, 7 examples probably die a.
B. Die L Stratford. see 14 above
also die N.
21 (40m) Coventry Mus Die P (possibly same as d) 7 examples. of type
3 die e 3 die m.
B. Dies q and D Coventry Mus.
22 Coventry Mus. Die S 4 examples
23. " " Minature pipe die a.
24 All Temple Balsall closing date 1740 Dies M ?d T and R.

Also ~~IP~~ ^{IP} at Polesworth with pipe makers & sappers (see Mrs Gooden)



12

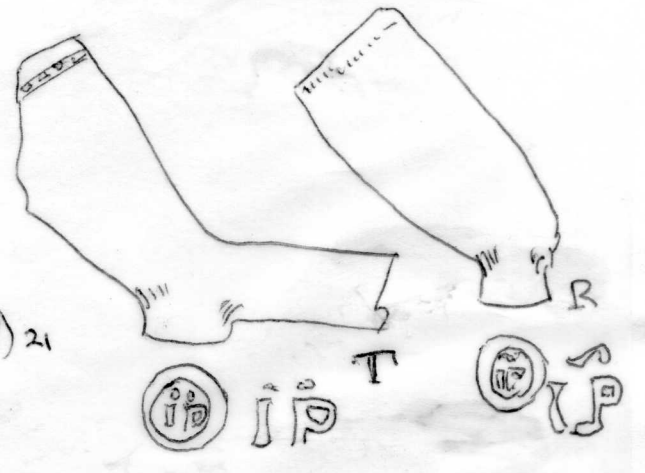
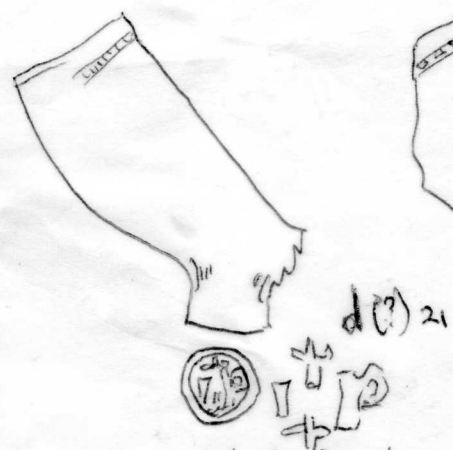
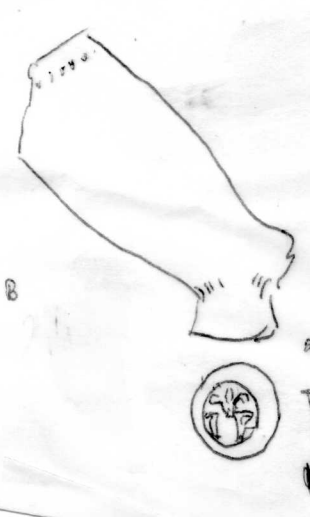
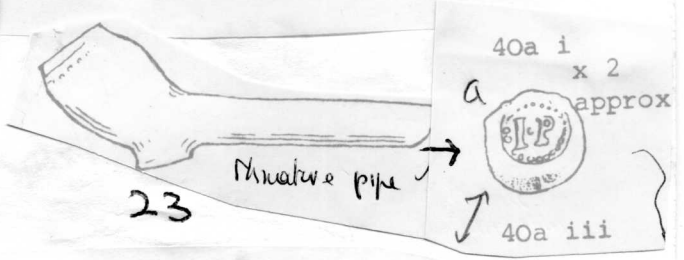
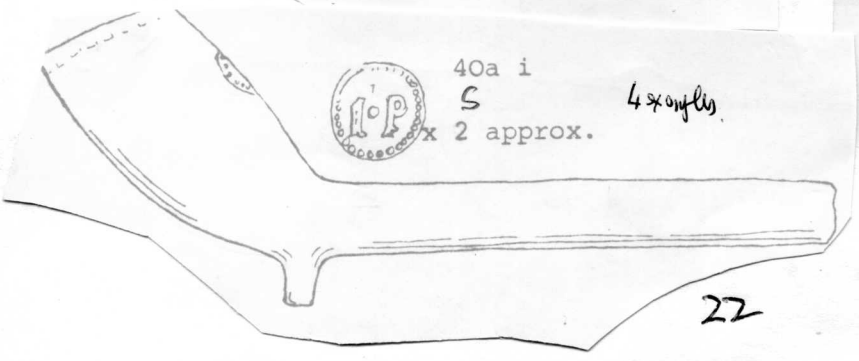
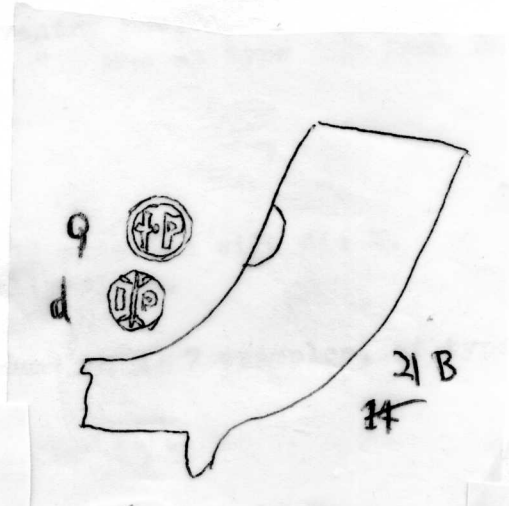
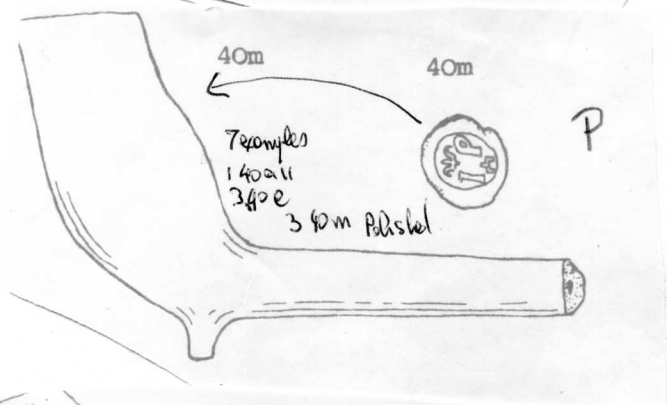
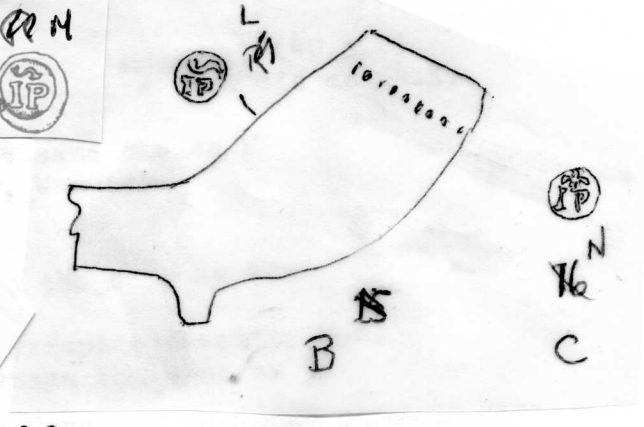
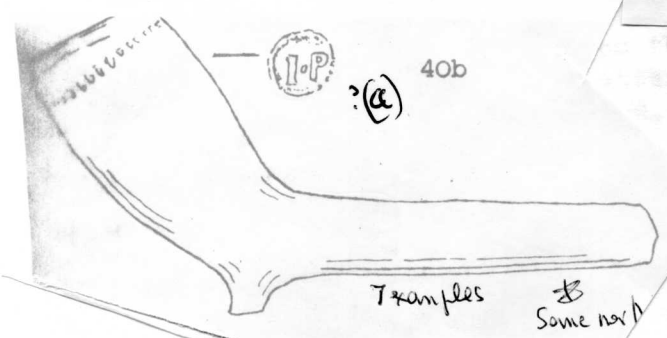
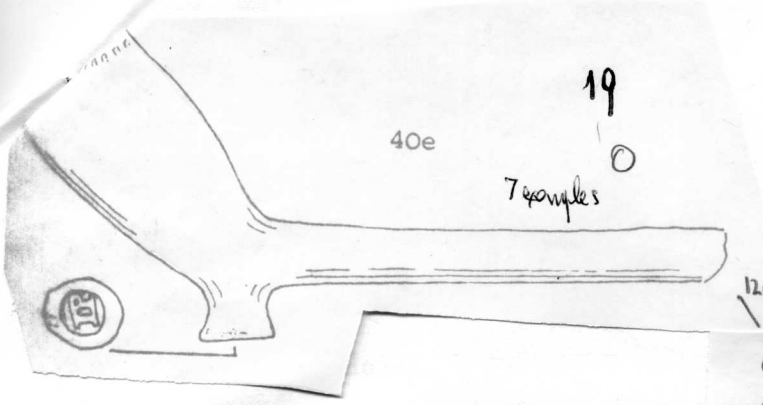
5 examples - a mark as 40a i.



40c i 2 examples

18 of 18

16



Temple Balsoll Fixations
(see Reports folder)

John Pettigar Gweaty c1885-1876

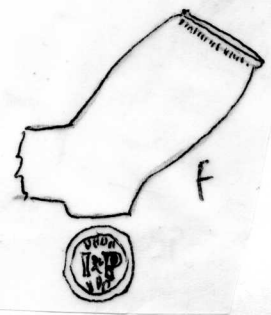
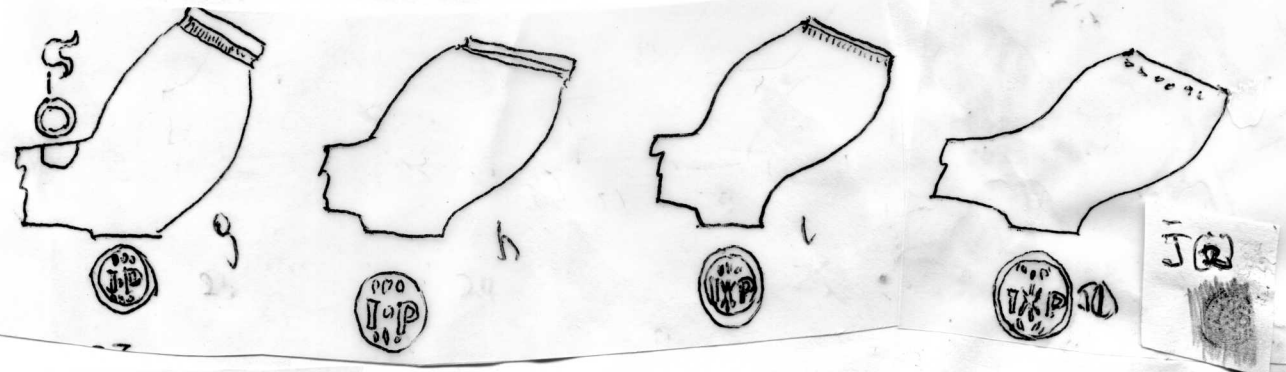
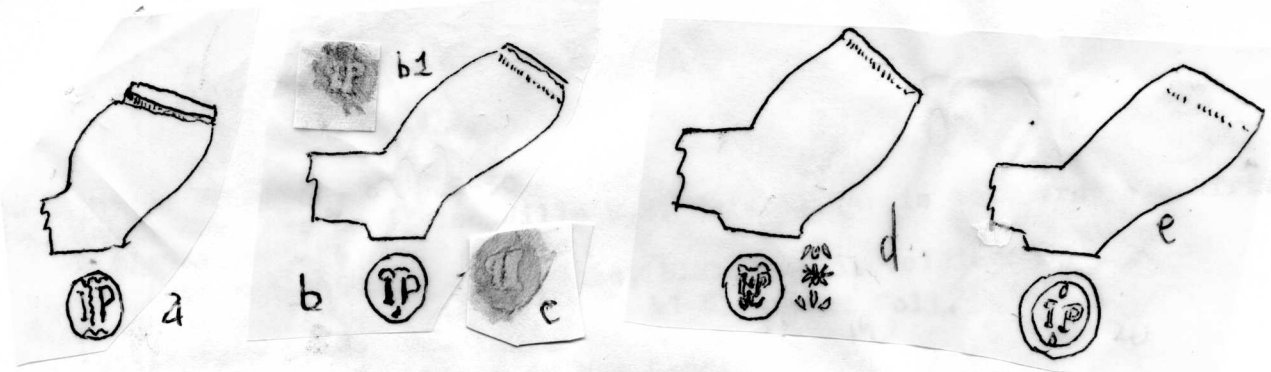
IP

(9)D.

26 London maker or makers c 1620-50

- a. Southwark, Mus Lond also Wills Mus, Bristol(Harris Coll from Blackfriars. Polished 1600-30
- b. Mus Lond and rubbing, Queenhithe, Elkins Coll. (c) 1600-30
- d. Mus Lond polished. 1620-40 b1 Cheminant Coll.
- e. Bucklesbury House, Mus Lond.
- f. Plymouth, 7/64 also black in Mus Lond.
- g. Black with stem mark Mus Lond 1630-50
- h. British Mus, Bragge Coll.
- i. Mus Lond.
- j(1) " j(2) Cheminat Coll, Queenhithe.
- k. George and Dragon Cambridge and Bermondsey excavations.
- l. Probaly same type as k. Queenhithe Cheminant coll, relief.

Marks a-c incuse. Remainder relief.

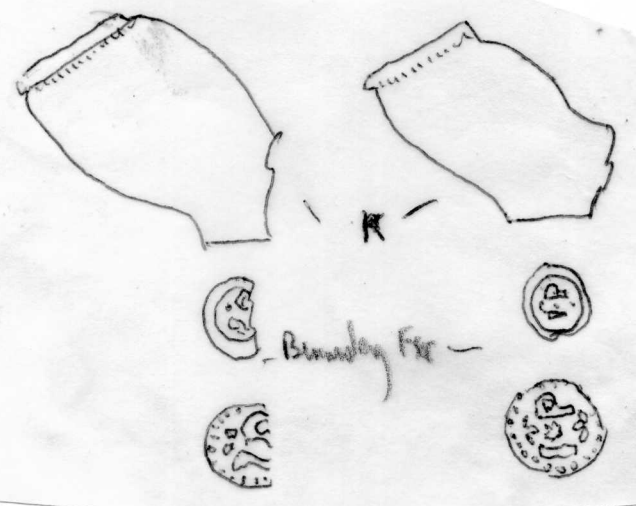


TOWER BRIDGE.

RELIEF.

S.B.O. 3.3 MM.

M. Tatman Cell



IP

(9)E

27. Types 8 and 9G.

- a. Mercers Hall, London G.H.M.
- b. Queenhithe, Atkinson Coll. Also with mark as a G.H.M.
- c. Queenhithe, Atkinson Coll. British Mus, Bragge Coll. Thames, G.H.M.,
- d. Queenhithe. Elkins Coll. Westminster, (Tatman Coll) Green Coll.

28.

- a. Type 10G. British Mus, Bragge Coll. London, Barton Coll. c1700-30. *Waduck Delyon*
- b. Type 10/11G. Thames, Cuming Mus. c.1730-60. *Cheminant Coll. City.*
- c. Type 12G Bedford Sq, Le Faye Coll. 1780-85.
- d. Type 12G. London Atkinson Coll and on Type 10G from Bankside, Thames G.H.M., Green Coll. Reading and also Type 11 several examples.

29.

Arms of Hanover

- a. I/P .Putney, c1770-90, Atkinson Coll. Battersea with twirly plant leaves on front mould, Atkinson Coll.
- b. London, Atkinson Coll. "
- c Queenhithe . Cheminant Coll
- d Pauls Pier Wharf (Cheminant Coll)

(9)F

30 Joseph Pratt. 1828 Shadwell

London. Atkinson Coll.

31. John Payne 1800-11. London

Thames. Cheminant Coll. PAYNE back of bowl I/P on spur.

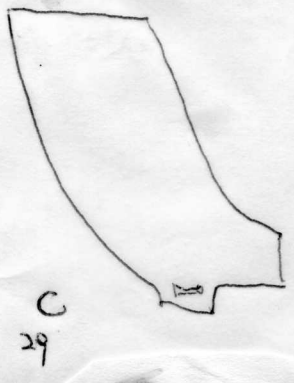
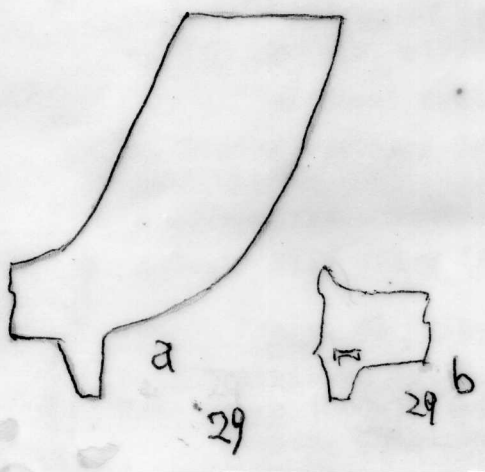
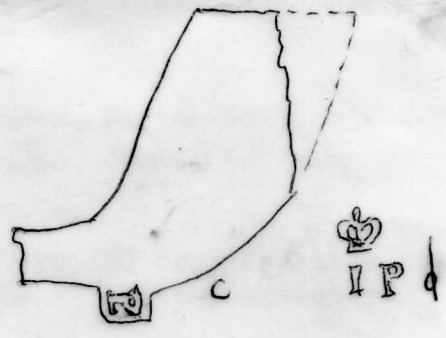
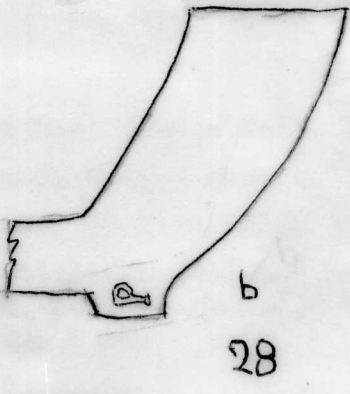
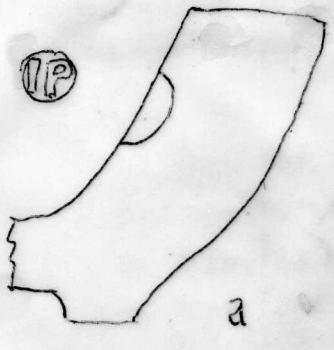
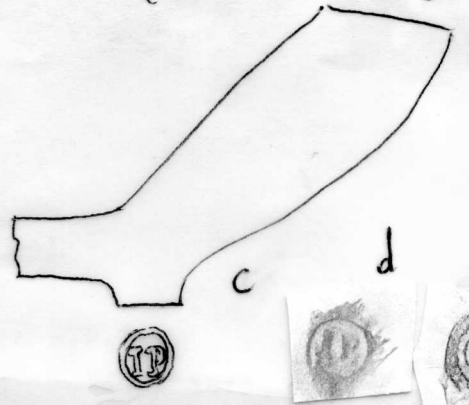
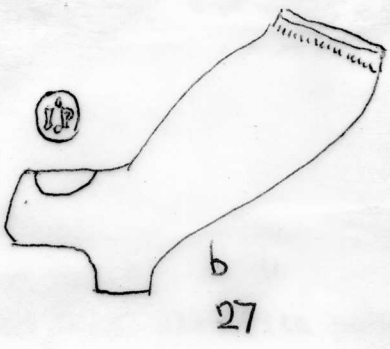
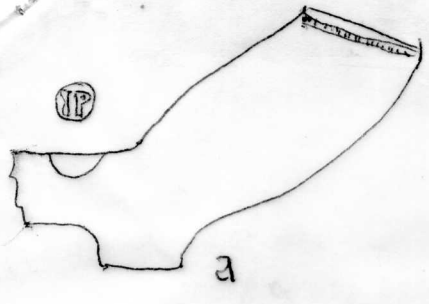
- a. IP/IP on spur. Type as b. Lambeth Bridge, Cheminant Coll.
- b. I/P Thames Foreshore. Cheminant coll
- c London Tatman Coll

ALSO IP/IP Type 13G. Kenwood and Putney with P.O.WF. Atkinson Coll,
I/P Types 9 and 11G. Chiswick Eyott. Type 13G, Dwight's Fulham Pottery
Gunnorsbury Park Mus and Chichester. *Stapley. 1*
Type 14/15 G. Chiswick, Gunnorsbury Prk Mus. Mould line left 1830-60.

33 James Pitt 1805-11 D.

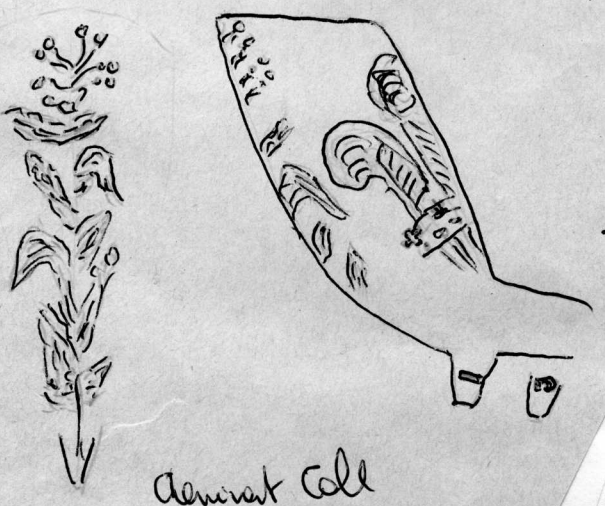
- b PITT/RICHMOND. Stem relief, Isleworth, Cheminant coll also Ewell.
- a All Kew Sewage works, Randle Coll. A pipe marked PITT at Leicester

(9) E (11)



Quatre Angles

Foot



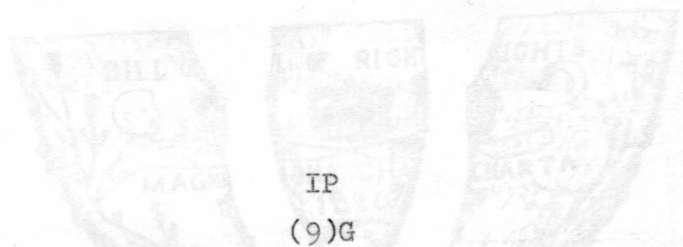
General Call See No 29.

Usual
Unicorn
+ Hammer
Anvil



Pauls Pier





34.

a. Battersea Park. Atkinson Coll. Xerox drawing by I. Mortimer (v. A and O, London P. pes Fig. 12. No. 4) Enlarged drawing 2:1 by A.O. 1810 records Admiral Cochran's campaign against naval abuses. *Tatman Coll*

35.

Also Tatman Coll but with Burdett instead of Corfu. He was released from the Tower in 1810.

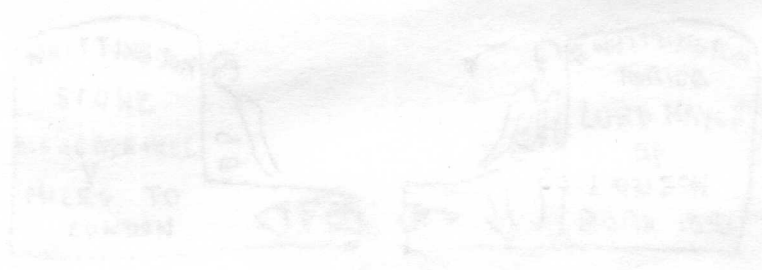
. Whittington Commorative pipe.

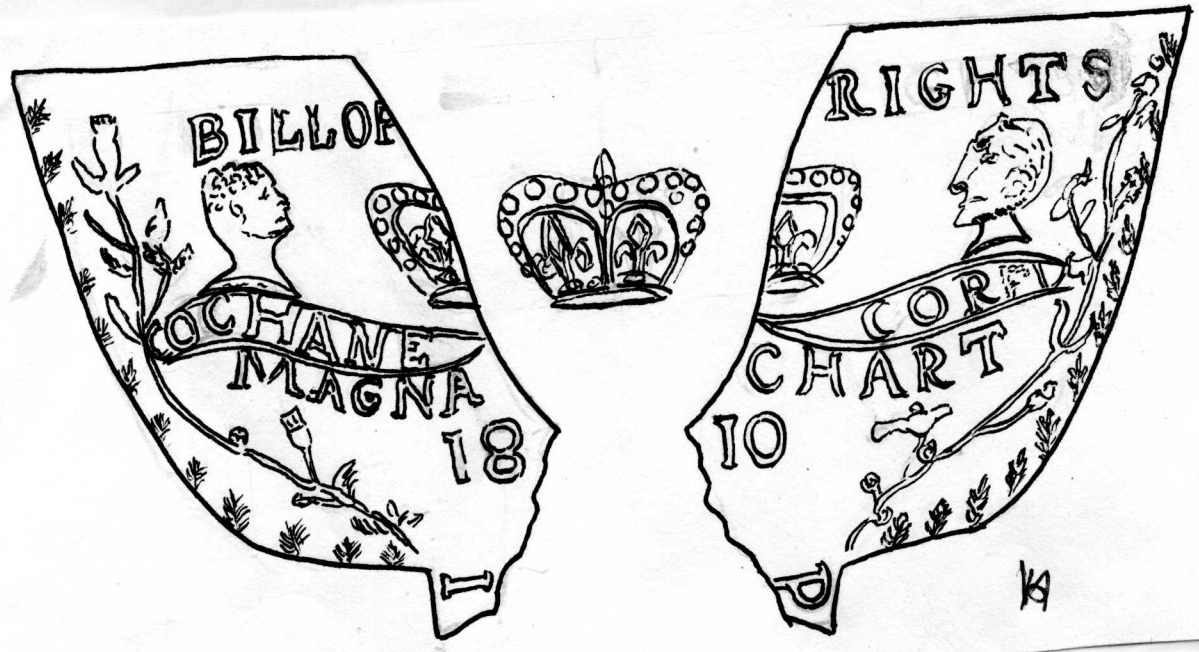
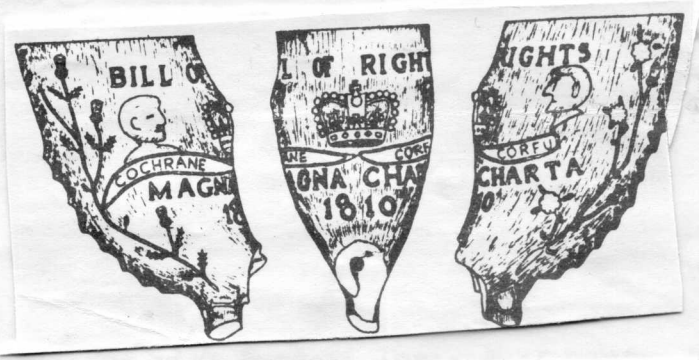
a. Otford Dump, Kent. Whittington and Cat. 5 miles to London.

b. Cheminant Coll. 4 miles to London. John Palmer, Proprietor.

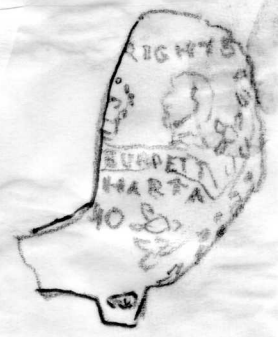
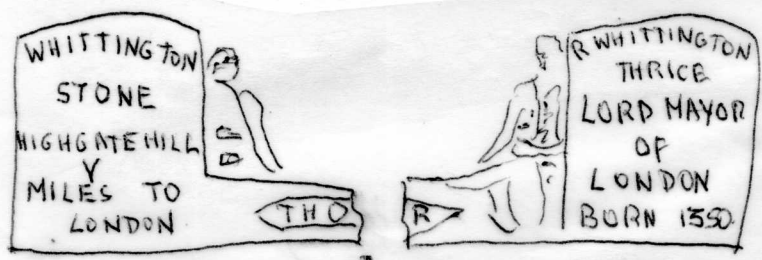
also Highworth Wilts 10 miles to London,
and Scunthorpe Mus, and G.H.M (Palmer).

Stem name presumably that of the business supplied.





30a 34



As 34 above but Burdett instead of Cochrane
Burdette release from the tower in 1810
Tatner coll
B.A.R.I.R. 69.



TYPE 1

IP, incuse on stem (letters stand out in relief)

Nº of examples as of 20/6/85: 18

17 from Lower Common site, 1970-1985

1 from Orange Grove excavn 1979

From mould of pipes stamped
IAM/EPOE/+G+, as shown.

see 42.

? Glosbury

TYPE 2

IP incuse on stem

Nº of examples: 1

From Lower Common site, 19/6/85

Reference: L5118

1847 Chatham. 1851 Ashford. (9) H

36. J/PHILLIPS/ASHFORD. Cheminant Coll, S.E.England. Incuse also from Capel Surrey.

37 All from Surey. v. B.A.R.VI

- a. Reigate c. No 26.(9)D. c 1650-60.
- b. Newdigate
- c. Ewell and Kingston
- d. Dorking STEPNEY on rim of bowl

38. Probably John Pain 1733(m). Petworth Sussex.

- c Steyning. Also a Royal Arms from Battle Abbey attributed by Atkinson
- a, Steyning, b Steyning and Kingston d Tangmere and Pulborough all considered by Atkinson to be by James Pitt 1770-1810 Chichester.

(9)I

39

John Paul 1728(m)-c1772. Winchester

Bowl types a and b. 9 dies on stem (1-9) Winchester. Mark 5 from a well at Bishops Waltham and also St Catherines Hill, Winchester.(Hants Field Club Trans XI 1930.p.266.)

40 Perhaps Roger Pond of Hursley, Hants 1718-43

- a. Probably the same type of bowl as b. Mark in relief on both sides of the bowl several examples Devizes Mus.
- b. I/P on spur IP in cartouches on left of the bowl. Devizes Mus.
- c. IP relief on base. Salisbury Cheminant Coll.

Attribution to maker doubtful c. looks 17th century.

41. Queenhithe, Cheminant Coll. ?ION/PERR/Y. c 1660-80.

John Perry Reading 1694(ob) 1636 Boro Recs probabaly Sen & Jnr.

42 Stem mark James Pobjay c 1685-1707(oB)Norton St Phillip.Som.
Rubbing Farleigh Hungerford Castle. Devizes(Atkinson Coll)
Bath 5 examples. Name in Frome after 1715.

43 James Poe/g. Stem mark 5 examples from Bath. Type as shown with marks (1) relief (2) incuse considered by M Lewcun
to be by Poe.(1) 18 examples Lower Common site Bath (2) Orange Grove.
Perhaps JAMES, POE or PUGH with G. for Galstonbury !

44. a-d Wimborne Museum e from Poole date range 1680-1720

45. * John Powell Free Gloucester 1702.

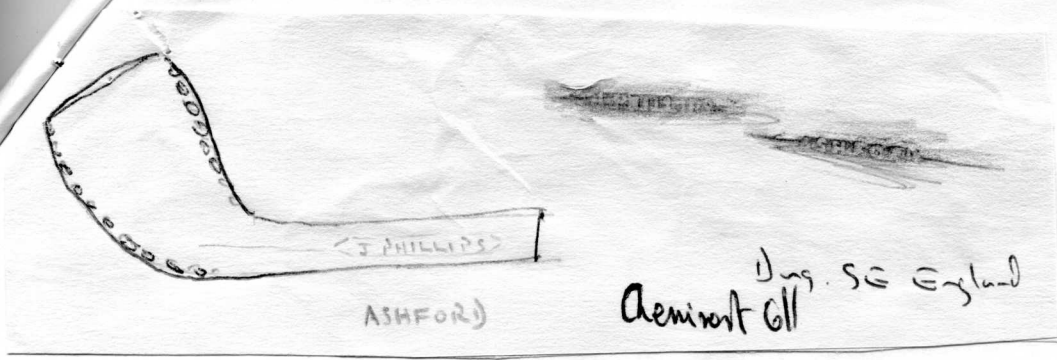
- a stem Hailes Abbey ? incuse.
- b Brimscombe. Glos. c.Woodford Green Glos. Port Royal. Salisbury Delaware. e St Marys City sites 1-13 Heeless bowl

46Stem marks. Welsh "ewton Mill Monmouth

47 Dorchester a several sites. b Churchm St. c Wadham House, and upwey
and pit 23High St 1680-1720

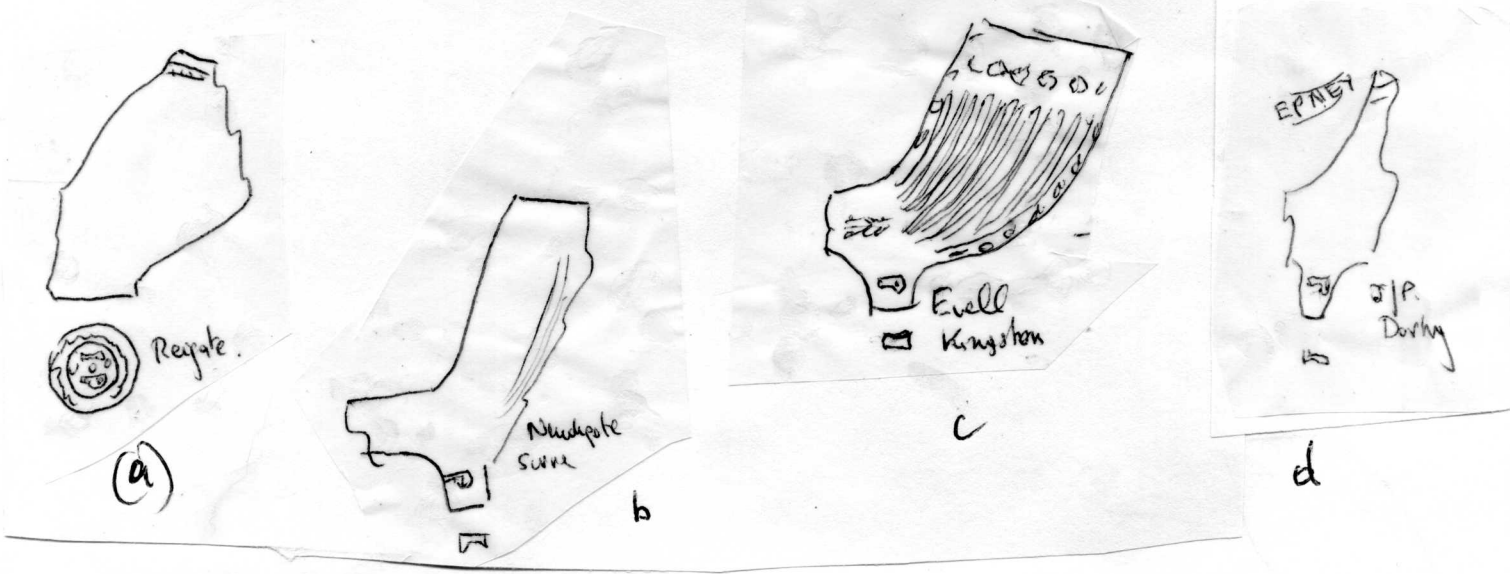
48 BathL_oer common. A John Painter on the rent roll Old Brentford. 1646.

(9) H

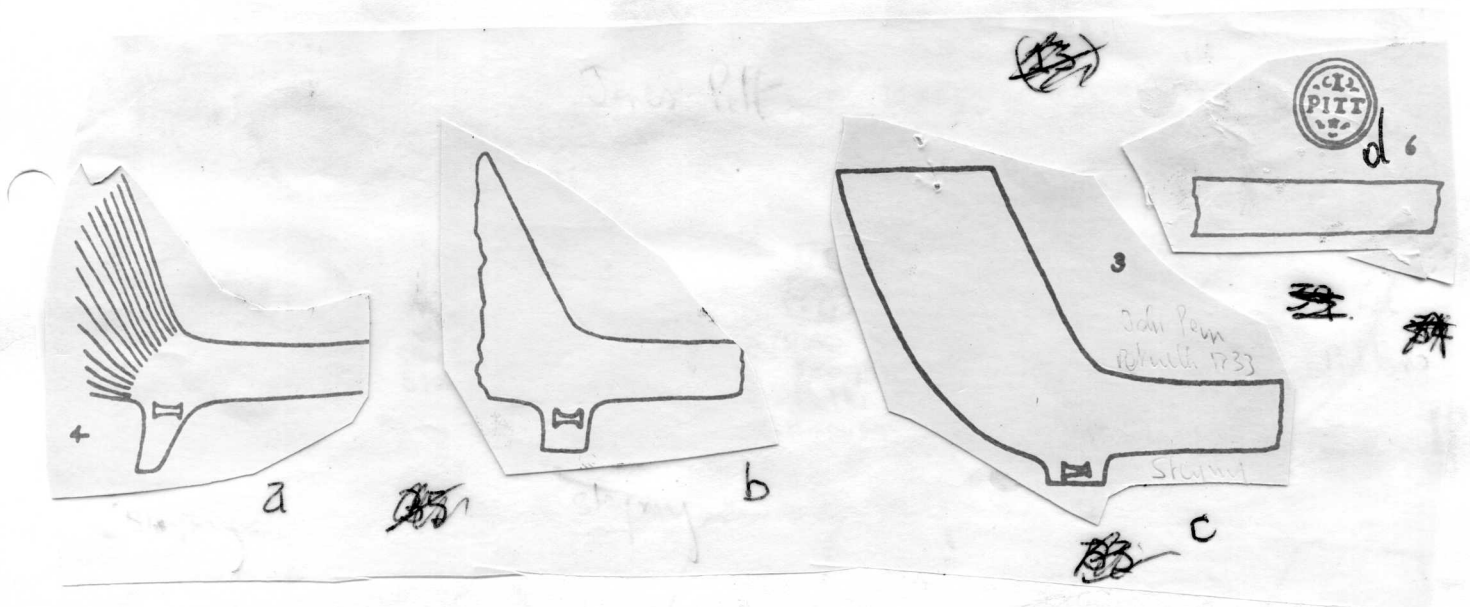


Ding. SE England
Aemirant 6/1

36

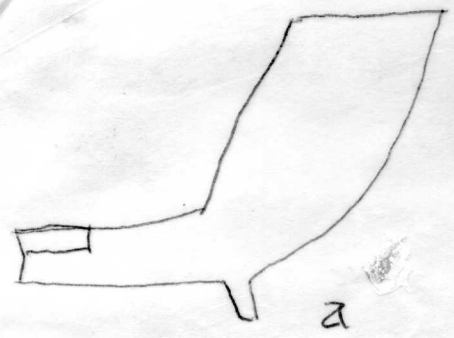


37

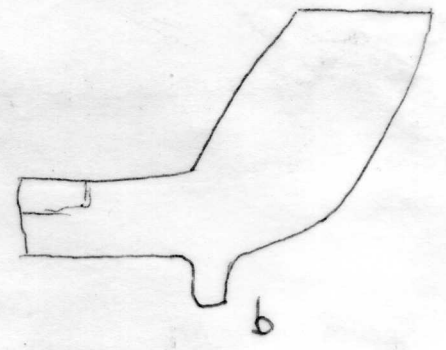


38

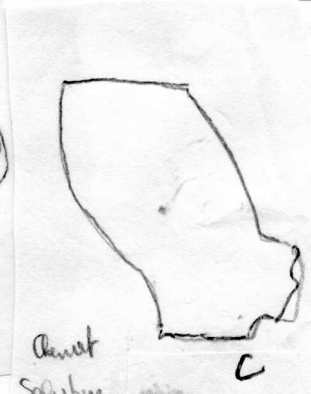
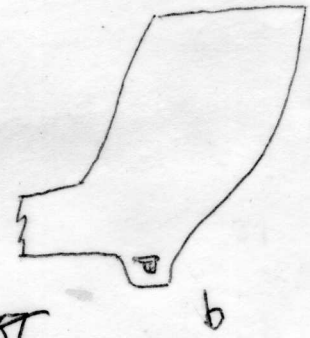
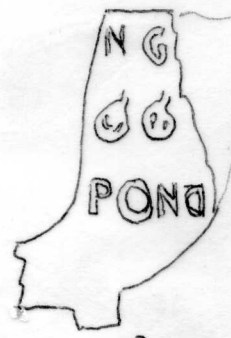
(9) I



① JOHN PAUL
 ② JOHN PAUL
 ③ JOHN PAUL
 ④ JOHN PAUL
 ⑤ JOHN PAUL
 ⑥ JOHN PAUL
 ⑦ JOHN PAUL
 ⑧ JOHN PAUL
 ⑨ JOHN PAUL



39

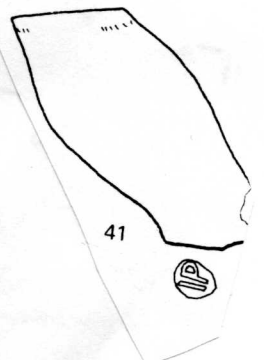


Christ
Salisbury



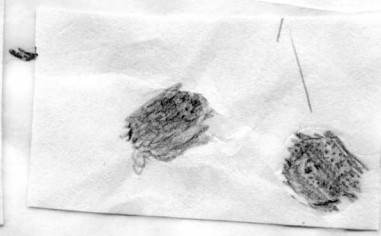
ST

40



Poole Exc
post 1990

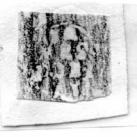
169406
Sohi Perry
Ready



Queen h the
Chen's out Call
- 10N
PERRY

41

TAM
POBI
AY



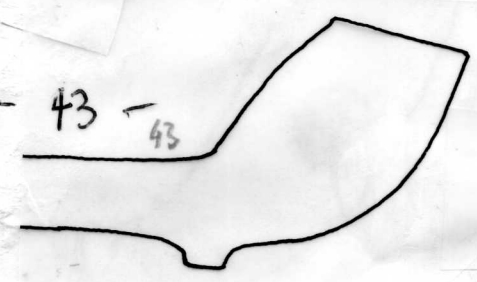
TAM
POBI
AY
Stem
5 samples

42

TAM
EPOE
+G

Stem
5 samples
Bathi
M. low am

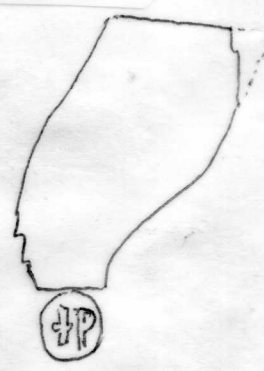
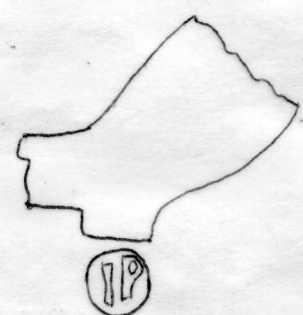
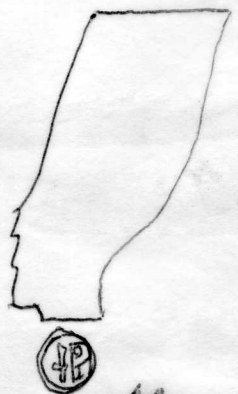
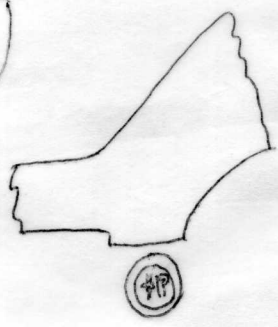
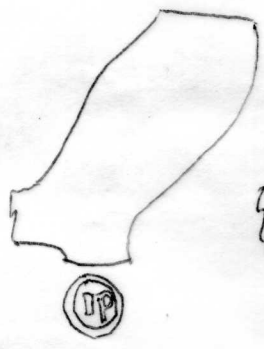
43 - 43



IP

(1)

IP
(2)



44

a

b

c

d

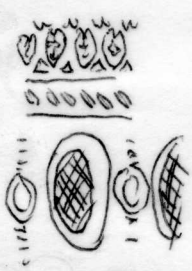
e

JOHN
Powell
Glo

stone
Howls Alley
Free 1702
? Inval.

a

IP



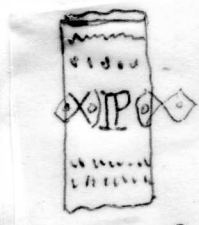
21
Brinscombe
Obs

b

IP
St Mary's City
St 1-13

Heales Bowl

45



c



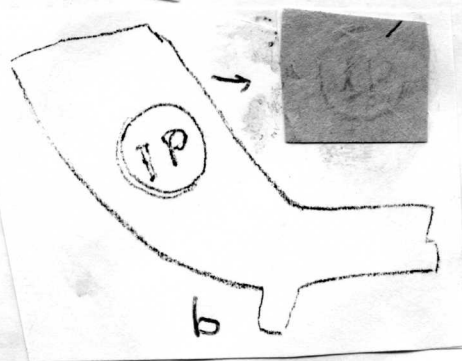
Llanvins
Glangeton



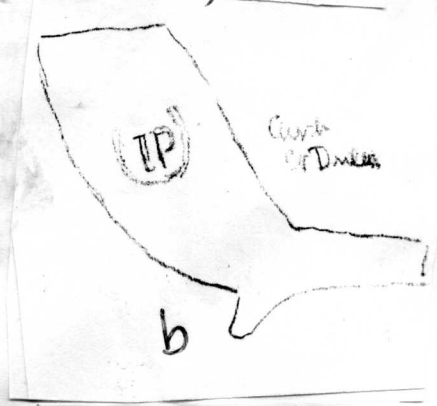
St Johns site j
St Mary's City 2 examples



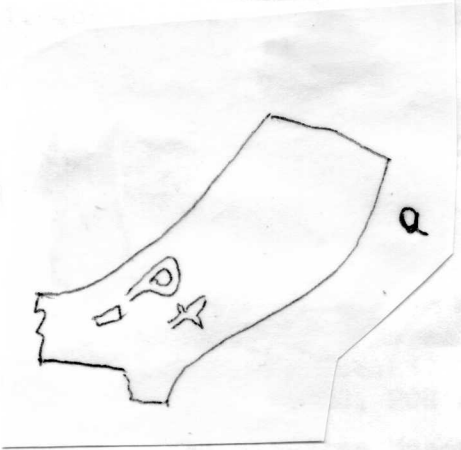
46



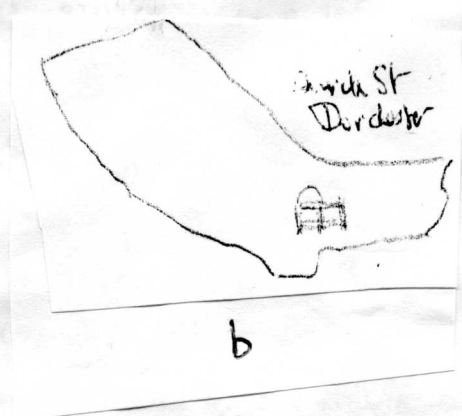
b



b

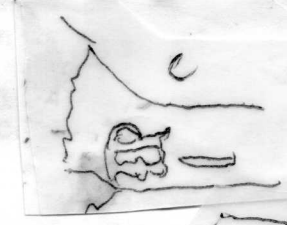


a



b

47



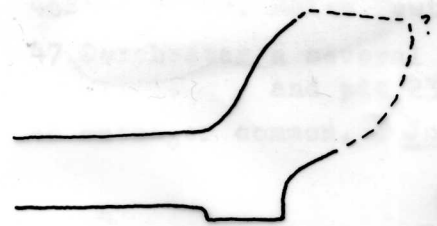
c



IP
or IE

King's Reach Maryland
St Mary's City BARRIE

1646 Old Brook
Rode Post



JOHN
PAIN
TER

48

JOHN/PAIN/TER, wheatsheaf above,
incuse on heel c1660

no of examples: 1

From Lower Common site 19/6/85

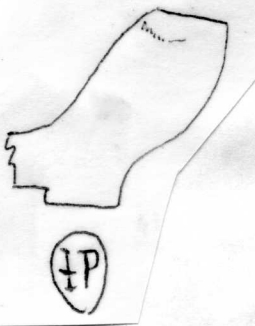
Reference: L5119

(9)K

- 49 Nunney Castle. c 1640-50 O'Neil Coll Birmingham Mus.
- 50 Usk Excavations apparently incuse Market Street
- 51 Exeter Mus. 9/64 c 1650 incuse
52. All Bristol origin.
A (J & P) B. & C Pritchard Coll, British Museum
- 53 a Dublin Castle and Court. b Dunboye Castle Co. Cork c 1650-70
- 54 & Bideford/Barnstaple Group XXI
a Launceston Castle I PARN or PARNT
b. " " and Exeter Mus.
- 55 Kingston Lacey Hunting Lodge 1989
- 56 Exeter Mus. v Allen No 871
- 57 James Pearce of Stonehouse, Plymouth. 1824
a. Type 13G. From Balderton, Newark, Notts.
b. Plymouth
c. Type 13G. Plymouth with the City Arms.
-

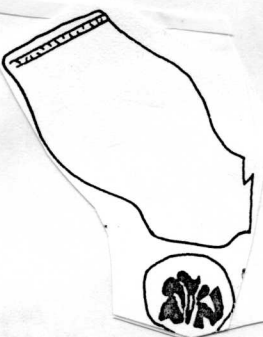
(9) K

(9) K



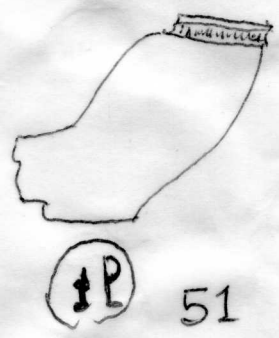
A9

Dunboyne Castle



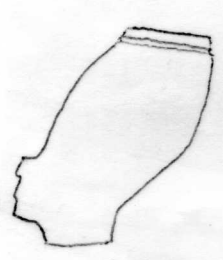
50

Milk St
Linn

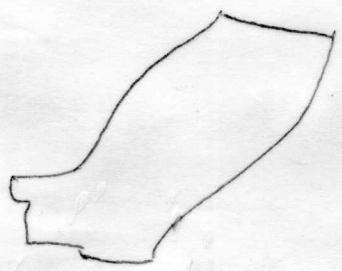


51

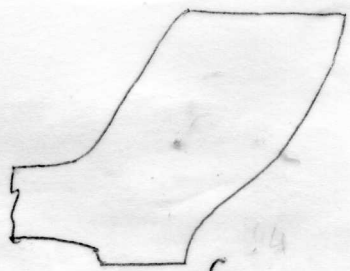
(9) K



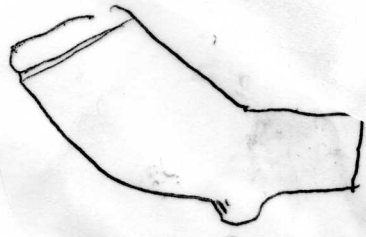
192 2A



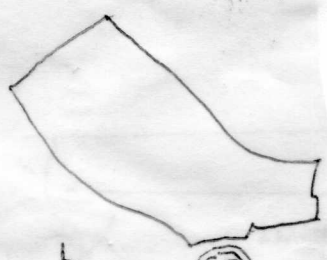
45 6B



47 C

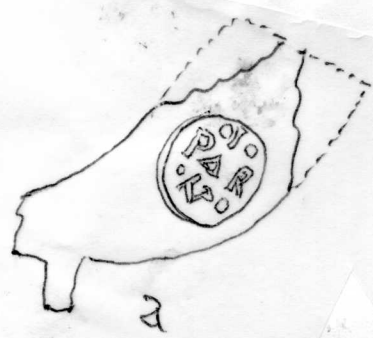


a
about 3:1
Dublin Cart
Dublin Castle.

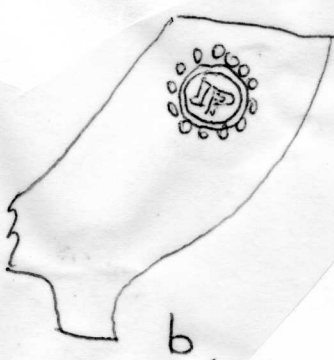


b
Dunboyne Castle, Co. Cork
c1650-70

53



a



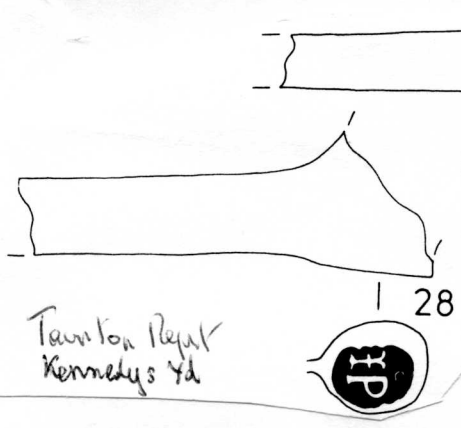
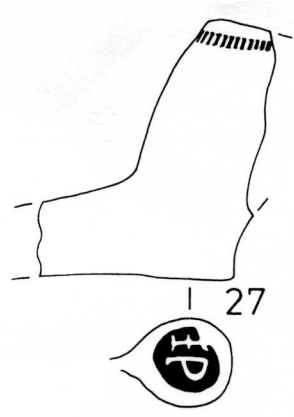
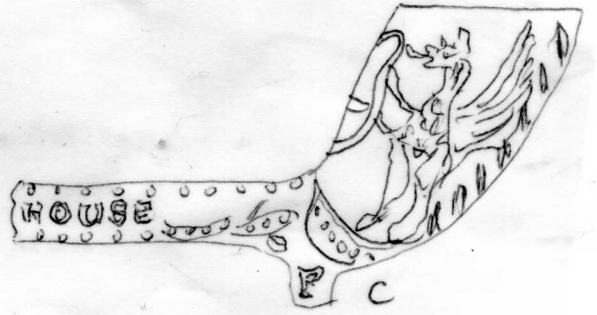
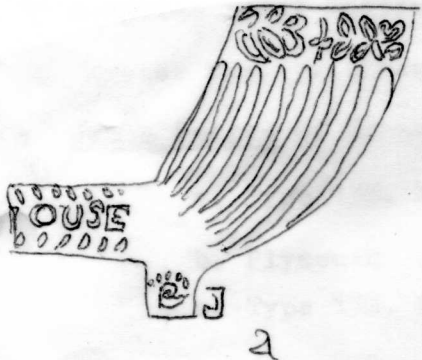
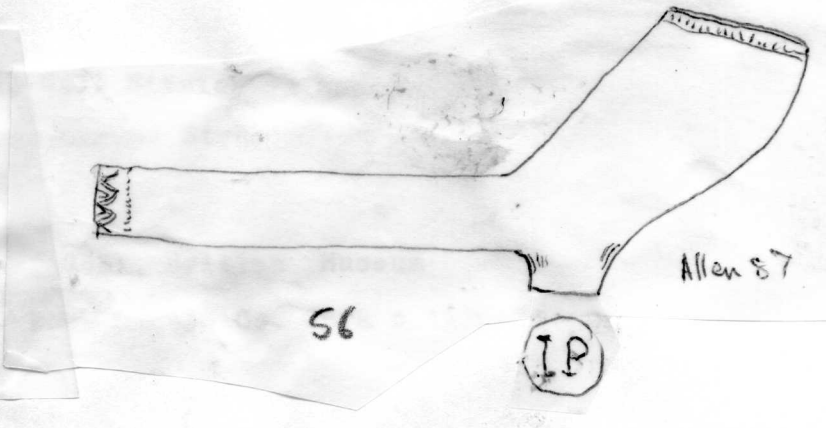
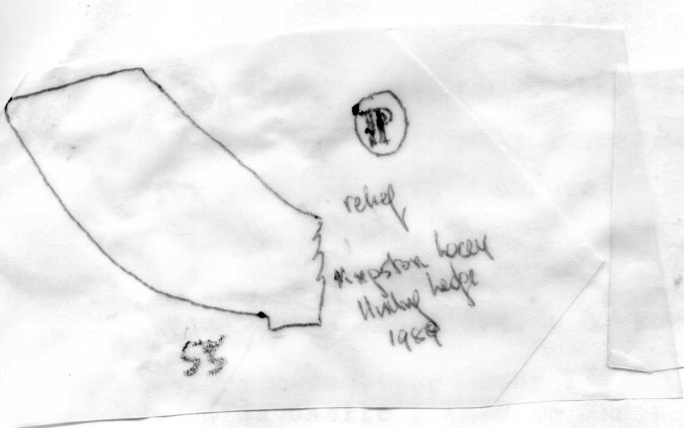
b.



G. XXI
Bodford 1650-1700
Bawby

54

(9) K



(9)L

58 John Pearce. Bristol ~~1569~~ 1696-1738 b base mark (J & P)

59 All probably Bristol

a. Type 10/11B

Bristol(J & P), British Mus, Bragge Coll. Port Royal,
2 examples. Ferrylands, Newfoundland, c.1690-1720. Rippon Coll,
Exeter Mus, 6/64 from Bristol

b. Port Royal

c. As b but different cartouche from Bristol(J & P)

d. I/P on spur. Port Royal

e. Port Royal

f Bristol(J & P). Port Royal where type also occurs with no cartouche
and IP incuse on back of bowl. Welsh Newton Mill. Mon.

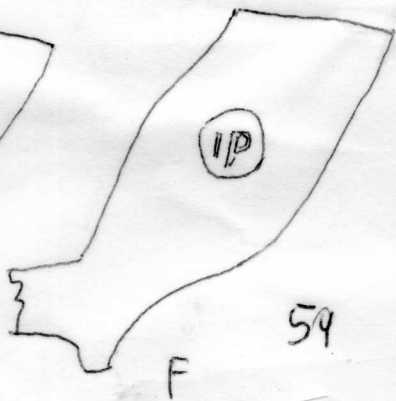
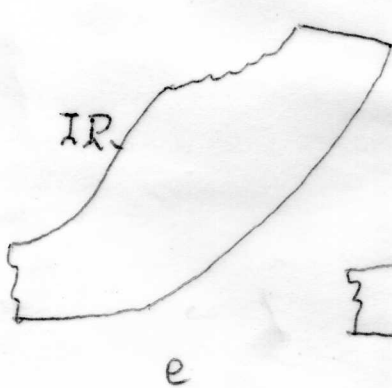
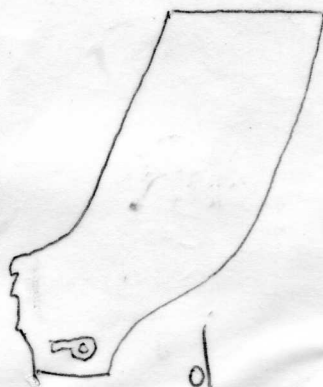
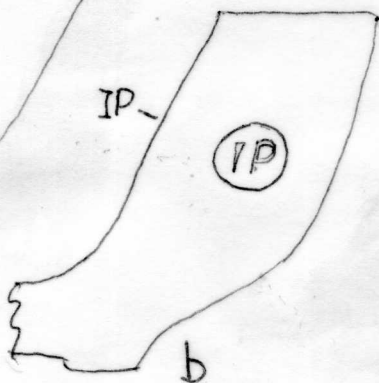
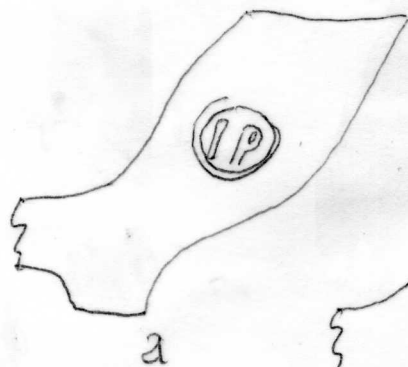
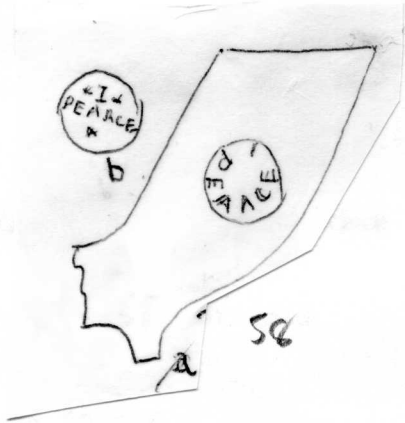
g. From Bristol, Rippon Coll, Exeter Mus, 6/64, Polished. Welsh Newton Mill, Mon

h. As g for type, Bristol (J & P)

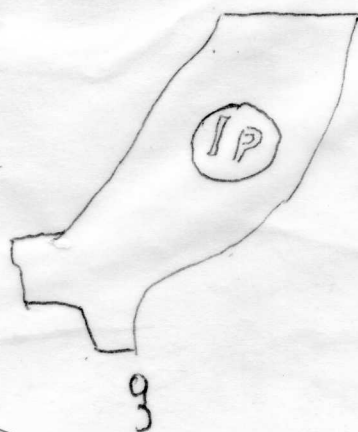
i Bristol(J & P)

60. Bristol (J & P) c 1790-1820.

(9) L.



59



(9) M e N
(44)

54

IP

John Pratt (1) c.1680-1710. Taunton

- (a) Exeter Exc. 6/64. c.1680-1700
- b and c, Type 6B or 17W. Taunton Mus.
- d and e. Exeter Mus, Binfield Coll and Rippon Coll from Taunton.
- f. Taunton Mus, 2 examples. probably different Pratt - c.1750. 1700

g. Taunton Report.

55

Isaac Prance of Topsham fl 1670-1700. 1668(d.Bapt)

- a. Rippon Coll. Exeter Mus. 7/64. Polished, stem trimmed for metal mount.
- b. Rippon Coll, Exeter Mus. From Topsham. 7/64. Polished. 2 examples
- c " " " " " 3/3 "
- d " " " " " 3/3 "
- e Binfield Coll, Exeter Mus, no bowl types scale about 2:1.
- f Cheminant Coll from Topsham

d e f all Taunton.(Atkinson Coll) all incuse. d reversed,

56

Probably Isaac Prance of Topsham

- a. Rippon Coll, Exeter Mus, 7/64.
- b. " " " 6/64.
- c. Binfield Coll, Exeter Mus. Scale about 2:1.

Note Prance pipes are nearly all polished and clay varies from grey to white.

(9)N

57.

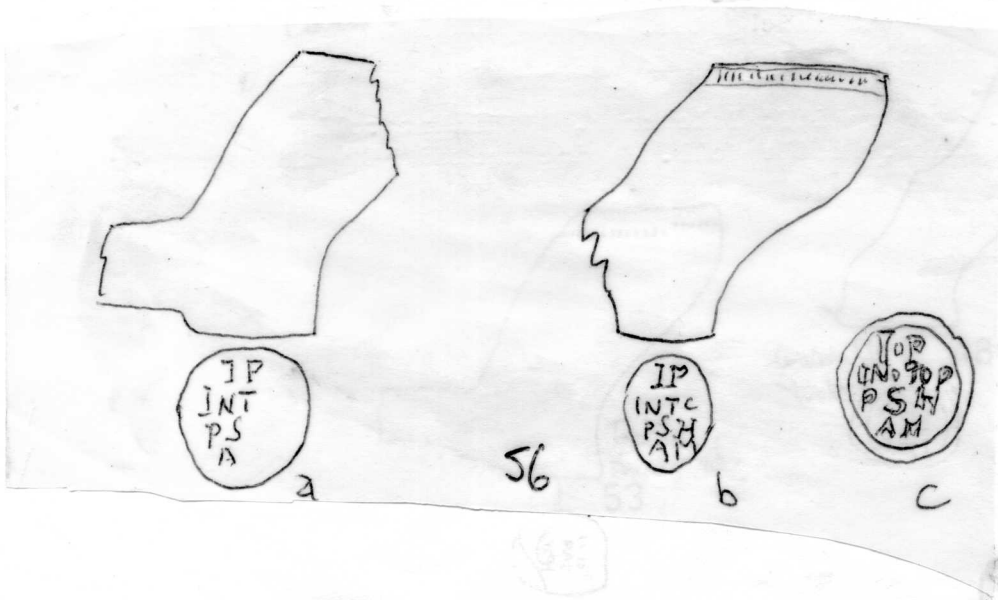
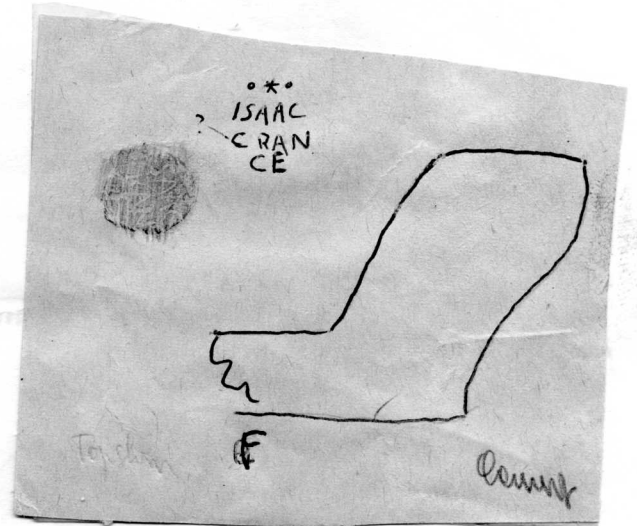
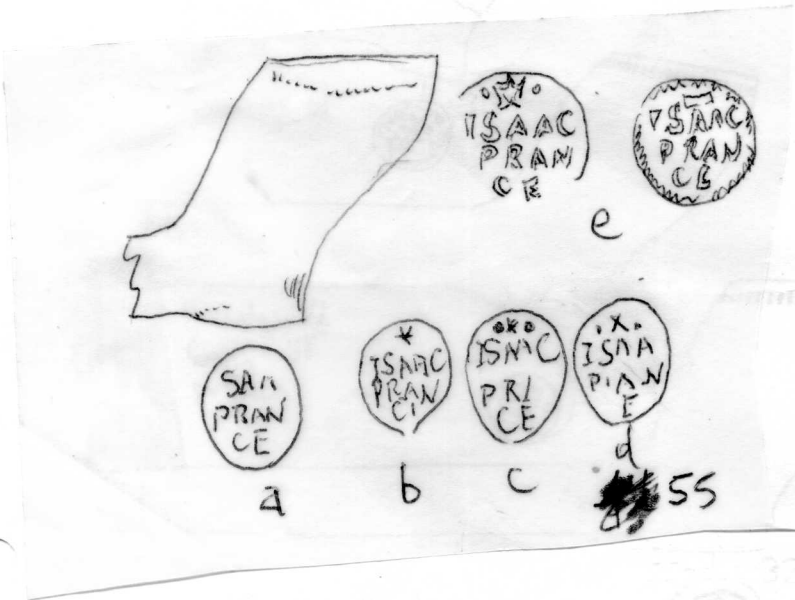
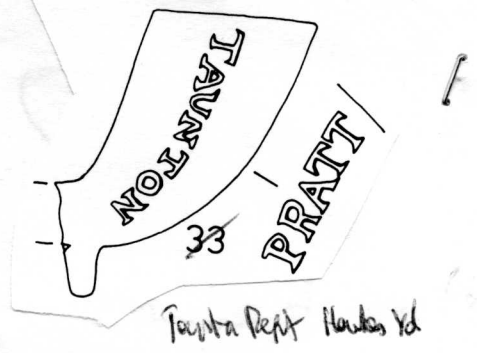
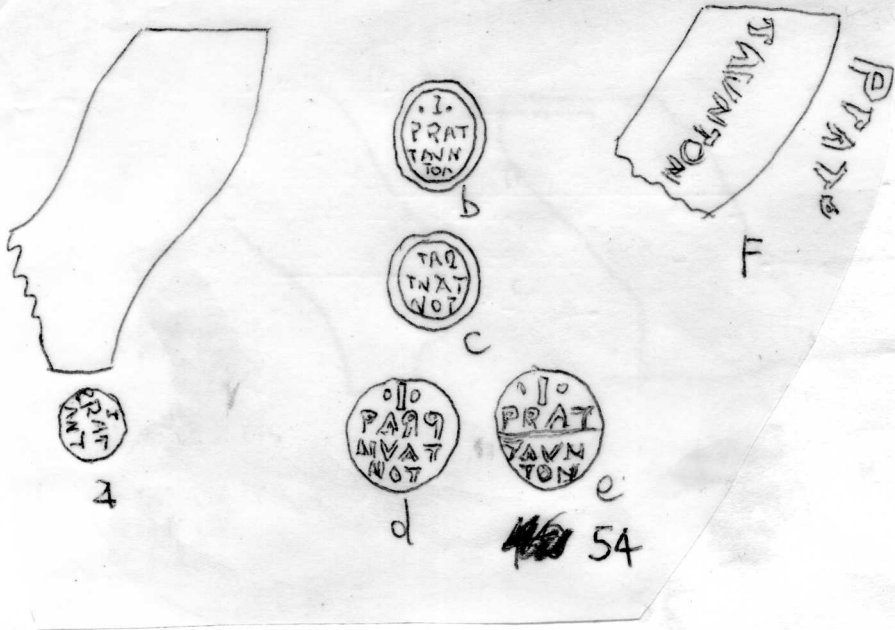
- b. on a polished pipe type as 55a. Topsham, Rippon Coll, Exeter Mus 7/64.
- c,d,e all Binfield (coll) Exeter Mus. Scale about 2:1 ? incuse or relief.
- f. Taunton Mus 2 examples.

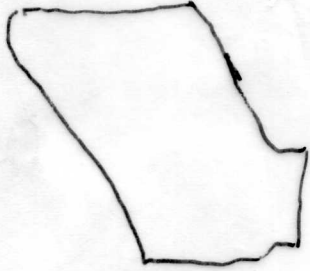
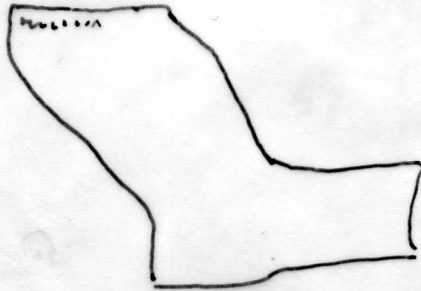
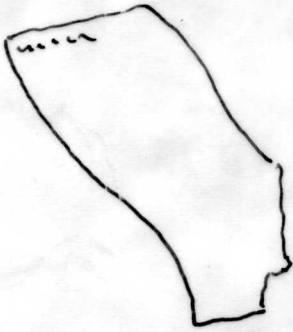
58 Binfield and Rippon Colls, Exeter Mus, Both from Taunton Scale about 2:1.

g John Parsons possibly Bridgewater. 1670-1700 according to Lewcun

b. Taunton Report

Set 1 (9) N.





Pop. D.R.
Alhambra.
Tombul
d

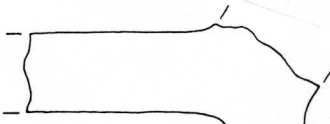


Patrol (?)
Invent
Tombul



Patrol (?) F
Invent
Tombul.

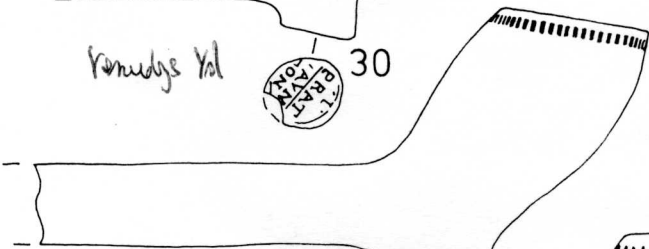
55



Kennedy's Yd



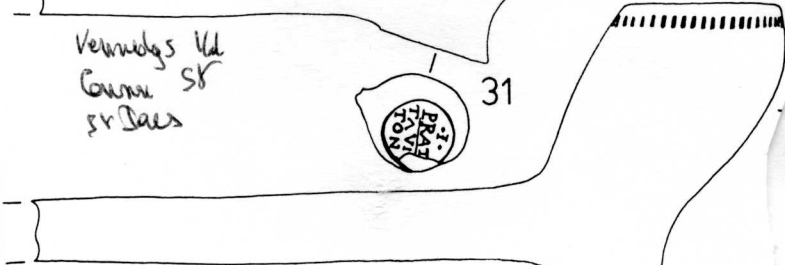
30



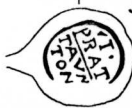
Kennedy's Yd
Common St
St. James



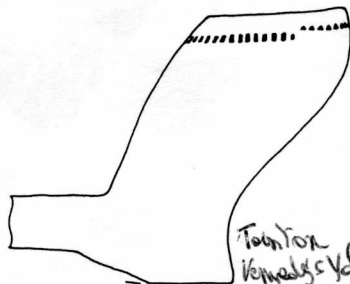
31



Tombul Report
Kennedy & Harbor Yd
Common St

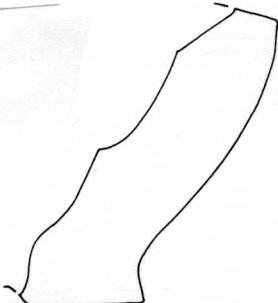


32



Tombul
Kennedy's Yd.

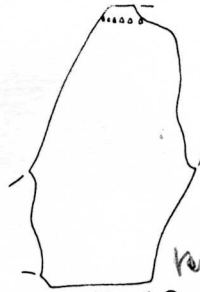
53



Common St
Tombul



48

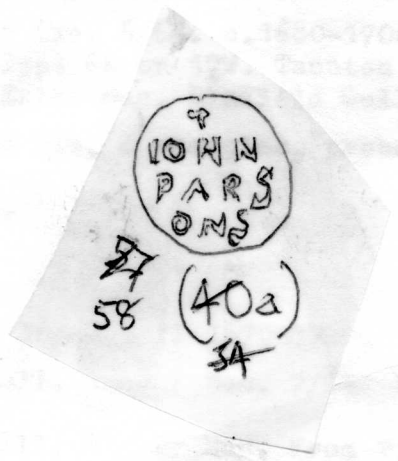
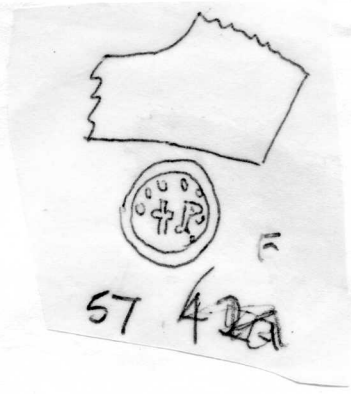
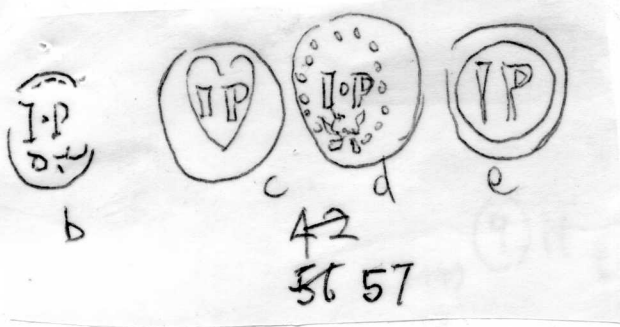


Kennedy's
Yd
Tombul

49



(9) N



158

