



THE NATIONAL PIPE ARCHIVE

Registered Charity Number 1043065

Accession Number: LIVNP 2014.01.192.N

Description: Clay tobacco pipe mark index, compiled by Adrian Oswald.

Comments: These are marks with a N surname initial. Arranged alphabetically by Surname (i.e. AN, BN, CN, DN, etc.). Each section starts with a typed list giving details, including provenance for each piece, which have an identifying number that is a simple sequence of numbers (i.e. 1, 2, 3, etc.) occasionally with sub-lists, if there are more than one example (i.e. 1a, 1b, 1c, 2a, 2b, etc.).

Key Words: Clay pipe; heel mark; Oswald;

Any images in this PDF must not be lent, copied to another party, sold or reproduced in any way without prior permission from the National Pipe Archive and the copyright owner, if applicable. Reproduction or publication in any medium is expressly forbidden without written authorisation and should include an acknowledgement worded 'Courtesy of the National Pipe Archive' and quoting the relevant accession number.

(1)

AN & N.

- 1
 - a. Bristol(J& P.185)
 - b. " " 186.
 - c. Bristol, British Mus, Pritchard Coll 115.
 - d. St Fagans Mus.
 - e. Carters Grove Virginia. Pit A. 1620-65.
 - f. Gloucester, Cirencester, Stroud, Hereford.

2. Chester.

3a. Nightingale/Kings Bench. County Hall. Puddledock BARIX 42.

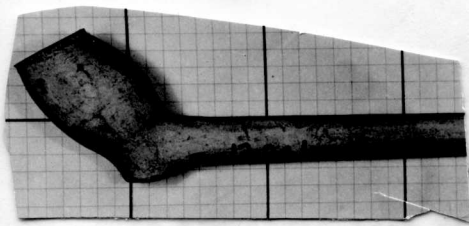
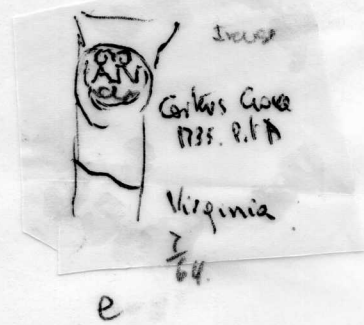
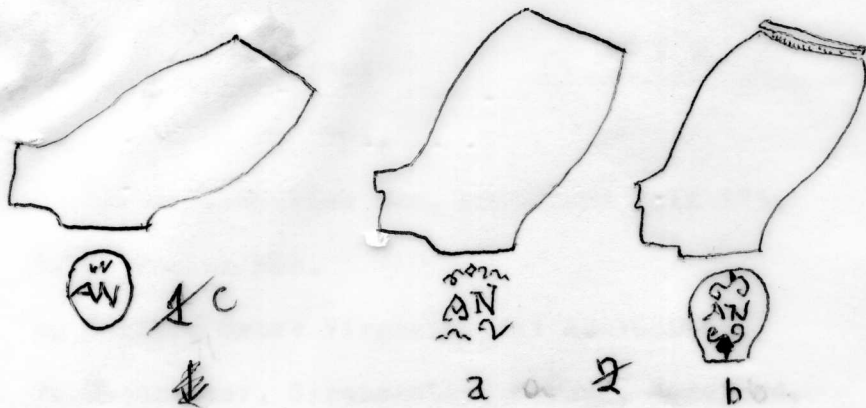
3b NEWCASTLE.from Whieldon site also Bells Pomona factory 1724-44

3b also Fort York Benkulu Indonesia. Stem mark

BN

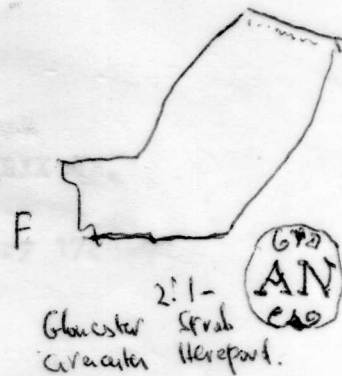
1 B/N crowned. Type 9G. Fort York Benkulu. Indonesia. Perhaps Nicholas
Batchelor Free London 1679 St Dunstons in E. Initials reversed.

(i)

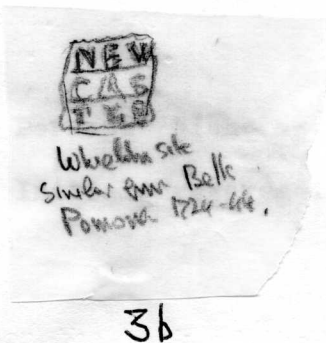
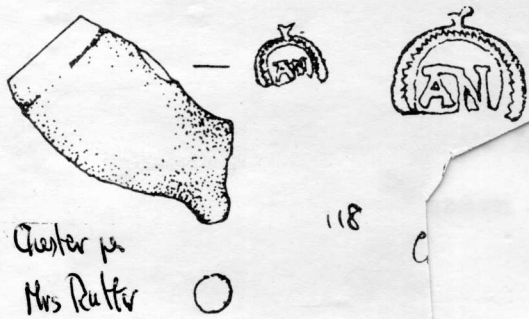


St. Fagan's

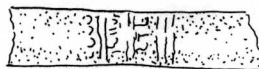
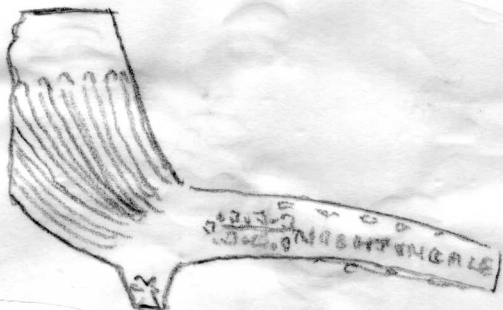
? Anne Nomy
ob. 1677
Mother of Richard
Fl. 1640-70



1



2



Bentula



Fat Kah.

(2)

1. Sunderland post 1850.
2. a. Guildford. relief- 2 half moons above 6 pointed star 3 pellets below.
b. Horsham relief. 6 pointed star and 3 pellets below
c. London, Thames and smaller from Leatherhead, Atkinson Coll.
d. Oatlands, Surrey.

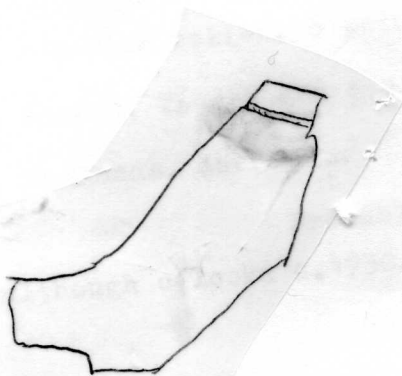
Probable Maker Edward Neave, Guildford 1677-1716(oB)
although c looks c.1730.

(2)



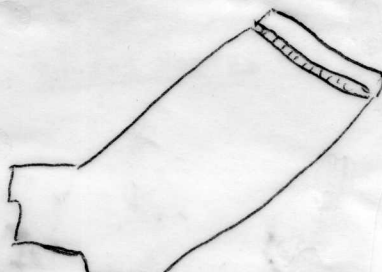
2

1



6 pointed slipper
3 pellets
Circ 61/62 - 1/2 inch

a



E/N. Version
6 pointed slipper
3 pellets

b



1

c



Darklands

2

d

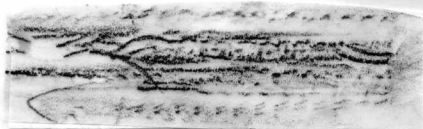
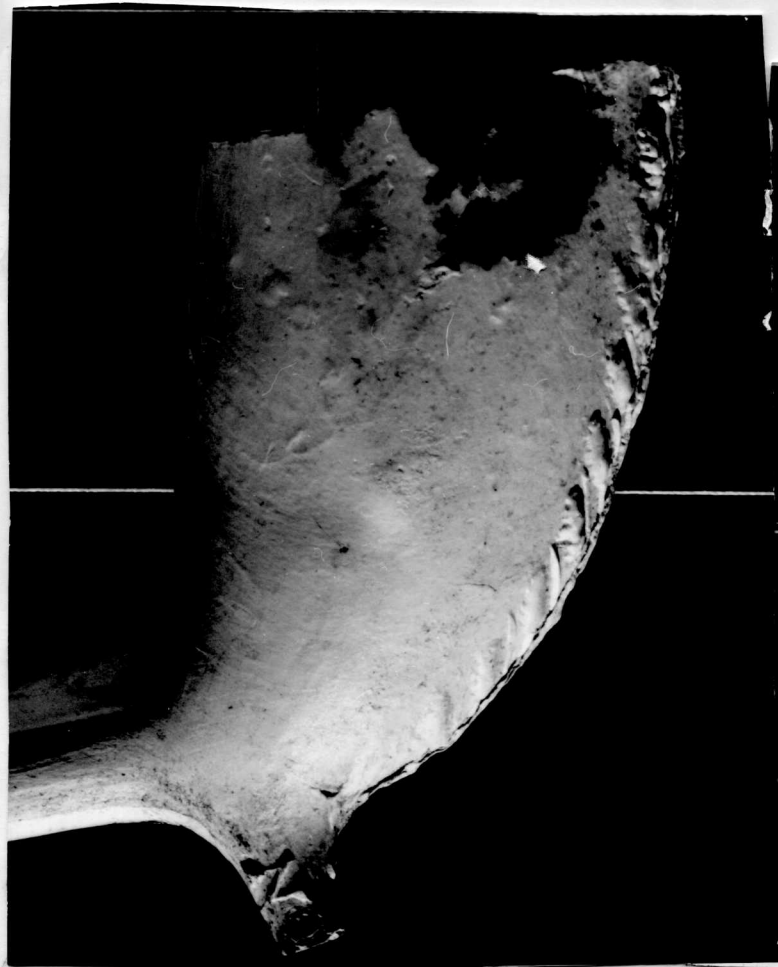
(3)

GN

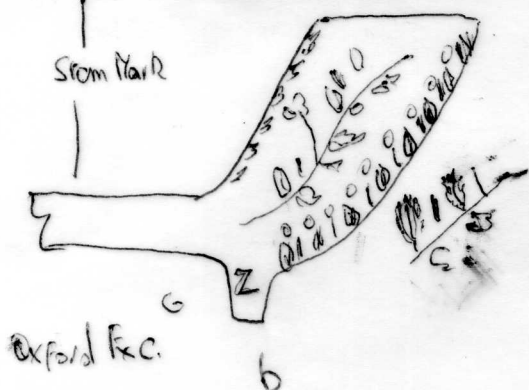
George Norwood 1852-63 Oxford.

- 1 a. St Ebbes Excavations Oxford.
- b. G/N NORWOOD incuse on stem.
- c. G/N 11 acorns and leaves on mould line.
- d. Oxford Excavations
- e St Ebbes excavations (rubbing)
- f. Oxford Excavations. Polished mouldline left.
- g. NORWOOD/ETON ? Weybridge. c 1870 ? Richard Henry Norwood 1876+
and Egham 3 examples 0 Guildford and Staines
- Woolwich Dockyard plain with leaves. c 1830-50.

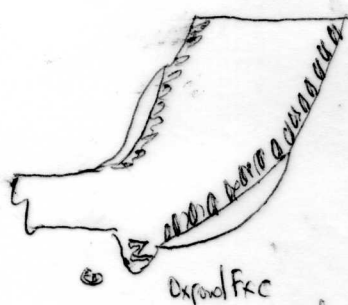
2. Cheminant Coll. Cheminant Coll from a Victorian rubbish pit.



Stom Mark



Oxford F.C.



Expand Fx C

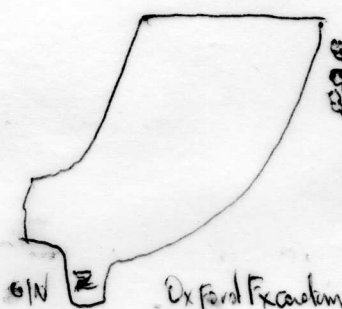


SrEhbes

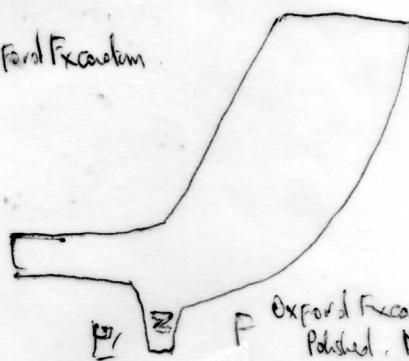
14 leaves



G



Oxford Excretion



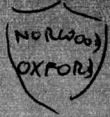
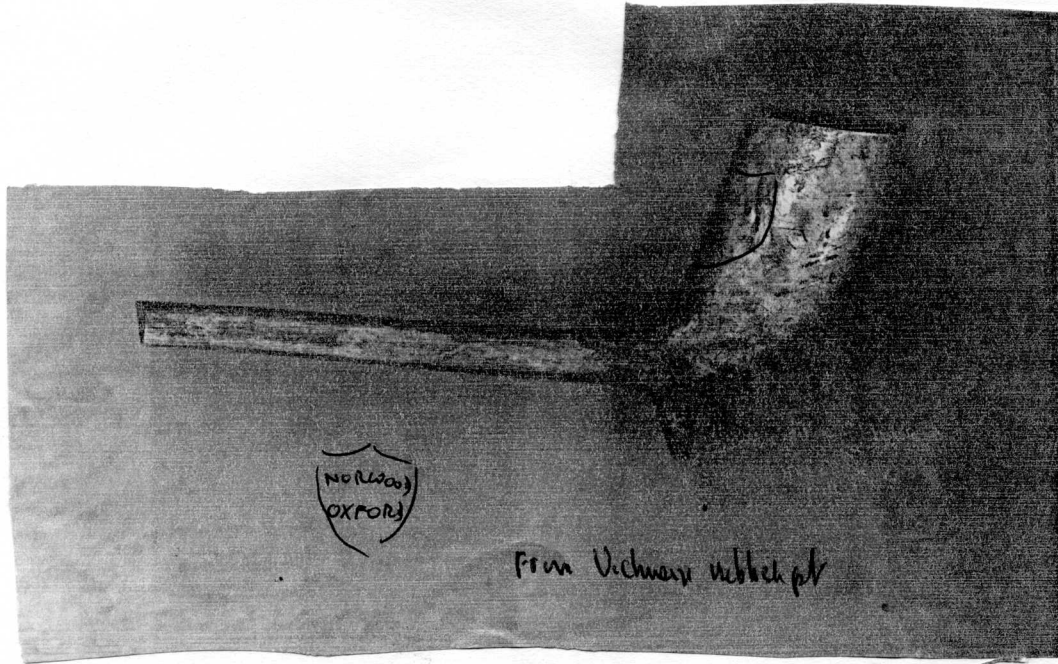
Oxford Excavation.
Polished. Mould line
various.

NORWOOD

ETO Weybridge

Als Brookside, Brookfield, Bardonia. SNC 80, 170

(3)

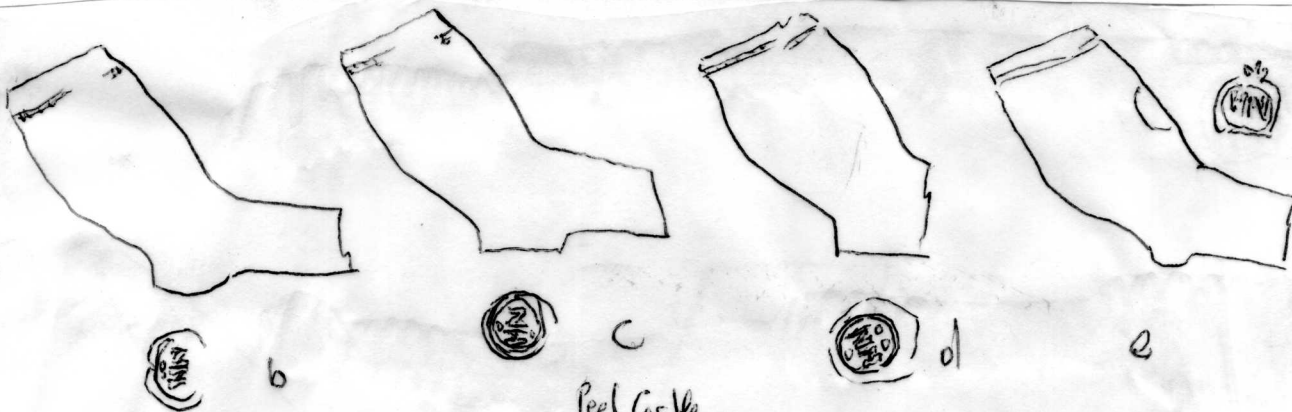


From Vickman notebook

2

1. Henry Norman(1) Hull 1674-88
 - a Hull Sheppard 6. b From Hull, Rippon Coll Exeter Mus.
 - c Trinity Court Hull Temple Entry d & e Hull Excavations
- 2 Henry Norman(2) Hull 1724 Polls.
 - a & B Hull excavations. also with wig curler c.
- 3 a Moorfield London, BM Bragge Coll.
 - b. Queenhithe Tatman Coll
 - c Elkins Coll

All incuse 1620-40
4. Queenhithe. Cheminant Coll Mark crowned incuse back of bowl just above stem.
- 5 Norton Priory back of bowl B.A.R.IX.
 - b-e Peel Castle excavations. c also from Easington Lancs incuse (Lancs Arch Bull. 2.No 5.
2. J&N Leicester Green Coll

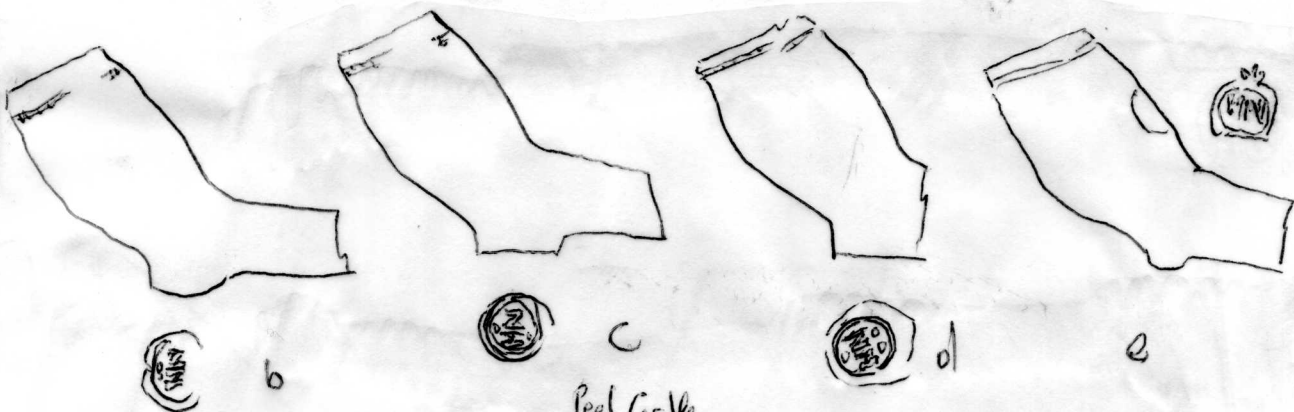


5b



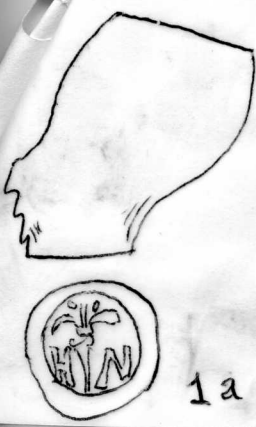
Nathan Perry
Pineau
A.A.R.I.X.

5a

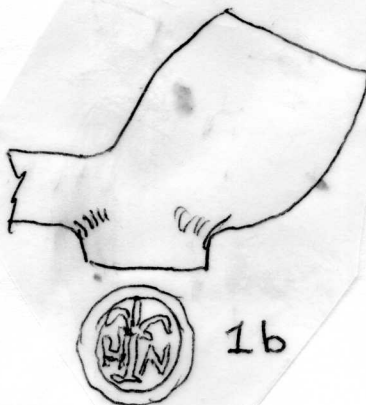


Peel Galle

5b



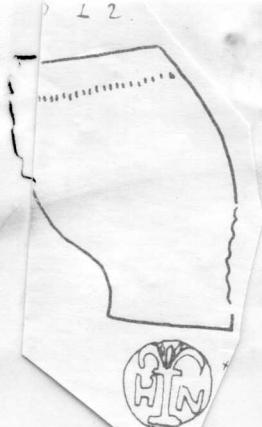
1a



1b



1c



1d

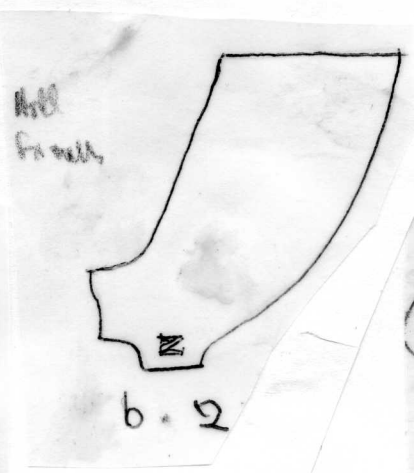
approx. three
full size
mouse mark
on base of early 17th C
pipe



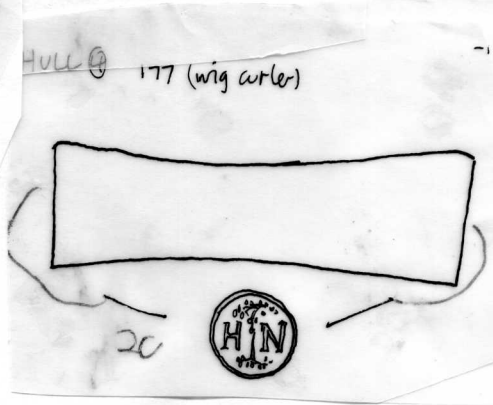
1e



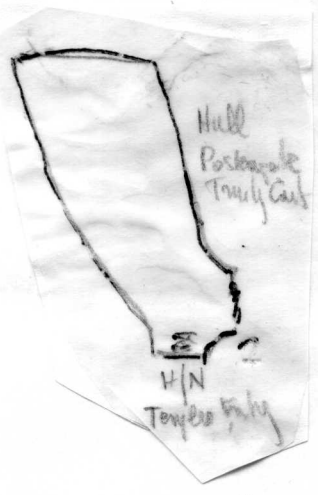
2a



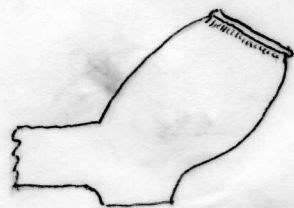
6.2



2c

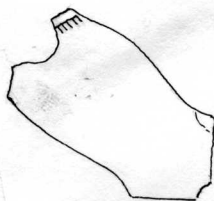


2d



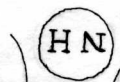
HN 3

a



Tatwan Coll
Queenhite.

S.B.D. 3.2 MM



NH

3b

HN

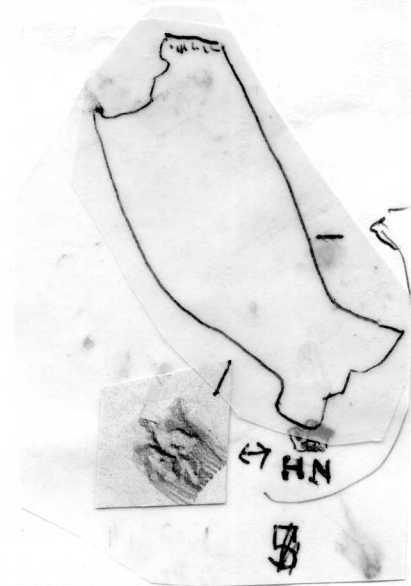
approx. twice
full size
incuse mark

on base of early 17th C
pipe.

6

Queenhite - Elmer's Coll

3c



5

4

5
(4)
IN

1. John Naylor 1761. Lincoln.F 1776. Boston(m)

a. Other side Boston. Arms of Boston. Boston, Leavton.

b. " " River bank Witham, Boston.

c. From Peacock and Royal Inns Boston.

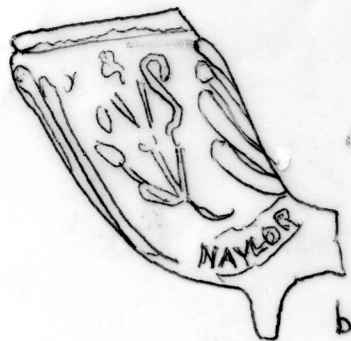
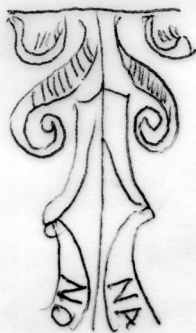
d. From Bourne and Boston

e. Rosegarth St, Boston. 1830-50. Maker uncertain.

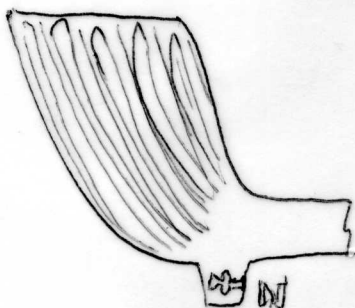
Also Jⁿ. NIMMO. Fort Beausejour, New Brunswick
Shipwreck, Mallory Town Ontario

(5)

(4)



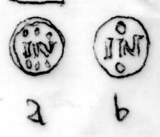
1



(6)

HN

- 3 Type 8G. c.1680. ? John Nodwell ,London.F.1668.
a and b both from Queenhithe. Atkinson Coll.
- 4 Type 8/9 G..aQueenhithe. Atkinson Coll. Also Elkins Collalso d.
? different maker from 2. Mark style Central S.
b Rubbing, Cheminant Coll from Thames
c. " " Queenhithe.
- 5 Type 7B. Bristol. J & P 187 and 188. c. 1670-90.
- 6 J.Newman Plymouth 1873-83.
All Plymouth Mus.
7. Egham, Surrey. B.A.R.VI
8. a and b. Portsmouth, Hall Coll. John Nicholson. Fareham 1818-24. Baptisms.
Also. NICHOLSON/MANSFIELD. James Nicholson 1853. Mansfield
- Type 13G Mould line on base. Putney c.1820. Atkinson Coll.
- " 14. I/N Reading Mus. John Norris 1828-48 Reading and perhaps wife.
Y/N
- " 13. J/N Winchester
I/N Fluted and leaf CR. - Staines
N/N. Leaf C.19 Staines



2

6

3



b



a

4

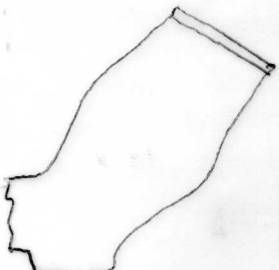


Stem

c

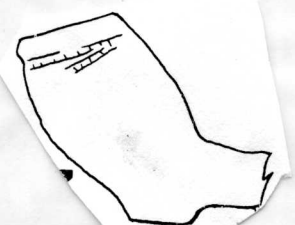
Type as 4.
Queen's (Chenest)
also Elms on Fretted frame

and  Elms Type II.
ol



IN IN

5

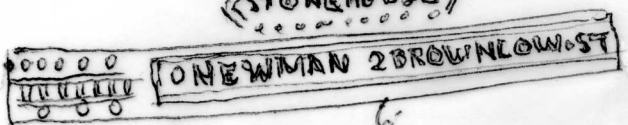


Market St
H.S.R. Portsmouth



City Forester
Tatman Coll.
BARIX. 19.

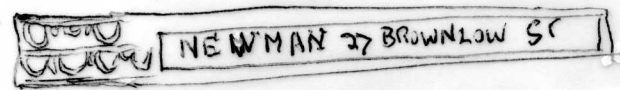
«STONEHOUSE»



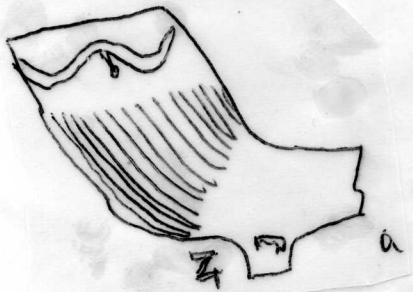
6



6

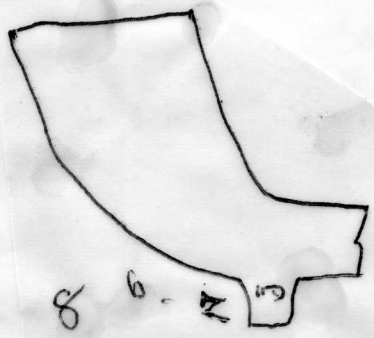


6



2

a

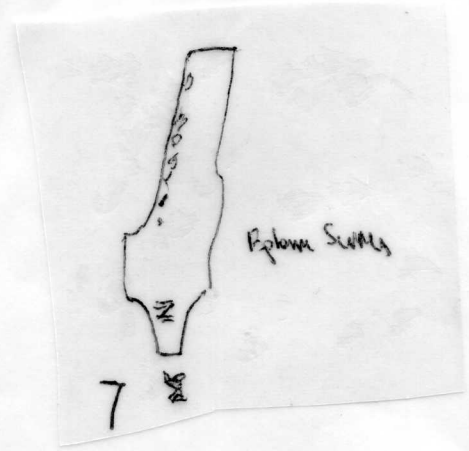


8

b

2

10



7

2

Epitome Series

(7)

(3)

MN.

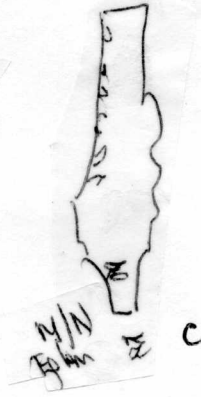
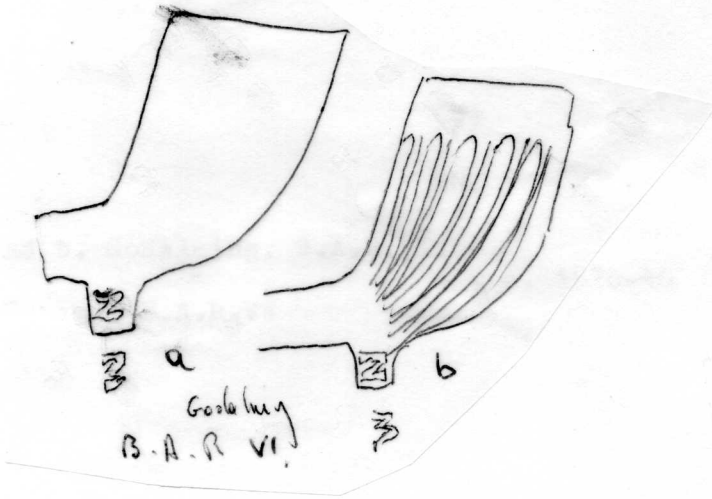
IN

1. a and b. Godalming. B.A.R.VI.

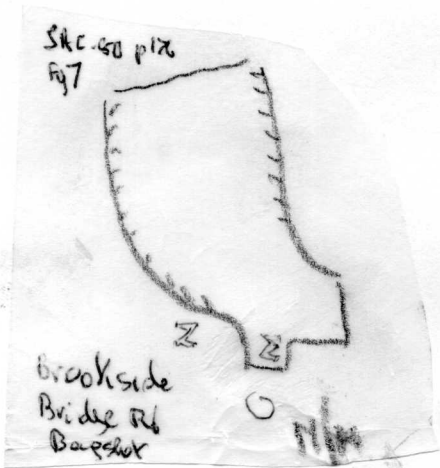
c. 1820-40

c. Egham . B.A.R.VI

(4) MN. (T)



1



(6) A.

RN

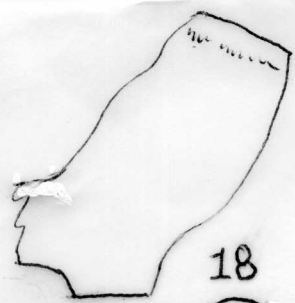
Richard Nonney(cont)

17. Budbury, Bradford on Avon. From Topsoil of a barrow, O'Neil's Notes.
18. Birmingham Mus 8/64. Bath.
- 19
 - a. Stroud, 7/64.
 - b. Bristol,(J & P)
- 20 Bristol, Wills Mus, 7/64. Cheddar Exc.
- 21 a and b both Port Royal
22. Bristol(J & P). No bowl shape given



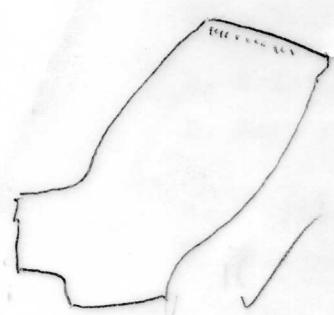
NEW
NONE
Y

17 ✓



CA
NONE
Y

18 ✓

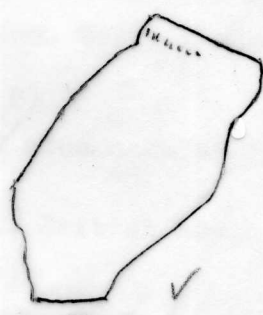


R-N
Y

a

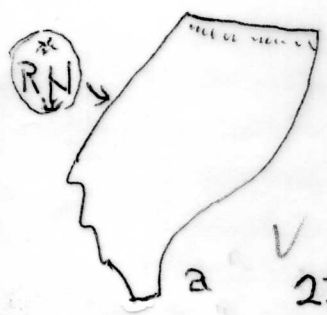
19

DE
RN
b



(R-N)

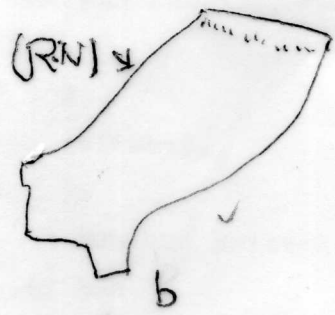
20 ✓



R-N
Y

a

21 ✓



(R-N)

b

R-N 22



(3)
7
(4)

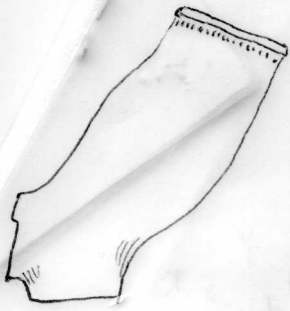
RN

Richard Nonney 1652-1713(Ob), Bristol.

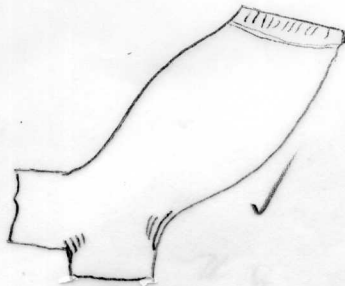
1. a. Pritchard Coll from Bristol, British Mus. Thomason Coll(mainly from London) Nottingham Mus. Queenhithe, London. Caerleon Exc.
b. Pritchard Coll from Bristol, British Mus. Ashton Bridge.
2. Thomason Coll, Nottingham Mus.
3. Hartlebury Mus, Worcs, mark as 2.
4. From Bristol, Rippon Coll, Exeter Mus, 7/64, Black.
5. a. Bristol, (J & P)
b. Port Royal and also mark as 7b.
6. a. Pritchard Coll, British Mus.
b. Bristol (J & P)
7. a Bristol Mus, 8/64.
b. Taunton Mus.
- 8 Nottingham Mus.
9. St Fagans Mus.
- 10 a. Cheddar Exc and rubbing. also similar Jones River, Knowles Coll.
b. British Mus.
- 11 Bristol, (J & P)
12. Cheddar Exc, polished.
- 13 Bristol(J & P).
14. Bristol, Wills Mus and Bristol Mus, 8/64.
- 15 Bristol, Wills Mus
b. Bristol, (J&P)
16. Bristol, Rippon and Binfield Colls, Exeter Mus.

R/N. Leap - Stones

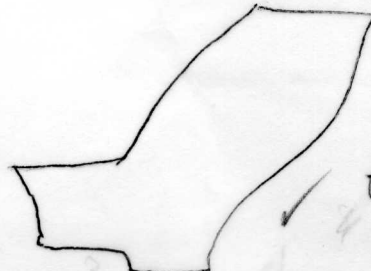
(6) (7) (8)



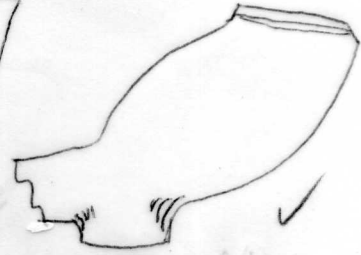
1



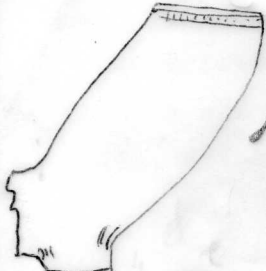
2



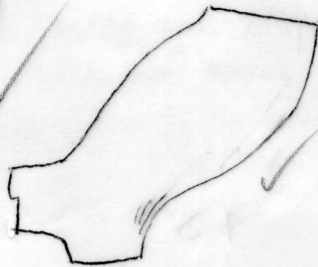
3



4

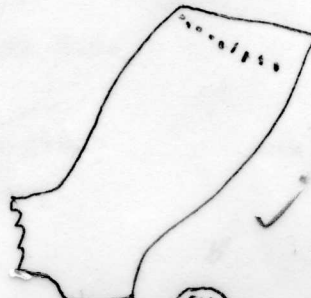


5

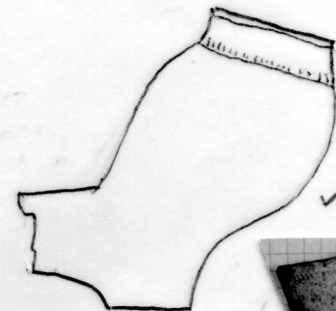


RN

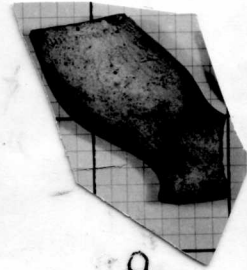
6



7



8



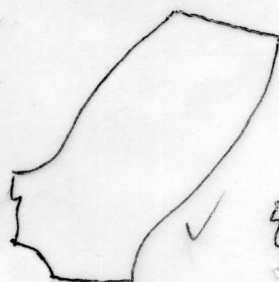
9



all known

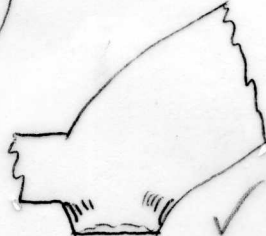


10

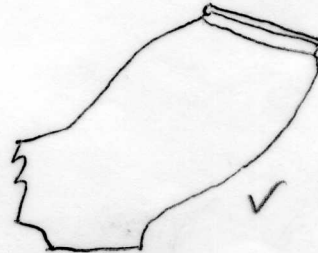


RN

11



12



13



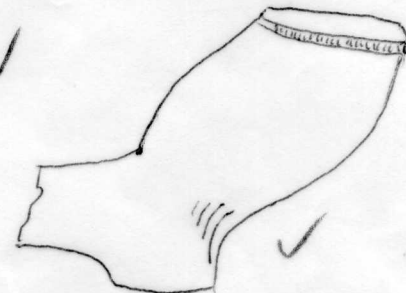
14



a

15

b



16

(8B

RN

1. All from Broseley,
 - a and b Thursfield Coll,
 - c. Type 1/2By Atkinson Coll- Rich Nayl)or.
2. Richard Nee ve 1774-1818(ob), Lewes.
 - a. Newhaven, Atkinson Coll.
 - b. Lewes, Atkinson Coll.Also an Armorial pipe, Hanoverian arms type as B b.
3. See. G.N for Norwood. Same mark. c 1850+



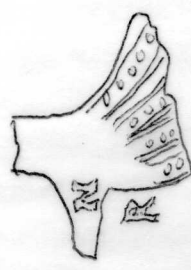
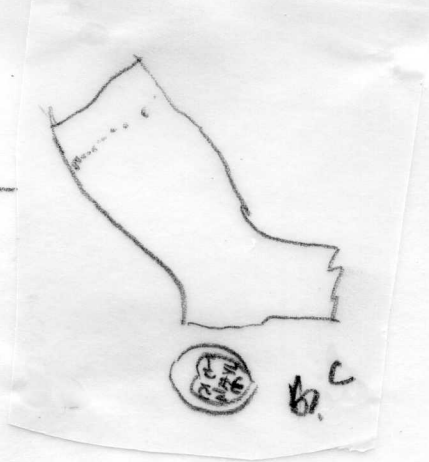
a



b
1

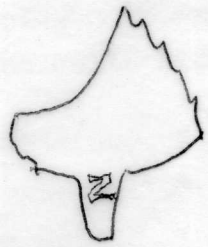


c

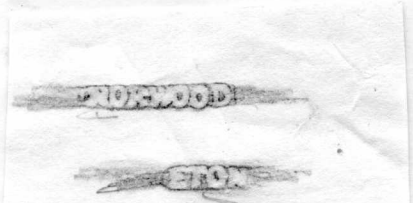


a

2

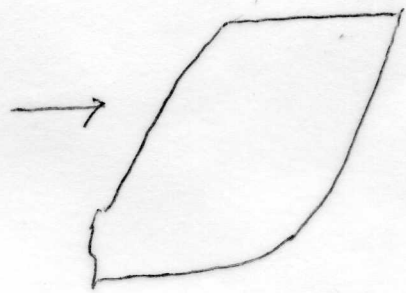


b



Presum Richard Norwood
t 30. low feather
back bowl.

N



Greenlike
claw 3

(9)

SN

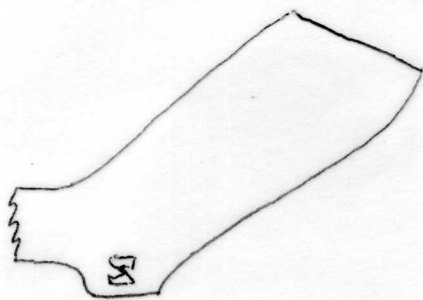
1. Samuel Nodwell, London 1701. J. Kingsley his app.

a. London, Atkinson Coll

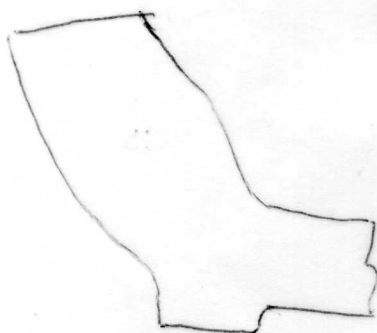
b. London. Cheminant Coll, ex Gant.

SN

c. Tatman Coll IT perhaps John Taylor 1723-5(Children bapt)P.Regis
St Dunstons Stepney.



a



1



b

? ~~John Taylor 1672~~
~~Soc...~~

CN - BAR. VI - 69
Chemist e Nes had Green



SN alt at IT. Atkinson coll looks same
also taken coll.

1/T in relief on bowl.

S/N relief on spur.

I note similar Chemist
coll. but the S/N is
different. Have you
seen this one?

at red

S. Nodded 1701-11

S. Kingsley has off.

Best wishes

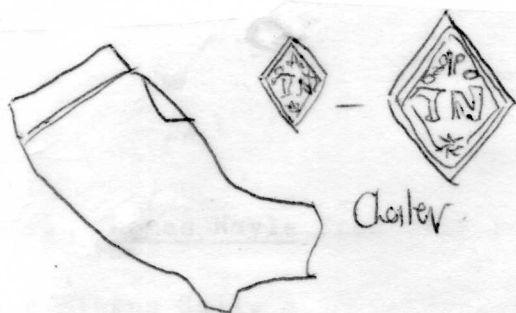
Colin.

(10)

TN

1. Chester. Thomas Nayle Free 1721 looks a bit late. *Much too late*
2. London Elkins Coll. c 1680-1700. ? Thomas Norton. 1696(O.A.(j))
3. Thomas Neeve Lewes 1775(B) 1802. Fl c1820. Atkinson Coll *Newhaven*

BIRMINGHAM

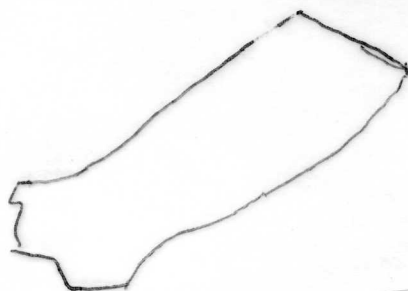


1

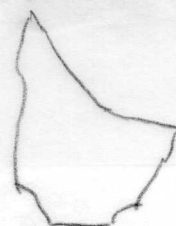


Larger
Sketch

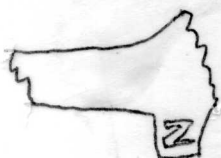
Base mark on pipe type
20. (Letters in relief)
Elms Coll



2

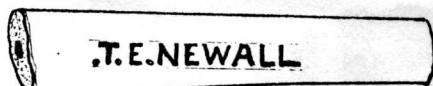


Tower Pier.
Taken Coll



3

Newman



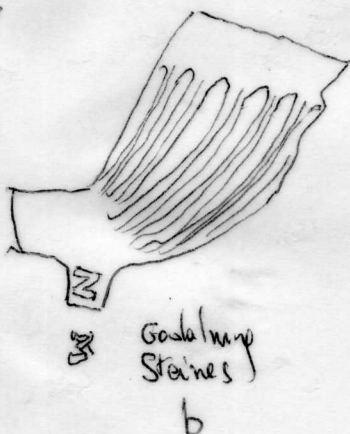
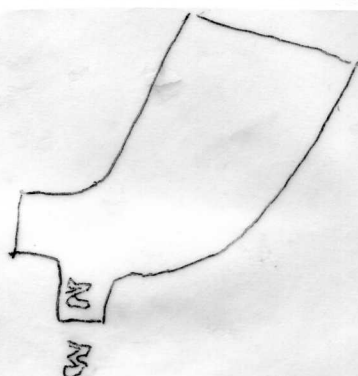
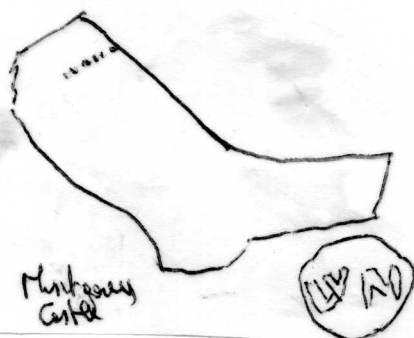
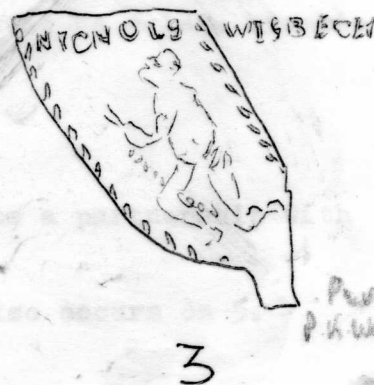
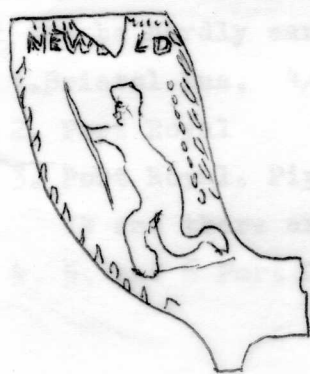
90

Leicester (Green Coll)

(11)

WN

1. William Nightscales 1835-68, Sleaford
Sleaford Excavations.
- 2, William Newbald, 1841-44. Gainsborough, probably Retford prior to 1840.
Newark Exc. Slave kneeling to Liberty.
3. William Nichols 1830-75. Wisbech
Slave kneeling to Liberty.. P.K.Wells Coll.
4. Brosley type 3. Montgomery Castle. c 1660.
5. a. Godalming and Guildford(2 examples.)
b. Godalming and Staines. c. 1820 v. B.A.R.VI.



(12)

WN

Sheets 12 and 13 pipes probably of William Nicholas of Bristol 1730-75 but Nos 1 and 2 may represent examples of the work of William Naylor, 1722-34 of Bristol in which case No 2 typologically must be a late example for it can be hardly earlier than 1740.

1. Bristol Mus, 4/64.

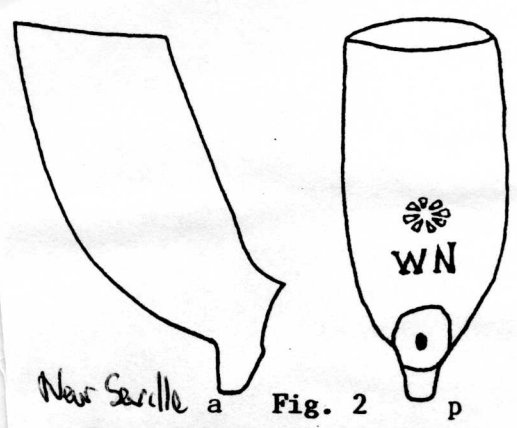
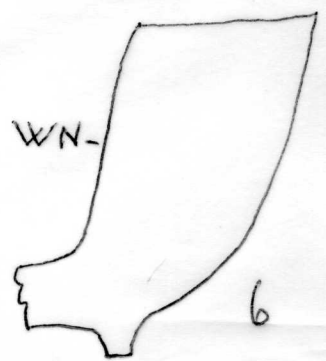
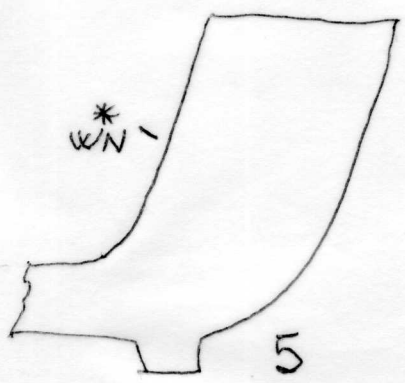
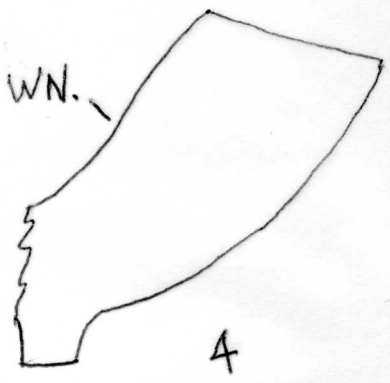
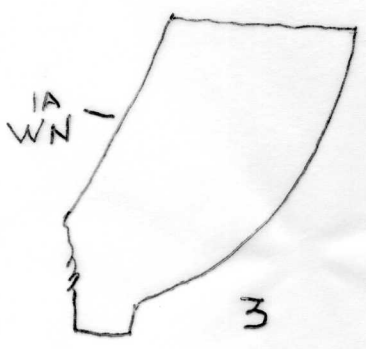
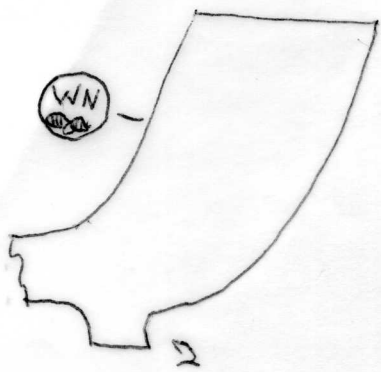
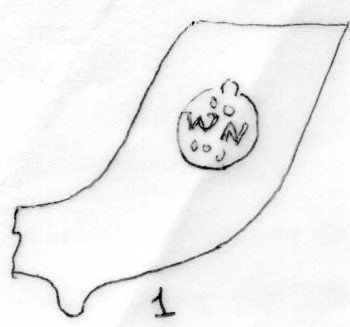
2. Port Royal

3. Port Royal. Pipe type c.1740-70. IA suggests a partnership with WN and there are several possibilities.

4, 5, and 6 Port Royal. WN without the star also occurs on 5.

Mr. Seville a. Pls. 2

SE3/102/11/23



Near Saville
Jomara
Fig. 2
S83/102/II/485

(13.)

WN

7. Bristol, Marochan Exc. Bristol Mus, 4/64. Port Royal.
8. Williamsburg per LTA. (Photos) several examples.
9. " " (Photo).

WICTIO

1 A 8 +

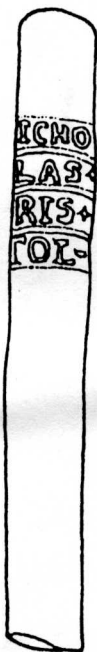
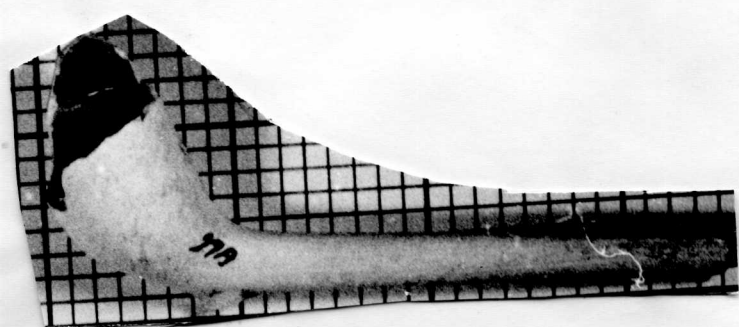
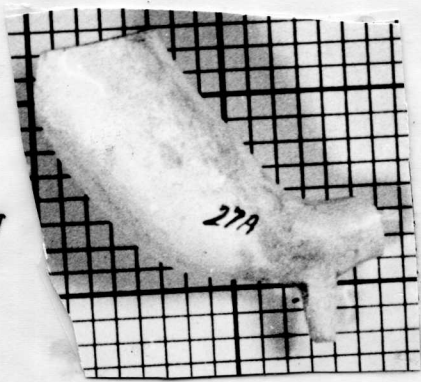
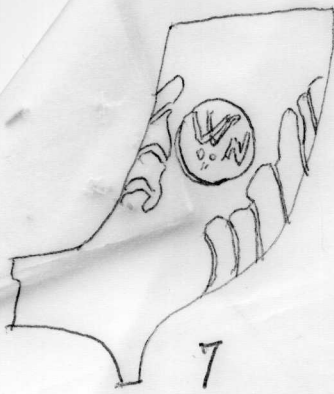
1 A 5 +

TOL

Detalle

Fig. 4

507/102/111/68



HICHO
LAS
BRIS
TOL

Detalle

Fig. 4
S83/102/IIIi/68

Nas Snelle
Javanen