



THE NATIONAL PIPE ARCHIVE

Registered Charity Number 1043065

Accession Number: LIVNP 2014.01.192.C2 (Part 2 of 2 LC-WC)

Description: Clay tobacco pipe mark index, compiled by Adrian Oswald.

Comments: These are marks with an C surname initial. Arranged alphabetically by Surname (i.e. L C, MC, NC, OC etc.). Each section starts with a typed list of giving details, including provenance for each piece, which have an identifying number that is a simple sequence of numbers (i.e. 1, 2, 3 etc.) occasionally with sub-lists, if there are more than one example (i.e. 1a, 1b, 1c, 2a, 2b, etc).

Key Words: Clay pipe; heel mark; Oswald;

Any images in this PDF must not be lent, copied to another party, sold or reproduced in any way without prior permission from the National Pipe Archive and the copyright owner, if applicable. Reproduction or publication in any medium is expressly forbidden without written authorisation and should include an acknowledgement worded 'Courtesy of the National Pipe Archive' and quoting the relevant accession number.

(17)

LC.

1. Type 17W. Taunton Mus. c.1690-1720

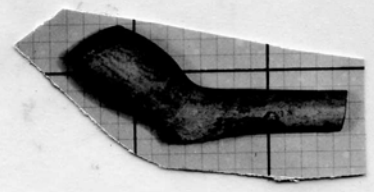
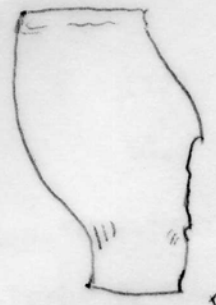
2. Type 4/6.N. Richmond, Yorks v. IC.

3. Type 3G. St Fagans Mus, Cardiff. Probably from London. c1600-30 ? incuse mark

4. Hartlepool Excav 1976

also L/c. 18th Cent. Chertsey

5. Banstable - Library Site (Higgins Survey)

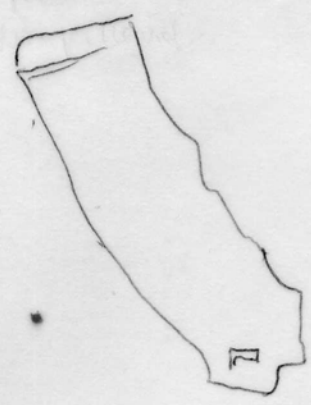


1"

1. 1
2. 1
3. 1
4. 1
also L/C
5 B



3



Hartlepool Exc. 1976

Hartlepool Exc 1976

1

4



2 Library Site Ravastyle

5

1. Type 15G. Rome-New York. M/C on spur, TD on back of bowl

11/17 - 2/18 Chatham High St. RFB c. 1680-1710 - Mary Cooper 1712-14

2. M.Charlton. Cowcross 1799(Holden's D.)

Queenhithe(Cheminant Coll)

3. Oxford Excav. Closing date of the group c1730. Polished buff white clay.

Like all - similar

Also. Type 22(London) Chatham High St. Pit 15. 1680-1710. ? Mary Cooper

London 1712-14. *was* is probably 3b from Queenhithe(Elkins Coll)

T.0482 861947

25/4/94

Dear Adrian,

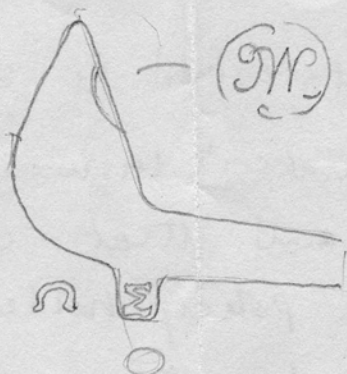
I was interested to see your article on Pipemakers' Insurance Policies in SCPR 41 and that John Mules was one of the policy holders. It jogged my mind back to 1985 when I was researching into 18th c makers in London and that I had info. on the Mule family. This has inspired me to write an article ~~of~~ on John and Hampstead Mules for the newsletter. I would be interested to see any HM spur marks 18th c London or IM of the same from Wapping area of Thames, if you have any. I have some myself but most of these are incomplete specimens.

I have received a pipe through the post via a foreshore walker at Chelsea. She was kind enough to let me keep it!

Taban

This is the mark:

Taban Coll
Forestre - Chelsea.



incuse

IW I think
(cursive letters?)

M/C maker on spur

Presumably the MC maker is Matthew Charlton.

The IW would seem to fit a number of
makers e.g. Mrs Jane Ward Davis Place
Chelsea 1847-62 (pipe found near Chelsea
I think). Have you seen this mark before?

Unfortunately I had already ~~bound~~ bound up
your catalogue and returned them to Liverpool
before receiving the pipe!

Hope you are keeping well.

All the Best

Colin

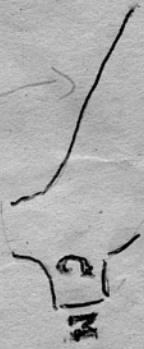


1

W. Charlton Success 1799
Queen-h. the - - - - - your BAR list

CHARLTON
CX

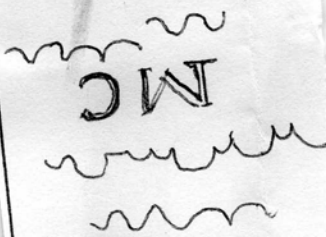
1799-1807
Cousaross.



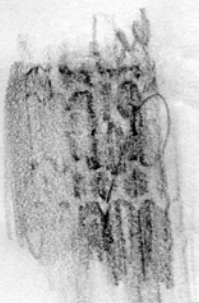
Increase stem mark
No 1

16

Elkins Coll
Queen-h. the



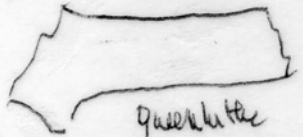
3b



Oxford type
mark.

W.C.

2



Queen-h. the
Petitritt coll
SCPR 31.P.19.

W.C.



London Type 22

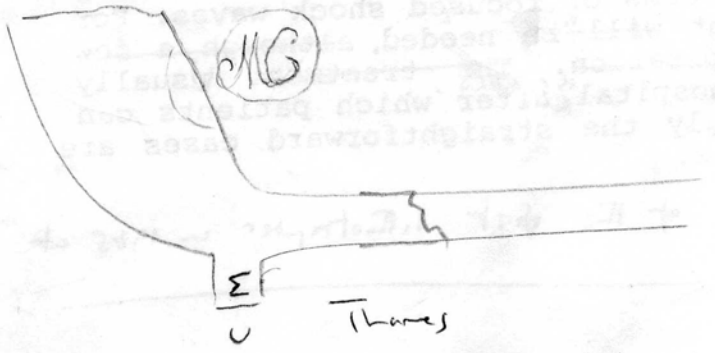
I Strabo Build Oxford Excavation
64. Butt white clay Colossus det of Corp 100-30

3

Type 22 L.

non-invasi
by means of
tment will
operatio
n hospita
singly th
basis.

... of

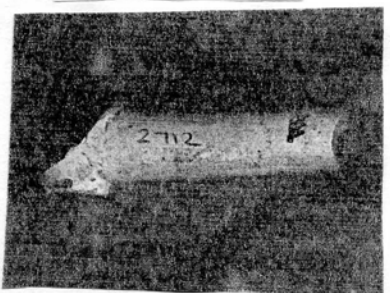
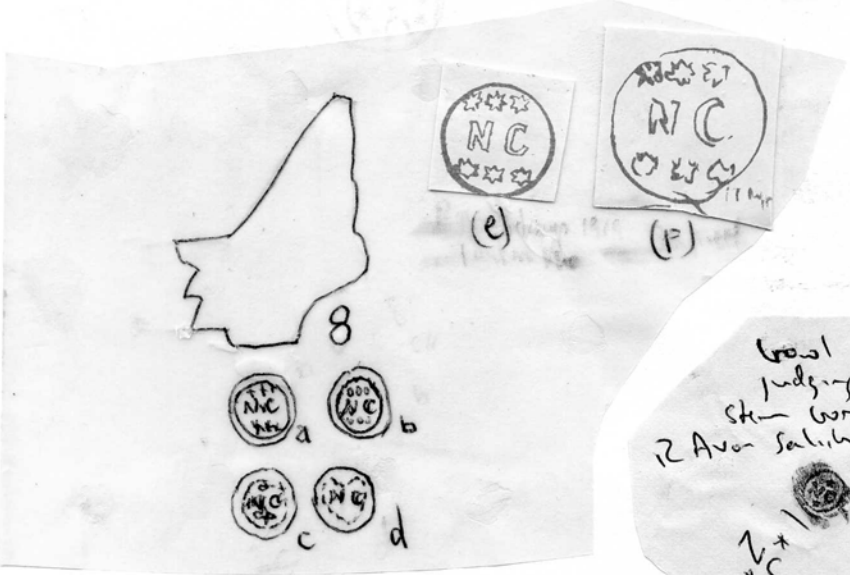
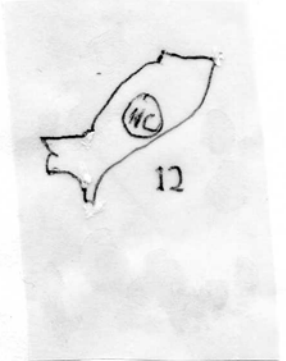
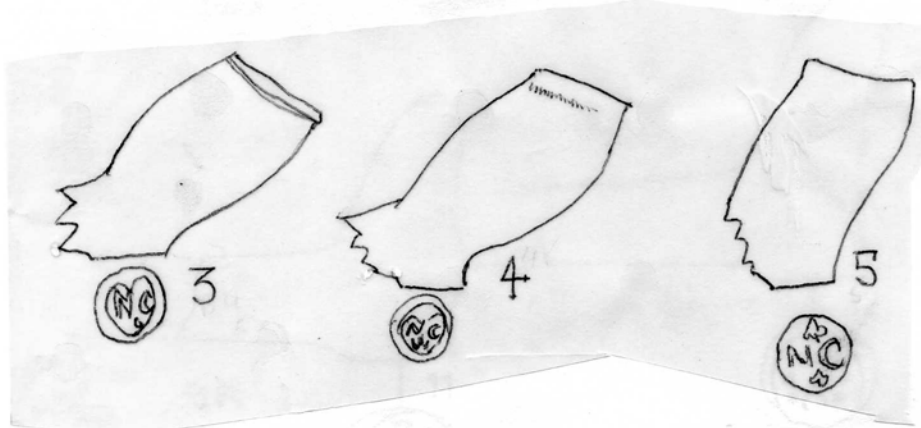
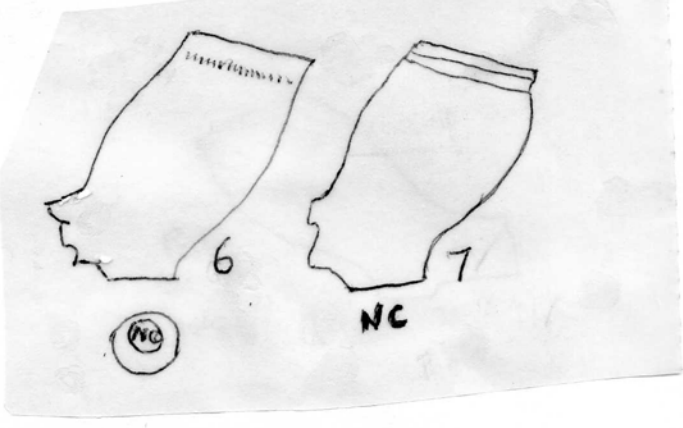
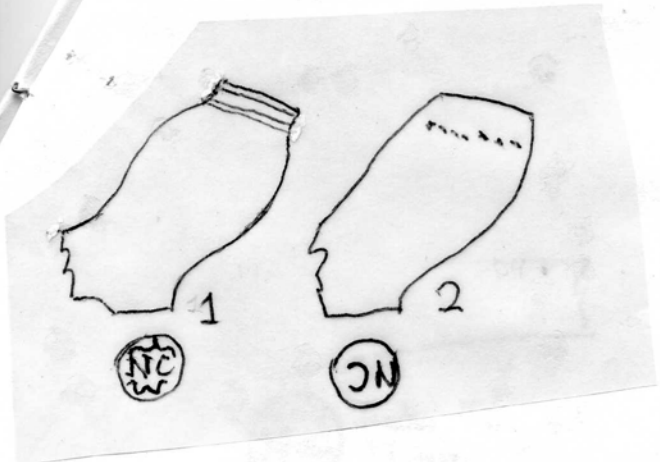


? Matthew Charlton Cow + St

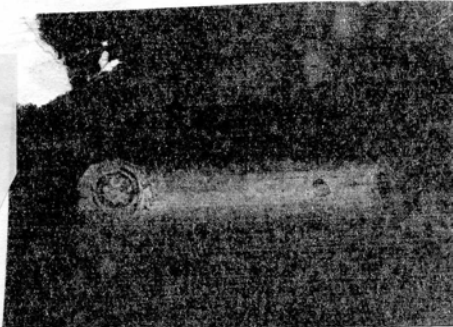
Handwritten notes on a small piece of paper, including the words "MC", "1000", and "10000".

NC

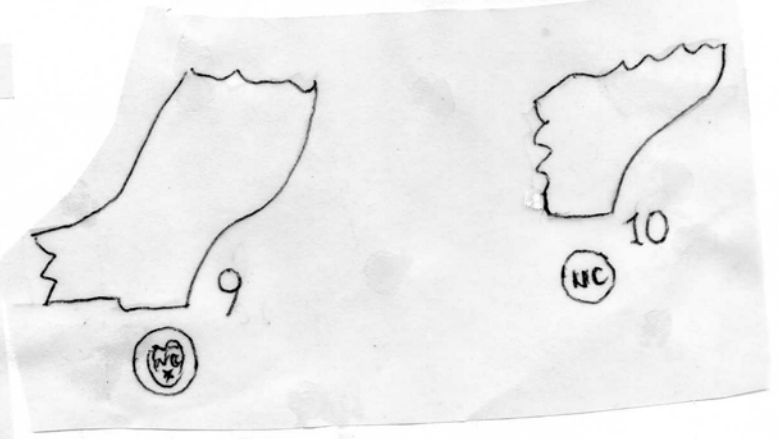
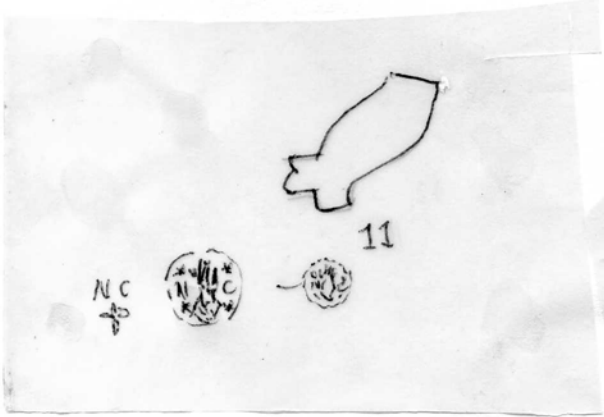
1. Type 2B. Gloucester Mus.
2. Type 4B. Wills Mus, Bristol
3. Type 4B. British Mus, 3 examples from Bristol
4. Type 3/4B. British Mus, from Bristol
5. Type 2B. British Mus, from Bristol, Pritchard Coll, No 106.
6. Type 7B. British Mus, from Bristol.
7. Type 4/7B. Bristol. (J & P)
8. Type 4S.
 - (a) 6 pointed stars, Taunton, Shaftesbury
 - (b) Shaftesbury.
 - (c) Shaftesbury and Dorchester ^uM_us from Oatlands, E. Orchard.
 - (d) Shaftesbury.
 - (e) and (f) Exeter Mus, (e) from Taunton, Rippons Cards (f) Binfield Coll. g Salisbury (Cheminant Coll. h Taunton Mus (Exeter type bowl
^{(6) K. Taunton reprk.}
9. Type 6S. Shaftesbury
- 10 Type 4S. Shaftesbury
- 11 Type 6S. From a pit group 1670-1700 at a cottage at Blandford. Dorchester Mus. $\frac{1}{2}$ Scale.
12. After T.P. Cooper in the Reliquary. Presumably Nathan Chilton, Bristol 1703-30 most likely maker for Nos 8-12



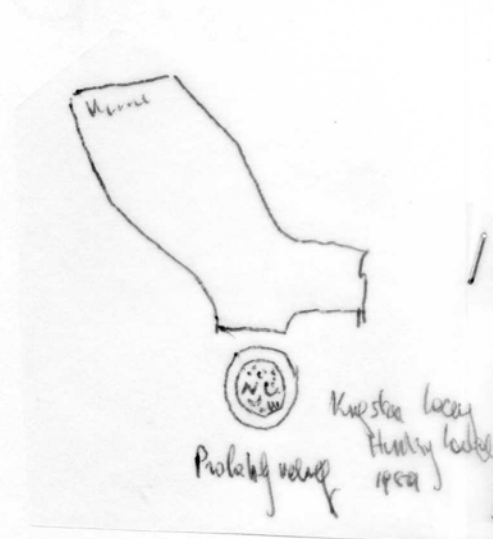
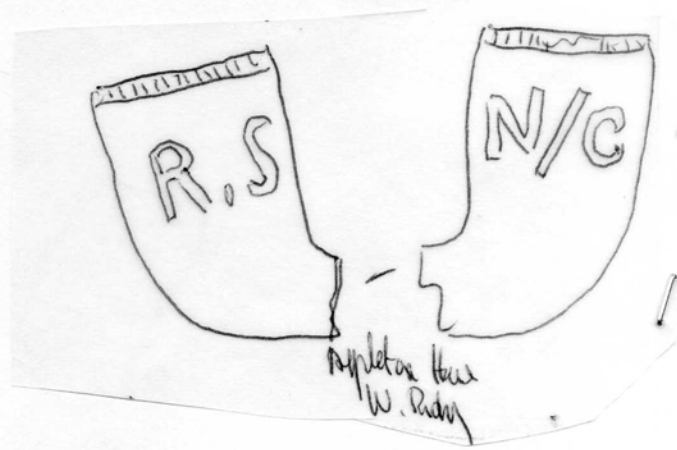
Wool c1630
Judging by
skin were found
in Area Salinity.
1+1
*C

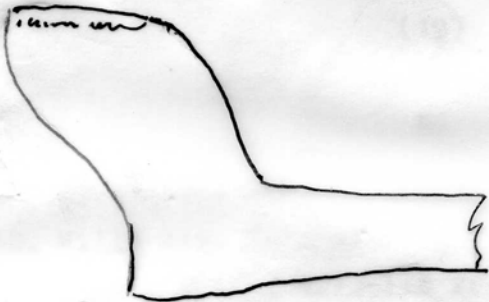


18g



Wool
at
18g





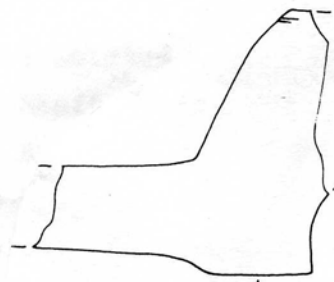
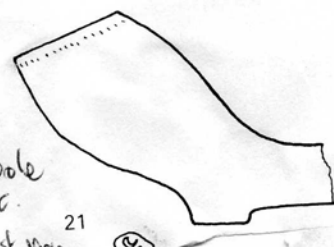
8h.



Toultan Mus. 8h.
'Irene

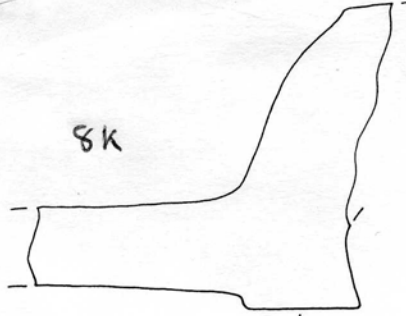
Irene

Poole
exc.
post 1990



8K

11



8K

12



Poole
exc.
post 1990



... pit group 1570-1700 ... & ...
... scale.
... Cooper in the Hallway. Presumably ...
... most likely maker for ...

NC marks are
in relief

See S. Lane - Research Thesis

(19)A

13. All Cork Excavations. Cork yielded some 50 examples of the N.C. Maker (relief marks) using the fleur de lis with initials in relief. c.1650-90

- a. Smooth white clay, burnished stem 7/64.
- b. " " 8/64.
- c. White unpolished. 8/64.
- d. Smooth greyish white. 7/64.
- e. Smooth white, heavily smoked. 7/64.
- f. Grey with some polish. 7/64.
- g. Smooth ^{wh}ite. 8/64.
- h Smooth white. 7/64
- i. Grey, semi polished.

Drawn by A.D from the
actual pipes

Others are from Lane
and marks are in relief
E 130 - 10488 also from Charlotte
Quay - Limerick.

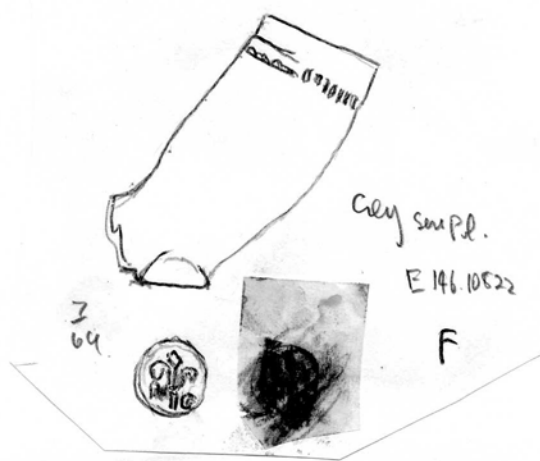
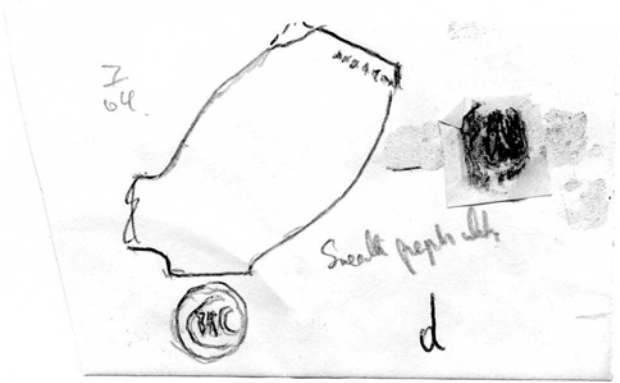
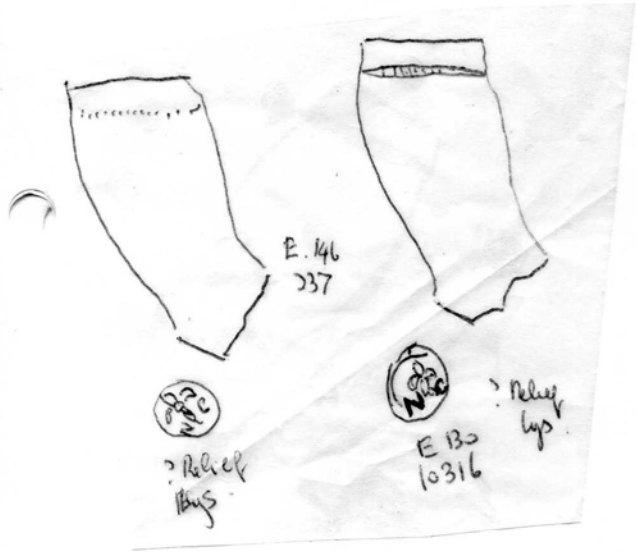
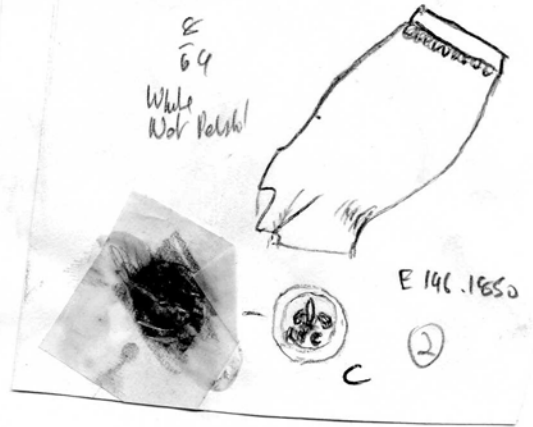
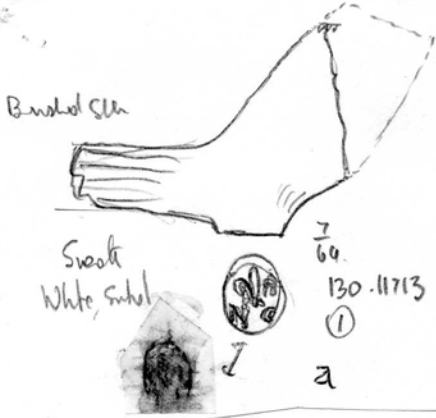
14. Duboye Castle, Co. Cork

Other examples of this maker from Lough Gur, Co. Limerick

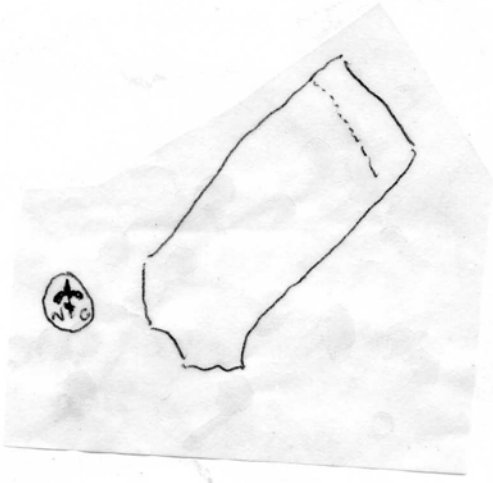
King John's Castle., Limerick City and Sullivan's Quay, Cork.

15. James Fort, Cork

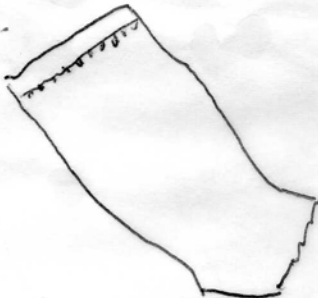
16 Glanworth Castle Co. Cork



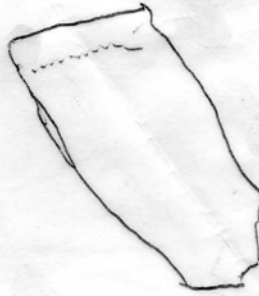
Cork. excavations.



Cork Frc.



E 146 979



E 130 10488

Charlottes
Quay
Inverch.

Cork yielded
nearly 50 examples
of the N.C. Mother
with flour de l'c
C 1650-80.
Also found, Lough Gur
& Inverch, King John's
Castle, Limerick City &
Sullivan's Quay Cork.

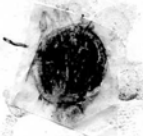
13



E.130.11572

A 9

white
Sash



Coy Sui Pabstl.

7
64



E 146.7113



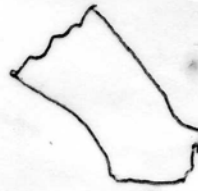
Cork. 13



146.10756

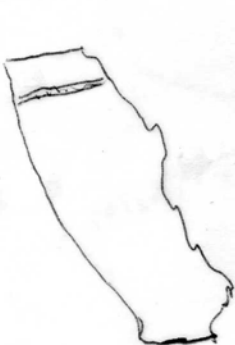
13

white
Sash

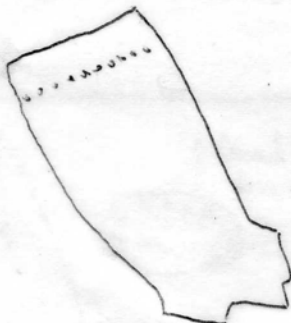


Dunhoye Castle
Co. Cork
c.1650-80.

14

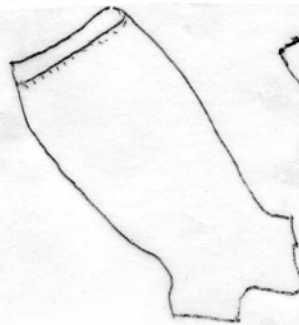


E 130 10679



K G

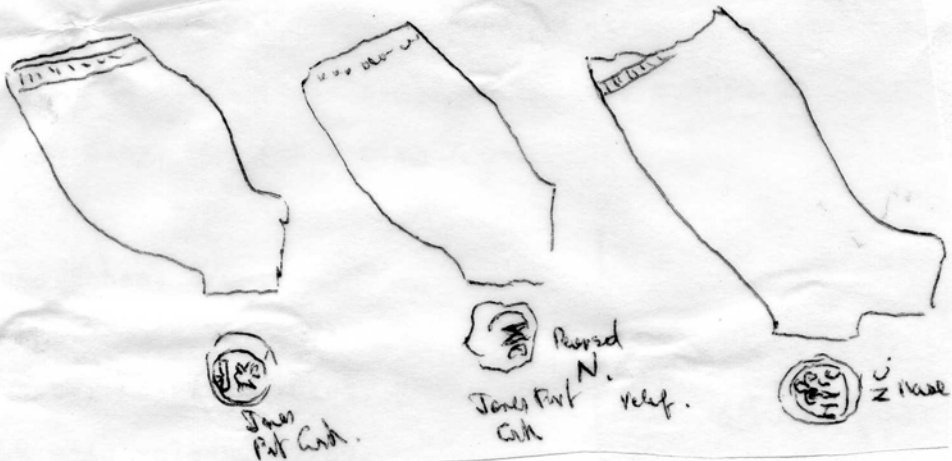
E 130 10568



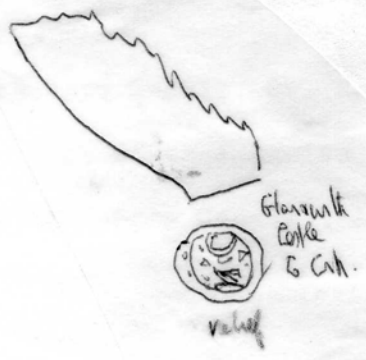
E 130 10364

All relief

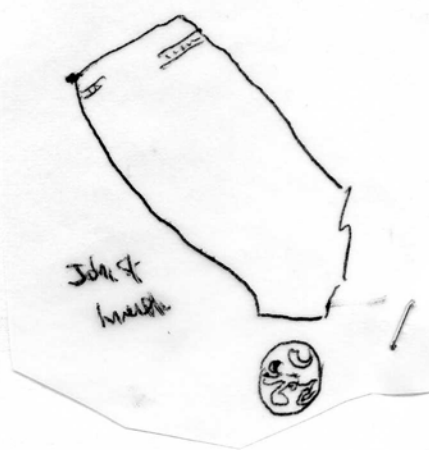
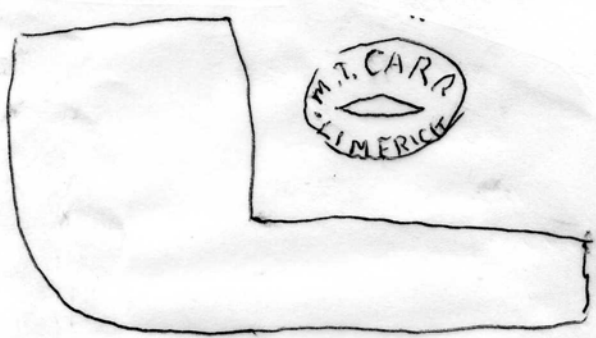
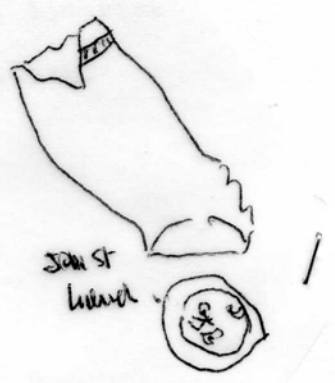
13



15



16



7 Broad Street
Lunch

CARD
NO. 5

John Carré Son 1876-1897.
7 George St
Tobacconist

(20)

OC

1. Type 3G. Chester Mus.
2. Type 10S. Wimborne Mus. St Mary's City, Maryland.
3. Oxford Excavations (cp M.C.)

Also O/C on spur 19th cent. Wheat designs front and rear. Winchester per
R.H.Cooper.

4. Atkinson Coll, Broseley.

3

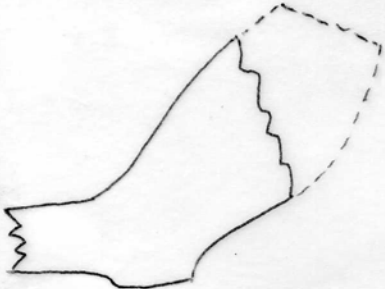


1

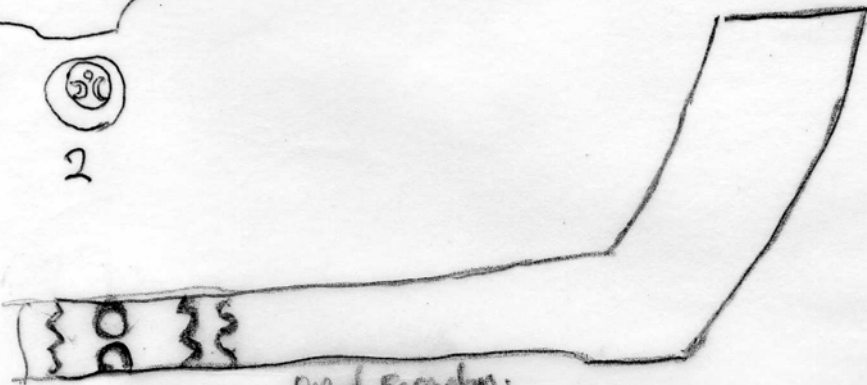


At the top Coll
Crawley

4



2



3

Open Recursion.
In In case v.H.C.

PC.

(21)

Patrick Crawford.

Edinburgh 1671-96.

Sheet 1. PC/E stamps.

Sheet 2 Castle stamps on base.

Sheet 3 Fort St Andrew Darien

Sheet 4. P/C stamps.



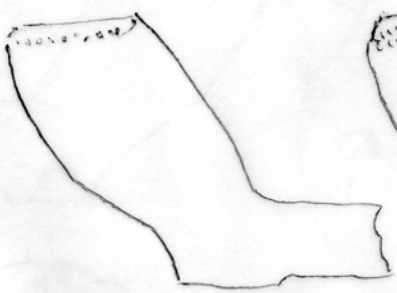
Riding Boots



Edinburgh High St 1611-9.
Edinburgh High St



Bunhill 6/64

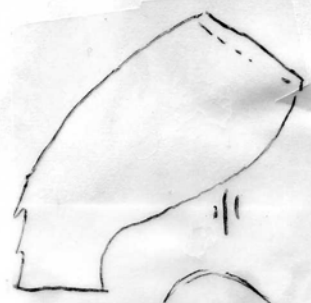


Bunhill 6/64



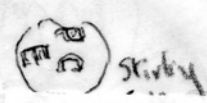
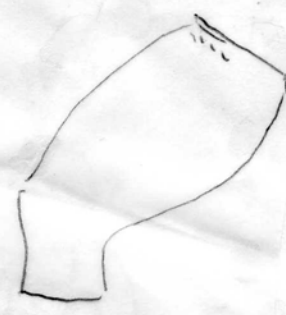
Bunhill 8/64

Edinburgh Fir. S. High St
P.S.A.S. 107. 1975/76



SCPB 2-1
Patrick Crawford
Edinburgh 1671-1676

Edinburgh High St.



Stirling Castle

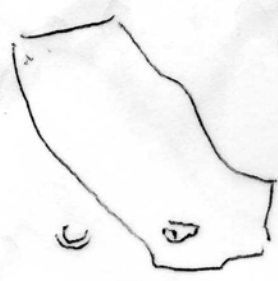


Edinburgh High St.



Patrick Crawford
Kelso
1670-90
1675

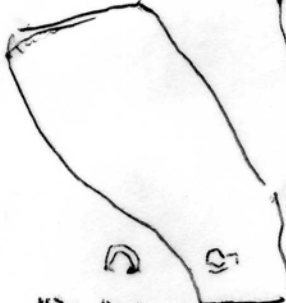
Kelso c 1675.



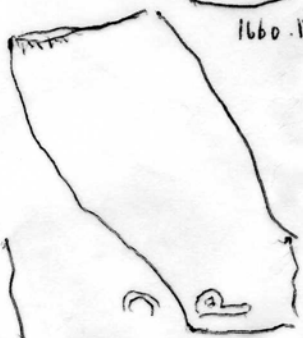
1670-90



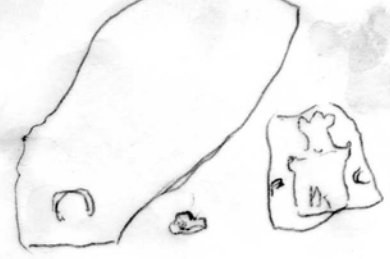
1660-1700



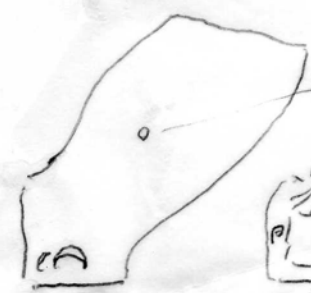
1670-1700



1670-1700



Edinburgh Castle



Other side



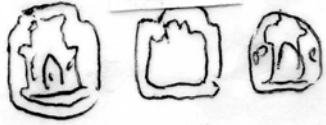
Stirling Castle

Patrick Crawford Kelso.
Main Steps

6. different sides of G. the Stairs



Kelso.



P.S.A.S
Edinburgh High St



Stirling Castle
Patrick Crawford 1671-92

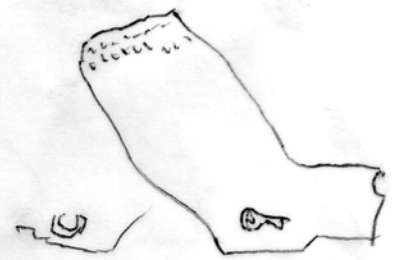


Stirling Castle,

From Payne & Tolago



Balgonie Castle



Bunshel

6
64.

P. Gellie

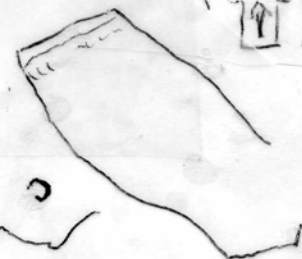
Edinburgh Castle.



Edinburgh High St.

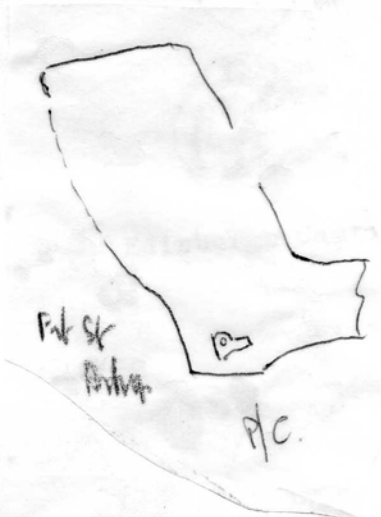
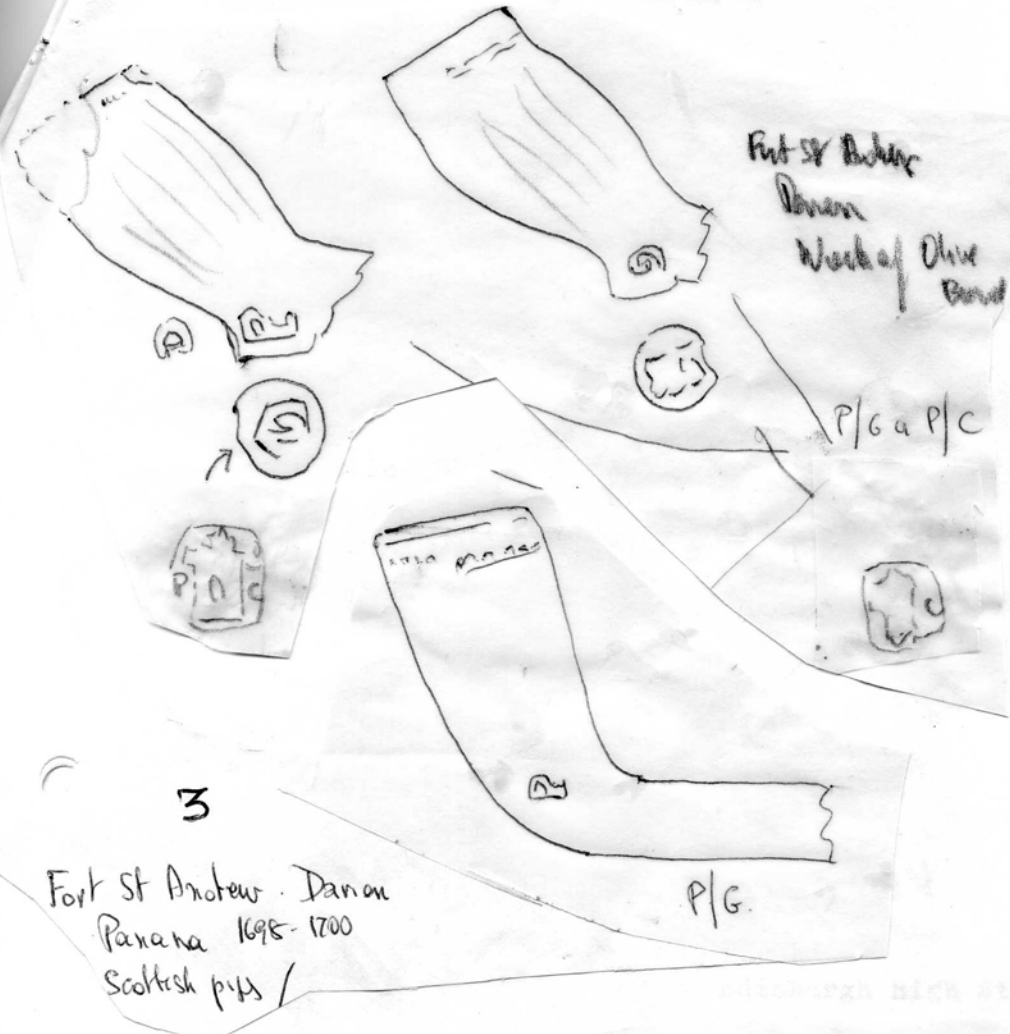


Edinburgh Castle



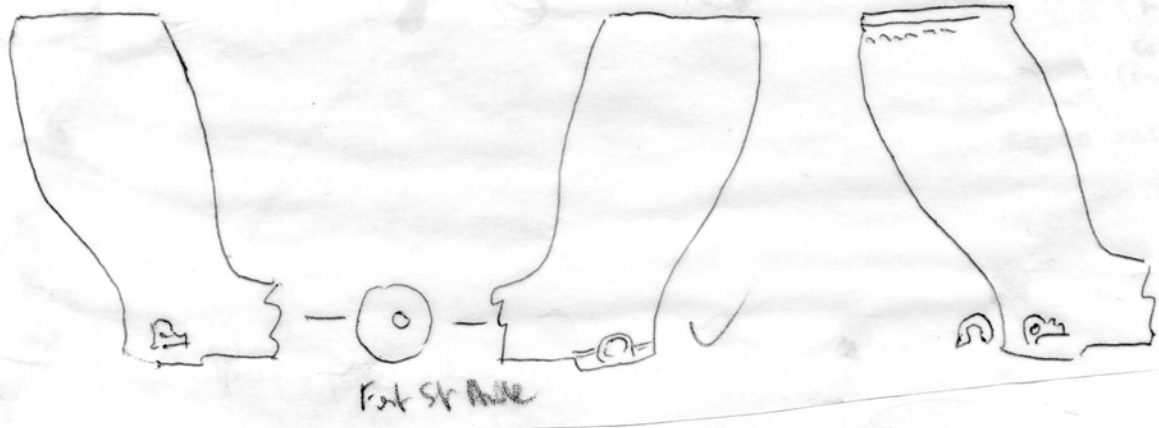
Bunshel 7
64

Edinburgh Castle



3

Fort St Andrew - Darien
Panama 1698-1700
Scottish pips /



All Fort St Andrew Darien

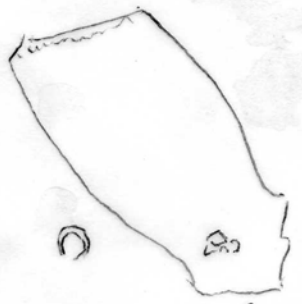


Stirling Castle



Patrick Crawford
Edinburgh 1671-96

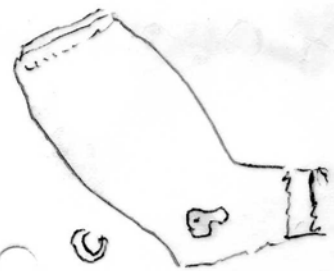
Balgonie Castle.



Peak P.
Partially buried 6/64

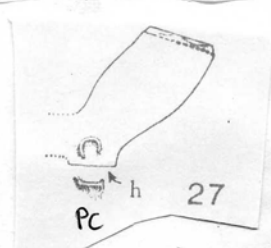


Edinburgh Castle



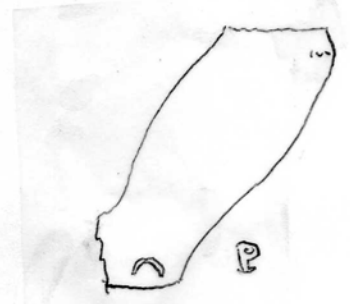
2
64. Edinburgh Castle
M. D. Collyer

Edinburgh Castle.



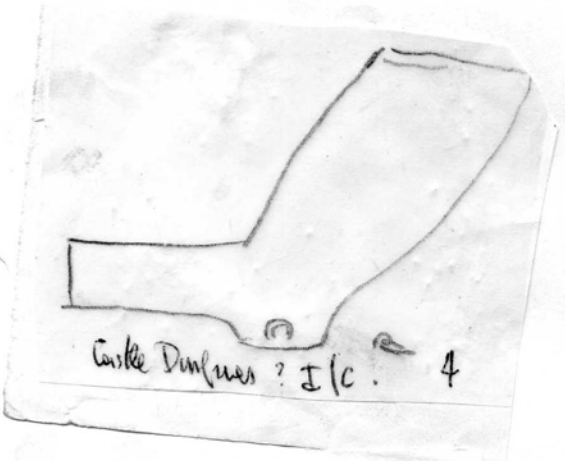
Edinburgh High St

Edinburgh High St.



Cramond
Roman Baths

Roman Baths Cramond.



Castle Dumries ? I/c. 4

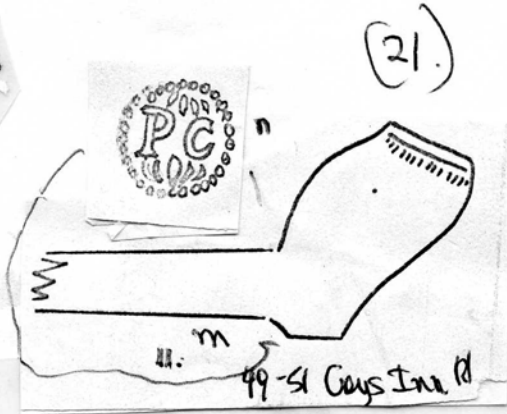
Dumries Castle.

pc

(21)A

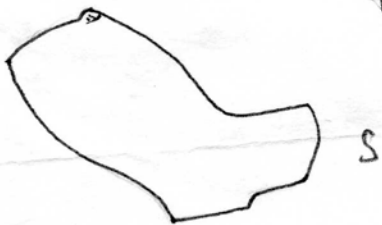
1. Perhaps Peter Cornish . London. 1634. Charter.

- a. London. Polished. Mus Lond.
- b. London. Mus. Lond. Marshalsea.
- c. " " . Photo, St Fagan's Mus, from London.
- d. " "
- e. Stoney Stratford (Photo)
- f. Exeter Mus (Binfield Coll)
- g. Oxford Excav. Polished.
- h. Temple Gardens, London, Brit. Mus. Jewel Tower Excav. Westminster.
- i. Cirencester.
- k. Queenhithe (Cheminant Coll)
- l. " " (Elkins Coll)
- n & m. Grays Inn Rd.
- o. Queenhithe, Elkins Coll
- p. Binfield Coll, Exeter Mus.
- q. Queenhithe, Elkins Coll
- r. Queenhithe, Cheminant Coll
- s. Waterloo. (Tatman Coll)
- t. Dublin Castle



1

Tatnen Coll

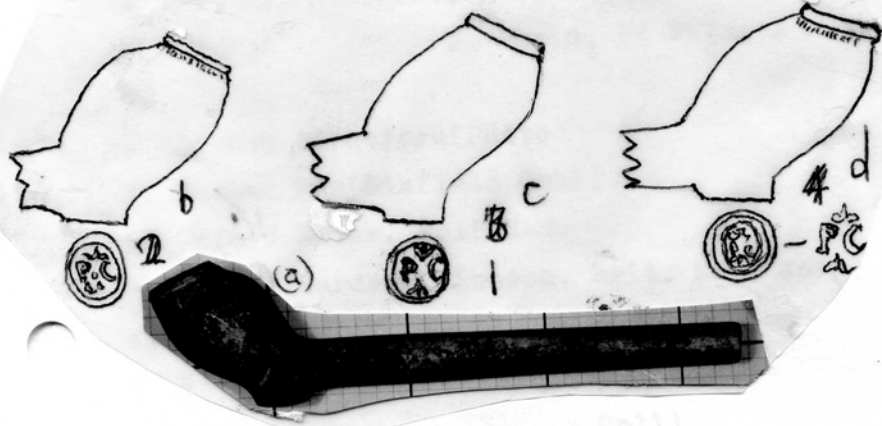


Nakuloo

In Relief



← 1 / 1 1/2

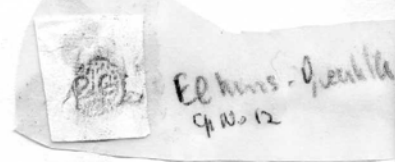


3(a)

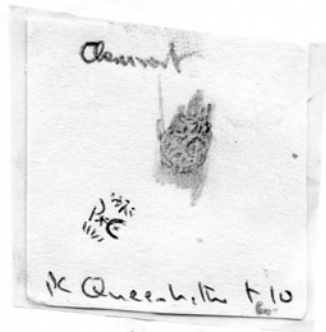
e



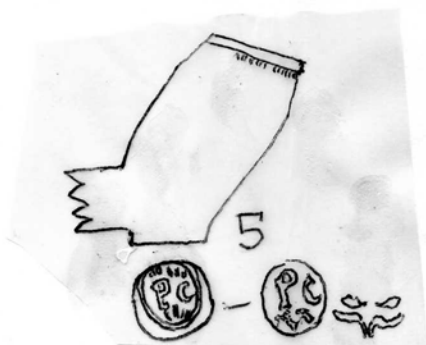
f



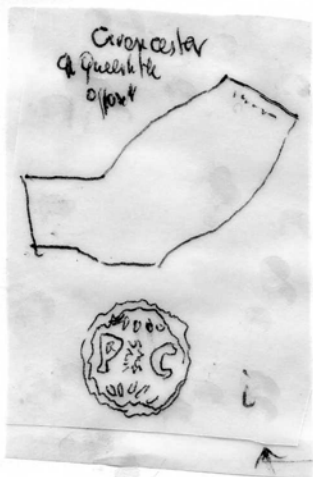
9



k R



h



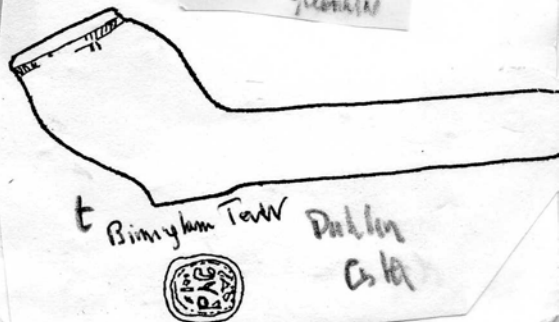
i



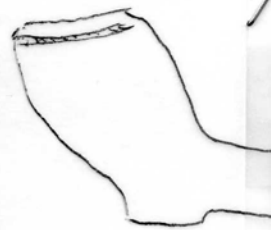
k



l



CSA



Dublin Castle
Bishop's Tower
& pointed tower
between
photo

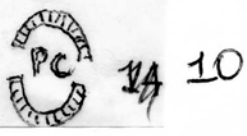
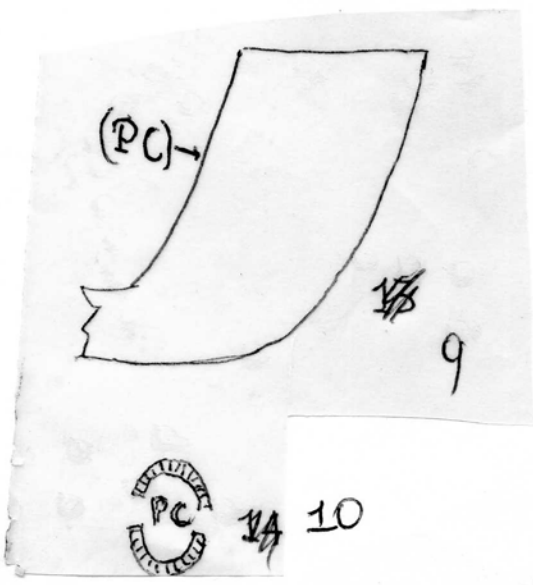
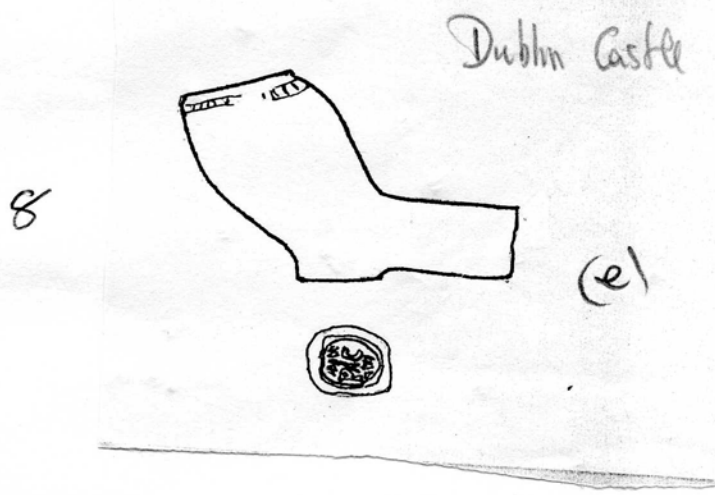
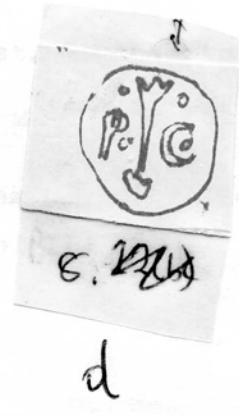
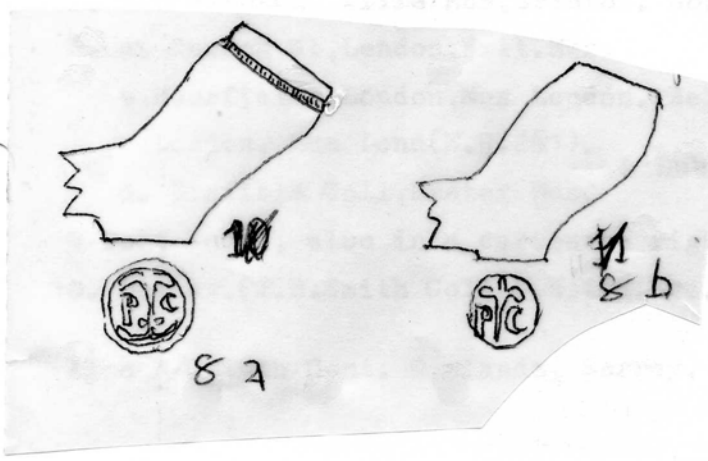
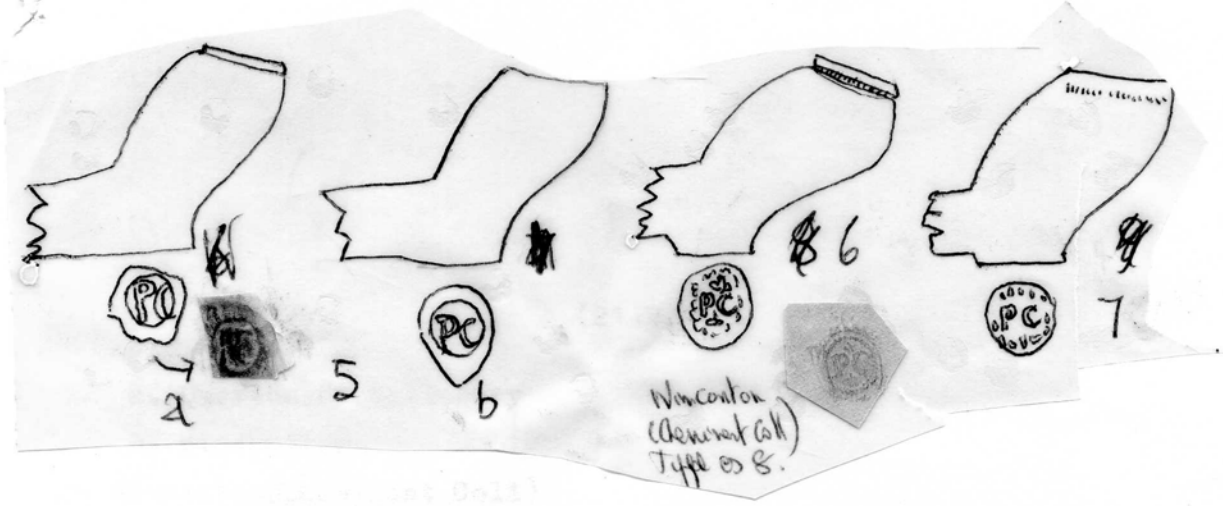
PC.

(21)B.

5. a. Overton, Nr Salisbury
b. Winchester.
6. Wincanton (Cheminant Coll)
7. Southampton, Wills Mus, Bristol. Southampton Excav also.
8. a. Cannon St, London, Brit. Mus.
b. Moorfields, London, Mus London. Belfast. Southampton in a group c.1710.
c. London, Mus Lond (E.R.261)
e Dublin Castle
d. Binfield Coll, Exeter Mus.
9. Port Royal, also in a cartouche right hand side of bowl. c.1750
10. Dorset. (J.B. Smith Coll (D.N.A.H. Soc. vol II))

Also P/C 19th Cent. Oatlands, Surrey.

(21) B.



(22)

RC

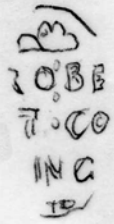
1. Robert Colling. Gateshead. 1720-21. a and b. Hartlepool Excavations.
Others per L. Edwards 2;1.

(22)A.

2. ~~a~~ Perhaps Robert Chapman. Hull 1781r- c1740?
a Hull Museum . b. Postongate, Hull. cBlackfriar Gate Hull.
3. Denbigh Castle excavations closing 1644. Also Chester Mus.
4. Pipe Aston, Hereford(Kiln). b. London, Cheminat Coll (B.A.R. VI 65)
c. Customs House foreshore. Tatman Coll.

(22)B.

5. Tower Bridge, London (Tatman Coll) c1600-20 5b. *Clement Coll, Queenhithe*
6. ~~XXXXXXXXXXXXXXXXXXXX~~. a and b. Martins Hundred, Virginia. B.A.R.II.
a Site A. Pit 1. c 1620-50. b. Pit 9. 1630-60.
c. James River Knowles Coll(rubbing from Plaster cast. d. Queenhithe
(Cheminat Coll.
- 7 Stanley Rd. Chiswick(CrowleyColl



Hartlepool Rec 1976 2:1
Robert Colling - Gateshead 2
1700-21 1

b

2. Roberts

Robert

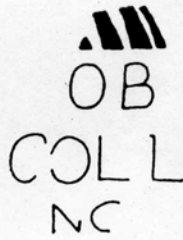


e How R went back

1



2



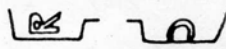
3



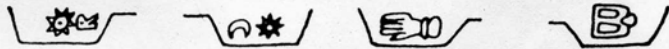
4



5



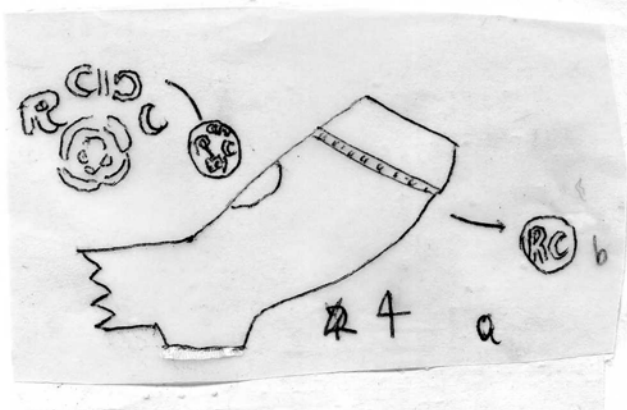
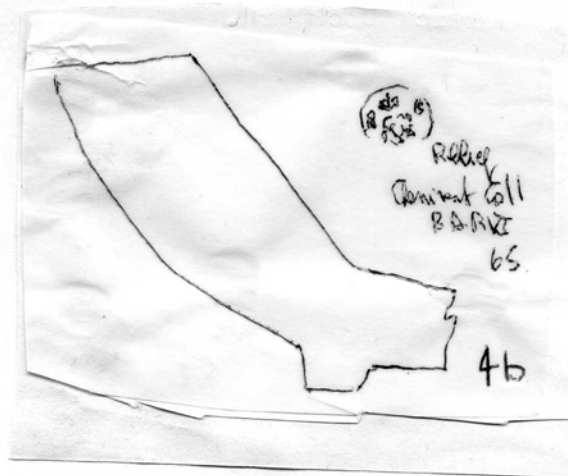
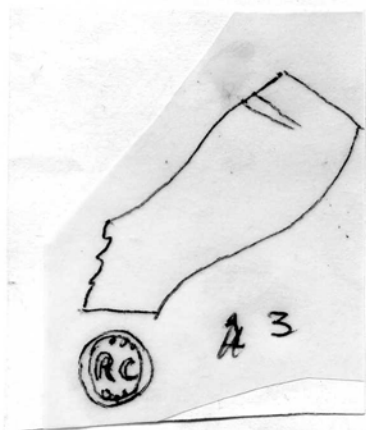
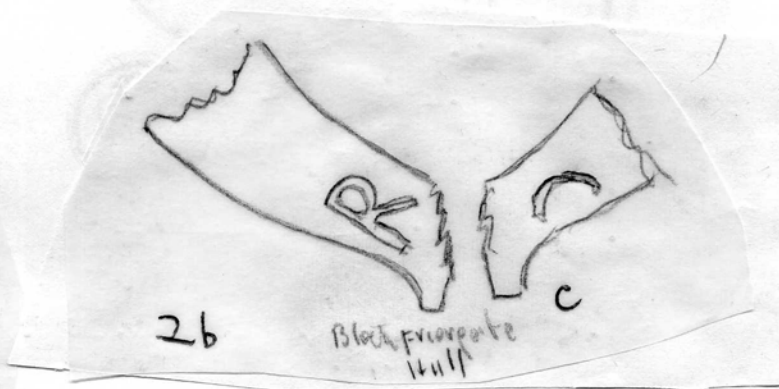
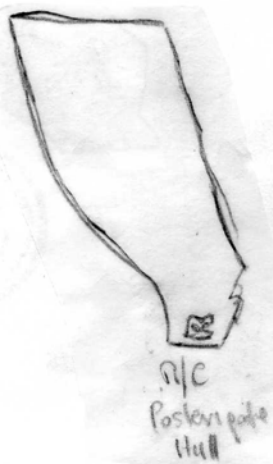
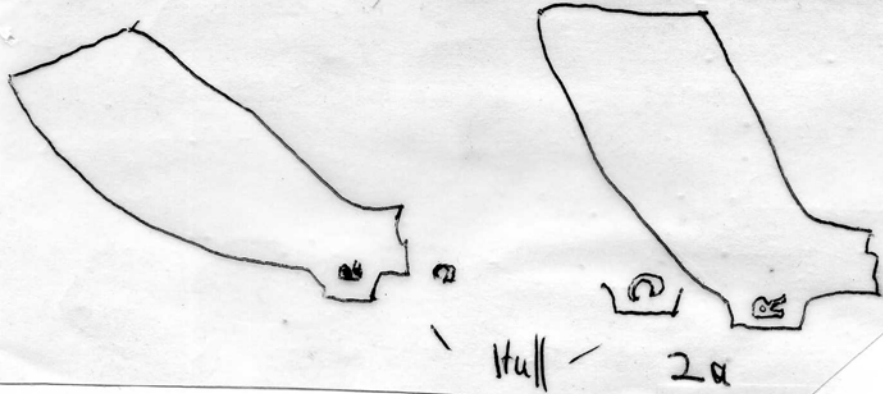
6



7

8

22A.



(22) C

RC

8. Pauls Pier Wharf, London (Cheminant Coll) .? Richard Cole
1742-1800. Golden Lane, Whitecross. St.
- 9 All Kingston. v.B.A.R.VI (Higgins)
10. All Reigate " (22)D b. 2 examples. g. Trade and Agriculture.
11. Dorking, Micham and Newdigate (B.A.R.VI)
12. Willey Park Farm. Caterham. From behind a hearth. Robert Grey
1787-68 Croydon suggested. Complete length 15 1/8 ". B.A.R.VI
- 13 South Godstoen Surrey. B.A.R.VI
14. Brock Lane, Surrey. Croydon. Hockbridge, Mitcham, Reigate
? Robert Corney Croydon 1835-1902
- 15 Croydon. c 1730-50. B.A.R.VI.

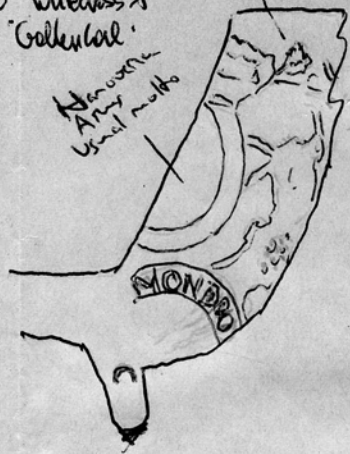


Very backward-leaning
lion + unicorn
Very shaggy lion

? Richard Cole
1742-1800 Wilecross St
'Goldenrod'

Indelible
Furster

Stone box
2 1/2 m
Oakman
Coll



Demont Coll

Front
View

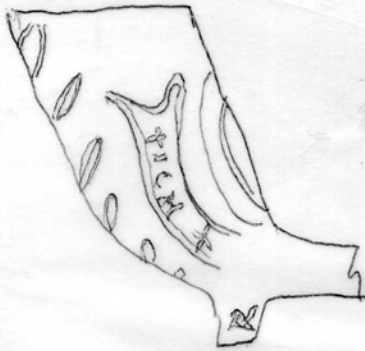


Branches,
leaves etc

branches of
grape,

Pants Pier

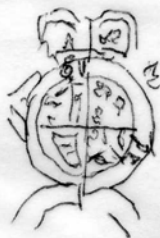
9 8



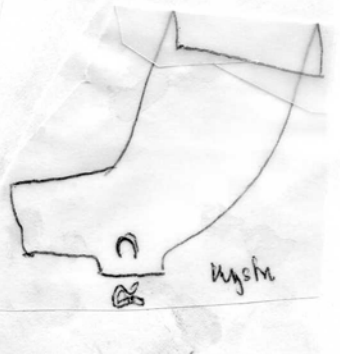
Kingston



Kingston



Kingston
B.A.R.V.I



Kingston

10 9

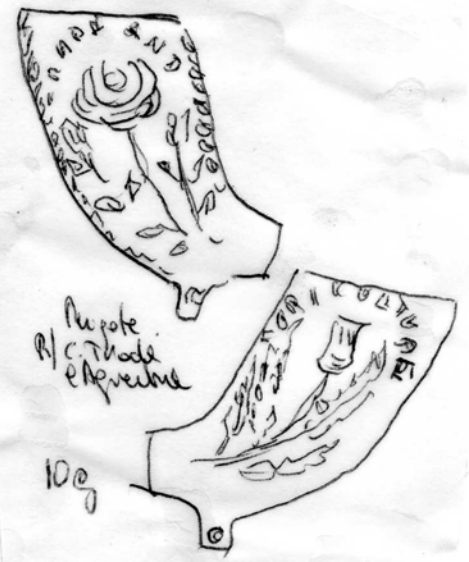
~~13~~



R/c
Brookham
Surrey
Croydon

14

Relat Corry li.
Hochbridge
Mildom
Reigate.



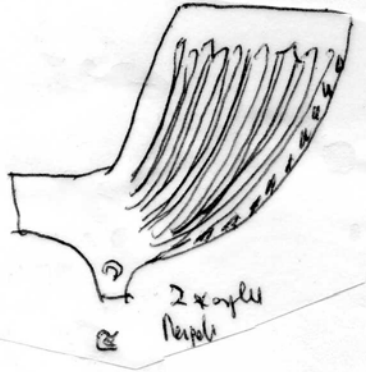
R/c
Thade
Perevalle

10g



R/c
Purpote

10a



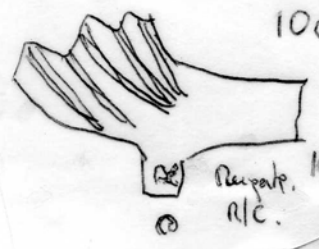
2 x rays
Purpote

10b



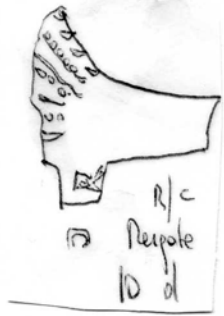
R/c
Purpote

10c



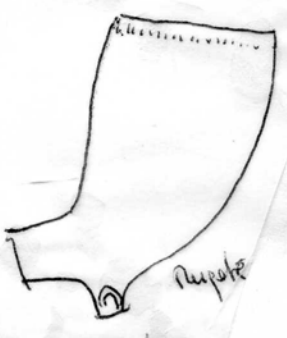
Purpote
R/c.

10e



R/c
Purpote

10d



Purpote

R/c
10f

W. Key Port A Form
Caterham
see below or back
Probably Relat Corry 1787-85
Croydon

15 1/2" long
straight stem
BART

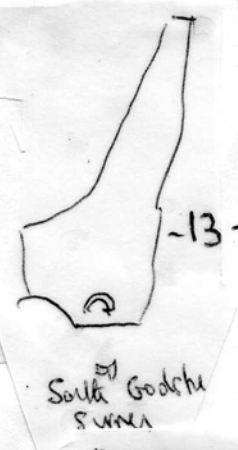
12

Surrey. BART

Many R/c at Banstead
Croydon

18 cut - Galton
15 cut

~~13~~



South Godtha
Surrey

-13-



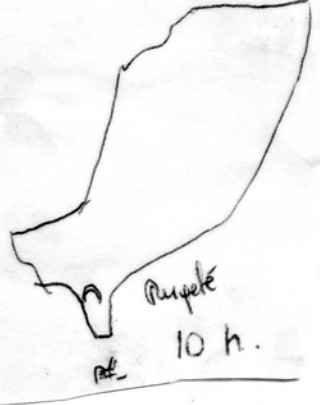
R/c
Sullt
Godstone Surrey



Gulster

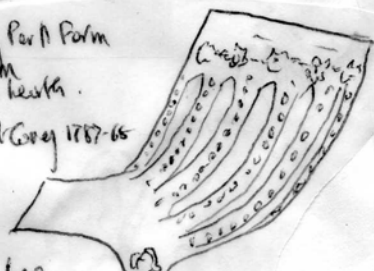
R/c
10i

15



Purpote

R/c
10h.



12

R/c
Dorset

11

Mildom
Newpate

R/c Armorial. - Weybridge

(22)E.

16
17. Perhaps R.Chapple 1866-73 Newton Abbott.

a-d. All Exeter Excav. a. Reddish Clay. 5/64. b-d 7/64.

Also.

R/C crowned on types 9-11G from London. M s Lond and Thames (gren Coll)
Winchester. On type 15G. Nonesuch Palace. ^{Stanley Rd, Church of Exeter, Gren Coll}

RC on stem, Jamestown Ice Pit 1625-75.

Type 15S on stem RO/CAR/PENTER/BATH (196 stems and 1 base from Bath)
and at Chippenham. (Dorset and Som N & Q)
and RO/CARPE/INTER/BATH (per N. Lewson)
RC/BATH

R
X
O
Q

Bath
Base

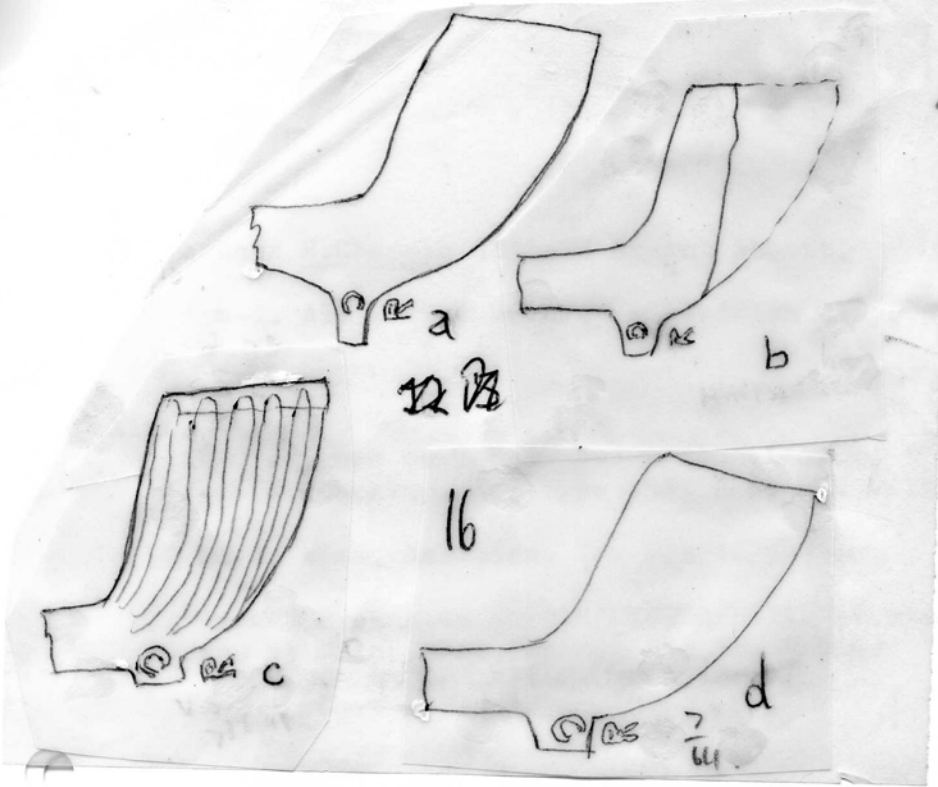
See Mowles letter

G or Q.

? X = Grosset Paper.

or ? RO. Computer.

(22) E



RC
BATH

Stem.
166 examples

1699-1737

RO
CARPE
NTER
BATH

Stem
1152 examples
Booze 24 examples

Per. M. Lewan

17. Salisbury, 2 examples, polished.

18. Handel House, Dorchester in a group 1590-1620.

19. Richard Cutts c.1700-40. N.Hants area. Stem marks 2 dies.

Winchester(2 examples). Southampton, Marlborough, Highworth(Wilts), Bath (3)
Deptford(per Mrs Birchenough). Norwell(Good Shepherd Church). Battersea
Park.

20, 21 perhaps Robert Cole, Newport I of Wight c. 1840-80

20 Lymington.

21. Wimborne Mus.

22. Bristol type of marking.

a Port Royal, St Mary's City, Maryland.

b. Port Royal(Marx). Mayes excav, level 5.

c. Port Royal "

d. Bristol(J&P) Port Royal "

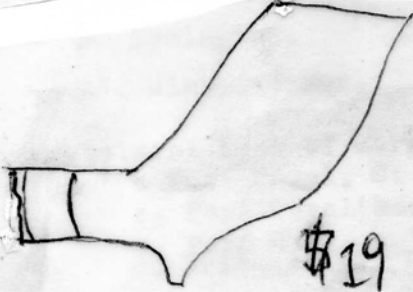
~~22~~ (22)F



\$17

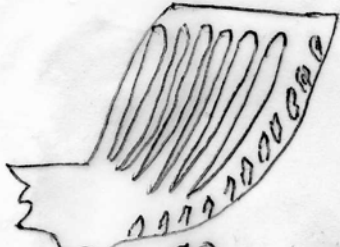


A18



RICH
MURD
CVTTS
RICH
MURD
CVTTS

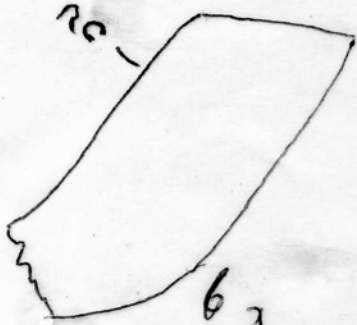
\$19



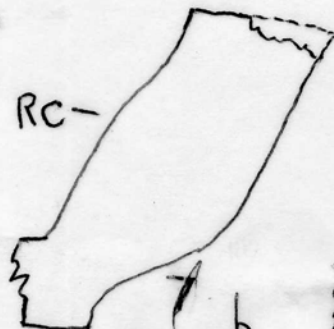
CR 10



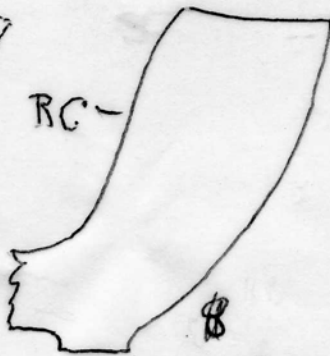
11



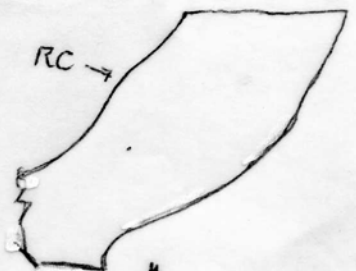
6 a



7 b



8 c

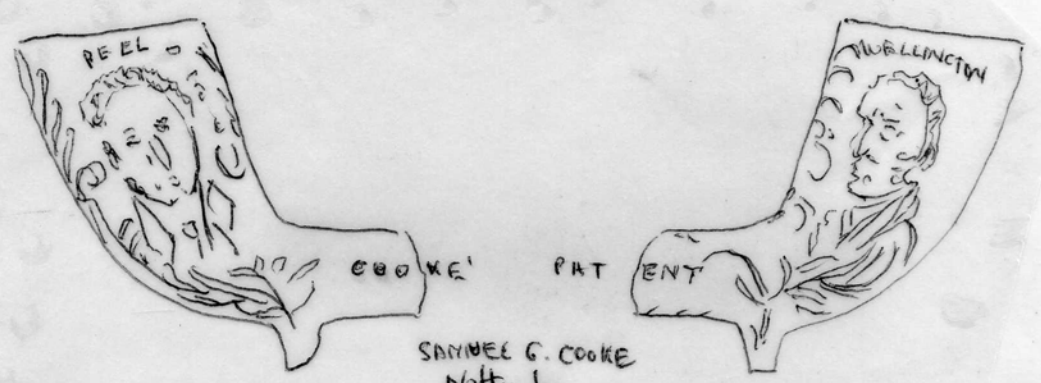
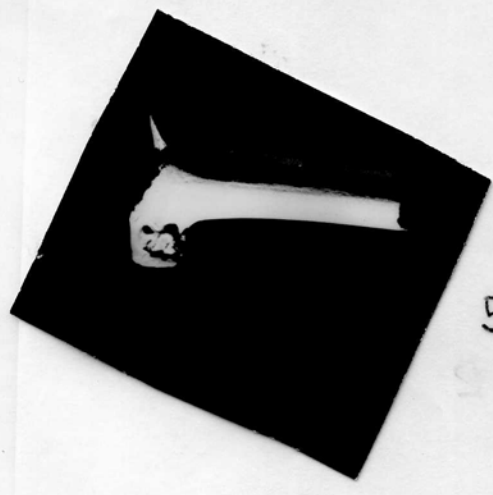
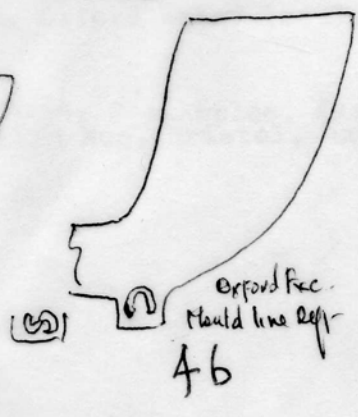
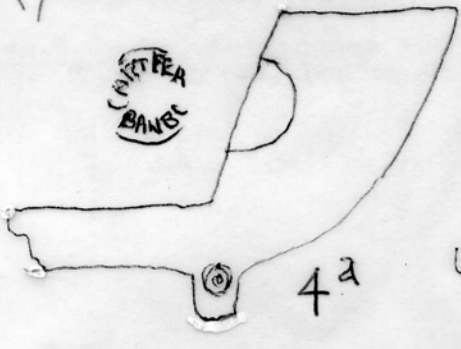
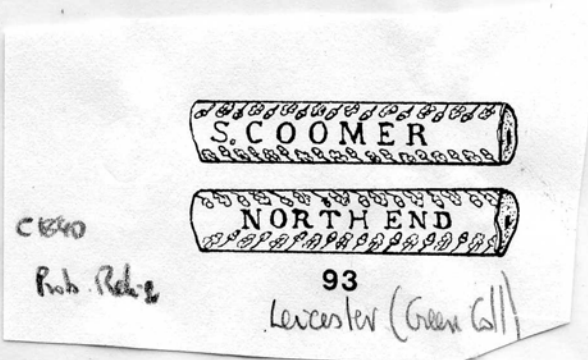
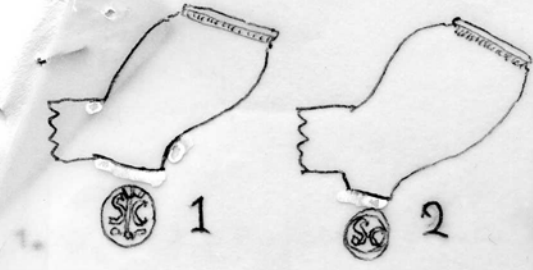


9 d

SC

1. Type 3G . Barbican, G.H.M. London Mus. Golden Lane Estate, L.C.C.
2. Type 4G. London. G.H.M. Polished.
3. Type 3By. Broseley, Thursfield Coll. British Mus.
4. Samuel Carter 1857-75. ^Banbury, Oxon.
 - a. Warwick Factory.
 - b. Oxford Excav (mould line left)
5. St Ebbes Oxford. (Photo)
6. Sam. G. Cooke, Nottingham 1855-64. 2 examples, (Hammond Coll)
Type 10/11G. London, Wills Mus, Bristol, Harris Coll.

see II John Jarnon



SAMUEL G. COOKE
Nottingham
1855-64 (D)
2 samples
P. Hamnd.

6

1. a. Hull Sheppard No.8.

b Hull v. B.A.R.I.

2 Hull. B.A.R.1.

3. a. Hull Excav

b. " B.A.R.1.

c and d. B.A.R.1.

e. London, Tower Pier, Tolman Coll (24) A.

4. A Lincolnshire maker.

a. Boston(12 examples), Algarkirk, Wrangle, Old Leakem Leverton, Fishtoft, Sibsey,

b . Wrangle.

c. Caister.

5. Perhaps Thomas Crew^{db} 1716. Nottingham 1694 F

a,b, and c, All Barker Gate burial ground.

6. Thomas Cuthbert (1) or (2) Gainsborough 1834-69.

a.and c. abplition of slavery. a Gainsborough. c. Stamford. Wm Edmunds Kim Wash Newert.

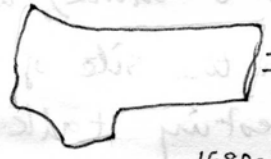
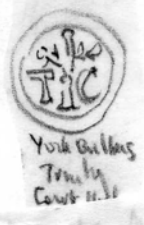
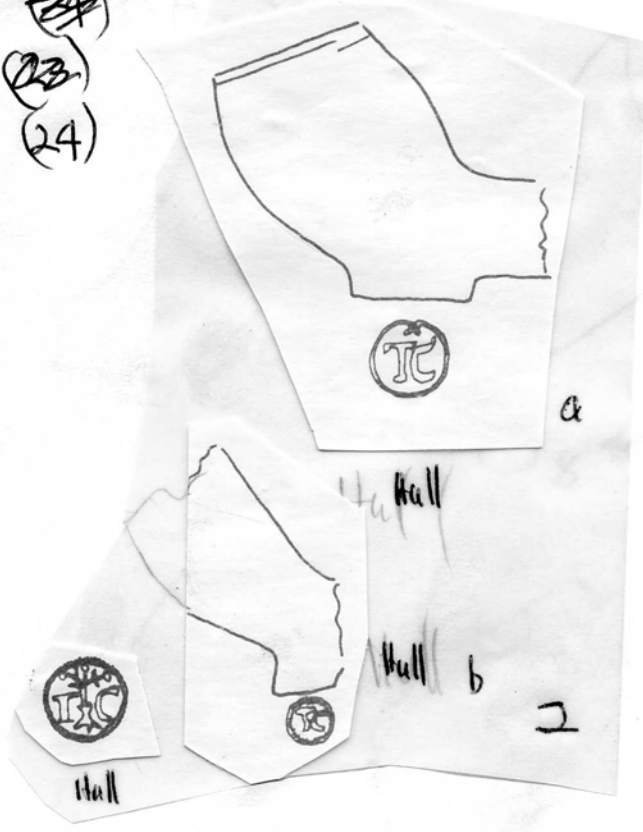
b. Gainsborough town arms? with Indian supporter. Gainsborough.

7. Thomas Cleever Cambridge 1839. Cambridge.

8. Harleston, Norfolk, (Day Coll



~~24~~
23
24



= 2.75 mm.

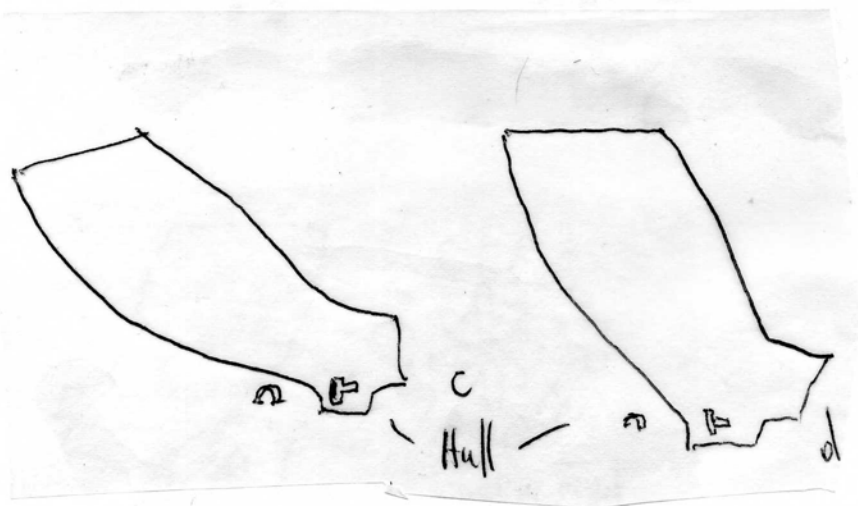
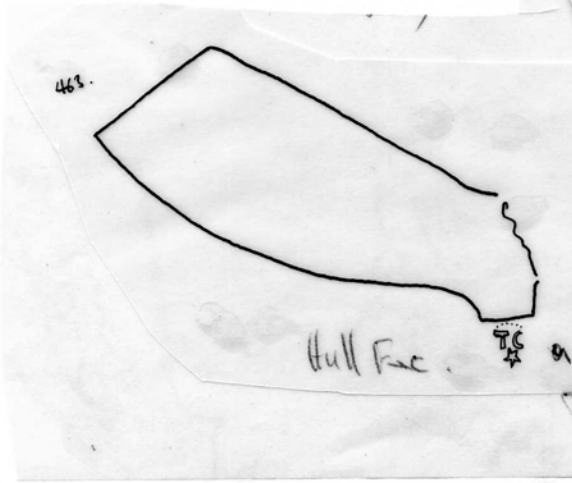
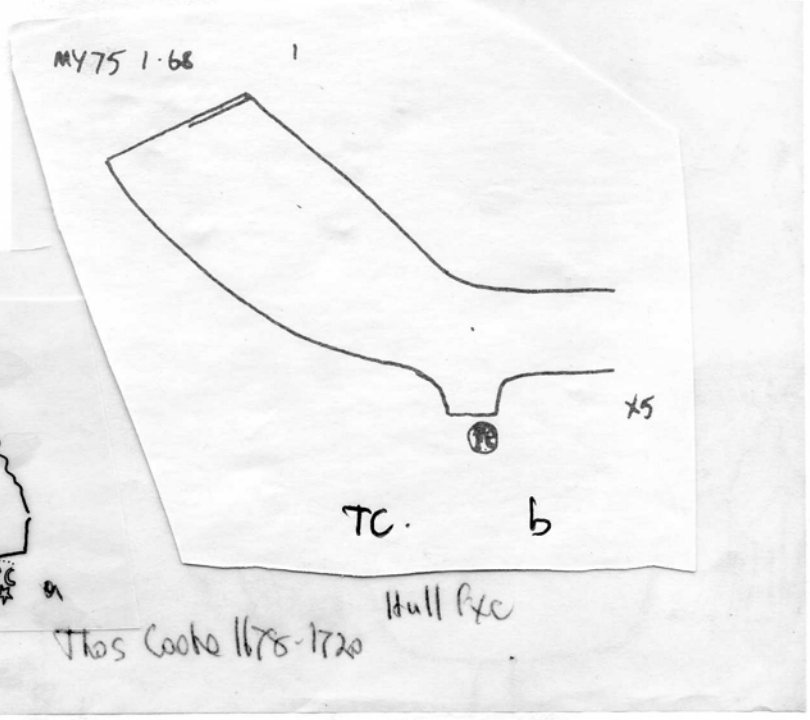
1680-1710 type bowl.

TC relief



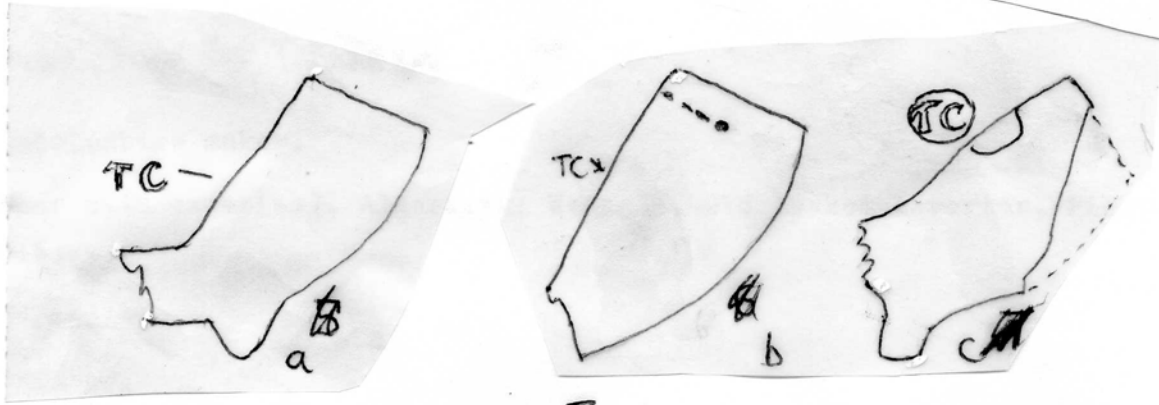
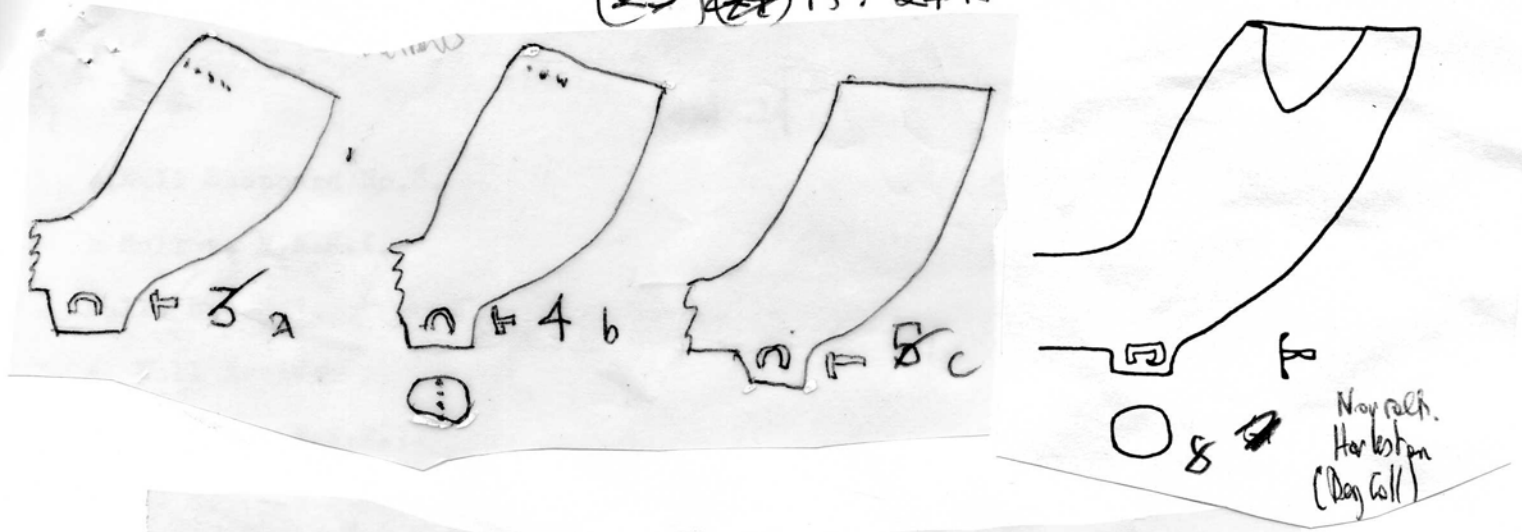
3e Tatman Coll

Tower Pier.
31.7.85.

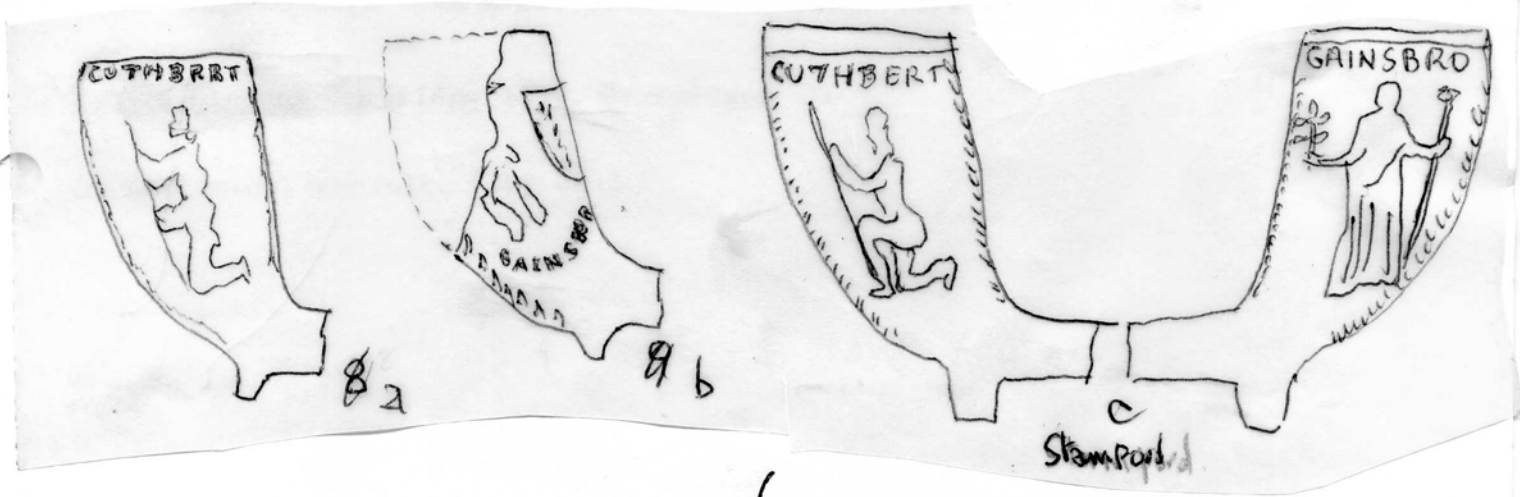


3

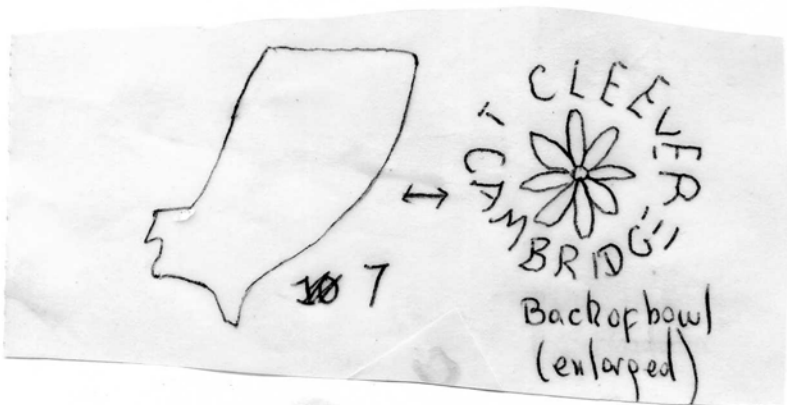
(23) ~~(24)~~ A. 24A



5



6

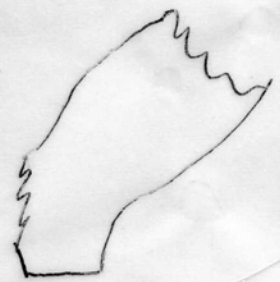
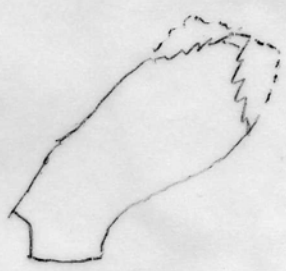
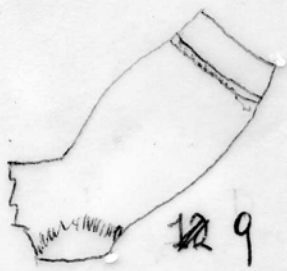
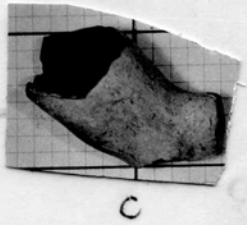


24 ~~23~~ (B)
(25)

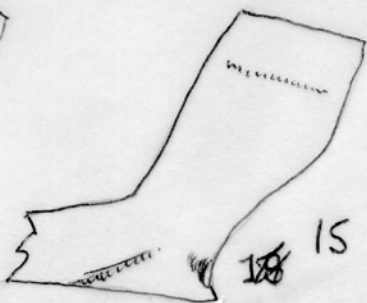
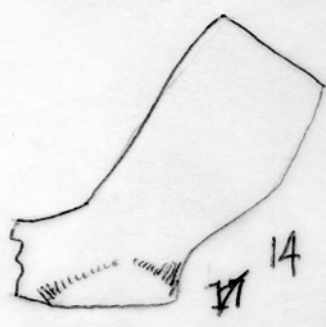
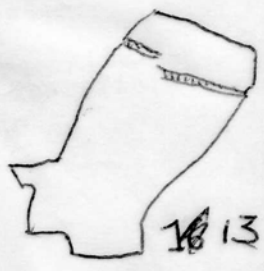
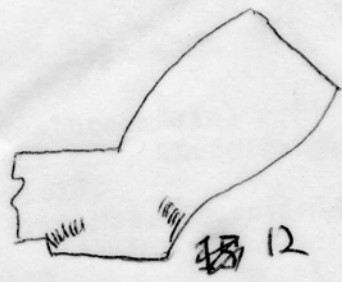
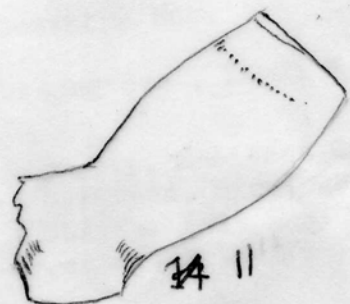
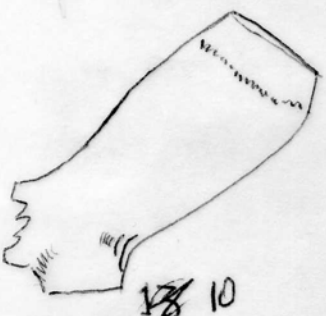
TC

Thomas Clarke. Broseley. b. 1611. (2) b.1637. (3)b.1647.

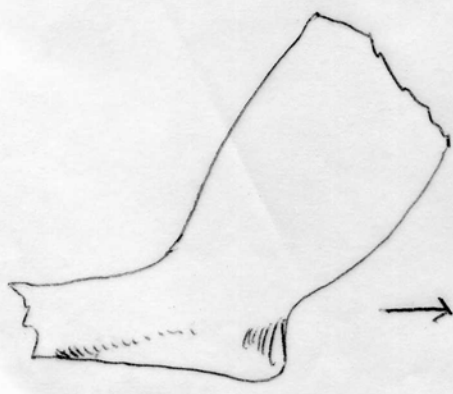
- 8 11. Type 1By. (a) British Mus. Thursfield Coll.
(c) St Fagans Mus from Pembroke. (Photo)
(b) Broseley. Atkinson Coll
Gloucester - Subp. - H. OR.
- 9 12. Type 2By. (a) Worcester Mus.
(b) Broseley, Robinson Coll also on type 1. Brit. Mus
Thursfield.
- 10 13. Type 2a By. (a) Gloucester Mus.
Brit. Mus. Thursfield Coll
- 11 14. " (a) Broseley Robinson Coll.
(b) Gloucester M s also on type 5. Brit. Mus.
and type 3. "
- 12 15. Type 3. By. Coventry Mus.
- 13 16. Type 3. By. Bromsgrove , Level 1 ? Thomas Cullemore 1664 Gloucester
- 14 17 Type 5c By. Broseley, Robinson Coll, Coalbrookdale. Brit Mus. Thursfield
(b) Deritend, Birmingham. Brit Mus, Thursfield. Also
CLARKE. Brit Mus. Thursfield.
Llanmaes, Gloucester
- 15 18 " Broseley, Robinson Coll. Brit Mus. Thursfield.
- 16 19. Type 5a. By. Port Royal ? THO/CHA/MBR/^{ERS}_{EY} BLY. Rubbing. Broseley



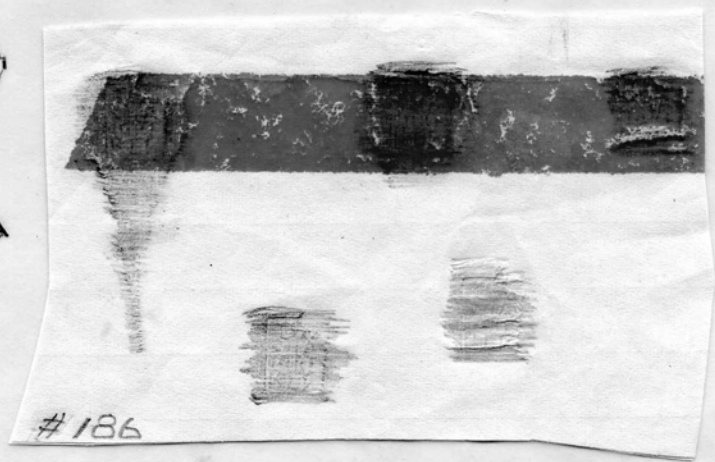
Atkinson Coll
Broseley



Broseley
Atman
coll



16



#186

24
(23)C.

17. Hales Abbey.

18. Port Royal.

19. a. Brentford Excavations.

b Bedford Sq. 3 examples 4/64 and 5/64 c.1780. v. B.A.R VI.

20 Kew Sewagw Works.

21. a. Crabtree Wharf, Fulham Elkins Coll type as Np 18.

b. James River, Virginia (Knowles Coll) 1/2

Also Type 22G. Armorial. Steyning and Bramber, (Atkinson Coll)

22. Woolwich Dockyard. 10 examples. 1/2 Also with leaves on the front.

23. Gunnersbury Park Mus. Cuming Mus.

24 London. Mus. Lond. 6675. Dwights Fulham Pottery

and T.COOMER.N.END/EXHIBITION OF INDUSTRY 1851. Mus Lond and T.COOMER/

b FULHAM, Ewell. bitolbeach (lines)

Also. Stem CLUER and T/C on spur from Greenwich (Atkinson Coll)

24
(23)D.

25. Thomas Clarke, Horsham 1754-96

a. Steyning

b. Bramber.

c. Steyning (Photo) 2. moulds one with continuous ribbon DIEU ET MON DROIT the other with a four part ribbon. No leaves on front mould. Rose and Thistle sides of Crown

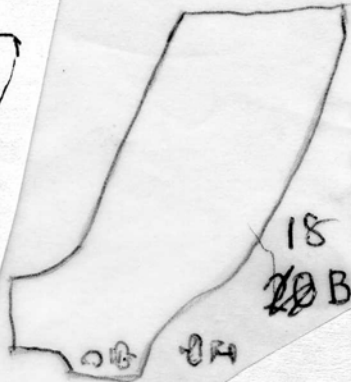
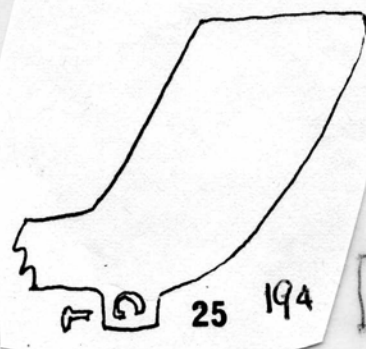
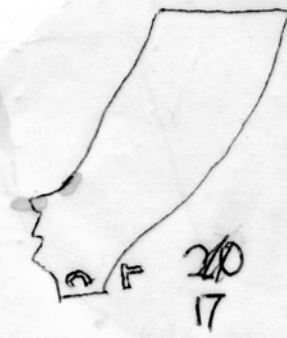
All Atkinson Coll. Also Ardingley Fulling Mill, Sussex T/C 1750-70. P.M.A. 1973 pp 52-3.

26. Dorking. B.A.R.VI

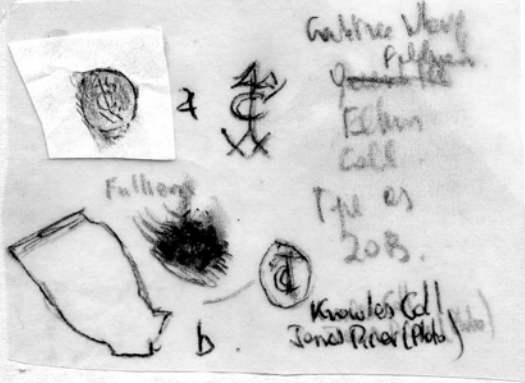
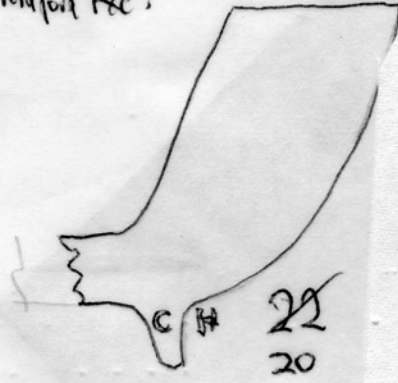
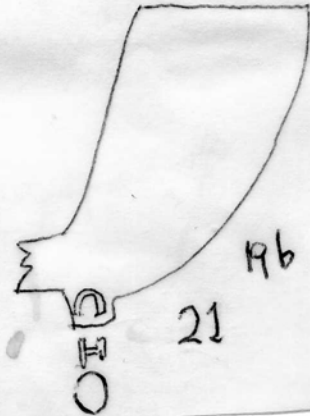
27. a. Lyminster. b. Christchurch Excav.

28. Portsmouth Harbour. (Hall Coll) a

29. Shaftesbury. 1660-80.



Breakfast Fxc.

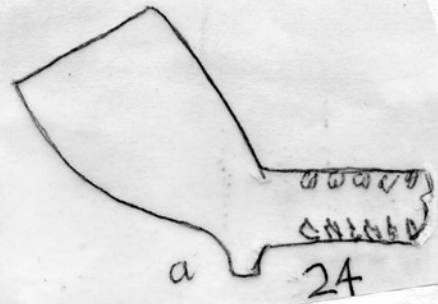
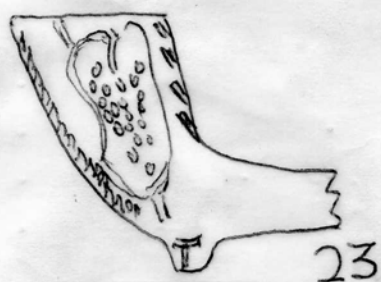


21

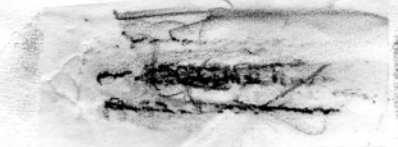


Woluck Dohyrd
10 heads
c 1830-50
With leaves on front
c 1830-50

22

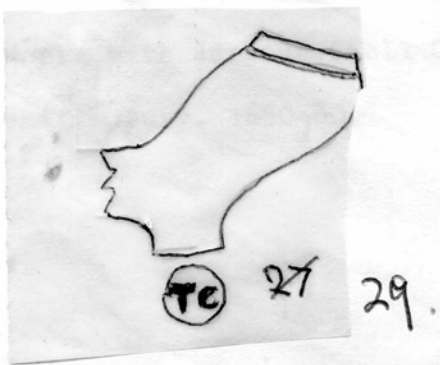
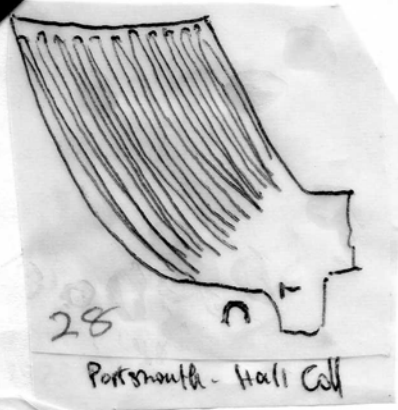
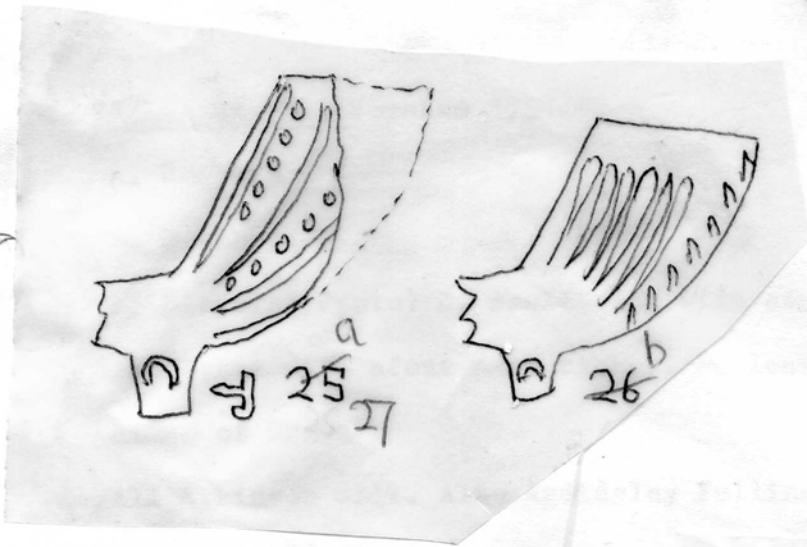
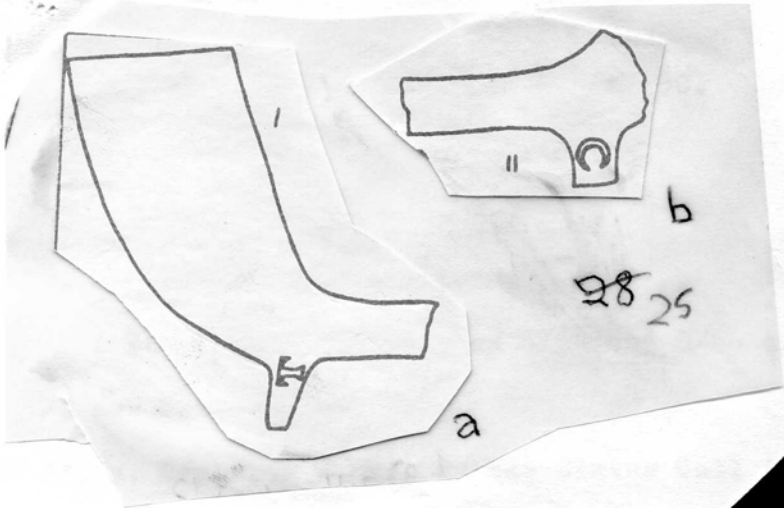


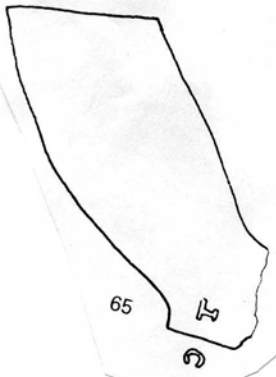
T. COOMER



b FULHAM

23 (D)
24





Poolc Oxc Kost 1990

Michael



58

— Also on Stamp.

Poolc Fee Kost
1990

Penne



WC

(25)

1. Type 1NE. Belfast c.1630-50(v.Ripon pipes) *Perbox No 20*
2. Stem. William Coates North Shields 1821-7. *Richards sup High Coates ? Date.*
- 3 Type 3By. Hereford
4. " " (a) $\frac{1}{2}$. Castle Green, Hereford.
(b) Caerleon. } Base marks.
5. All Castle Green, Hereford.

6 ~~at~~ Dublin Castle a Wood Quay 1700-40 ? Stone in Braselay

(25)A

7 From a kiln at Halesworth Suffolk.

Pipes of William Copeman (1) 1805(b)- 1861. Census, or (2) 1834(b) -1861 Census of Beccles Suffolk.

A. SEBASTOPOL- SCALED relief on stem

B " " showing bowl type

C **W.COPEMAN/BECCLES.**

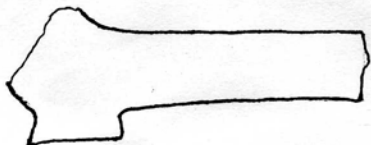
D Pipe type

E Plain bowls W/C on spur.

F. Kiln packing with SEBA and G with COPE

Sebastopol stormed 1855.

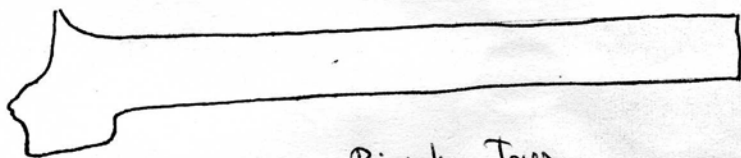
Dublin Castle



Birmingham Tower
2x copies

Dublin Castle

6b



Birmingham Tower



Stays
above header
Photo



Dublin
Castle
Tower

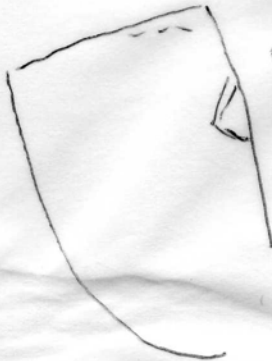
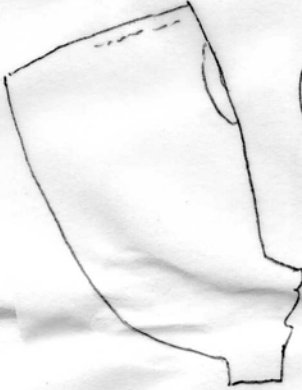


21
Photo
Dublin Castle
Dugout marks
a cross point
Powder Tower

2 examples
No marks
above
point

Sunday Irish

Dublin Mus



1556-11

1546-74

COATS
1725

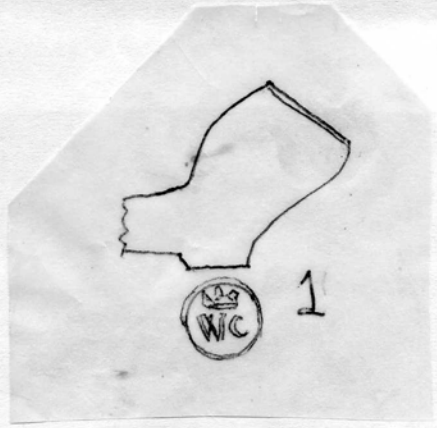
2

High Date
accuracy
to F. F. H. H. H.

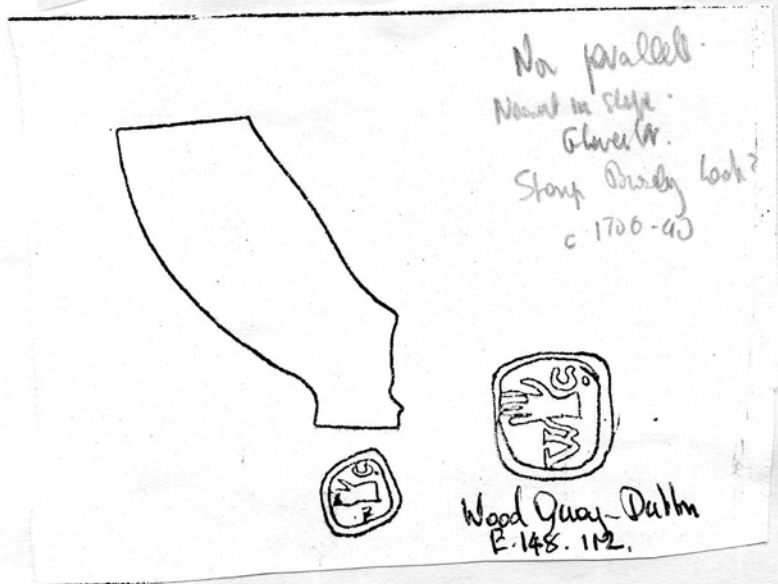
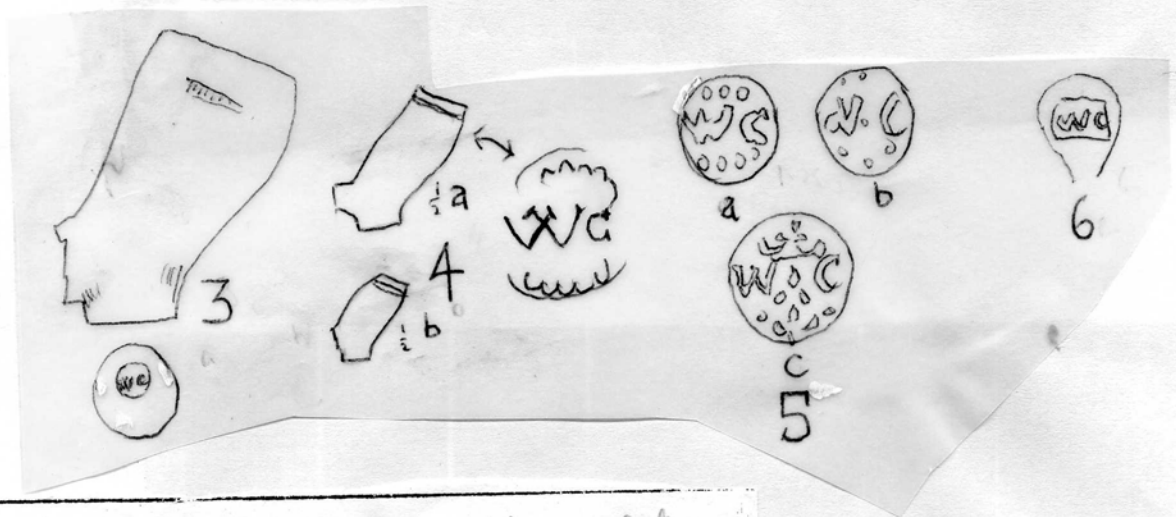


Hartlepool Fac 1876.
2.1. Inc. Wm Colling
Goldshead

1665-78



1

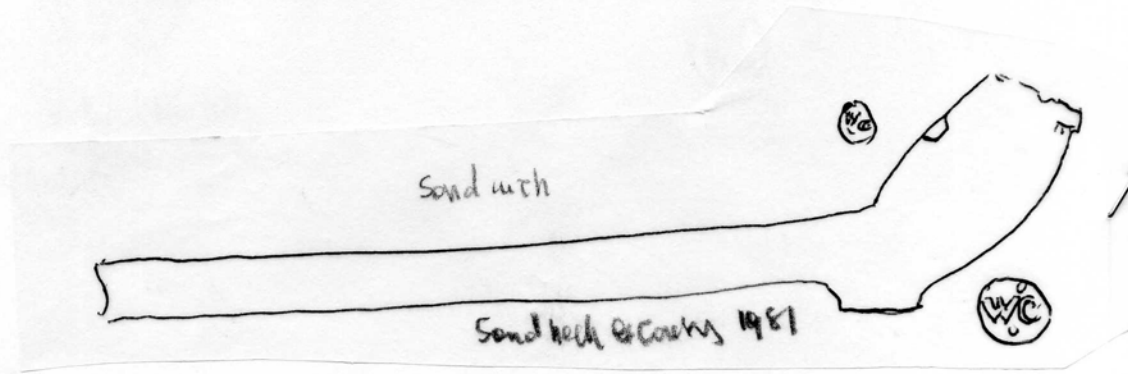


No parallel.
Narrow in style.
Glover's.
Stamp possibly look?
c 1700-40

Wood Quay - Dublin
E. 148. 112.

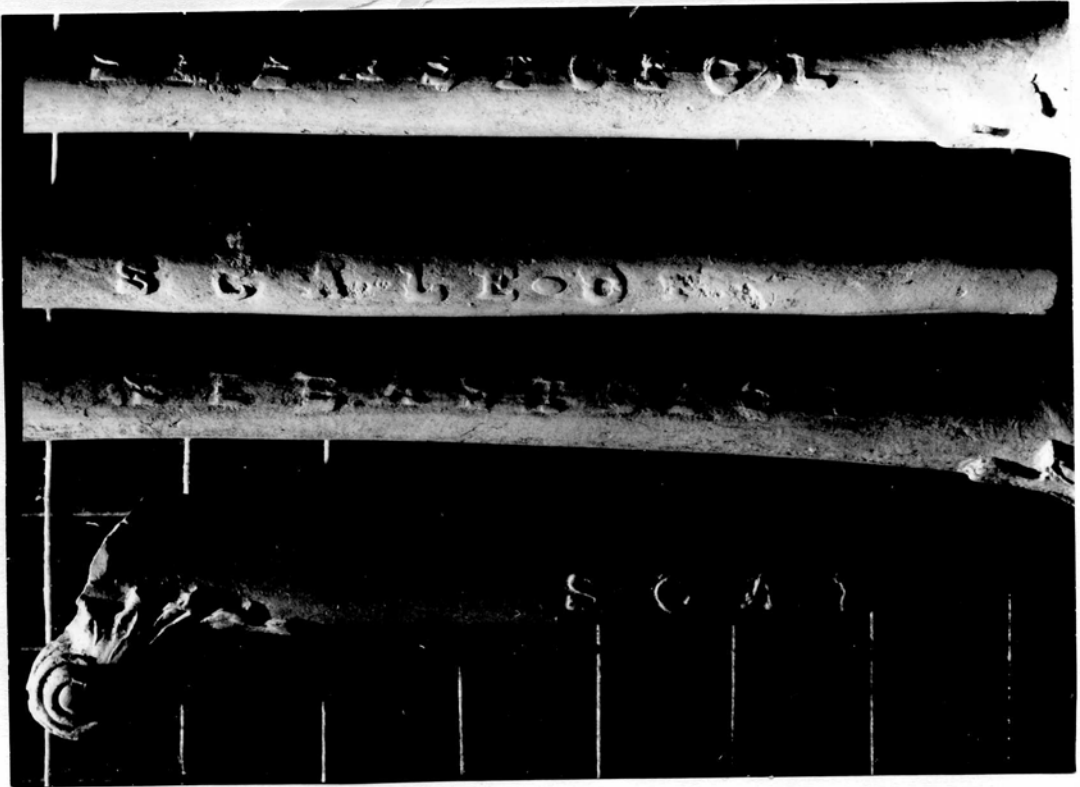


6a



Faint text, possibly a name or a title, located below the circular stamp. The text is very light and difficult to read.

25(A)



A



B

7

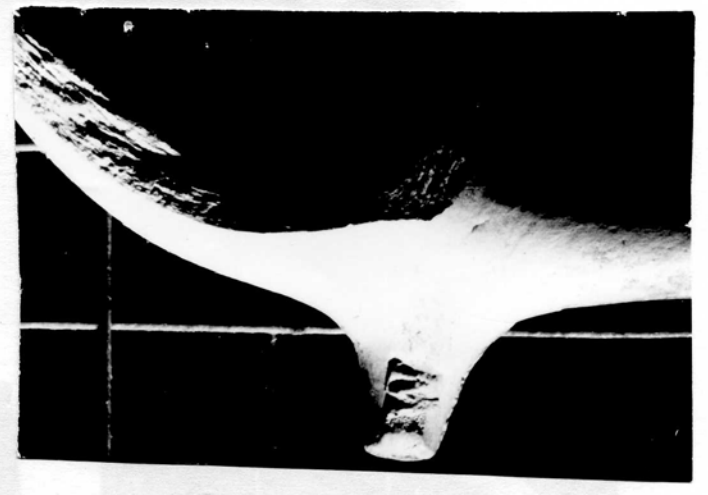
(25) A



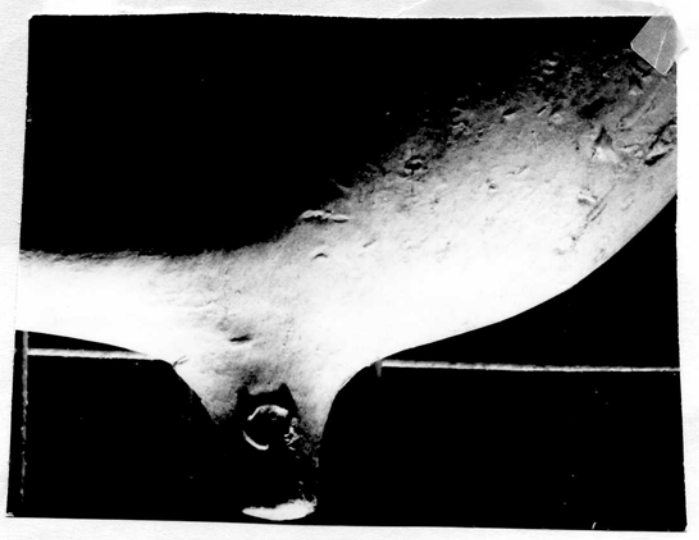
C



D



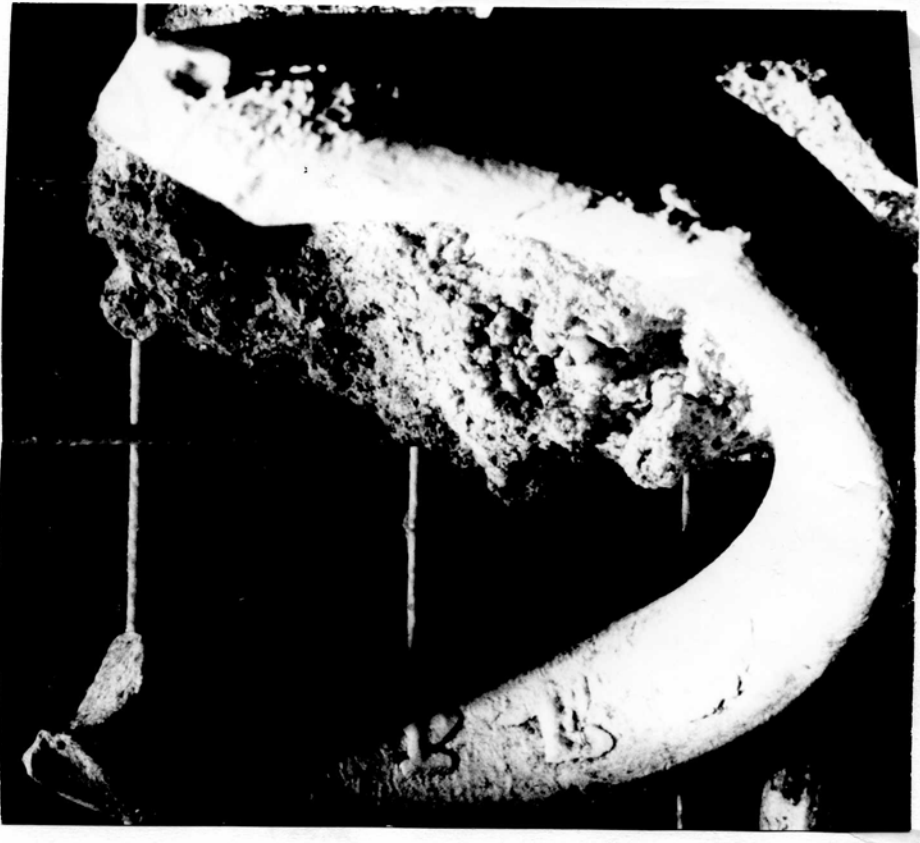
F



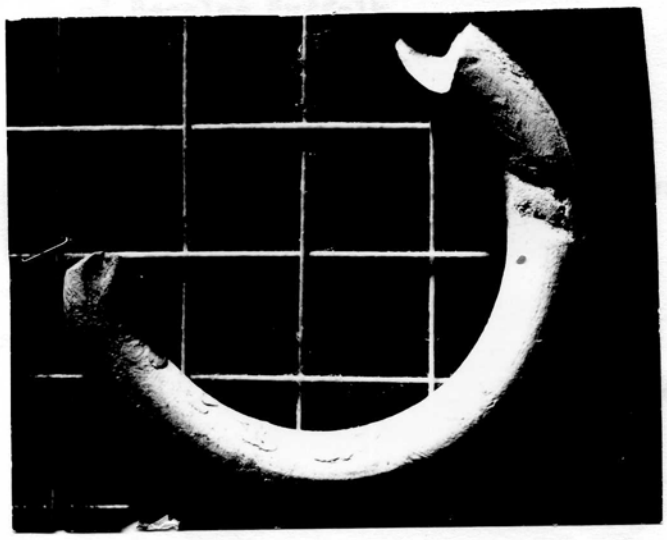
E

T

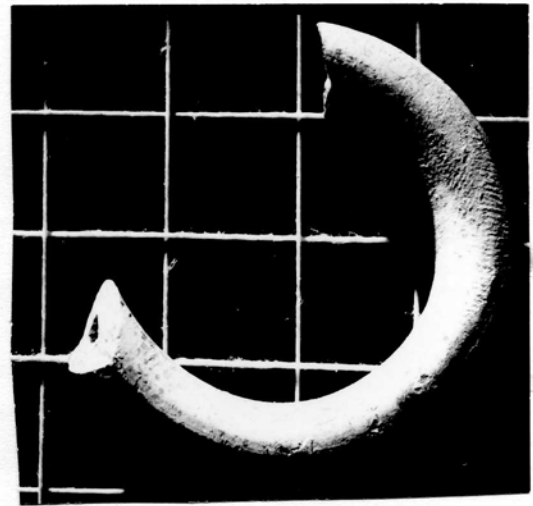
25A



F



G



G

7

WC

(25) B.

8.

- a. Carters Grove, Martins Hundred, Virginia.
Site A. Pit 9.
21 examples from Martins Hundred. 15 from site A, 8 from Pit 9.
6 from site B.

Also 9 examples from Mathews Manor, ~~xxxxxxx~~ 1625-50, Littleton Quarter(1630-50) Pettus Plantation 1640-90, Kingsmill tenement (1630-50)

See. B.A.R.II p.21.

b. As above.

c. City foreshore, London. Cheminant Coll

Date range 1640-70.

9. Queenhithe (Atkinson Coll, 2 examples. Rubbing from Queenhithe (Cheminant Coll)

10. Stem. Queenhithe, (Atkinson Coll).

11. Bedford Sq. London. Group 1780. B.A.R.VI

12. ? William Critchfield. c.1880.

a and b. Thames. (Cheminant Coll)

(25)C.

13. William Cope 1817-51. Woolwich.

a. Thames (Cheminant Coll)

b and c Woolwich Dockyard Excav.

d. Cheminant Coll.

14. Bowls inscribed in red brown ink (v RA)

a Queenhithe (Elkins Coll)

b. " " See B.A.R.VI

Note Atkinson has a 'Smoke your nose' half bowl in red ink and one completely red c.1700 both dug up by him at Queenhithe.

Also Type 10 G. W/C Marshalsea.

11 G W/C. Worthing Mus. 4 examples Winchester.

13 W/C Marshalsea.

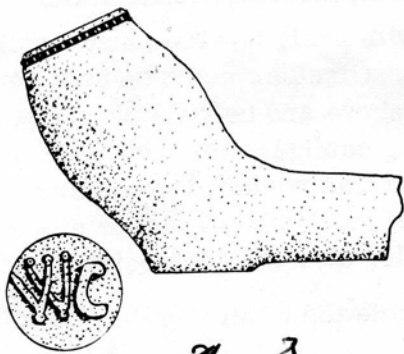
Type 22G. W/C Arms of Hanover, squiggles on front¹/₂ Merton Abbey. post 1770. per.D.R.A.

W.COPE/WOOLWICH. relief on stem Masonic symbols. per D.R.A. and R.A.O.B. Gunnersbury Pk.Mus.

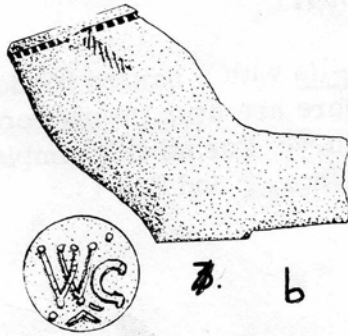
William Cope 1817-51. Woolwich.

also Crayford Dump c.1860-1910. Kent.

COOKE on bowl. Mortlake. William Cook 1839-78. Bermondsey



7. a



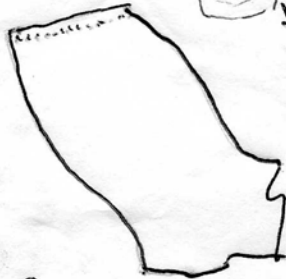
7. b

Pt 9. Cortes Cove,
1630-60
20

Site A c1670-60

Cortes Cove. Markus Huchel
Pt A 21 examples. 15 site A.
6 site B. 9 examples Markus Huchel
Dunhigh. c 1675. Smiley Ann
L. Alchem. Quarter (1630-50) Pettus
Plantation (c 1640-90) Kingsmill
Terenure (c 1630-50) all between
Markus Huchel and Jonesboro. 8/64

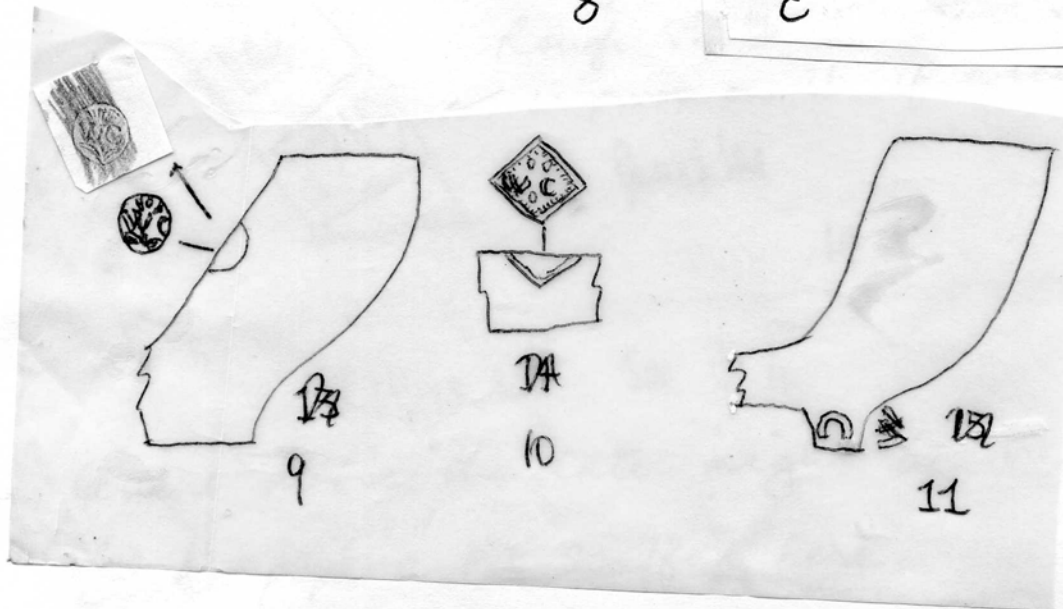
Chenest Coll



Relief
loc
back
City
foreshore

c

8



9

10

11

633 Fragile bowl + thin stem
no spur marks.
Not Wm v. A. Gifford

Thames

Chenest Coll

a

CRITCHFIELD
417
DALSTON

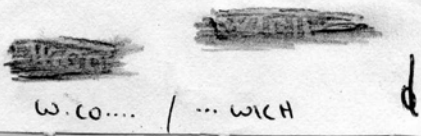
T. 33 CRITCHFIELD London
identical bowl to CRITCHFIELD DALSTON
no spur marks. Thames

Chenest Coll

b.

Stem mark on Q.V. Jubilee bowl
prov 1697. prov unknown.

Cheminot Coll



William Cope - Woolwich Dockyard
1817



Other side
starts with
etc.

* * W.COPE ? ? (obliterated)

Reverse
WOOLWICH * *

101

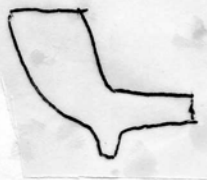
* * W.CO?

WOOLWICH * *

Releaf mark.

a

Water Bridge. Early Masonic. Chemist Coll
Thames



c Woolwich Dockyard.

13

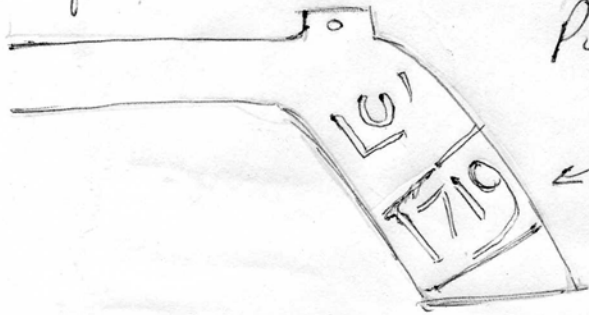
my "discard" heap before I spotted it, the
following mark hand written in Red-Brown ink

Pipe Type 25.

Rough sketch only, I will
improve on it if necessary!

Greenhill

14a

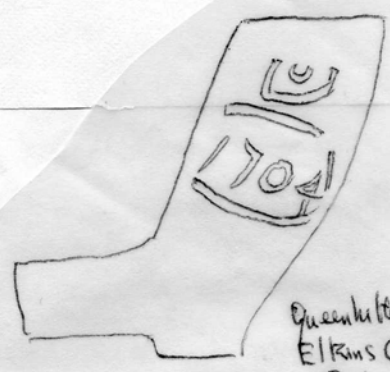


Elkins Coll See R.A.

The letters above the date might be WC

W.C. pipe a bit scuffed here.

Atkinson has a 'Smoke your Nose'
half ball in red with another printed
completely real CPD from Greenhill
both dug up by him



14b

Greenhill Dock
Elkins Coll
Real wh.

WC

(25)D.

Bowls from Surrey. see B.A.R.VI

(25)E.

15. William Chaplin(Chaperline, Champlin)

1689-99 Ashton Keynes, died Malmesbury 1710.(Will at Trowbridge Rec Office) but Malmesbury Abbey Recs say buried 1699. Possibly Sen and Jnr. Former base mark latter stem

a. Draycott Park Sutton Benger. 6 examples stamped on heel(large photo W.A.M.Bull No 14 1973) reads WILL/CHAPE/RLINE

b. Gloucester and Nailsworth(per C.Hawkes). Stem

c. Bristol on heel(Atkinson Coll)

d. Highworth, C_halford, Stem. Mark as b.

e stem Brinkworth(Oak Rhind Coll). B.A.R.

f. Brinkworth looks c 1800.

g. Brinkworth.

(25)F

16. Dover Excav 1969. Steyning. Bramber. With a star over initials,Lewes.

17. Poole. Christchurch Excav. 1974.

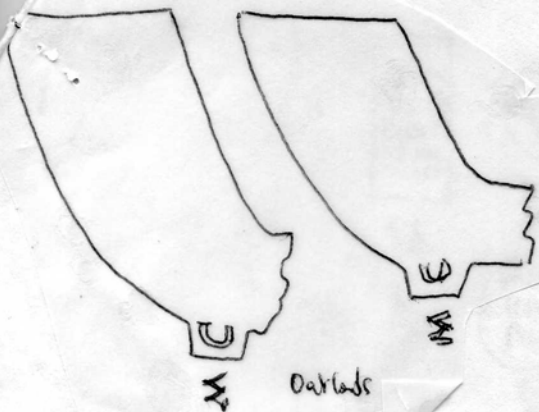
18. Christchurch Excav, 1974,

19. Shaftesbury.

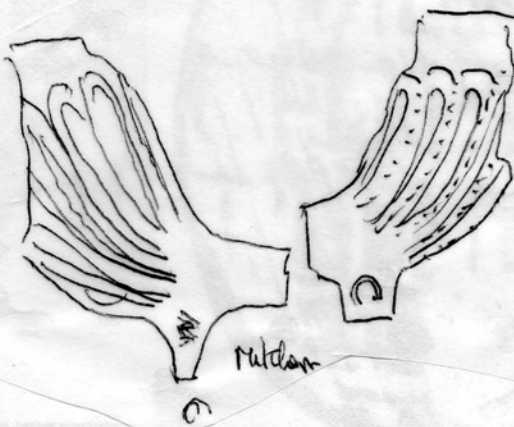
20. Horsham. Wiston. Bramber(Sussex)

b. Ardingley Fulling Mill(Sussex). (P.M.A. 1973. pp52-3)

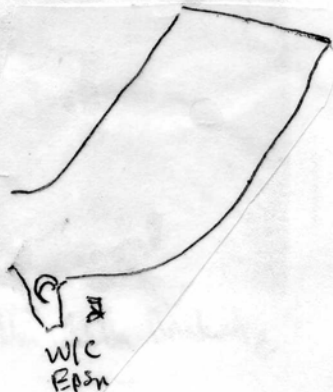
Also WILL CHAMPION c 1685-1700 Shepton Mallet (Pipes in Axbridge Mus)



Darklade



Mitcham



W/C Epsn



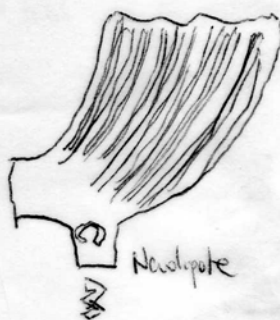
W/C Epsn



W/C Newspate



Newspate



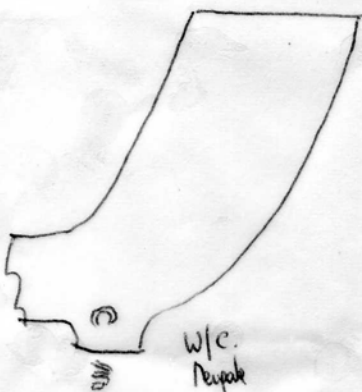
Newspate



South Godstone Surrey



Farnham



W/C Newspate

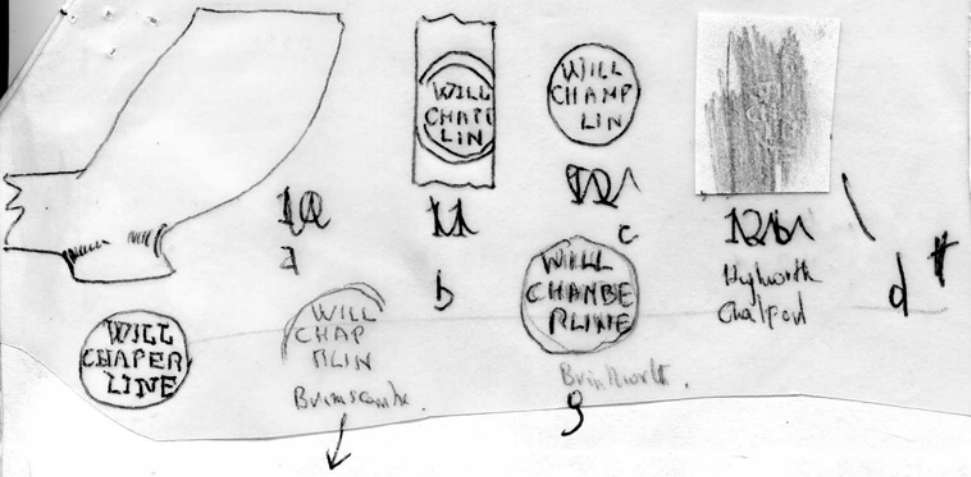


W/C Newspate

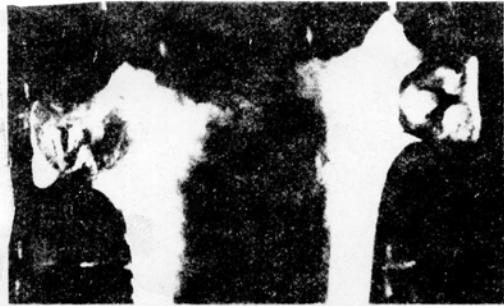
Surrey.

B. A. R. VI

(25) E.



Wm Chaplin - Brinkworth



W.C. Brinkworth on spec. F

100
 Cirencester
 Chalford
 Brimscombe
 Thropton
 Horsley } Gbs

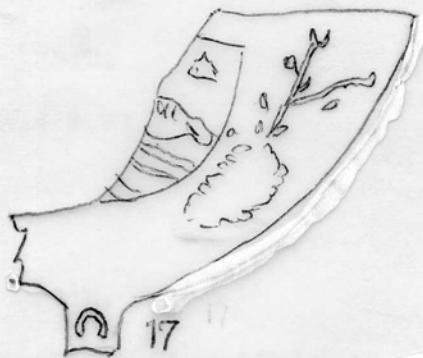
W
CHAP
ERLI
N

WILL
CHAP
ERLINE

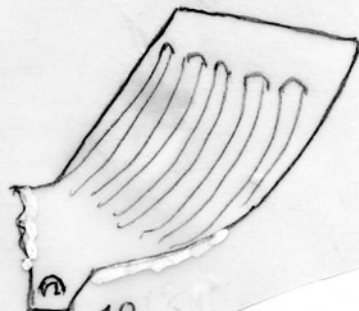
15



16



17

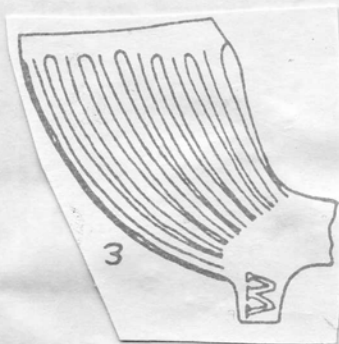


18



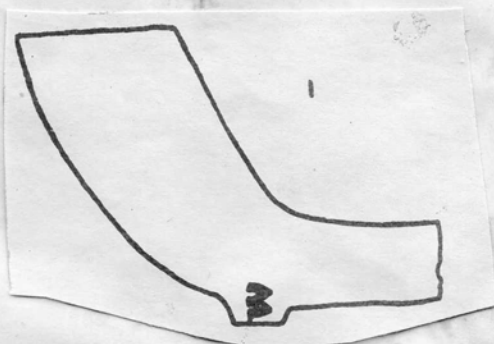
32

19



3

32 b a



1

32 b b

20

19-28 Bristol Makers 1640-60

19 Type 1B.

(a) Bristol, Wills Mus.

(b) British Mus, Bristol, Pritchard Coll.No.41. Marlborough

20 Type 2B. Bristol, Wills Mus.

21 Type 9B. British Mus, Bristol, Pritchard Coll No.76.

22.Type 1B Bristol.(J & P)

23 Type 2B " "

24 Type 1B. Bristol (J & P)

25. " " "
(a) Type ~~2/3B~~ 2/4B (J & P). Rippon Coll, Exeter Mus.

26. Type 5B British Mus, Pritchard Coll, No 44.

27 " " " No 45.

28 Type 7B " " No 39. Caerleon, St Fagans Mus(Photo)

16

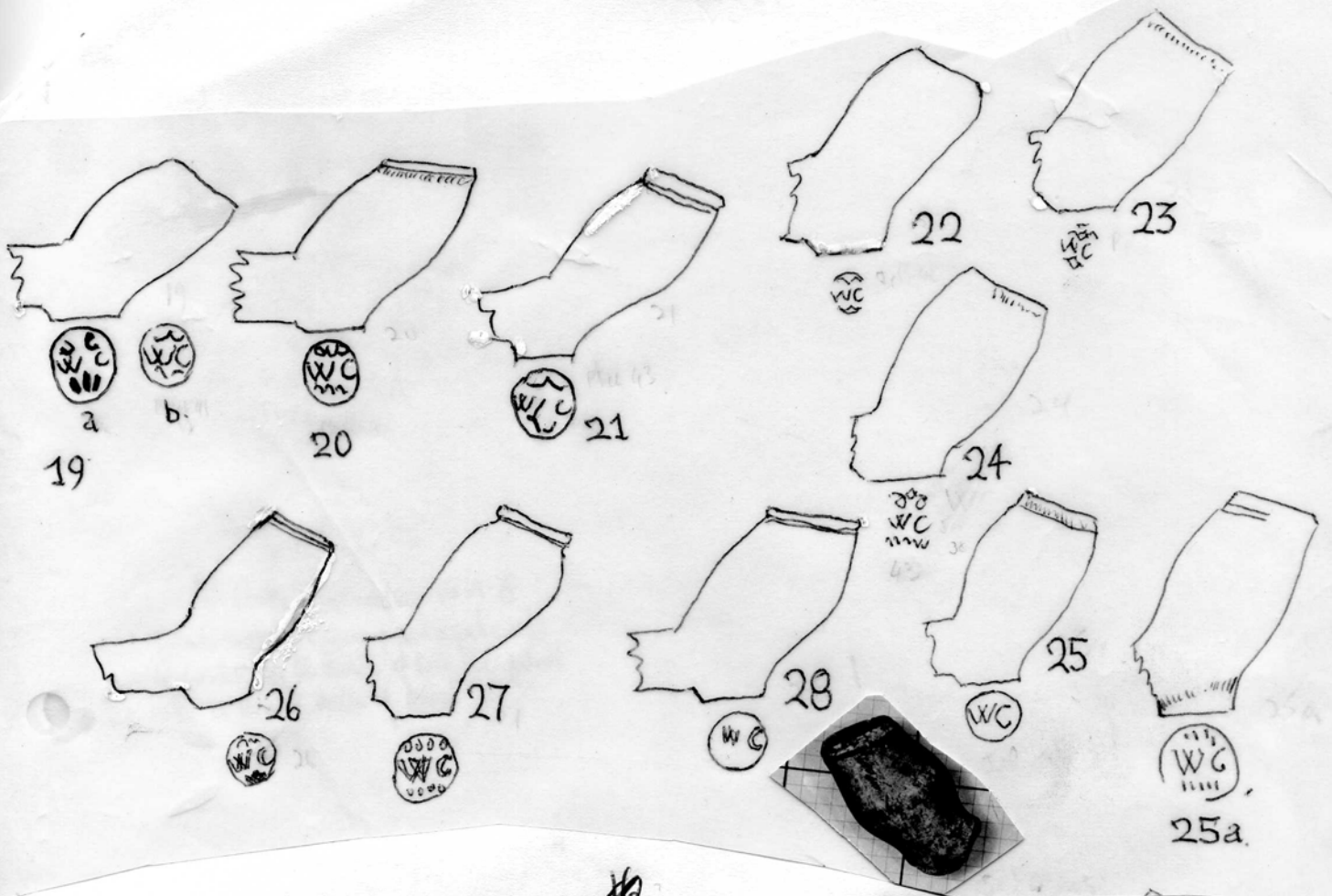
33-40. All Bristol

33-40.

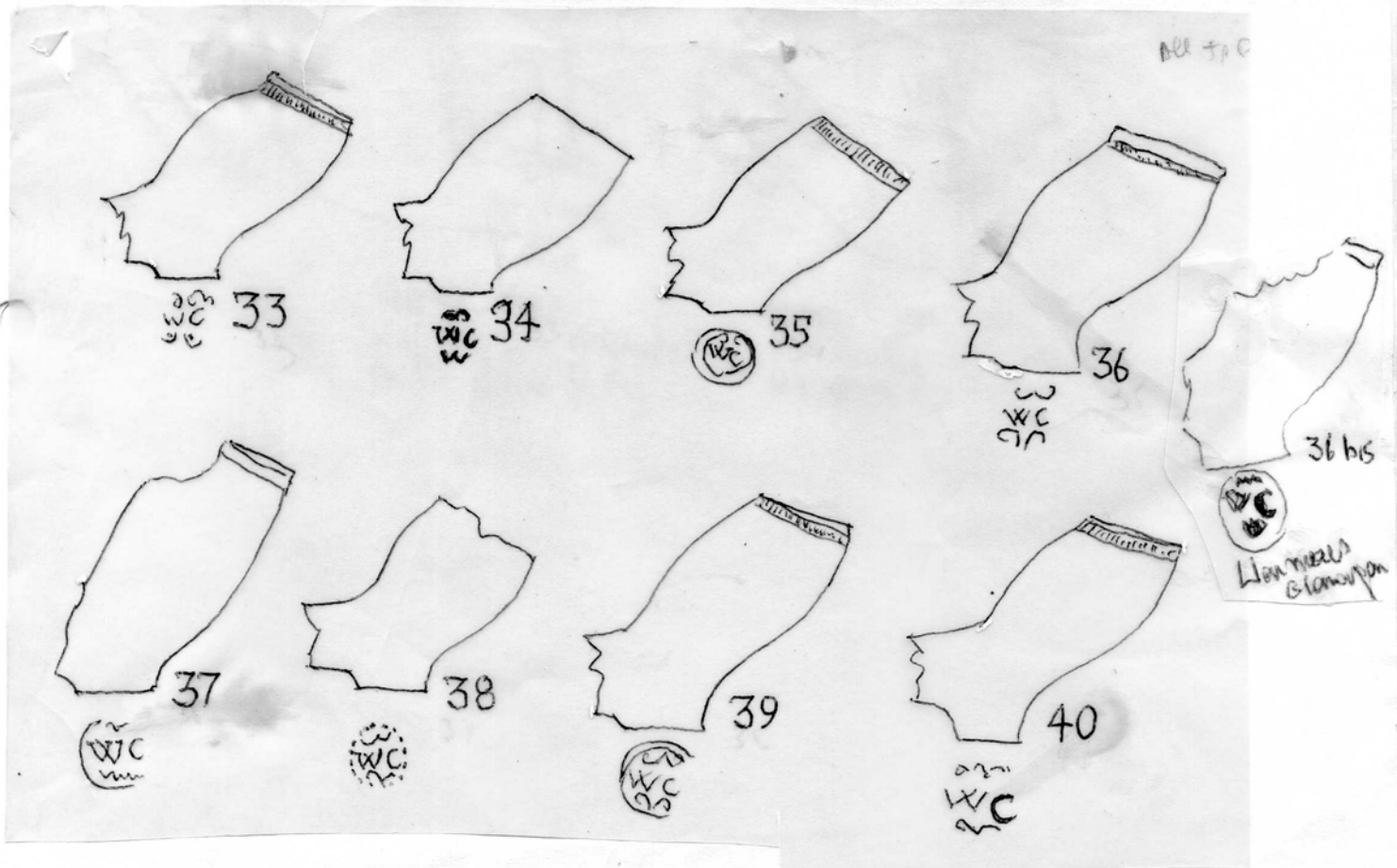
All Bristol(J & P)

33,34,35, Type 4B. 36, Type 9B. 37 Type 7B. 39,40 Type 6B
36 Bis - Glanmaes, Glanmaes (Med elafu Waleis No.9)

17



#6



#7

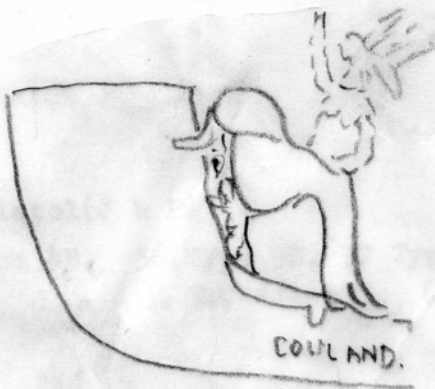
Additional.



SEY
Battersen Path
Tatman Call

B.A.R.I.X. 58

W. Cooke, Bermuda 1839-78
Tatman suggests acorn pipe popularised
in London by the Members of Oak Soc. formed
1841. a French Order of Drunk



COULAND.

LONDON

191787 1892
N.H. Cowland 18 Islayta Call
Tatman Boom old Pipe



191785 1892
W.H. Cowland
W.G. Grace Pipe

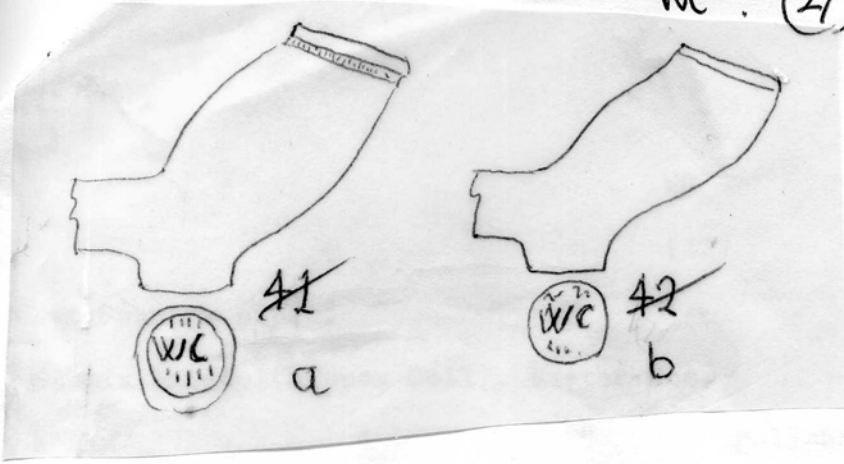
WC

(27)

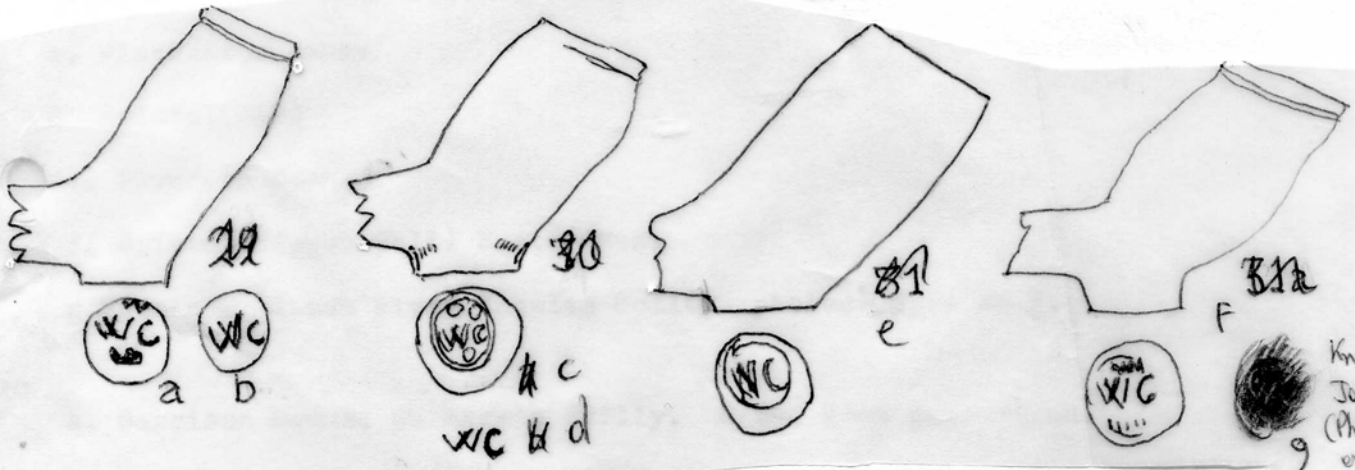
West Country pipes.

- 18 a ~~11x~~ Bristol(Rippon Coll), Exeter Mus.
b ~~12~~ " " " Polished. 8/64 . Mark also Binfield Album.
19. a Bristol(Pritchard Coll) British Mus.
b. Downside Abbey(O'Neill Coll). Taunton Mus.
c. Winchester excav
d Bristol(J&P)
e. Plymouth Excav.
f. Bristol(Rippon Coll) Exeter Mus.
g Rubbing. James River(Knowles Coll(v. photos) Type as F.
- 20 a. Garrison House, St Mary's Scilly. 8/64. Stem decoration.
b. and c as above. 7/64. a,b,c. Buff white local clay.

WC (27)

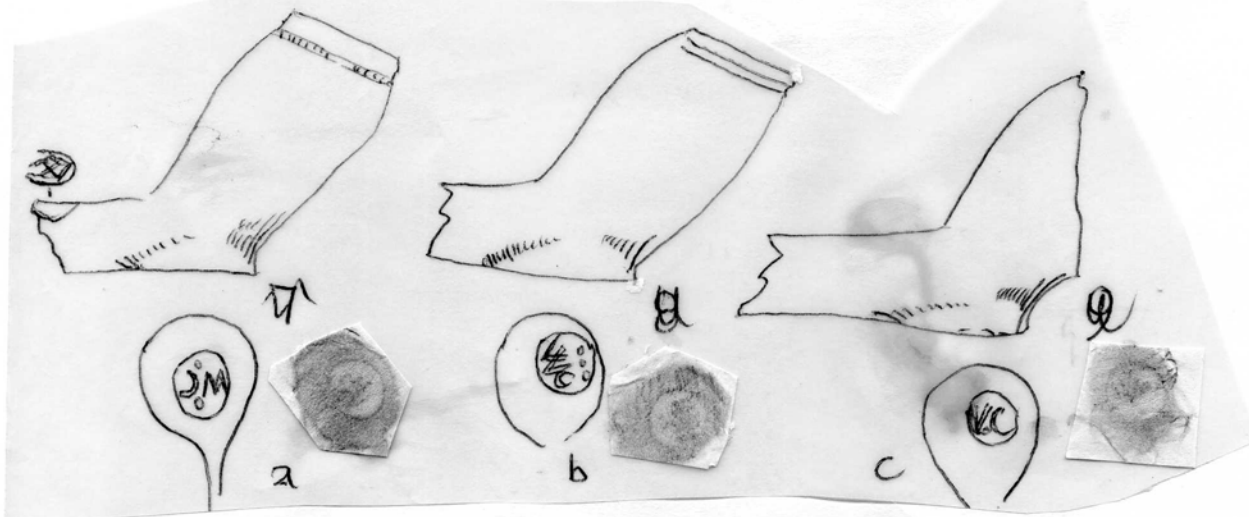


18



Knobs at Jones River (Photo) type 31a.

19



20

