



THE NATIONAL PIPE ARCHIVE

Registered Charity Number 1043065

Accession Number: LIVNP 1998.26.6 V36

Description: Volume 36 of Hammond's notebooks containing descriptions and drawings of pipes acquired by Peter Hammond between December 26 1982 and January 14 1984. To cite this work, quote Hammond, P., (1984) *Clay Pipes, Vol. 36*. National Pipe Archive LIVNP 1998.26.6 V36.

Comments: The original note book was lent to the archive for the production of this scan. A bound photocopy of the notebooks can be found as LIVNP 1998.26.6.

Key Words: Hammond

Scanned: PDF 19 October 2016

Any images in this PDF must not be lent, copied to another party, sold or reproduced in any way without prior permission from the National Pipe Archive and the copyright owner, if applicable. Reproduction or publication in any medium is expressly forbidden without written authorisation and should include an acknowledgement worded 'Courtesy of the National Pipe Archive' and quoting the relevant accession number.

INTRODUCTION : VOL 36

This volume was started on December, 26th, 1982 and was completed on January, 14th, 1984.

In each volume I have described the latest acquisitions to my pipe collection, drawing and describing interesting fragments and all of the complete bowls (including complete pipes) - found, bought, swapped and given to me. To find out where any particular bowl was found or obtained, its pipe number (as opposed to book number), or in which drawer it is in within the pipe cabinet, consult the separate clay pipe record book. Likewise, by reading off any of the small black numbers from the pipes, the book number for further details on any particular pipe can be checked by consulting the same record book.

This book records the pipes with book numbers between 3564 and 3735.

The format of writing up the pipes changes within this volume from p. 1564 onwards from continual paragraphs to a separate paragraph for each pipe with the pipe number underlined to make reference easier. In addition the new format will make writing up quicker and I will endeavour to have the descriptions opposite the relevant drawings too. It is hoped that the new system will prove to be more efficient.

Continued from Vol. 35

No. 3564 is a plain bowl with milking around the rim. It has no spur and was smoked a while. No. 3565 is an almost complete elaborate pipe representing a music hall act originating at the Old Palace, Wharf Street, Leicester. The subject of the pipe was Sam Torr, a Nottingham-born man who came to Leicester after making a name for himself on the boards of the London music halls. On September 3rd, 1883 he opened his Gaiety Palace of Varieties in Wharf Street and the legendary Vesta Tilley was top of the bill. It was from these premises that Sam Torr launched the career of Joseph Crag Merrick - "The Elephant Man". Sam Torr frequently performed on his own stage his character act of "On the back of Daddy-O". He appeared to be sitting on the back of an old man; this was in fact a life-sized dummy on a wicker frame. This is what is portrayed on the pipe - the "double act" being on the front of the bowl. On the stem is "SAM TORR ON HIS DADDY OH". The pipe has been made in a two-piece mould with the figures added on to the front afterwards. The detail is not particularly good but it must be realised that the pipe would have been difficult to mould. William Flanagan, a prominent Leicester pipe maker of 36, Frog Island is known to have made this pipe and the mould for it is still in existence, at the Leicester Museum. The pipe has been well smoked and is consequently heavily stained throughout.

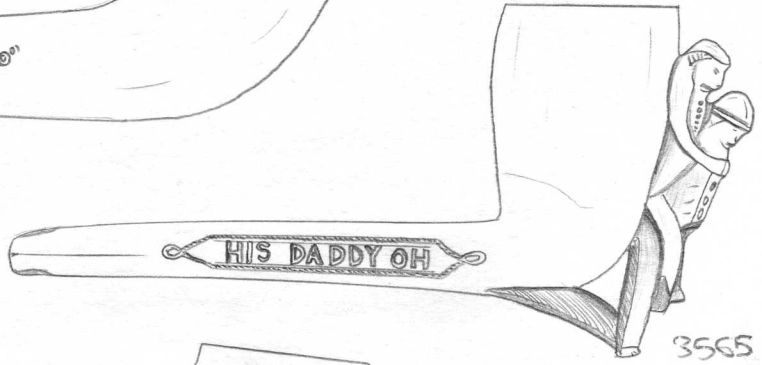
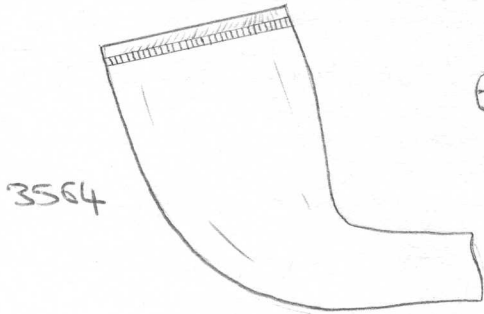
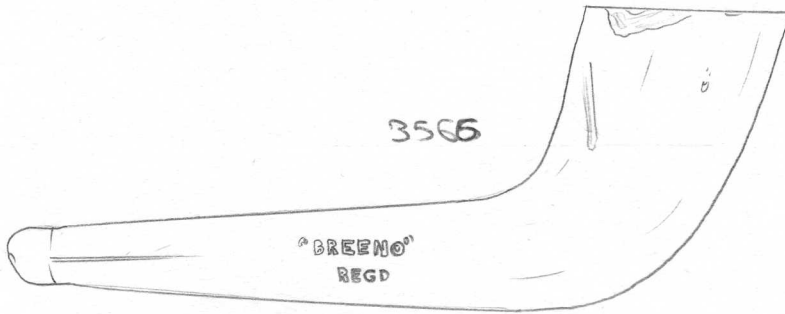
No. 3566 is a complete plain pipe with thick bowl walls and thick stem. It has no spur. Stamped rather poorly on one

1510

0

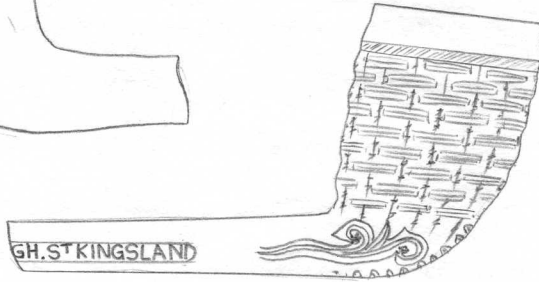
5cm

© National Pipe Archive



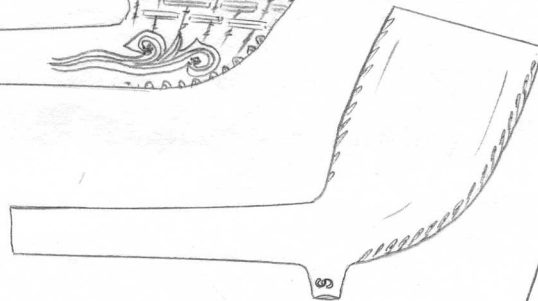
3564

3565

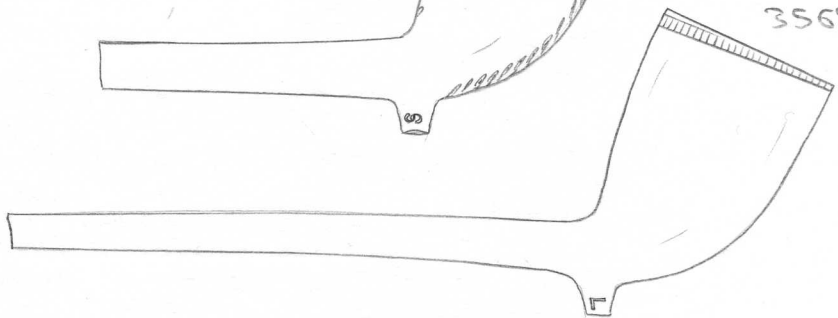


3567

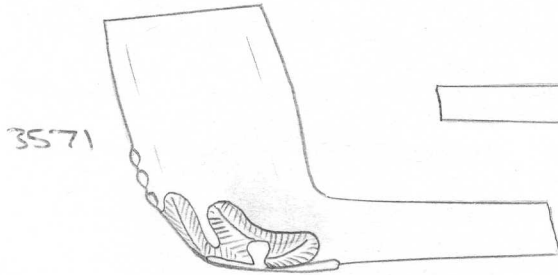
3570



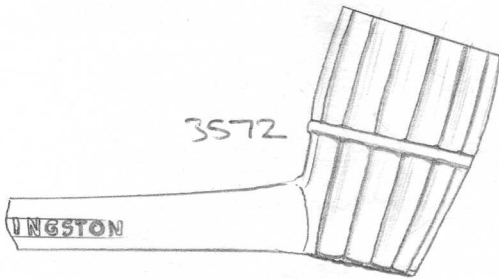
3568



3569

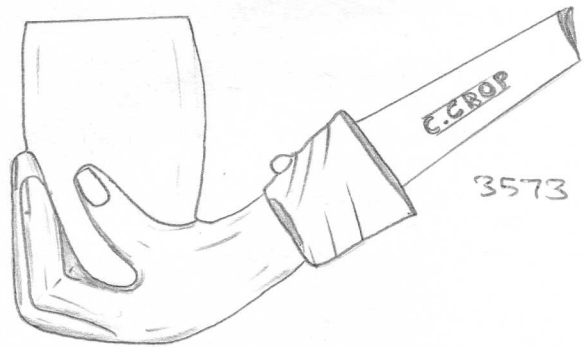


3571



3572

INGSTON



3573

C. CROOP

1511



1512



side of the stem is "BREENO REGD". This was one of the trade-marks of

No's 3567 - 3569 all appear to be pipes made by Samuel Lambert of High Street, Kingsland, London. No. 3567 is a basket-weave bowl with a scroll-work decoration at the base of each side. It has no spur. On the stem is 'LAMBERT - (H)IGH ST KINGSLAND'. Samuel Lambert senior died on 11th January, 1887 aged 78 and in his will dated the same day he left his "tobacco pipe business with stock and all utensils in trade with horse and cart and all and everything appertaining to the trade of tobacco pipe making" to his son Samuel. So the pipes could be made by either maker. No. 3567 was smoked a while. No. 3568 is a plain bowl with leaves along the seams. On the spur are the initials 'S.L.' reading from right to left from the mouth piece. Although the initials are placed the 'wrong' way round I am positive that this is a Samuel Lambert pipe because no. 2701 in Vol. 27 has the name on the stem as well as the initials in the 'wrong' position. It was smoked a lot. No. 3569 is a plain bowl with milking around the rim and most of its stem still intact. On the spur are the initials 'S.L.' - the correct way round. It was smoked a lot.

No. 3570 is a bowl decorated with flowers - a rose and two thistles on each side - and has a woody type decoration along the stem terminating in three 'branches' along each side of the base of the bowl. It has no spur and was smoked a little.

(513)

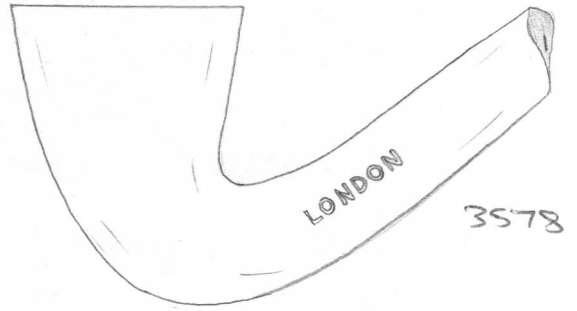
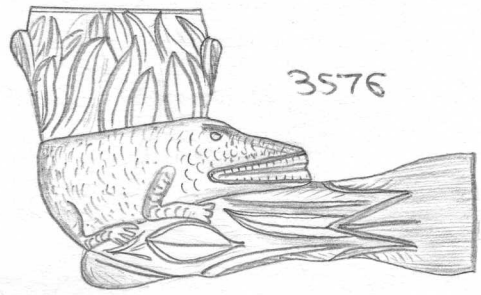
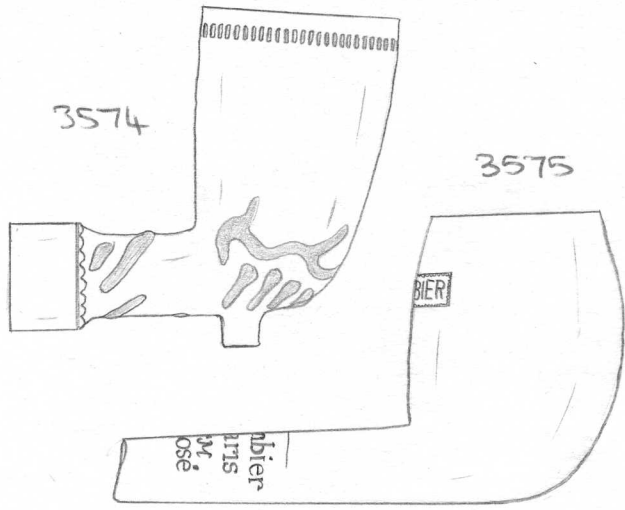
No. 3571 is a plain bowl with an unusual leaf-type decoration on the base of the bowl with a cross depicted in the centre. There are also three small spits above it on the front of the bowl. It has no spur and it was smoked a lot. No. 3572 is a bowl shaped as a bunch of cigars with a band around the centre. On the stem is the name 'J. VINING - (K)INGSTON' (London). James Vining junior and senior were tobacconists and pipe-makers. The bowl was smoked a while.

No. 3573 is a 'hard and egg' pipe with the name 'C. CROP - LONDON' on the stem. The hard is quite life-like and there is a cuff on the stem. It has been well-smoked and is stained as a result. No. 3574 is a French-made bowl, though unfortunately bearing no indication of a maker's mark. It is a fat bowl and is of the detachable type. It has milling in relief around the rim (very unusual) and is decorated with streaks of white glaze or enamel around the base. It was smoked a lot. No. 3575 is another French bowl, this one being named. Stamped within a decorative border on the back of the bowl is 'GAMBIER' and on the stem, impressed, is 'Gambier à Paris M. M. Depose'. It is unsmoked.

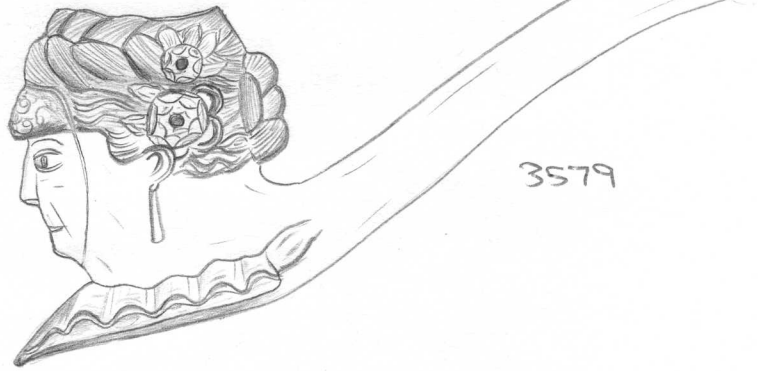
No. 3576 is an unusual pipe, depicting a crocodile or alligator around the bowl, head facing the stem, with leaves above and below. Although the pipe appears detachable from the drawing it is not - the rest of the stem is broken off at this point. It is un-smoked.

No. 3577 is an elaborate bowl shaped as a

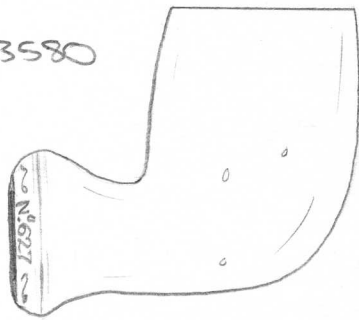
1514



3577



3580



3581



1515



1516



sitting bear - facing frontwards. He is sitting on a branch which extends down the stem and projects beyond the bowl. On the stem is 'RD 552852' on one side only. This number was registered on 19th November, 1909 by A. Spauld of 67, Grange Walk, Bermondsey, London and he was described as a 'clay tobacco pipe manufacturer'. The pipe is unsmoked. It replaces no. 1711 in Vol. 17 which is rather stained and has no stem on it. An interesting feature is that the bear has been moulded in 3 parts.

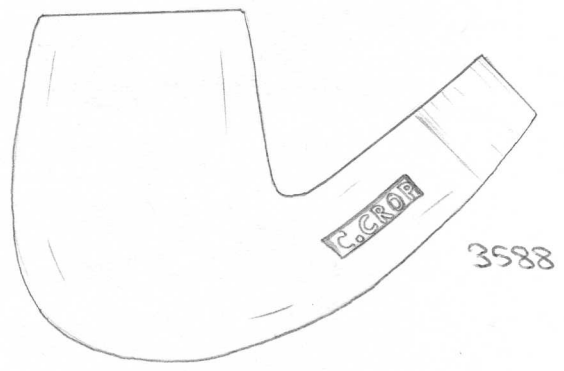
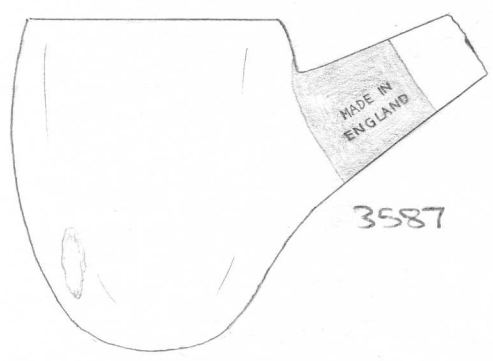
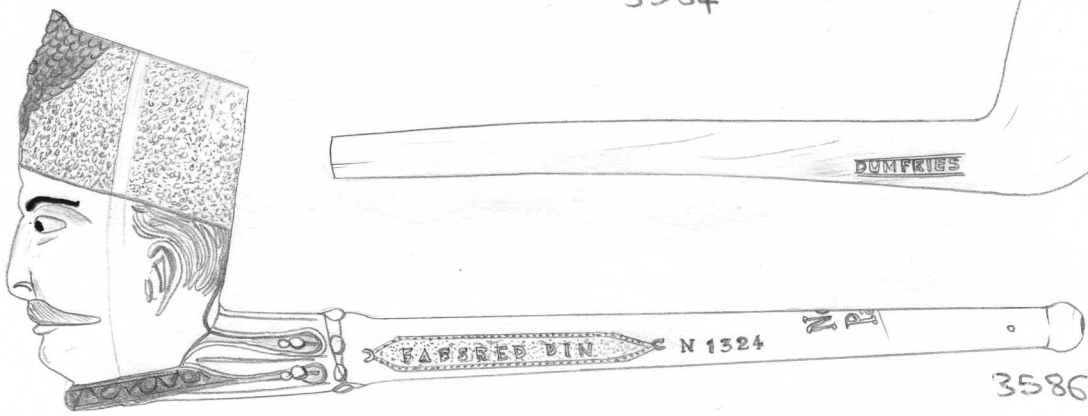
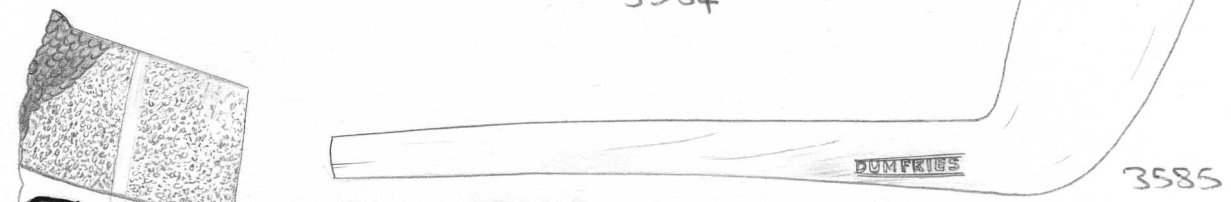
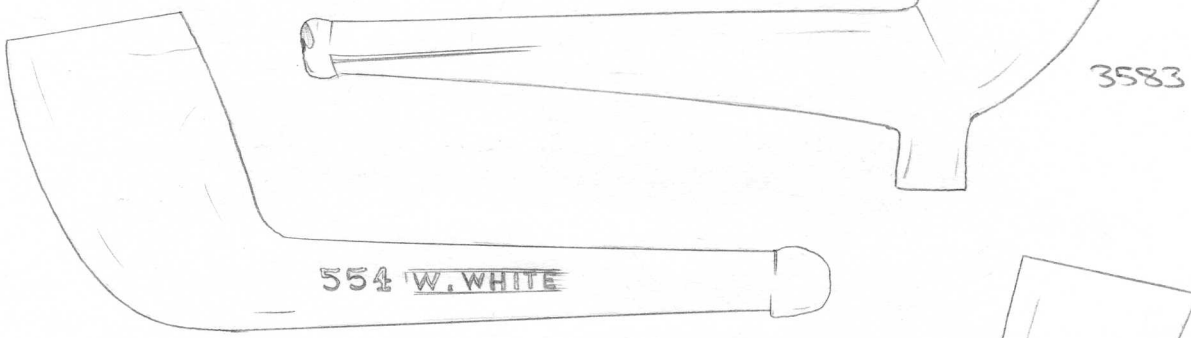
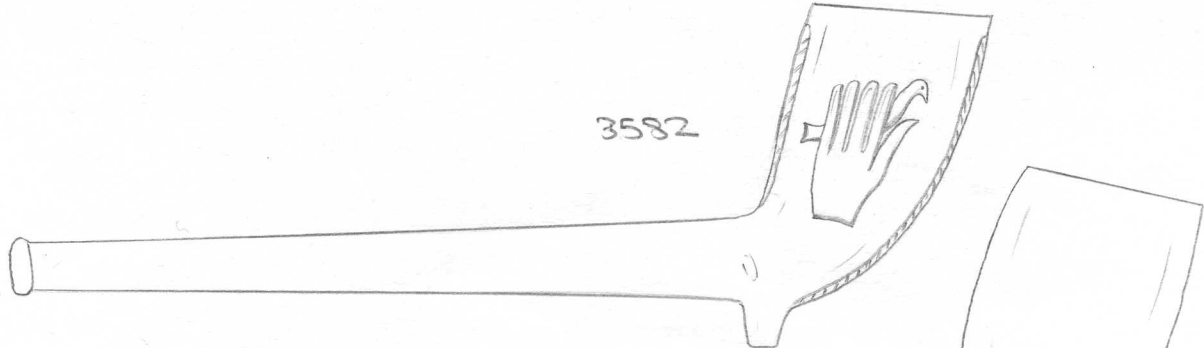
No. 3578 is a plain bowl with upward pointing stem which has 'LONDON MADE' on it. It has no spur and was smoked a while. No. 3579 is an almost complete pipe with the bowl elaborately shaped as a lady's head. She has wavy hair tied into a bun at the back and is wearing long ear-rings. The collar is long and fluted. Unfortunately there is no maker's name present. It was smoked a lot. No. 3580 is a plain French bowl with no spur. It is detachable and is rather fat. Around the stem rim in faint relief is 'L. FIOLET ST OMER NO 622'. It is un-smoked. No. 3581 is a very elaborate Foresters pipe in that the decoration is very clearly and expertly moulded. On one side is a stag's head with the sun above and shaking hands below and on the other side is a sun with a horn and bow and arrows. Tiny animals and leaf sprigs are also depicted on each side. It has leaves along the stem and the unidentified initials 'G.H' on the spur. It was smoked a while.

No. 3582 is a complete pipe with the decoration
1517

on the bowl representing an old saying "A bird in the hand is worth two in the bush". On one side of the bowl is a tree or shrub with two birds sitting in it and on the other there is a human hand holding a bird. There are leaves along the seams. The pipe has been well-smoked. No. 3583 is a fat and somewhat unusually shaped plain complete pipe with a fat spur. It was smoked a lot.

No. 3584 is a complete plain pipe with no spur. On the stem is 'W. WHITE - GLASGOW' with the number '554' in relief. No. 2045 in Vol. 20 has identical numbering and lettering on the stem but in addition has a stamp on the back of the bowl ('JAMES BELL - THE DIVAN - DUMFRIES'). It was smoked a lot. No. 3585 is an almost complete plain pipe with no spur with 'J. ROSS - DUMFRIES' on the stem. It is almost identical to no. 2283 in Vol. 22 which is fractionally larger in size.

No. 3586 is a superb complete French pipe with the bowl shaped as the head of a Turk or Indian nabob. He is wearing a large fez with jewels on the front. The collar is studded and the stem close to the bowl is intricately designed. He has a moustache. The jewels on the head-dress are coloured pink; the collar blue and the eyes are white with black pupils and eyebrows. On the stem, in relief, within a decorative border is what appears to be 'FASSED DIN - SHAN DE PERSE'. In fact this is likely to be a mis-representation of 'Nadir-ad-Din', who was Shah of Persia between 1748-1518.



1519

1520



1896. He visited Europe in 1873, 1878 and 1889. So the pipe could commemorate one of these visits or his death in 1896. Also on the stem is 'N. 1324' in relief and stamped on top is the maker's name 'Noel - Paris'. Nos 2145 in Vol. 21 and 2928 in Vol. 30 are similar bowls - the latter being almost identical except for different coloured enamelling. The pipe is un-smoked.

No. 3587 is a fat plain bowl with a short stem protruding upwards from half-way up the bowl which would have slotted into a separate stem. The pipe is very light-weight and so will be one of the cast-iron-type varieties that were made at the beginning of this century. Stamped on one side is 'MADE IN ENGLAND'. It does not appear to have been smoked. No. 3588 is a plain bowl with upward-pointing stem and has 'C. CROFT - LONDON' on it, poorly impressed. It has been well-smoked and is stained throughout as a result. No. 3589 is a simple but unusual head bowl. It portrays a young and old man's head - on one side he has curly or wavy hair, smooth complexion and a moustache; on the other side he has virtually no hair, no moustache, and sharper features and has a high coat collar. Sideboards are shown and there is a positive crease down the side of the cheek. Although poorly moulded the pipe cleverly shows the distinction between young and old. It was smoked a lot.

No. 3590 is a rather ugly though very well-made head, made in a three piece mould. The face is mask-like with wide slanting eyes, wide grinning mouth with teeth

1521

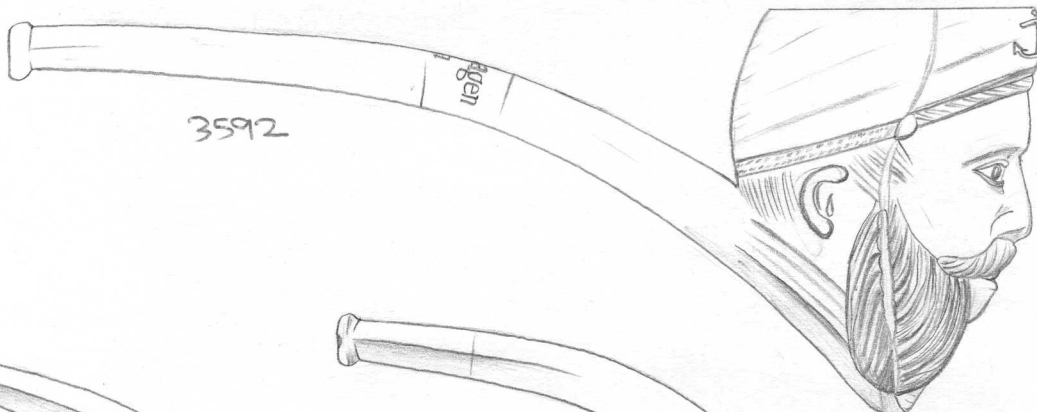
showing, high eye-brows and pouted nose and cheeks. He is wearing a head-dress, tied at the front and with tassels down behind each ear. There is long hair or cloth down the back of the head with little curled decorations at the end of the stem. Holes are pierced through the nose and ears, presumably for separate rings which would have been fitted onto it. The pipe is undoubtedly French-made though unfortunately no maker's name is present - this would have been further down the stem. It is unsmoked.

No's 3591 and 3592 are both elaborate complete Dutch-made pipes both made by Goedevaenger of Gouda. No. 3591 is shaped as a negro's head, very well made, with curly hair and wide lips and nose. The collar is studded and the bowl has been made in a three-piece mould. On the stem, in relief, within a decorative border is 'BON FUMEUL TOBACCO' - obviously a brand of tobacco. Stamped across the top of the stem is 'Goedevaenger - Gouda', though this is partly obscured by a coloured label stuck on the stem which says 'GOUDEWAAGEN'S PIJP' (Goedevaenger's pipe). It is unsmoked. No. 3592 is shaped as a man's head with wide protruding beard or sideboards and has a moustache. He is wearing a simple hat with an anchor on the front of it - perhaps indicating that the subject is a sailor or pirate. Stamped on top of the stem, like on no. 3591 is 'Goedevaenger - Gouda'. It was not smoked. It has been made in a three-piece mould and is again very well moulded.

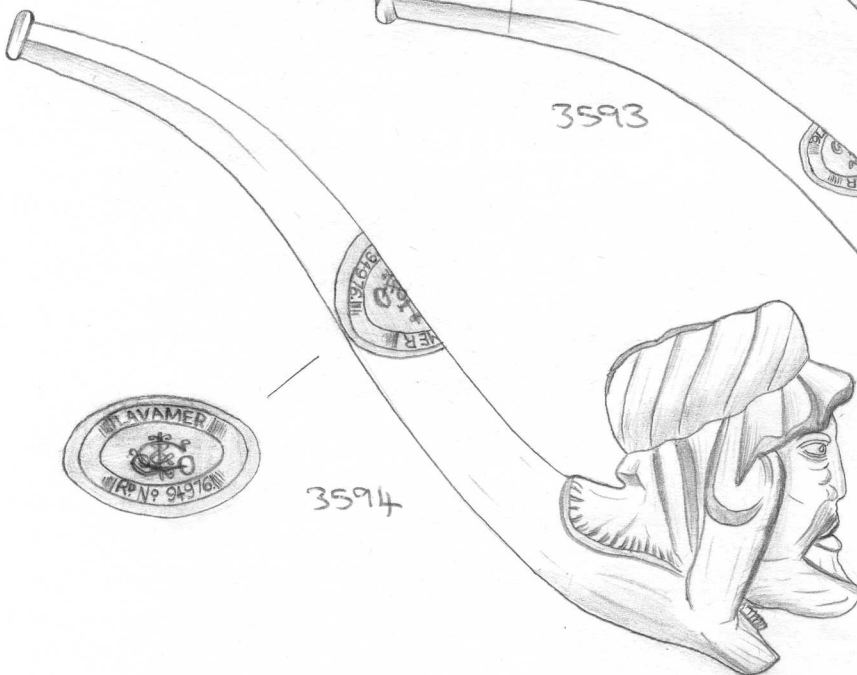
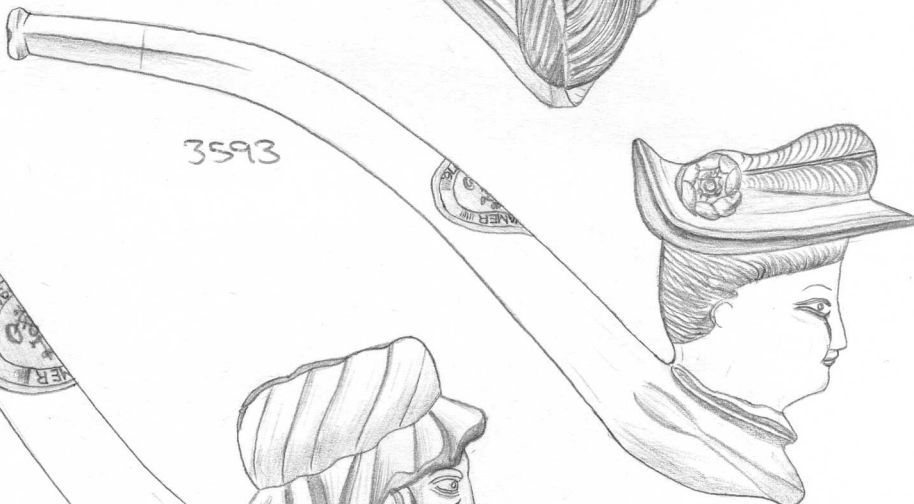
1522



3589



3593



1823





1PCE



1PCE



1PCE



1PCE



1PCE

1PCE

1524



© National Pipe Archive

* Alfred Charles Jack.

No's 3593 and 3594 are both pipes made by the same maker, but at this stage I am not certain who it was. Both have paper labels stuck on top of their stems with 'LAVEMER RD NO 94961' written in them with the intricate initials 'J & Co' inter-twined in the centre of the label. The number and 'LAVEMER' were registered as a trade mark on 6th, January, 1890, but unfortunately the records do not say by whom. * I already have several bowls with the initials on them - no. 1656 in Vol. 17 with 'LAVEMER COMPETITION PIPE' on it, and no 2321 in Vol. 23 which has 'PRIZE PIPE NO 12' on it. No. 2213 in Vol. 21 has normal initials 'J & Co' on it.

Hopefully someday I shall discover who the maker was. My only guess at present is Benjamin Jacobs of London who I know registered several pipes, so he must have been quite a prominent maker. No. 3993 is a complete pipe with the bowl shaped as a lady's head. She is wearing a fancy hat, turned upwards at the back, and with a large feather around the top. She has curly hair and has a jilly collar. It is unsmoked. No. 3994 is a complete pipe with the bowl shaped as an Arab's head. He has a short beard and a large wavy head-dress. His head is turned slightly to the right when looking from the front. Both pipes are made in normal two-piece moulds despite the ornate designs of the bowls. It is unsmoked.

No. 3395 is a splendid example of one of Charles Cropp's registered pipes. The bowl, which is detachable, is shaped as a lady's head - particularly unusual is that the

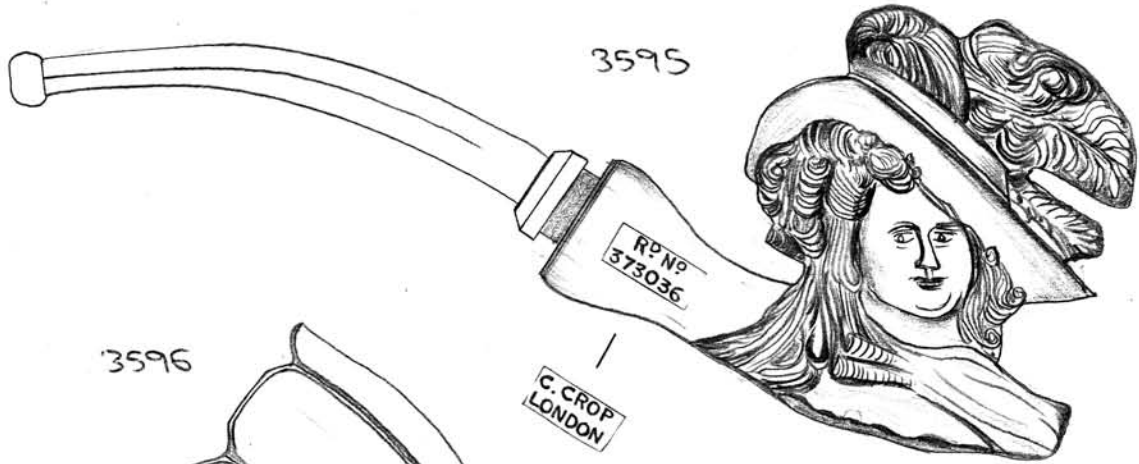
1525

face is on one side, not on the front of the bowl. She is wearing a large billowing hat - with a large feather on top of it. Her hair is long and has many curls in it. The collar is also long and slightly filled. On the stem is 'R^o N^o 373036 - S. CROP - LONDON'. Charles Crop and Sons registered this design on 20th April, 1901 and it could possibly be of a famous actress, such as Dolly Varden. The vulcanite stem is still complete and the clay bowl is coated with a colourless lacquer or varnish - a feature that Crop described in his adverts as "meerschaum washed" because on smoking it colours and makes the pipes certainly resemble meerschaum ones. This pipe has replaced no. 1622 in Vol. 16 which was stained and damaged. It is un-smoked.

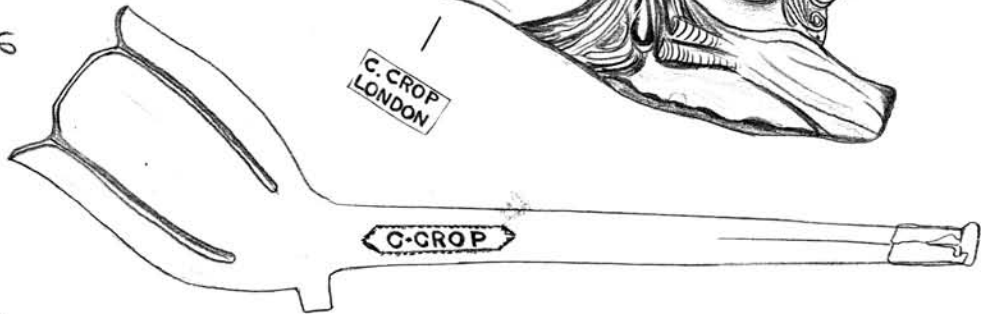
No's 3596 and 3597 are also complete pipes made by Charles Crop. No. 3596 has an unusual bowl shaped like a flower, segmented into four large lobes, wavy at the top. On the stem is 'C. CROP - LONDON' within a patterned border. No. 3597 has a small spiked bowl with short curved spur. On the stem is 'C. CROP - LONDON' within a decorative border. Both pipes are unsmoked and are "meerschaum washed".

No. 3598 is a detachable French bowl with a goose-bone stem. The bowl has small spikes on it, coloured pink and at the base of the stem part are the initials 'LF' (Louis Fiolet). It is un-smoked. The spur is pointed. No. 3599 is another flower type bowl, this one being detachable with upward pointing stem. The bowl is divided into eight small

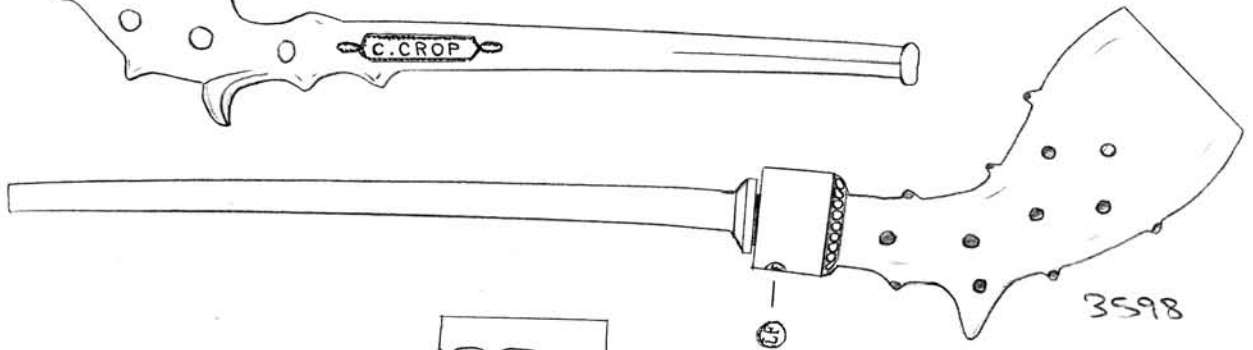
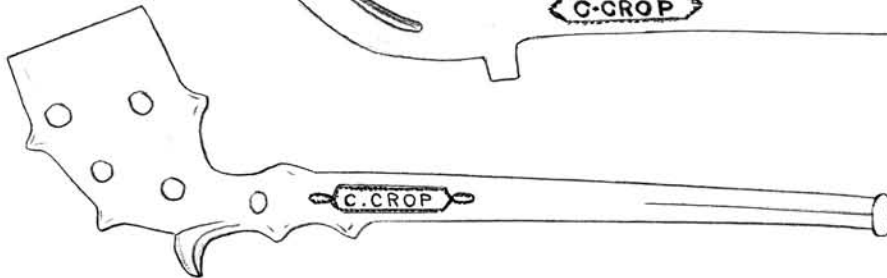
1526



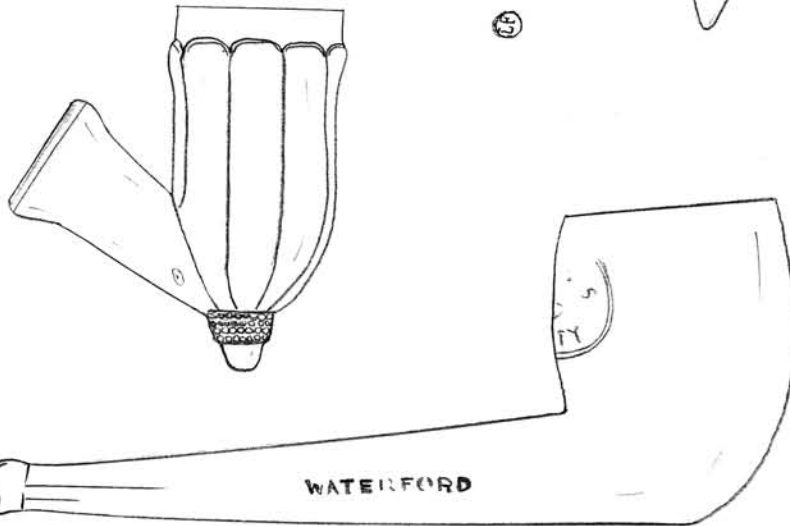
3596



3597



3599



3600

WATERFORD

1527

1528



petals or segments and beneath the bowl, acting as the spur, is an acorn. No maker's mark is present and the pipe is unsmoked. No. 3600 is a complete Irish-made pipe with a thick stem and bowl. It has no spur. Stamped very faintly on the back of the bowl is part of the motif 'BEN NEVIS CUTTY' and on the stem is the makers' name 'HANLEY & CO - WATERFORD'. It was smoked a lot.

No. 3601 and 3602 are both elaborate claw pipes both made by Charles Croop. The former is particularly ornate for it is large in size and has very large protruding talons with large scales and linear decoration over much of the bowl. It is detachable and the stem part is fitted with a brass fitting where the vulcanite stem would have fitted. Stamped onto one side of this is an oval mark containing the initials 'C.C.S.' (Charles Croop & Sons) and along the base of the bowl is 'C.CROOP - R.D. NO. 318759'. The design was registered on 11th May, 1898. It was smoked a lot and as a result it is stained throughout. No. 3602 is a smaller though still ornate claw and again it is detachable. The detail is clearly moulded and the pipe incorporates the unusual feature of having 'C.CROOP - LONDON' at the base of the bowl and end of stem in relief (normally his name is impressed). It is unsmoked.

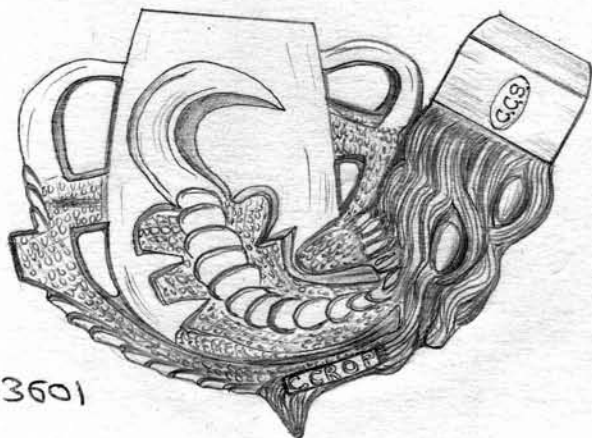
No. 3603 is a plain bowl with very thin walls and a small spur with a shield on each side of it. Stamped onto the back of the bowl is some initials surrounded by the words 'TRADE MARK'. One of the letters of the initials

1527

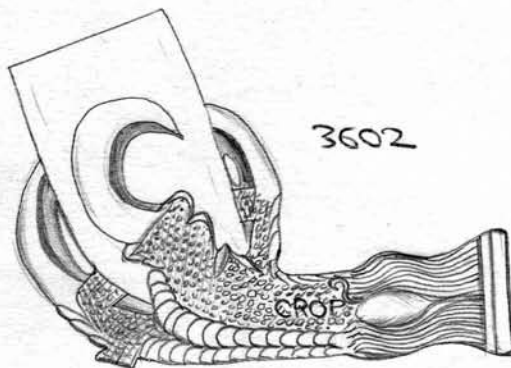
appears to be missing - the other letters being ... 'C. M.' (could 'M' stand for maker?) If the first letter was an 'E' then the pipe could be made by Eberzer Church of London. It is unsmoked. No. 3604 is a plain bowl stamped on the back with a shield and 'CRITCHFIELD - LONDON'. There were several Critchfield makers, all probably related, and for two others in my collection see no's 2979 in Vol. 31 ('E. CRITCHFIELD - OLD FORD') and 3519 in Vol. 35 ('J. CRITCHFIELD'). The bowl was smoked a lot. The spur is broken off.

No. 3605 is a plain bowl with a stamp on the back of the bowl, containing a shield and the words 'CLARK - MAKER'. On the spur are the initials 'G.C.' of George Clark of Westminster, London, known to have been working between c. 1873-1883. The bowl was smoked a while. No. 3606 is a plain bowl with a grooved line along each seam and two little projecting pieces either side at the base to enable the pipe to rest upright. No maker's mark is present. It is un-smoked. No. 3607 is a lined bowl dating from c. 1830-40 and has drapery and tassel type decoration around the top. On the spur are the initials 'J.S.', possibly of James Swingard of Westminster who is known to have been working between c. 1828-1854 and was master of the Tobacco Pipe Makers Company in 1828. It does not appear to have been smoked. No. 3608 is a short fat bowl with a grooved decoration around the top quarter of the bowl - resembling the cup of an acorn. The stem would have pointed upwards. It was smoked a while.

1830

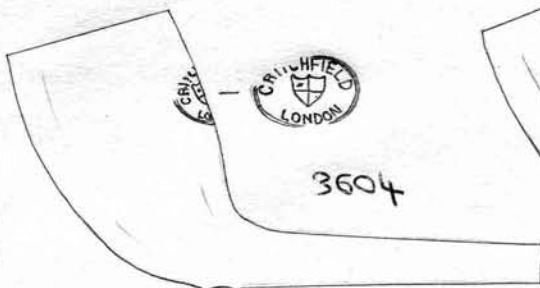
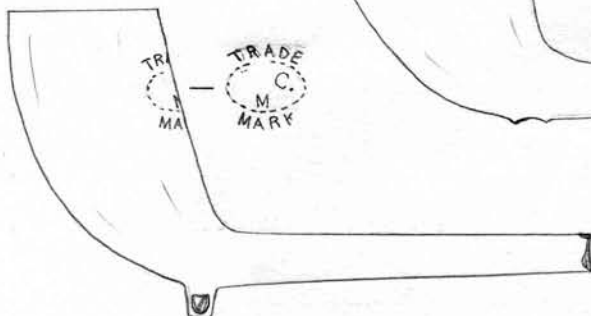


3601

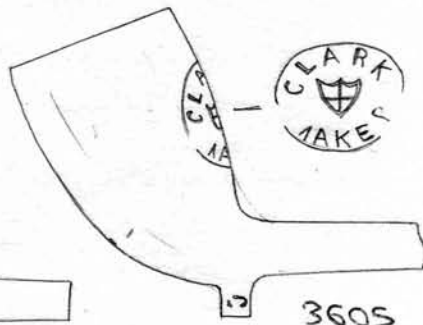


3602

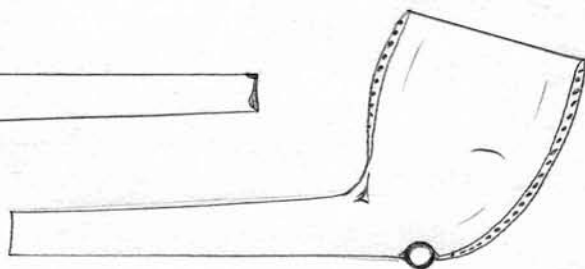
3603



3604



3605

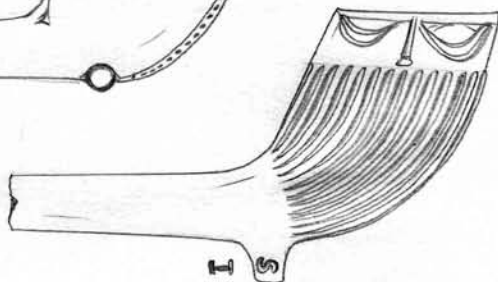


3606

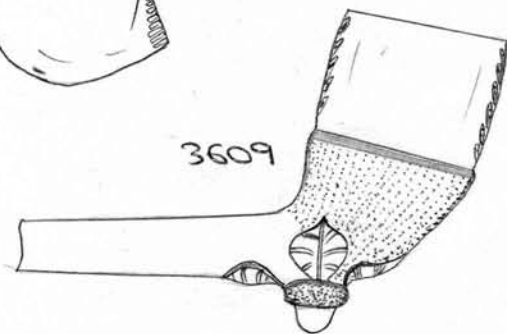


3608

3607



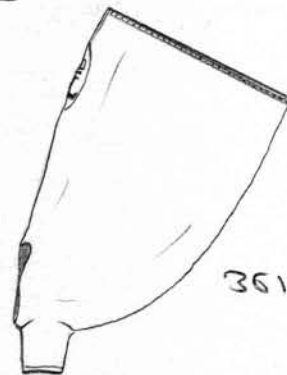
I S



3609



3610



3611

1531

1532



No. 3610 is a simple though very-well moulded bowl consisting of a very large number of thin lines down the whole bowl. They are more numerous by far than in a normal lined pipe and so must have been produced by a skilful mould maker. There is a shield on each side of the spur and it was smoked a while. No. 3611 is another variation of the as yet unidentified 'L' and crown pipe - stamped onto the back of the bowl. The rest of the bowl is plain with milling around the rim. It is unsmoked.

No. 3612 is a detachable French bowl - the bowl being fat and plain with a line of beading around it close to the top. The stem is diamond-shaped and along the lines or corners on each side, in relief, is 'GAMBIER A PARIS'. The pipe was smoked quite a while. No. 3613 is an early bowl dating from c. 1670 and is interesting because the heel is marked with the trade mark of a grove or hand - used by the Gauntlet family of Wiltshire during the seventeenth and eighteenth centuries. It has milling around the rim and seems to have been smoked a little.

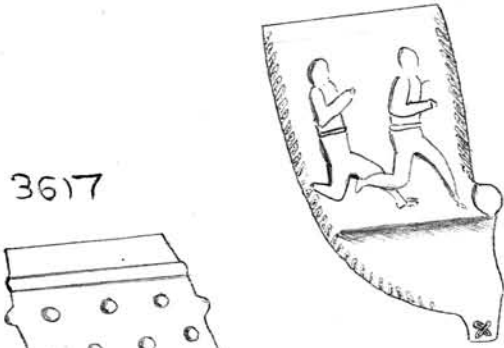
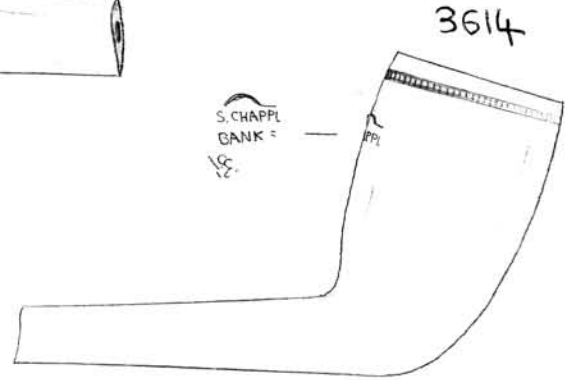
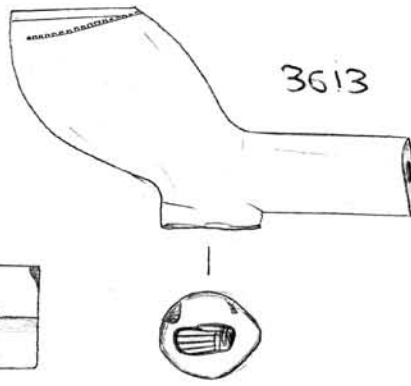
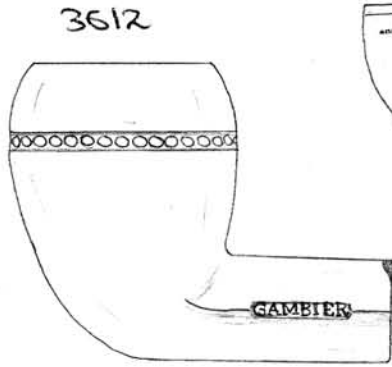
No. 3614 is a plain bowl with fine milling around its rim. On the back is a plain faint stamp, consisting of a shield and part of the motif 'S. CHAPPLE - BANK ST - GUERNSEY'. Is the Chapple related to other Chapple's in southern England such as E. Chapple of Renton Abbott? The bowl is unsmoked and has no spur. No. 3615 is an early nineteenth century Nottingham-made bowl, possibly made by Thomas Edwards. On each side of

1533

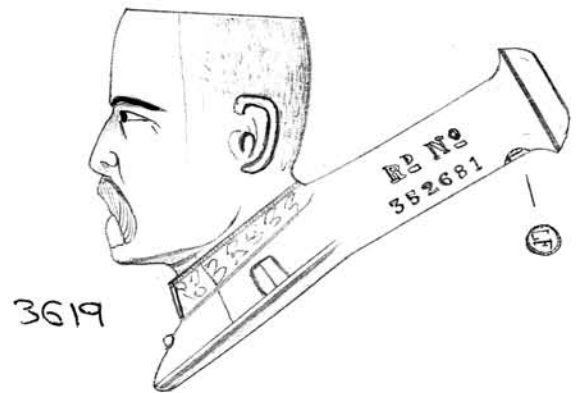
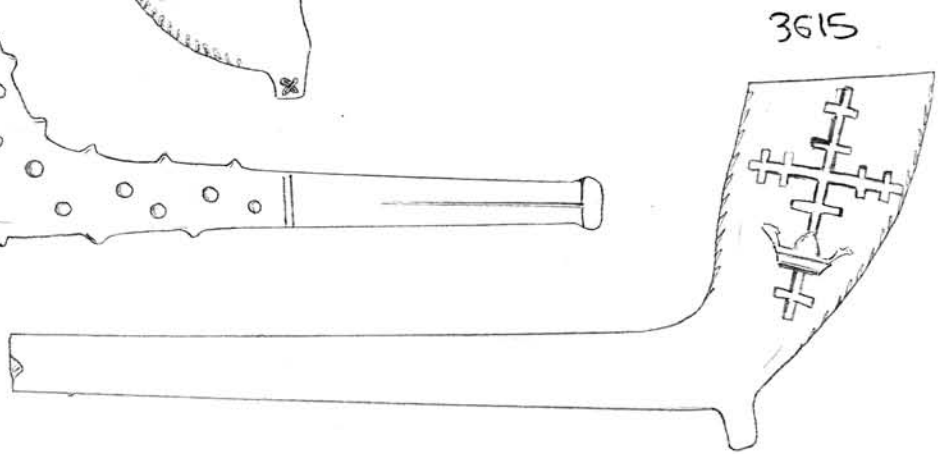
the rather tall bowl) is the old Nottingham Arms, comprising of a large cross and three crowns - two at either side of the top of the cross and one at the base of the cross. The pipe has quite a bit of stem on it and has been smoked a while. It is likely to date from c. 1820-30.

No. 3616 is a Nottingham-made Football pipe - having the characteristic pair of running players on each side and the ball at the back (facing towards the smoker). This one has a star at each side of the spur and well moulded leaves along the bowl seams. The presence of the star on the spur indicates that it is different to the three known types that I discussed on P. 1441 in Vol. 35, and so there must be at least four versions. It was smoked a lot. No. 3617 is a complete spiked pipe, the spikes being small and fairly numerous. It is unsmoked.

Nos 3618 - 3620 are superb detachable bowls - each in excellent condition. Firstly, no. 3618 is a most unusual portrait lady's head by Charles Crop & Sons of London - the head turned sideways instead of facing the front like they normally do. It has been moulded in a two-piece mould - the seam not affecting the face itself of course due to the turned effect. She is wearing a studded and seated shawl over the back of her head and has a large and finely collar. On the stem part is 'C. CROP - LONDON' and 'RD. NO. 326981' on each side. This was registered on October 8th, 1898 along with two other lady's heads pipes (RD No 326979 and 326980). It
1534



3616



1535

1536



is unsmoked and still bears the meerschaum-varnished surface which was a characteristic of Croft's pipes. No. 3619 is a bowl in the shape of what appears to be the head of one of the Boer War Generals - perhaps Kitchener. He has a moustache and a studded collar with lapels. On the stem on one side only, and in relief, is 'RD. No. 352681' and stamped beneath is the 'L.F.' trade-mark of Louis Fiolet. This pipe was registered on January, 31st, 1900 by Thomas Melchoir de Loecker of 42, Tabernacle Street, Finsbury, London, E.C. - clay tobacco pipe manufacturer's agent. Louis Fiolet registered several designs via this agent at the turn of the century, this one being the second. (The first, RD. No. 350122, registered on December 4th, 1899 was the head of a General - probably Buller; See no. 3286 in Vol. 34). The eyebrows and moustache are coloured white and the collar and lapels yellow. The pupils of the eyes are coloured black, as usual. It is un-smoked.

No. 3620 is a very well-made head of Queen Victoria, not surprisingly French-made. She is depicted wearing a crown, which forms a separate piece at the front of the bowl (and therefore very vulnerable to breakage), and a long studded head dress, which is coloured white. The face is well defined, with the pipe being moulded in a three-piece mould, and the eyes are coloured white with black pupils and black eyebrows. There is also a fine trace of pink on the lips. She is also depicted wearing ear-rings, which are coloured yellow, along with a studded collar in the same colour. Stamped in the back of
1537

The bowl is an oval is 'HER MAJESTY'S JUBILEE - 1887' - thus dating the pipe. The stamp is unusual in that the impressed writing and surround are coloured blue. Beneath the stem part is the impressed signature of Gambier, which was one of the trade marks used by this firm. The pipe is un-smoked.

No. 3621 is a simple though unusually-shaped bowl made of brown pipe-clay. It is detachable and appears to be in the shape of a conical beehive or a bird's nest. Stamped on one side of the bowl is the maker's name - 'BONNAUD-MARSEILLE'. For another pipe by the same company see no. 3477 in Vol. 35. It is unsmoked. No. 3622 is a complete 'RAOB' pipe - the bowl having a well marked bull's head on the front with the 'RAOB' motif above. It also has well defined milling around the rim. This example is a late version, which must have belonged to a member of the Association for he has written his initials, the lodge to which he belonged, and the exact date - probably of his inauguration - in ink on the pipe. On the back of the bowl are the initials 'A.J.A.' and on the stem 'THE BOLD ADVENTURER LODGE 5889 - 24TH, JULY, 1935'. It is unsmoked.

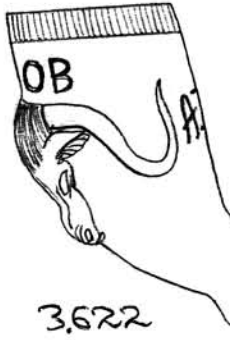
No. 3623 is a plain bowl with no spur. On the stem, on each side, is 'MAC'S CUTTY'. Who or what was Mac? The pipe is unsmoked. No. 3624 is a nice example of a pipe made by William (or Lucy) Hason of Nottingham. Like most of his pipes, the bowl is lined with leaves along the seams

1538

3620



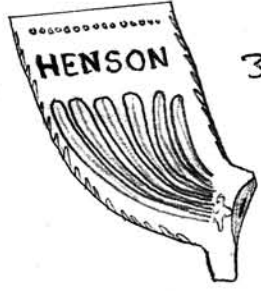
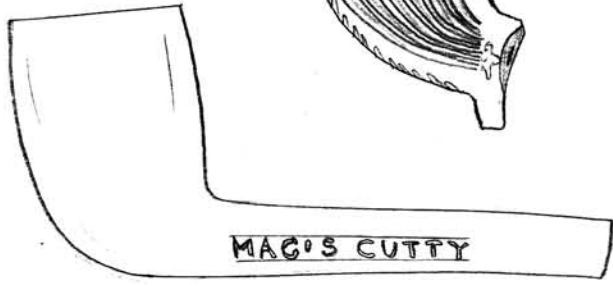
3621



3622

THE BOLD ADVENTURER LOUGE 5989

3623



3624



3625

3626



3627

15391

1540



and a line of dots close to the rim. In relief around the top of the bowl is 'HENSON-NOTTINGM'. This is type 1) illustrated in my paper on 'Pipe-making in Nottingham after 1800' published in *The Archaeology of the Clay Tobacco Pipe*, B.A.R. 100 1982. This example is unsmoked and is the first complete bowl of this particular Henson pipe in my collection.

No. 3625 is a finely moulded head bowl in the shape of General Booth, the founder of the Salvation Army. He was actually born in Nottingham in 1829. The bowl shows his long wavy beard very well, along with his thick wavy hair. He has a long downward curved moustache too. The eyes and brows are coloured black, and even the little wrinkles at the sides of his eyes are shown. On his collar, on each side, is the letter 'S' with a little emblem, of the Salvation Army, and on the stem is the edge of a ribbon which would have contained the words 'GENERAL BOOTH' in relief. Unfortunately the maker of this pipe is unknown, though it is unquestionably French. The pipe is unsmoked.

No's 3626 and 3627 are two more head bowls both in the shape of Queen Victoria. The first depicts the Queen in her early years, with a fresh complexion and her hair tied into a bun. The prominent crown is quite thick. Her hair is also latched around the side of her face and neck towards the bun. The eyes, eye brows and necklace would have been coloured white and a head band below her crown yellow. The colours have partially disappeared now though.

1541

It was smoked a lot. The maker is unknown though once again is undoubtedly French. No. 3627 is a well-moulded head - being rather similar to Cambria but without the crown. The stem curves upwards too, but unfortunately bears no maker's name. She is wearing a long studded shawl and also has a studded collar. She is wearing ear rings too. The bowl is made in a three piece mould again, the face itself forming the third part, with the neck below moulded in the usual way. It is unsmoked.

No. 3628 is a complete and short 'bobbie' type pipe - the stem being very straight and decorated with grooved wavy lines. On one side of the bowl is a sailor holding a flag and on the other side is a paddle steamer. The bowl also has leaves along the seams and no spur. It is unsmoked. No. 3629 is a complete pipe with a lined bowl which also has leaves along the seams. The spur is unusual in that it bears forward with a prominent base. This pipe replaces no. 2295 in Vol. 22 which has a missing spur. It is also similar to no. 3121 in Vol. 33.

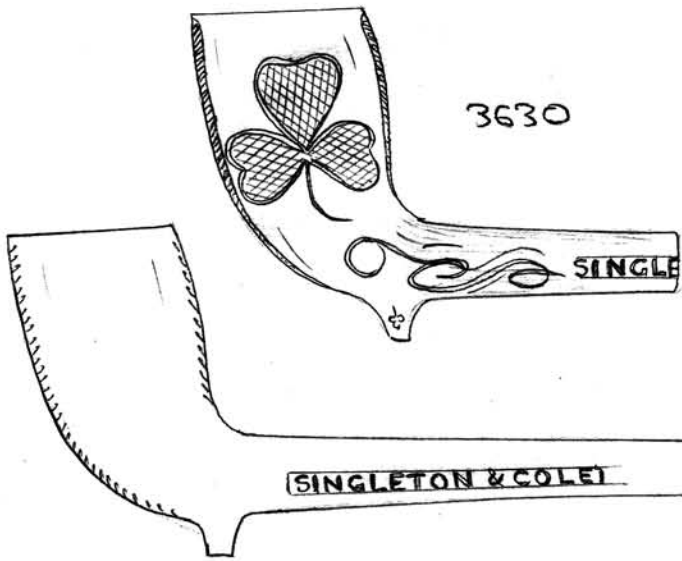
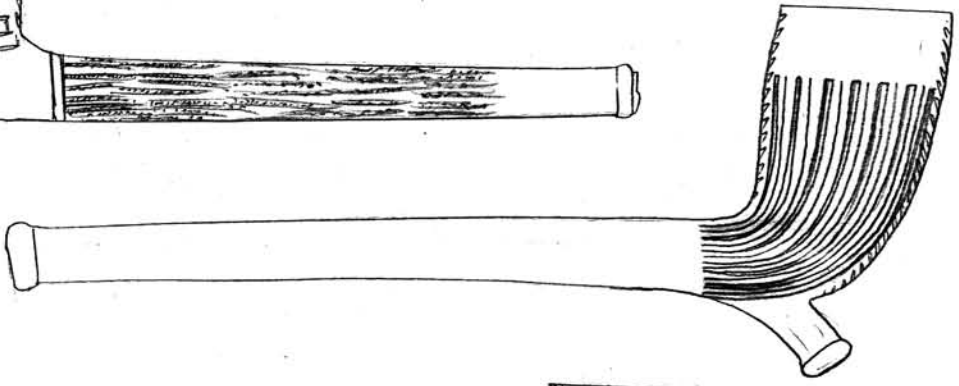
No. 3630 is a decorative bowl with a latticed shamrock leaf on one side and an Irish harp on the other. On the stem is some scroll work and the letters 'SINGLETON & COLE' of Singleton & Cole, Tobacconist Factors of

. It was smoked a while. No. 3631 is a complete pipe by the same firm, being plain with fine leaves along the seams. On the stem is 'SINGLETON & COLE - TOBACCONIST
1542



3628

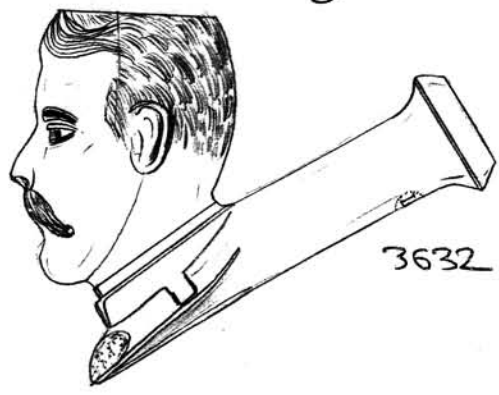
3629



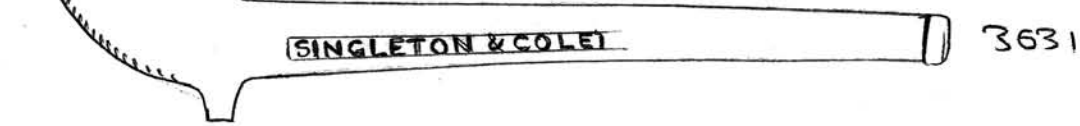
3630

SINGLE

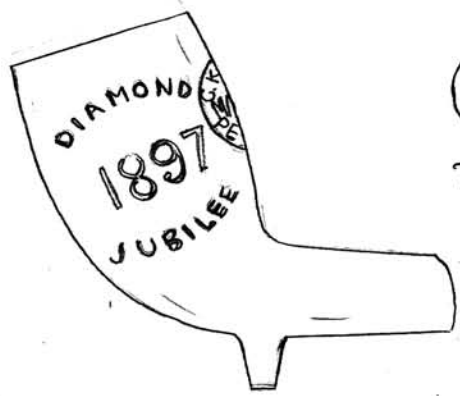
SINGLETON & COLE



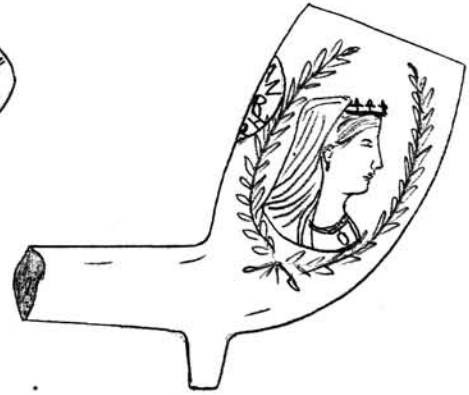
3632



3631



3633



1543

1544



fact ORS'. It is unsmoked. Another pipe bearing the same motif in my collection is no. 2724 in Vol. 28 which is identical to no.

3630 just described only made from a dark grey pipe-clay.

No. 3633 is a Scottish-made Jubilee pipe.

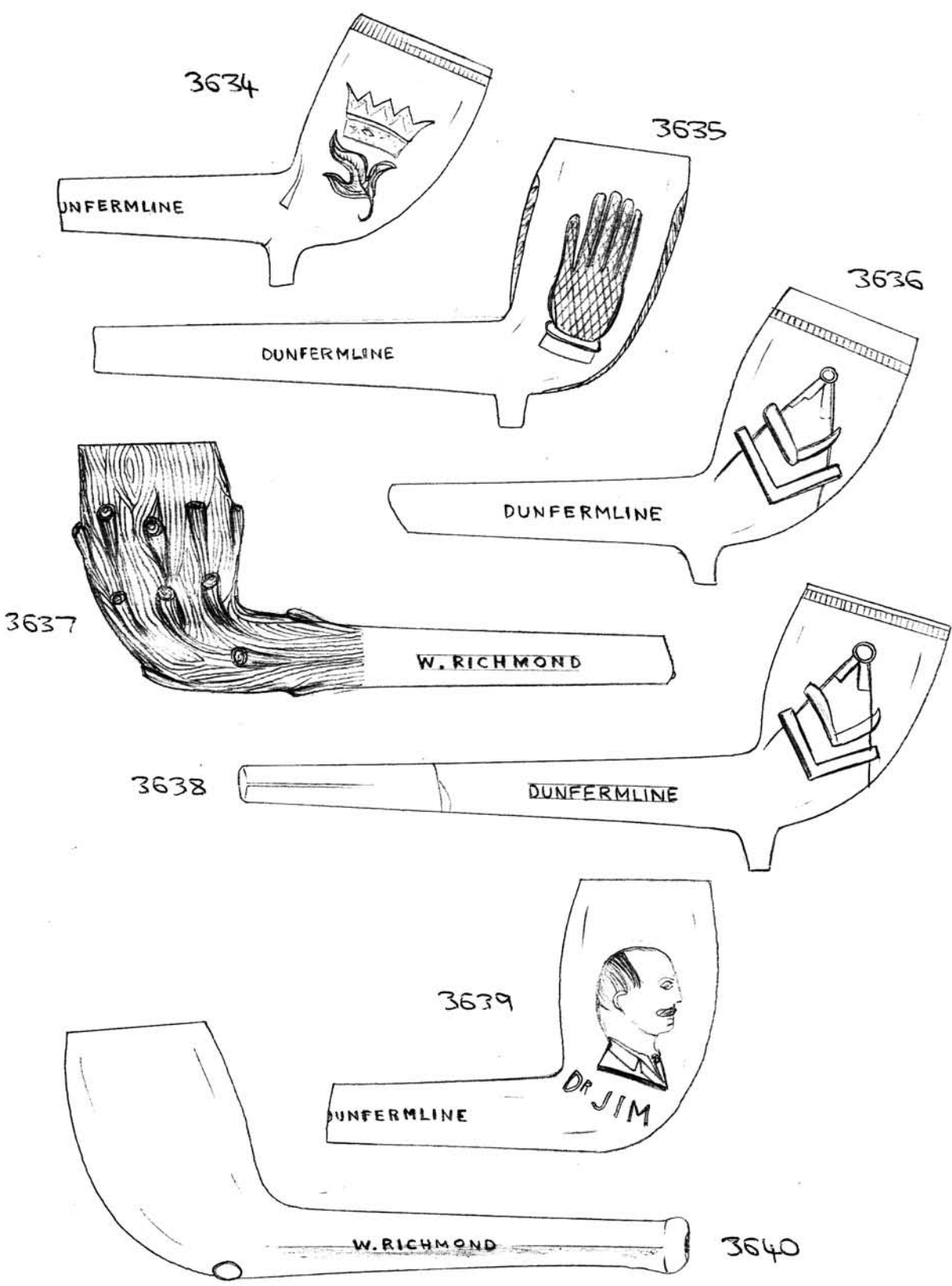
: On one side of the bowl is a bust of Queen Victoria surrounded by sprigs and on the other, in relief, is 'DIAMOND JUBILEE 1897'. Stamped onto the back of the bowl is 'G. KEAN-MAKER - PERTH'. This pipe was also produced by William Richmond of Dunfermline - though I have not yet got an example in my collection. It was smoked a lot.

Nos 3634 - 3640 are all pipes made by William Richmond, including some more masonic examples. No. 3634 has a compass with set square and pining knife on one side and a crown and a leaf on the other - one variation of the Free Gardeners (or Ancient Society of Gardeners) produced in many variations by William Richmond. On the stem is 'W. RICHMOND... - UNFERMLINE'. It was smoked a lot. No. 3635 is an almost complete pipe with a large latticed hand depicted on one side of the bowl and plain on the other. It has leaves along the seams. On the stem is 'W. RICHMOND - DUNFERMLINE'. Similar versions with 'T.W' on the front were produced by William Christie of Leith and an unidentified firm 'S.H. & Co' of Edinburgh. It was smoked a while. No. 3636 is a 'Free Gardeners' pipe with the masonic emblem on one side (compass, set square and pining knife) and the name of a lodge on the other - 'DEATH THISTLE (LOWDENBEATH)',
1545

On the stem is 'W. RICHMOND - DUNFERMLINE'. It seems to have been smoked a while and is rather stained. No. 3637 is a rustic tree-trunk type bowl with no spur. Once again, on the stem, is 'W. RICHMOND - DUNFERMLINE'. It was smoked a lot. No. 3638 is another masonic pipe, this one only having the symbols on one side and being plain on the other. The stem, which is complete, has 'W. RICHMOND - DUNFERMLINE' on it. The pipe was smoked a while. No. 3639 is a tall bowl with no spur. On one side is a man's head (side view) with receding hair and a moustache and with 'DR JIM' below, and on the other side is a flag - with the Union Jack in the top left hand quarter and two 'C's or half moons on the other half. William Christie of Glasgow also produced the 'DR JIM' pipe but I have so far been unable to identify who he was, possibly something connected with the Boer War? On the stem is 'W. RICHMOND - DUNFERMLINE'. It is unsmoked. Finally, no. 3640 is a complete plain pipe with a 'double' spur. The stem, which is flattened, has on it 'W. RICHMOND - THE WORKMAN'. I also have a similar example in my collection with 'W. RICHMOND - DUNFERMLINE' on it. It was smoked a while.

No. 3641 is a similar pipe by a different Scottish maker, but without any spur. On the stem is 'LOWRIE - THE WORKMAN'. It was smoked a while. No. 3642 is another pipe by the same maker, and is a masonic one similar to Richmond's. On one side is the compass, pruning knife and set square

1546



1547

1548



1549



1550



design and on the other two curved ribbons containing the motif 'FREE GARDENERS' with a thistle shown in between. The bowl has milling around the rim. On the stem, within a patterned border, is 'LOWRIE - KIRKCALDY'. It is unsmoked.

No's 3643 and 3644 are almost identical bowls to the latter, with the 'FREE GARDENERS' motif on one side and the masonic design on the other, with the additional feature of a ribbon below it. They both have milling around the rim. No. 3644 has the maker's name on the stem - 'J & C BURTON - CUPAR-FIFE'. No. 3643 had some writing too originally but the pipe maker has erased the name from the mould. However on close inspection part of 'CUPAR' can be seen, indicating that the mould originated from J. & C. Burton, as mentioned. The bowls are also identical in every way except that no. 3644 is taller. This means that the mould must have been shortened by the subsequent makers. Both pipes were smoked a white.

No. 3645 is a complete plain pipe with a 'double-spur'. On the stem is 'THOMSON & PORTEOUS - EDINBURGH', who were tobacconists. It was smoked a white. No. 3646 is a crude and thick bowl made to commemorate the Coronation of George V in 1910. On one side is a bust in shallow relief and on the other side is 'KING GEORGE V' in relief. There also appears to be a blanked out name on the stem. It was smoked a white.

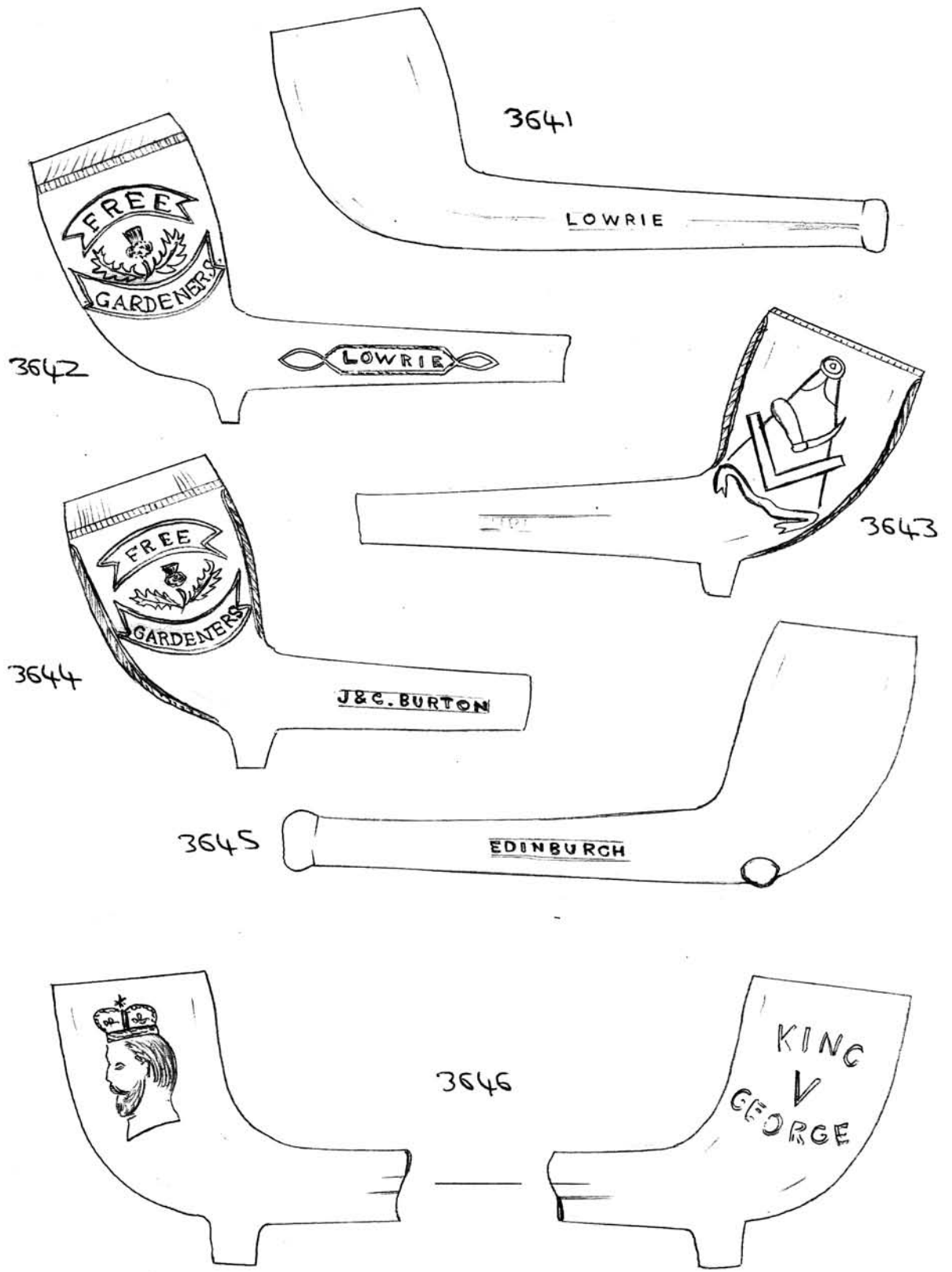
No. 3647 is a plain bowl with a transfer-printed
1551

stamp on the back of the bowl depicting a unicorn or horse with the word 'HOTEL' below - probably for The 'Union Hotel' or 'White Horse Hotel'. The pipe may well be of Brouley manufacture. It is unsmoked (No. 3648 is a plain bowl) with an impressed stamp along its stem saying 'H. (?) CLEEVER - BIRM.M.'. It is rather stained and has been smoked a while.

No. 3649 is a complete Southern pipe, being of the "bulldog" style with widening bowl and diamond-shaped stem. Stamped onto the stem is 'W. SOUTHORN & Co - BROSELEY 8' - of William Southern & Co. The pipe was smoked a lot.

No. 3650 is a small Hussar's head bowl with some leaves along part of the stem. It is unsmoked. Unfortunately there is no clue present to identify the maker of this pipe. No. 3651 is a small bowl decorated with a swirling mottled design. The pipe has no stem and has been smoked a little. No. 3652 is a claw bowl, rather crudely made, with a faintly impressed maker's name along the stem, namely 'TAYLOR & Co' - 'MILE END'. It has been smoked a lot. No. 3653 is a small 'RAOB' bowl with an impressed stamp on the back saying 'I. BURCH - LONDON'. A star is depicted within the centre of the maker's mark. The bowl was smoked a while. No's 3654 to 3657 are all plain pipes bearing identical maker's stamps - no's 3654, 3656 and 3657 on the back of the bowl, and no. 3655 on the front. Each stamp consists of a semi-circle shape saying 'DAVID POSENER - CITY ROAD LONDON'. Apparently a considerable quantity of these pipes were recovered from a dump in Essex, probably rejects

1552



ISS31

1554



from Passer's factory? Each pipe was unsmoked. Of interest is the fact that nos 3654, 3655 and 3656 are made of brown clay, and that nos 3654 and 3657 incorporate 'plug' filters in the bases of the bowls.

No. 3658 is a decorative Christmas pipe, the bowl being identical to no. 889 in Vol. 10. Each side of the bowl bears designs of holly leaves and mistletoe and the head of St. Nicholas is depicted on the base of the bowl. Along the stem is 'HARR..... - RISTMAS', which would have said 'HARRISON-HIGHGATE, MERRY CHRISTMAS'. It is unsmoked. No. 3659 is an ingeniously designed pipe - the bowl being shaped as a thumb with the nail depicted on the front! No maker's name is present though there is a number '76' on one side of the stem. It is unsmoked. No. 3660 is a short complete pipe with a spiced decoration on the bowl and along the front, in relief, the letters 'LCTU' - presumably a trade union of some sort. The pipe has leaves along the seams and a raised rimmed decoration around the rim. It has no spur.

No. 3661 is a splendid Fiolet pipe depicting the lady sitting on a patty. Most of the stem is still intact and because the pipe is in such good condition it has replaced my previous two examples, which were nos.

Along the stem is 'L. Fiolet à St. Omer FRANCE'. Parts of the bowl are glazed (black legs, yellow shoes, green ribbon around the back and pink-coloured hair). It was smoked a lot. No. 3662 is also a Fiolet pipe, this being a plain bowl with a short curved spur. Along the stem part, within a decorative border

1555

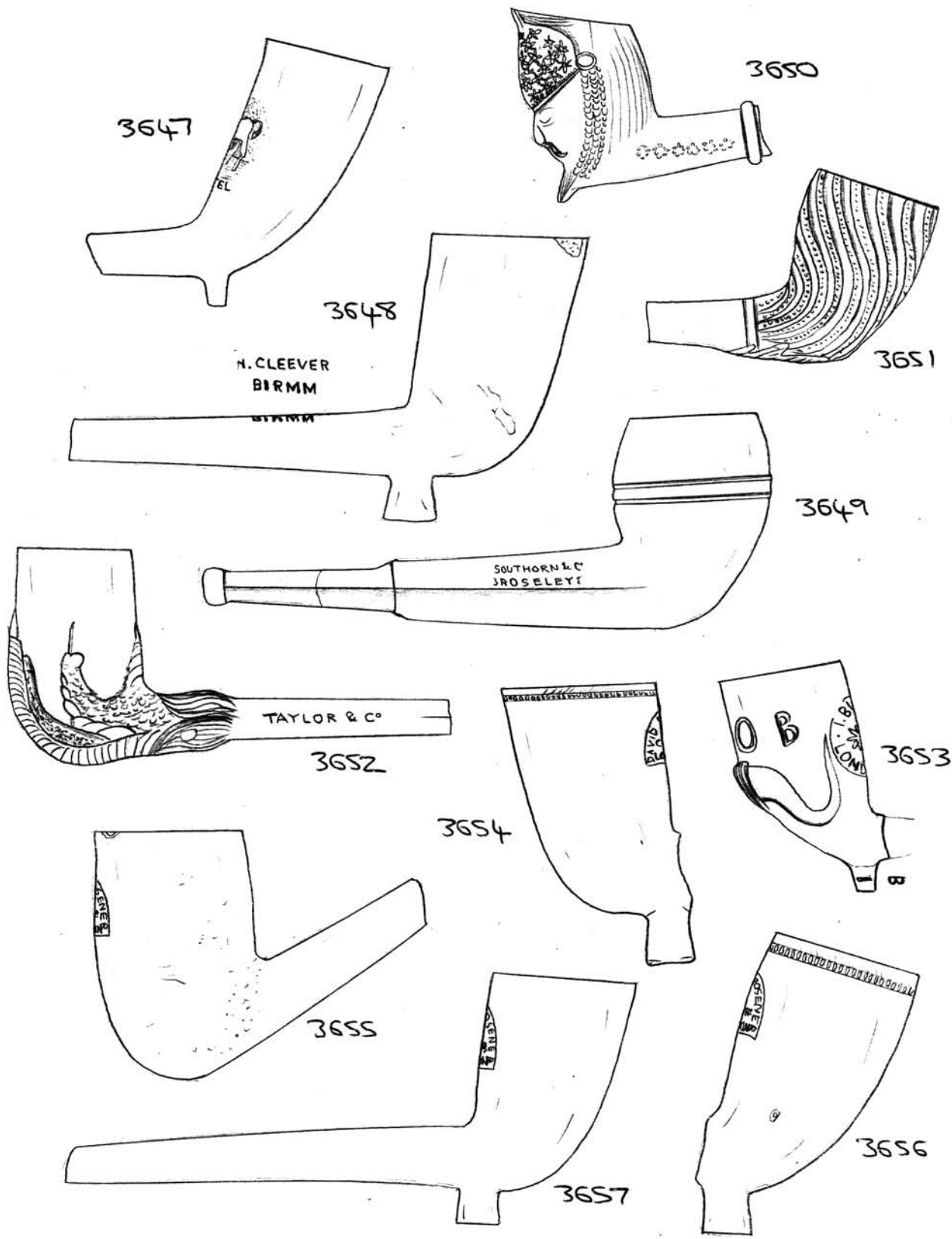
i 'L. FIOLET - ST. OMER', The bowl is detachable and bears a rounded copper cap where the vulcanite stem would have joined. There is a chip on the rim and it was smoked a lot.

No. 3663 is a superb French detachable bowl depicting a human hand holding a toby jing. Around the cuff part in relief is 'DUMERICIL - 2133'; Dumeril was also of St. Omer. The bowl does not appear to have been smoked. No. 3664 is a plain bowl with a completely flat base which also extends along the stem. It has no spur and was smoked a lot. The clay that it has been made from is rather soft and therefore the pipe appears rather worn.

No. 3665 is a Scottish bowl produced by the firm of William White & Son of Glasgow. It is of the laced / dotted style and has 'W. WHITE - GLASGOW' impressed along the stem with 'P P 73' in relief. It is rather stained and was smoked a lot.

CONTINUED ON PAGE 1564

(3653 replaced 11/1/86 with an example with spur)



1558



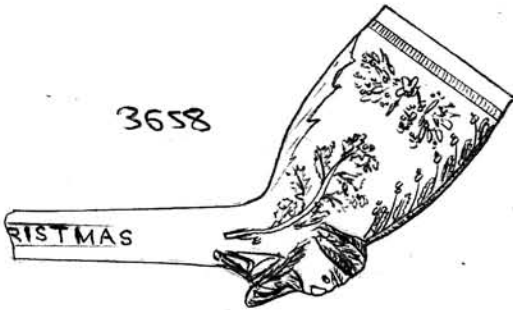
is 'L.FIOLET & ST.OMER'. The boat is detachable and bears a
corroded copper cap where the vulcanite stem would have joined.
There is a chip on the rim and it was smoked a lot.

1559

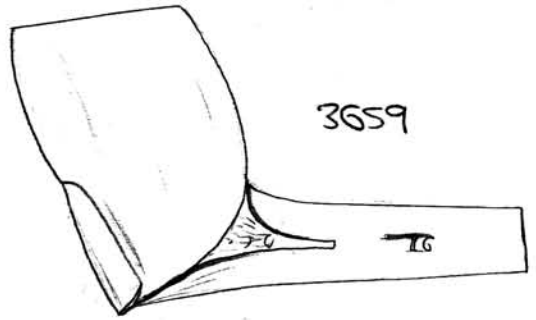
1580



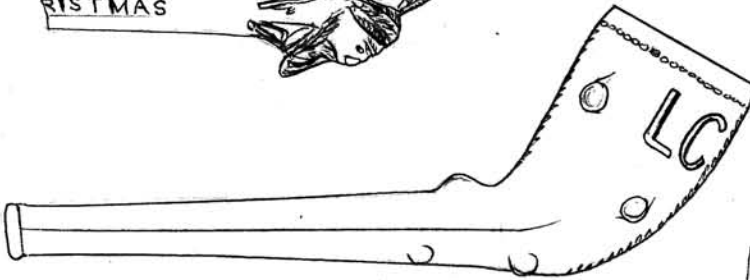
3658



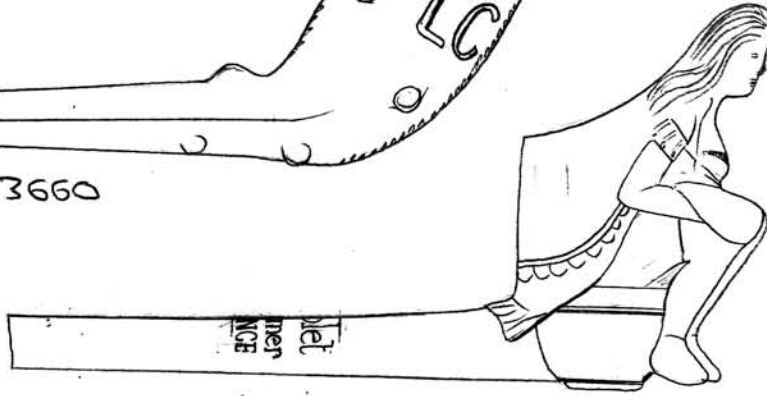
3659



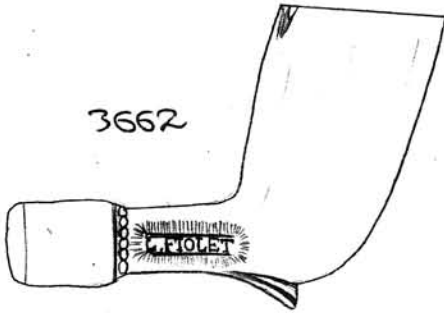
3660



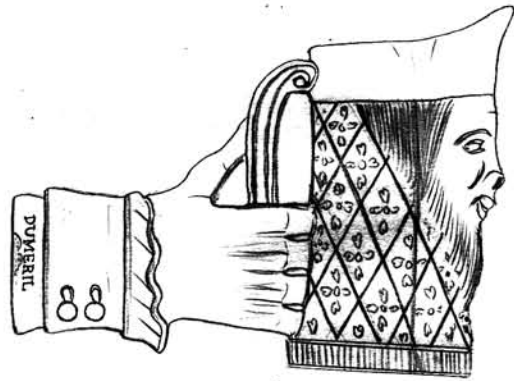
3661



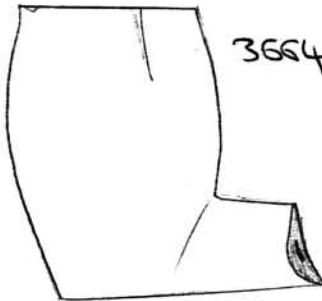
3662



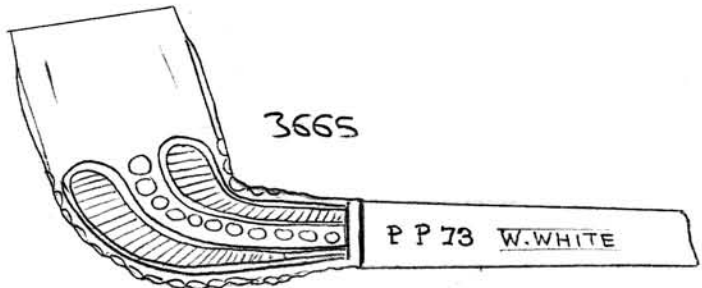
3663



3664



3665



1561

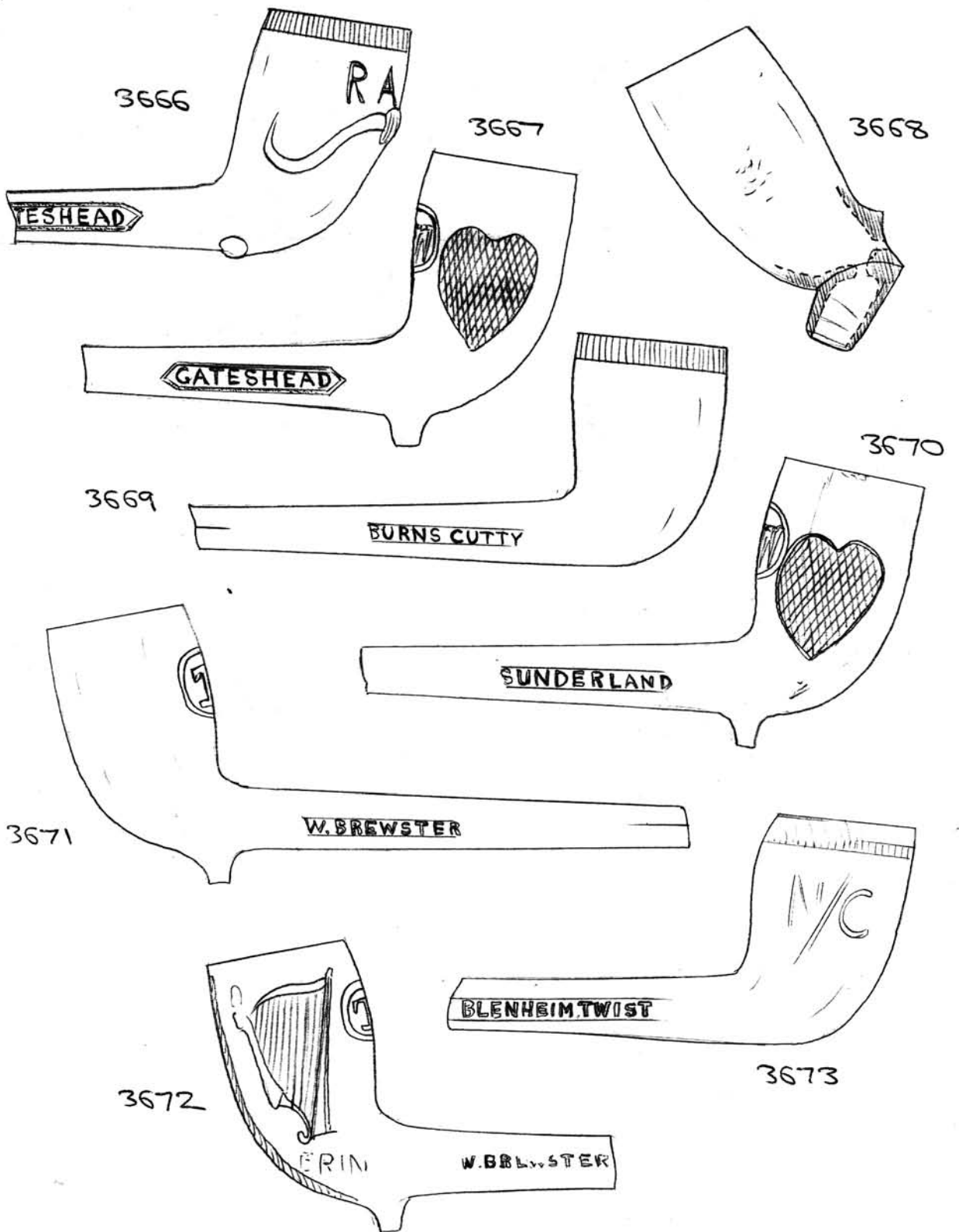
1562



[Faint, illegible text, likely bleed-through from the reverse side of the page]

1563

- 3666 - RAOB bowl with "double-spur". G.STONEHOUSE - GATESHEAD' on stem. By George Stonehouse. Similar to no. 3385 by F.J. Fin of Gateshead and no. 3501 by Hamilton of Gateshead - indicating that these contemporary makers either copied each others' styles of pipes or that they purchased their moulds from the same source. Well smoked.
- 3667 - 'T.W' bowl with latticed heart on one side; plain on other. 'G.STONEHOUSE - GATESHEAD' on stem. Well smoked.
- 3668 - Plain bowl with unusual cavity spur to allow for a removable cap for removal of moisture etc. Well smoked
- 3669 - Plain bowl with milling and no spur. 'W.BREWSTER - BURNS CUTTY' on stem. Well smoked.
- 3670 - 'T.W' bowl with latticed heart on one side; plain on other. 'W.BREWSTER - SUNDERLAND' on stem. Unsmoked.
- 3671 - Same design as 3670 but the town name is omitted from the stem. Well smoked.
- 3672 - 'T.W' bowl with Irish harp on one side and shamrock leaf on other. 'ERIN' faintly below harp. Leaves along front seam. 'W. BREWSTER - SUNDERLAND' along stem. Well smoked.
- 3673 - Plain bowl with milling; no spur. 'ROBERT SINCLAIR - BLENHEIM. TWIST' on stem, and initials 'R/S' on one side of bowl and 'N/C' on other - each in relief. Robert Sinclair was a prominent tobacconist in Newcastle-upon-Tyne.



1865

1566



1567



3674 - Heavy, laddered bowl with 'CHRISTIE - GLASGOW' along stem. Well smoked.

3675 - Varnished claw bowl with steel-mounted vulcanite stem. On one side of the claw close to the base is impressed 'Scotland', and on one side of the metal mount is an elongated diamond shape containing the initials 'D.M.D.' with 'SCOTLAND' below. Made by Duncan McDougall & Co of Glasgow. Chip on one of claw talons. Well smoked.

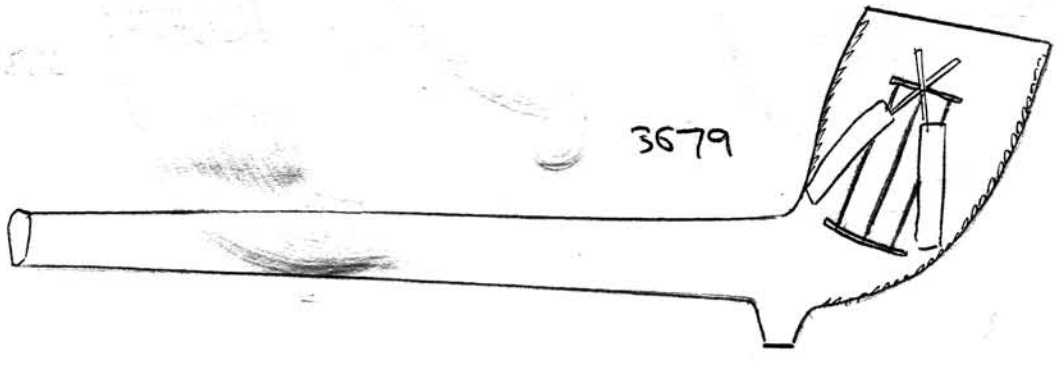
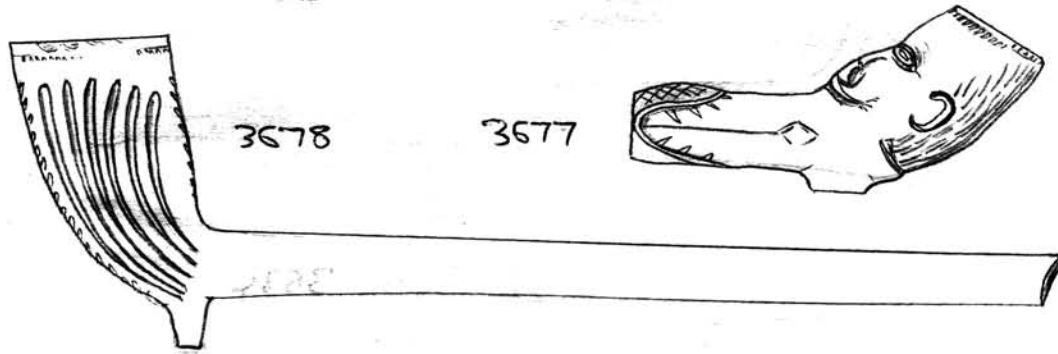
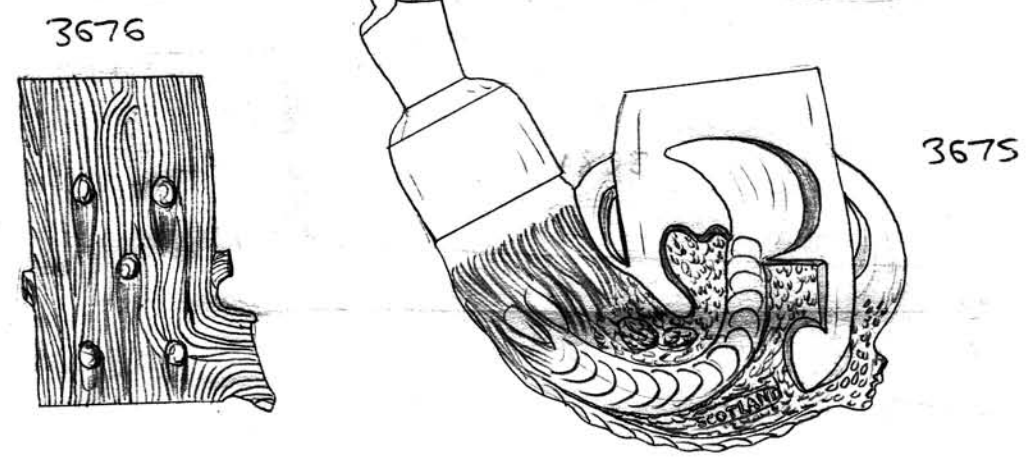
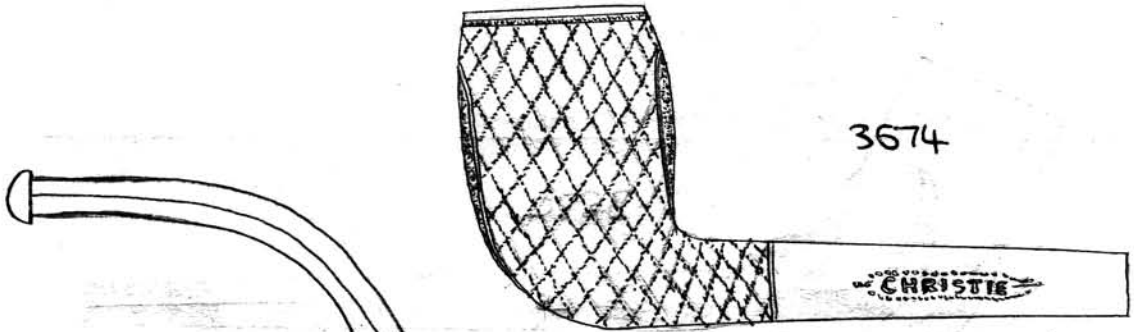
3676 - Tree-trunk type bowl. Slightly stained and smoked a while.

3677 - early Jones pipe found myself in unrefined material beneath High Pavement School, Nottingham. First example known in the East Midlands. Likely to be either a Dutch import or a copy of such and dates from c. 1620-30. Good condition; unsmoked.

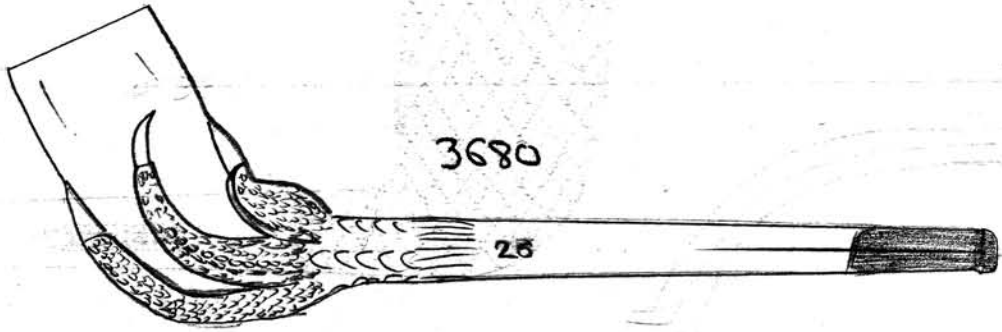
3678 - Lined Nottingham-made bowl found beneath floorboards of 114, Elford Rise, Nottingham. c. 1840. Well-smoked.

3679 - complete pipe with crossed cricket bats, stumps and a ball on one side of bowl and a trophy cup on the other. No writing. Leaves along seams. Rust stain at base of bowl / part of stem. Unsmoked.

1568

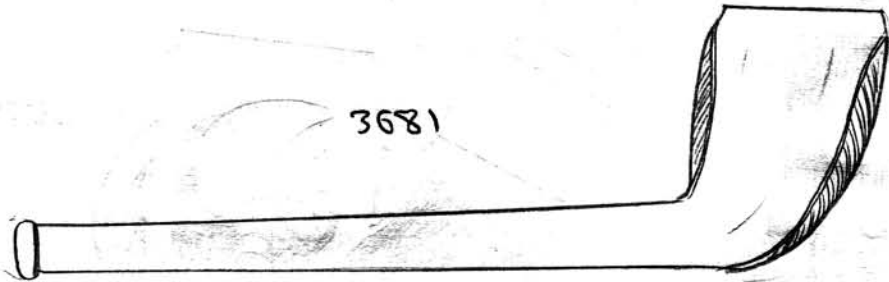


1589

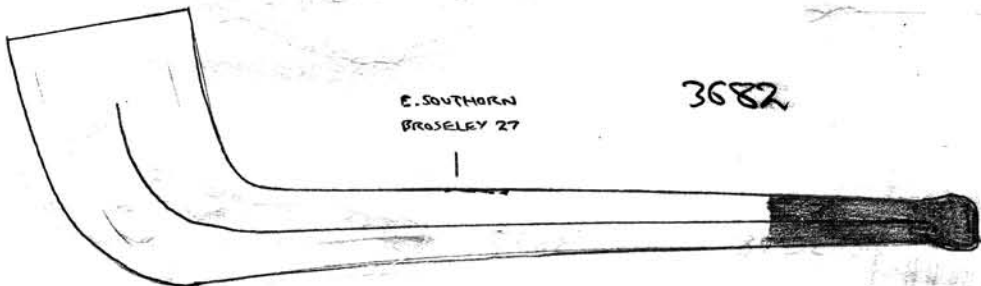


3680

28

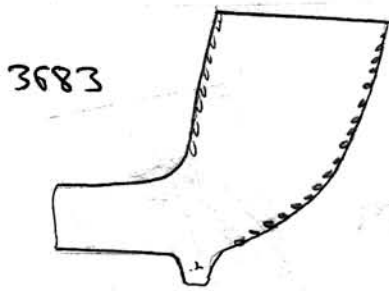


3681



3682

E. SOUTHERN
BROSELEY 27



3683



3684

NEWARK



3685

NEWARK

1570



3680 - Complete claw pipe. Paper stuck around mouthpiece. No. '26' on stem - indicating the pipe was produced by Joseph Holland & Sons of Handster. The pipe is described in their catalogue as "straight claw". Well smoked.

3681 - Complete plain pipe with a leaf along each seam. Unsmoked

3682 - Complete plain pipe with coloured mouthpiece. 'E SOUTHERN BROSELEY 27' stamped on stem. Unsmoked.

PIPES BY INGRAM HAW OF NEWARK

These bowls were found behind 41, Albert Street, Newark during the erection of a garage in February 1983 and in the ownership of Mr. Robert Hardy, grocer. Many others were also found plus sagger material etc but the handful of bowls drawn here were the only ones that had been retained by Mr. Hardy.

3683 - Plain bowl. Downward-pointing leaves along seams. Faint lines on other side. Unsmoked.

3684 - Decorated seams with globular spur. 'I. HAW - NEWARK' in relief around top of bowl. Unsmoked

3685 - Knifed bowl (nine lines on one side, eight on other) with leaves along bowl seams. Shield on spur. 'I. HAW - NEWARK' around rim.

3686 - Plain bowl, crudely made. Unsmoked. (P.T.O)

3687 - Decorated bowl with wheat-sheaf on one side and hanging sheep or lamb on other - each surrounded by wreaths. 'I. HAW - NEWARK' around rim. Star on spur. See no. 1097 in Vol. 11 by Starr of Gantham. Unsmoked (P.T.O)

EXCAVATION OF NEWARK PIPE KILN SITE - NOVEMBER 1983

Following the acquisition of the pipe found behind 41, Alport Street, Newark I obtained permission to excavate some bare ground behind 39, Alport Street (next door) and discovered successive layers of kiln waste - mainly the product of William Edmunds, pipe maker. In addition several bowls by other makers were also found, including Smitt and Haw of Newark and Cutbert and Page of Grimbrough. The types found were as follows:-

3688 - Small lined bowl with leaves along seams. Spur slightly back - ward pointing. 'EDMUNDS - NEWARK' around rim in relief. Eight of these bowls were found.

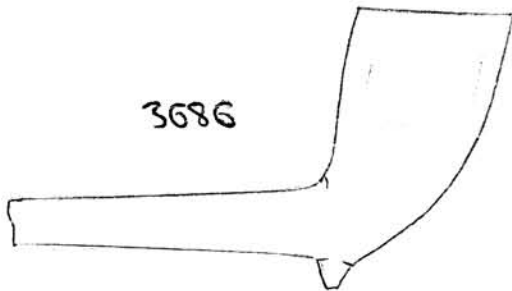
3689 - Lined bowl with leaves along seams - lines well defined. 'TURPIN - NEWARK' in very faint relief around rim of bowl, indicating that Edmunds must have acquired a mould formerly used by the Turpin family (probably William Turpin who died in 1832). Twenty-one of these bowls were found.

3690 - Similar bowl to 3688 but taller with more room around the rim. 'EDMUNDS - NEWARK' around rim in relief. Note that some of the letters are reversed. These bowls varied in their definition of detail according to the care or clay used in moulding - 153 of these bowls were found altogether.

3691 - Similar bowl to 3690, retained because it has been fired slightly longer and is therefore slightly smaller in size.

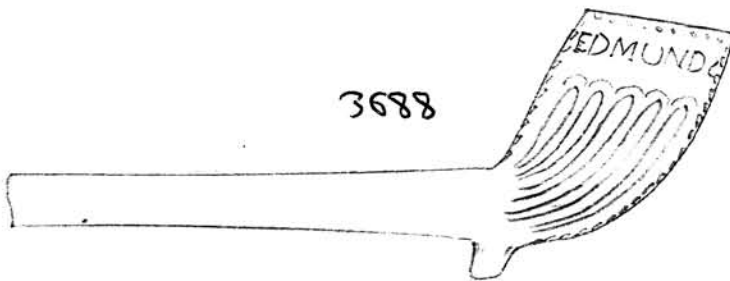
3692 - Plain bowl with very faint widely-spread leaves along front seam only. Forty-one of these bowls were found.

3686

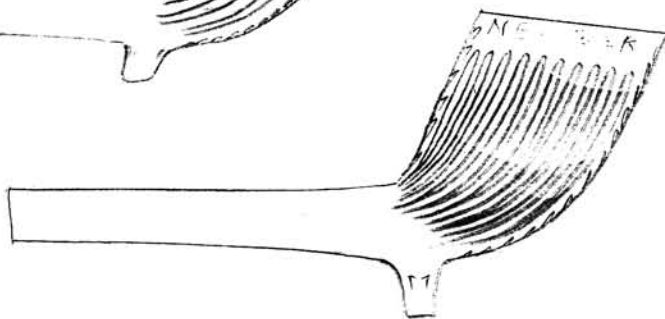


3687

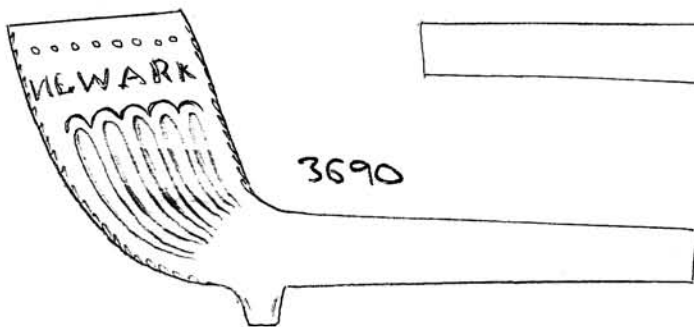
3688



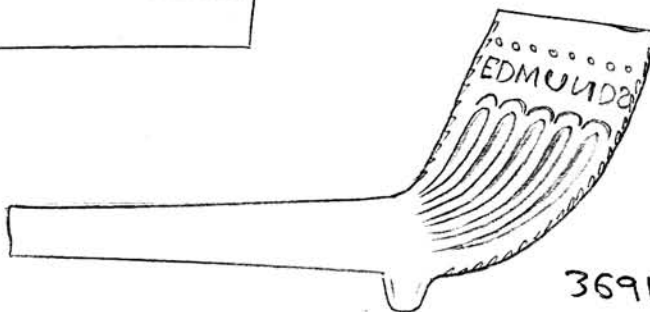
3689



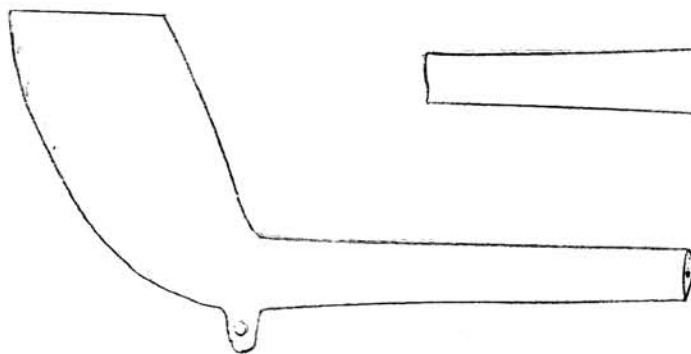
3690



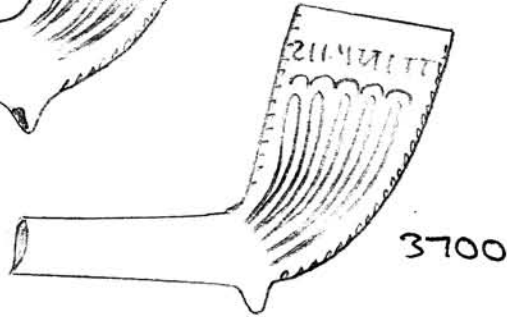
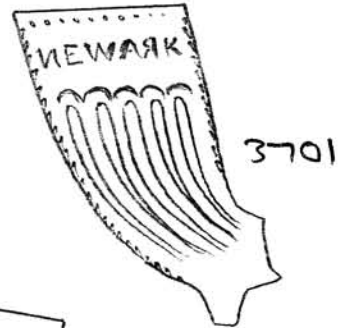
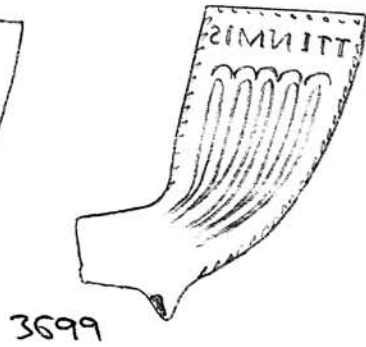
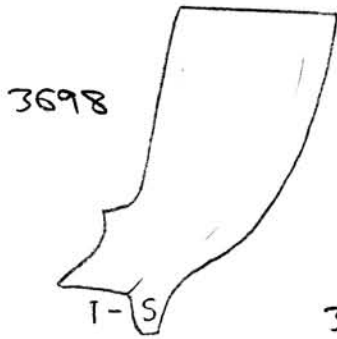
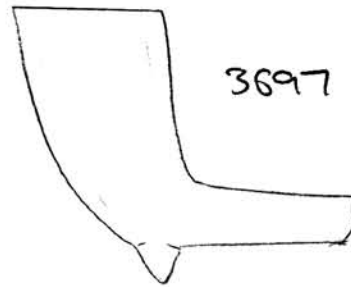
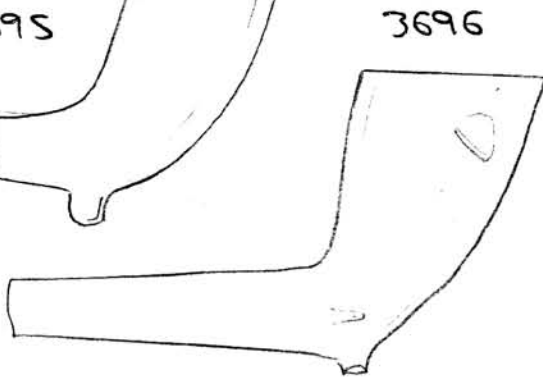
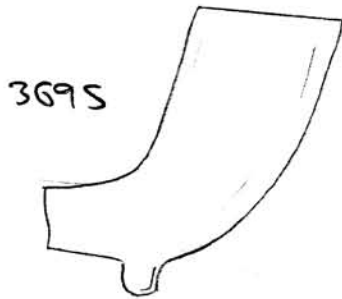
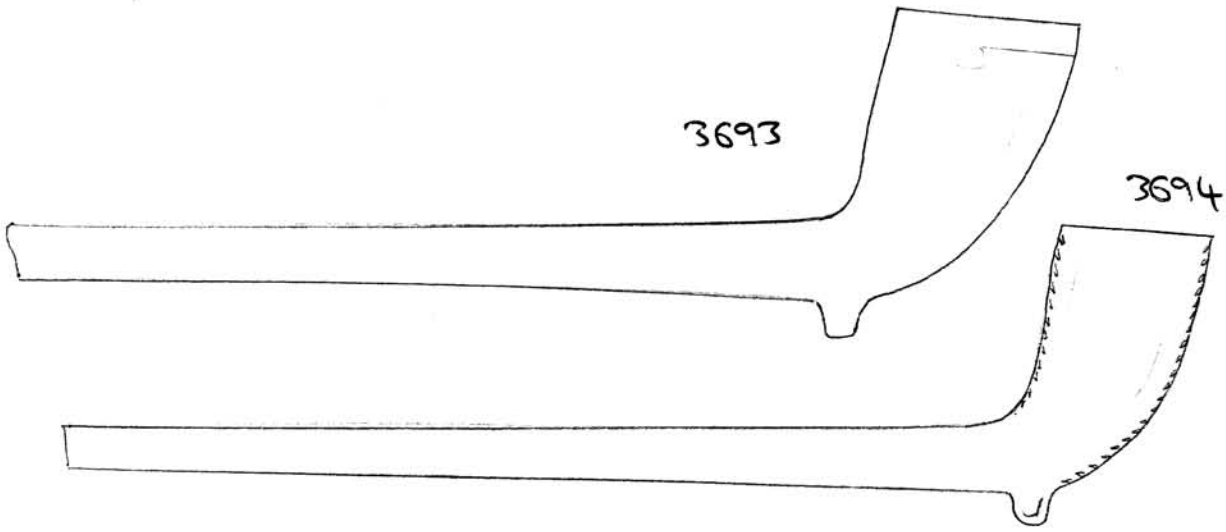
3691



3692



1573



1574

3693 - Plain bowl with very faint rim-line. As with the lined bowls the sizes of these pipes varied slightly according to the degree of firing. A staggering amount of 484 of these bowls were found altogether.

3694 - Plain bowl with downward-pointing leaves along seams. Very faint widespread lines on one side only (numbering about five). 196 of these bowls were found.

3695 - Plain bowl with faint lines on one side as in latter type, but with no leaves along seams. 41 of these bowls were found.

3696 - Plain bowl with unusually straight sides, widening considerably towards top. Small spur. An imperfection in the mould is apparent with this type with some faint blotches appearing on the sides of the bowl in the surface. Only 5 of these bowls were found.

3697 - Smaller plain bowl, poor quality. Only one of these was found. Possibly made by another maker other than Edwards. This example has a chip near the rim on one side. Probably made by Han - see no. 3686.

3698 - Plain bowl with initials 'IS' on spur - of John Lyne Simmitt, who died in 1873.

3699 - Lined bowl with leaves along seams. 'SIMMITT - NEWARK' around rim, with dots above. Note that some of the letters are reversed. Twenty bowls made by Simmitt were found altogether (mainly lined).

3700 - Lined bowl similar to 3699 but decoration and writing generally slightly less well defined. The 'R' in Newark is the correct way round in this pipe and the 'M' in Simmitt is upside down. See no. 2501 in Vol. 24.

3701 - Identical to 3699.

3702 - Plain bowl with initials 'I.H.' on spur - of Ingram Haw.

This was the only identifiable pipe found by this maker, rather strange considering that this kiln site was found only two or three feet from that of Ingram Haw already described. This indicates that either their kiln site was tipped at different periods of time or that the makers had no contact at all.

3703 - Decorated bowl with kneeling slave and standing figure (of Liberty?) on other. Many small leaves along seams. 'CUTHBERT - GAINSBORO' around bowl rim in relief - of Thomas Cuthbert. This was the only bowl found by this maker.

3704 - Faintly decorated bowl with masonic symbols on one side and an open book on other. Leaves along seams. 'PAGE - GAINSBORO' around very top of bowl in faint relief. See no. 744 in Vol. 9 for a much more well-defined example. This was the only bowl found by this maker.

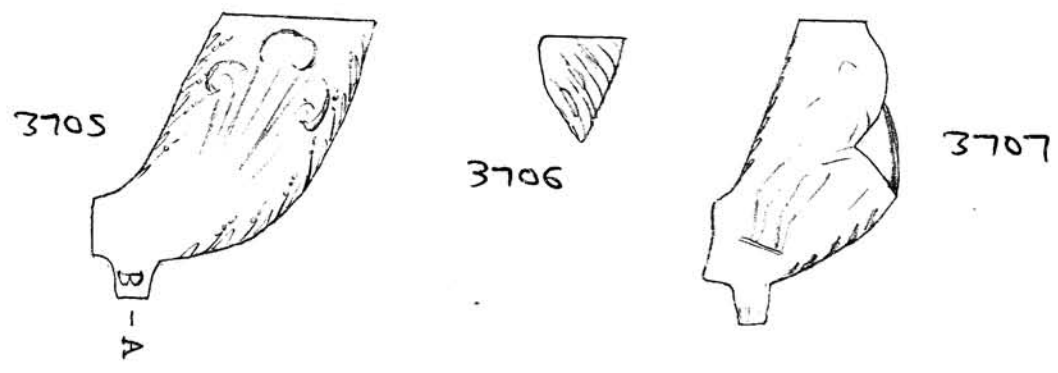
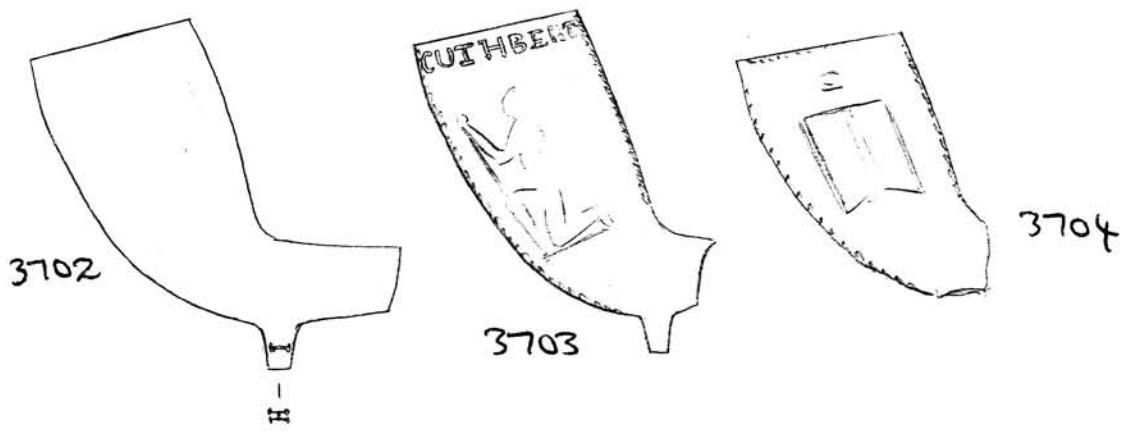
3705 - Decorated bowl with alternate leaves and ears of corn along seams and a Fleur de Lis on each side. Initials 'A.B.' on spur - maker unknown. A fragment was also found of the same style. Both were badly burnt.

3706 - Decorated fragment of a bowl, with alternate long ears of corn and grass along bowl seam. Maker unknown.

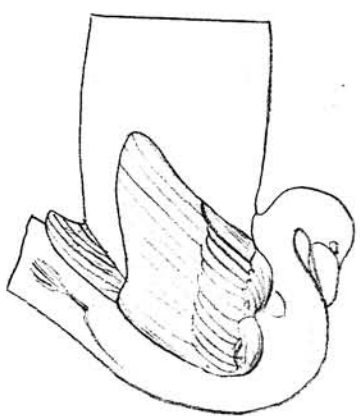
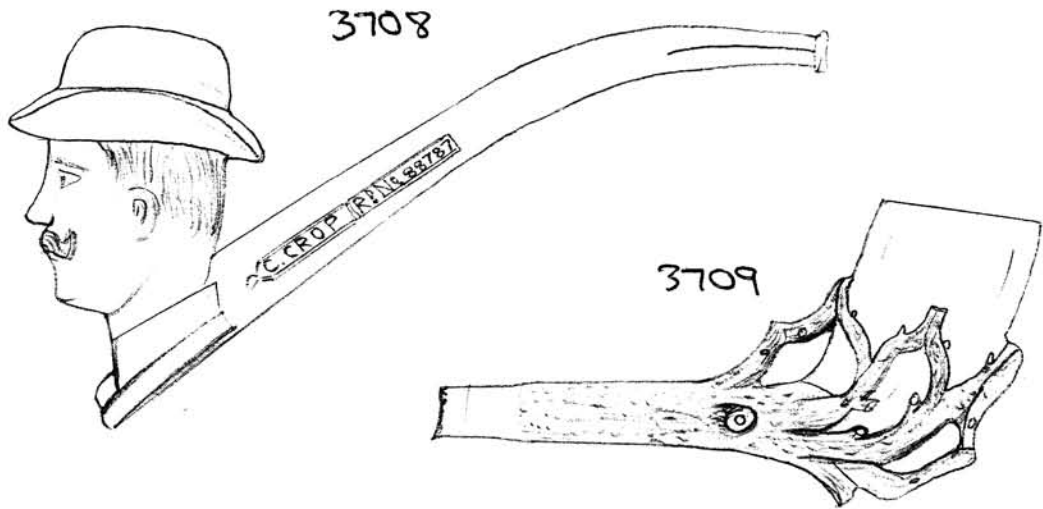
3707 - Decorated fragment, depicting a poorly-moulded figure standing on each side of bowl. Leaves along seams. Maker unknown. One example found.

In addition a late nineteenth century 'FOR OLD LANG SYNE' bowl was found in the top soil. Altogether, 952 bowls were recovered from this excavation, a detailed archaeological report of which will be published later.

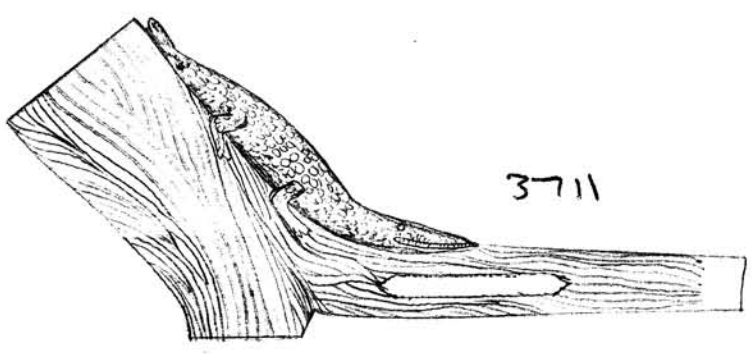
1576



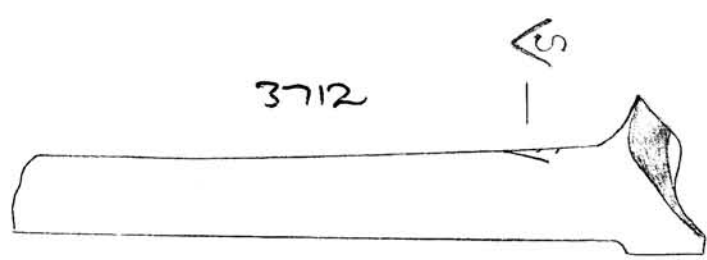
1577



3710



3711



5578

3708 - Complete pipe with bowl shaped as a man's head wearing a bowler hat. Has moustache. 'C. CROF - LONDON' on stem with 'RD. NO. 88787' on both sides. Charles Crof & Sons registered this design on 5th, December, 1887 and it could possibly represent Henry Morton Stanley, the famous explorer who was rumored to be dead at the time (news came one year later that he was still alive). The pipe is well-smoked and has been varnished.

3709 - Dutch-made pipe with the stem shaped as a branch with the bowl being held with smaller branches. Just where the stem is broken can be read 'Goedewagen'. Unsmoked.

3710 - Bowl with base shaped as a swan. Decoration unfortunately rather worn. Possibly made by Habuwer Gummi-Kamm Company of Germany who registered such a design on 22nd, April, 1895 (RD. NO. 253516). Smoked. Swan possibly varnished brown at one time.

3711 - Decorative bowl in shape of a tree trunk with flat base. A crocodile is depicted down the back of the bowl with its head on the stem. There is a blanked-out name and number on the stem (possibly originating from Thomas Holland of Manchester). Well-smoked.

3712 - Early eighteenth century stem stamped with the famous V mark - apparently originating in Lincolnshire but maker still unidentified.

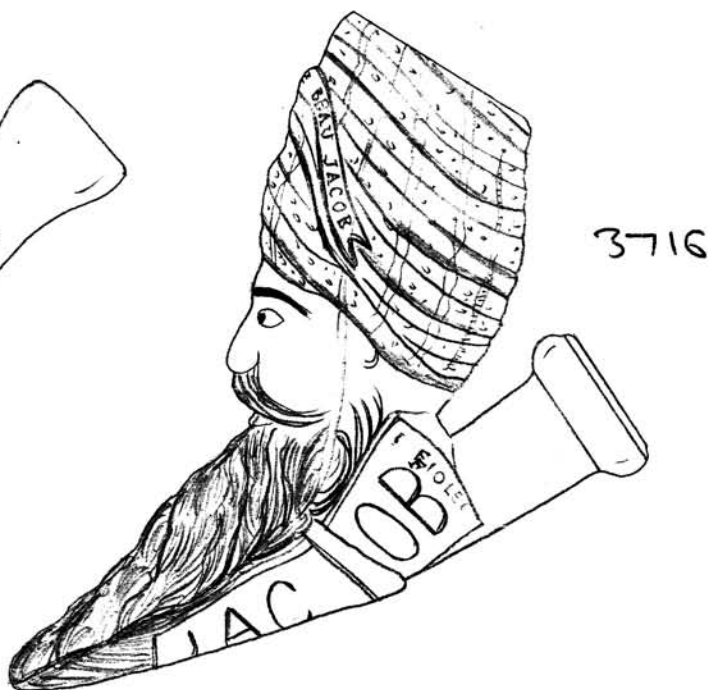
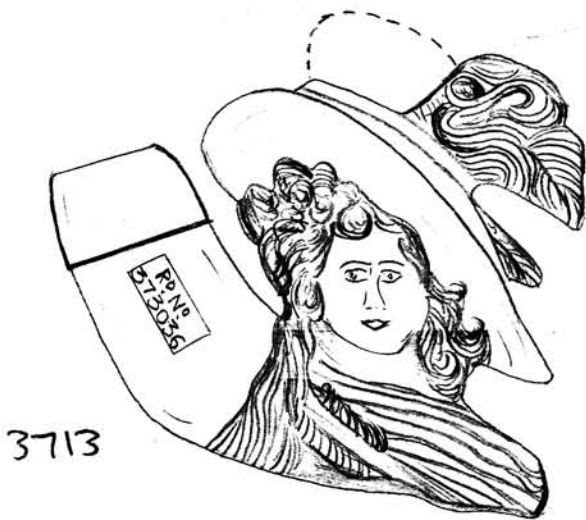
3713 - Detachable bowl in shape of lady's head - now known to be the Duchess of Gloucester. This pipe was registered by Charles Croft & Sons on 20th, April, 1901 and was one of two versions made of this design - for the other one see no. 3595 in this volume. On the stem part of the pipe is 'C. CROFT - LONDON' - 'RD. NO. 373036'. Part of the feathers on the hat are missing on this particular pipe. It has been varnished and is well smoked.

3714 - Detachable bowl in shape of lady's head, again wearing a feathered hat. On stem part is 'C. CROFT - LONDON', and stamped beneath the bowl in a shield-type border is 'HAYWARD - LONDON' - presumably a tobacconist. These pipes must have been commissioned by Hayward for his name to be impressed onto the pipe during moulding. Well-smoked.

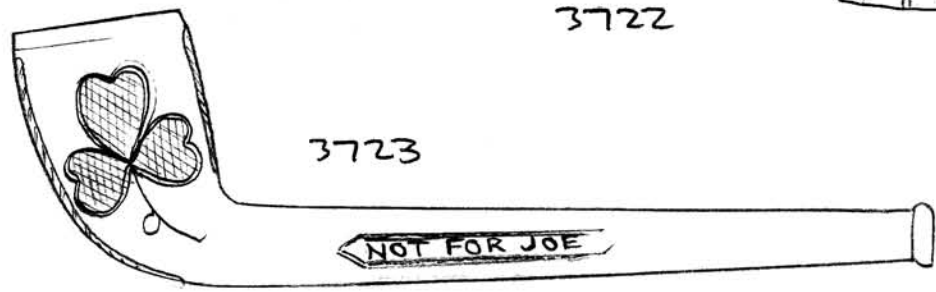
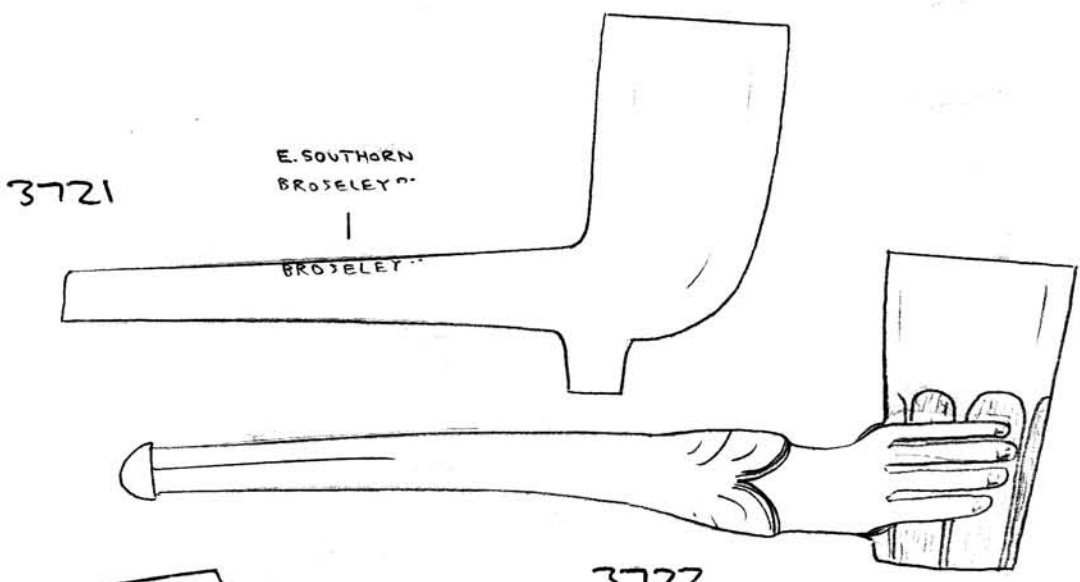
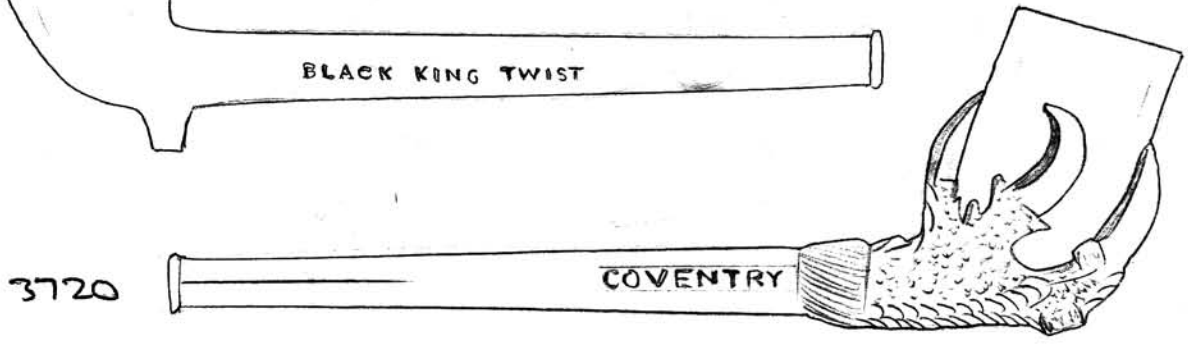
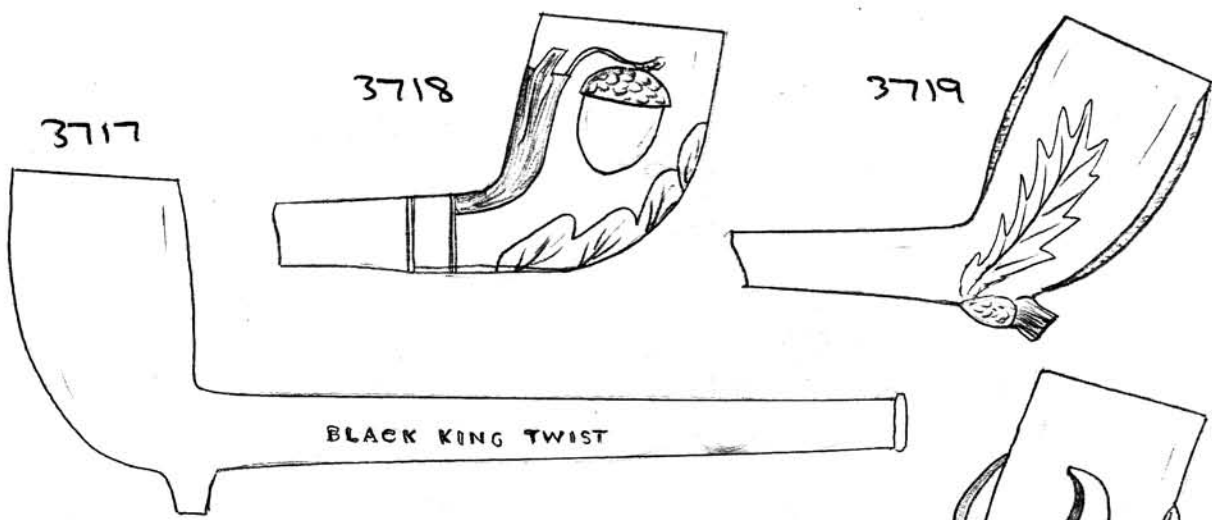
3715 - Rather a simple head bowl, depicting a man with a rather floppy hat. On the stem part, in poor relief, and with some of the letters reversed is the name 'DAN LENO' - a famous Victorian comedian and actor (real name George Galvin) who was particularly popular in the 1890's. It is obvious that the design was originally meant to be someone else but the pipe maker has put this name on later. Well smoked and heavily tarnished.

3716 - Very large Fiolet Jacob (mini 'L.F.' stamp beneath). In good condition and unsmoked. No '785' on other side.

1580



1581



1582

3717 - Complete plain pipe with 'BLACK KING TWIST - OLD CHARLEY SMOKING' on stem. Similar to no. 2609 in Vol. 26 and is even likely to be from the same mould but is slightly smaller in size due to longer firing. Unsmoked.

3718 - Suspended acorn depicted on each side of bowl with a crude oak leaf along front. Smoked a while.

3719 - Thistle depicted as spur of pipe with leaf on each side. Grooved line along each seam. Stained slightly and well smoked.

3720 - Complete pipe with bowl held by a crudely moulded bird's claw. 'H. SMITH - COVENTRY' on stem, of Henry Smith, a Coventry pipe-maker up until at least 1907. See no. 1523 in Vol. 15 for a similar pipe. The pipe is slightly stained and has been smoked a while. The mouthpiece still bears remains of red paint on it.

3721 - Almost complete plain pipe with stem stamped 'E SOUTHWORN - BRUSELEY' and a number that is not readable. Just where the stem is broken there are remains of green glaze for the mouthpiece. It has been smoked a little.

3722 - Complete pipe with the bowl shaped as a hand holding a beaker. It is fairly stained but does not appear to have been smoked much.

3723 - Complete pipe with an Irish harp on one side of bowl and a shamrock leaf on the other. Leaves along seams. 'NOT FOR JIVE' on each side of stem. See also no. 3182 in Vol. 34 which has the same motif along the stem. These pipes appear to originate from Liverpool. The pipe is slightly stained and appears to be unsmoked.

3724 - Bowl shaped as the head of a bearded man wearing a simple turban type head dress - perhaps an arab. On the stem is the maker's name 'CORNWELL - LONDON' of John Cornwall - listed at St. Georges in East between 1854 - 1868 and in Ratcliffe between 1880 - 1892. The pipe is well smoked.

3725 - Small or miniature bowl in shape of an owl, and with a woody stem. This replaces no. 1436 in Vol. 15 which is in poorer condition. It is unsmoked.

3726 - Lined bowl with leaves along seams and shield on each side of spur. 'H. BURSTOW - ... AVE - ST DEPTFORD' on stem. This maker is not recorded in P.A.R. 14, 1975 though a William Burstow is listed at Greenwich and Lewisham between 1805 - 1851. The pipe is well smoked and is slightly stained.

3727 - Plain pipe with forward-leaning bowl. Almost complete. 'C. CROP - LONDON' on stem. Slightly stained and moderately smoked.

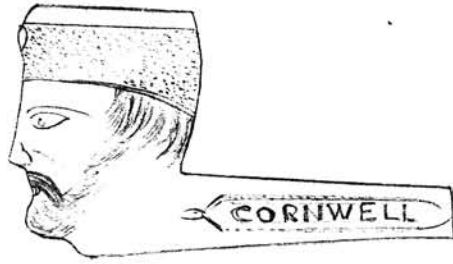
3728 - Complete claw pipe with curved stem, which again has 'C. CROP - LONDON' on it. The pipe is varnished and is unsmoked. For a different variation by Crop see no. 3367 in Vol. 34.

3729 - Complete pipe with bowl in shape of head of a soldier wearing a bush type hat - probably a Boer War General. On the stem is 'C. CROP - LONDON' with 'R.P. NO. 353104' on each side.

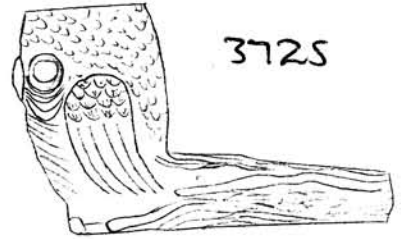
This was registered on 10th, February, 1900. It was also made with the initials 'C.I.V.' ('City Imperial Volunteers') on one side of the hat and with a vulcanite stem. The pipe is varnished and is unsmoked.

1584

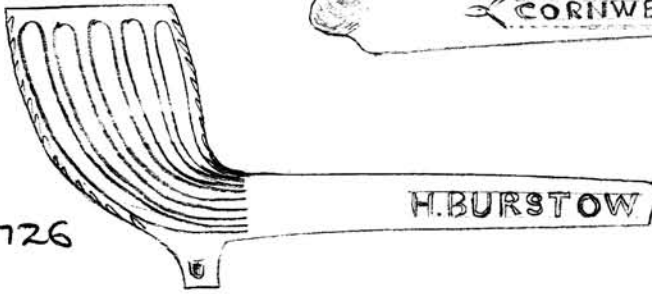
3724



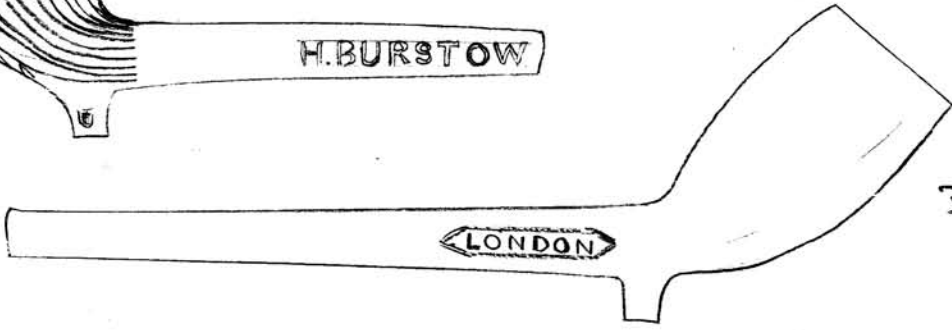
3725



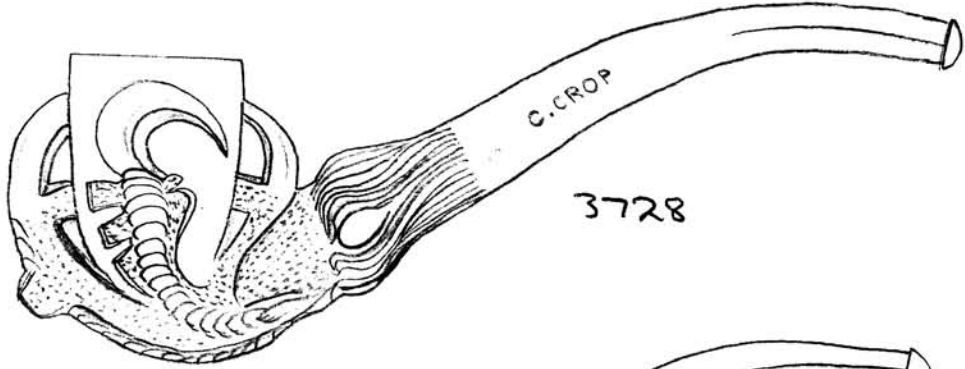
3726



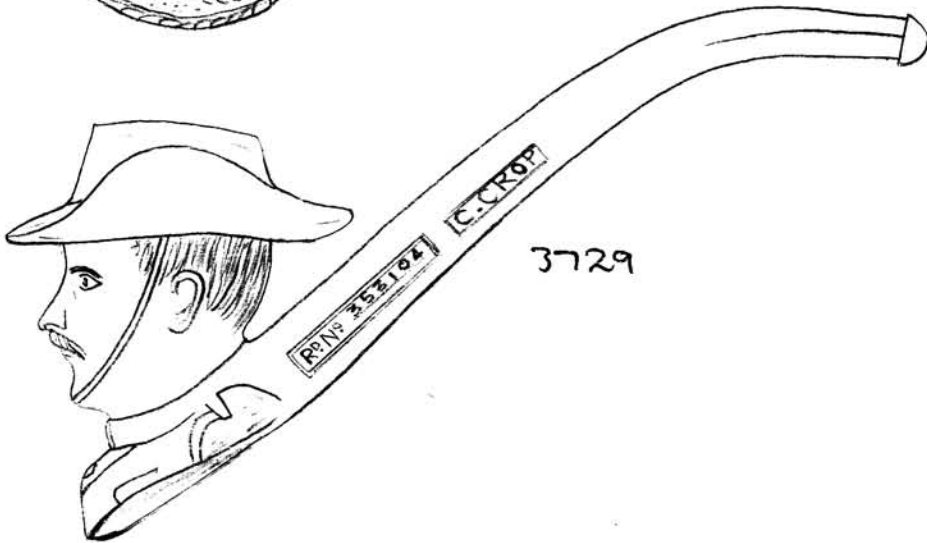
3727



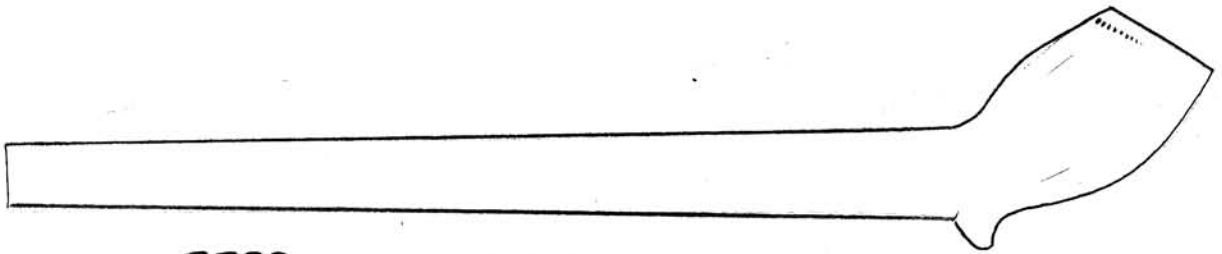
3728



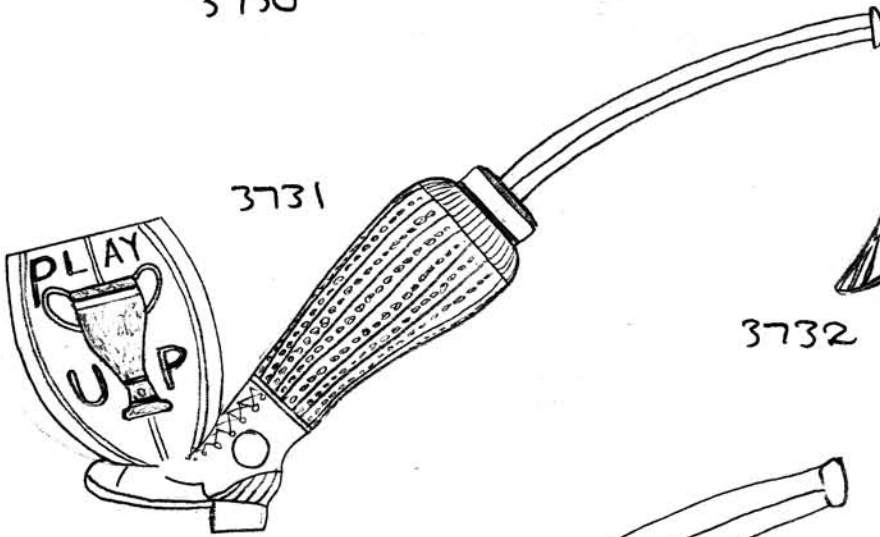
3729



1585



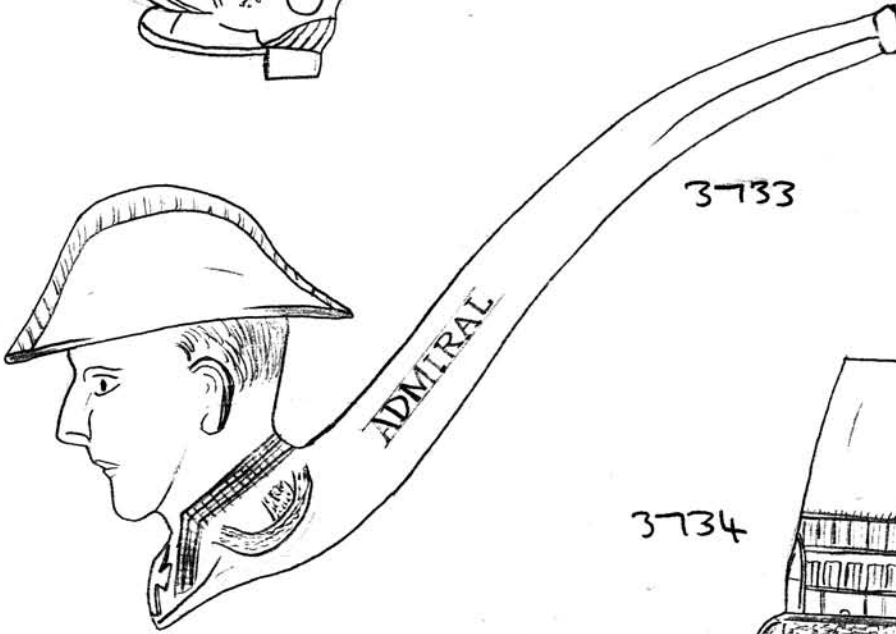
3730



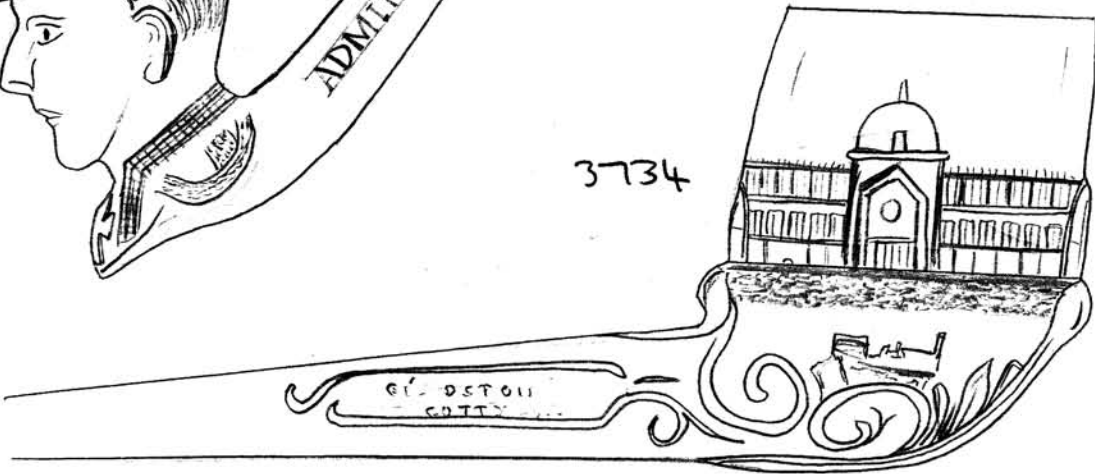
3731



3732



3733



3734

1586

3730 - Plain pipe dating c. 1700, with portion of stem still remaining - No initials present. Rim of bowl partly milled. Well smoked. Probably London-made.

3731 - Detachable bowl in the shape of a detailed leg and foot kicking a rugby ball. On each side of the bowl is a winner's cup with 'PLAY UP' in relief. The vulcanite stem is still present. This could be the pipe registered by Julius Wingerder & Co of Germany on 5th, July, 1900 (R.D. NO 359766). The pipe is unsmoked.

3732 - Bowl shaped as the head of King George V, showing his beard and moustache, and wearing a prominent naval hat. He has lapels on his shoulders and a decorative neck-piece. The pipe has been varnished and is moderately smoked. It is likely to be the pipe which appears as no. 425 V (vulcanite stem) in the catalogue of Joseph Holland & Sons of Manchester.

3733 - Complete pipe with the bowl shaped as the head of Admiral Jellicoe, and with his name on the stem. He is also wearing a naval hat. He was admiral between 1902 - 1910, and in 1910 became commander of the Atlantic Fleet (becoming commander of the Grand Fleet in August 1914). So the pipe is likely to date from this period. It is made of brown pipe clay; maker unknown. Unsmoked.

3734 - Complete cadger pipe being a crude copy of Charles Cope Exhibition pipe registered in 1862 (see no. 3416 in Vol. 35). On the stem in very poor, uneven, and hardly readable relief is 'J.E. FERON - GLASGOW - GLADSTONE CUTTY'. James E. Feron is listed between 1876 - 1882; the pipe probably being made for when Gladstone became prime minister in 1880. Well-smoked.

1587

3735 - Very elaborate detachable Gambier bowl in the shape of the head of Jupiter - illustrated in the 1894 catalogue. The beard and head dress are very detailed and even the mould line is barely visible. Parts of the bowl are coloured with enamelling. On the stem part in relief is 'GAMBIER A PARIS' and the catalogue number '866'. Beneath the bowl are the stamped initials 'J.S.'. The pipe is unsmoked.

Continued in Vol. 37.

1588

3735

