



THE NATIONAL PIPE ARCHIVE

Registered Charity Number 1043065

Accession Number: LIVNP 2012.06.227

Description: Notebook containing drawings and lists of pipes with moulded names from C19th London pipes, compiled by David Atkinson.

Comments:

Key Words: Clay pipes; London; Tingey; Balme; Butler; Dudman; Plumstead; Cope; Woolwich; Brien; Shoreditch; Bethnal Green; Fitt; Old Ford; Clark; Hammersmith; Brown; Westminster; Hall; Higgins; Pitt; Richmond; Goodall; Gosport; Fisher; Clerkenwell; Andrews; Vauxhall; Kennard; Jolly Gardens; Spaul; Bermondsey; Finch; Hilder; Battersea; Joyce; Reaney; Woods; Chase; White Horse Lane; Blake; Milo; Strand; Royal Alhambra Palace; Steele; Boorman; Whitechapel; Thorn; Lord Palmeston; Edmonds; Reynolds; Tester;

Scanned: PDF 7 December 2016

Any images in this PDF must not be lent, copied to another party, sold or reproduced in any way without prior permission from the National Pipe Archive and the copyright owner, if applicable. Reproduction or publication in any medium is expressly forbidden without written authorisation and should include an acknowledgement worded 'Courtesy of the National Pipe Archive' and quoting the relevant accession number.

London

C19th pipes with
names etc
moulded

Book II

Plus stamped marks
(continued)

LIVNP 2012.06.227

W. Tingey

Hampstead

c1870



Sans-serif lettering in relief.

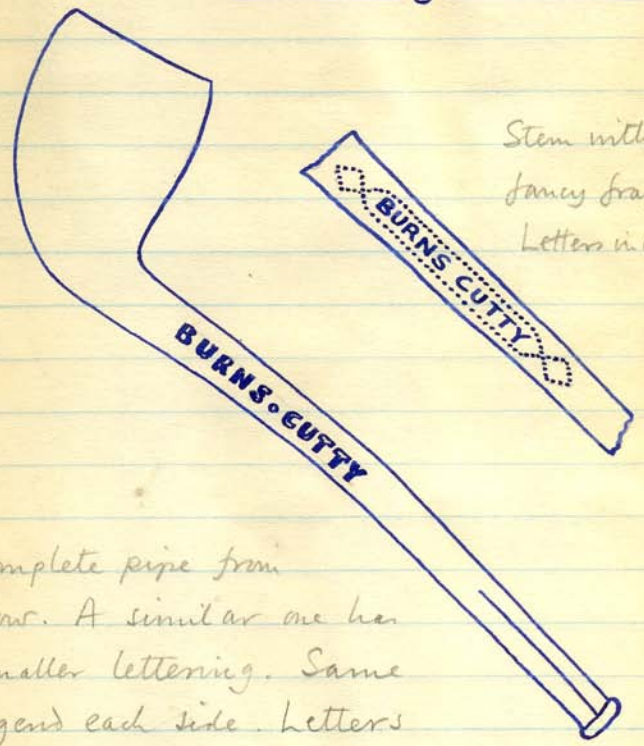
Unrecorded maker.

Box

Burns Cutty.

c1880

This is a trade term and is found with
pipes bearing maker's name.



Complete pipe from
Bour. A similar one has
smaller lettering. Same
legend each side. Letters
are in case.

c1870

3
G. Balme.

Canal Wharf, Mile End.

1867-76.



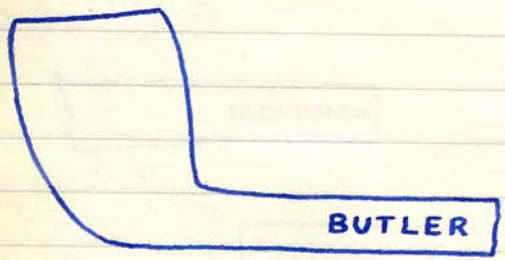
Incuse lettering. 'Mile End' on reverse.

Bow

BUTLER

Fulham

c1820



Bow

FULHAM on reverse. Inverse lettering.
 Unrecorded maker.

H. DUDMANPlumsteadc1870-80Bloomfield R^d No 71(d^d 1906)

H. DUDMAN

PLUMSTEAD

In case lettering

Unrecessed maker.

Bow.F

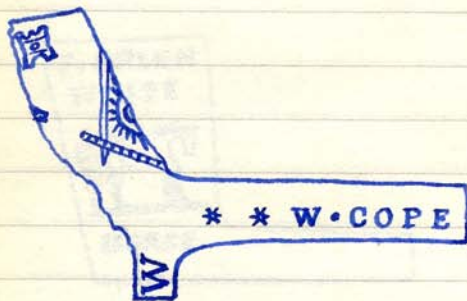
A pipe with 'matic' type bowl with rounded flat base from Woolwich Dockyard has this legend on stem.

A stem from 'Lee' has HILL BLOOMFIELD on one side & PLUMSTEAD the other c1890.

Henry Dudman (senior) retired

Henry Dudman (junior) became publican by 1901.

John Hill cont. business in Bloomfield Road.

W. COPEWoolwich1817

Greenwich

WOOLWICH a reverse. Relief letters.

'Masonic' design. There are two dies of this type.

A much later version has W. COPE / WOOLWICH incuse, framed. One design was RAOB. (examples seen from Woolwich Dockyard excavations).

c.1850+

F. BRIEN

Shoreditch

c1870-90

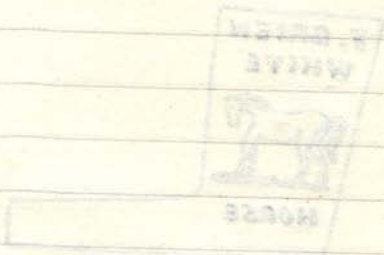


Reversham CORNER OF / BETHNAL / GREEN RD
 SHORE / DITCH with another horse.

All lettering in case.

This looks like an innkeeper rather than
 a pipemaker.

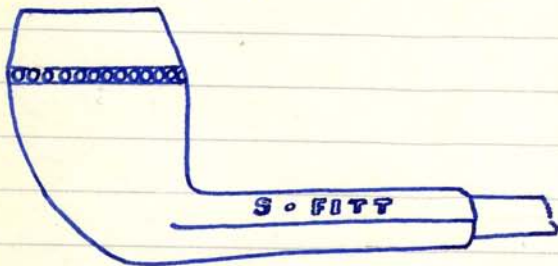
A similar square pipe commemorates
 Dick Whittington. Another has a simple
 design of a rose each side of the
 bowl. Both seen from Ivor.

S. FITTOld Ford Road, Bow1896-98

Incurve lettering, relief frame.

Bow

A pipe from Iwer with the Inniskilling design has the same inscription without the fancy border, also a 'beaded' pipe from Langley, below.



See p. 26
- p. 15



CLARK

Hammersmith

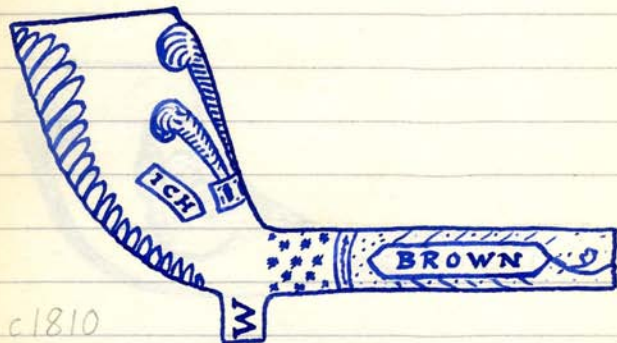
c1830-50

CLARK

ERSMITH

Relief design & lettering.
Uncoated maker.



W. BROWNWestminster1805-44

c1810

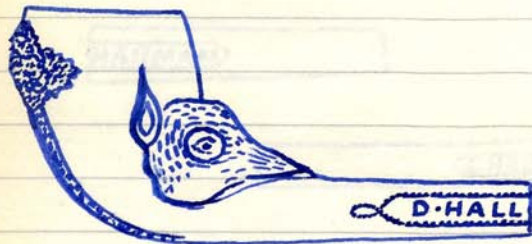
WESTMINSTER on reverse. Relief lettering.

W. BROWN

11
D. HALL

London

c1870+



Inuse letters. LONDON on reverse.

HARMAN



HARMAN

12

Charlton

c 1870-90

HARMAN

CHARL

Incuse lettering. Stem from Greenwich.



HARRIS

HIGGINS

6

Londa

c1870-90

HIGGINS LOND

BURNS CUTTY

Bar

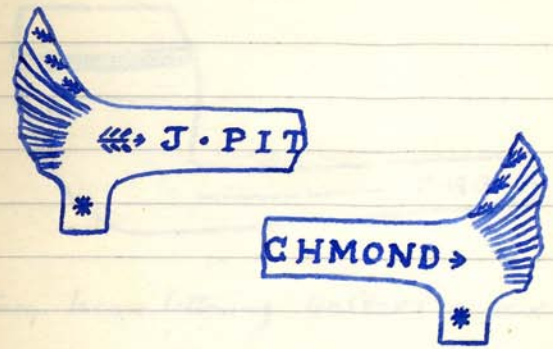
Incase letters. Thin stem.



J. PITT

Richmond

1805-11



Relief lettering.



Frederick GOODALL

Gosport Hunt

1895



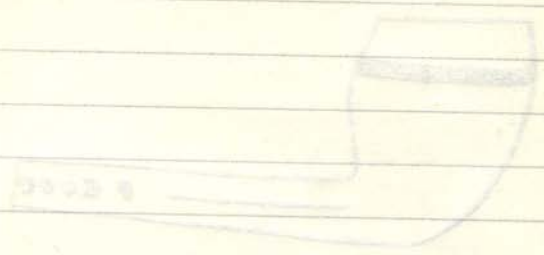
Putney. Incurve lettering. GOSPORT on reverse.

See p. 8

H. FISHER

Clerkenwell

c1890-1900

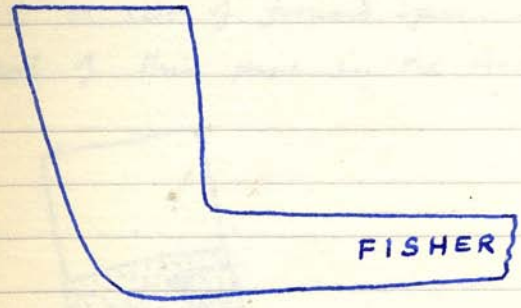


H. FISHER

CLERKENWELL

Iver

Stems also occur without the 'H'.



Iver



W. ANDREWS26 Vauxhall Walk . S.E.c1890-1900

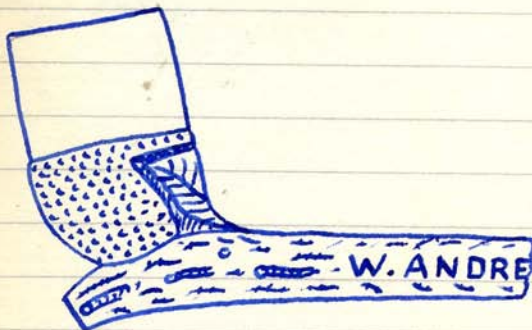
 W. ANDREWS

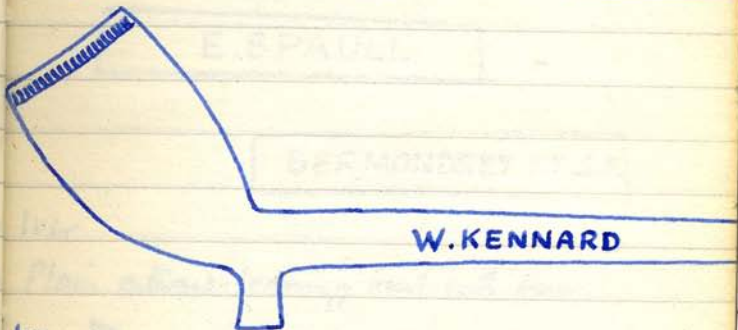

 26 VAUXHALL WALK

Ivory

Relief moulding, incuse lettering.

'S.E.' on side of forward spur. The
 bowl of this pipe is the 'Aconis' type.

Relief
incuse

W. KennardJolly Gardeners, S.W.c1890-1900

Ivor

'Jolly Gardeners S.W.' on reverse.

Probably a 'Pub' pipe

(Elizabeth) E. SPAULLVarious addressesUp to c1900+

E. SPAULL

BERMONDSEY ST S.E.

Iver.

Plain outward-leaning bowl with spur.

E. SPAULL

154 BERMONDSEY ST S.E.

Iver.

Complete address, smaller lettering.

ANGE WALK S.E.

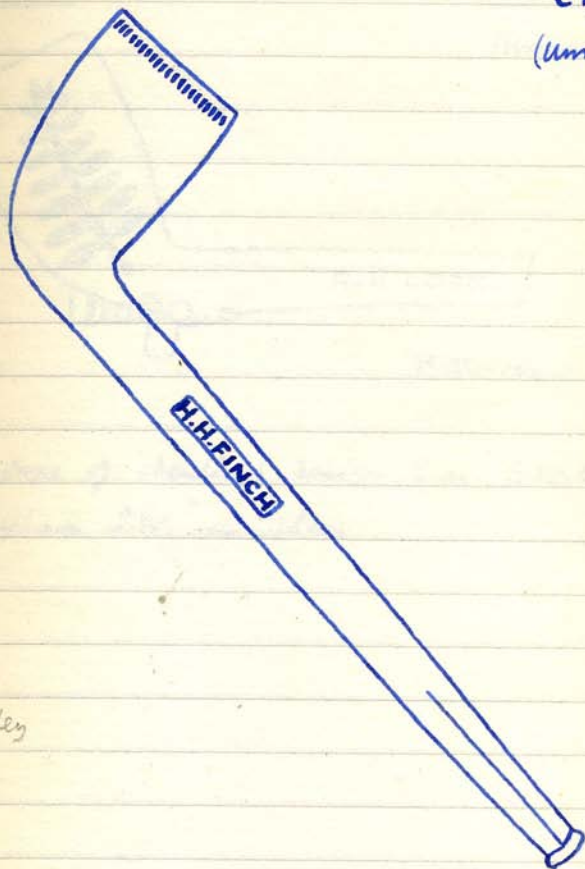
E. SPAULL on reverse.

See Book 1 p. 58

H. H. FINCH

c 1900+

(Unrecorded)

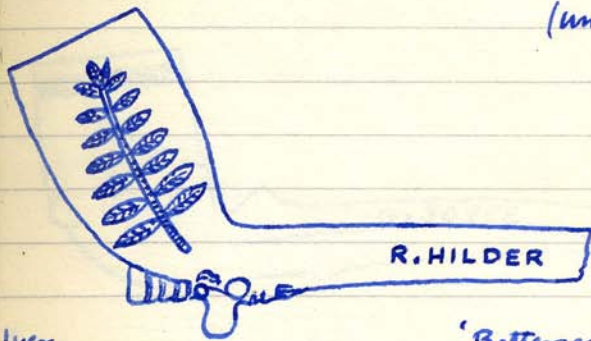
Iver
Langley

Complete pipe from Iver.
Name incuse both sides.
Probably London.

Battersea

c.1890-1910

(unrecorded)



Iver

'Battersea' on reverse

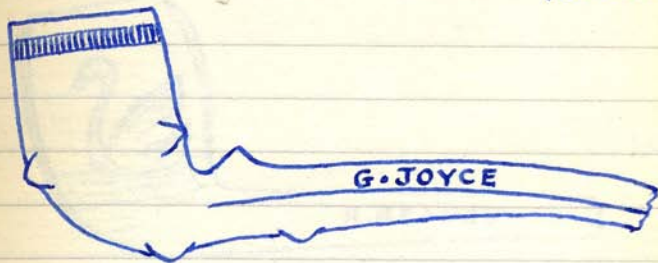
A pipe of identical design has 'Grout etc
Clapham S.W.' on stem.

G. Joyce

- Hill Row. Kinl^d Rd

c 1900

Kingsland Rd Middx (uncollected)

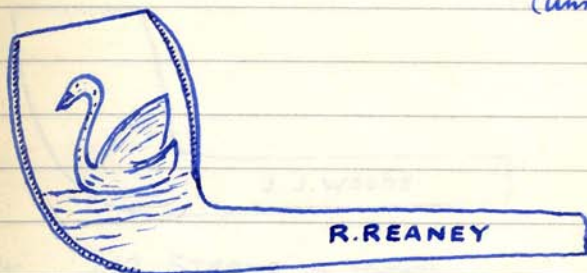


Ivor.

This pipe has been used after the mouth-piece was broken, as a result of which part of the address has been obliterated by tooth marks.

R. REANEYVauxhall Bridge Road.c1890

(Unrecorded)



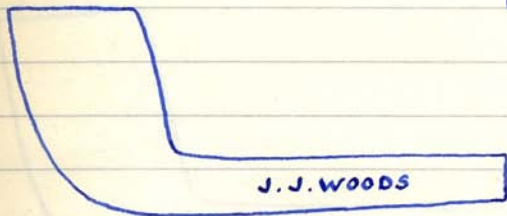
Iver

Name incuse on stem. Reverse: VAUX. B. R.?

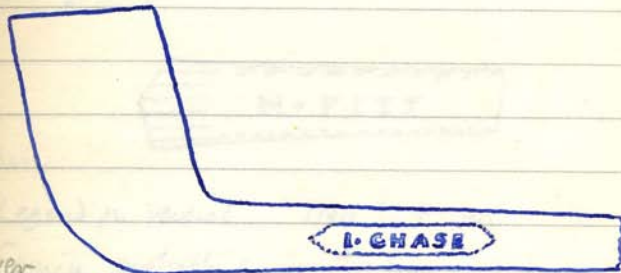
J. J. Woods212 Strand

c 1900

(unrecorded)



| ver. '212 STRAND' on reverse.

I. ChaseWhite Horse Lanec1890+

Iver

WHITE HORSE LANE in reverse. Chase legend.

Noah FITT

Charing Cross W.C.
(or Kings Cross)

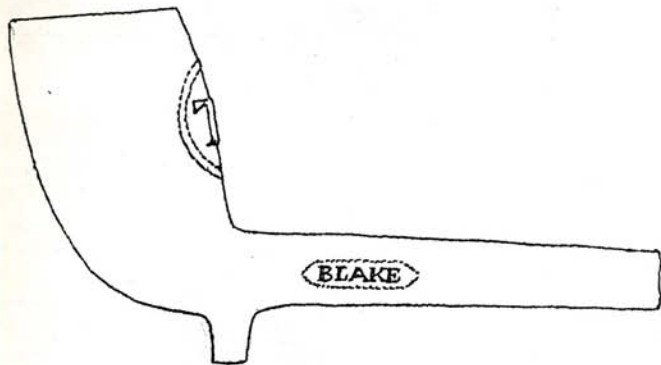
1856



Barnes

Legend on reverse ING? + WC. See p. 8

Family probably came to London from
Norwich about 1850.

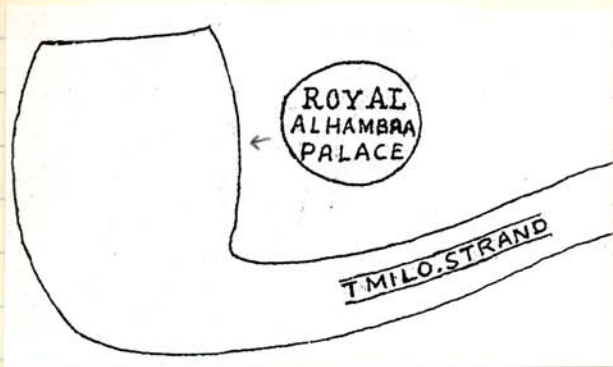
BLAKEW.T. Blake City Road 1873-98.

E. Londen 1986

TD in cartouche moulded in relief back of bowl. BLAKE/LONDON in serif letters incuse on stem. The style of this pipe is of the contemporary American market. (See also Londen C19th stamper marks p. 84.)

MILO

A tobaccoist



in Case legend
E. London 1986

Late C19th pipe advertising a music hall.
(See also p.93 C19th stamped marks)

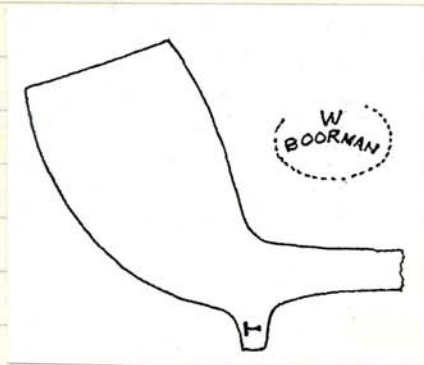
J. STEELE

Unrecorded

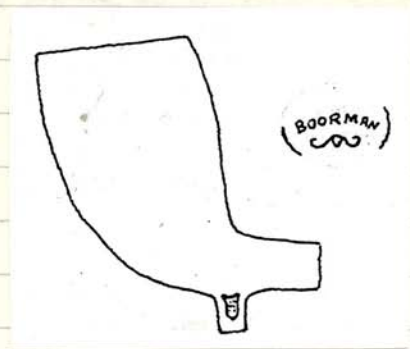
c1860-70



E. London

W. BOORMANWilliam Boorman, Whitechapel1869T/B on
spur

E. Landon

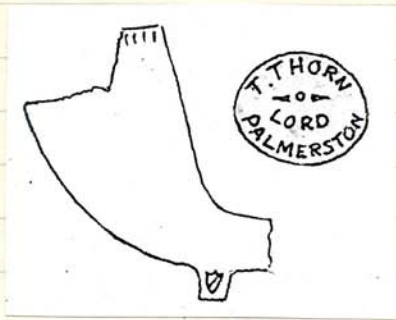


E. Landon

T. Thorn

31

c1860-70



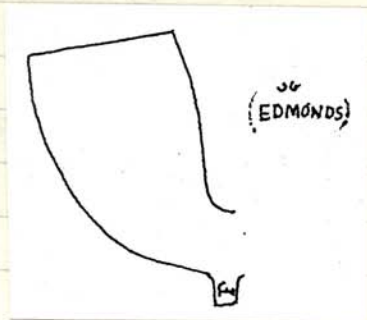
ELondon

*This is probably, an innkeeper's mark,
supplied to order by a local pipemaker.*

EDMONDS

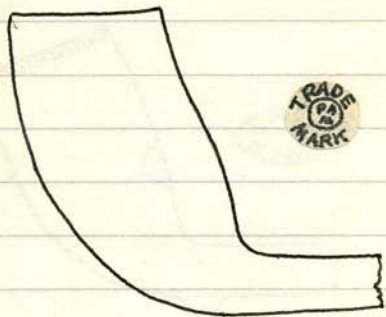
Unrecorded

c 1860-70



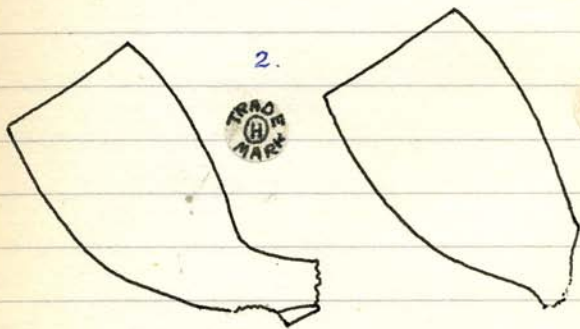
F/E on Spur

E London

Trade MarkUnknown makersc1860-70

1.

E. London

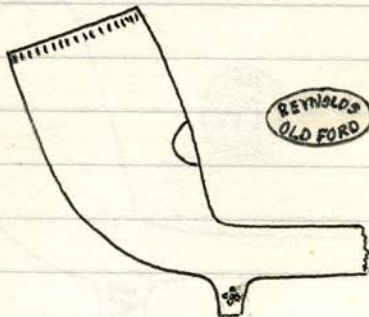
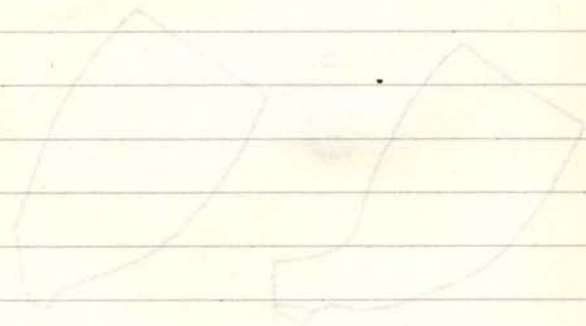
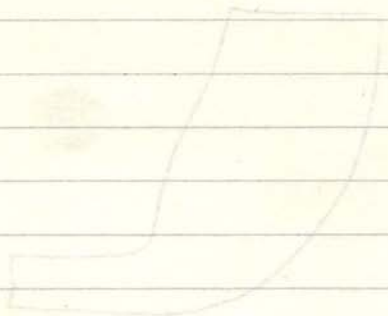


2.

3.

E. London

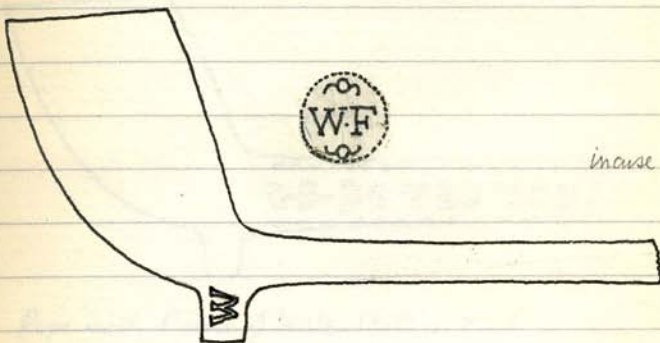
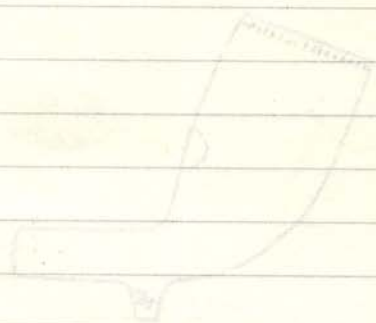
1. Appear to read PA/M. Unusual bowl shape.
2. H only.
3. H.S. 4 possible makers. See also Book 1, p. 20.

H. E. REYNOLDSOld Ford Road, Bow.1883-99

incuse

W.F

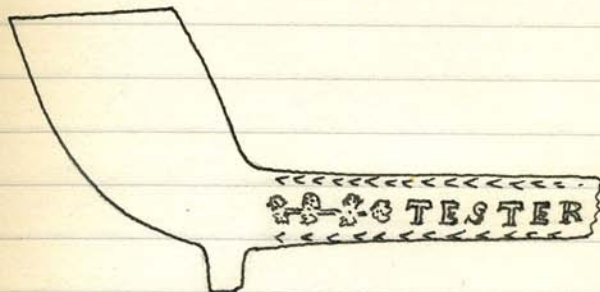
Possibly William Fuller Snowfields, Bermondsey 1817



in case

Late use of initials only mark, if this is the maker.
 See Bk I p. 41.

The Critchfield family later worked at Snowfield.

Sam TesterLittle Grays Inn Lane1828

Pipe with Prince of Wales Feathers each side of bowl with motto. Reverse of stem only has leaves and arrow.

Lydia Tester worked at the same address 1832-40 so this could be hers.